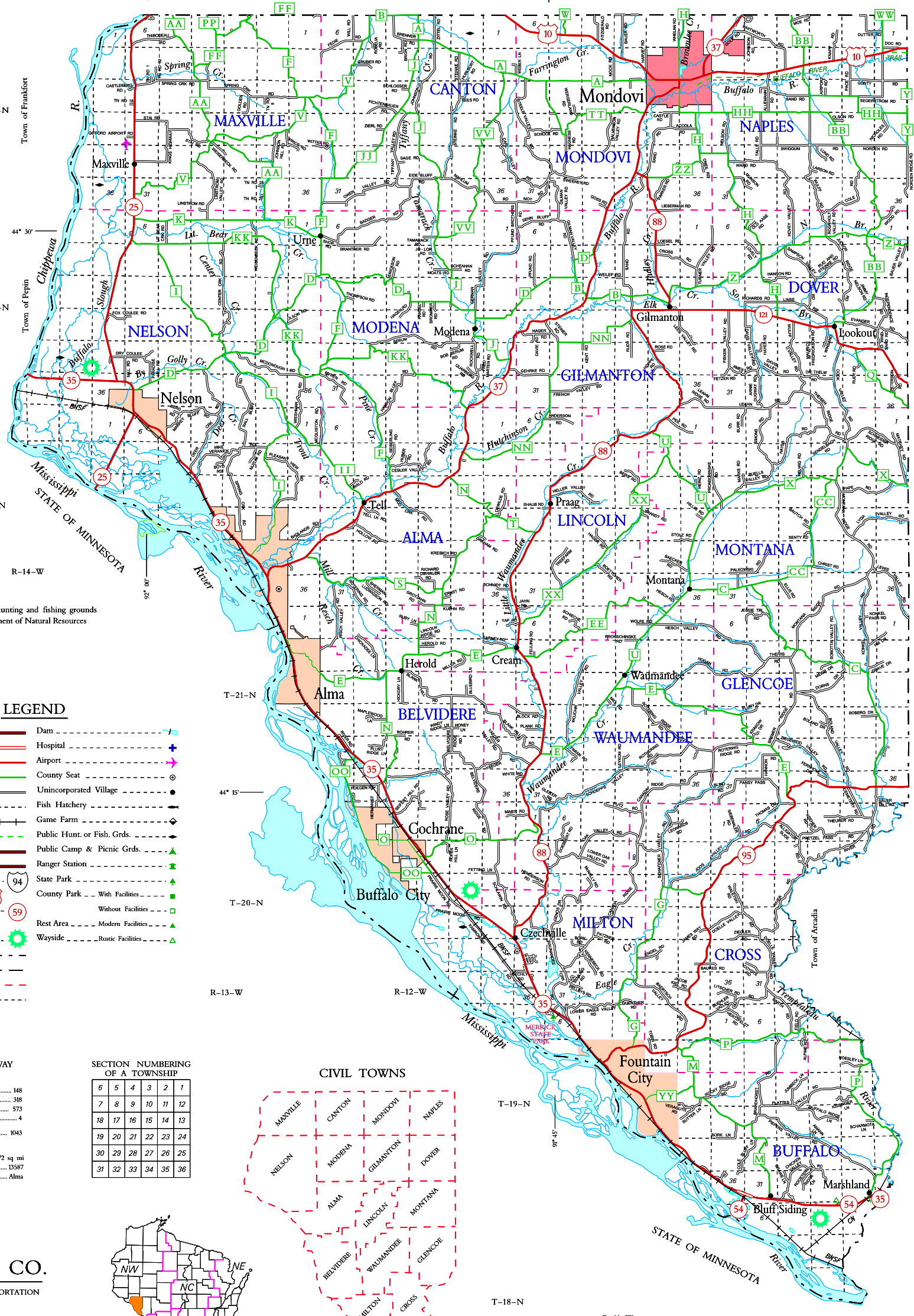


Town of Frankfort
T-24-N
Town of Pepin
T-23-N
PEPIN CO.
T-22-N
R-14-W
T-21-N
T-20-N
T-19-N
T-18-N

Town of Albion
T-24-N
Town of Chimney Rock
T-23-N
Town of Burnside
T-22-N
Town of Arcadia
T-21-N
Town of Dodge
T-19-N
T-18-N

TREMPEALEAU CO.
TREMPEALEAU CO.
TREMPEALEAU CO.



For boundaries of public hunting and fishing grounds please contact the Department of Natural Resources

LEGEND

- Freeway
- Multilane Divided
- U.S. or State Hwy
- County Trunk Hwy
- Town Road
- Firelane
- Railroad
- State Trail
- Interchange
- Highway Separation
- Interstate Highway No.
- U.S. Highway No.
- State Highway No.
- County Highway Letter
- Great River Road
- State Boundary
- County Boundary
- Civil Town Boundary
- Section Line
- Dam
- Hospital
- Airport
- County Seat
- Unincorporated Village
- Fish Hatchery
- Game Farm
- Public Hunt. or Fish. Grds.
- Public Camp & Picnic Grds.
- Ranger Station
- State Park
- County Park With Facilities
- Without Facilities
- Rest Area Modern Facilities
- Wayside Rustic Facilities

MILES OF HIGHWAY as of Dec. 31, 2019

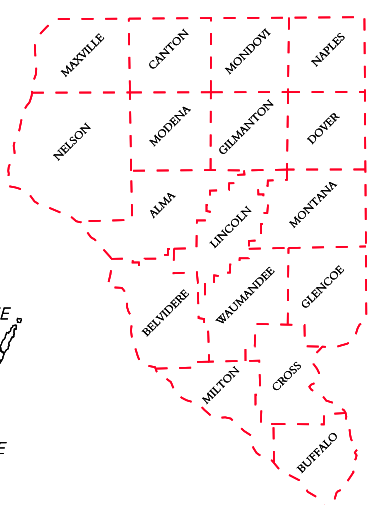
STATE	148
COUNTY	318
LOCAL ROADS	573
OTHER ROADS	4
TOTAL FOR COUNTY	1043

Land Area (2010 Census) 672 sq mi
 Population (2010 Census) 13587
 County Seat Alma

SECTION NUMBERING OF A TOWNSHIP

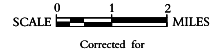
6	5	4	3	2	1
7	8	9	10	11	12
13	14	15	16	17	18
19	20	21	22	23	24
25	26	27	28	29	30
31	32	33	34	35	36

CIVIL TOWNS



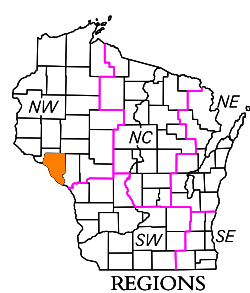
BUFFALO CO.

DEPARTMENT OF TRANSPORTATION
Madison, Wisconsin



Corrected for JAN. 2021

Base compiled from U.S.G.S. Quadrangles 1:100,000 Series



REGIONS