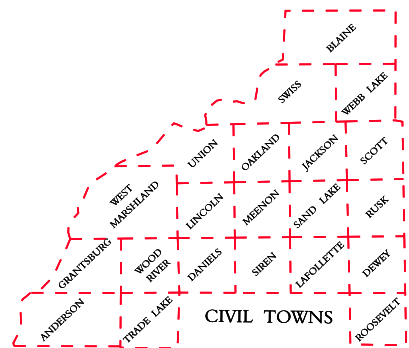
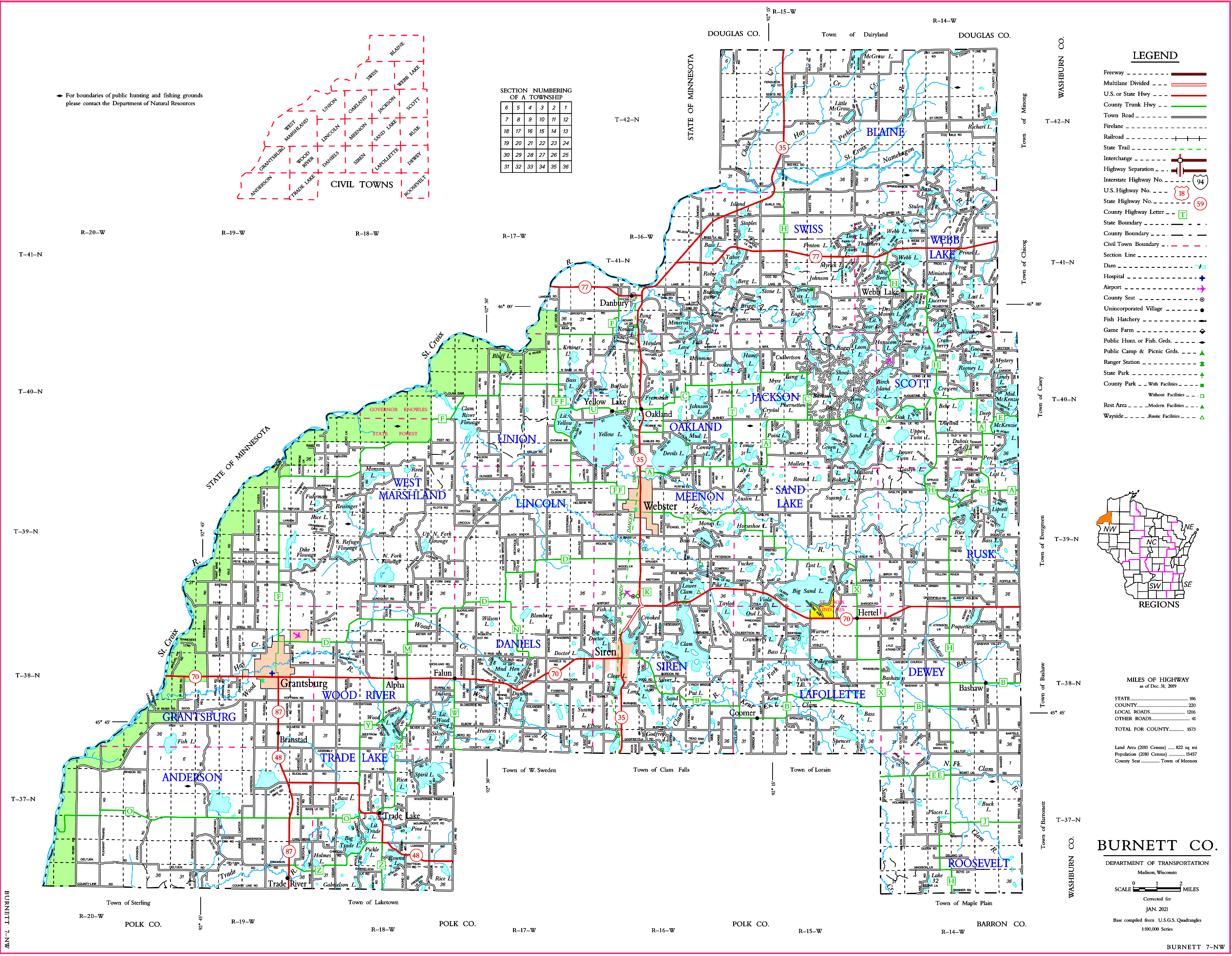


→ For boundaries of public hunting and fishing grounds please contact the Department of Natural Resources

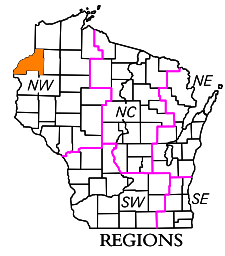


SECTION NUMBERING OF A TOWNSHIP

|    |    |    |    |    |    |
|----|----|----|----|----|----|
| 6  | 5  | 4  | 3  | 2  | 1  |
| 7  | 8  | 9  | 10 | 11 | 12 |
| 18 | 17 | 16 | 15 | 14 | 13 |
| 19 | 20 | 21 | 22 | 23 | 24 |
| 30 | 29 | 28 | 27 | 26 | 25 |
| 31 | 32 | 33 | 34 | 35 | 36 |



- LEGEND**
- Freeway
  - Multilane Divided
  - U.S. or State Hwy
  - County Trunk Hwy
  - Town Road
  - Firelane
  - Railroad
  - State Trail
  - Interchange
  - Highway Separation
  - Interstate Highway No. 94
  - U.S. Highway No. 18
  - State Highway No. 59
  - County Highway Letter T
  - State Boundary
  - County Boundary
  - Civil Town Boundary
  - Section Line
  - Dam
  - Hospital
  - Airport
  - County Seat
  - Unincorporated Village
  - Fish Hatchery
  - Game Farm
  - Public Hunt. or Fish. Grds.
  - Public Camp & Picnic Grds.
  - Ranger Station
  - State Park
  - County Park - With Facilities
  - County Park - Without Facilities
  - Rest Area - Modern Facilities
  - Rest Area - Rustic Facilities
  - Wayside



MILES OF HIGHWAY as of Dec. 31, 2019

|                  |      |
|------------------|------|
| STATE            | 106  |
| COUNTY           | 220  |
| LOCAL ROADS      | 1206 |
| OTHER ROADS      | 41   |
| TOTAL FOR COUNTY | 1573 |

Land Area (2010 Census) ..... 822 sq mi  
 Population (2010 Census) ..... 15457  
 County Seat ..... Town of Meenon

**BURNETT CO.**  
 DEPARTMENT OF TRANSPORTATION  
 Madison, Wisconsin

SCALE 0 1 2 MILES

Corrected for  
 JAN. 2021

Base compiled from U.S.G.S. Quadrangles  
 1:100,000 Series

BURNETT 7-NW