



Table of Contents

5.7 Magnetic Particle.....	2
5.7.1 Introduction.....	2
5.7.2 Applications.....	4
5.7.3 Limitations.....	6



MAGNETIC PARTICLE

5.7.1 Introduction

The magnetic particle test (MT) is used for testing ferromagnetic materials (steel, wrought iron, cast iron, etc.). MT is used to confirm suspected cracks or test suspect-details. The primary advantage of MT is the high sensitivity in the detection of tight surface cracks and other small discontinuities. Typical detectable discontinuities include cracks, lack of fusion, and other weld related surface discontinuities. Base metal discontinuities such as seams, laps, and “stringers” are also easily detected.

As defined by American National Standards Institute (ANSI), the magnetic particle method utilizes the principle that magnetic lines of force, when present in a ferromagnetic material, will be distorted by a change in material continuity, such as a sharp dimensional change or a discontinuity. If the discontinuity is open to, or close to, the surface of a magnetized material, flux lines will be distorted at the surface; a condition termed flux leakage. When fine magnetic particles are distributed over the area of the discontinuity where the flux leakage exists, the filings will converge at the discontinuity and the accumulation of particles will be visible for the inspector.

The objective of magnetic particle testing is to cause a magnetic field of sufficient strength and predetermined direction to leak if discontinuities are present. The inspector detects these leaks by sprinkling the test area with iron filings, blowing away the excess, and then looking for areas where the filings have accumulated. These areas of accumulation indicate a surface or possibly a subsurface discontinuity.

MT methods and implementation procedures are fully described by the following terms:

1. **Dry method:** The dry method describes the type of indicating medium, the iron filing powder, as dry. Commercial powders are available in various colors including red, black, grey, or yellow. The color selection should be based on the maximum color contrast with the material to be tested. Refer to Figure 5.7.1-1 for a view of the test powder colors. Dry fluorescent particles are also available for use with a black light. Dry particles are finely divided ferromagnetic material with high permeability and low retentivity. The powder consists of a mixture of particle sizes, smaller ones being attracted by weak leakage fields, and larger ones for detecting larger discontinuities.



Figure 5.7.1-1: Sample Powder Colors.

2. **Wet Method:** If powders or particles are suspended in oil or water, the method is considered wet. Wet suspensions are also available in various colors and fluorescent. They can be sprayed onto the part, or the part can be bathed in a suspension. Wet fluorescent particles provide maximum sensitivity (superior visibility) if used with the proper current, lighting, and surface preparation. Wet particles are mixed with the suspension in predetermined concentrations and particle sizes. The concentration will affect the test sensitivity. Light concentrations will produce faint indications and heavy concentrations may provide too much coverage. They are generally smaller in size and lower in permeability than dry particles.
3. **Continuous Procedure:** This term is used if magnetizing force is applied prior to the application of the particles and terminated only after excess powder has been blown away.
4. **Residual Procedure:** This term residual is used where the particles are applied after the part has been magnetized, and the magnetizing current terminated.

Field-testing of bridges and related structures use portable units, which include the small portable prod or yoke units with alternating current (AC), half-wave direct current (HWDC) capability. Portable prod equipment is commonly available in amperages up to 1,500. However, it can also be powered from 115-volt single-phase AC. **The inspector should note that direct current (DC) prods may cause arc strikes and therefore, they should never be used on nonredundant steel tension members (NSTMs).**

Yokes are lightweight portable units easily carried to the job site. On some yokes the legs are fixed at a set distance. On others the legs are adjustable for various pole spacing. Yokes operate with 115 volt AC. Refer to Figure 5.7.1-2 for a view of a portable field kit.



Figure 5.7.2-1: MT on a Built-Up Plate Bridge Girder Butt-Weld.



Figure 5.7.2-2: MT on a Sign Structure Base.

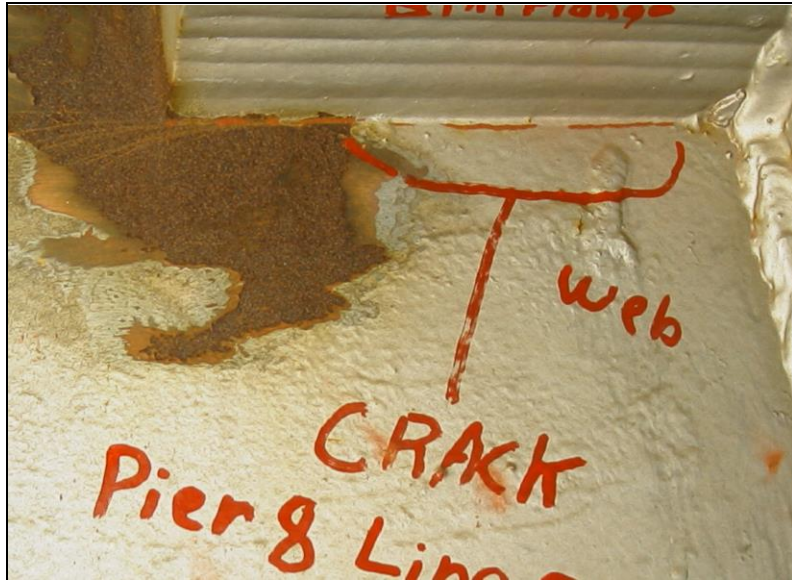


Figure 5.7.2-3: Crack Identified by MT.

5.7.3 Limitations

MT does have some limitations. This test will work only on ferromagnetic material and the magnetic field must be in a direction perpendicular to the principal plane of the discontinuity for best detection. MT will not disclose fine porosity. The deeper the discontinuity lies below the test surface, the larger the discontinuity must be to provide a readable indication.

Electricity is required on-site, and must be AC for FCMs. And as previously mentioned, DC prods should not be used on FCMs. Test surfaces should be clean and paint removed for highest sensitivity. Also, residual magnetism may need to be removed. Although the method appears simple, the need for experienced and knowledgeable operators is required.