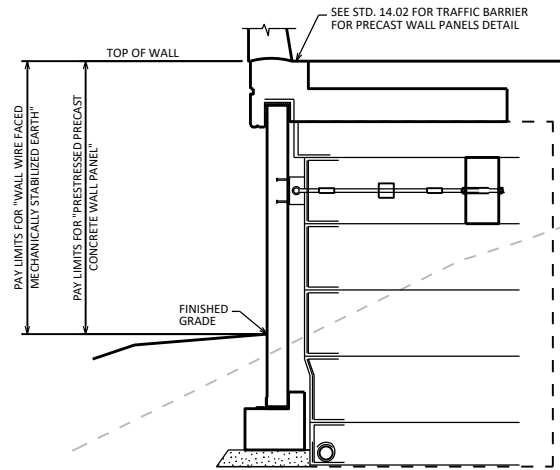


TYPICAL WALL SECTION WITH CAST-IN-PLACE CONCRETE COPING



TYPICAL WALL SECTION WITH CAST-IN-PLACE CONCRETE TRAFFIC BARRIER
SEE TYPICAL WALL SECTION WITH CAST-IN-PLACE CONCRETE COPING DETAIL FOR ADDITIONAL INFORMATION

MATERIAL PROPERTIES

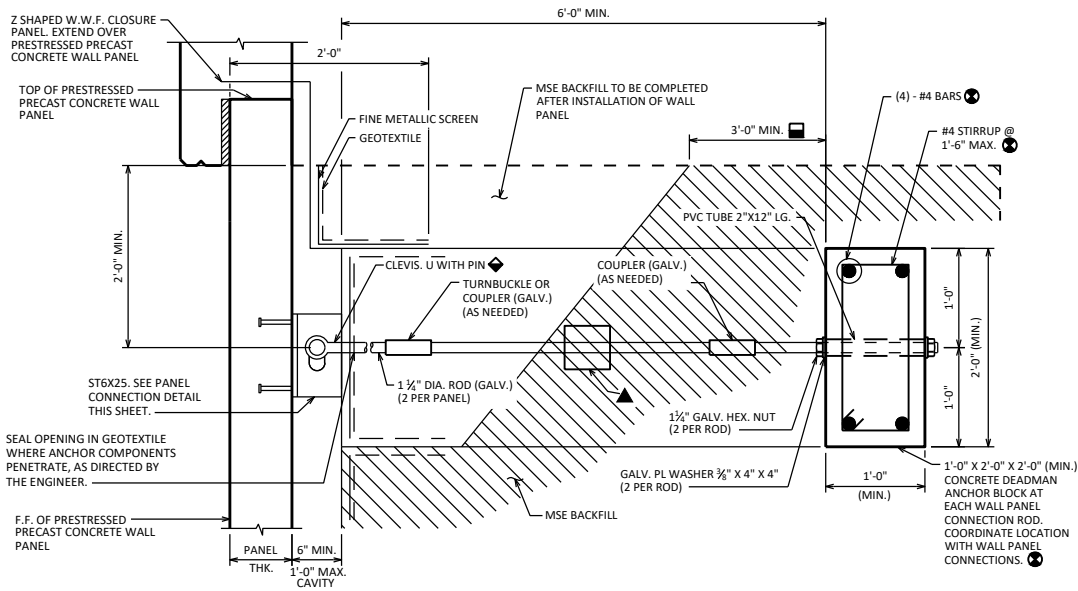
| | |
|---|--------------------|
| CONCRETE MASONRY RETAINING WALLS | $f'_c = 3,500$ PSI |
| PRESTRESSED PRECAST CONCRETE WALL PANEL | $f'_c = 5,000$ PSI |
| BAR STEEL REINFORCEMENT GRADE 60 | $f_y = 60,000$ PSI |
| STRUCTURAL CARBON STEEL - ASTM A36 | $f_y = 36,000$ PSI |

NOTES

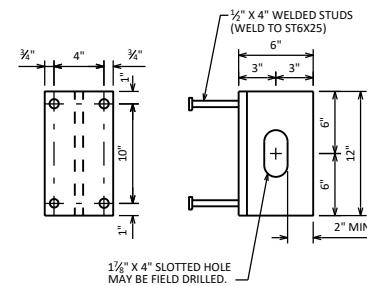
- △ CLEVIS, CLEVIS PIN, COUPLER, MULTIDIRECTIONAL CONNECTOR, AND TURNBUCKLE TO BE CORROSION RESISTANT AND DEVELOP 125% OF THE ULTIMATE STRENGTH OF THE 1/2" DIAMETER ROD.
- ST6X25, ROD, CONNECTING HARDWARE, AND DEADMAN ANCHOR INCLUDING ALL ASSOCIATED REINFORCEMENT ARE INCLUDED IN THE BID ITEM "PRESTRESSED PRECAST CONCRETE WALL PANEL".
- FORCES APPLIED TO THE DEADMAN ANCHOR MUST BE ACCOUNTED FOR IN THE DESIGN OF MSE REINFORCEMENT WHEN SATISFYING FORCE AND MOMENT EQUILIBRIUM.

DESIGNER NOTES

- SHOW BAR SIZE AND SPACING ONLY. DO NOT PROVIDE BILL OF BARS. BAR STEEL REINFORCEMENT AND CONCRETE INCLUDED IN BID ITEM "PRESTRESSED PRECAST CONCRETE WALL PANEL".
 - △ WALL PANEL HEIGHT IS DEFINED AS THE LENGTH FROM THE TOP OF THE WALL PANEL TO THE TOP OF THE CONCRETE FOOTING. THE MAXIMUM ALLOWABLE WALL PANEL HEIGHT IS 30'.
- LEGEND**
- CONTRACTOR TO DESIGN LENGTH TO PROVIDE REQUIRED HORIZONTAL CAPACITY OF ANCHOR ASSEMBLY. MINIMUM 3'-0" OF COMPACTED FILL IN FRONT OF DEADMAN ANCHOR PRIOR TO WALL PANEL ERECTION. 1 1/2" ROD TO BE 2'-0" MIN. BELOW TOP OF REINFORCED SOIL ZONE.
 - ◆ CLEVIS TO BE INSTALLED TOWARDS THE TOP OF THE SLOTTED HOLE, TO ALLOW FOR SETTLEMENT OF THE WIRE FACED MSE WALL.
 - ▲ OPTIONAL MULTIDIRECTIONAL CONNECTOR MAY BE USED TO FACILITATE ALIGNMENT AT THE CONNECTION.
 - INCLUDES CONCRETE FOR COPING, FOOTING, AND DEADMAN ANCHOR.



WALL PANEL ANCHOR DETAIL
CAST-IN-PLACE CONCRETE COPING SHOWN
CAST-IN-PLACE CONCRETE TRAFFIC BARRIER SIMILAR



PANEL CONNECTION DETAIL

AS AN ALTERNATIVE 3/8" (GALV.) ADHESIVE ANCHORS MAY BE USED TO AVOID AN OBSTRUCTION. ALTERNATIVE SHALL BE LIMITED TO ONE PANEL CONNECTION PER PANEL.

ST6X25 MAY BE WELDED TO 3/8" THICK PLATE WITH (4)-1/2" X 4" STUDS ANCHORED IN PRECAST CONCRETE PANEL. RESTORE ZINC COATING AROUND ANY WELDED AREAS. SUBMIT DETAILS FOR APPROVAL BY THE ENGINEER.

| | |
|----------------------------------|-----------------------------|
| MSE WALL WIRE FACING 1 | |
| | BUREAU OF STRUCTURES |
| APPROVED: <i>Laura Shadewald</i> | DATE: 1-19 |