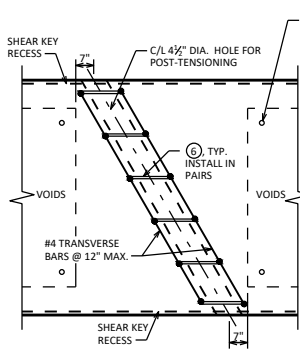
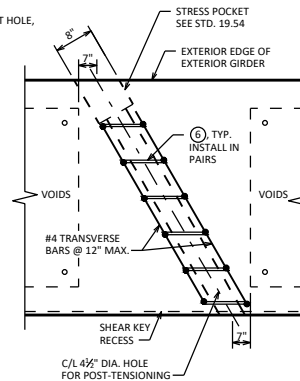


**PART GIRDER PLAN WITH SKEW**

① ② & #4 TRANSVERSE BARS NOT SHOWN FOR CLARITY



**INTERIOR GIRDER DUCT PLAN**



**EXTERIOR GIRDER DUCT PLAN**

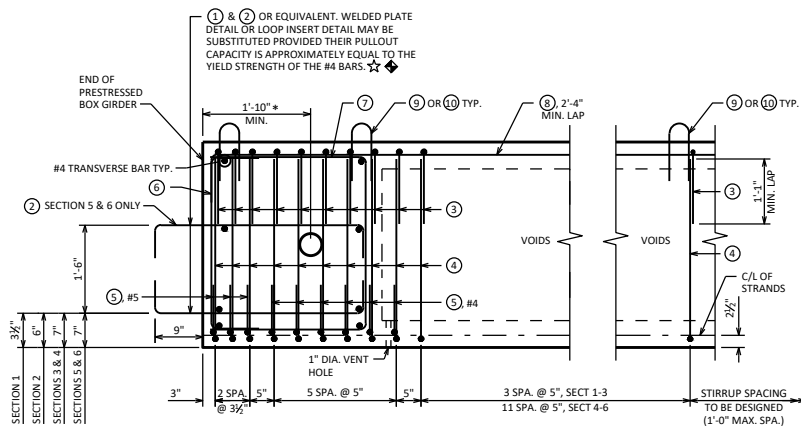
**LEGEND**

- ☆ BARS NOT REQUIRED WHEN USED ON GRS ABUTMENTS.
- ◆ BARS PLACED PARALLEL TO GIRDERS. SPACING IS PERPENDICULAR TO THE C/L OF THE GIRDERS.
- \* WHEN WINGS ARE PARALLEL TO ABUTMENT C/L, USE DIMENSIONS TO ALLOW FOR EASE OF POST-TENSIONING OPERATION.
- \*\* PLACE AT 5" MAX. SPACING UNTIL PERPENDICULAR TO THE C/L OF THE GIRDER.
- \*\*\* PLACE ALONG SKEW FROM END OF PRESTRESSED BOX GIRDER UNTIL ALL END BLOCK BOTTOM STIRRUP BARS, ③, ⑤, ARE PLACED.

**DESIGNER NOTES**

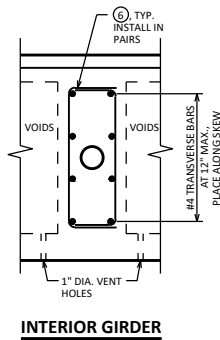
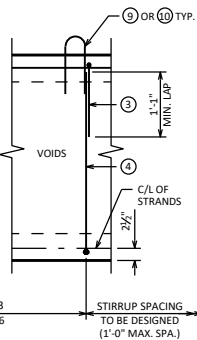
FOR BAR BEND DETAILS, SEE STANDARD 19.50 AND STANDARD 19.51

FOR SKEWED STRUCTURES CAST END OF PRESTRESSED BOX GIRDER ALONG SKEW.

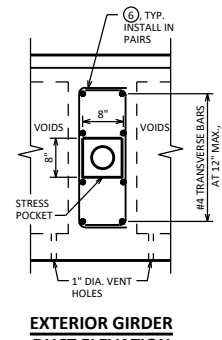


**PART GIRDER ELEVATION SHOWING 0° SKEW**

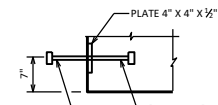
PLACE #4 TRANSVERSE BARS AS SHOWN ALONG SKEW



**INTERIOR GIRDER DUCT ELEVATION**

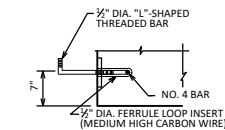


**EXTERIOR GIRDER DUCT ELEVATION**



**WELDED PLATE DETAIL**

(EQUIVALENT TO ONE #4 BAR)



**LOOP INSERT DETAIL**

**PRESTRESSED BOX GIRDER DETAILS 1**



APPROVED: *Laura Shadewald*

DATE:  
1-17