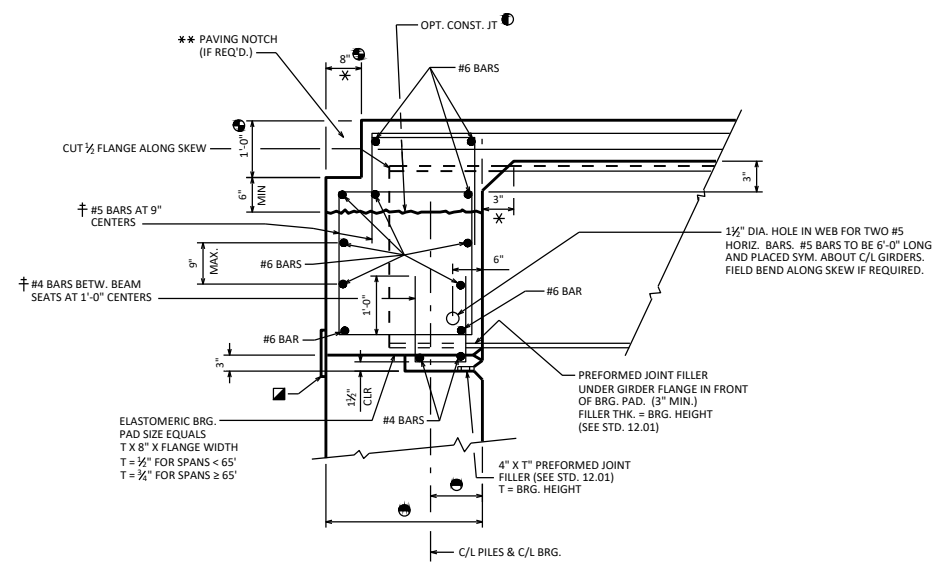
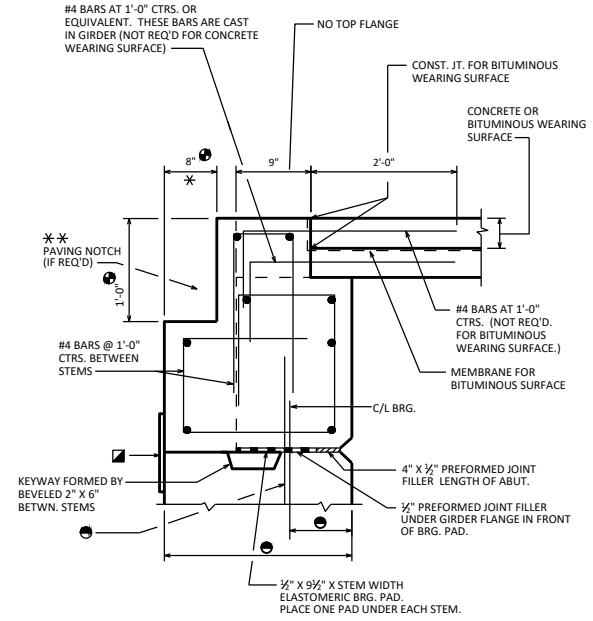


**STEEL GIRDER WITH
FIXED SEAT**



**STEEL GIRDER WITH
SEMI-EXPANSION SEAT**



**PRECAST DOUBLE TEE OR
MULTI-STEM SECTION**

NOTES

- FOR SKEWED STRUCTURES CAST END OF PRECAST TEE ALONG SKEW.
- * DIMENSION IS TAKEN NORMAL TO C/L SUBSTRUCTURE UNITS.
- ▣ 1'-6" RUBBERIZED MEMBRANE WATERPROOFING
- † BARS PLACED PARALLEL TO GIRDERS. SPACING PERPENDICULAR TO C/L GIRDERS.
- DESIGNER NOTES**
- SEE STANDARD 19.55 FOR PRESTRESSED BOX GIRDER BEARING DETAILS.
- ① THE USE OF THIS OPT. CONST. JOINT IS NOT RECOMMENDED FOR SKEWS OVER 15° WHEN LARGE DEADLOAD END ROTATION IS ANTICIPATED.
- ** USE PAVING NOTCH ON ALL U.S.H. BRIDGES, S.T.H. BRIDGES, I.H. BRIDGES & ON C.T.H. BRIDGES WITH CONCRETE APPROACHES.
- ⊙ PAVING NOTCH IS 1'-0" WIDE BY 1'-4" DEEP IF STRUCTURAL APPROACH SLAB (STD. 12.10) IS USED.
- SEE STD. 12.01

BRG. DETAILS FOR STEEL GDRS. AND PRECAST UNITS ON A1 ABUTMENTS	
BUREAU OF STRUCTURES	
APPROVED: <i>Laura Shadewald</i>	DATE: 7-18