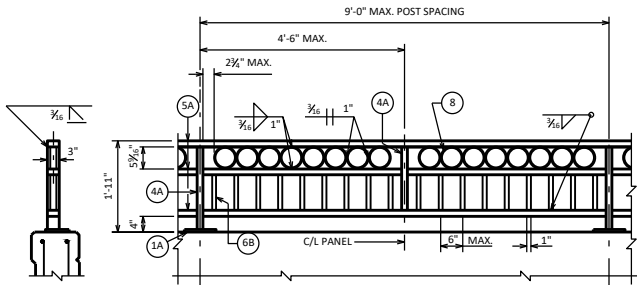
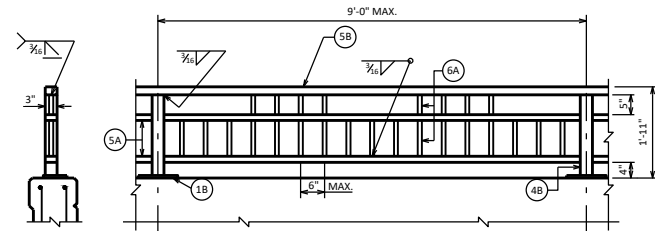


DETAIL A

SEAL ENDS ON CURVED STRUCTURAL TUBING WITH 3/8" PLATE WELD AND GRIND SMOOTH.

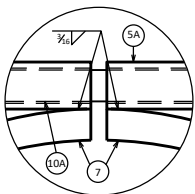


TYPE C1

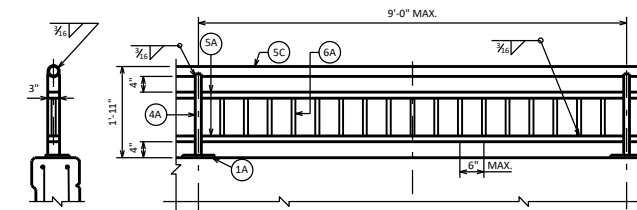


TYPE C4

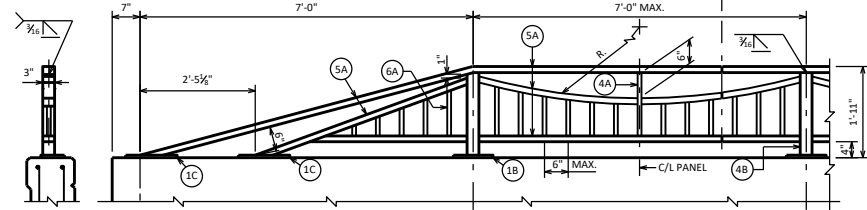
FIELD ERECTION JT. LOCATION. SEE "DETAIL A" FOR CURVED MEMBER END CLOSURE. SEE STD. 30.18 FOR STRAIGHT MEMBER FIELD SPLICE DETAIL.



DETAIL B

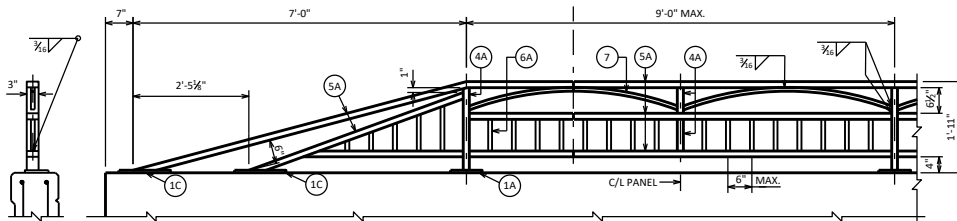


TYPE C2

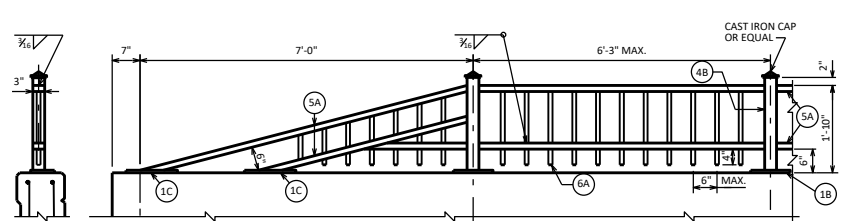


TYPE C5

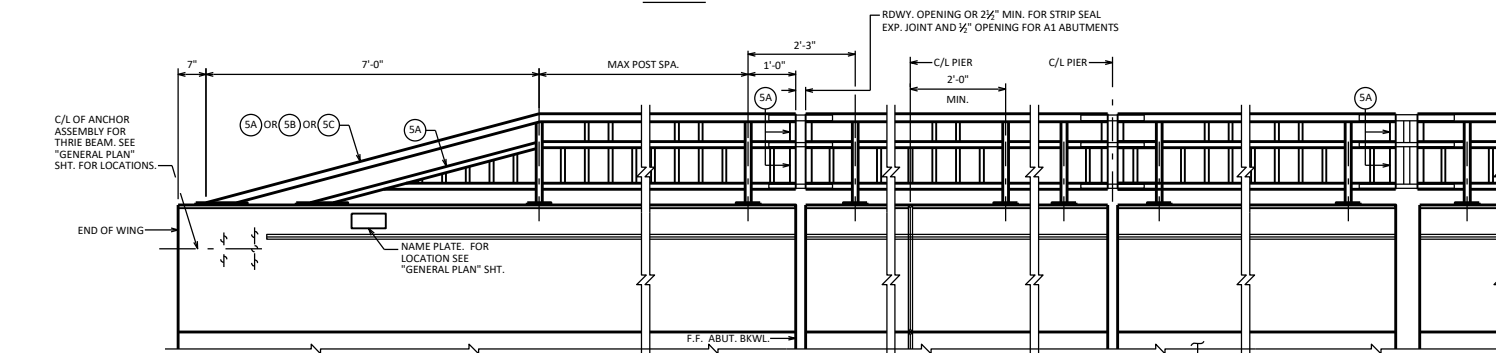
FIELD ERECTION JT. LOCATION. SEE "DETAIL B" FOR CURVED MEMBER END JT. DETAIL. SEE STD. 30.18 FOR STRAIGHT MEMBER FIELD SPLICE DETAIL.



TYPE C3



TYPE C6



C/L OF ANCHOR ASSEMBLY FOR THREE BEAM. SEE "GENERAL PLAN" SHT. FOR LOCATIONS.

NAME PLATE. FOR LOCATION SEE "GENERAL PLAN" SHT.

RDWY. OPENING OR 2 1/2" MIN. FOR STRIP SEAL EXP. JOINT AND 1/2" OPENING FOR A1 ABUTMENTS

USE THIS END TRANSITION FOR ALL RAILING TYPES UNLESS SHOWN OTHERWISE

STRIP SEAL EXP. JT. @ ABUT. FOR TYPE A1 ABUT., USE 1/2" FILLER TO TOP OF PARAPET. SEE STD. 12.01/12.02

DEFLECTION JT. @ PIER

STRIP SEAL EXP. JT. @ PIER

MODULAR EXP. JT.

INSIDE ELEVATION

OPTIONAL CONSTRUCTION JOINTS IN THE PARAPETS MAY BE USED. RUN BAR REINF. THRU THE JOINT. LAP LONGIT. BARS A MIN. OF 1'-3". MIN. JOINT SPACING OF 8'-0". DEFINE CONSTR. JT. WITH A 1/4" V-GROOVE.

RAILING WEIGHT = 22 LB/FT

DESIGNER NOTES

COMBINATION RAILINGS TYPE C1-C6 MAY ALSO BE USED AS A PEDESTRIAN RAIL MOUNTED DIRECTLY TO A BRIDGE SIDEWALK OR RETAINING WALL BY INCREASING THE RAILING HEIGHT TO A MINIMUM OF 3'-6" AND A MAXIMUM OF 4'-6" AND USING A MINIMUM POST SIZE OF 3" X 3" X 1/2". WHEN USED ON A BRIDGE, A TRAFFIC BARRIER IS REQUIRED BETWEEN THE ROADWAY AND THE SIDEWALK. FOR THIS PEDESTRIAN RAILING, BID ITEM SHALL BE "RAILING STEEL PEDESTRIAN TYPE C1-C6". THE CLEAR SPACE BETWEEN THE TOP TWO RAILS MAY BE INCREASED TO A 6" MAXIMUM EXCEPT FOR "TYPE C1" RAILING.

A MINIMUM 12'-0" WING LENGTH IS RECOMMENDED TO ACCOMMODATE THE RAIL END TRANSITION AND PROVIDE A POST SPACING ON THE WING THAT WILL MAINTAIN THE RAIL AESTHETICS.

SEE STANDARD 30.18 FOR ADDITIONAL RAILING DETAILS.

SEE STANDARD 30.07 FOR:

- DEFLECTION JOINT DETAILS AND NOTES
- BEAM GUARD ANCHOR ASSEMBLY DETAILS
- PARAPET REINFORCING BAR SIZE AND SPACING

COMBINATION RAILING TYPES 'C1 - C6'



APPROVED: *Laura Shadewald*

DATE: 7-19