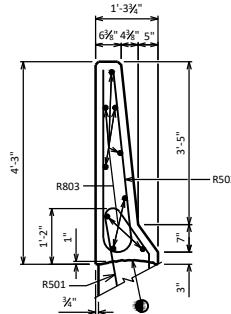


INSIDE ELEVATION

◆ ROADWAY OPENING OR 2½" MIN. FOR EXPANSION JOINT. USE ½" OPENING WITH FILLER FOR A1 ABUTMENTS

■ BENCHMARK (WHEN SUPPLIED), AVOID PLACING BELOW A RAIL OR FENCE SYSTEM THAT IS ATTACHED TO THE TOP OF THE PARAPET.

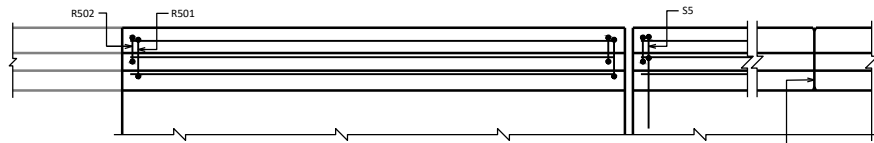


SECTION A

BILL OF BARS

FOR ABUTMENT PARAPETS

BAR MARK	CON.	ABUT.	ABUT.	LENGTH	BENT	LOCATION
R501	X			4'-6"	X	PARAPET VERT.
R502	X			7'-11"	X	PARAPET VERT.
R803	X					PARAPET HORIZ.
S5	X			4'-2"	X	PARAPET VERT.
S5	X			7'-11"	X	PARAPET VERT.
S8	X					PARAPET HORIZ.

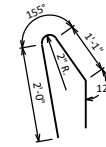


PLAN

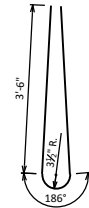
EXPANSION JOINT @ ABUT. 0° SKEW SHOWN. MATCH EXP. JT. OPENING.

FOR TYPE A1 ABUT., USE ½" FILLER TO TOP OF PARAPET. SEE STD. 12.01.

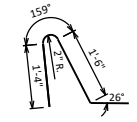
OPTIONAL CONSTRUCTION JOINTS IN THE PARAPETS MAY BE USED. RUN BAR REINF. THRU THE JOINT. LAP LONGIT. BARS A MIN. OF 3'-5" MIN. JOINT SPACING OF 80'-0". DEFINE CONST. JOINT WITH A ½" - "V" GROOVE.



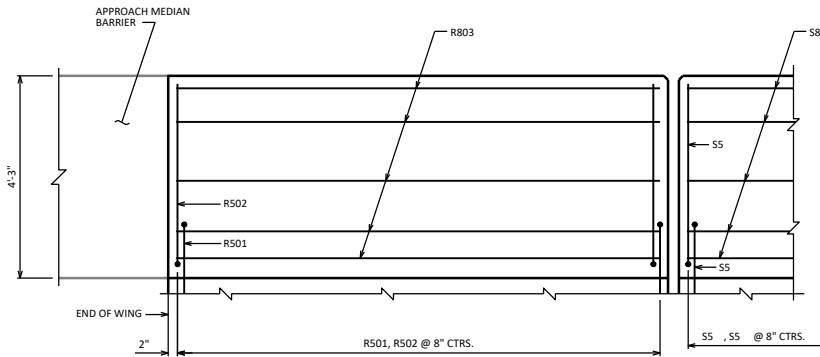
R501



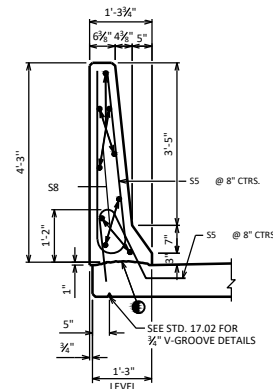
R502/S5



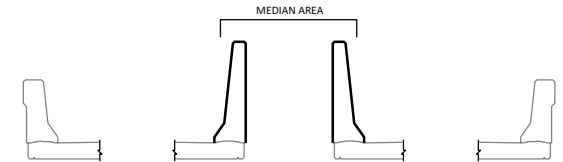
S5



OUTSIDE ELEVATION



SECTION THRU PARAPET ON BRIDGE



SLOPED FACE PARAPET "51F" MAY BE USED IN MEDIAN AREA OF ADJACENT STRUCTURES WHEN HIGHWAY MEDIAN APPROACH CONCRETE BARRIER IS 51" HIGH

◆ CONST. JOINT - STRIKE OFF AS SHOWN.

A R501 BAR MAY BE USED IN LIEU OF A TYPICAL S5 BAR ADJACENT TO THE PAVING NOTCH ON TYPE A1 ABUTMENTS. AREA = 3.41 FT.² WEIGHT = 512 LBS./FT.

SLOPED FACE PARAPET '51F'



APPROVED: *Laura Shadewald*

DATE: 7-19