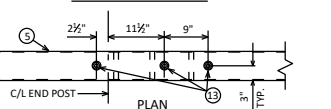
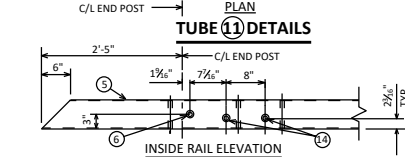
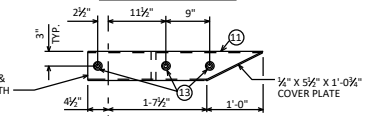
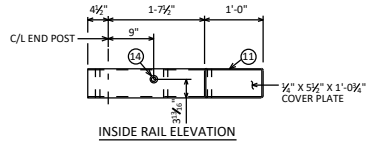
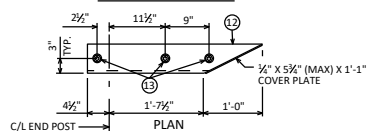
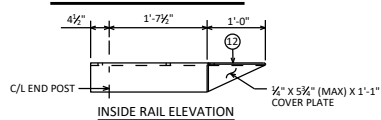


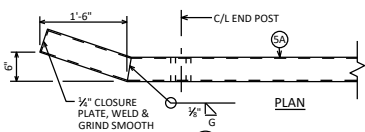
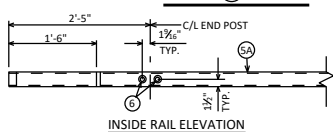
TOP RAIL (5) DETAILS



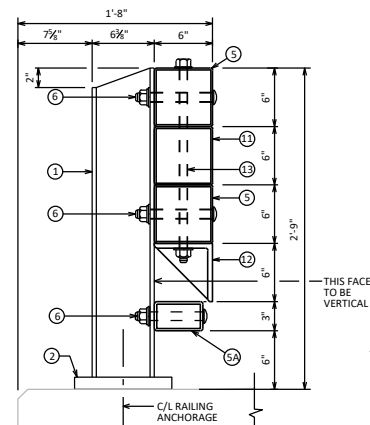
BOTTOM RAIL (5) DETAILS



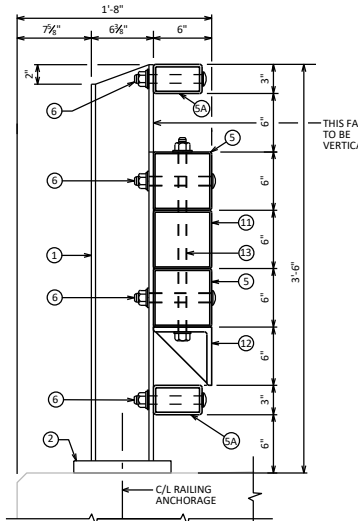
ANGLE (12) DETAILS



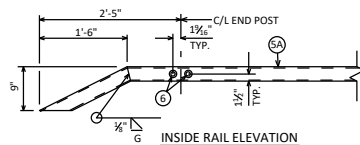
BOTTOM RAIL (5A) DETAILS



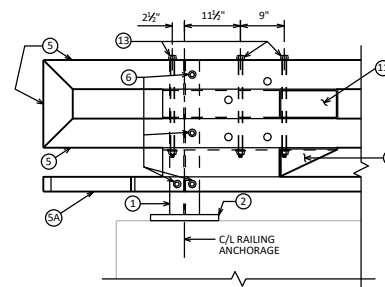
SECTION THRU NY3 RAILING END POST



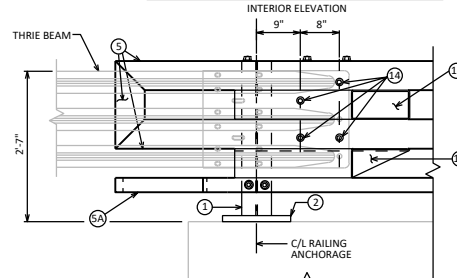
SECTION THRU NY4 RAILING END POST



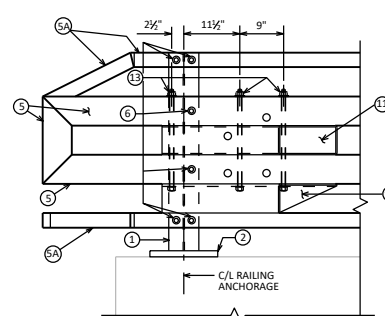
TOP RAIL (5A) DETAILS



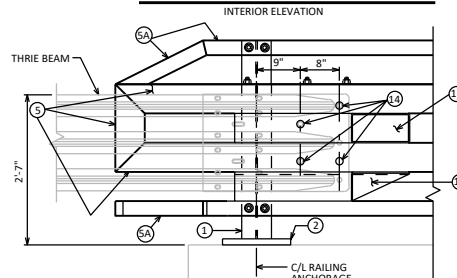
ELEVATION DETAIL AT NY3 END POST



ELEVATION OF DETAIL AT NY3 END POST



ELEVATION DETAIL AT NY4 END POST



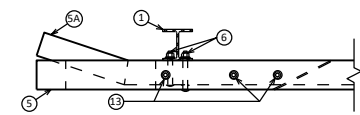
ELEVATION OF DETAIL AT NY4 END POST

LEGEND

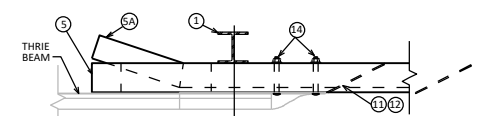
- ① W6 X 25 WITH 1 1/2" X 1 1/2" HORIZONTAL SLOTTED HOLES ON SIDE OF POST FOR BOLT NO. 6 AT NO. 5 (AND TOP RAIL FOR NY4). USE 1" DIA. HOLE FOR BOLT NO. 6 AT N. 5A BOTTOM RAIL. CUT BOTTOM OF POST TO MATCH CROSS SLOPE OF ROADWAY. PLACE POSTS VERTICAL. PLACE POSTS NORMAL TO GRADE LINE.
- ② PLATE 1 1/2" X 10" X 1'-2". SEE STANDARDS 30.26 AND 30.27 FOR MORE INFORMATION.
- ③ TS 6 X 6 X 3/8" STRUCTURAL TUBING. USE 3/4" DIA. HOLES IN TOP AND BOTTOM OF RAILS FOR BOLT NO. 13 AS SHOWN IN PLAN DETAILS. USE 1" DIA. HOLES IN FRONT AND BACK OF RAILS FOR BOLTS NO. 6 & NO. 14 AS SHOWN IN ELEVATION DETAILS.
- ④ SA TS 5 X 3 X 3/4" STRUCTURAL TUBING. USE 1" DIA. HOLES FOR BOLT NO. 6 IN TOP RAIL FOR NY4 (FRONT & BACK). USE 1 1/2" X 1 1/2" HORIZONTAL SLOTTED HOLES FOR BOLT NO. 6 IN BOTTOM RAIL (FRONT & BACK) AND A 2" O.D. WASHER UNDER BOLT HEAD.
- ⑤ 3/4" DIA. A325 SLOTTED ROUND HEAD BOLT WITH HEX NUT, 3/4" X 1 1/2" X 1 1/2" WASHER, AND SPRING LOCK WASHER (1 REQUIRED AT RAIL NO. 5 TO POST NO. 1 CONNECTION LOCATIONS SHOWN. 2 REQUIRED AT RAIL NO. 5A TO POST NO. 1 CONNECTION LOCATIONS SHOWN).
- ⑥ TS 6 X 6 X 3/8" STRUCTURAL TUBING. USE 1" DIA. HOLES IN FRONT AND BACK FOR BOLT NO. 14 & 3/4" DIA. HOLES IN TOP & BOTTOM FOR BOLT NO. 13.
- ⑦ L 6 X 6 X 1/2" STRUCTURAL ANGLE. USE 3/4" DIA. HOLES IN TOP FLANGE FOR BOLT NO. 13.
- ⑧ 3/4" DIA. A325 FULLY THREADED BOLTS, 2 WASHERS AND A HEAVY HEX NUT, ON EACH BOLT. NUT TO BE FINGER TIGHT. 3 BOLTS AT EACH END POST.
- ⑨ 3/4" DIA. A325 SLOTTED ROUND HEAD BOLT WITH HEX NUT AND 3/8" X 2" X 2" WASHER FOR CONNECTION OF THIRIE BEAM (4 REQUIRED)

NOTES

STRUCTURAL TUBING SHALL CONFORM TO THE REQUIREMENTS OF ASTM A500 GRADE B OR C WITH A CERTIFIED fy = 50 KSI. STRUCTURAL ANGLE SHALL CONFORM TO THE REQUIREMENTS OF ASTM A709 GRADE 50.



PLAN OF DETAIL AT NY3 END POST



PLAN OF DETAIL AT NY4 END POST

END POST DETAILS FOR TUBULAR STEEL RAILING TYPE NY3 & NY4



APPROVED: *Laura Shadewald* DATE: 7-22