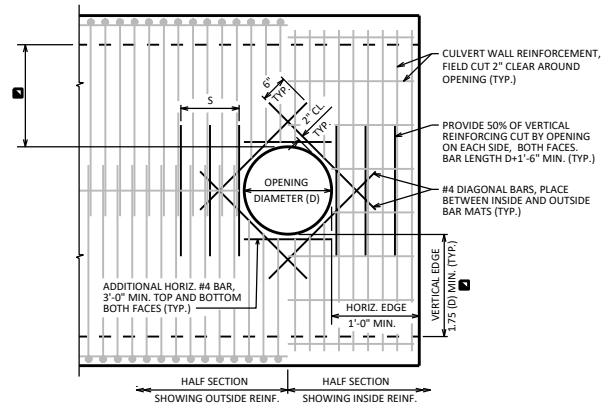


NOTES

ALL BAR STEEL REINFORCEMENT SHALL BE CUT 2" CLEAR AROUND OPENING.

DESIGNER NOTES

DETAILS SHOWN ARE FOR CAST-IN-PLACE CULVERTS. PRECAST CULVERT DETAILS TO BE SIMILAR.



ELEVATION

WHEN $D \leq 1'-6"$ $S = 1'-6"$
 WHEN $D > 1'-6"$ $S = 1'-6"$ MIN, D MAX

**PIPE OPENING IN
CULVERT WALL**



**BUREAU OF
STRUCTURES**

APPROVED: *Laura Shadewald*

DATE:
1-13