

GENERAL NOTES:

MATERIALS AND WORKMANSHIP SHALL BE IN ACCORDANCE WITH WISCONSIN DEPARTMENT OF TRANSPORTATION STANDARD SPECIFICATIONS, AND THE CONTRACT SPECIAL PROVISIONS.

DESIGN SPECIFICATION: DESIGN STRUCTURE BY CURRENT EDITION AASHTO LRFD BRIDGE DESIGN SPECIFICATIONS AND AS SUPPLEMENTED BY WISDOT BRIDGE MANUAL.

USE GRADE A CONCRETE IN FOOTING AND WINGWALLS. $f'_c = 4$ KSI (MIN.)

PROVIDE CONCRETE COVER ON REINFORCING BARS AS NOTED HEREIN.

CHAMFER EXPOSED CONCRETE EDGES $\frac{1}{4}" \times \frac{1}{4}"$ EXCEPT AS NOTED.

PROVIDE DEFORMED REINFORCEMENT STEEL MEETING THE REQUIREMENTS OF ASTM DESIGNATION 615, OR 617, GRADE 60 AS SET FORTH IN THE STANDARD SPECIFICATIONS.

IF A CAST-IN-PLACE OPTION IS SHOWN AND SPECIFICATIONS ALLOW FOR A PRECAST SUBSTITUTION, PRECAST STRUCTURE SYSTEM (INCLUDING WINGWALLS AND HEADWALLS) AND FOOTERS WILL BE DESIGNED BY CONTRACTORS.

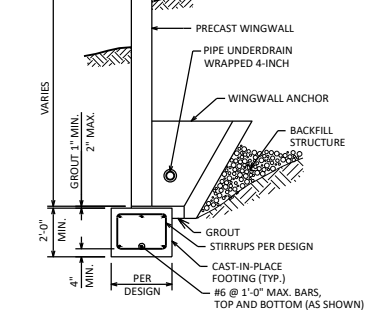
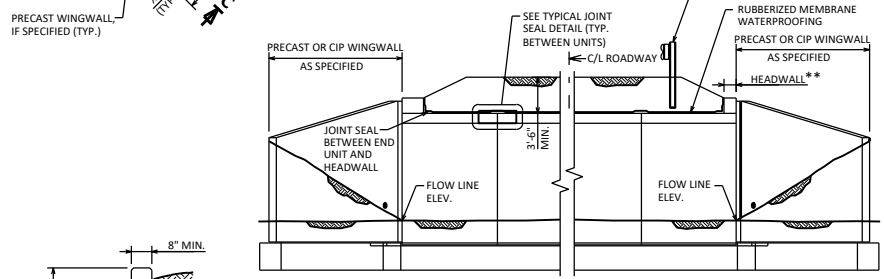
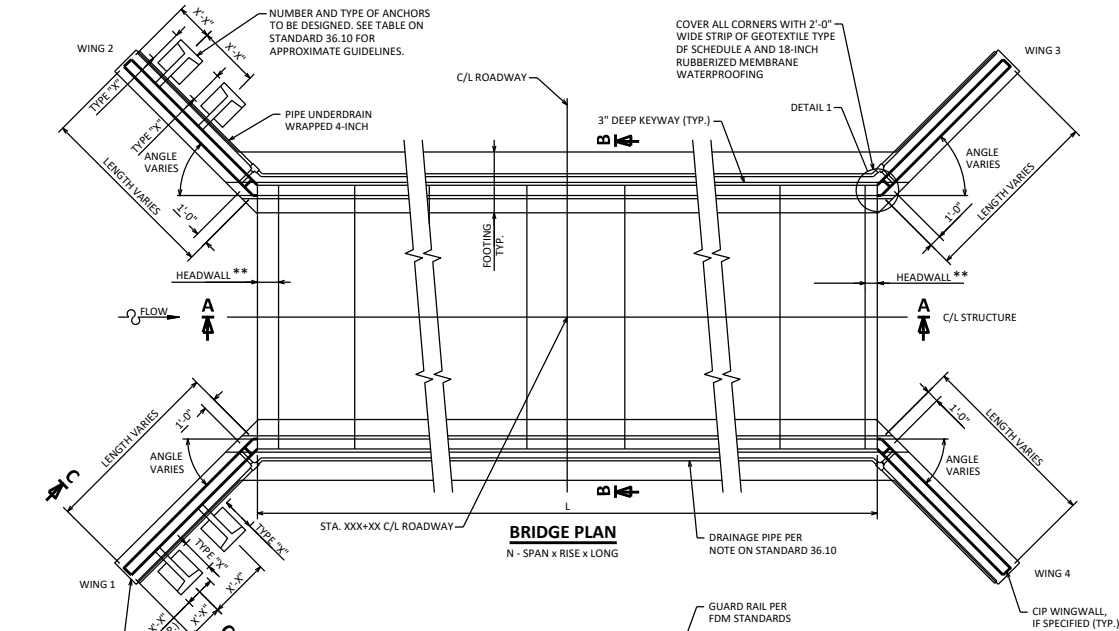
AT ANY TIME DURING PLACEMENT OF THE BACKFILL, DO NOT PERMIT A DIFFERENCE IN FILL ELEVATION ON THE SIDES OF THE CULVERT BARREL IN EXCESS OF 2'-0" DURING COMPACTION OF THE BACKFILL, DO NOT ALLOW THE WHEELS OF ROLLERS TO COME CLOSER THAN 1'-0" TO THE FACE OF THE STRUCTURE.

DESIGNER NOTES:

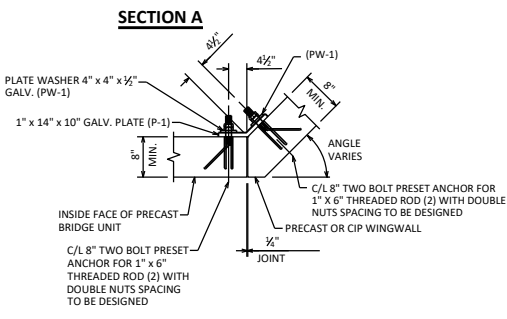
ALL BAR SPLICES TO BE "CLASS C" TENSION LAP SPLICES.

PRECAST CONCRETE CULVERT UNITS PLUS (N-1) JOINTS @ $\frac{1}{2}"$ TO $\frac{3}{4}"$ PER JOINT = L

** SEE STANDARD 36.13 AND STANDARD 36.14 FOR HEADWALL DETAILS AND FEASIBILITY GUIDELINES



SECTION C



DETAIL 1

NOTE: CONNECTION PLATES (P-1) MUST BE POSITIONED WITH SMALL DIAMETER HOLES TOWARD PRECAST BRIDGE UNIT

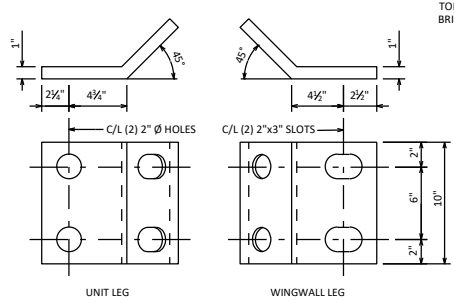
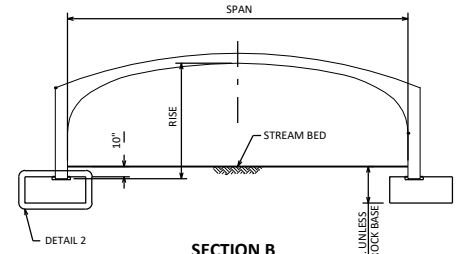
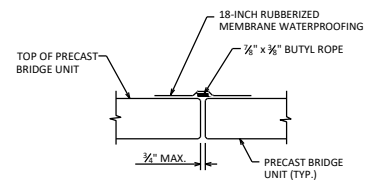


PLATE P-1

PLATE, 1" x 14" x 10"
NOTE: PLATE LENGTH AND THICKNESS SHALL BE INCREASED AS REQUIRED BY DESIGN.



SECTION B



TYPICAL JOINT SEAL DETAIL

PRECAST THREE-SIDED BOX CULVERT LAYOUT DESIGNS

APPROVED: *Laura Shadewald* DATE: 7-18