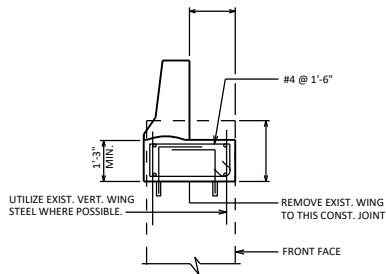
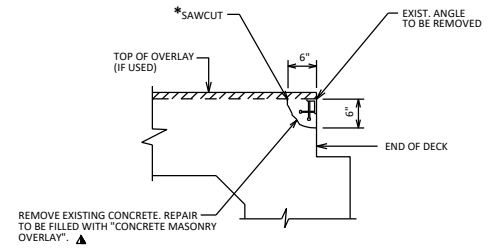


RUPTURED VOID REPAIR



SECTION THRU PARAPET ON WING



SECTION AT END OF SLAB

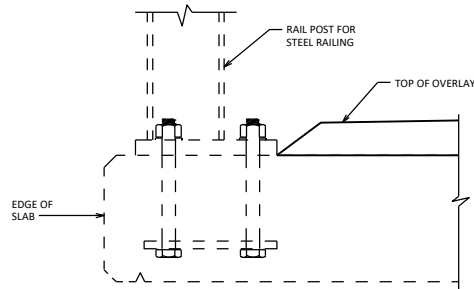
509.0301	PREPARATION DECKS TYPE 1	SY
509.0302	PREPARATION DECKS TYPE 2	SY
* 509.0310.5	SAWING PAVEMENT DECK PREPARATION AREAS	LF
509.2000	FULL-DEPTH DECK REPAIR	SY
▲ 509.2500	CONCRETE MASONRY OVERLAY DECKS	CY

DESIGNER NOTES

* "SAWING PAVEMENT DECK PREPARATION AREAS" NOT REQUIRED FOR CONCRETE OVERLAYS.

▲ USE "CONCRETE MASONRY DECK REPAIR" (SPV.0035) FOR DECK REPAIRS UNDER POLYMER, ASPHALTIC, OR POLYMER MOD. ASPHALTIC OVERLAYS. USE "CONCRETE MASONRY DECK REPAIR" FOR DECK REPAIRS WITHOUT OVERLAYS.

PROVIDE (IF AVAILABLE) THE MOST CURRENT DECK CONDITION ASSESSMENT SURVEY ON PLANS. INCLUDE SURVEY TYPE AND DATE COMPLETED. THERMOGRAPHY DATA CAN BE FOUND IN HSIS WITHIN GENERAL INVENTORY/FILE/INSPECTION/DATE/INSPECTION SPECIAL REPORT. DECK CONDITION ASSESSMENT SURVEY DATES CAN BE FOUND WITHIN INSPECTION/HISTORY UNDER THE "DEVAL" ACTIVITY TYPE.



SECTION THRU RAILING

ATTACHING PARAPETS OR RAILINGS TO BRIDGE DECKS WITH EPOXY ANCHORS IS NOT ALLOWED BY FHWA.

OVERLAY DETAILS



APPROVED: *Laura Shadewald* DATE: 7-22