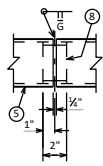
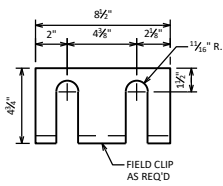
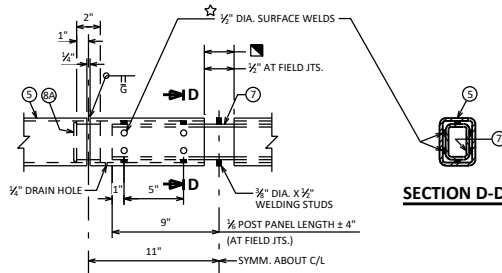


POST SHIM DETAILS



SHOP RAIL SPLICE DETAIL

(LOCATION MUST BE SHOWN ON SHOP DRAWINGS)



FIELD ERECTION JOINT DETAIL

MIN. 3/8\"/>

NOTES

BID ITEM SHALL BE "RAILING TUBULAR TYPE PF B-...", WHICH SHALL INCLUDE ALL STEEL ITEMS SHOWN, AND PAINTING.

POST BASE PLATES SHALL BE FLAT WITH ALL SURFACES SMOOTH AND FREE FROM WARP AND ALL EDGES SMOOTH, STRAIGHT AND VERTICAL. ALL PLATE CUTS SHALL BE MACHINE OR MACHINE FLAME CUTS.

NO. 2, NO. 7 AND NO. 8 SHALL CONFORM TO ASTM A709 GRADE 36. STRUCTURAL TUBING, NO. 1 AND NO. 5, SHALL CONFORM TO ASTM A500 GRADE B.

ANCHORAGES SHALL BE ACCURATELY PLACED TO PROVIDE CORRECT ALIGNMENT OF RAILING. SET POSTS NORMAL TO GRADE.

CUT BOTTOM OF POST TO MAKE POST VERTICAL IN TRANSVERSE DIRECTION.

STEEL SHIMS SHALL BE PROVIDED & USED UNDER BASE PLATES WHERE REQUIRED FOR ALIGNMENT.

FILL BOLT SLOT OPENINGS IN SHIMS AND PLATE NO. 2 AND CAULK AROUND PERIMETER OF PLATE NO. 2 WITH NON-STAINING GRAY NON-BITUMINOUS JOINT SEALER.

ALL JOINTS IN CONCRETE PARAPET ARE TO BE VERTICAL.

AFTER FABRICATION, ALL MATERIAL EXCEPT ANCHORAGE NO. 3 & 4 & SHIMS SHALL BE PAINTED WITH A THREE COAT ZINC-RICH EPOXY SYSTEM PER WISDOT STANDARD SPECIFICATION, SECTION 517, EPOXY SYSTEM. SHIMS SHALL BE GIVEN ONE COAT OF ZINC RICH PRIMER PAINT. THE FINISH COLOR SHALL BE AMS STD. COLOR NO. 1.

3/4\"/>

RAILING SHALL BE FABRICATED IN LENGTHS THAT INCLUDE 3 OR 4 POSTS.

TOUCH-UP PAINTING TO BE DONE AT COMPLETION OF STEEL RAILING INSTALLATION TO THE SATISFACTION OF THE ENGINEER AT NO EXTRA COST.

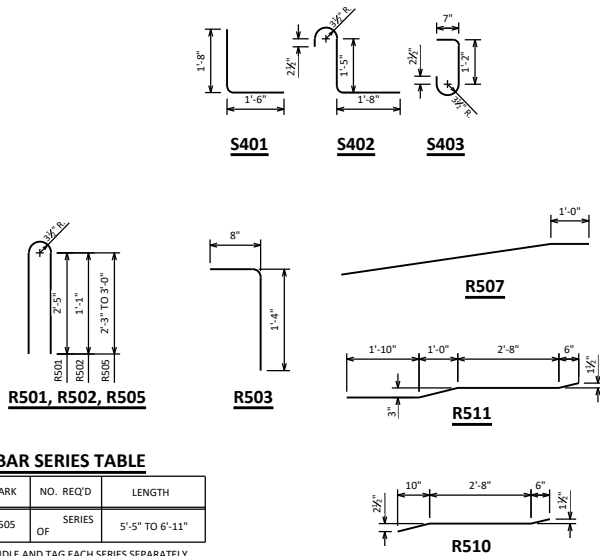
SEE STD. 30.07 FOR BEAM GUARD ANCHOR ASSEMBLY DETAILS.

THIS RAILING MEETS NCHRP REPORT 350 EVALUATION CRITERIA FOR TEST LEVEL 2 (TL-2).

RDWY. OPENING OR 2 1/2\"/>

LEGEND

- 1 TS 4 x 4 x 0.25 x 1'-9 1/2\"/>
- 2 PLATE 3/4\"/>
- 3 3/4\"/>
- 4 BAR 3/4\"/>
- 5 TS 4 x 3 x 0.25 STRUCTURAL TUBING. ATTACK TO NO. 1 WITH BOLTS NO. 6. PROVIDE 1 1/2\"/>
- 6 3/4\"/>
- 7 RECTANGULAR SLEEVE FABRICATED FROM 3/4\"/>
- 8 RECTANGULAR SLEEVE FABRICATED FROM 3/4\"/>
- 9 3/4\"/>



BAR SERIES TABLE

MARK	NO. REQ'D	LENGTH
R505	OF SERIES	5'-5\"/>

BUNDLE AND TAG EACH SERIES SEPARATELY.

BILL OF BARS

NOTE: THE FIRST OR FIRST TWO DIGITS OF THE BAR MARK SIGNIFIES THE BAR SIZE.

BAR MARK	Qty.	NO. REQ'D	LENGTH	Rein.	BAR SERIES	LOCATION
S401	X		3'-0"	X		PARAPET VERT.
S402	X		4'-1"	X		PARAPET VERT.
S403	X		2'-9"	X		PARAPET VERT.
S404	X					PARAPET HORIZ.
R501	X		5'-9"	X		PARAPET VERT.
R502	X		3'-1"	X		PARAPET VERT.
R503	X		1'-11"	X		PARAPET VERT.
R504	X		3'-4"			PARAPET VERT.
R505	X		6'-2"	X	▲	PARAPET VERT.
R506	X					PARAPET HORIZ.
R507	X			X		PARAPET HORIZ.
R508	X		4'-0"			PARAPET HORIZ.
R509	X		5'-8"			PARAPET HORIZ.
R510	X		4'-0"	X		PARAPET HORIZ.
R511	X		6'-0"	X		PARAPET HORIZ.
R512	X					PARAPET HORIZ.
R513	X					PARAPET HORIZ.

▲ LENGTH SHOWN FOR BAR IS AN AVERAGE LENGTH AND SHOULD ONLY BE USED FOR BAR WEIGHT CALCULATIONS. SEE BAR SERIES TABLE FOR ACTUAL LENGTHS.

RAILING TUBULAR TYPE 'PF' DETAILS

BUREAU OF
STRUCTURES

DATE:
1-19

APPROVED: *Laura Shadewald*