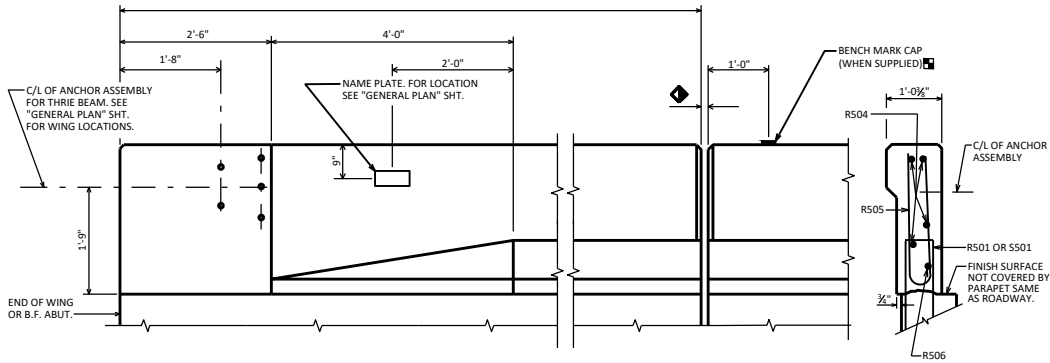
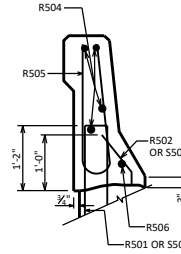


AVOID PLACING A BENCH MARK CAP BELOW A RAIL OR FENCE SYSTEM THAT IS ATTACHED TO THE TOP OF THE PARAPET.

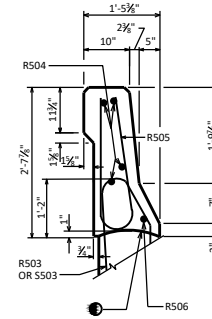


INSIDE ELEVATION

SECTION A



SECTION B

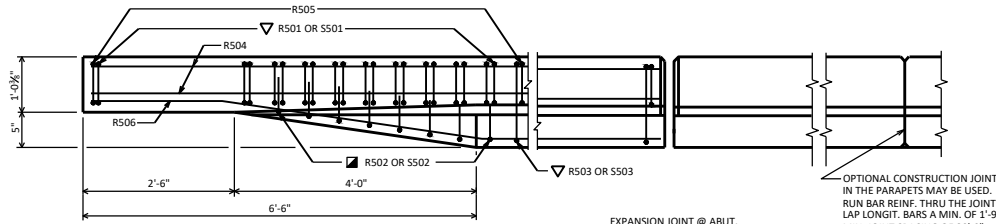


SECTION C

BILL OF BARS

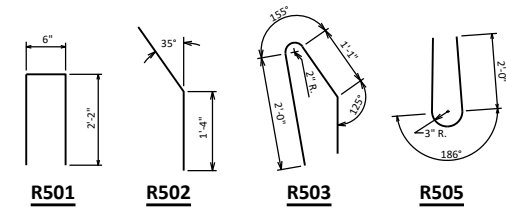
FOR ABUTMENT PARAPETS					
BAR MARK	CO ₂	ABUT.	LENGTH	BENT	LOCATION
R501	X		4'-7"	X	PARAPET VERT.
R502	X		2'-4"	X	PARAPET VERT.
R503	X		4'-7"	X	PARAPET VERT.
R504	X		4'-10"	X	PARAPET HORIZ.
R505	X		4'-10"	X	PARAPET VERT.
R506	X			X	PARAPET HORIZ.
S501	X		4'-5"	X	PARAPET VERT.
S502	X		2'-4"	X	PARAPET VERT.
S503	X		4'-2"	X	PARAPET VERT.

ROADWAY OPENING OR 2 1/2" MIN. FOR EXPANSION JOINT. USE 1/2" OPENING WITH FILLER FOR A1 ABUTMENTS.



PLAN

EXPANSION JOINT @ ABUT. 0° SKEW SHOWN. MATCH EXP. JT. OPENING. FOR TYPE A1 ABUT., USE 1/2" FILLER TO TOP OF PARAPET. SEE STD. 12.01.

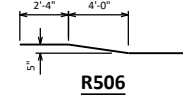


R501

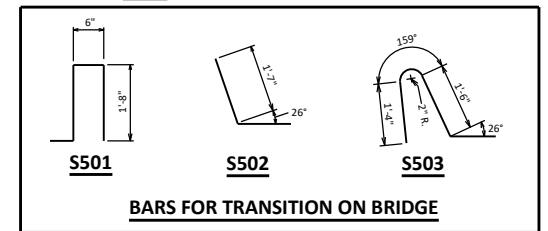
R502

R503

R505



R506

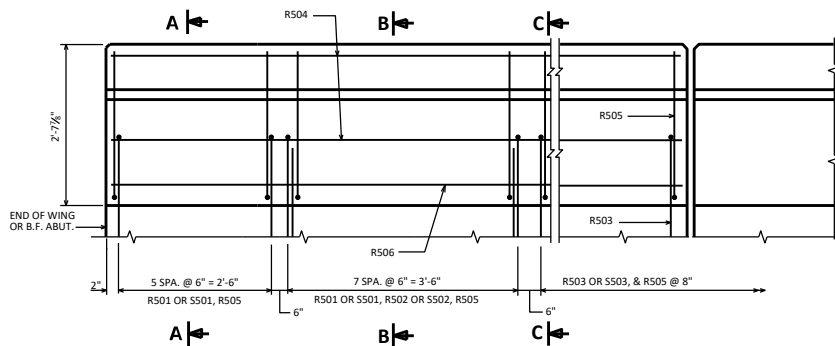


S501

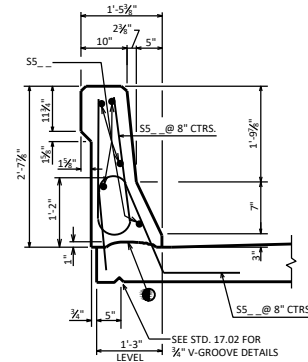
S502

S503

BARS FOR TRANSITION ON BRIDGE



OUTSIDE ELEVATION



SECTION THRU PARAPET ON BRIDGE

AREA = 2.58 SF
WEIGHT = 387 LB/FT

CONST. JOINT - STRIKE OFF AS SHOWN.

R502 BARS MAY BE PLACED AFTER CONCRETE IS POURED BUT BEFORE INITIAL SET HAS TAKEN PLACE. USE CARE TO PLACE R502 OR S502 BARS CORRECTLY ALONG TRANSITION OF PARAPET.

R501 AND R503 BARS TO BE TIED TO WING STEEL BEFORE WING IS POURED.

A R503 BAR MAY BE USED IN LIEU OF A S503 BAR ADJACENT TO THE PAVING NOTCH ON TYPE A1 ABUTMENTS.

SLOPED FACE PARAPET 'LF'



APPROVED: *Laura Shadewald*

DATE: 1-19