

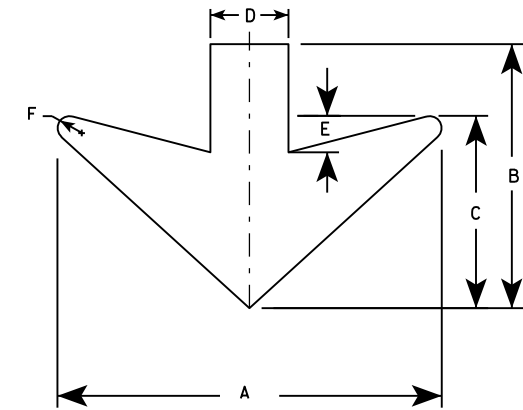
Type "A" & "B"

Type "A"

Copy Size	A	B	C	D	E	F	G
13.33 u.c. 10", 12" Caps	18 1/4	29 1/4	14	6	1 1/2	4 1/2	3/4
16" U. C.	22 1/4	35 5/8	17	7 1/8	1 3/4	5 3/8	1

Type "B"

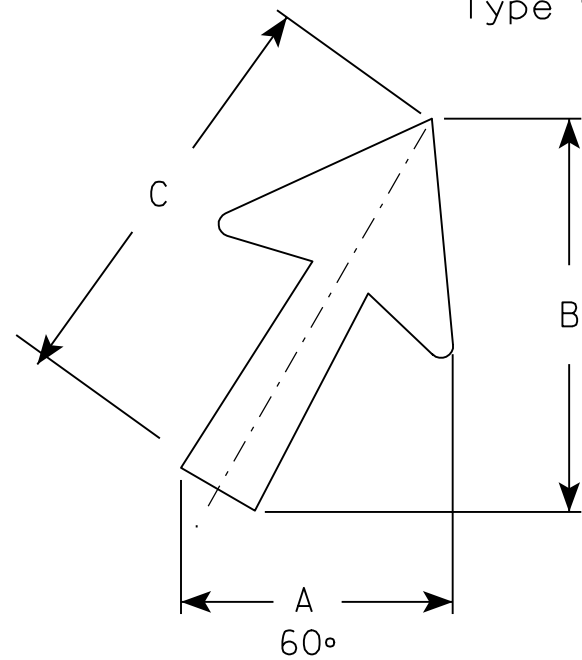
Copy Size	A	B	C	D	E	F	G
10" Caps	14 1/4	17 1/4	9 7/8	4 1/2	1 3/8	3 3/8	3/4
13.33 u.c. 12" Caps	17 1/2	20 1/4	11 3/4	5 5/8	1 1/2	4 3/8	7/8
16" U. C.	21 7/8	25	14 1/4	6 3/4	1 3/4	5	1



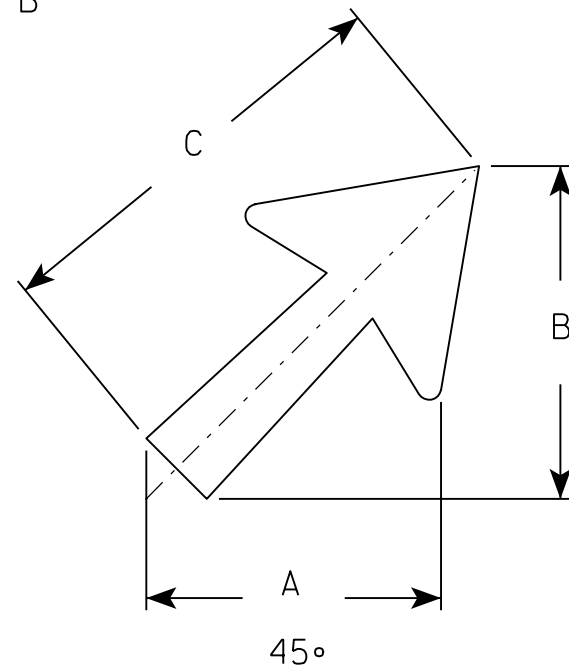
Type "C"

Type "C"

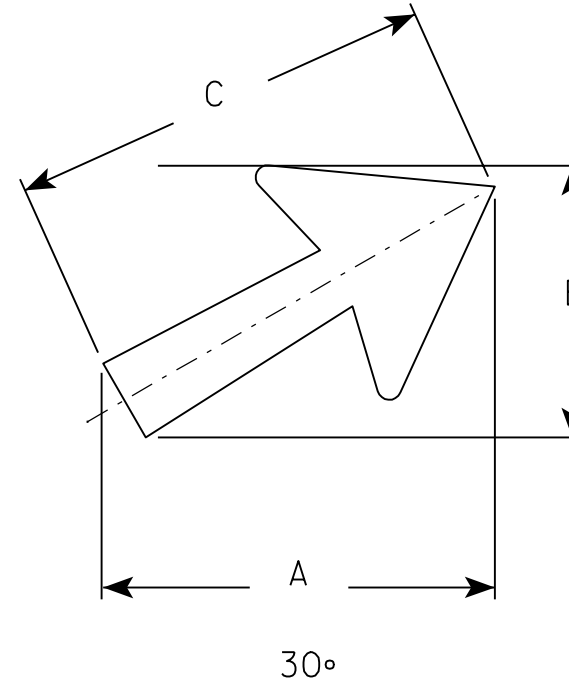
Copy Size	A	B	C	D	E	F
Overhead	32	22	16	6 1/2	3	1
Minimum	24	16	12 1/4	5	1 5/8	3/4



Type "A"



Type "B"



NOTES

1. Arrows to be of same material as other message units on each sign.
2. Taper should be held constant for longer or shorter shaft lengths on Type "A" & "B" arrows.

Angle	Arrow Size	A	B	C
60°	10.67" - 13" U.C. 10"- 12" Caps	18 1/2	27	29 1/4
	15" Caps - 16" U.C.	22 5/8	32 3/4	35 5/8
45°	10.67" - 13" U.C. 10"- 12" Caps	23	23	29 1/4
	15" Caps - 16" U.C.	28	28	35 5/8
30°	10.67" - 13" U.C. 10"- 12" Caps	27	18 1/2	29 1/4
	15" Caps - 16" U.C.	32 3/4	22 5/8	35 5/8

Angle	Arrow Size	A	B	C
60°	8" - 10" Caps, 10.67 U.C.	12 1/2	16 1/8	17 1/4
	12" Caps - 13" U.C.	15 1/2	19	20 1/4
	15" Caps - 16" U.C.	19 1/8	23 1/2	25
45°	8" - 10" Caps, 10.67 U.C.	14	14	17 1/4
	12" Caps - 13" U.C.	16 5/8	16 5/8	20 1/4
	15" Caps - 16" U.C.	20 3/8	20 3/8	25
30°	8" - 10" Caps, 10.67 U.C.	16 1/8	12 1/2	17 1/4
	12" Caps - 13" U.C.	19	15 1/2	20 1/4
	15" Caps - 16" U.C.	23 1/2	19 1/8	25

STANDARD ARROWS
FOR LARGE GUIDE SIGNS

WISCONSIN DEPT OF TRANSPORTATION

APPROVED

Chester J. Spang
for State Traffic Engineer

DATE 10/8/82 PLATE NO. A1-1.4

PROJECT NO:

SHEET NO:

E