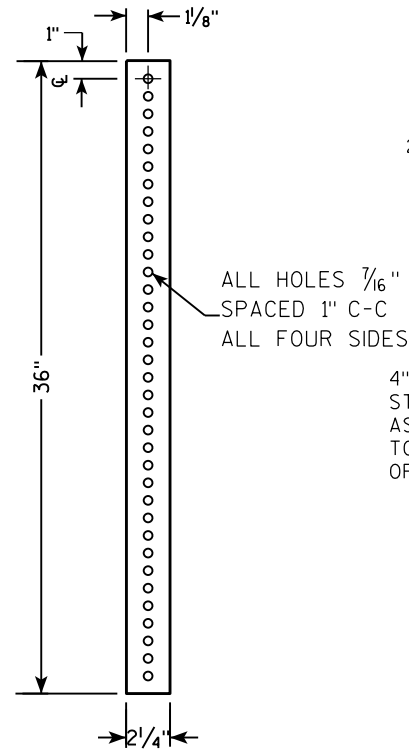
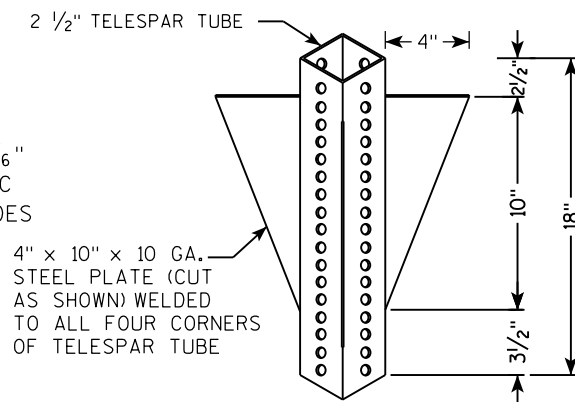


**TELESCOPIC TUBING ANCHORS  
TWO PIECE SYSTEM**

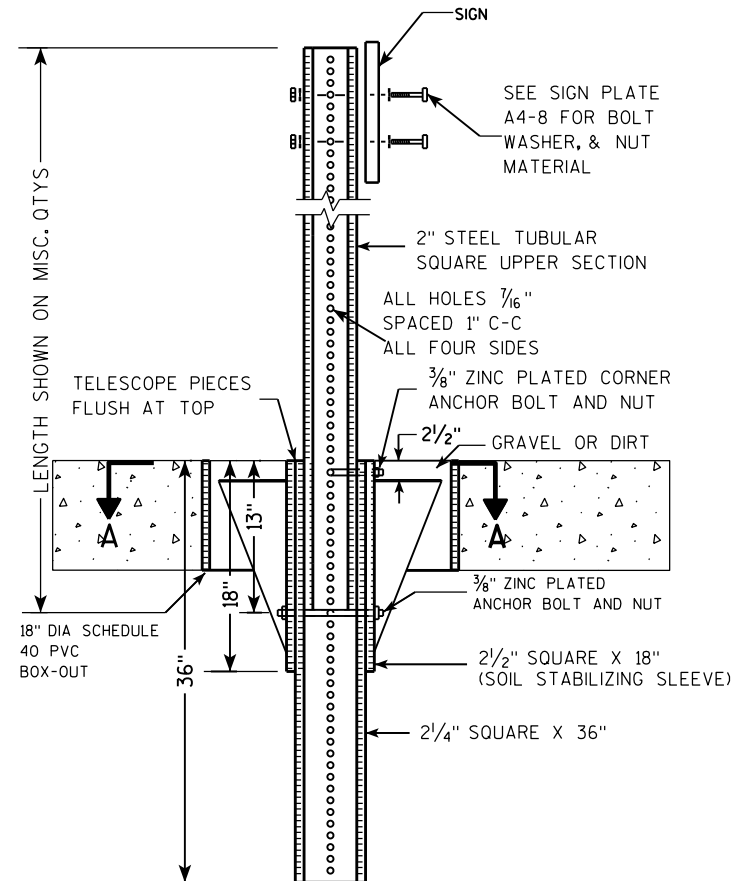
2 1/4" SQUARE  
12 GAUGE  
PERFORATED  
GALVANIZED FINISH



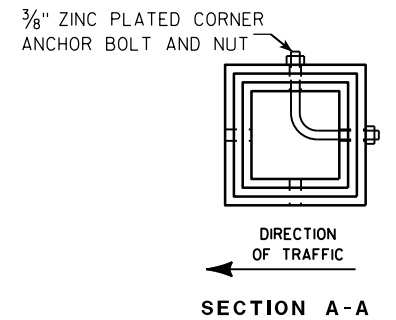
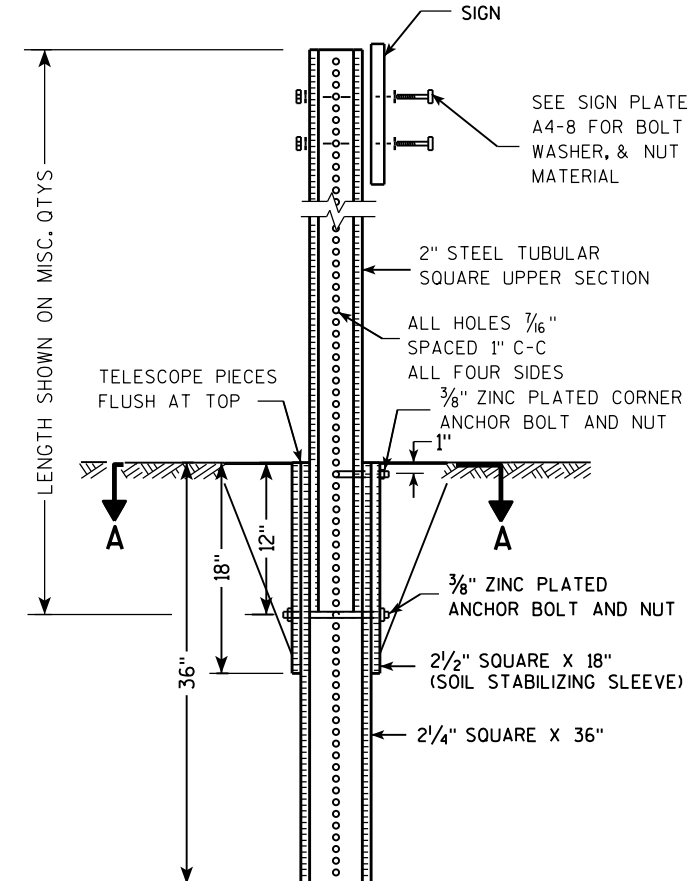
2 1/2" SQUARE  
12 GAUGE  
OMNI-DIRECTIONAL  
PERFORATED  
SOIL STABILIZING SLEEVE  
GALVANIZED FINISH



**DETAIL OF TUBULAR STEEL SIGN POST  
(IN POURED CONCRETE OR ASPHALT)**



**DETAIL OF TUBULAR STEEL SIGN POST  
(IN LOCATIONS OTHER THAN POURED CONCRETE OR ASPHALT)**



Area of Sign Installation (Sq. Ft.)	Number of Required Posts
9 or less	1
Greater than 9 less than or equal to 18	2
Greater than 18 less than or equal to 27	3

Signs wider than 3 feet or larger than 9 sq. ft shall be mounted on multiple posts (see above table).

**TUBULAR STEEL  
SIGN POST  
A4-9**

WISCONSIN DEPT OF TRANSPORTATION

APPROVED *Matthew R. Rauch*  
for State Traffic Engineer

DATE 2/05/15 PLATE NO. A4-9.9