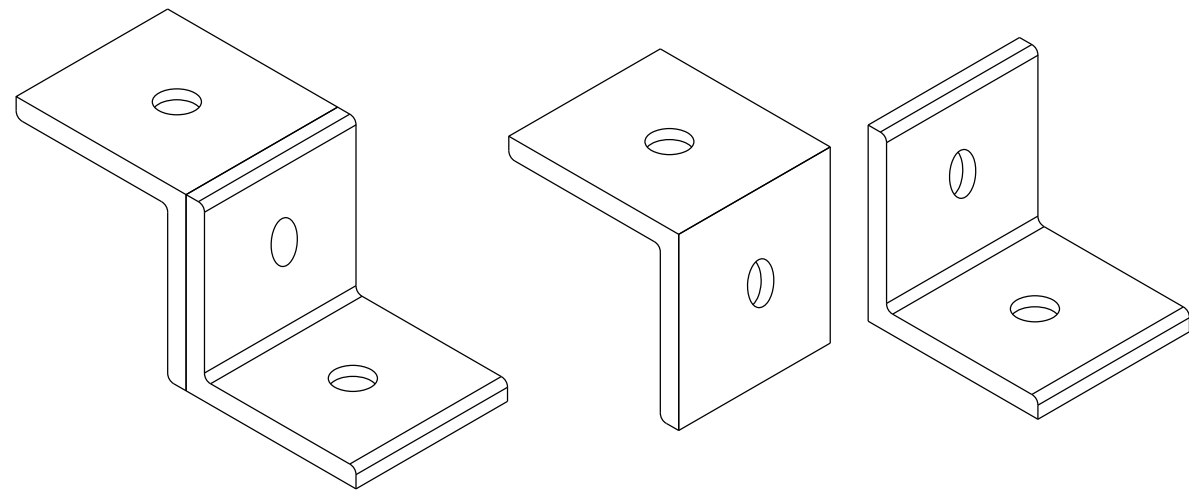


ISOMETRIC VIEW



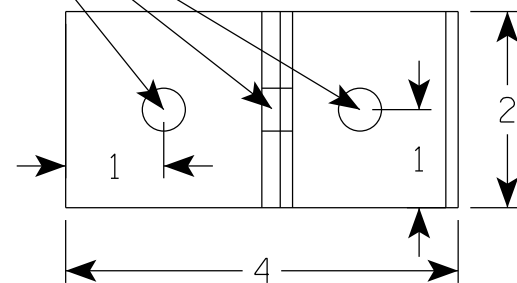
NOTES

1. Must be capable of permanent attachment to a wood or steel channel sign post utilizing a 3"x3/8" lag screw or the proper bolt specified on the A4-8 sign plate.
2. Shall be made with aluminum, and incorporate no welds, no hinged components, no threaded lock-type components, and no parts which are loose or can be separated from the main body.
3. Shall have rounded edges with at least 1/16" radii.
4. Must use Bracket Hardware stated on table below
5. Sign attachment to bracket shall utilize 3/8"x1 1/2" machine bolt with nuts and washers in accordance with the A4-8 sign plate.

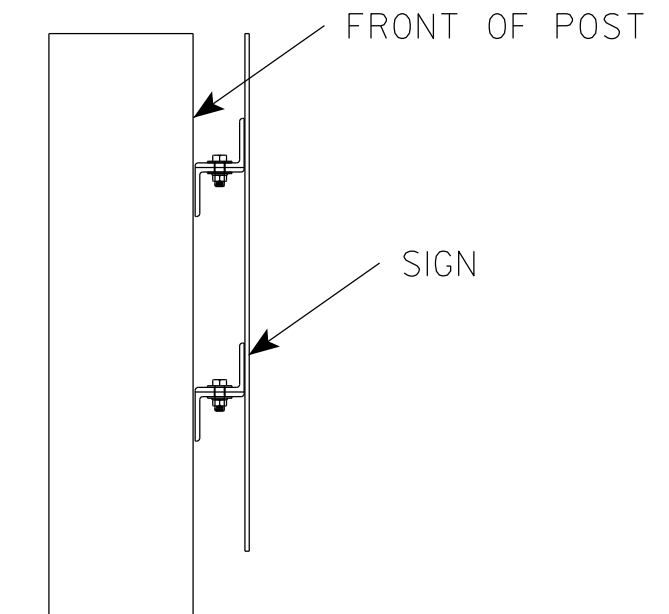
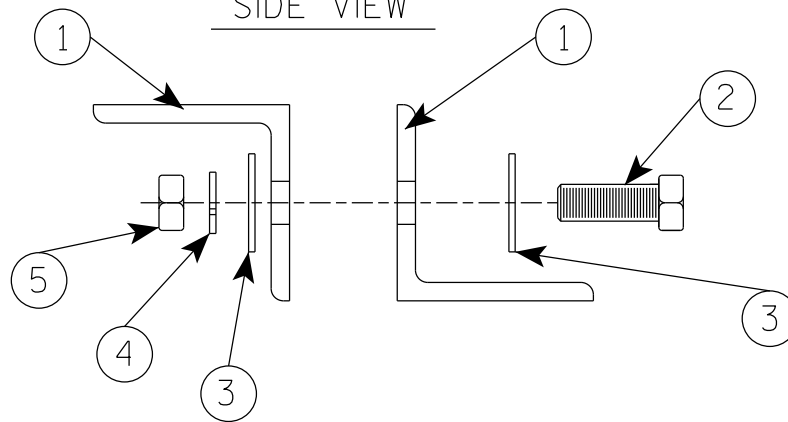
INSTALLATION ON SIGN POST

7/16" DIA. MOUNTING HOLE

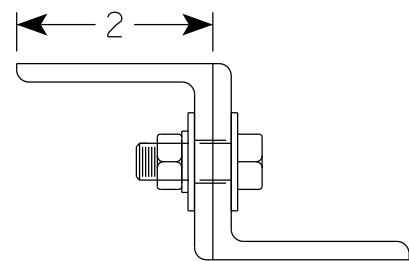
TOP VIEW



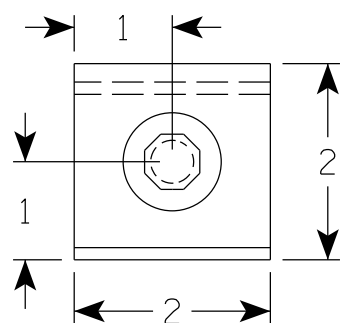
SIDE VIEW



SIDE VIEW



END VIEW



NO	PART	DESCRIPTION	MATERIAL	QTY.
1	ANGLE	2"x2"x.1875" ALUM	6061-T6 (SS)	2
2	HEX-BOLT .375-16x1x1-S	GRADE 2 ZINC PLATED	STEEL	1
3	FLAT WASHER .375	GRADE 2 ZINC PLATED	STEEL	2
4	LOCK WASHER .375	GRADE 2 ZINC PLATED	STEEL	1
5	HEX-NUT .375-16-D-N	GRADE 2 ZINC PLATED	STEEL	1

CHEVRON MOUNTING BRACKET

WISCONSIN DEPT OF TRANSPORTATION

APPROVED *Matthew R. Rauch*
for State Traffic Engineer

DATE 12/6/23 PLATE NO. A5-11.2

PROJECT NO:

HWY:

COUNTY:

SHEET NO:

E