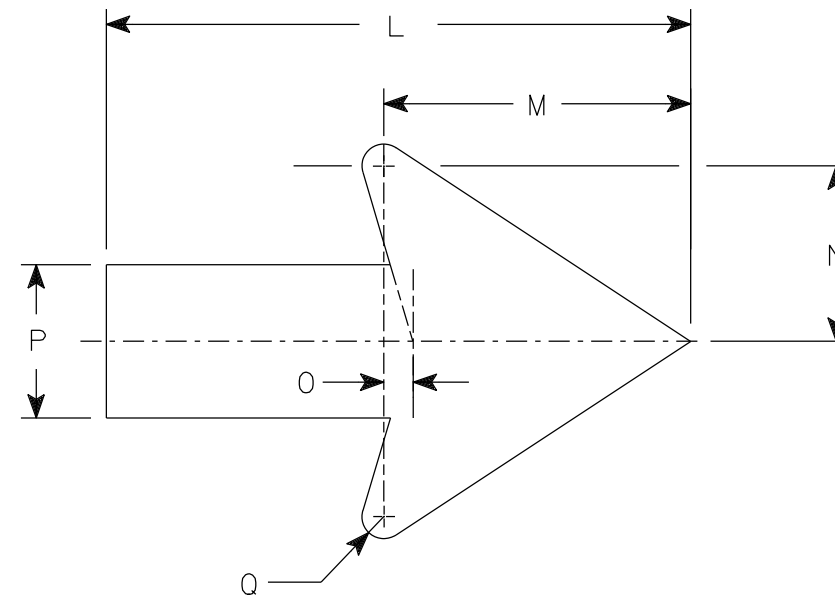


NOTES

1. Sign is Type II - Type H Reflective
2. Color:
Background - White
Message - Black
3. Message Series - B
4. The D4-51L is the same as a D4-51R except the arrow is reversed.



D4-51R



Arrow Detail

SIZE	A	B	C	D	E	F	G	H	I	J	K	L	M	N	O	P	Q	R	S	T	U	V	W	X	Y	Z	Area sq. ft.
1																											
2S	24		1 1/2	3/8	1/2	5	4	3 1/2	8	8 7/8	9 1/8	10	5 1/4	3	1/2	2 5/8	3/8										4.0
2M	24		1 1/2	3/8	1/2	5	4	3 1/2	8	8 7/8	9 1/8	10	5 1/4	3	1/2	2 5/8	3/8										4.0
3																											
4																											
5																											

STANDARD SIGN
D4-51

WISCONSIN DEPT OF TRANSPORTATION

APPROVED *Matthew R. Rauch*
For State Traffic Engineer

DATE 1/24/2023 PLATE NO. D4-51.10

PROJECT NO:

SHEET NO:

E