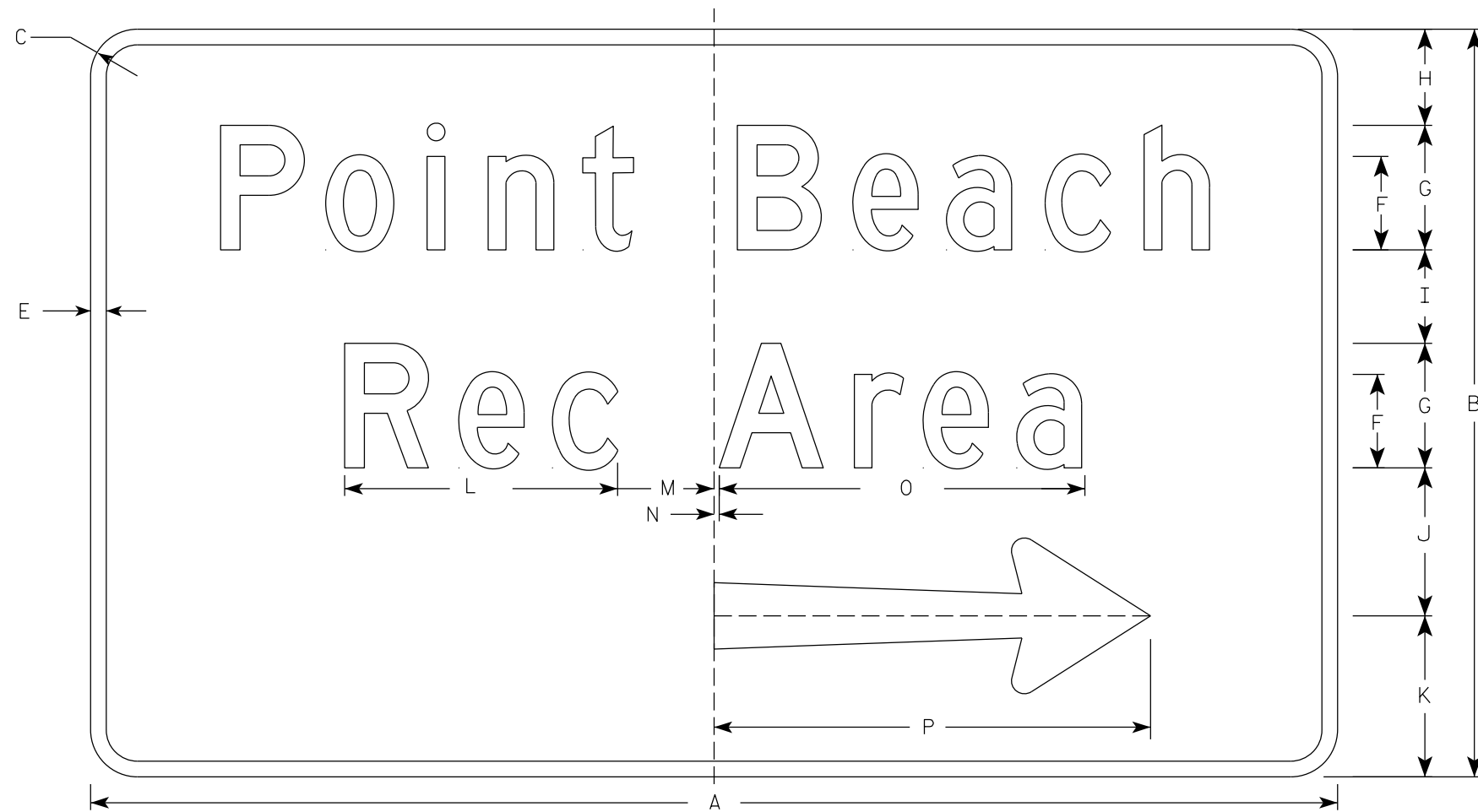
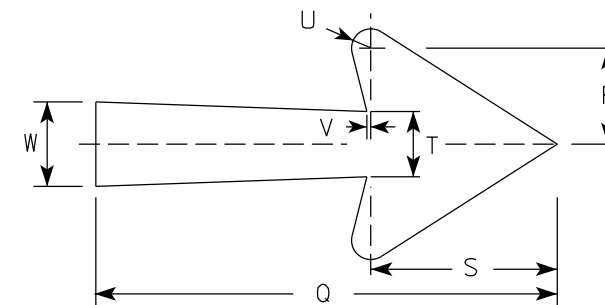


NOTES

1. Sign is Type II - Type H Reflective
2. Color:
Background - Brown
Message - White
3. Message Series - D
4. D7-77L is same as D7-77R except the arrow is reversed.
5. Substitute appropriate name and adjust spacing as required to achieve proper balance. When necessary to accommodate name, lengthen board by 6" increments. Minimum sign length is 48".
6. Use 15" arrow for sign lengths up to 54" and use 21" arrow for sign lengths of 60" or larger for size 2 signs. Use 21" arrow for sign lengths up to 60 and use 27" arrow for sign lengths of 66" or larger for size 3 signs.



D7-77R



Arrow Detail

| SIZE | A | B | C | D | E | F | G | H | I | J | K | L | M | N | O | P | Q | R | S | T | U | V | W | X | Y | Z | Area sq. ft. |
|------|--------|----|-------|---|-----|-------|---|-------|-------|-------|-------|--------|-------|-----|--------|----|----|-------|-------|-------|-----|-----|-------|---|---|---|--------------|
| 2 | Varies | 36 | 2 1/4 | | 3/4 | 4 1/2 | 6 | 4 5/8 | 4 1/2 | 7 1/8 | 7 3/4 | 13 1/8 | 4 5/8 | 3/8 | 17 1/2 | 21 | 15 | 3 1/8 | 6 1/8 | 2 1/8 | 5/8 | 1/8 | 3 1/4 | | | | Varies |
| 3 | Varies | 48 | 3 | | 1 | 6 | 8 | 6 | 6 | 10 | 10 | 18 | 6 3/8 | 5/8 | 23 3/4 | 27 | 21 | 4 | 7 7/8 | 2 3/4 | 3/4 | 1/4 | 4 1/4 | | | | Varies |
| 4 | | | | | | | | | | | | | | | | | | | | | | | | | | | |
| 5 | | | | | | | | | | | | | | | | | | | | | | | | | | | |

STANDARD SIGN
D7-77

WISCONSIN DEPT OF TRANSPORTATION

APPROVED *Matthew R. Raub*
For State Traffic Engineer

DATE 4/18/19 PLATE NO. D7-77.6

7

7