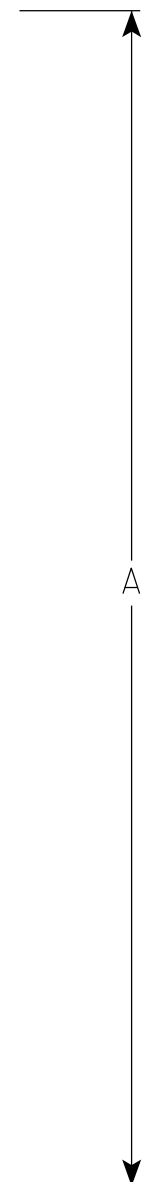
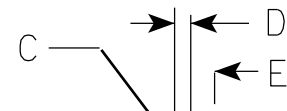


NOTES

1. Sign is Type II - Type H Reflective
2. Color:
Background - White except as noted
Message - Blue
3. Message Series - Rock River Trail - 1 1/2" UC Helvetica Black
Scenic and Historic Trail - 1 13/16" UC Helvetica Inserat Roman Medium
4. Contact WisDOT with any questions.



M1-92

7

7

SIZE	A	B	C	D	E	F	G	H	I	J	K	L	M	N	O	P	Q	R	S	T	U	V	W	X	Y	Z	Area sq. ft.
1																											
2	24		1 1/2	1/2	5/8																						4.0
2M	24		1 1/2	1/2	5/8																						4.0
3	36		2 1/4	5/8	3/4																						9.0
4	36		2 1/4	5/8	3/4																						9.0
5																											

STANDARD SIGN
M1-92

WISCONSIN DEPT OF TRANSPORTATION

APPROVED *Matthew R. Rauch*
for State Traffic Engineer

DATE 2/8/2023 PLATE NO. M1-92.4

PROJECT NO: _____ HWY: _____ COUNTY: _____ SHEET NO: **E**