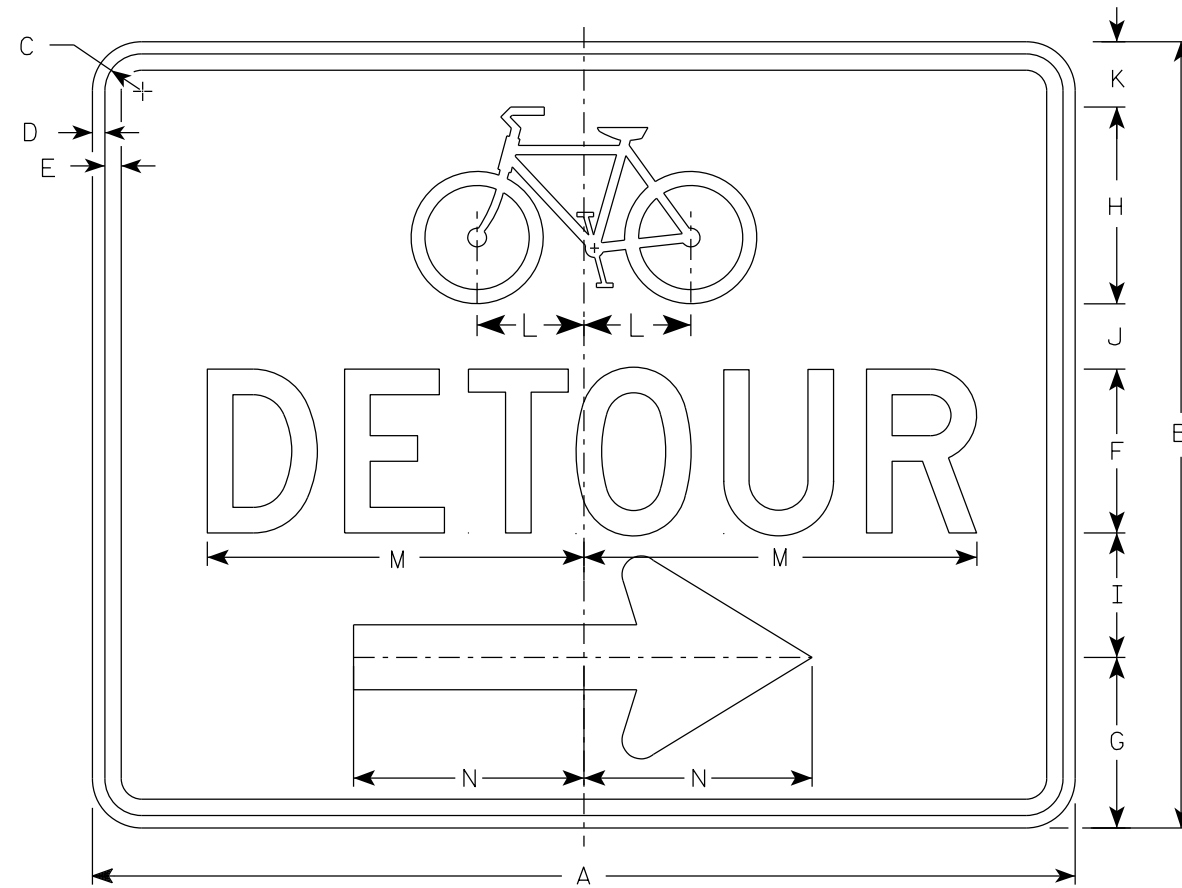
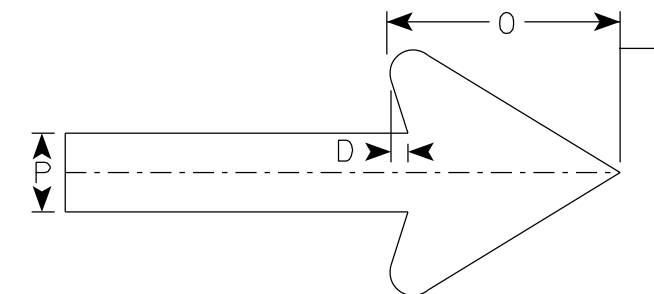


NOTES

1. Sign is Type II-Type F Reflective
2. Color:  
Background - Orange  
Message - Black
3. Message Series - D
4. Corners may be square or rounded when base material is plywood but borders shall be rounded as shown. When base material is metal, the corners and borders shall be rounded.
5. M4-9CL is the same as M4-9CR except the arrow is reversed.



M4-9CR



Arrow Detail

| SIZE | A  | B  | C     | D   | E   | F | G     | H | I     | J | K | L     | M      | N | O | P | Q | R | S | T | U | V | W | X | Y | Z | Area<br>sq. ft. |
|------|----|----|-------|-----|-----|---|-------|---|-------|---|---|-------|--------|---|---|---|---|---|---|---|---|---|---|---|---|---|-----------------|
| 1    |    |    |       |     |     |   |       |   |       |   |   |       |        |   |   |   |   |   |   |   |   |   |   |   |   |   |                 |
| 2S   | 30 | 24 | 1 1/8 | 3/8 | 1/2 | 5 | 5 1/4 | 6 | 3 3/4 | 2 | 2 | 3 1/4 | 11 3/4 | 7 | 6 | 2 |   |   |   |   |   |   |   |   |   |   | 5.00            |
| 2M   | 30 | 24 | 1 1/8 | 3/8 | 1/2 | 5 | 5 1/4 | 6 | 3 3/4 | 2 | 2 | 3 1/4 | 11 3/4 | 7 | 6 | 2 |   |   |   |   |   |   |   |   |   |   | 5.00            |
| 3    |    |    |       |     |     |   |       |   |       |   |   |       |        |   |   |   |   |   |   |   |   |   |   |   |   |   |                 |
| 4    |    |    |       |     |     |   |       |   |       |   |   |       |        |   |   |   |   |   |   |   |   |   |   |   |   |   |                 |
| 5    |    |    |       |     |     |   |       |   |       |   |   |       |        |   |   |   |   |   |   |   |   |   |   |   |   |   |                 |

STANDARD SIGN  
M4-9C L&R

WISCONSIN DEPT OF TRANSPORTATION

APPROVED *Matthew R Rauch*  
For State Traffic Engineer

DATE 1/18/2023 PLATE NO. M4-9C.2

7

7