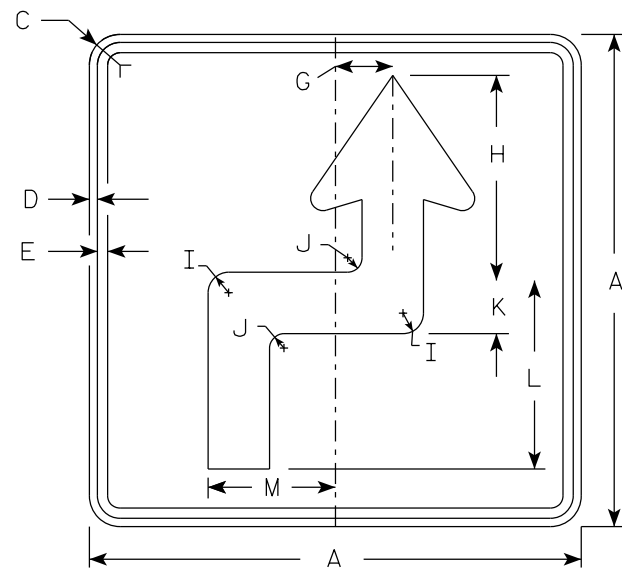
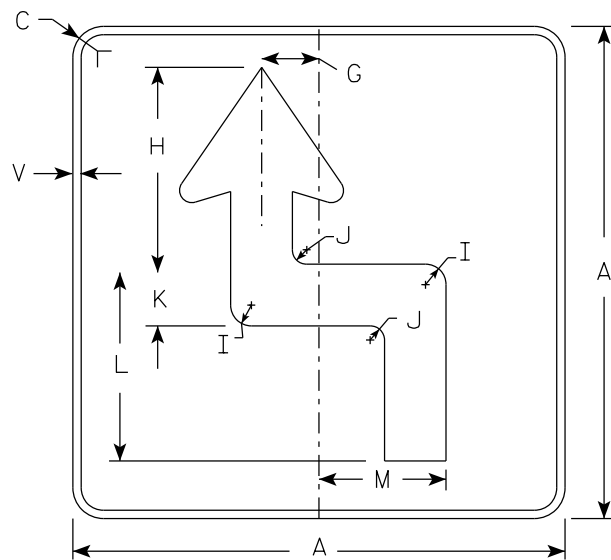


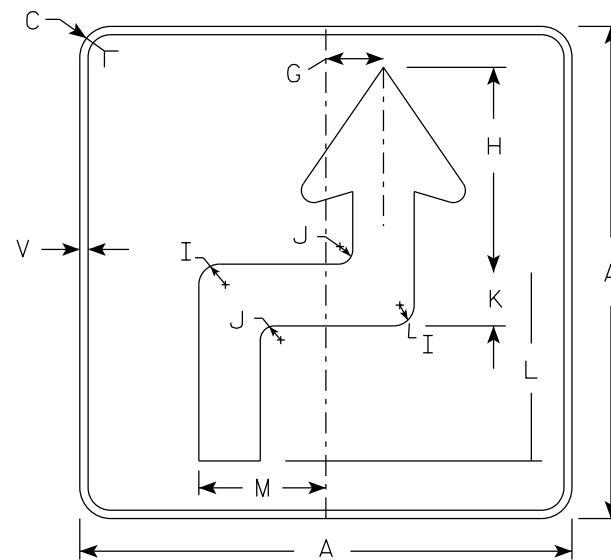
M5-51L
MM5-51L
M05-51L
MP5-51L



M5-51R
MM5-51R
M05-51R
MP5-51R

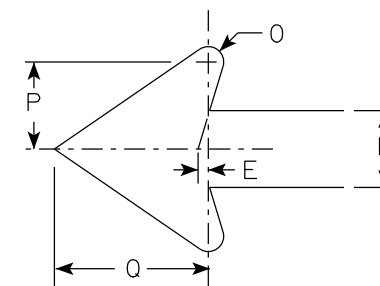


MB5-51L
MK5-51L
MN5-51L
MR5-51L



MB5-51R
MK5-51R
MN5-51R
MR5-51R

ARROW DETAIL



NOTES

- Signs are Type II - Type H except as Shown
- Color:
 - Background - See Note 4
 - Message - See note 4
- Corners may be square or rounded when base material is plywood but borders shall be rounded as shown. When base material is metal, the corners and borders shall be rounded.
- M5-51L and M5-51R Background - White
Message - Black
MB5-51L and MB5-51R Background - Blue
Message - White
MK5-51L and MK5-51R Background - Green
Message - White
MM5-51L and MM5-51R Background - White
Message - Green
MN5-51L and MN5-51R Background - Brown
Message - White
M05-51L and M05-51R Background - Orange - Type F Reflective
Message - Black
MP5-51L and MP5-51R Background - White
Message - Blue
MR5-51L and MR5-51R Background - Brown
Message - Yellow

7

7

SIZE	A	B	C	D	E	F	G	H	I	J	K	L	M	N	O	P	Q	R	S	T	U	V	W	X	Y	Z	Area sq. ft.
1																											
2S	21		1 1/2	3/8	3/8		2 1/2	8 3/4	7/8	5/8	2 1/4	8	5 3/8	2 5/8	1/2	3	5 1/4					1/2					3.06
2M	21		1 1/2	3/8	3/8		2 1/2	8 3/4	7/8	5/8	2 1/4	8	5 3/8	2 5/8	1/2	3	5 1/4					1/2					3.06
3	30		1 7/8	1/2	5/8		3 1/2	12 1/2	1 1/4	7/8	3 1/4	11 1/2	7 3/4	3 3/4	3/4	4 1/4	7 1/2					1/2					6.25
4	30		1 7/8	1/2	5/8		3 1/2	12 1/2	1 1/4	7/8	3 1/4	11 1/2	7 3/4	3 3/4	3/4	4 1/4	7 1/2					1/2					6.25
5	30		1 7/8	1/2	5/8		3 1/2	12 1/2	1 1/4	7/8	3 1/4	11 1/2	7 3/4	3 3/4	3/4	4 1/4	7 1/2					1/2					6.25

PROJECT NO: _____ HWY: _____ COUNTY: _____ SHEET NO: **E**