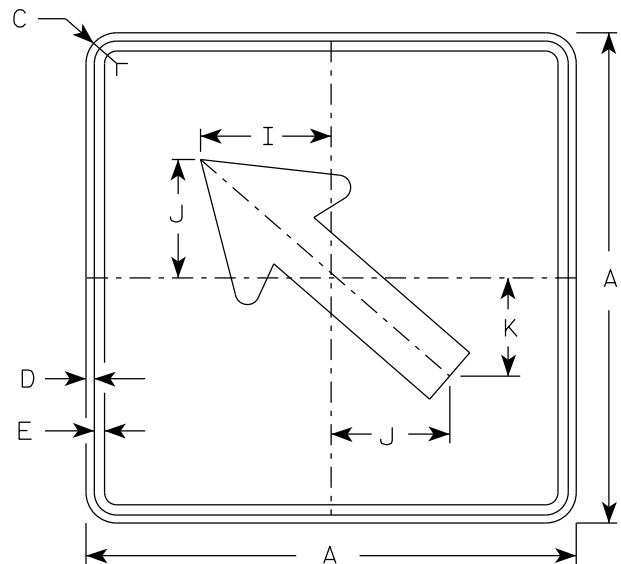
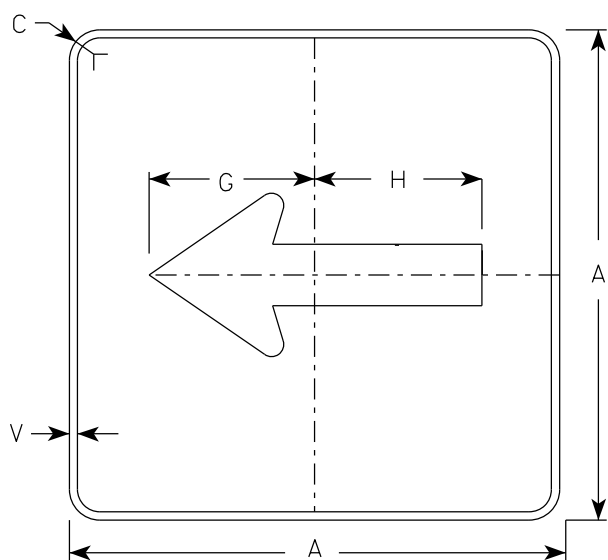


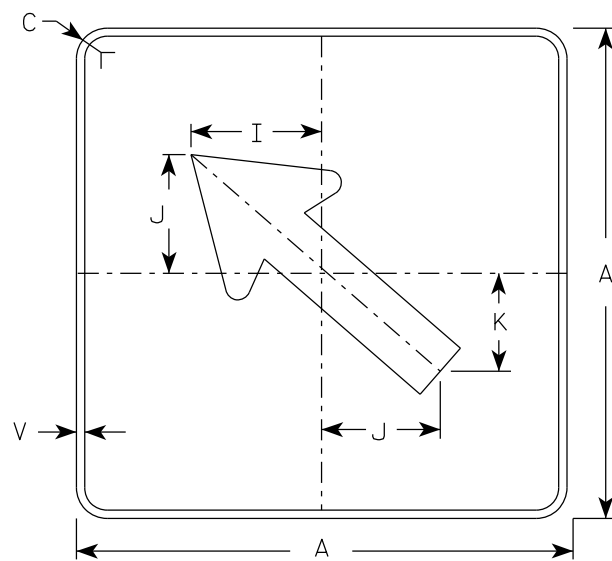
M6-1  
MM6-1  
M06-1  
MP6-1



M6-2  
MM6-2  
M06-2  
MP6-2



MB6-1  
MK6-1  
MN6-1  
MR6-1

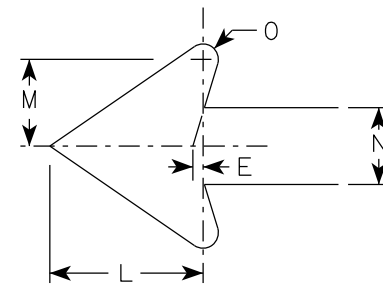


MB6-2  
MK6-2  
MN6-2  
MR6-2

**NOTES**

- Signs are Type II - Type H Reflective except as Shown
- Color:
  - Background - See note 4
  - Message - See note 4
- Corners may be square or rounded when base material is plywood but borders shall be rounded as shown. When base material is metal, the corners and borders shall be rounded.
- M6-1 and M6-2 Background - White  
Message - Black  
 MB6-1 and MB6-2 Background - Blue  
Message - White  
 MK6-1 and MK6-2 Background - Green  
Message - White  
 MM6-1 and MM6-2 Background - White  
Message - Green  
 MN6-1 and MN6-2 Background - Brown  
Message - White  
 M06-1 and M06-2 Background - Orange - Type F Reflective  
Message - Black  
 MP6-1 and MP6-2 Background - White  
Message - Blue  
 MR6-1 and MR6-2 Background - Brown  
Message - Yellow

**ARROW DETAIL**



SIZE	A	B	C	D	E	F	G	H	I	J	K	L	M	N	O	P	Q	R	S	T	U	V	W	X	Y	Z	Area sq. ft.
1																											
2S	21		1 1/2	3/8	3/8		7 1/2	7 1/8	5 5/8	5	4 1/4	5 1/4	3	2 5/8	1/2							1/2					3.06
2M	21		1 1/2	3/8	3/8		7 1/2	7 1/8	5 5/8	5	4 1/4	5 1/4	3	2 5/8	1/2							1/2					3.06
3	30		1 7/8	1/2	5/8		10 3/4	10 1/4	8	7 1/4	6	7 1/2	4 1/4	3 3/4	3/4							1/2					6.25
4	30		1 7/8	1/2	5/8		10 3/4	10 1/4	8	7 1/4	6	7 1/2	4 1/4	3 3/4	3/4							1/2					6.25
5	30		1 7/8	1/2	5/8		10 3/4	10 1/4	8	7 1/4	6	7 1/2	4 1/4	3 3/4	3/4							1/2					6.25

STANDARD SIGN  
M6-1 & M6-2  
SERIES

WISCONSIN DEPT OF TRANSPORTATION

APPROVED *Matthew R Rauch*  
For State Traffic Engineer

DATE 2/13/2023 PLATE NO. M6-1.16