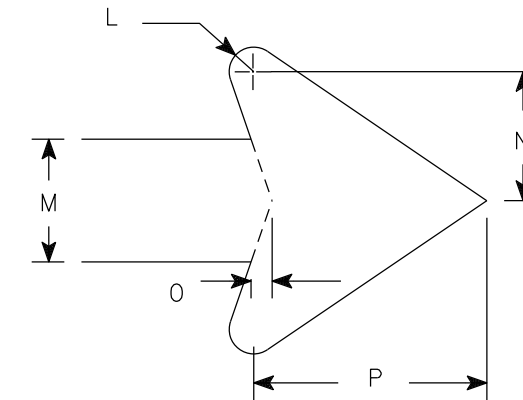
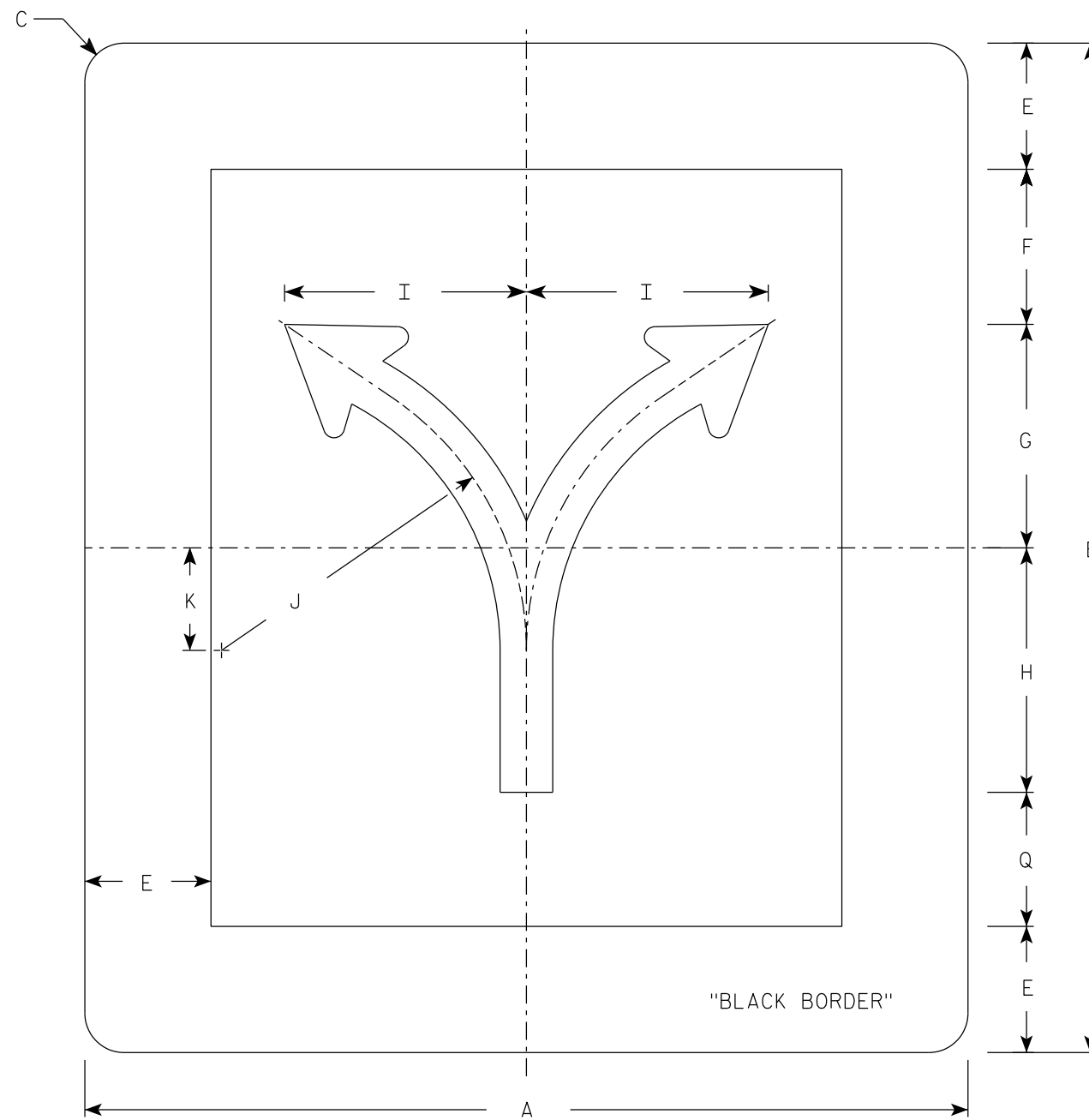


NOTES

1. Sign is Type II - Type H Reflective
2. Color:
Background - White
Message - Black
3. The 6" border is non-reflective black.



ARROW DETAIL

R3-6T

SIZE	A	B	C	D	E	F	G	H	I	J	K	L	M	N	O	P	Q	R	S	T	U	V	W	X	Y	Z	Area sq. ft.
1																											
2S	42	48	1 7/8		6	7 3/8	10 5/8	11 5/8	11 1/2	14 1/2	4 7/8	1/2	2 1/2	2 5/8	3/8	4 3/4	6 3/8										14.0
2M	42	48	1 7/8		6	7 3/8	10 5/8	11 5/8	11 1/2	14 1/2	4 7/8	1/2	2 1/2	2 5/8	3/8	4 3/4	6 3/8										14.0
3																											
4																											
5																											

STANDARD SIGN
R3-6T

WISCONSIN DEPT OF TRANSPORTATION

APPROVED *Matthew R Rauch*
for State Traffic Engineer

DATE 3/26/24 PLATE NO. R3-6T.7

7

7