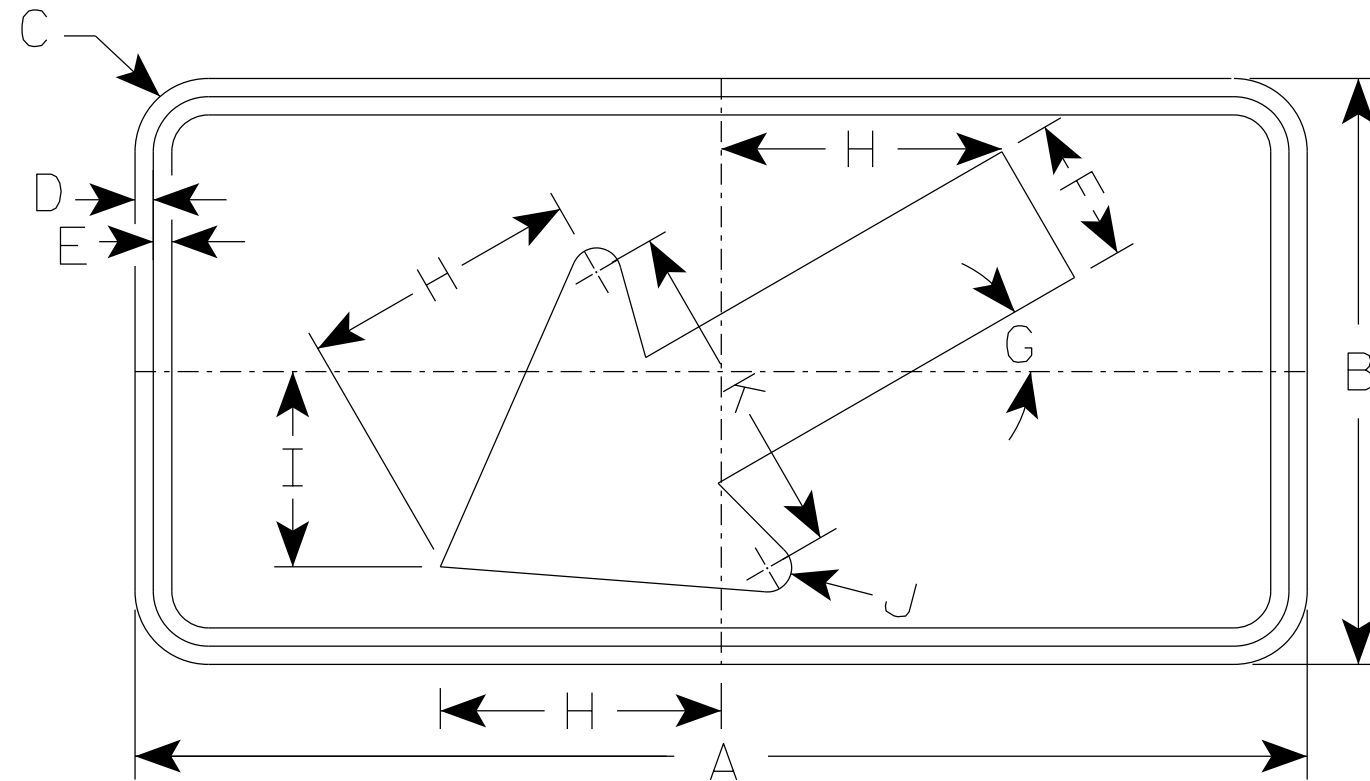


NOTES

1. Sign is Type II - Type F Reflective
2. Color:
Background - Yellow
Message - Black
3. W16-7R is the same as W16-7L
except the arrow is reversed along
the vertical centerline.



W16-7L

- * For 36" x 36" Warning Signs, use 30" x 18" W16-7L signs.
- * For 48" x 48" Warning Signs, use 48" x 24" W16-7L signs.

SIZE	A	B	C	D	E	F	G	H	I	J	K	L	M	N	O	P	Q	R	S	T	U	V	W	X	Y	Z	Area sq. ft.
1																											
2S	24	12	1 1/2	3/8	3/8	3	30°	5 3/4	4	1/2	7																2.0
* 2M	30	18	1 1/2	3/8	1/2	4 1/2	30°	8 1/2	6	5/8	10 1/4																3.75
* 3	30	18	1 1/2	3/8	1/2	4 1/2	30°	8 1/2	6	5/8	10 1/4																3.75
* 4	48	24	1 7/8	1/2	5/8	6	30°	11 1/2	8	1	14																8.0
5																											

STANDARD SIGN
W16-7

WISCONSIN DEPT OF TRANSPORTATION

APPROVED *Matthew R. Rauch*
for State Traffic Engineer

DATE 1/9/2024 PLATE NO. W16-7.9

7

7