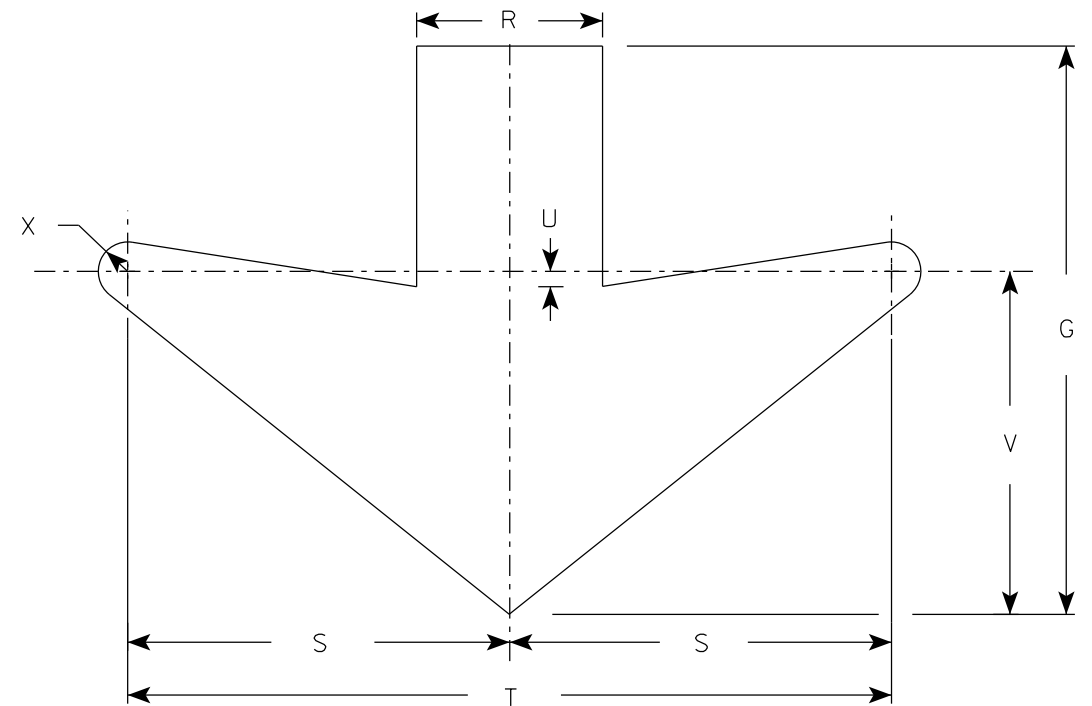


W9-63

\* See Note 6

NOTES

1. Sign is Type II - Type F Reflective except see Note 5
2. Color:  
Background -Yellow  
Message - Black non-reflective
3. Message Series - Line 1 and 2 are Series E  
Line 3 is Series D
4. Substitute appropriate numerals and optically adjust spacing to give proper balance.
5. Size 4 and 5 shall be Type I - Type F Reflective



ARROW DETAIL

SIZE	A	B	C	D	E	F	G	H	I	J	K	L	M	N	O	P	Q	R	S	T	U	V	W	X	Y	Z	Area sq. ft.
1	48	60	3	3/4	1	8	14 1/2	5	4	3 1/2	17 3/8	17 1/4	17 3/4	3 3/4	20 1/4	10 1/2		4 3/4	9 3/4	19 1/2	3/4	8 3/4	5	3/4		20.0	
2S	48	60	3	3/4	1	8	14 1/2	5	4	3 1/2	17 3/8	17 1/4	17 3/4	3 3/4	20 1/4	10 1/2		4 3/4	9 3/4	19 1/2	3/4	8 3/4	5	3/4		20.0	
2M	48	60	3	3/4	1	8	14 1/2	5	4	3 1/2	17 3/8	17 1/4	17 3/4	3 3/4	20 1/4	10 1/2		4 3/4	9 3/4	19 1/2	3/4	8 3/4	5	3/4		20.0	
3	48	60	3	3/4	1	8	14 1/2	5	4	3 1/2	17 3/8	17 1/4	17 3/4	3 3/4	20 1/4	10 1/2		4 3/4	9 3/4	19 1/2	3/4	8 3/4	5	3/4		20.0	
4	72	90	6	1	1 1/2	12	22	8	6	5	26 1/8	26 1/8	26 5/8	5 5/8	30 3/8	16		6 1/2	15	30	2	15	7	1		45.0	
5	72	90	6	1	1 1/2	12	22	8	6	5	26 1/8	26 1/8	26 5/8	5 5/8	30 3/8	16		6 1/2	15	30	2	15	7	1		45.0	

STANDARD SIGN  
W9-63

WISCONSIN DEPT OF TRANSPORTATION

APPROVED *Matthew R. Rauch*  
For State Traffic Engineer

DATE 11/13/2023 PLATE NO. W9-63.6