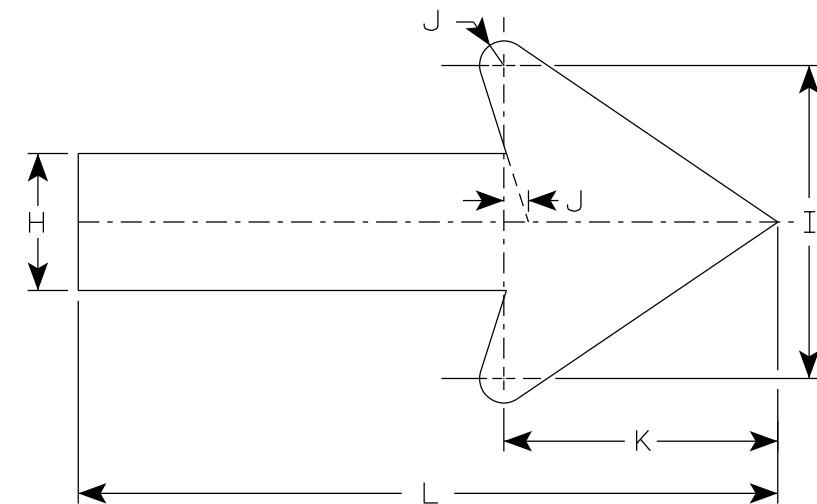


W012-1

NOTES

1. Sign is Type II - Type F Reflective
2. Color:
Background - Orange
Message - Black
3. Corners may be square or rounded when base material is plywood but borders shall be rounded as shown. When base material is metal, the corners and borders shall be rounded.



ARROW DETAIL

SIZE	A	B	C	D	E	F	G	H	I	J	K	L	M	N	O	P	Q	R	S	T	U	V	W	X	Y	Z	Area sq. ft.
1	24		1 1/2	1/2	3/8		6 5/8	3 1/2	8	5/8	7	18															4.0
2S	24		1 1/2	1/2	3/8		6 5/8	3 1/2	8	5/8	7	18															4.0
2M	24		1 1/2	1/2	3/8		6 5/8	3 1/2	8	5/8	7	18															4.0
3	30		1 7/8	5/8	1/2		8 1/4	4 3/8	10	3/4	8 3/4	22 3/8															6.25
4	36		2 1/4	3/4	5/8		10 3/8	5 1/2	12 1/2	1	11	27 7/8															9.0
5	36		2 1/4	3/4	5/8		10 3/8	5 1/2	12 1/2	1	11	27 7/8															9.0

STANDARD SIGN
W012-1

WISCONSIN DEPT OF TRANSPORTATION

APPROVED *Matthew R Rauch*
For State Traffic Engineer

DATE 2/1/2024 PLATE NO. W012-1.3

7

7