



## 2-1-1 Introduction

September 1992

Beginning with Chapter 2 and extending through Chapter 9, Bicycle Facilities, the TEOpS entry heading and numbering system will follow the corresponding system in the [MUTCD](#). The SECTION designation will be numerical instead of alphabetic as in the [MUTCD](#) partly in order to differentiate between the two.

## 2-1-3 Standardization

December 2005

Although the Department exercises no control over the usage of non-conforming signs on other systems, except on sections being built under state contracts, the Department can and *should* be looked to for direction in preserving the uniformity of all traffic control devices. Signs are of special concern because they can be designed in almost endless variation.

[Part 1](#) of the [MUTCD](#) gives specific positive purposes for the use of standardized traffic control devices. If these were closely followed by all agencies there would be no need for further discussion. Unfortunately, there are some who believe that non-uniform signs are more effective, generally because of their uniqueness. The following discussion is intended to counter this attitude and service as a resource in replying on the subject of uniformity or objecting to the use of non-conforming signs.

While it *should* be quite clear as to the purposes of signing for the benefit of the motoring public, there are other purposes for signing which *may* be installed on streets and highways, some of which have no benefit to motorists at all. These side purposes *may* include efforts to:

- Attract
- Notify, inform
- Advertise
- Educate
- Influence
- Propagandize
- Memorialize
- Placate
- Landmark
- Reinforce

The consequences of displaying non-conforming signs would be expected to mainly affect the motorist, but sometimes *may* affect others, such as pedestrians. These consequences *may* include:

- Misinterpretation
- Incorrect message
- Message contrary to law
- Distracting from driving task
- Distracting from important signs
- Incomprehensive message
- Generation of humor rather than seriousness
- False trust by others (pedestrians)
- Wasted money
- Bad precedent
- Loss of respect
- Poor materials (deterioration)
- Poor aesthetics
- Liability

### EXAMPLES

Some specific examples follow which are intended to explain why the usage is undesirable.

#### *Slow Children*

The use of this sign is probably the most common non-standard to be found on local streets. It is typically a black on yellow rectangular sign, with a running child figure. A variation *may* add the phrase "at play." It is often shown in sign catalogs.

The purpose of this sign is largely to placate the residents. While their concern for the safety of their children is understandable, the real issue is not being addressed, which the hazard is caused by children either playing in the street or entering the street without exercising care. Both actions are illegal. The sign therefore tends to endorse illegal actions, and that is why it *should* not be used.

#### *Motorist Stop/Yield to Pedestrians*

This sign is commonly a red and white rectangle, but could have several variations. It is usually erected at the crosswalk. A variation seen in other states refers to children and is probably used at crossings of neighborhood school routes. The departure from shape, color and message tends to diminish the impact of conforming signing. It *should* be expected that the public is slightly confused as to what is expected at these “special” places. The most serious reason why they *should* not be used would be if the pedestrians themselves observed the signs and reacted differently, thereby not exercising their normal caution. In Wisconsin, pedestrians have the right of way only if they do not cause the motorist to have difficulty in stopping.

#### *Black Spot*

This sign is used in foreign countries and perhaps in this country to indicate the scene of one or more fatal accidents. It is intended to warn motorists of a perceived dangerous location as well as to memorialize the location. In Wisconsin crosses have been erected by private persons to do the same thing. The negative aspects of this activity are the possibility that motorists will be distracted, that the location is only randomly the scene of a fatality, that the sign itself *may* be an obstruction to sight or otherwise an obstacle; that the sign is not informative as to what the hazard might be if there was one; and the prospect that the memorial will be unpleasant to local people if the victim was local.

#### *Directional Signs to Generators*

In a recent contract funded with federal aid, provisions were made to install directional signs on a downtown street. The design of the signs was non-conforming regarding the [MUTCD Sections 1A.02 and 2D.02 through 2D.08](#). The signs had two-color backgrounds, had arrows set in circles, which were black and white and raised above the sign surface and extended out beyond the edge of the sign, and had letter fonts and sized which would have made the signs illegible to the motoring public. The signs were removed from the project.

This was admittedly an extreme case of non-conformance. However, it is our obligation to advise that there are definite standards on all features of guide signs. To the extent that signs depart from any of these standards, the motoring public is not served, but rather some other interest is being addressed, some of which are listed above, along with the consequences.

## **2-1-7 Dynamic Speed Display Signs**

**December 2022**

### **PURPOSE**

The MUTCD section [2A.07](#) allows usage of Dynamic Speed Display Signs to measure and display individual speeds at a specific location. These signs are commonly referred to as “speed display signs,” “driver feedback signs” or “your speed is” signs. The signs are activated by radar to detect and display individual vehicle speeds to the vehicle driver. The expectation is that the driver will compare his speed with the legal posted speed and adjust accordingly. These sign installations may be portable installations that are installed on a temporary basis or may be permanent installations attached to new or existing signing. Local units of government have requested to install this signing. This policy provides guidance on the usage of these signs on state-maintained roadways.

### **DEFINITIONS**

Freeways are defined as divided highways with fully controlled access at interchanges only. Interstate Highways are freeways with the interstate route designation.

Expressways are defined as divided highways with partially controlled access by a combination of interchanges, at-grade intersections and driveways.

Conventional Highways are defined as streets or roads other than freeways or expressways. They may be divided or undivided, two-lane or multi-lane, and access is available at intersections and driveways.

### **POLICY**

Requests to install and maintain dynamic speed display signs on DOT-maintained roadways **shall** be made in writing by a local unit of government. Each request **shall** include a map showing the proposed location of the dynamic speed display sign(s). Upon Region review, approval or denial **shall** be made by a letter to the local

unit of government. If approval is granted, the letter **shall** confirm that all provisions of this policy are met by the request. If approval is given, the Region *should* also provide a copy of the R2-1C standard sign plate with the approval letter so consistency is maintained in the design and manufacture of the signs.

### QUALIFYING CRITERIA

The following criteria **shall** be used by the Region to determine whether a roadway would qualify for dynamic speed display signs.

1. Dynamic Speed Display Signs *may* be allowed in the following locations on the state highway system:
  - a. School Speed Limit Zones
  - b. Reductions in Speed Zones within a community
  - c. Work Zone speed limit areas.
2. Portably mounted dynamic speed display signs *may* be permitted at locations where they can safely be deployed for a time not to exceed eight days.
3. Dynamic speed display signs for work zones *may* be allowed for the duration of the project. The decision to utilize dynamic speed display signs for construction work zones is determined through the work zone transportation management plan process.
4. Except for work zone areas, dynamic speed display signs **shall not** be allowed on freeways and expressways, including ramps.
5. The usage of dynamic speed display signs is limited to one sign per approach of speed transition zones such as at city limits, school zones or speed reduction transition. Transition points from expressways to conventional highways may be permitted.
6. Dynamic Speed Display sign installations **shall** comply with all NCHRP 350 crashworthy requirements.
7. When permanent mounted dynamic speed display signs are used, they **shall** be placed next to or downstream (typically 100'-200') of the regulatory speed limit sign (R2-1) or school speed assembly sign (S4-51) sign. The signs **shall** be at the same mounting height.
8. Dynamic speed display signs that do not conform to this policy **shall** be removed. Notification to communities **shall** be made by written letter. If existing non-permitted signs are not removed, WisDOT will remove the sign(s) at the owner's expense.
9. The local unit of government **shall** be responsible for manufacture, liability, installation and maintenance costs.
10. The local unit of government **shall** affix an identification label to the back of each sign, per Wisconsin State Statute 86.19(5).
11. WisDOT reserves the right to remove or move dynamic speed display signs in the event of a speed zone change, maintenance work or improvement project. WisDOT will notify the local unit of government, in writing, of the work and all costs associated with moving or removing the dynamic message speed signs. All costs for such moves **shall** be paid by the local unit of government.
12. The size lettering used on dynamic speed display signs **shall**, at a minimum, match the adjacent speed limit sign (see R2-1C sign plate).

### USAGE CRITERIA

1. Dynamic speed display signs installed in permanent speed zones *should* operate 24 hours a day, 7 days a week.
2. Dynamic speed display signs installed on a temporary speed zone *should* operate for the time that the speed zone is in effect (e.g. school zones or work zones).
3. For work zones, the dynamic speed display signs *should not* be overused.

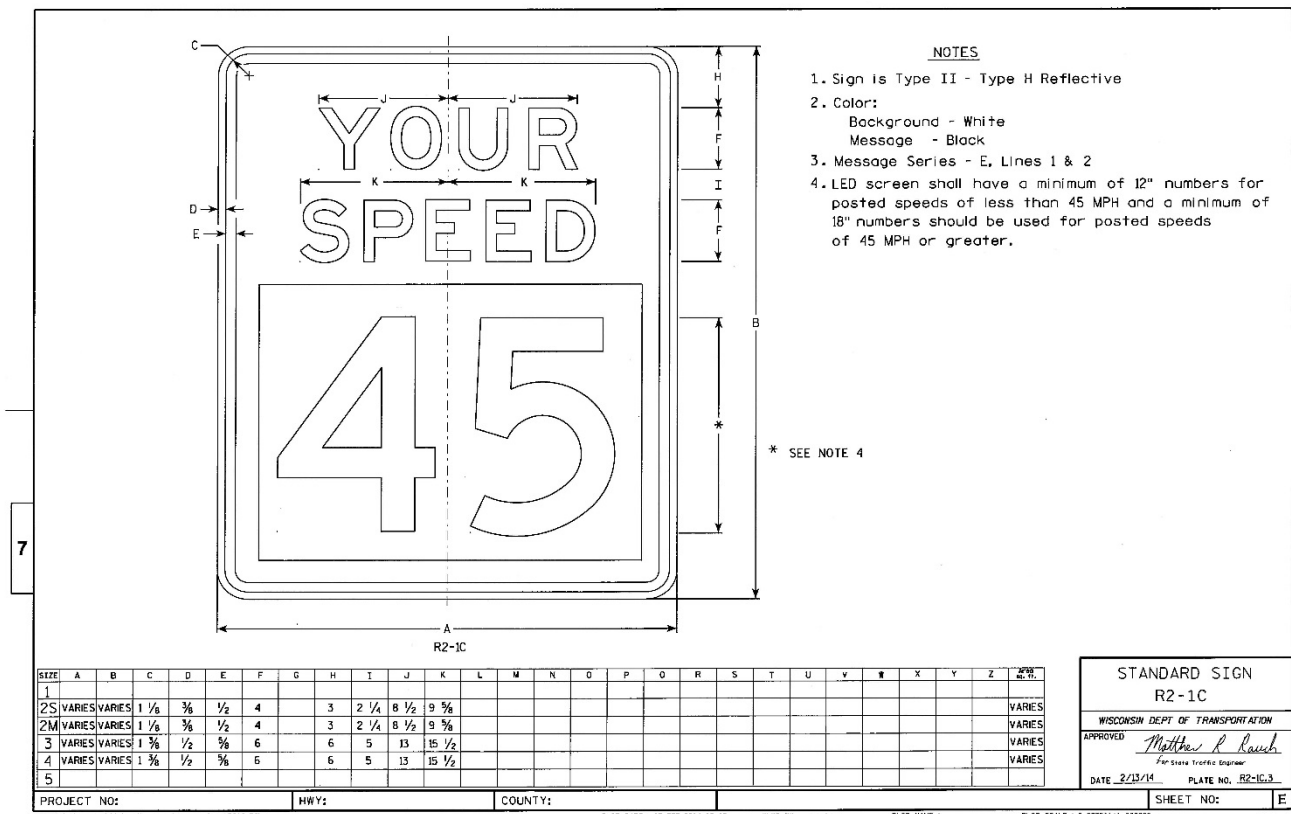
### SIGN DESIGN CRITERIA

1. The R2-1C sign (See Figure 1) **shall** be used for permanent applications.
2. The changeable portion of the dynamic speed display sign **shall** have a black background with an amber (yellow) legend. On devices equipped with flip discs, the legend color *may* be yellow or green. Only one sign, in each direction of a two-way street approach or back-to-back signs, will be allowed for

each crosswalk approach.

3. The changeable message portion of the sign **shall** display the speed of the approaching vehicle as "XX" in miles per hour. The following standards apply to the changeable message portion of the sign:
  - a. The sign **shall** flash at drivers traveling over the posted speed limit.
  - b. The flash rate *should* be between 50 and 60 cycles per minute.
  - c. Threshold speed setting *should* be set at 20mp below and above the posted speed.
  - d. For speeds measured over the speed threshold setting, the dynamic speed display sign **shall** go blank.
  - e. The dynamic speed display sign **shall** be either blank or display zeros when no vehicles are present.

**Figure 1. Dynamic Speed Display Sign R2-1C**



**2-1-8 LEDs (Blinker Signs)**

**July 2018**

**PURPOSE**

The MUTCD section [2A.07](#) provides standards and options for the usage of Light Emitting Diode (LED) units within the face of a sign and in the border of a sign to improve conspicuity and increase the legibility of sign legends and borders. This policy provides requirements and guidance on the proper use of the LED (commonly referred to as blinker) signs on state-maintained highways. Per the [MUTCD](#), these blinker signs *may* be used on STOP signs, Warning signs and other regulatory signs such as speed limit sign or school signs. This policy provides guidance and requirements for usage on state-maintained highways. Refer to [TEOps 4-5-1](#) for warning sign flasher enhancement device options for pedestrians.

**BACKGROUND**

The [MUTCD](#) includes language in [2A.07](#) which provides guidelines for the proper use of these devices. They are considered similar to flashing beacons in section [4L](#) of the [MUTCD](#). The limiting guidelines under which they are considered in the Wisconsin Supplement are:

- Guideline 1: Demonstrated crash problem
- Guideline 2: Visibility restrictions

- Guideline 3: Unusual geometrics
- Guideline 4: Poor conspicuity—sign blending in with the environment

These four guidelines apply to all public highways and streets, including those not under state jurisdiction. The policy statements below pertain specifically to state-maintained highways.

#### DEFINITIONS AND MUTCD REQUIREMENTS (IF LEDS USED)

1. LEDs **shall** have a maximum diameter of ¼ inch and **shall** be the following colors based on the type of sign:
  - a. White or red, if used with STOP or YIELD signs.
  - b. White, if used with regulatory signs other than STOP or YIELD signs.
  - c. White or yellow, if used with warning signs.
2. If flashed, the LED units **shall** flash simultaneously at a rate of more than 50 and less than 60 times per minute.
3. The uniformity of the sign design **shall** be maintained without any decrease in visibility, legibility, or driver comprehension during either daytime or nighttime conditions.
4. A module of multiple LED units used as a closely-spaced, single light source **shall** only be used within the sign face for legends or symbols.

#### POLICY

The usage of any illumination methods for traffic signs, including LEDs, is strictly limited to situations with documented safety concerns.

1. Local authorities **shall not** be allowed to installed units on state-maintained highways.
2. Blinker signs **shall** only be considered at existing locations. A conversion from a two to four-way stop is also considered an existing location. New locations **shall not** be considered until a minimum of one-year crash data, volume data and other traffic data is available for a traffic evaluation safety **shall** be submitted to the State Safety Engineer for review.
3. For blinker STOP and STOP AHEAD signs, at a minimum, consider at intersections that meet both of the following criteria:
  - a. Crashes due to failure to stop (i.e. running the stop sign), not failure to yield the right of way (i.e. stopping and then proceeding)
  - b. At least two documented failures (crash reports) to stop in the most recent 12-month period, or three documented failures to stop within the past five years.
4. Other countermeasures *should* be considered first, prior to installation of blinker STOP and STOP AHEAD signs, to address safety concerns such as:
  - a. Clearing vegetation
  - b. Double-marking STOP or STOP AHEAD signs
  - c. Flags on signs
  - d. Rumble strips
  - e. Increasing sign sizes
  - f. Flashing beacons
  - g. Others.
5. Side-by-side ramps are common at partial cloverleaf interchanges where entrance and exit ramps operate directly adjacent to one another at the interchange ramp terminal. Geometric design techniques to discourage wrong way maneuvers *should* be considered at side-by-side ramps. Where design constraints exist, blinker WRONG WAY signs *may* be utilized at side-by-side interchange ramps, provided there are documented wrong way movements noted by law enforcement or the Department. Blinker WRONG WAY signs **shall** not be used at locations other than side-by-side interchange ramps. WRONG WAY blinker signs shall only be used downstream of the ramp termini.
6. To maximize the effectiveness of the blinker WRONG WAY signs, vehicle actuated and time-of-day usage **shall** be considered by the Region. Some examples of time-of day usage would include:
  - a. Operation during periods when wrong way drivers are prevalent.
  - b. Operation during periods of low visibility or darkness, which may include a photocell operation.
7. Blinker signs **shall** only be used for STOP, STOP AHEAD, and WRONG WAY signs (at side-by-side

ramps). These are considered the more important of the regulatory and warning sign series. Enhancements or blinkers on warning signs are allowed on pedestrian and school crossing warning signs, refer to [TEOpS 4-5-1](#). There is the longstanding concern that overuse of the blinker signs will diminish their effectiveness.

Any requests for additional blinker sign evaluations **shall** be approved by the Bureau of Traffic Operations.

8. Blinker STOP AHEAD signs **shall** be furnished and installed by WisDOT on state highways based on the criteria noted above.
9. Do not install blinker STOP signs and STOP AHEAD signs on the same approach. If used where there is a curve or hill approaching a STOP sign, use blinker on STOP AHEAD sign rather than STOP sign.
10. Do not mix beacons and blinker signs with STOP and STOP AHEAD signs on the same approach.

A cost comparison analysis *should* be done to determine where beacons or blinker sign is more appropriate. Studies have not been performed to determine if one device is more appropriate than the other.

## 2-1-30 Sign Numbering

January 2007

[Section 86.19\(5\) Wis. Stat.](#) provides that all maintaining agencies in the state must affix a unique code number to each of their signs for identifying the owner of the sign if it *should* be found elsewhere. Whereas the vandalism sticker is prescribed by law to be applied to the face of the sign, there is no provision about sign numbers in [86.19\(5\)](#) to that effect, and therefor the number *may* be placed on the back of the sign, although it could be incorporated unobtrusively into the stenciling.

The format of the sign number *should* follow the example below for the Town of Big Flats in Adams County:

1-02

The numerals *should* be one inch in height and made of durable materials such as stencil paste on adhesive-backed vinyl film. Felt pen ink will not last. Paint applied directly to aluminum *may* come off if the aluminum is not specifically treated.

The numbers to be used are on the following pages.

### 2 ASHLAND

| Townships |             | Cities & Villages       |               |
|-----------|-------------|-------------------------|---------------|
| 02        | Agenda      | 201                     | Ashland (C)   |
| 04        | Ashland     | 106                     | Butternut (V) |
| 06        | Chippewa    | 251                     | Mellen (C)    |
| 08        | Gingles     |                         |               |
| 10        | Gordon      |                         |               |
|           |             | Unincorporated Villages |               |
| 12        | Jacobs      | 09                      | Cayuga        |
| 14        | La Pointe   | 05                      | Clam Lake     |
| 16        | Marengo     | 06                      | Glidden       |
| 18        | Morse       | 02                      | High Bridge   |
| 20        | Peeksville  | 13                      | Marengo       |
| 22        | Sanborn     | 05                      | Morse         |
| 24        | Shanagolden | 11                      | Odanah        |
| 26        | White River | 13                      | Sanborn       |

### 1 ADAMS

| Townships |              | Cities & Villages       |                |
|-----------|--------------|-------------------------|----------------|
| 02        | Adams        | 201                     | Adams (C)      |
| 04        | Big Flats    | 291                     | Friendship (V) |
| 06        | Colburn      |                         |                |
| 08        | Dell Prairie |                         |                |
|           |              | Unincorporated Villages |                |
| 10        | Easton       | 17                      | Arkdale        |
| 12        | Jackson      | 10                      | Brooks         |
| 14        | Leola        | 17                      | Dellwood       |
| 16        | Lincoln      | 10                      | Grand Marsh    |
| 18        | Monroe       | 15                      | New Rome       |
| 20        | New Chester  | 04                      | Plainville     |
| 22        | New Haven    | 05                      | White Creek    |
| 24        | Preston      |                         |                |

|    |                 |
|----|-----------------|
| 26 | Quincy          |
| 28 | Richfield       |
| 30 | Rome            |
| 32 | Springville     |
| 34 | Strongs Prairie |

### 3 BARRON

| Townships |              | Cities & Villages       |                  |
|-----------|--------------|-------------------------|------------------|
| 02        | Almena       | 101                     | Almena (V)       |
| 04        | Arland       | 206                     | Barron (C)       |
| 06        | Barron       | 111                     | Cameron (V)      |
| 08        | Bear Lake    | 211                     | Chetek (C)       |
| 10        | Cedar Lake   | 212                     | Cumberland (C)   |
| 12        | Chetek       | 116                     | Dallas (V)       |
| 14        | Clinton      | 136                     | Haugen (V)       |
| 16        | Crystal Lake | 171                     | Prairie Farm (V) |
| 18        | Cumberland   | 276                     | Rice Lake (C)    |
| 20        | Dallas       | 186                     | Turtle Lake (V)  |
| 22        | Dovre        | 151                     | New Auburn (V)   |
| 24        | Doyle        |                         | Also in Chippewa |
| 26        | Lakeland     |                         |                  |
| 28        | Maple Grove  |                         |                  |
|           |              | Unincorporated Villages |                  |
| 30        | Maple Plain  | 05                      | Angus            |
| 32        | Oak Grove    | 13                      | Barronett        |
| 34        | Prairie Farm | 16                      | Brill            |
| 36        | Prairie Lake | 19                      | Campia           |
| 38        | Rice Lake    | 23                      | Canton           |
| 40        | Sioux Creek  | 08                      | Comstock         |
| 42        | Stanford     | 14                      | Hillsdale        |
| 44        | Stanley      | 23                      | Lehigh           |

46 Sumner 05 Mikana  
 48 Turtle Lake 07 Poskin  
 50 Vance Creek

**4 BAYFIELD**

| Townships |            | Cities & Villages              |              |
|-----------|------------|--------------------------------|--------------|
| 02        | Barksdale  | 206                            | Bayfield (C) |
| 04        | Barnes     | 201                            | Ashland (C)  |
| 06        | Bayfield   | 151                            | Mason (V)    |
| 08        | Bay View   | 291                            | Washburn (C) |
| 10        | Bell       |                                |              |
| 12        | Cable      | <u>Unincorporated Villages</u> |              |
| 14        | Clover     | 07                             | Barkpoint    |
| 16        | Delta      | 14                             | Benoit       |
| 18        | Drummond   | 02                             | Bingo        |
| 20        | Eileen     | 05                             | Cornucopia   |
| 21        | Hughes     | 08                             | Delta        |
| 22        | Iron River | 02                             | Fresh Air    |
| 24        | Kelly      | 22                             | Grandview    |
| 26        | Keystone   | 07                             | Herbster     |
| 28        | Lincoln    | 20                             | Moquah       |
| 30        | Mason      |                                |              |
| 32        | Namekegon  |                                |              |
| 34        | Orients    |                                |              |
| 36        | Oulu       |                                |              |
| 38        | Piben      |                                |              |
| 40        | Port Wing  |                                |              |
| 42        | Grandview  |                                |              |
| 46        | Russell    |                                |              |
| 48        | Tripp      |                                |              |
| 50        | Washburn   |                                |              |

**5 BROWN**

| Townships |             | Cities & Villages              |                 |
|-----------|-------------|--------------------------------|-----------------|
| 10        | Eaton       | 102                            | Allouez (V)     |
| 12        | Glenmore    | 104                            | Ashwaubenon (V) |
| 14        | Green Bay   | 106                            | Bellevue (V)    |
| 18        | Holland     | 126                            | Hobart (V)      |
| 22        | Humboldt    | 116                            | Denmark (V)     |
| 24        | Lawrence    | 216                            | De Pere (C)     |
| 25        | Ledgeview   | 231                            | Green Bay (C)   |
| 26        | Morrison    | 136                            | Howard (V)      |
| 28        | New Denmark | 171                            | Pulaski (V)     |
| 30        | Pittsfield  | 178                            | Suamico (V)     |
| 34        | Rockland    | 191                            | Wrightstown (V) |
| 36        | Scott       |                                |                 |
| 40        | Wrightstown | <u>Unincorporated Villages</u> |                 |
|           |             | 15                             | Anston          |
|           |             | 19                             | Big Suamico     |
|           |             | 20                             | Greenleaf       |
|           |             | 12                             | Little Rapids   |
|           |             | 11                             | New Franken     |
|           |             | 13                             | Wayside         |
|           |             | 20                             | W. Wrightstown  |

**6 BUFFALO WSP-6**

| Townships |           | Cities & Villages |                   |
|-----------|-----------|-------------------|-------------------|
| 02        | Alma      | 201               | Alma (C)          |
| 04        | Belvidere | 206               | Buffalo (C)       |
| 06        | Buffalo   | 111               | Cochrane (V)      |
| 08        | Canton    | 226               | Fountain City (C) |
| 10        | Cross     | 251               | Mondovi (C)       |
| 12        | Dover     | 154               | Nelson (V)        |
| 14        | Gilmanton |                   |                   |
| 16        | Glencoe   |                   |                   |
| 18        | Lincoln   |                   |                   |
| 20        | Maxville  |                   |                   |

22 Milton  
 24 Modena  
 26 Mondovi  
 28 Montana  
 30 Naples  
 32 Nelson  
 34 Waumandee

**7 BURNETT**

| Townships |                | Cities & Villages              |                |
|-----------|----------------|--------------------------------|----------------|
| 02        | Anderson       | 131                            | Grantsburg (V) |
| 04        | Blaine         | 181                            | Siren (V)      |
| 06        | Daniels        | 191                            | Webster (V)    |
| 08        | Dewey          |                                |                |
| 10        | Grantsburg     | <u>Unincorporated Villages</u> |                |
| 12        | Jackson        | 16                             | Danbury        |
| 14        | La Follette    | 14                             | Ferron Park    |
| 16        | Lincoln        | 12                             | Gaslyn         |
| 18        | Meenon         | 07                             | Hertel         |
| 20        | Oakland        | 01                             | Randall        |
| 22        | Roosevelt      | 10                             | Yellowlake     |
| 24        | Rusk           |                                |                |
| 26        | Sand Lake      |                                |                |
| 28        | Scott          |                                |                |
| 30        | Siren          |                                |                |
| 32        | Swiss          |                                |                |
| 34        | Trade Lake     |                                |                |
| 36        | Union          |                                |                |
| 38        | Webb Lake      |                                |                |
| 40        | West Marshland |                                |                |
| 42        | Wood River     |                                |                |

**8 CALUMET**

| Townships |              | Cities & Villages              |                  |
|-----------|--------------|--------------------------------|------------------|
| 02        | Brillion     | 206                            | Brillion (C)     |
| 04        | Brothertown  | 211                            | Chilton (C)      |
| 06        | Charlestown  | 136                            | Hilbert (V)      |
| 08        | Chilton      | 261                            | New Holstein (C) |
| 10        | Harrison     | 179                            | Sherwood (V)     |
| 12        | New Holstein | 181                            | Stockbridge (V)  |
| 14        | Rantoul      | 201                            | Appleton (C)     |
| 16        | Stockbridge  | 160                            | Potter           |
| 18        | Woodville    | 241                            | Kiel             |
|           |              | 251                            | Menasha          |
|           |              | <u>Unincorporated Villages</u> |                  |
|           |              | 05                             | Darboy           |
|           |              | 09                             | Dundas           |
|           |              | 01                             | Forest Junction  |
|           |              | 03                             | Hayton           |
|           |              | 05                             | Highcliff        |

**9 CHIPPEWA**

| Townships |              | Cities & Villages              |                    |
|-----------|--------------|--------------------------------|--------------------|
| 02        | Anson        | 206                            | Bloomer (C)        |
| 04        | Arthur       | 106                            | Boyd (V)           |
| 06        | Auburn       | 111                            | Cadott (V)         |
| 08        | Birch Creek  | 211                            | Chippewa Falls (C) |
| 10        | Bloomer      | 213                            | Cornell (C)        |
| 12        | Cleveland    | 161                            | New Auburn (V)     |
| 14        | Colburn      |                                | also in Barron Co. |
| 16        | Cooks Valley | 281                            | Stanley (C)        |
| 18        | Delmar       | 128                            | Lake Hallie (V)    |
| 20        | Eagle Point  |                                |                    |
| 22        | Edson        | <u>Unincorporated Villages</u> |                    |
| 24        | Estella      | 16                             | Albertville        |
| 26        | Goetz        | 18                             | Arnold             |

|    |               |    |           |
|----|---------------|----|-----------|
| 28 | Hallie        | 02 | Cobban    |
| 32 | Howard        | 10 | Eagleton  |
| 34 | Lafayette     | 01 | Jim Falls |
| 35 | Lake Holcombe |    |           |
| 36 | Ruby          |    |           |
| 38 | Sampson       |    |           |
| 40 | Sigel         |    |           |
| 42 | Tilden        |    |           |
| 44 | Wheaton       |    |           |
| 46 | Woodmohr      |    |           |

**10 CLARK**

| Townships |             | Cities & Villages              |                 |
|-----------|-------------|--------------------------------|-----------------|
| 02        | Beaver      | 201                            | Abbotsford (C)  |
| 04        | Butler      | 211                            | Colby (C)       |
| 06        | Colby       | 111                            | Curtiss (V)     |
| 08        | Dewhurst    | 116                            | Dorchester (V)  |
| 10        | Eaton       | 131                            | Granton (V)     |
| 12        | Foster      | 231                            | Greenwood (C)   |
| 14        | Fremont     | 246                            | Loyal (C)       |
| 16        | Grant       | 261                            | Neillsville (C) |
| 18        | Green Grove | 265                            | Owen (C)        |
| 20        | Hendren     | 286                            | Thorp (C)       |
| 22        | Hewett      | 191                            | Withee (V)      |
| 24        | Hixon       | 186                            | Unity (V)       |
| 26        | Hoard       |                                |                 |
| 28        | Levis       | <u>Unincorporated Villages</u> |                 |
| 30        | Loyal       | 07                             | Chili           |
| 32        | Longwood    | 20                             | Humbird         |
| 3         | Lynn        | 27                             | Riplinger       |
| 36        | Mayville    | 23                             | Tioga           |
| 38        | Mead        | 10                             | Willard         |
| 40        | Mentor      |                                |                 |
| 42        | Pine Valley |                                |                 |
| 44        | Reseberg    |                                |                 |
| 46        | Seif        |                                |                 |
| 48        | Sherman     |                                |                 |
| 50        | Sherwood    |                                |                 |
| 52        | Thorp       |                                |                 |
| 54        | Unity       |                                |                 |
| 56        | Warner      |                                |                 |
| 58        | Washburn    |                                |                 |
| 60        | Weston      |                                |                 |
| 62        | Withee      |                                |                 |
| 64        | Worden      |                                |                 |
| 66        | York        |                                |                 |

**11 COLUMBIA**

| Townships |                  | Cities & Villages              |                     |
|-----------|------------------|--------------------------------|---------------------|
| 02        | Arlington        | 101                            | Arlington (V)       |
| 04        | Caledonia        | 111                            | Cambria (V)         |
| 06        | Columbus         | 211                            | Columbus (C)        |
| 08        | Courtland        | 116                            | Doylestown (V)      |
| 10        | Dekorra          | 126                            | Fall River (V)      |
| 12        | Ft. Winnebago    | 127                            | Friesland (V)       |
| 14        | Fountain Prairie | 246                            | Lodi (C)            |
| 16        | Hampden          | 171                            | Pardeeville (V)     |
| 18        | Leeds            | 271                            | Portage (C)         |
| 20        | Lewiston         | 172                            | Poynette (V)        |
| 22        | Lodi             | 176                            | Randolph (V)        |
| 24        | Lowville         | 177                            | Rio (V)             |
| 26        | Marcellon        | 291                            | Wisconsin Dells (C) |
| 28        | Newport          | 191                            | Wyocena (V)         |
| 30        | Otsego           |                                |                     |
| 32        | Pacific          | <u>Unincorporated Villages</u> |                     |
| 34        | Randolph         | 119                            | Okee                |
| 36        | Scott            |                                |                     |

|    |             |
|----|-------------|
| 38 | Springville |
| 40 | West Point  |
| 42 | Wyocena     |

**12 CRAWFORD**

| Townships |                  | Cities & Villages              |                      |
|-----------|------------------|--------------------------------|----------------------|
| 02        | Bridgeport       | 106                            | Bell Center          |
| 04        | Clayton          | 116                            | De Soto (V)          |
| 06        | Eastman          | 121                            | Eastman (V)          |
| 08        | Freeman          | 126                            | Ferryville (V)       |
| 10        | Haney            | 131                            | Gays Mills (V)       |
| 12        | Marietta         | 146                            | Lynxville (V)        |
| 14        | Prairie du Chien | 151                            | Mt. Sterling (V)     |
| 16        | Scott            | 271                            | Prairie du Chien (C) |
| 18        | Seneca           | 181                            | Soldiers Grove (V)   |
| 20        | Utica            | 182                            | Steuben (V)          |
| 22        | Wauzeka          | 191                            | Wauzeka (V)          |
|           |                  | <u>Unincorporated Villages</u> |                      |
|           |                  | 05                             | Barnum               |
|           |                  | 05                             | Petersburg           |

**13 DANE**

| Townships |                  | Cities & Villages              |                     |
|-----------|------------------|--------------------------------|---------------------|
| 02        | Albion           | 106                            | Belleville (V)      |
| 04        | Berry            | 107                            | Black Earth (V)     |
| 06        | Black Earth      | 108                            | Blue Mounds (V)     |
|           |                  | 109                            | Brooklyn (V)        |
| 08        | Blooming Grove   | 111                            | Cambridge (V)       |
| 10        | Blue Mounds      | 112                            | Cottage Grove (V)   |
| 12        | Bristol          | 113                            | Cross Plains (V)    |
| 14        | Burke            | 116                            | Dane (V)            |
| 16        | Christiana       | 117                            | Deerfield (V)       |
| 18        | Cottage Grove    | 118                            | De Forest (V)       |
| 20        | Cross Plains     | 221                            | Edgerton (V)        |
| 22        | Dane             | 251                            | Madison (C)         |
| 24        | Deerfield        | 151                            | Maple Bluff (V)     |
| 26        | Dunkirk          | 154                            | McFarland (V)       |
| 28        | Dunn             | 152                            | Marshall (V)        |
| 32        | Madison          | 153                            | Mazomanie (V)       |
| 34        | Mazomanie        | 255                            | Middleton (C)       |
| 36        | Medina           | 258                            | Monona (C)          |
| 38        | Middleton        | 157                            | Mt. Horeb (V)       |
| 40        | Montrose         | 165                            | Oregon (V)          |
| 42        | Oregon           | 176                            | Rockdale (V)        |
| 44        | Perry            | 181                            | Shorewood Hills (V) |
| 46        | Pleasant Springs | 281                            | Stoughton (C)       |
| 48        | Primrose         | 282                            | Sun Prairie (C)     |
| 50        | Roxbury          | 286                            | Verona (C)          |
| 52        | Rutland          | 191                            | Waunakee (V)        |
| 54        | Springdale       |                                |                     |
| 56        | Springfield      | <u>Unincorporated Villages</u> |                     |
| 58        | Sun Prairie      | 20                             | Basco               |
| 60        | Vermont          | 27                             | Klevenville         |
| 62        | Verona           | 12                             | London              |
| 64        | Vienna           | 34                             | Morrisonville       |
| 66        | Westport         | 27                             | Mt. Vernon          |
| 68        | Windsor          | 20                             | Paoli               |
| 70        | York             | 27                             | Riley               |



**14 DODGE**

| Townships |              | Cities & Villages |                 |
|-----------|--------------|-------------------|-----------------|
| 02        | Ashippun     | 206               | Beaver Dam (C)  |
| 04        | Beaver Dam   | 106               | Brownsville (V) |
| 06        | Burnett      | 111               | Clyman (V)      |
| 08        | Calamus      | 211               | Columbus (C)    |
| 10        | Chester      | 226               | Fox Lake (C)    |
| 12        | Clyman       | 230               | Hartford (C)    |
| 14        | Elba         | 236               | Horicon (C)     |
| 16        | Emmet        | 136               | Hustisford (V)  |
| 18        | Fox Lake     | 141               | Iron Ridge (V)  |
| 20        | Herman       | 241               | Juneau (C)      |
| 22        | Hubbard      | 143               | Kekoskee (V)    |
| 24        | Hustisford   | 146               | Lomira (V)      |
| 26        | Lebanon      | 147               | Lowell (V)      |
| 28        | Le Roy       | 251               | Mayville (C)    |
| 30        | Lomira       | 161               | Neosho (V)      |
| 32        | Lowell       | 176               | Randolph (V)    |
| 34        | Oak Grove    | 177               | Reeseville (V)  |
| 36        | Portland     | 186               | Theresa (V)     |
| 38        | Rubicon      | 291               | Watertown (C)   |
| 40        | Shields      | 292               | Waupun (C)      |
| 42        | Theresa      |                   |                 |
| 44        | Trenton      |                   |                 |
| 46        | Westford     | 07                | Astico          |
| 48        | Williamstown | 05                | Atwater         |
|           |              | 15                | Knowles         |
|           |              | 21                | Marshville      |
|           |              | 17                | Minnesota Jct   |
|           |              | 20                | Richwood        |
|           |              | 17                | Rolling Prairie |
|           |              | 10                | Woodland        |

**Unincorporated Villages****15 DOOR**

| Townships |                | Cities & Villages |                          |
|-----------|----------------|-------------------|--------------------------|
| 02        | Baileys Harbor | 121               | Ephraim (V)              |
| 04        | Brussels       | 127               | Forestville (V)          |
| 06        | Clay Banks     | 181               | Sister Bay (V)           |
| 08        | Egg Harbor     | 281               | Sturgeon Bay (C)         |
| 10        | Forestville    | 118               | Egg Harbor (V)           |
| 12        | Gardner        |                   |                          |
| 14        | Gibraltar      |                   |                          |
| 16        | Jacksonport    | 14                | Detroit Harbor           |
| 18        | Liberty Grove  | 09                | Ellison Bay              |
| 20        | Nasewaupee     | 07                | Fish Creek               |
| 22        | Sevastopol     | 08                | Jacksonport-Sturgeon Bay |
| 24        | Sturgeon Bay   | 05                | Mapelwood                |
| 26        | Union          | 53                | Sawyer-Sturgeon Bay      |
| 28        | Washington     | 14                | Washington Island        |
|           |                | 04                | Carlsville               |

**16 DOUGLAS**

| Townships |               | Cities & Villages |                      |
|-----------|---------------|-------------------|----------------------|
| 02        | Amnicon       | 146               | Lake Nebagamom (V)   |
| 04        | Bennett       | 165               | Oliver (V)           |
| 06        | Brule         | 171               | Poplar (V)           |
| 08        | Cloverland    | 181               | Solon Springs (V)    |
| 10        | Dairyland     | 281               | Superior (C)         |
| 12        | Gordon        | 182               | Superior Village (V) |
| 14        | Hawthorne     |                   |                      |
| 16        | Highland      |                   |                      |
| 18        | Lakeside      | 55                | Allouez              |
| 20        | Maple         | 14                | Amnicon Lake         |
| 22        | Oakland       | 55                | Billings Park        |
| 24        | Parkland      | 10                | Blueberry            |
| 26        | Solon Springs | 55                | East End             |

**Unincorporated Villages**

|    |          |    |             |
|----|----------|----|-------------|
| 28 | Summit   | 14 | Foxboro     |
| 30 | Superior | 07 | Hines       |
| 32 | Wascott  | 55 | Itasca      |
|    |          | 05 | Dairyland   |
|    |          | 14 | Patzau      |
|    |          | 12 | South Range |
|    |          | 01 | Wentworth   |

**17 DUNN**

| Townships |              | Cities & Villages |                |
|-----------|--------------|-------------------|----------------|
| 02        | Colfax       | 106               | Boyceville (V) |
| 04        | Dunn         | 111               | Colfax (V)     |
| 06        | Eau Galle    | 116               | Downing (V)    |
| 08        | Elk Mound    | 121               | Elk Mound (V)  |
| 10        | Grant        | 141               | Knapp (V)      |
| 12        | Hay River    | 251               | Menomonie (C)  |
| 14        | Lucas        | 176               | Ridgeland (V)  |
| 16        | Menomoniee   | 191               | Wheeler (V)    |
| 18        | New Haven    |                   |                |
| 20        | Otter Creek  |                   |                |
| 22        | Peru         | 13                | Caryville      |
| 24        | Red Cedar    | 02                | Downsville     |
| 26        | Rock Creek   | 11                | Meridean       |
| 28        | Sand Creek   | 12                | Rusk           |
| 30        | Sheridan     | 13                | Rock Falls     |
| 32        | Sherman      |                   |                |
| 34        | Spring Brook |                   |                |
| 36        | Stanton      |                   |                |
| 38        | Tainter      |                   |                |
| 40        | Tiffany      |                   |                |
| 42        | Weston       |                   |                |
| 44        | Wilson       |                   |                |

**Unincorporated Villages****18 EAU CLAIRE**

| Townships |                 | Cities & Villages |                |
|-----------|-----------------|-------------------|----------------|
| 02        | Bridge Creek    | 201               | Altoona (C)    |
| 04        | Brunswick       | 202               | Augusta (C)    |
| 06        | Clear Creek     | 221               | Eau Claire (C) |
| 08        | Drammen         | 126               | Fairchild (V)  |
| 10        | Fairchild       | 127               | Fall Creek (V) |
| 12        | Lincoln         |                   |                |
| 14        | Ludington       |                   |                |
| 16        | Otter Creek     | 03                | Allen          |
| 18        | Pleasant Valley | 03                | Foster         |
| 20        | Seymour         |                   |                |
| 22        | Union           |                   |                |
| 24        | Washington      |                   |                |
| 26        | Wilson          |                   |                |

**19 FLORENCE**

| Townships |              | Unincorporated Villages |              |
|-----------|--------------|-------------------------|--------------|
| 02        | Aurora       | 05                      | Spread Eagle |
| 04        | Commonwealth |                         |              |
| 06        | Fence        |                         |              |
| 08        | Fern         |                         |              |
| 10        | Florence     |                         |              |
| 12        | Homestead    |                         |              |
| 14        | Long Lake    |                         |              |
| 16        | Tipler       |                         |              |

**20 FOND DU LAC**

| Townships |             | Cities & Villages       |                    |
|-----------|-------------|-------------------------|--------------------|
| 02        | Alto        | 106                     | Brandon (V)        |
| 04        | Ashford     | 111                     | Campbellsport (V)  |
| 06        | Auburn      | 121                     | Eden (V)           |
| 08        | Byron       | 126                     | Fair Water (V)     |
| 10        | Calumet     | 226                     | Fond du Lac (C)    |
| 12        | Eden        | 151                     | Mt. Calvary        |
| 14        | Eldorado    | 161                     | N. Fond du Lac (V) |
| 16        | Empire      | 165                     | Oakfield (V)       |
| 18        | Fond du Lac | 276                     | Ripon (C)          |
| 20        | Forest      | 176                     | Rosendale (V)      |
| 22        | Friendship  | 181                     | St. Cloud (V)      |
| 24        | Lamartine   | 142                     | Kewauskum (V)      |
| 26        | Marshfield  | 292                     | Waupun (C)         |
| 28        | Metomen     |                         |                    |
| 30        | Oakfield    |                         |                    |
| Townships |             | Unincorporated Villages |                    |
| 32        | Osceola     | 13                      | Calvary            |
| 34        | Ripon       | 04                      | Hamilton           |
| 36        | Rosendale   | 20                      | Malone             |
| 38        | Springvale  | 15                      | Oak Center         |
| 40        | Taycheedah  | 20                      | Peebles            |
| 42        | Waupun      | 04                      | S. Byron           |
|           |             | 11                      | Van Dyne           |

**21 FOREST**

| Townships |                 | Cities & Villages       |             |
|-----------|-----------------|-------------------------|-------------|
| 02        | Alvin           | 211                     | Crandon (C) |
| 04        | Argonne         |                         |             |
| Townships |                 | Unincorporated Villages |             |
| 06        | Armstrong Creek |                         |             |
| 08        | Blackwell       | 02                      | Argonne     |
| 10        | Caswell         | 14                      | Carter      |
| 12        | Crandon         | 05                      | Cavour      |
| 14        | Freedom         | 08                      | Hiles       |
| 16        | Hiles           | 11                      | Jones Spur  |
| 18        | Laona           | 11                      | Mole Lake   |
| 20        | Lincoln         | 11                      | Nashville   |
| 22        | Nashville       | 01                      | Nelma       |
| 24        | Popple River    | 13                      | Newald      |
| 26        | Ross            | 14                      | Padus       |
| 28        | Wabeno          | 10                      | Planets     |
|           |                 | 14                      | Soperton    |
|           |                 | 10                      | Keith       |

**22 GRANT**

| Townships |               | Cities & Villages       |                 |
|-----------|---------------|-------------------------|-----------------|
| 02        | Beetown       | 106                     | Bagley (V)      |
| 04        | Bloomington   | 107                     | Bloomington (V) |
| 06        | Boscobel      | 108                     | Blue River (V)  |
| 08        | Cassville     | 206                     | Boscobel (C)    |
| 10        | Castle Rock   | 111                     | Cassville (V)   |
| 12        | Clifton       | 211                     | Cuba City (C)   |
| 14        | Ellenboro     | 116                     | Dickeyville (V) |
| 16        | Fennimore     | 226                     | Fennimore (C)   |
| 18        | Glen Haven    | 136                     | Hazel Green (V) |
| 20        | Harrison      | 246                     | Lancaster (C)   |
| 22        | Hazel Green   | 147                     | Livingston (V)  |
| 24        | Hickory Grove | 151                     | Montfort (V)    |
| 26        | Jamestown     | 152                     | Mt. Hope (V)    |
| 28        | Liberty       | 153                     | Muscoda (V)     |
| 30        | Lima          | 171                     | Patch Grove (V) |
| 32        | Little Grant  | 271                     | Platteville (C) |
| 34        | Marion        | 172                     | Potosi (V)      |
| 36        | Millville     | 186                     | Tennyson (V)    |
| 38        | Mt. Hope      | 191                     | Woodman (V)     |
| 40        | Mt. Ida       |                         |                 |
| 42        | Muscoda       |                         |                 |
| Townships |               | Unincorporated Villages |                 |

|    |                 |    |            |
|----|-----------------|----|------------|
| 44 | North Lancaster | 27 | Georgetown |
| 46 | Paris           | 13 | Kieler     |
| 48 | Patch Grove     | 13 | Louisburg  |
| 50 | Platteville     | 11 | Sinsinawa  |
| 52 | Potosi          | 14 | Stitzer    |
| 54 | Smelser         | 20 | Werley     |
| 56 | South Lancaster |    |            |
| 58 | Waterloo        |    |            |
| 60 | Watterstown     |    |            |
| 62 | Wingville       |    |            |
| 64 | Woodman         |    |            |
| 66 | Wyalusing       |    |            |

**23 GREEN**

| Townships |              | Cities & Villages       |                |
|-----------|--------------|-------------------------|----------------|
| 02        | Adams        | 101                     | Albany (V)     |
| 04        | Albany       | 206                     | Brodhead (C)   |
| 06        | Brooklyn     | 106                     | Brooklyn (V)   |
| 08        | Cadiz        | 110                     | Browntown (V)  |
| 10        | Clarno       | 251                     | Monroe (C)     |
| 12        | Decatur      | 151                     | Monticello (V) |
| 14        | Exeter       | 161                     | New Glarus (V) |
| 16        | Jefferson    |                         |                |
| 18        | Jordan       |                         |                |
| Townships |              | Unincorporated Villages |                |
| 20        | Monroe       | 05                      | Clarno         |
| 22        | Mt. Pleasant | 08                      | Juda           |
| 24        | New Glarus   | 04                      | Martintown     |
| 26        | Spring Grove |                         |                |
| 28        | Sylvester    |                         |                |
| 30        | Washington   |                         |                |
| 32        | York         |                         |                |

**24 GREEN LAKE**

| Townships |            | Cities & Villages       |                |
|-----------|------------|-------------------------|----------------|
| 02        | Berlin     | 206                     | Berlin (C)     |
| 04        | Brooklyn   | 231                     | Green Lake (C) |
| 06        | Green Lake | 141                     | Kingston (V)   |
| 08        | Kingston   | 251                     | Markesan (C)   |
| 10        | Mackford   | 154                     | Marquette (V)  |
| 12        | Manchester | 271                     | Princeton (C)  |
| 14        | Marquette  |                         |                |
| 16        | Princeton  |                         |                |
| Townships |            | Unincorporated Villages |                |
| 18        | St. Marie  | 04                      | Dalton         |
| 20        | Seneca     |                         |                |

**25 IOWA**

| Townships |               | Cities & Villages       |                    |
|-----------|---------------|-------------------------|--------------------|
| 02        | Arena         | 101                     | Arena (V)          |
| 04        | Brigham       | 102                     | Avoca (V)          |
| 06        | Clyde         | 106                     | Barnevald (V)      |
| 08        | Dodgeville    | 108                     | Blanchardville (V) |
| 10        | Eden          | 111                     | Cobb (V)           |
| 12        | Highland      | 216                     | Dodgeville (C)     |
| 14        | Landen        | 136                     | Highland (V)       |
| 16        | Miiffin       | 137                     | Hollandale (V)     |
| 18        | Mineral Point | 146                     | Linden (V)         |
| 20        | Moscow        | 147                     | Livingston (V)     |
| 22        | Pulaski       |                         | Also in Grant Co.  |
| 24        | Ridgeway      | 251                     | Mineral Point (C)  |
| 26        | Waldwick      | 151                     | Montfort           |
| 28        | Wyoming       | 176                     | Rewey (V)          |
|           |               | 177                     | Ridgeway (V)       |
|           |               | 153                     | Muscoda (V)        |
|           |               |                         | Also in Grant Co.  |
| Townships |               | Unincorporated Villages |                    |
|           |               | 07                      | Edmund             |
|           |               | 13                      | Jonesdale          |

**26 IRON**

| Townships |          | Cities & Villages       |              |
|-----------|----------|-------------------------|--------------|
| 02        | Anderson | 236                     | Hurley (C)   |
| 04        | Carey    | 251                     | Montreal (C) |
| 06        | Gurney   |                         |              |
| 08        | Kimball  |                         |              |
|           |          | Unincorporated Villages |              |
| 10        | Knight   | 03                      | Cedar        |
| 12        | Mercer   | 04                      | Defer        |
| 14        | Oma      | 08                      | Gile         |
| 16        | Pence    | 05                      | Iron Belt    |
| 18        | Saxon    | 06                      | Manitowish   |
| 20        | Sherman  | 10                      | Powell       |
|           |          | 07                      | Sandrock     |
|           |          | 10                      | Springstead  |
|           |          | 01                      | Upton        |
|           |          | 07                      | Van Buskirk  |

**27 JACKSON**

| Townships |               | Cities & Villages       |                       |
|-----------|---------------|-------------------------|-----------------------|
| 02        | Adams         | 101                     | Alma Center (V)       |
| 04        | Albion        | 206                     | Black River Falls (C) |
| 06        | Alma          | 136                     | Hixton (V)            |
| 08        | Bear Bluff    | 151                     | Melrose (V)           |
| 10        | Brockway      | 152                     | Merrillan (V)         |
| 12        | City Point    | 186                     | Taylor (V)            |
| 14        | Cleveland     |                         |                       |
| 16        | Curran        |                         |                       |
|           |               | Unincorporated Villages |                       |
| 18        | Franklin      | 01                      | Disco                 |
| 20        | Garden Valley | 05                      | Pray                  |
| 22        | Garfield      | 11                      | Sechlerville          |
| 24        | Garfield      |                         |                       |
| 26        | Irving        |                         |                       |
| 28        | Knapp         |                         |                       |
| 30        | Komensky      |                         |                       |
| 32        | Manchester    |                         |                       |
| 34        | Melrose       |                         |                       |
| 36        | Millston      |                         |                       |
| 38        | North Bend    |                         |                       |
| 40        | Northfield    |                         |                       |
| 42        | Springfield   |                         |                       |

**28 JEFFERSON**

| Townships |             | Cities & Villages       |                   |
|-----------|-------------|-------------------------|-------------------|
| 02        | Aztalan     | 111                     | Cambridge (V)     |
| 04        | Cold Spring | 226                     | Ft. Atkinson (C)  |
| 06        | Concord     | 241                     | Jefferson (C)     |
| 08        | Farmington  | 141                     | Johnson Creek (V) |
| 10        | Hebron      | 146                     | Lac LaBelle (V)   |
| 12        | Ixonia      | 246                     | Lake Mills (C)    |
| 14        | Jefferson   | 171                     | Palmyra (V)       |
| 16        | Koshkonong  | 181                     | Sullivan (V)      |
| 18        | Lake Mills  | 290                     | Waterloo (C)      |
| 20        | Milford     | 291                     | Watertown (C)     |
| 22        | Oakland     | 292                     | Whitewater (C)    |
| 24        | Palmyra     |                         |                   |
| 26        | Sullivan    |                         |                   |
|           |             | Unincorporated Villages |                   |
| 28        | Sumner      | 07                      | Helenville        |
| 30        | Waterloo    | 10                      | Hubbleton         |
| 32        | Watertown   | 01                      | Jefferson Jct     |
|           |             | 13                      | Oak Hill          |
|           |             | 13                      | Rome              |

**29 JUNEAU**

| Townships |            | Cities & Villages |                  |
|-----------|------------|-------------------|------------------|
| 02        | Armenia    | 111               | Camp Douglas (V) |
| 04        | Clearfield | 221               | Elroy (C)        |

| 06 | Cutler              | 136                     | Hustler (V)         |
|----|---------------------|-------------------------|---------------------|
| 08 | Finley              | 146                     | Lyndon Station (V)  |
| 10 | Fountain            | 251                     | Mauston (C)         |
| 12 | Germantown          | 161                     | Necedah (V)         |
| 14 | Kildare             | 261                     | New Lisbon (C)      |
| 16 | Kingston            | 186                     | Union Center (V)    |
| 18 | Lemonweir           | 291                     | Wisconsin Dells (C) |
| 20 | Lindina             | 191                     | Wonewoc (V)         |
| 22 | Lisbon              |                         |                     |
| 24 | Lyndon              |                         |                     |
|    |                     | Unincorporated Villages |                     |
| 26 | Marion              | 14                      | Cloverdale          |
| 28 | Necedah             | 04                      | Finley              |
| 30 | Orange              | 08                      | Mather              |
| 32 | Plymouth            | 08                      | Meadow Valley       |
| 34 | Seven Mile<br>Creek | 14                      | Sprague             |
| 36 | Summit              |                         |                     |
| 38 | Wonewoc             |                         |                     |

**30 KENOSHA**

| Townships |                  | Cities & Villages       |                      |
|-----------|------------------|-------------------------|----------------------|
| 02        | Brighton         | 241                     | Kenosha (C)          |
| 04        | Bristol          | 131                     | Genoa City (V)       |
| 06        | Paris            | 171                     | Paddock Lake (V)     |
| 10        | Pleasant Prairie | 174                     | Pleasant Prairie (V) |
| 12        | Randall          | 181                     | Silver Lake (V)      |
| 14        | Salem            | 186                     | Twin Lakes (V)       |
| 16        | Somers           |                         |                      |
|           |                  | Unincorporated Villages |                      |
|           |                  | 05                      | Bassett              |
|           |                  | 06                      | Benet Lake           |
|           |                  | 06                      | Camp Lake            |
|           |                  | 05                      | Cross Lake           |
|           |                  | 05                      | Crow Lake            |
|           |                  | 06                      | Fox River            |
|           |                  | 08                      | New Munster          |
|           |                  | 05                      | Powers Lake          |
|           |                  | 05                      | Richmond, Ill        |
|           |                  | 08                      | Slades Corners       |
|           |                  | 06                      | Trevor               |
|           |                  | 04                      | Truesdell            |
|           |                  | 06                      | Wilmot               |
|           |                  | 02                      | Woodworth            |

**31 KEWAUNEE**

| Townships |            | Cities & Villages |               |
|-----------|------------|-------------------|---------------|
| 02        | Ahnapee    | 111               | Casco (V)     |
| 04        | Carlton    | 146               | Luxemburg (V) |
| 06        | Casco      | 201               | Algoma (C)    |
| 10        | Franklin   | 241               | Kewaunee (C)  |
| 12        | Lincoln    |                   |               |
| 14        | Luxemburg  |                   |               |
| 16        | Montpelier |                   |               |
| 18        | Pierce     |                   |               |
| 20        | Red River  |                   |               |

**32 LA CROSSE**

| Townships |            | Cities & Villages       |                |
|-----------|------------|-------------------------|----------------|
| 02        | Bangor     | 106                     | Bangor (V)     |
| 04        | Barre      | 136                     | Holmen (V)     |
| 06        | Burns      | 246                     | La Crosse (C)  |
| 08        | Campbell   | 265                     | Onalaska (C)   |
| 10        | Farmington | 176                     | Rockland (V)   |
| 12        | Greenfield | 191                     | West Salem (V) |
| 14        | Hamilton   |                         |                |
| 16        | Holland    |                         |                |
| 18        | Medary     |                         |                |
|           |            | Unincorporated Villages |                |
|           |            | 09                      | Midway         |

20 Onalaska 05 Mindoro  
 22 Shelby  
 24 Washington

**33 LAFAYETTE**

| Townships |                   | Cities & Villages              |                    |
|-----------|-------------------|--------------------------------|--------------------|
| 02        | Argyle            | 101                            | Argyle (V)         |
| 04        | Belmont           | 106                            | Belmont (V)        |
| 06        | Benton            | 107                            | Benton (V)         |
| 08        | Blanchard         | 108                            | Blanchardville (V) |
| 10        | Darlington        | 211                            | Cuba City (C)      |
| 12        | Elk Grove         | 216                            | Darlington (C)     |
| 14        | Fayette           | 131                            | Gratiot (V)        |
| 16        | Gratiot           | 281                            | Shullsburg (C)     |
| 18        | Kendall           | 181                            | South Wayne (V)    |
| 20        | Lamont            | 136                            | Hazel Green (C)    |
| 22        | Monticello        |                                |                    |
| 24        | New Diggings      | <u>Unincorporated Villages</u> |                    |
| 26        | Seymour           | 17                             | Calamine           |
| 28        | Shullsburg        | 14                             | Dunbarton          |
| 30        | Wayne             | 12                             | Leadmine           |
| 32        | White Oak Springs | 02                             | Leslie             |
| 34        | Willow Springs    | 18                             | Woodford           |
| 36        | Wiota             |                                |                    |

**34 LANGLADE**

| Townships |            | Cities & Villages              |                |
|-----------|------------|--------------------------------|----------------|
| 02        | Ackley     | 201                            | Antigo (C)     |
| 04        | Ainsworth  | 191                            | White Lake (V) |
| 06        | Antigo     |                                |                |
| 08        | Elcho      | <u>Unincorporated Villages</u> |                |
| 10        | Evergreen  | 12                             | Bryant         |
| 12        | Langlade   | 07                             | Deerbrook      |
| 14        | Neva       | 05                             | Elton          |
| 16        | Norwood    | 17                             | Hollister      |
| 18        | Parrish    | 07                             | Kempster       |
| 20        | Peck       | 06                             | Lily           |
| 22        | Polar      | 17                             | Markton        |
| 24        | Price      | 02                             | Pearson        |
| 26        | Rolling    | 08                             | Phlox          |
| 28        | Summit     | 06                             | Pickerel       |
| 30        | Upham      | 15                             | Summit Lake    |
| 32        | Vilas      |                                |                |
| 34        | Wolf River |                                |                |

**35 LINCOLN**

| Townships |            | Cities & Villages              |                |
|-----------|------------|--------------------------------|----------------|
| 02        | Birch      | 251                            | Merrill (C)    |
| 04        | Bradley    | 286                            | Tomahawk (C)   |
| 06        | Corning    |                                |                |
| 08        | Harding    | <u>Unincorporated Villages</u> |                |
| 10        | Harrison   | 10                             | 119 Bloomville |
| 12        | King       | 11                             | Doering        |
| 14        | Merrill    | 10                             | Gleason        |
| 16        | Pine River | 01                             | Irma           |
| 18        | Rock Falls | 05                             | Jeffris        |
| 20        | Russell    | 15                             | Spirit Falls   |
| 22        | Schley     | 02                             | Heafford Jct   |
| 24        | Scott      |                                |                |
| 26        | Skanawan   |                                |                |
| 28        | Somo       |                                |                |
| 30        | Tomahawk   |                                |                |
| 32        | Wilson     |                                |                |

**36 MANITOWOC**

| Townships |                  | Cities & Villages              |                   |
|-----------|------------------|--------------------------------|-------------------|
| 02        | Cato             | 112                            | Cleveland (V)     |
| 04        | Centerville      | 126                            | Francis Creek (V) |
| 06        | Cooperstown      | 241                            | Kiel (C)          |
| 08        | Eaton            | 251                            | Manitowoc (C)     |
| 10        | Franklin         | 151                            | Mishicot (V)      |
| 12        | Gibson           | 176                            | Reedsville (V)    |
| 14        | Kossuth          | 181                            | St. Nazianz (V)   |
| 16        | Liberty          | 286                            | Two Rivers (C)    |
| 18        | Manitowoc        | 186                            | Valders (V)       |
| 20        | Manitowoc Rapids | 191                            | Whitelaw (V)      |
| 22        | Maple Grove      | 147                            | Maribel (V)       |
| 24        | Meeme            | 132                            | Kellnersville (V) |
| 26        | Mishicot         |                                |                   |
| 28        | Newton           | <u>Unincorporated Villages</u> |                   |
| 30        | Rockland         | 10                             | Branch            |
| 32        | Schleswig        | 15                             | Collins           |
| 34        | Two Creeks       | 01                             | Grimms            |
| 36        | Two Rivers       | 02                             | Hika              |
|           |                  | 15                             | Quarry            |
|           |                  | 13                             | Tisch Mills       |

**37 MARATHON**

| Townships |              | Cities & Villages              |                   |
|-----------|--------------|--------------------------------|-------------------|
| 02        | Bergen       | 201                            | Abbotsford (C)    |
| 04        | Berlin       | 102                            | Athens (V)        |
| 06        | Bern         | 104                            | Birnamwood (V)    |
| 08        | Bevent       | 106                            | Brokaw (V)        |
| 10        | Frighton     | 211                            | Colby (C)         |
| 12        | Cassel       | 116                            | Dorchester (V)    |
| 14        | Cleveland    | 121                            | Edgar (V)         |
| 16        | Day          | 122                            | Elderon (V)       |
| 18        | Easton       | 126                            | Fenwood (V)       |
| 20        | Eau Pleine   | 136                            | Hatley (V)        |
| 22        | Elderon      | 145                            | Kronewetter (V)   |
| 24        | Emmett       | 151                            | Marathon City (V) |
| 26        | Frankfort    | 250                            | Marshfield (C)    |
| 28        | Franzen      | 251                            | Mosinee (C)       |
| 30        | Green Valley | 176                            | Rothschild (V)    |
| 32        | Guenther     | 281                            | Schofield (C)     |
| 34        | Halsey       | 181                            | Spencer (V)       |
| 36        | Hamburg      | 182                            | Stratford (V)     |
| 38        | Harrison     | 186                            | Unity (V)         |
| 40        | Hewitt       | 291                            | Wausau (C)        |
| 42        | Holton       | 192                            | Weston (V)        |
| 44        | Hull         |                                |                   |
| 46        | Johnson      | <u>Unincorporated Villages</u> |                   |
| 48        | Knowlton     | 23                             | Corinth           |
| 52        | Maine        | 24                             | Dancy             |
| 54        | Marathon     | 14                             | Galloway          |
| 56        | Mc Millan    | 39                             | Granite Heights   |
| 58        | Mosinee      | 23                             | Milan             |
| 60        | Norrie       | 12                             | Moon              |
| 62        | Plover       | 02                             | Naugart           |
| 64        | Reid         | 08                             | Rozellville       |
| 66        | Rib Falls    |                                |                   |
| 68        | Rib Mountain |                                |                   |
| 70        | Rietbrock    |                                |                   |
| 72        | Ringle       |                                |                   |
| 74        | Spencer      |                                |                   |
| 76        | Stettin      |                                |                   |
| 78        | Texas        |                                |                   |
| 80        | Wausau       |                                |                   |
| 82        | Weston       |                                |                   |
| 84        | Wien         |                                |                   |

**38 MARINETTE**

| Townships |              | Cities & Villages       |                |
|-----------|--------------|-------------------------|----------------|
| 02        | Amberg       | 111                     | Coleman (V)    |
| 04        | Athelstane   | 251                     | Marinette (C)  |
| 06        | Beaver       | 261                     | Niagara (V)    |
| 08        | Beecher      | 271                     | Peshtigo (C)   |
| 10        | Dunbar       | 171                     | Pound (V)      |
| 12        | Goodman      | 191                     | Wausaukee (V)  |
| 14        | Grover       | 121                     | Crivitz (V)    |
| 16        | Lake         |                         |                |
| 18        | Middle Inlet |                         |                |
|           |              | Unincorporated Villages |                |
| 20        | Niagara      | 01                      | 189 Cedarville |
| 22        | Pembine      | 02                      | Intervale      |
| 24        | Peshtigo     | 08                      | Loomis         |
| 26        | Porterfield  | 17                      | Mc Allister    |
| 28        | Pound        | 01                      | Marek          |
| 30        | Silver Cliff | 13                      | Walsh          |
| 32        | Stephenson   |                         |                |
| 34        | Wagner       |                         |                |
| 36        | Wausaukee    |                         |                |

**39 MARQUETTE**

| Townships |              | Cities & Villages       |               |
|-----------|--------------|-------------------------|---------------|
| 02        | Buffalo      | 121                     | Endeavor (V)  |
| 04        | Crystal Lake | 251                     | Montello (C)  |
| 06        | Douglas      | 161                     | Neshkoro (V)  |
| 08        | Harris       | 165                     | Oxford (V)    |
| 10        | Mecan        | 191                     | Westfield (V) |
| 12        | Montello     |                         |               |
| 14        | Moundville   |                         |               |
|           |              | Unincorporated Villages |               |
| 16        | Neshkoro     | 03                      | Briggsville   |
| 18        | Newton       | 06                      | Glen Oak      |
| 20        | Oxford       |                         |               |
| 22        | Packwaukee   |                         |               |
| 24        | Shields      |                         |               |
| 26        | Springfield  |                         |               |
| 28        | Westfield    |                         |               |

**73 MEMONONEE**

| 01                                     | Indian Reservation Township of Menomonee County of Menomonee |  |  |
|--|--|--|--|
| Unincorporated Villages w/Post Offices |  |  |  |
| 01                                     | Keshena  |  |  |
| 01                                     | Neopit   |  |  |

**40 MILWAUKEE**

| Unincorp. Villages |                 | Cities & Villages |                     |
|--------------------|-----------------|-------------------|---------------------|
| 57                 | Alois           | 106               | Bayside (V)         |
| 57                 | Bay View        | 107               | Brown Deer (V)      |
| 67                 | Carrollville    | 211               | Cudahy (C)          |
| 57                 | Granville       | 126               | Fox Point (V)       |
| 57                 | North Milwaukee | 226               | Franklin (C)        |
| 67                 | Oakwood         | 231               | Glendale (C)        |
| 68                 | Saint Martins   | 131               | Greendale (V)       |
| 56                 | Silverdale      | 236               | Greenfield (C)      |
| 57                 | Tippecanoe      | 136               | Hales Corners (V)   |
| 57                 | Wood            | 251               | Milwaukee (C)       |
|                    |                 | 265               | Oak Creek (C)       |
|                    |                 | 176               | River Hills (V)     |
|                    |                 | 281               | Saint Francis (C)   |
|                    |                 | 181               | Shorewood (V)       |
|                    |                 | 281               | South Milwaukee (C) |
|                    |                 | 291               | Wauwatosa (C)       |
|                    |                 | 292               | West Allis (C)      |
|                    |                 | 191               | West Milwaukee (V)  |
|                    |                 | 192               | Whitefish Bay (V)   |

**41 MONROE**

| Townships |              | Cities & Villages       |                 |
|-----------|--------------|-------------------------|-----------------|
| 02        | Adrian       | 111                     | Cashton (V)     |
| 04        | Angelo       | 141                     | Kendall (V)     |
| 06        | Byron        | 151                     | Melvina (V)     |
| 08        | Clifton      | 161                     | Norwalk (V)     |
| 10        | Glendale     | 165                     | Oakdale (V)     |
| 12        | Grant        | 281                     | Sparta (C)      |
| 14        | Greenfield   | 286                     | Tomah (C)       |
| 16        | Jefferson    | 191                     | Wilton (V)      |
| 18        | La Fayette   | 192                     | Wyeville (V)    |
| 20        | La Grange    | 185                     | Warrens (V)     |
| 22        | Leon         |                         |                 |
|           |              | Unincorporated Villages |                 |
| 24        | Lincoln      |                         |                 |
| 26        | Little Falls | 02                      | Camp Mc Coy     |
| 28        | New Lyme     | 13                      | Cataract        |
| 30        | Oakdale      | 03                      | Shennington     |
| 32        | Portland     | 02                      | Sparta Military |
| 34        | Ridgeville   | 07                      | Tunnel City     |
| 36        | Scott        | 03                      | Valley Jct      |
| 38        | Sheldon      |                         |                 |
| 40        | Sparta       |                         |                 |
| 42        | Tomah        |                         |                 |
| 44        | Wellington   |                         |                 |
| 46        | Wells        |                         |                 |
| 48        | Wilton       |                         |                 |

**42 OCONTO**

| Townships |                | Cities & Villages       |                  |
|-----------|----------------|-------------------------|------------------|
| 02        | Abrams         | 231                     | Gillett (C)      |
| 06        | Armstruck      | 146                     | Lena (V)         |
| 08        | Bagley         | 265                     | Oconto (C)       |
| 10        | Brazeau        | 266                     | Oconto Falls (C) |
| 12        | Breed          | 171                     | Pulaski (V)      |
| 14        | Chase          | 181                     | Suring (V)       |
| 16        | Doty           |                         |                  |
| 18        | Gillett        |                         |                  |
|           |                | Unincorporated Villages |                  |
| 19        | How            | 23                      | Lakewood         |
| 20        | Lakewood       | 08                      | 229 Mosling      |
| 22        | Lena           | 02                      | Mountain         |
| 24        | Little River   | 12                      | Sobieski         |
| 26        | Little Suamico |                         |                  |
| 28        | Maple Valley   |                         |                  |
| 29        | Morgan         |                         |                  |
| 30        | Oconto         |                         |                  |
| 32        | Oconto Falls   |                         |                  |
| 34        | Pensaukee      |                         |                  |
| 36        | Riverview      |                         |                  |
| 38        | Spruce         |                         |                  |
| 40        | Stiles         |                         |                  |
| 42        | Townsend       |                         |                  |
| 44        | Underhill      |                         |                  |

**43 ONEIDA**

| Townships |               | Cities & Villages       |                 |
|-----------|---------------|-------------------------|-----------------|
| 02        | Cassian       | 276                     | Rhineland (C)   |
| 04        | Crescent      |                         |                 |
| 06        | Enterprise    |                         |                 |
|           |               | Unincorporated Villages |                 |
| 08        | Hazelhurst    | 17                      | Clearwater Lake |
| 10        | Lake Tomahawk | 12                      | Gagen           |
| 12        | Little Rice   | 01                      | Harshaw         |
| 14        | Lynne         | 10                      | McNaughton      |
| 16        | Minocqua      | 14                      | Pelican Lake    |
| 18        | Monico        | 16                      | Robbins         |
| 20        | Newbold       | 15                      | Roosevelt       |
| 22        | Nokomis       | 15                      | Starks          |

|    |             |    |         |
|----|-------------|----|---------|
| 24 | Pelican     | 07 | Tripoli |
| 26 | Piehl       |    |         |
| 28 | Pine Lake   |    |         |
| 30 | Schoepke    |    |         |
| 32 | Stella      |    |         |
| 34 | Sugar Camp  |    |         |
| 36 | Three Lakes |    |         |
| 38 | Woodboro    |    |         |
| 40 | Woodruff    |    |         |

**44 OUTAGAMIE**

| Townships |             | Cities & Villages              |                    |
|-----------|-------------|--------------------------------|--------------------|
| 02        | Black Creek | 201                            | Appleton (C)       |
| 04        | Bovina      | 106                            | Bear Creek (V)     |
| 06        | Buchanan    | 107                            | Black Creek (V)    |
| 08        | Center      | 111                            | Combined Locks (V) |
| 10        | Cicero      | 136                            | Hortonville (V)    |
| 12        | Dale        | 137                            | Howard (V)         |
| 14        | Deer Creek  | 241                            | Kaukauna (C)       |
| 16        | Ellington   | 141                            | Kimberly (V)       |
| 18        | Freedom     | 146                            | Little Chute (V)   |
| 20        | Grand Chute | 261                            | New London (C)     |
| 22        | Grenville   | 155                            | Nichols (V)        |
| 24        | Hortonia    | 281                            | Seymour (C)        |
| 26        | Kaukauna    | 181                            | Shiocton (V)       |
| 28        | Liberty     | 191                            | Wrightstown (V)    |
| 30        | Maine       |                                |                    |
| 32        | Maple Creek | <u>Unincorporated Villages</u> |                    |
| 34        | Oneida      | 06                             | Medina             |
| 36        | Osborne     | 16                             | Sugar Bush         |
| 38        | Seymour     |                                |                    |
| 40        | Vandenbrock |                                |                    |

**45 OZAUKEE**

| Townships |                           | Cities & Villages |                    |
|-----------|---------------------------|-------------------|--------------------|
| 02        | Belgium                   | 105               | Bayside (V)        |
| 04        | Cedarburg                 | 106               | Belgium (V)        |
| 06        | Fredonia                  | 211               | Cedarburg (C)      |
| 08        | Grafton                   | 126               | Fredonia (V)       |
| 12        | Pt. Washington            | 131               | Grafton (V)        |
| 14        | Saukville                 | 255               | Mequon (C)         |
|           |                           | 271               | Pt. Washington (C) |
|           | <u>Unincorp. Villages</u> | 181               | Saukville (V)      |
| 03        | Waubeka                   | 186               | Thiensville (V)    |
|           |                           | 161               | Newburg (V)        |

**46 PEPIN**

| Townships |            | Cities & Villages              |               |
|-----------|------------|--------------------------------|---------------|
| 02        | Albany     | 216                            | Durand (C)    |
| 04        | Durand     | 171                            | Pepin (V)     |
| 06        | Frankfort  | 181                            | Stockholm (V) |
| 08        | Lima       |                                |               |
| 10        | Pepin      | <u>Unincorporated Villages</u> |               |
| 12        | Stockholm  | 07                             | Arkansas      |
| 14        | Waterville |                                |               |
| 16        | Waubeek    |                                |               |

**47 PIERCE**

| Townships |               | Cities & Villages |                   |
|-----------|---------------|-------------------|-------------------|
| 02        | Clifton       | 106               | Bay City (V)      |
| 04        | Diamond Bluff | 121               | Ellsworth (V)     |
| 06        | Ellsworth     | 122               | Elmwood (V)       |
| 08        | El Paso       | 151               | Maiden Rock (V)   |
| 10        | Gilman        | 171               | Plum City (V)     |
| 12        | Hartland      | 271               | Prescott (C)      |
| 14        | Isabelle      | 276               | River Falls (C)   |
| 16        | Maiden Rock   | 181               | Spring Valley (V) |

|    |             |                                |               |
|----|-------------|--------------------------------|---------------|
| 18 | Martell     |                                |               |
| 20 | Oak Grove   | <u>Unincorporated Villages</u> |               |
| 22 | River Falls | 16                             | Beldenville   |
| 24 | Rock Elm    | 02                             | Diamond Bluff |
| 26 | Salem       | 15                             | Hager City    |
| 28 | Spring Lake | 09                             | Martell       |
| 30 | Trenton     |                                |               |
| 32 | Trimbelle   |                                |               |
| 34 | Union       |                                |               |

**48 POLK**

| Townships |                 | Cities & Villages              |                     |
|-----------|-----------------|--------------------------------|---------------------|
| 02        | Alden           | 201                            | Amery (C)           |
| 04        | Apple River     | 106                            | Balsam Lake (V)     |
| 06        | Balsam Lake     | 111                            | Centura (C)         |
| 08        | Beaver          | 112                            | Clayton (V)         |
| 10        | Black Brook     | 113                            | Clear Lake (V)      |
| 12        | Bone Lake       | 116                            | Dresser (V)         |
| 14        | Clam Falls      | 126                            | Frederic (V)        |
| 16        | Clayton         | 146                            | Luck (V)            |
| 18        | Clear Lake      | 151                            | Milltown (V)        |
| 20        | Eureka          | 165                            | Osceola (V)         |
| 22        | Farmington      | 281                            | St. Croix Falls (C) |
| 24        | Garfield        | 168                            | Turtle Lake (V)     |
| 26        | Georgetown      | Also in Barron Co.             |                     |
| 28        | Johnstown       | <u>Unincorporated Villages</u> |                     |
| 30        | Laketown        | 14                             | Andrus              |
| 32        | Lincoln         | 23                             | Cushing             |
| 34        | Lorain          | 16                             | Deronda             |
| 36        | Luck            | 23                             | Evergreen           |
| 38        | Mc Kinley       | 08                             | Joel                |
| 40        | Milltown        | 07                             | Lewis               |
| 42        | Osceola         | 19                             | Lorain              |
| 44        | St. Croix Falls | 21                             | Nye                 |
| 46        | Sterling        | 12                             | Wanderoos           |
| 48        | West Sweden     | 10                             | Wolfcreek           |

**49 PORTAGE**

| Townships |             | Cities & Villages              |                   |
|-----------|-------------|--------------------------------|-------------------|
| 02        | Alban       | 101                            | Almond (V)        |
| 04        | Almond      | 102                            | Amherst (V)       |
| 06        | Amherst     | 103                            | Amherst Jct (V)   |
| 08        | Belmont     | 141                            | Junction City (V) |
| 10        | Buena Vista | 151                            | Milladore (V)     |
| 12        | Carson      | 161                            | Nelsonville (V)   |
| 14        | Dewey       | 171                            | Park Ridge (V)    |
| 16        | Eau Pleine  | 176                            | Rosholt (V)       |
| 18        | Grant       | 281                            | Stevens Point (C) |
| 20        | Hull        | 191                            | Whiting (V)       |
| 22        | Lanark      | 173                            | Plover (V)        |
| 24        | Linwood     |                                |                   |
| 26        | New Hope    | <u>Unincorporated Villages</u> |                   |
| 28        | Pine Grove  | 17                             | Arnott            |
| 30        | Plover      | 14                             | Bancroft          |
| 32        | Sharon      | 05                             | Coddington        |
| 34        | Stockton    | 17                             | Custer            |
|           |             | 16                             | Polonia           |

**50 PRICE**

| Townships |            | Cities & Villages              |                |
|-----------|------------|--------------------------------|----------------|
| 02        | Catawba    | 111                            | Catawba (V)    |
| 04        | Eisenstein | 141                            | Kennan (V)     |
| 06        | Elk        | 271                            | Park Falls (C) |
| 08        | Emery      | 272                            | Phillips (C)   |
| 10        | Fifield    | 171                            | Prentice (V)   |
| 12        | Flambeau   |                                |                |
| 14        | Georgetown | <u>Unincorporated Villages</u> |                |

|    |           |    |            |
|----|-----------|----|------------|
| 16 | Hackett   | 12 | Brantwood  |
| 18 | Harmony   | 04 | Dover      |
| 20 | Hill      | 13 | Kaiser     |
| 22 | Kennan    | 13 | Kennedy    |
| 24 | Knox      | 06 | Lugerville |
| 26 | Lake      |    |            |
| 28 | Ogema     |    |            |
| 30 | Prentice  |    |            |
| 32 | Spirit    |    |            |
| 34 | Worcester |    |            |

**51 RACINE**

| Townships          |              | Cities & Villages |                  |
|--------------------|--------------|-------------------|------------------|
| 02                 | Burlington   | 206               | Burlington (C)   |
| 04                 | Caledonia    | 104               | Caledonia (V)    |
| 06                 | Dover        | 121               | Elmwood Park (V) |
| 08                 | Mt. Pleasant | 151               | Mt Pleasant (V)  |
| 10                 | Norway       | 161               | North Bay (V)    |
| 12                 | Raymond      | 276               | Racine (C)       |
| 14                 | Rochester    | 176               | Rochester (V)    |
| 16                 | Waterford    | 181               | Sturtevant (V)   |
| 18                 | Yorkville    | 186               | Union Grove (V)  |
|                    |              | 191               | Waterford (V)    |
|                    |              | 192               | Wind Point (V)   |
| Unincorp. Villages |              |                   |                  |
| 02                 | Franksville  |                   |                  |
| 03                 | Kansasville  |                   |                  |
| 05                 | Wind Lake    |                   |                  |

**52 RICHLAND**

| Townships |             | Cities & Villages       |                     |
|-----------|-------------|-------------------------|---------------------|
| 02        | Akan        | 106                     | Boaz (V)            |
| 04        | Bloom       | 11                      | Cazenovia (V)       |
| 06        | Buena Vista | 146                     | Lone Rock (V)       |
| 08        | Dayton      | 276                     | Richland Center (C) |
| 10        | Eagle       | 186                     | Viola (V)           |
| 12        | Forest      | 196                     | Yuba (V)            |
| 14        | Henrietta   |                         |                     |
| 16        | Ithaca      | Unincorporated Villages |                     |
| 18        | Marshall    | 02                      | Bloom City          |
| 20        | Orion       | 12                      | Excelsior           |
| 22        | Richland    | 09                      | Gillingham          |
| 24        | Richwood    | 03                      | Gotham              |
| 26        | Rockbridge  | 03                      | Sextonville         |
| 28        | Sylvan      | 12                      | Tavera              |
| 30        | Westford    | 10                      | Twin Bluffs         |
| 32        | Willow      | 02                      | West Lima           |

**53 ROCK**

| Townships |               | Cities & Villages       |                 |
|-----------|---------------|-------------------------|-----------------|
| 02        | Avon          | 206                     | Beloit (C)      |
| 04        | Beloit        | 210                     | Brodhead (C)    |
| 06        | Bradford      | 111                     | Clinton (V)     |
| 08        | Center        | 221                     | Edgerton (C)    |
| 10        | Clinton       | 222                     | Evansville (C)  |
| 12        | Fulton        | 126                     | Footville (V)   |
| 14        | Harmony       | 241                     | Janesville (C)  |
| 16        | Janesville    | 257                     | Milton (V)      |
| 18        | Johnstown     | 165                     | Orfordville (V) |
| 20        | La Prairie    |                         |                 |
| 22        | Lima          | Unincorporated Villages |                 |
| 24        | Magnolia      | 17                      | Afton           |
| 26        | Milton        | 03                      | Avalon          |
| 28        | Newark        | 15                      | Hanover         |
| 30        | Plymouth      | 11                      | Lima Center     |
| 32        | Porter        | 19                      | Shopiere        |
| 34        | Rock          | 19                      | Tiffany         |
| 36        | Spring Valley | 03                      | Emerald Grove   |

|    |        |    |           |
|----|--------|----|-----------|
| 38 | Turtle | 12 | Cainville |
| 40 | Union  |    |           |

**54 RUSK**

| Townships |              | Cities & Villages       |                 |
|-----------|--------------|-------------------------|-----------------|
| 02        | Atlanta      | 106                     | Bruce (V)       |
| 04        | Big Bend     | 111                     | Conrath (V)     |
| 06        | Big Falls    | 131                     | Glen Flora (V)  |
| 08        | Cedar Rapids | 136                     | Hawkins (V)     |
| 10        | Dewey        | 141                     | Ingram (V)      |
| 12        | Flambeau     | 246                     | Ladysmith (C)   |
| 14        | Grant        | 181                     | Sheldon (V)     |
| 16        | Grow         | 186                     | Tony (V)        |
| 18        | Hawkins      | 191                     | Weyerhaeuer (V) |
| 20        | Hubbard      |                         |                 |
| 22        | Lawrence     | Unincorporated Villages |                 |
| 24        | Marshall     | 02                      | Apollonia       |
| 26        | Murry        | 10                      | Crane           |
| 28        | Richland     | 17                      | Horseman        |
| 30        | Rusk         | 02                      | Island Lake     |
| 32        | South Forks  | 17                      | Kalish          |
| 34        | Strickland   | 11                      | Walrath         |
| 36        | Stubbs       |                         |                 |
| 38        | Thornapple   |                         |                 |
| 40        | True         |                         |                 |
| 42        | Washington   |                         |                 |
| 44        | Wilkinson    |                         |                 |
| 46        | Willard      |                         |                 |
| 48        | Wilson       |                         |                 |

**55 ST. CROIX**

| Townships |                 | Cities & Villages       |                   |
|-----------|-----------------|-------------------------|-------------------|
| 02        | Baldwin         | 106                     | Baldwin (V)       |
| 04        | Cady            | 116                     | Deer Park (V)     |
| 06        | Cylon           | 231                     | Glenwood City (C) |
| 08        | Eau Galle       | 136                     | Hammond (V)       |
| 10        | Emerald         | 236                     | Hudson (C)        |
| 12        | Erin Prairie    | 261                     | New Richmond (C)  |
| 14        | Forest          | 161                     | North Hudson (V)  |
| 16        | Glenwood        | 276                     | River Falls (C)   |
| 18        | Hammond         | 176                     | Roberts (V)       |
| 20        | Hudson          | 181                     | Somerset (V)      |
| 22        | Kinnickinnic    | 182                     | Star Prairie (V)  |
| 24        | Pleasant Valley | 184                     | Spring Valley (V) |
| 26        | Richmond        | 191                     | Wilson (V)        |
| 28        | Rush River      | 192                     | Woodville (V)     |
| 30        | St. Joseph      |                         |                   |
| 32        | Somerset        | Unincorporated Villages |                   |
| 34        | Springfield     | 13                      | Boardman          |
| 36        | Stanton         | 15                      | Burkhardt         |
| 38        | Star Prairie    | 17                      | Hersey            |
| 40        | Troy            | 15                      | Houlton           |
| 42        | Warren          | 06                      | Jewett            |

**56 SAUK**

| Townships |             | Cities & Villages |                   |
|-----------|-------------|-------------------|-------------------|
| 02        | Baraboo     | 206               | Baraboo (C)       |
| 04        | Bear Creek  | 111               | Cazenovia (V)     |
| 06        | Dellona     | 141               | Ironton (V)       |
| 08        | Delton      | 146               | Lake Delton (V)   |
| 10        | Excelsior   | 147               | La Valle (V)      |
| 12        | Fairfield   | 148               | Lime Ridge (V)    |
| 14        | Franklin    | 149               | Loganville (V)    |
| 16        | Freedom     | 151               | Merrimac (V)      |
| 18        | Greenfield  | 161               | North Freedom (V) |
| 20        | Honey Creek | 171               | Plain (V)         |
| 22        | Ironton     | 172               | Prairie du Sac    |

|    |                |                                |                  |
|----|----------------|--------------------------------|------------------|
| 24 | La Valle       | 276                            | Reedsburg (C)    |
| 26 | Merrimac       | 176                            | Rock Springs (V) |
| 28 | Prairie du Sac | 181                            | Sauk City (V)    |
| 30 | Reedsburg      | 182                            | Spring Green (V) |
| 32 | Spring Green   | 191                            | West Baraboo (V) |
| 34 | Sumpter        | 291                            | Wis Dells (C)    |
| 36 | Troy           |                                |                  |
| 38 | Washington     | <u>Unincorporated Villages</u> |                  |
| 40 | Westfield      | 17                             | Badger           |
| 42 | Winfield       | 01                             | Devils Lake      |
| 44 | Woodland       | 19                             | Hillpoint        |
|    |                | 04                             | Mirror Lake      |

**57 SAWYER**

| Townships |             | Cities & Villages              |              |
|-----------|-------------|--------------------------------|--------------|
| 02        | Bass Lake   | 111                            | Corderay (V) |
| 04        | Couderay    | 121                            | Exeland (V)  |
| 06        | Draper      | 236                            | Hayward (C)  |
| 08        | Edgewater   | 176                            | Radisson (V) |
| 10        | Hayward     | 190                            | Winter (V)   |
| 12        | Hunter      |                                |              |
| 14        | Lenroot     | <u>Unincorporated Villages</u> |              |
| 16        | Meadow Rock | 14                             | Hauer        |
| 18        | Meteor      | 02                             | Lemington    |
| 20        | Ojibwa      | 03                             | Loretta      |
| 22        | Radisson    | 03                             | Oxbow        |
| 24        | Round Lake  | 14                             | Reserve      |
| 26        | Sand Lake   | 14                             | Stone Lake   |
| 28        | Spider Lake | 16                             | Weirgor      |
| 30        | Weirgor     | 04                             | Wooddale     |
| 32        | Winter      | 04                             | Yarnell      |

**58 SHAWANO**

| Townships |              | Cities & Villages              |                |
|-----------|--------------|--------------------------------|----------------|
| 02        | Almon        | 101                            | Aniwa (V)      |
| 04        | Angelica     | 106                            | Birnamwood (V) |
| 06        | Aniwa        | 107                            | Bonduel (V)    |
| 08        | Bartelme     | 108                            | Bowler (V)     |
| 10        | Belle Plaine | 111                            | Cecil (V)      |
| 12        | Birnamwood   | 121                            | Eland (V)      |
| 14        | Fairbanks    | 131                            | Gresham (V)    |
| 16        | Germania     | 282                            | Marion (C)     |
| 18        | Grant        | 151                            | Mattoon (V)    |
| 20        | Green Valley | 171                            | Pulaski (V)    |
| 22        | Hartland     | 281                            | Shawano (C)    |
| 24        | Herman       | 186                            | Tigerton (V)   |
| 26        | Hutchins     | 191                            | Wittenberg (V) |
| 28        | Lessor       |                                |                |
| 30        | Maple Grove  | <u>Unincorporated Villages</u> |                |
| 32        | Morris       | 09                             | Caroline       |
| 34        | Navarino     | 09                             | Hunting        |
| 36        | Pella        | 02                             | Krakow         |
| 38        | Red Springs  | 12                             | Leopolis       |
| 40        | Richmond     | 12                             | Lyndhurst      |
| 42        | Seneca       | 10                             | Pulcifer       |
| 44        | Washington   | 20                             | Red River      |
| 46        | Waukechon    | 01                             | Shepley        |
| 48        | Wescott      | 07                             | Split Rock     |
| 50        | Wittenberg   | 20                             | Thornton       |
| 52        | Stockbridge  | 21                             | Tilleda        |
|           |              | 02                             | Zachow         |

**59 SHEBOYGAN**

| Townships |                 | Cities & Villages              |                     |
|-----------|-----------------|--------------------------------|---------------------|
| 02        | Greenbush       | 101                            | Adell (V)           |
| 04        | Herman          | 111                            | Cascade (V)         |
| 06        | Holland         | 112                            | Cedar Grove (V)     |
| 08        | Lima            | 121                            | Elkhart Lake (V)    |
| 10        | Lyndon          | 131                            | Glenbeulah (V)      |
| 12        | Mitchell        | 135                            | Howards Grove (V)   |
| 14        | Mosel           | 141                            | Kohler (V)          |
| 16        | Plymouth        | 165                            | Oostburg (V)        |
| 18        | Rhine           | 271                            | Plymouth (C)        |
| 20        | Russell         | 176                            | Random Lake (V)     |
| 22        | Scott           | 281                            | Sheboygan (C)       |
| 24        | Sheboygan       | 282                            | Sheboygan Falls (C) |
| 26        | Sheboygan Falls | 191                            | Waldo (V)           |
| 28        | Sherman         |                                |                     |
| 30        | Wilson          | <u>Unincorporated Villages</u> |                     |
|           |                 | 07                             | Haven               |
|           |                 | 04                             | Hingham             |

**60 TAYLOR**

| Townships |              | Cities & Villages              |                  |
|-----------|--------------|--------------------------------|------------------|
| 02        | Aurora       | 131                            | Gilman (V)       |
| 04        | Browning     | 146                            | Lublin (V)       |
| 06        | Chelsea      | 251                            | Medford (C)      |
| 08        | Cleveland    | 176                            | Rib Lake (V)     |
| 10        | Deer Creek   | 181                            | Stetsonville (V) |
| 12        | Ford         |                                |                  |
| 14        | Goodrich     | <u>Unincorporated Villages</u> |                  |
| 16        | Greenwood    | 18                             | Donald           |
| 18        | Hammel       | 04                             | Hannibal         |
| 20        | Holway       | 08                             | Interwald        |
| 22        | Jump River   | 09                             | Perkinstown      |
| 24        | Little Black | 06                             | Polley           |
| 26        | Mc Kinley    | 03                             | Whittlesey       |
| 28        | Maplehurst   |                                |                  |
| 30        | McKinley     |                                |                  |
| 32        | Medford      |                                |                  |
| 34        | Molitor      |                                |                  |
| 36        | Pershing     |                                |                  |
| 38        | Rib Lake     |                                |                  |
| 40        | Roosevelt    |                                |                  |
| 42        | Taft         |                                |                  |
| 44        | Westboro     |                                |                  |

**61 TREMPPEALEAU**

| Townships |              | Cities & Villages              |                  |
|-----------|--------------|--------------------------------|------------------|
| 02        | Albion       | 201                            | Arcadia (C)      |
| 04        | Arcadia      | 206                            | Blair (C)        |
| 06        | Burnside     | 121                            | Eleva (V)        |
| 08        | Caledonia    | 122                            | Ettrick (V)      |
| 10        | Chimney Rock | 231                            | Galesville (C)   |
| 12        | Dodge        | 241                            | Independence (C) |
| 14        | Ettrick      | 265                            | Osseo (C)        |
| 16        | Gale         | 173                            | Pigeon Falls (V) |
| 18        | Hale         | 181                            | Strum (V)        |
| 20        | Lincoln      | 186                            | Trempealeau (V)  |
| 22        | Pigeon       | 291                            | Whitehall (C)    |
| 24        | Preston      |                                |                  |
| 26        | Sumner       | <u>Unincorporated Villages</u> |                  |
| 28        | Trempealeau  | 14                             | Centerville      |
| 30        | Unity        |                                |                  |



**62 VERNON**

| Townships |            | Cities & Villages |                                |
|-----------|------------|-------------------|--------------------------------|
| 02        | Bergen     | 111               | Chaseburg (V)                  |
| 04        | Christiana | 112               | Coon Valley (V)                |
| 06        | Clinton    | 116               | De Soto (V)                    |
| 08        | Coon       | 131               | Genoa (V)                      |
| 10        | Forest     | 236               | Hillsboro (C)                  |
| 12        | Franklin   | 146               | La Farge (V)                   |
| 14        | Genoa      | 165               | Ontario (V)                    |
| 16        | Greenwood  | 176               | Readstown (V)                  |
| 18        | Hamburg    | 181               | Stoddard (V)                   |
| 20        | Harmony    | 186               | Viola (V)                      |
| 22        | Hillsboro  | 286               | Viroqua (C)                    |
| 24        | Jefferson  | 291               | Westby (C)                     |
| 26        | Kickapoo   |                   |                                |
| 28        | Liberty    |                   | <u>Unincorporated Villages</u> |
| 30        | Stark      | 05                | Mt. Tabor                      |
| 32        | Sterling   | 21                | Rockton                        |
| 34        | Union      | 05                | Valley                         |
| 36        | Viroqua    | 20                | Victory                        |
| 38        | Webster    | 16                | West Prairie                   |
| 40        | Wheatland  |                   |                                |
| 42        | Whitestown |                   |                                |

**63 VILAS**

| Townships |                   | Cities & Villages |                                |
|-----------|-------------------|-------------------|--------------------------------|
| 02        | Arbor Vitae       | 221               | Eagle River (C)                |
| 04        | Boulder Junction  |                   |                                |
| 06        | Cloverland        |                   | <u>Unincorporated Villages</u> |
| 08        | Conover           | 12                | Knudson                        |
| 10        | Lac Du Flambeau   | 05                | Lac Du Flambeau                |
| 12        | Lincoln           | 12                | Land O'Lakes                   |
| 14        | Phelps            | 14                | Mishike                        |
| 16        | Plum Lake         | 09                | Presque Lake                   |
| 18        | Presque Isle      | 05                | Rest lake                      |
| 20        | St. Germain       | 10                | St. Germain                    |
| 22        | Manitowish Waters | 08                | Sayner                         |
| 24        | Land O'Lakes      | 08                | Starlake                       |
| 26        | Washington        | 01                | Trout Lake                     |
| 28        | Winchester        | 09                | Winegar                        |

**64 WALWORTH**

| Townships |                | Cities & Villages |                                |
|-----------|----------------|-------------------|--------------------------------|
| 02        | Bloomfield     | 206               | Burlington (C)                 |
|           |                | 116               | Darien (V)                     |
| 04        | Darien         | 216               | Delavan (C)                    |
| 06        | Delavan        | 121               | East Troy (V)                  |
| 08        | East Troy      | 221               | Elkhorn (C)                    |
| 10        | Geneva         | 126               | Fontana (V)                    |
| 12        | La Fayette     | 131               | Genoa City (V)                 |
| 14        | La Grange      | 246               | Lake Geneva (C)                |
| 16        | Linn           | 153               | Mukwonago (V)                  |
| 18        | Lyons          | 181               | Sharon (V)                     |
| 20        | Richmond       | 191               | Walworth (V)                   |
| 22        | Sharon         | 291               | Whitewater (C)                 |
| 24        | Spring Prairie | 192               | Williams Bay (V)               |
| 26        | Sugar Creek    |                   |                                |
| 28        | Troy           |                   | <u>Unincorporated Villages</u> |
| 30        | Walworth       | 02                | 119 Allen Grove                |
| 32        | Whitewater     | 15                | College Camp                   |
|           |                | 12                | Honey Creek                    |
|           |                | 04                | Lake Beulah                    |
|           |                | 01                | Pell Lake                      |
|           |                | 09                | Springfield                    |
|           |                | 14                | Troy Center                    |
|           |                | 08                | Zenda                          |

**65 WASHBURN**

| Townships |              | Cities & Villages |                                |
|-----------|--------------|-------------------|--------------------------------|
| 02        | Barronett    | 106               | Birchwood (V)                  |
| 04        | Bashaw       | 151               | Minong (V)                     |
| 06        | Bass Lake    | 282               | Shell Lake (C)                 |
| 08        | Beaver Brook | 281               | Spooner (C)                    |
| 10        | Birchwood    |                   |                                |
| 12        | Brooklyn     |                   | <u>Unincorporated Villages</u> |
| 14        | Casey        | 18                | Earl                           |
| 16        | Chicog       | 06                | Lampson                        |
| 18        | Crystal      |                   |                                |
| 20        | Evergreen    |                   |                                |
| 22        | Frog Creek   |                   |                                |
| 24        | Gull Lake    |                   |                                |
| 26        | Long Lake    |                   |                                |
| 28        | Madge        |                   |                                |
| 30        | Minong       |                   |                                |
| 32        | Sarona       |                   |                                |
| 34        | Spooner      |                   |                                |
| 36        | Spring Brook |                   |                                |
| 38        | Stinnett     |                   |                                |
| 40        | Stone Lake   |                   |                                |
| 42        | Trego        |                   |                                |

**66 WASHINGTON**

| Townships |            | Cities & Villages |                                |
|-----------|------------|-------------------|--------------------------------|
| 02        | Addison    | 131               | Germantown (V)                 |
| 04        | Barton     | 236               | Hartford (C)                   |
| 06        | Erin       | 141               | Jackson (V)                    |
| 08        | Farmington | 142               | Kewaskum (V)                   |
| 10        | Germantown | 251               | Milwaukee (C)                  |
| 12        | Hartford   | 181               | Slinger (V)                    |
| 14        | Jackson    | 291               | West Bend (C)                  |
| 16        | Kewaskum   | 161               | Newburg (V)                    |
| 18        | Polk       |                   |                                |
| 20        | Richfield  |                   | <u>Unincorporated Villages</u> |
| 22        | Trenton    | 01                | Aurora                         |
| 24        | Wayne      | 01                | Allenton                       |
| 26        | West Bend  | 10                | Colgate                        |
|           |            | 10                | Hubertus                       |
|           |            | 05                | Rockfield                      |

**67 WAUKESHA**

| Townships |                           | Cities & Villages |                         |
|-----------|---------------------------|-------------------|-------------------------|
| 02        | Brookfield                | 106               | Big Bend (V)            |
| 04        | Delafield                 | 206               | Brookfield (C)          |
| 06        | Eagle                     | 107               | Butler (V)              |
| 08        | Genesee                   | 111               | Chenequa (V)            |
| 10        | Lisbon                    | 216               | Delafield (C)           |
| 14        | Merton                    | 116               | Dousman (V)             |
| 16        | Mukwonago                 | 121               | Eagle (V)               |
| 22        | Oconomowoc                | 122               | Elm Grove (V)           |
| 24        | Ottawa                    | 136               | Hartland (V)            |
| 28        | Summit                    | 146               | Lac La Belle (V)        |
| 30        | Vernon                    | 147               | Lannon (V)              |
| 32        | Waukesha                  | 151               | Menomonee Falls (V)     |
|           |                           | 152               | Merton (V)              |
|           |                           | 250               | Milwaukee (C)           |
|           | <u>Unincorp. Villages</u> | 13                | Duplainville            |
|           |                           | 04                | Genesee Depot           |
|           |                           | 07                | North Lake              |
|           |                           | 11                | Okauchee                |
|           |                           | 02                | Statesan                |
|           |                           | 05                | Templeton               |
|           |                           |                   | 265 Oconomowoc (C)      |
|           |                           |                   | 166 Oconomowoc Lake (V) |
|           |                           |                   | 171 Pewaukee (V)        |
|           |                           |                   | 270 Pewaukee (C)        |

181 Sussex (V)  
 191 Wales (V)  
 291 Waukesha (C)

**68 WAUPACA**

| Townships                      |             | Cities & Villages |                  |
|--------------------------------|-------------|-------------------|------------------|
| 02                             | Bear Creek  | 106               | Big Falls (V)    |
| 04                             | Caledonia   | 211               | Clintonville (C) |
| 06                             | Dayton      | 121               | Embarrass (V)    |
| 08                             | Dupont      | 126               | Fremont (V)      |
| 10                             | Farmington  | 141               | Iola (V)         |
| 12                             | Fremont     | 251               | Manawa (C)       |
| 14                             | Harrison    | 252               | Marion (C)       |
| 16                             | Helvetia    | 261               | New London (C)   |
| 18                             | Iola        | 165               | Ogdensburg (V)   |
| 20                             | Larrabee    | 181               | Scandinavia (V)  |
| 22                             | Lebanon     | 291               | Waupaca (C)      |
| 24                             | Lind        | 292               | Weyauwega (C)    |
| 26                             | Little Wolf |                   |                  |
| 28                             | Matteson    |                   |                  |
| <u>Unincorporated Villages</u> |             |                   |                  |
| 30                             | Mukwa       | 05                | King             |
| 32                             | Royalton    | 07                | Northland        |
| 36                             | Scandinavia | 15                | Northport        |
| 38                             | Union       | 02                | Readfield        |
| 40                             | Waupaca     | 05                | Sheridan         |
| 42                             | Weyauwega   | 19                | Symco            |
| 44                             | Wyoming     |                   |                  |

**69 WAUSHARA**

| Townships                      |             | Cities & Villages |                |
|--------------------------------|-------------|-------------------|----------------|
| 02                             | Aurora      | 111               | Coloma (V)     |
| 04                             | Bloomfield  | 136               | Hancock (V)    |
| 06                             | Coloma      | 146               | Lohrville (V)  |
| 08                             | Dakota      | 171               | Plainfield (V) |
| 10                             | Deerfield   | 191               | Redgranite (V) |
| 12                             | Hancock     | 291               | Wautoma (C)    |
| 14                             | Leon        | 191               | Wild Rose (V)  |
| 16                             | Marion      |                   |                |
| 18                             | Mt. Morris  |                   |                |
| <u>Unincorporated Villages</u> |             |                   |                |
| 20                             | Oasis       | 01                | Auroraville    |
| 22                             | Plainfield  | 07                | Pine River     |
| 24                             | Poy Sippi   | 02                | W. Bloomfield  |
| 26                             | Richford    |                   |                |
| 28                             | Rose        |                   |                |
| 30                             | Saxeville   |                   |                |
| 32                             | Springwater |                   |                |
| 34                             | Warren      |                   |                |
| 36                             | Wautoma     |                   |                |

**70 WINNEBAGO**

| Townships                      |            | Cities & Villages |                 |
|--------------------------------|------------|-------------------|-----------------|
| 02                             | Algoma     | 201               | Appleton (C)    |
| 04                             | Black Wolf | 251               | Menasha (C)     |
| 06                             | Clayton    | 261               | Neenah (C)      |
| 08                             | Menasha    | 265               | Omro (C)        |
| 10                             | Neenah     | 266               | Oshkosh (C)     |
| 12                             | Nekimi     | 191               | Winneconne (V)  |
| 14                             | Nepeuskun  |                   |                 |
| 16                             | Omro       |                   |                 |
| <u>Unincorporated Villages</u> |            |                   |                 |
| 18                             | Oshkosh    | 13                | Allenville      |
| 20                             | Poygan     | 15                | Butte Des Morts |
| 22                             | Rushford   | 11                | Eureka          |
| 24                             | Utica      | 12                | Fisk            |
| 26                             | Vinland    | 03                | Larsen          |
| 28                             | Winchester | 12                | Pickett         |
| 30                             | Winneconne | 07                | Rush Lake       |
| 32                             | Wolf River | 11                | Waukau          |
|                                |            | 09                | Winnebago       |

**71 WOOD**

| Townships                      |              | Cities & Villages |                      |
|--------------------------------|--------------|-------------------|----------------------|
| 02                             | Arpin        | 101               | Auburndale (V)       |
| 04                             | Auburndale   | 106               | Biron (V)            |
| 06                             | Cameron      | 271               | Pittsville (C)       |
| 08                             | Cary         | 171               | Port Edwards (V)     |
| 10                             | Cranmoor     | 251               | Marshfield (C)       |
| 12                             | Dexter       | 151               | Milladore (V)        |
| 14                             | Grand Rapids | 261               | Nekoosa (C)          |
| 16                             | Hansen       | 178               | Rudolph (V)          |
| 18                             | Hiles        | 186               | Vesper (V)           |
| 20                             | Lincoln      | 291               | Wisconsin Rapids (C) |
| 22                             | Marshfield   | 122               | Hewitt (V)           |
| 24                             | Milladore    | 100               | Arpin (V)            |
| 26                             | Port Edwards |                   |                      |
| 28                             | Remington    |                   |                      |
| <u>Unincorporated Villages</u> |              |                   |                      |
| 30                             | Richfield    | 14                | Babcock              |
| 32                             | Rock         | 12                | Blenker              |
| 34                             | Rudolph      | 06                | Dexterville          |
| 36                             | Saratoga     | 16                | Lindsey              |
| 38                             | Seneca       |                   |                      |
| 40                             | Sherry       |                   |                      |
| 42                             | Sigel        |                   |                      |
| 44                             | Wood         |                   |                      |

## PURPOSE

This subject provides general guidance on the sizes of signs to be used based on certain highway characteristics. **This guideline does not apply to sizes for STOP signs. There is a separate guideline pertaining to the required sizes for STOP signs for roadways ([TEOpS 2-2-5](#)).**

## DEFINITIONS

For the purposes of this guideline, highways are grouped by certain characteristics into a defined highway facility:

Freeways are divided arterial highway facilities that have full control of access by means of grade separation at interchanges only.

Expressways are divided arterial highway facilities that have partial control of access, generally with grade separations at major intersections.

Conventional highways are either divided or undivided roadway facilities that have no control of access and no grade separations at intersections.

2S is the sign size designation of conventional highway signs for single-lane conventional highways or multi-lane conventional highways with a posted speed of 35mph or less.

2M is the sign size designation of regulatory and warning signs for multi-lane conventional highways with a posted speed of 40mph.

## POLICY

This guideline establishes the standard sign size to be used for each defined highway facility. Signs larger than the standard size *may* be used selectively and with documentation of the specific situational reason for use of a sign larger than the standard. Whenever a sign smaller than the standard is used, the conditions such as space or visibility constraints *should* be documented and approved by the Regional traffic engineer. The designer **shall** work with the Region Traffic Section to determine the proper sign sizes:

1. Freeways and interstate highways, size 5 signs, regardless of the posted speed limit.
2. Expressways with posted speed limits of 65 mph, use size 5 signs. Expressways with posted speed limits of 60, 55, or 50 mph, use size 4 signs. Use size 2S signs for side road approaches or that when approaching a highway facility would require a larger sign size under this guideline, use the larger size.
3. On and off ramps for service interchanges, use size 2S signs. System interchange ramps, use size 5 signs.
4. Conventional highways with single lanes (all speeds) and multi-lane conventional highways with a posted speed of 35 mph or less, use size 2S signs. Size 2M signs *may* also be used, at the discretion of the Region, to upsize sign sizes on single lane conventional highways or multi-lane conventional highways with a posted speed of 35 mph or less.
5. Conventional multilane roadways, with a posted speed of 40 mph, use size 2M regulatory and warning signs.
6. Conventional multi-lane roadways, with a posted speed of 45 mph or greater, use size 3 signs. As an option, size 2M *may* be used for urban conventional multi-lane roadways with posted speeds of 45 mph if there are limiting physical factors that would not make size 3 signs feasible. Some of these limiting physical factors would include: narrow terrace or median widths, close driveway spacing and close intersection spacing.
7. Size 1 signs *may* be used on streets and highways which are neither state trunk highways, nor connecting highways when there is no more than one lane of traffic in each direction, and the posted speed limit is 30 mph or less.
8. Additional sign size criteria for bypasses are contained in [TEOpS 2-15-53](#) (bypass Signing).

## 2-1-41 Jurisdictional Boundary Signs

### GENERAL

Communities *may* request informational signing to either identify their municipal boundaries or to promote/advertise their community. These types of signs are considered to be Jurisdictional Boundary signs and *may* take the form of three different types of signs:

- Welcome signs
- Enhanced political boundary signs
- Community population signs.

The community population signs and enhanced political boundary signs are considered a traffic sign and are allowed on the highway right-of-way. Per Wis. Stat. s. 86.19 (1n) and (1p), municipal and tribal nation welcome signs are not traffic control devices and are not subject to the provisions of the WisMUTCD. A municipality or tribal nation *may* erect and maintain within the right-of-way of any highway, a welcome sign as defined in s.84.30(2)(hm), within the boundaries of the municipality or Indian reservation or other land held in trust for the tribe or band. This policy provides guidance for working with these types of signing requests.

### AUTHORITY

[Wis. Stat. s. 86.19](#) prohibits signs within the limits of any highway except as are necessary for the guidance or warning of traffic and certain other exceptions as provided in that section. This statute also requires the Department to prescribe regulations with respect to erection of signs on public highways.

The MUTCD Section [1A.01](#) states that advertising messages **shall not** appear on traffic control devices and Section [1A.10](#) states that the design, application and placement of traffic control devices, other than those adopted in the MUTCD are prohibited.

Therefore, the 2009 MUTCD and Wisconsin State Statute 86.19 have specific standards regarding the design and installation of such signing:

### POLICY FOR COMMUNITY WELCOME SIGNS

Welcome signs are defined as an official sign that is erected and maintained by or for a local government within the boundaries of the municipality or tribal land to inform motorists of the territorial boundaries of the community.

The Highway Maintenance Manual 09-20-30 contains the formal detailed policy governing the permitting of Municipal or Tribal Nation Welcome Signs.

In summary, HMM 09-20-30 states:

1. Welcome signs along state highways *may* be permitted when located on or off the highway right-of-way. When off the right-of-way, the sign is considered an outdoor advertising sign and a permit is required under [s. 84.30](#) and [Trans 201.05](#).
2. Unpermitted welcome signs **should** be removed if conditions warrant that the sign cannot be permitted as is. Prior to removal, the Department will work with the community to determine if the sign may be moved to a different location, rebuilt with yielding features/materials, shielded, etc. to allow issuance of a DT1812 permit.
3. Welcome signs installed within the highway right-of-way shall require a work on right-of-way permit ([DT 1812](#) form).
4. Welcome signs that are within the clear zone or clear recovery area on the right-of-way **should** be constructed with breakaway or yielding features/materials. If not, then WisDOT approved shielding **shall** be provided for the sign.
5. No welcome sign will be allowed to remain if it is a safety hazard. The permittee **shall** be responsible for any costs incurred by the Department to correct or eliminate hazards related to the welcome sign.
6. Welcome signs **shall not** have auxiliary plaques, as these are considered advertising, and not allowed per s. 86.19.
7. Welcome signs are not allowed to be placed within the right-of-way of interstate highways but *may* be allowed on freeways.
8. Welcome signs are not owned or installed by the Department.
9. Welcome signs **shall not** be installed where vision corners may be blocked, such as at intersections or median breaks.

10. Care shall be taken to ensure that vision of existing or planned traffic signs is not blocked.

## **POLICY FOR ENHANCED POLITICAL BOUNDARY SIGNS**

Enhanced political boundary signs are more of an informational sign as they do not directly provide a guidance function for the motorist. These signs are traffic signs that are installed on conventional highways, in the highway right-of-way, at the municipal limits by permit. The signs serve the functions of conveying the municipal limits of a community and *may* tie into the theme of the community by utilizing different colors and/or a pictograph on the sign.

## **GENERAL POLICY CRITERIA**

1. If off-right-of-way location efforts fail for a welcome sign, then a community could apply for a permit to install and maintain an “enhanced political boundary sign.” Enhanced political boundary signs **shall not** be allowed if there is an off-right-of-way welcome sign in place.
2. If an enhanced political boundary sign is installed, then WisDOT would remove the standard population sign.
3. Enhanced political boundary signs *should* be ground-mounted on the right side of the roadway. Ground-mounted median signs *may* be installed if right-side installation opportunities are not available. No overhead sign installations are allowed.
4. Supplemental signs (tree city USA, 1979 baseball champs, lions clubs, etc.) **shall not** be allowed on the enhanced political boundary signs or supports.
5. Enhanced political boundary signs **shall** only be allowed on conventional highways for incorporated cities and villages, located at the municipality border. Enhanced political boundary signs **shall not** be allowed for townships or unincorporated communities.
6. All enhanced political boundary sign requests, including CSS projects, **shall** be approved by the Region Traffic Engineer. Requestor **shall** furnish proposed locations, sign and pictograph design and type of supports used.
7. The community population number *may* be included on the enhanced political boundary sign.
8. The community **shall** be responsible for all costs associated with the manufacture, installation and maintenance of the permitted enhanced political boundary signs.

## **SIGN DESIGN STANDARDS**

1. Destinations, arrows or specific traffic generators **shall not** be allowed on the signs.
2. The pictograph (logo) height **shall not** exceed two times the height of the upper case letters and **shall** be located at the top or left side of the sign. The pictograph **shall** be the official designation adopted by the jurisdiction. The pictograph *may* contain wording, provided it is not a commercial advertising message. Only one pictograph is allowed per sign.
3. Enhanced political boundary signs **shall not** be lighted or contain any animated or moving parts, flashing lights or disks.
4. At minimum, enhanced political boundary signs **shall** utilize Type H—High Intensity sheeting.
5. Minimum letter size **shall** be 4 ½” lowercase, 6: uppercase letters. Maximum sign size **shall** be 72: width by 48: height.
6. Sign base material **shall** be in accordance with [Section 637 of the WisDOT Standard Construction Specifications](#).
7. The sign shape **shall** be rectangular. Aluminum signs **shall** have rounded corners.
8. Border is required on the signs and **shall** be retroreflective, and of the same color as the text.
9. Colors **shall** meet the standards for highway colors specified by the Federal Highway Administration.

Two color combinations *may* be used which are:

- White or yellow on blue, green or brown
- Blue, green, black or brown on white

- Red or orange on white, but not the reverse
- The background colors of orange, red, yellow, purple, or the fluorescent versions thereof, fluorescent yellow green and fluorescent pink **shall not** be allowed. One background color only allowed. Lettering and border (if used) **shall** be of the same color.

### SIGN INSTALLATION STANDARDS

1. The standard WisDOT posts (4" x 6" wood or 2" x 2" tube steel) *may* be used. The community also *may* be allowed to utilize other types of sign posts. Non-standard sign posts **shall** conform to [TEOpS 2-15-52](#).
2. Sign installation and placement **shall** be per WisDOT standards.
3. Sign mounting height **shall** be five feet to bottom of sign.
4. Sign locations **shall** be approved by WisDOT. Signs **shall** be located outside of the influence area of an intersection (typically 200' minimum distance from the intersection).
5. WisDOT **shall** approve any proposed landscaping plans. Any landscaping items **shall** meet breakaway standards or be shielded with FHWA approved shielding. For example, there is a 20" high decorative curb that meets FHWA standards.

### POLICY FOR COMMUNITY POPULATION SIGNS

1. City or village limit signs *may* be installed on freeways or expressways at or near where the highway enters the municipality, unless the city or village is identified on the primary guide signs or a supplemental guide sign.
2. City or village population signs **shall** be installed on conventional highways at or near where the highway enters the municipal limits. WisDOT will install and maintain the standard signs with the official current decennial census figures. No other signs **shall** share the supports.
3. If the city or village requests a population update, the Regional Traffic Engineer *may* authorize the municipality to modify the numbers with a white on green Type H adhesive overlay, using the same size and font as the original sign.
4. Signing for unincorporated communities is covered in [TEOpS 2-4-48](#).

### APPLICATION AND PERMIT

1. Permit **shall** be approved by the WisDOT Regional Traffic Engineer.
2. The application from the requesting community **shall** contain a plan showing the sign location(s) and sign fabrication detail (including colors and heights of letters and pictograph).

## 2-1-42 State Entrance Signing

December 2022

### PURPOSE

In the past, several different signs have been installed along Department-maintained roadways at state entrances. In some cases, several signs have been installed on the same support. At some state entrances, blue and green signs cut out partially in the shape of Wisconsin have been installed. Based on an interpretation received from FHWA in 2013, the shape of these signs is not in conformance with the 2009 MUTCD. This policy will define the appropriate sequence of signs when entering the state along a Department-maintained roadway.

### DEFINITIONS

Freeways are defined as divided arterial highway facilities that have full controlled access, by means of grade separation at interchanges only.

Expressways are defined as divided arterial highway facilities that have partial control of access and generally with grade separations at major intersections.

Conventional Highways are defined as either divided or undivided roadway facilities that have no control of access with grade separations at intersections. These highways can be two lane or multilane facilities.

## POLICY

### Freeways and Expressways

The standard order of sign installations along a freeway or expressway, beginning at the state line, is shown below. 200' minimum spacing *should* be maintained between each sign installation. Note that this order may need to be adjusted based on field conditions.

1. I2-1 (Wisconsin) with I2-2 (County name) directly below.
2. J4-series (Reassurance Assembly)
3. R2-1 (Speed Limit)
4. R5-60 (Move Over or Slow Down)
5. D12-5 (Travel Info Call 511)

In addition to this on-right-of-way signing, for freeway and expressway entrances to the state, a large timber "Wisconsin Welcomes You" sign is typically installed in an off-right-of-way location that is visible to traffic.

### Conventional Highways

The standard order of sign installations along a conventional highway, beginning at the state line, is shown below. 200' minimum spacing *should* be maintained between each sign installation in rural areas. 100' minimum spacing *should* be maintained between each sign in urban areas. Note that this order *may* need to be adjusted based on field conditions.

1. If a large timber sign is not present, the I2-1B *should* be used instead of the I2-1 with I2-2 (County name) directly below.
2. I2-3 (Community population sign) – only if entering municipal limits
3. J4-series (Reassurance Assembly)
4. R2-1 (Speed Limit)
5. D2-series – not used if entering municipal limits

In addition to this on-right-of-way signing, for conventional highway entrances to the state that are part of the National Highway System, a large timber "Wisconsin Welcomes You" sign is typically installed in an off-right-of-way location that is visible to traffic. If a large timber sign is present, I2-1 *should* be used instead of the I2-1B

## IMPLEMENTATION

There is no formal phase-in period for installation of this signing. Existing non-conforming state entrance signs will be allowed to remain in place until the end of their useful life. Useful life ends when the sign message no longer meets legibility or condition standards. Existing non-conforming state entrance signs *may* be replaced prior to the end of their useful life when opportunities arise such as knockdown or damage, when other work is occurring nearby, or when projects make replacement practical.

### **2-1-45 Usage of Fluorescent Sheeting on Signs**

**August 2013**

#### **PURPOSE**

Fluorescent colored sheeting can be advantageous to use on certain traffic signs. In addition to enhanced nighttime retroreflectivity, the fluorescent color allows for greater daytime conspicuity of signs as well. This is especially important for enhancing traffic safety of the motorist and addressing the fact that a greater percentage of people in our population are becoming older and their eyesight requires a brighter sheeting material.

There are three colors of fluorescent sheeting that are commercially available: orange, yellow and yellow-green. The Federal Highway Administration allows the use of fluorescent yellow-green sheeting on some warning signs for pedestrian, bicycle, playground and school applications. The following guidelines limit the usage of the three fluorescent sheeting colors to certain specific signs in order to retain the unique quality of the sheeting.

#### **POLICY**

##### Fluorescent Yellow Sheeting

Beginning in 2010, WisDOT has been in the process of converting yellow warning signs from ASTM D4956 Type IV (prismatic high intensity yellow) to ASTM D4956 Type XI fluorescent yellow, starting with the most

critical of warning signs. Phase 1 (June 2010) included signs such as Stop Ahead, No Passing Zone, Pedestrian Crossing, Chevrons and Large Arrows. Phase 2 (June 2012) included Curve and Turn signs, Intersection Warning signs, advisory speed signs and bridge object markers. The final phase for implementation (Phase 3) will be for the remainder of the warning signs. This change will be completed by December 1, 2013. Beginning with the December 2013 letting, all warning signs on WisDOT projects will be converted to ASTM D4956 Type XI fluorescent yellow. Replace existing conventional yellow signs with fluorescent yellow as they wear out, through improvement projects or sign damage/knockdowns.

All chevrons in a curve or turn **shall** match sheeting color (either fluorescent yellow or conventional yellow). If warning signs are doubled up on an approach, the sheeting **shall** match (either fluorescent yellow or conventional yellow). Supplemental warning plaques **shall** match the main signs that they supplement. No mixing of colors.

#### Fluorescent Yellow-Green Sheeting

S1-1 School Crossing Signs, S4-51 School Speed Limit Assemblies, S4-52 School In-Street Pedestrian Crossing Signs, S4-5 School Reduced Speed Limit Warning Signs on the WisDOT highway system **shall** use fluorescent yellow-green sheeting. The usage of fluorescent yellow-green sheeting **shall** also be used on the Ahead plaque (WF16-9P) for the School Advance Sign location, and Diagonal Down Arrow Signs (WF16-7L and WF16-7R) for the School Crossing Sign location. No other signs **shall** use the fluorescent yellow=green sheeting.

#### S3-1 School Bus Stop Ahead and S3-51 School Bus Traffic Signs

Replace existing conventional yellow signs with fluorescent yellow signs as they wear out, through improvement projects or damage claim knockdowns. All School Bus Stop Ahead signs and School Bus Traffic signs **shall** be replaced with the fluorescent yellow-green symbol sign no later than January 1, 2016.

Any signs with fluorescent yellow=green sheeting other than the School Crossing signs that were installed before the date this policy became effective *may* remain in place. Once these signs have reached their useful life, the Region **shall** replace them with regular yellow sheeting signs.

#### Fluorescent Orange Sheeting

Fluorescent orange sheeting **shall** be used on all work zone warning signs.

Fluorescent orange sheeting **shall** be used for all construction detour route assemblies (M4-5 TO, M5 and M6 series arrows and M4-8 detour plaques) and traffic control fixed message signs.

## **2-1-50 Snowmobile Trail Signing**

**August 1995**

At some locations on state trunk highway right-of-ways, local agencies *may* erect signing for the purpose of directing and controlling snowmobile operations. This is permissible unless there is some problem generated by the existence of snowmobiles at specific locations. Signing for the snowmobile trails is described in [Administrative Code NR 50](#), and also described with typical applications illustrated in DNR's "[Trail Signing Handbook](#)", 1994. A copy of this book *should* be kept in each traffic section.

In interpreting this book the following is offered:

1. All responsibility for signing along the trail is local, including installation and maintenance.
2. The Department's responsibility includes only signs which *may* be requested directing to trail head parking lots, and such warning signs directed to motorists advising of snowmobile crossings where these warnings are warranted.
3. Regarding illustrations in the book (figures on pages 19-22 and page 28):
  - a. Warning signs on the trail when visible from the highway *should* be the minimum size specified.
  - b. Orange markers on the right-of-way would usually be unnecessary except to mark a turn.
  - c. STOP signs are shown too close to the highway. They *should* be back of the snowplowing range, at least 20' from the pavement and desirably more.
  - d. STOP signs *should* be parallel to the highway, and the trail approaching the highway *should* be aligned to be as near to a right angle as possible.
  - e. Warning signs on the highway are shown routinely in the illustrations. On state trunk highways,



they are only to be installed where warranted, usually due to sight conditions.

4. On page 12 of the handbook: "If requested, the Department will install and maintain guide signs for trail head parking lots. The signs *should* contain the word 'Parking.'"

The term "snowmobile route" is defined to mean snowmobile travel on an unplowed roadway. Consequently, "routes" are not to be signed on state trunk highways or connecting highways.

5. Sign posts on the right-of-way installed by local agencies **shall** meet the same small support safety standards as those erected by the Department.
6. Trail signs **shall not** be attached to any of the Department's signposts.

## 2-1-55 Alternate Roadway Signing

April 2001

### PURPOSE

In some areas of the state, there are sections of roadways that are frequently closed to traffic for brief periods of time. As a result, motorists are directed to use an alternate route, usually by law enforcement officials. Many of these alternate route locations are used frequently enough that they could be permanently signed as alternate roadways.

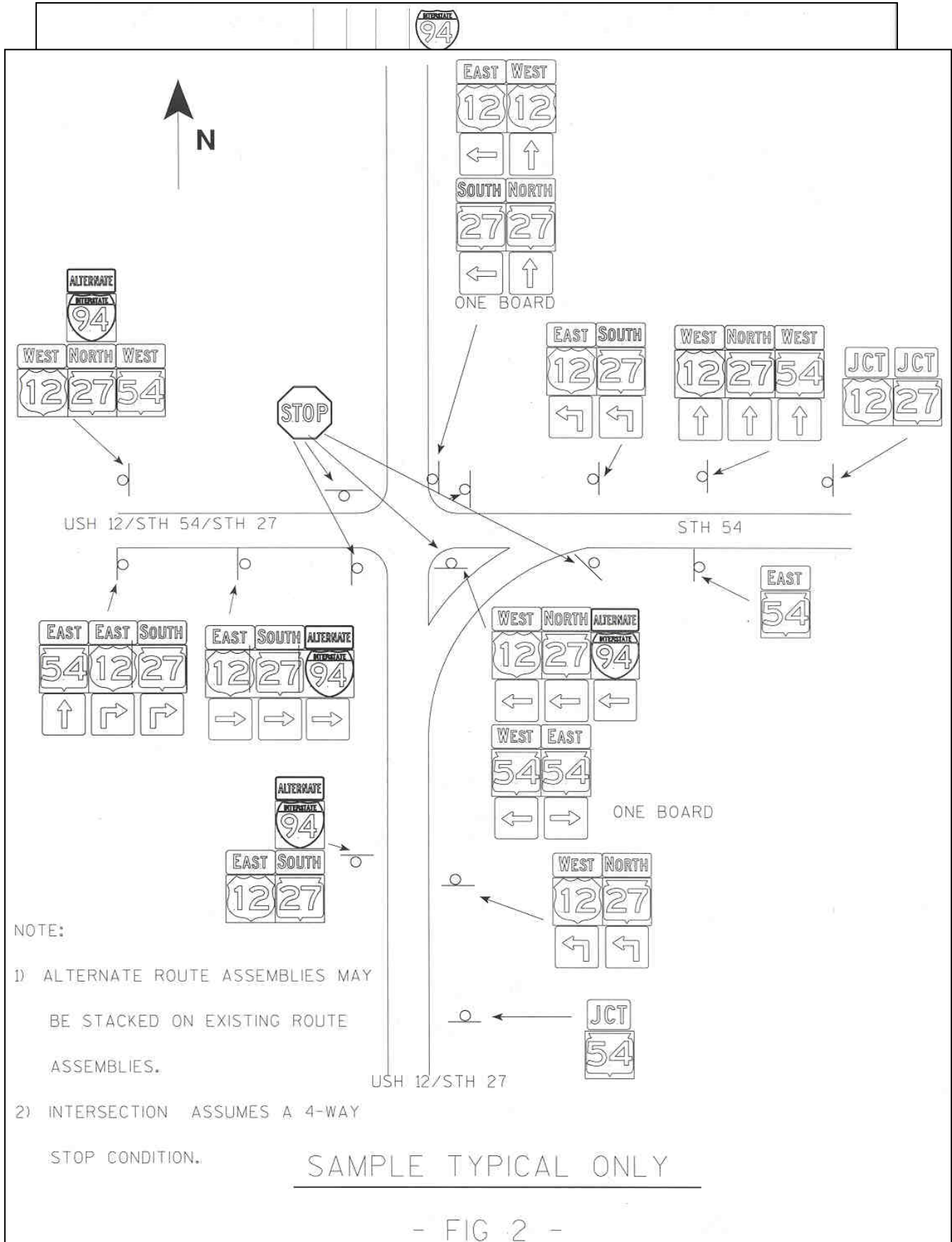
There are several benefits of alternate roadway signing. Alternate signing can direct traffic onto an alternate roadway in case the mainline roadway is closed, due to bad weather, crashes, or other incidents. A permanently signed alternate route can assist State Patrol Troopers and other personnel because less manpower will be required to direct motorists on an alternate route.

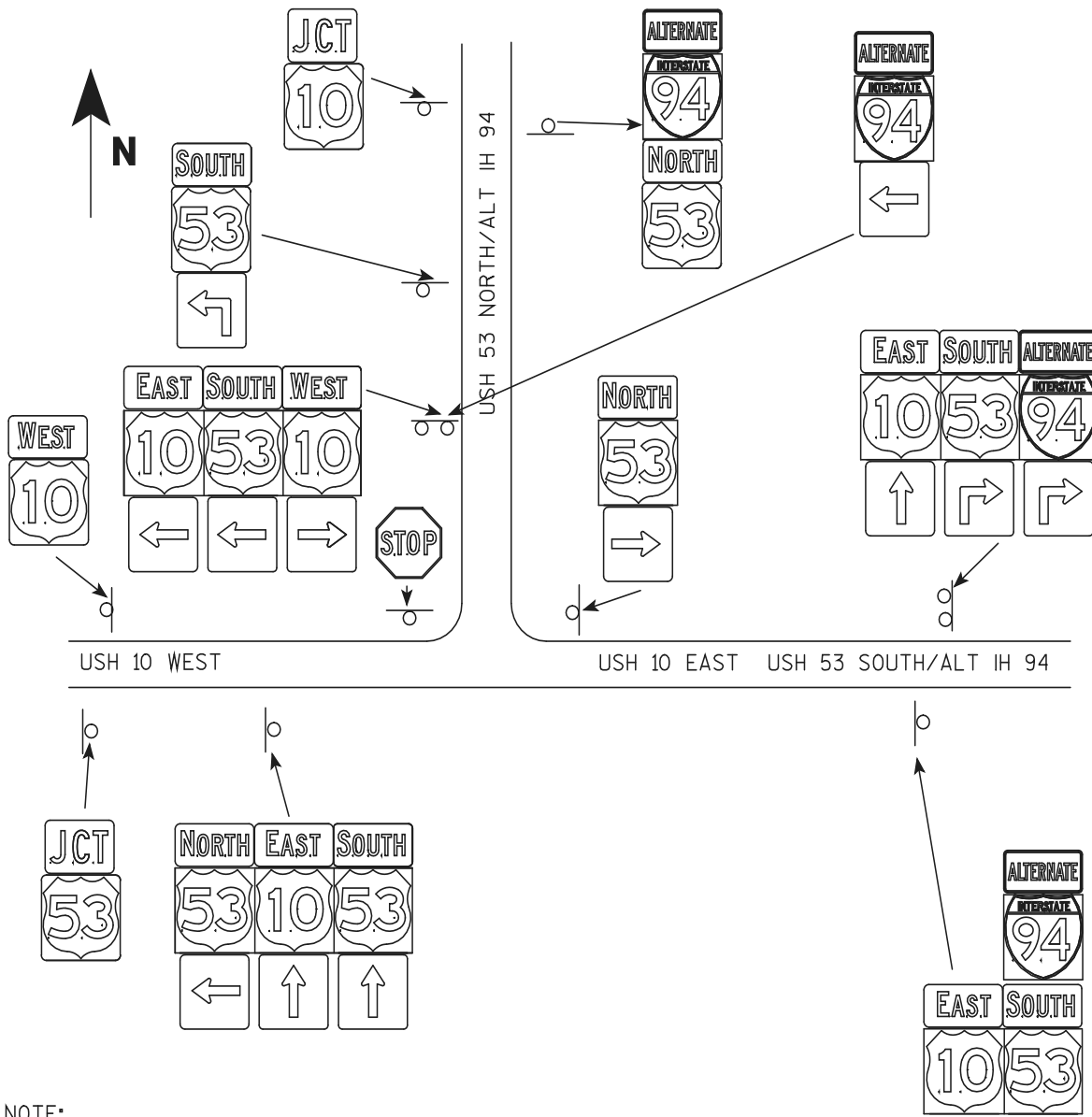
### INSTALLATION GUIDELINES

The following criteria *should* be considered by each Regional Traffic Section in the design/implementation of permanent signing for an alternate roadway. It *should* be noted that this type of alternate route signing is optional in each Region and the Region will have the final say on whether to approve or deny this signing. Example details are also provided as part of this policy. This policy applies to the signing of alternate routes for mainline roadways that re on the WisDOT system.

1. During the design of alternate roadway signing, the Regional Traffic Section *should* contact the State Patrol and local highway officials for comment. Some existing county trunk highways and local roads *may* not be suitable as alternate traffic routes. The Region *should* check to see if the alternate route being considered has been previously designated a long truck route. Per [Wisconsin Administrative Code 276.08](#), once a route is permanently signed as an alternate, it will legally be considered a long truck route. The Region *should* be aware that there is a potential problem of truckers legally using the alternate route even if the main route is open.
2. The alternate marker (M4-1 sign) **shall** be used in conjunction with the appropriate route marker shield. For interstate applications, the alternate marker (MB4-1 sign) **shall** be used with the interstate marker shield. The MB4-1 sign has white lettering on a blue background.
3. Figure 1 shows the use of a horizontal-cut aluminum folding alternate roadway sign. The folding alternate roadway sign is mounted below the EXIT gore sign. The State Patrol or other law enforcement officials could flip this sign open in times of roadway closure. Once traffic is directed off the mainline roadway, there would be alternate signing all along the alternate route that would direct motorists. **Usage of this sign has been determined to be optional. It is recommended that the Regional Traffic Section contact their State Patrol Regional office for input on the usage of this sign.**
4. No cardinal direction signs *should* be placed on the alternate route sign assemblies unless a specific direction is required.
5. The use of a vertical route panel is encouraged wherever possible (as shown on the examples). The placement of alternate route assemblies in urban areas *may* be difficult due to space restrictions. Alternate route assemblies *may* be stacked on existing route assemblies. Normally, 24" and 36" marker heads are used. For extreme space constraints, 18" marker heads can be specially ordered. For roadways that have multiple route assemblies (i.e. Interstate 39-90-94 in Southwest Region), one of the numbers can be used for the alternate route assembly on the alternate route.
6. The horizontal size of the alternate route marker sign *should* be the same as the horizontal size of the roadway marker signs already on the roadway.

7. The placement of reassurance markers will differ on each route, but in general they *should* be placed every (+/-) 5 miles, or as needed. The alternate reassurance markers *should* be stacked whenever possible and *may* be placed with every reassurance marker on the roadway.
8. Generally, for a stop condition or right turn no stop condition, alternate route assemblies with advanced turn arrows would not be used, as shown on Figure 2. However, conditions such as unusual intersection geometrics and/or multi-lanes *may* require the addition of alternate assemblies with advanced turn arrows.
9. For a no stop condition, as shown on Figure 3, alternate route assemblies with advanced turn arrows *should* be used.
10. It is recommended that the Regions send their completed alternate roadway signing layouts to Central Office Traffic Operations for review prior to installation.





NOTE:

- 1) ALTERNATE ROUTE ASSEMBLIES MAY BE STACKED ON EXISTING ROUTE ASSEMBLIES.
- 2) INTERSECTION ASSUMES A "NO STOP" CONDITION FOR USH 10 TRAFFIC.

SAMPLE TYPICAL ONLY

- FIG 3 -

## PURPOSE

Community Sensitive Design for signing is the incorporation of a sign or logo to blend in architecturally with a structure. There are many requests to utilize community Sensitive Designs (CSD) for signing along state-maintained highways. This type of signing can be very popular because they add an aesthetic community value to the roadway. However, there are several policies and guidelines that must be followed in this approach. MUTCD section [1A.01](#) states that Traffic Control Devices or their supports **shall not** bear any advertising message or any other message that is not related to traffic control. Advertising is only allowed on signs off of the highway right-of-way. [Wisconsin State Statute 86.19\(1\)](#) states that no sign **shall** be placed within the limits of any street except such as necessary for the guidance or warning of traffic.

## DEFINITIONS

Freeways are defined as divided arterial highway facilities that have full controlled access, by means of grade separation at interchanges only.

Expressways are defined as divided arterial highway facilities that have partial control of access and generally with grade separations at major intersections.

Conventional highways are defined as divided or undivided roadway facilities that have limited access with no grade separations at intersections. These highways *may* be two lane or multi-lane facilities.

## POLICY

Any Community Sensitive Design for signing *should* ensure that the message or logo does not compete with the essential message of any official traffic signs, nor create a distraction from conveying essential traffic information. In addition, any Community Sensitive Design for signing needs to ensure that there is no advertising of any kind. Welcome signs as part of the design aspect of a structure **shall not** be allowed. Stand-alone welcome signs are covered in [TEOpS 2-1-41](#).

## GUIDELINES

Community Sensitive Designs for signing will be allowed on state-maintained roadways provided the following criteria are met:

1. Except for street name identifications (covered in items 2, 3 and 4 below), other word messages **shall not** be used, including wording within logos.
2. Street name identifications *may* be formed into the concrete as part of the structure. They **shall** be independent and not included as part of a logo.
3. On freeways and expressways, street name identifications **shall** be a minimum of 6" lowercase or 8" uppercase letters, with a minimum letter stroke width equivalent to FHWA Series E.
4. On conventional highways, street name identifications **shall** be a minimum of 4 ½" lowercase or 6" uppercase letters, with a minimum letter stroke width equivalent to FHWA Series E.
5. Logos or designs **shall not** bear any resemblance to official logos already in place on official guidance or motorist Specific Information Signs (SIS signs).
6. Logos or designs **shall not** bear any resemblance to official advertising, correspondence or municipal logos.
7. Logo and designs, including designs for street name identifications, **shall** be submitted to WisDOT Central Office, Bureau of Highway Operations for review and approval.
8. Any existing non-conforming Community Sensitive Design signing already in place **shall** be allowed to remain until the end of its service life. Once the design has reached the end of its service life, it **shall** be removed and not be replaced.
9. Some architecturally acceptable logos would include logos of:
  - a. Wildlife
  - b. State Capitol
  - c. State outline
  - d. Floral patterns
  - e. Outlines of city buildings
  - f. Animals
  - g. Ships/boats.

10. Internally or externally illuminated logos **shall not** be allowed.
11. Portraits of people **shall not** be allowed.
12. Logos or designs *should* be uniquely related to the community in which the structure is located.
13. Bridge painting is not allowed to resemble a sign or message.

## **2-1-65 Pedestrian Crossing Flags**

**January 2018**

### **GENERAL**

There are currently efforts by communities to enhance the visibility of pedestrians within crosswalks. Typically, these are crosswalks that are not at a stop or signalized location. Communities have adopted a pedestrian flag program where flags are provided at the pedestrian crossing to assist with increasing visibility of pedestrians crossing the street. This flag concept is like the concept of placing retroreflective material on clothing. Based on an April 27, 2005 Interpretation Letter from FHWA, it has been determined that these flags are not traffic control devices and therefore, no direct guidance is given in the 2009 MUTCD on the design and application of pedestrian flags. The 2009 MUTCD, Section 6E.03 does provide standards and guidance for hand signaling devices, including flags, for work zones.

This policy is developed to provide specific guidelines for handling requests for the installation of pedestrian crossing flags for crossings on the state highway system.

### **POLICY**

1. All requests to install pedestrian flag devices **shall** be made by the municipality.
2. Flag holder devices **shall not** be attached to WisDOT maintained sign posts.
3. The municipality **shall** be responsible for all installation and maintenance costs of the flag devices.
4. Pedestrian Crossing flags **shall** only be allowed at WisDOT permitted crosswalks.
5. For maximum visibility, flags **shall** be red or fluorescent orange-red in color. Flags **shall** be made of a retroreflective material or have a retroreflective strip attached to them.
6. Flags **shall** be a minimum of 18" x 18" in size, with a minimum 30" staff.