



Wisconsin Department of Transportation  
Division of Transportation System Development

# Utility Coordination Newsletter

## 3D Utility Locate Pilot Program on STH 50

WisDOT is undertaking a 3D utility locate pilot project on STH 50 in Kenosha County. The pilot project contains initiatives to investigate and enhance accuracy in the verification of utility installations.

This project required utilities to provide 3D designs with plan sets referencing the design centerline stationing, which were then entered into a clash detection program to identify potential utility conflicts. Proposed utility routes are then required to be staked in the field and reviewed by WisDOT. Any utility design or field changes must be sent back to WisDOT for review and approval, and run through the clash detection program again.

All utility installations will be surveyed and documented by WisDOT, using GPS technology. WisDOT has utilized Colorado DOT standards as a model to document all utility placements onsite. There are three basic methods of documenting underground utilities:

1. Direct observation – This method takes place at bore pits, utility locates holes, and open trench locations. The GPS is placed directly on the utility

### Articles Included

- 3D Utility Locate Pilot Program on STH 50
- Xcel Energy pivots amid pandemic to support small businesses
- Utility Coordination Tools
- Local Program Updates
- Norman's Corner
- Staff Updates
- Release of Rights Flowcharts
- TUMS

- and the depth and location is recorded.
2. Indirect observation – This method is by far the most common, and involves the boring contractor marking the depth of the bore head along the length of boring operation. The at grade elevation is recorded, along with location and depth of the bore head. The actual location is then computed.
  3. Auger-type installation -- While a facility is augured, a direct measurement is recorded at the bore and at the receiving pit to then calculate the auger's position. This is similar to the indirect observation method; however, when auguring, the facility is installed in a straight line allowing for this direct interpolation.

Most utility installations use an indirect method, and this pilot project is working to verify the accuracy of this method. JNI Engineering, a consultant for WisDOT, is recording depths and locations along the bore path, and is further comparing the field survey information to bore logs and data provided directly from We Energies for their gas facility installations on this project. We Energies has utilized GPS technology for the location of newly installed gas main for the purpose of asset management, GIS mapping of their facilities, and to satisfy tracking and traceability requirements for regulating bodies. Up until this point, this information has not been used for electronic facility mapping. We Energies has agreed to provide their bore logs to further future efforts of 3D utility mapping for feasibility and cost effectiveness, while still gaining an appropriate level of accuracy. You can find additional information on We Energies processes by contacting Jamie York at [Jamie.York@we-energies.com](mailto:Jamie.York@we-energies.com).

All the data obtained by this project will be used by the WisDOT Bureau of Technical Services (BTS) in a research contract involving 3D utility survey. There have been joint coordination efforts between the region and BTS on this pilot project. The goals of this pilot project, and the broader 3D contract, are to determine what methods of installation and data collection are feasible and best suited to achieve appropriate accuracy levels, and to ensure all the data is meaningful and usable.

WisDOT would like to thank We Energies for their assistance and ask if other companies have similar data, bore logs, or information they would be willing to share, please contact Abby Williamson at [abby.williamson@dot.wi.gov](mailto:abby.williamson@dot.wi.gov).

UN #10-01

## Xcel Energy pivots amid pandemic to support small businesses

Wisconsin small businesses are the economic backbone for many communities across our state. From the mom-and-pop shop, the local CPA and dog grooming business, to the arts center, coffee shop, yoga studio and beyond, small businesses contribute to a community's identity. But they have been hit especially hard by this pandemic. Xcel Energy is proud to support our small businesses that create local jobs, strengthen our communities and fuel our economy (or as they reopen and restructure how they run).

Through free virtual energy visits, rebates and resources, Xcel Energy is helping Wisconsin small and medium-sized businesses discover no- and low-cost ways to save energy and money, now and in the future. [Learn more.](#)

UN #10-02



## Utility Coordination Tools



As a reminder **Utility Coordination Tools** exist on WisDOT's webpage for Utility Coordination. It was designed for WisDOT and consultant staff who perform utility coordination. The contents were developed to act as resources to help people remember all the required steps and ultimately improve utility coordination.

This is where the information is located: [Utility Coordination Tools](#)

Questions can be submitted to [DOTDTSDCOUtilityCoordination@dot.wi.gov](mailto:DOTDTSDCOUtilityCoordination@dot.wi.gov)

UN #10-03

## Local Program Updates

Local Program Projects have been selected for 2020-2025. Find the project locations within the four programs listed below.

[STP – Rural approved projects 2020-2025](#)

[STP – Urban approved projects less than 200k 2020-2025](#)

[STP – Urban approved projects more than 200k 2020-2025](#)

[Local Bridge Program 2020-2025](#)

In addition WisDOT has been performing a Low Risk Pilot Program.

Information on this program can be found [here](#).

Phase 1 was completed in 2020 and included Low Risk Pilot Projects. Go to the [Low Risk Bridge Program - Low Risk Pilot Projects Phase I](#)

2021 is beginning Phase 2.

Find more information here:

[Local Program - Low Risk Pilot Phase II](#)

UN #10-04



## Norman's Corner



Happy New Year 2021! Though 2020 had its challenges, I hope we can bring back to the office with us the effective practices we learned from working at home (Teams/virtual meetings can work!) and use it to our advantage.

There has been a large influx of companies with staffing changes, merging companies, spin offs and incorporations. In the coming months we hope to re-establish contacts with our utility coordination partners so we may be reaching out to you for updated contact information.

The BTS Utility Unit is very interested in assisting new staff in learning more about the WisDOT Utility Coordination process, or a refresher, a topic of interest, and ways we can collaborate or suggestions for improvement. We would like to extend our hand to both our internal and external partners so that we can effectively work together. Please reach out to us if you would like to meet.

If you have a question or comment, please send it to:

[DOTDTSDCOUtilityCoordination@dot.wi.gov](mailto:DOTDTSDCOUtilityCoordination@dot.wi.gov)

Thanks,  
**Norman Pawelczyk**  
Technical Services Chief  
Division of Transportation Systems Development  
Bureau of Technical Services  
4822 Madison Yards Way  
Madison, WI 53705

**Office:** 608-266-2362  
**Cell:** 608-516-6355

UN #10-05

## Staff Updates

---

## Northwest Region

---

Rick Reiter of Ayres Associates, Inc., has joined the Northwest Region as a Utility Coordinator Consultant.

He has worked for Ayres since 4/1/2019. "Insert April Fools joke", states Rick. "Before that I worked for AT&T for almost 19 years in various roles. I was a design engineer, a construction manager, and a high speed circuit design engineer. I was also a project manager, and SME (subject matter expert) on some design principles."



Rick started with WisDOT on July 15<sup>th</sup>, 2020. He has enjoyed working from home, but says, "probably not as much as my dog enjoys it!" In his free time he enjoys golfing.

---



Megan Beer-Pemberton of Corre Inc. has also joined the Northwest Region as a Utility Coordinator Consultant.

Megan and her husband live in Eau Claire with their children, Eleanore (Ellie), 3.5 years old, Theodore (Theo), 10 months, and their dogs Graham, a mini-schnauzer, and newly added Max, who is a mini-schnauzer/Cairn Terrier mix.

She not only assists with utility coordination but is also helping to review and approve utility permits. When Megan is not working in utilities, she is working in the Real Estate and Environmental sections of CORRE, Inc., where she has been for 6.5 years. In the real estate section she works as an acquisition/relocation agent, and in environmental she is one of three historians completing Section 106 compliance documentation.

In her free time, Megan loves spending time with her family, friends, traveling within the US and abroad (though COVID-19 has obviously changed that in many ways), cooking (the picture of Ellie and Megan was while baking over Christmas), and spending time outside: whether it's working in the garden, going for a run or walk, hunting or fishing.



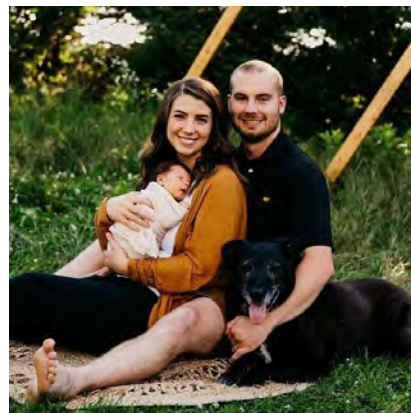
The Northwest Region has also welcomed Brad Becker of CBS Squared, Inc., in the position of Utility Coordinator Consultant.

Brad started working as a utility coordinator consultant during the summer of 2020. He graduated from the University of Wisconsin-Platteville in 2013 with a degree in Civil Engineering. Since graduation, he has worked for CBS Squared, Inc. and been involved in a wide variety of transportation projects.



As a utility coordinator consultant, Brad really enjoys learning new things and working with the other utility team members.

Brad and his wife love spending time with their 6-month old son, Bennett, and their German Shepard mix dog, Buddy. Other than hanging out with friends and family, he likes to be outdoors as much as possible, work on different projects around the house, and play and watch basically any sports.



## BTS Utility Unit

This newsletter is published by the WisDOT BTS Utility Unit and provides updates pertaining to WisDOT utility coordination and related WisDOT programs. It has been on a short hiatus since last summer. Hopefully the newsletter will entertain and inform you on matters important to utility coordination.

Recently, Gayle Lindenberg, P.E., has taken over writing and coordination of the Utility Newsletter. She is a BTS Utility Coordinator Consultant from Robert E. Lee & Associates, Inc.(REL). She has been with REL over 20 years. Beginning in 2012, she spent three years as an Utility Coordinator Consultant in the Northeast Region office. Afterwards Gayle joined the BTS Utility Unit, and has been there since. You will see her name come across the monthly Utility Let Review emails.



Gayle and her husband (and now co-worker thanks to COVID-19) Travis, live in Kimberly with their two boys, Connor, 14, and Reid, 12, and an adorable mutt, Murphy. Connor keeps them busy with karate, soccer and his entrepreneurial endeavors; while Reid loves football, hockey and lacrosse. When not working or attending sporting events, she plays volleyball and scrapbooks.

UN #10-06

## Release of Rights Flowcharts (reminder)

Release of rights documents are used in the process to acquire utility land rights that exist on lands being acquired for a highway. This provides WisDOT or the municipality with clear title and ownership of the highway. The appropriate document(s) to use can depend on multiple factors including the type of land acquisition, the type of land interest held by the utility company or municipality, and the location of the existing and proposed utility facilities. These factors, along with certain statutory and policy requirements, play a role in determining just compensation for the utility land rights.

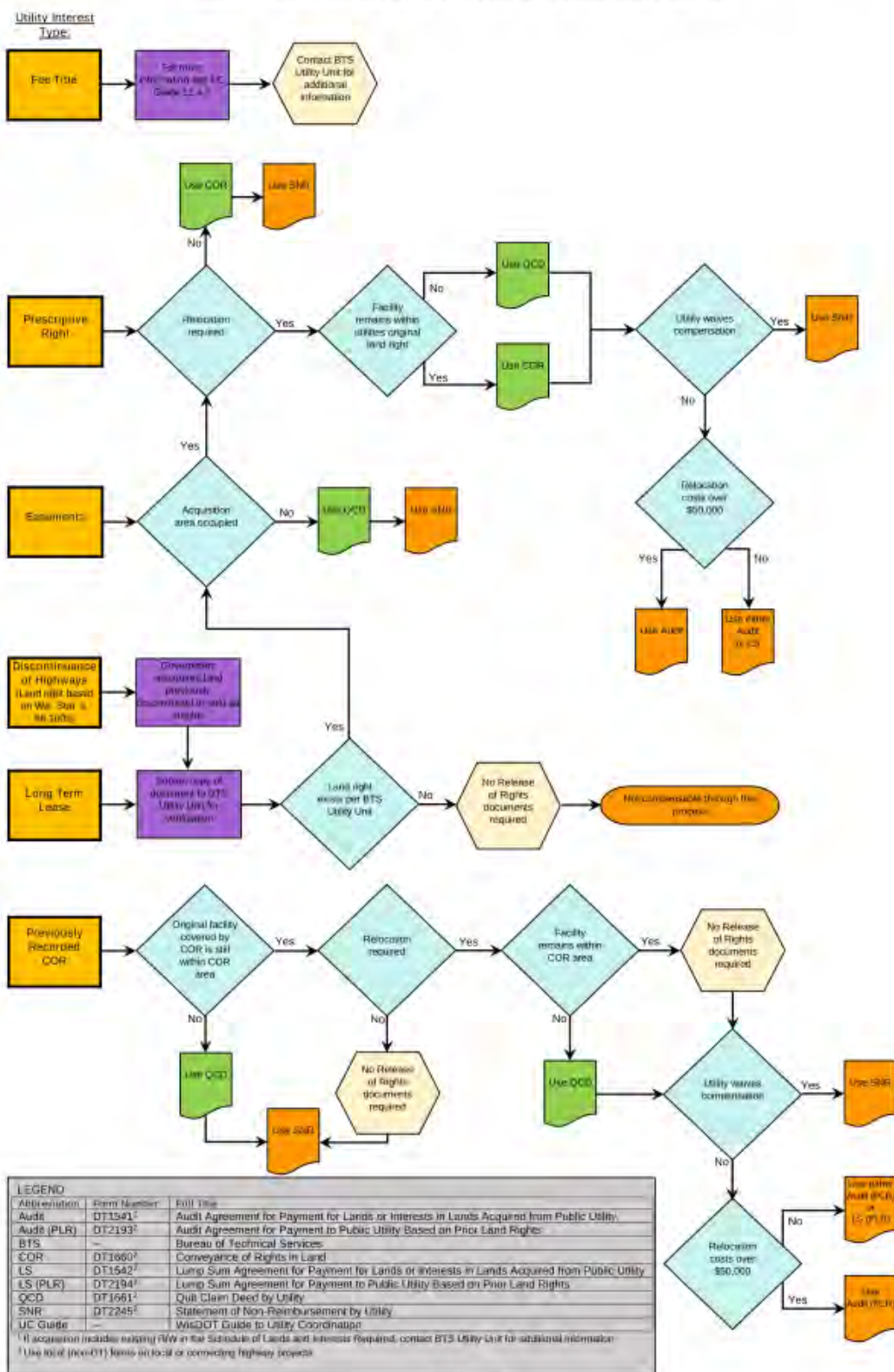
Due to the complexities involved, the BTS Utility Unit developed flowcharts to guide utility coordinators, consultants, utility companies, and municipalities through this process. Both flowcharts may be applicable on any given project. Users can apply these flowcharts separately for each utility company or municipality on every land parcel to ensure that the proper documentation is used.

The flowcharts are as follows:

- [Process to Release Utility Land Rights When WisDOT Acquires Land in Fee](#)
  - This flowchart should be used for utility interests on land parcels that WisDOT is acquiring in fee simple. It details the variety of utility land interests that may exist and the appropriate document(s) to use.
- [Process to Release Utility Land Rights When WisDOT Acquires Easements](#)
  - Oftentimes, WisDOT will acquire an easement (highway easement, permanent limited easement or temporary limited easement)

instead of fee simple. This flowchart details the appropriate document(s) to use when easements are being acquired.

### Process to Release Utility Land Rights When WisDOT Acquires<sup>1</sup> Land in Fee (Follow this flowchart step by step for each land parcel being acquired)





## Transportation Utility Management System (TUMS) Updates

The TUMS Development Team is working on updates to TUMS and plan to add these in our Production environment at the end of March. Some of the planned changes and additions are:

- The import of PeopleSoft supplier ID, supplier name and purchase order number. This information will auto-fill onto the utility change order form to assist in expediting the process.
- The addition of non-Trans 220 forms. Initial forms being added are non-Trans 220 versions of the improvement notice, project plan transmittal, and utility worksheet. This will assist in improving communication and coordination.
- A new report that identifies, by utility company, when system maps or work plans are submitted in relation to their due date.
- The addition of a new violation letter. The purpose of this letter is to remind utility companies of the following:
  - Their work plan is past due, they are in violation of statutes and/or administrative rules, and they may incur damages payable to WisDOT if their documents are not submitted immediately.
  - Additional items that are missing such as release of rights documents or system maps.
  - If WisDOT has sent multiple requests to known utility contacts within the utility company and have been unable to get a response, WisDOT may submit this letter to the utility company's upper management.

Wishing you all a productive, happy and healthy winter!

Lynn Fiore,  
Business Area Expert  
DOT-DTSD-BTS-Utilities & Access

UN #10-08



To subscribe, submit questions, suggestions, comments or potential newsletter articles, please send an email to [DOTDTSDCOUtilityCoordination@dot.wi.gov](mailto:DOTDTSDCOUtilityCoordination@dot.wi.gov). BTS/U will review each submission prior to publication.

This bulletin has been developed to provide updates, clarifications, job aids and news pertaining to WisDOT utility coordination and related WisDOT programs, policy and services. Information published in this bulletin will be of interest to those who work closely with utility coordination.