

Wisconsin Department of Transportation

March 2, 2015

Division of Transportation Systems Development

Bureau of Project Development
4802 Sheboygan Avenue, Rm 601
P O Box 7916
Madison, WI 53707-7916

Telephone: (608) 266-1631
Facsimile (FAX): (608) 266-8459

NOTICE TO ALL CONTRACTORS:

Proposal #07: 5720-00-73, WISC 2015-117
Town of Willow Springs, Ferndale Road
Pecatonica River Bridge P-33-0144
Town Road
Lafayette County

Letting of March 10, 2015

This is Addendum No. 1, which provides for the following:

Plan Sheets

Revised Plan Sheets	
Plan Sheet	Plan Sheet Title (brief description of changes to sheet)
41	Corrected dimensions.
44	Added additional deflection information.

Plan Sheets

The following 8½ x 11-inch sheets are attached and made part of the plans for this proposal:
Revised: 41, 44

The responsibility for notifying potential subcontractors and suppliers of these changes remains with the prime contractor.

Sincerely,

Mike Coleman

Proposal Development Specialist
Proposal Management Section

END OF ADDENDUM

**BILL OF BARS
FOUR WINGS SHOWN**

BAR MARK	NO.	LENGTH	BENT	COAT	SERIES	LOCATION
A401	32	7-0"	X	X	*	WINGS - VERT. - F.F. & B.F.
A402	28	3-8"	X	X	*	WINGS - HORIZ. - F.F. & B.F.
A403	32	6-3"	X	X	*	WINGS - HORIZ. - F.F. & B.F.
A404	8	3-6"	X	X	*	WINGS - HORIZ. - F.F. & B.F.
A405	8	6-5"	X	X	*	WINGS - HORIZ. - TOP
A406	24	5-5"	X	X	*	WINGS - HORIZ.

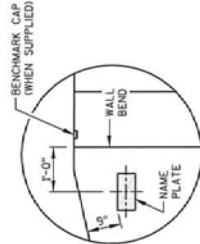
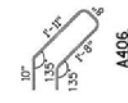
NOTES: THE FIRST DIGIT OF A BAR MARK SIGNIFIES THE BAR SIZE.
DIMENSIONS IN BENDING DETAILS ARE OUT TO OUT OF BAR.
* LENGTH SHOWN IS AN AVERAGE LENGTH ONLY. SEE BAR SERIES TABLE FOR ACTUAL LENGTHS.

STATE PROJECT NUMBER
5720-00-73

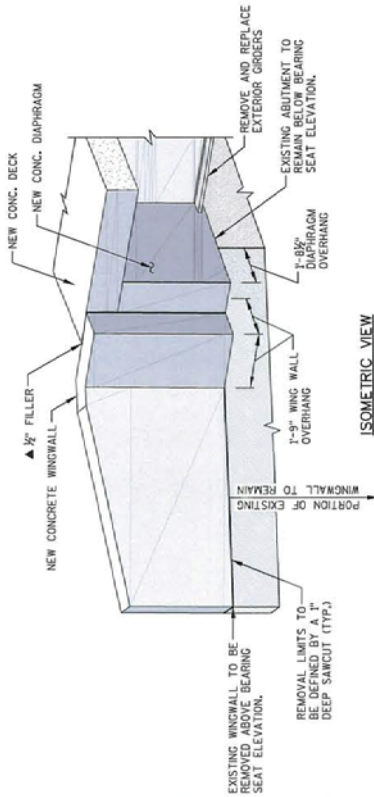
BAR SERIES TABLE

BAR MARK	NO. REVD.	LENGTH
A401	4	6-8 TO 9-0

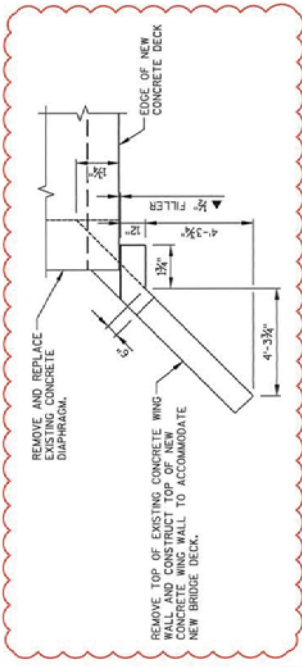
BUNDLE AND TAG EACH SERIES SEPARATELY.



**NAME PLATE AND
BENCHMARK CAP DETAIL**



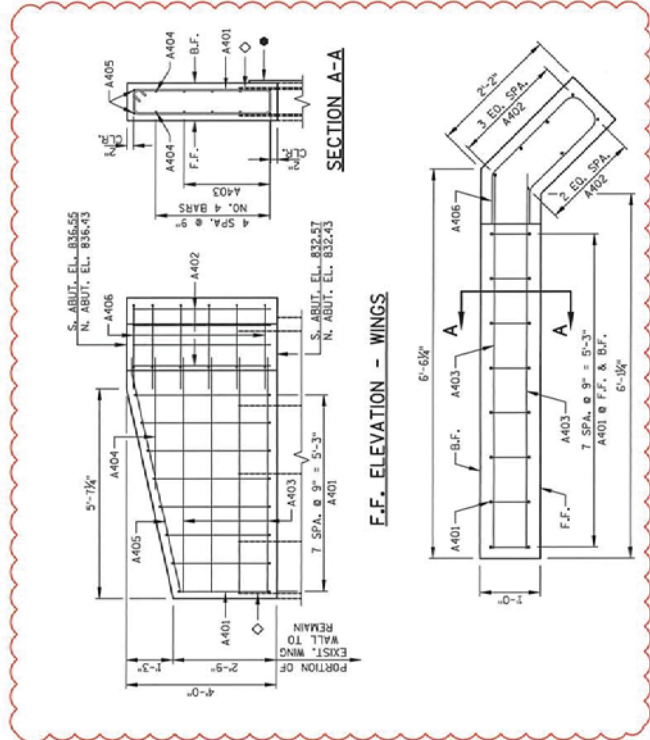
ISOMETRIC VIEW



PLAN VIEW

WINGWALL-ADJUSTMENT DETAIL

WING 1 SHOWN, OTHER WINGS SIMILAR



F.F. ELEVATION - WINGS

PLAN VIEW - WINGS

NOTES

SEE THIS SHEET FOR BILL OF BARS.

LEGEND

- ◇ SAVE EXISTING VERTICAL BAR STEEL REINFORCEMENT AT LOCATIONS OF WING WALL REMOVAL AND EXTEND 12" MIN. INTO NEW WORK.
- 18" RUBBERIZED MEMBRANE WATERPROOFING. (HORIZONTAL)
- ▲ 3" FILLER EXTEND AS SHOWN. SEAL ALL EXPOSED HORIZ. & VERT. SURFACES OF FILLER WITH NON-STAINING GRAY, NON-BITUMINOUS JOINT SEALER. (1" DEEP & HOLD 1/2" BELOW SURFACE OF CONCRETE)

Addendum No. 1
ID 5720-00-73
Revised Sheet 41
March 2, 2015



2/27/15

William C. Dehn

NO.	DATE	REVISION	BY
1	2-27-15	DIMENSION CORRECTIONS	PTB

STATE OF WISCONSIN
DEPARTMENT OF TRANSPORTATION
STRUCTURE P-33-0144
DRAWN BY: []
CHECKED BY: []
PTB

