

# Wisconsin Department of Transportation

March 2, 2015

## Division of Transportation Systems Development

Bureau of Project Development  
4802 Sheboygan Avenue, Rm 601  
P O Box 7916  
Madison, WI 53707-7916

Telephone: (608) 266-1631  
Facsimile (FAX): (608) 266-8459

### NOTICE TO ALL CONTRACTORS:

**Proposal #17: 2949-00-70, WISC 2015 127  
CTH CW (Mapleton Road)  
Bridge over Ashippun River  
(P-67-0046)  
CTH CW  
Waukesha County**

**3947-05-71, WISC 2015 155  
CTH CW  
County Line to 1700-Foot East of  
Amber Lane  
CTH CW  
Waukesha County**

### Letting of March 10, 2015

This is Addendum No. 01, which provides for the following:

#### Plan Sheets

Revised Plan Sheets	
Plan Sheet	Plan Sheet Title (brief description of changes to sheet)
85	Labels in 'Top of Deck Elevations' Table on Structure Sheet 13 of 14 are switched.

#### Plan Sheets

The following 8½ x 11-inch sheets are attached and made part of the plans for this proposal:  
Revised: Sheet 85.

The responsibility for notifying potential subcontractors and suppliers of these changes remains with the prime contractor.

Sincerely,

*Mike Coleman*

Proposal Development Specialist  
Proposal Management Section

END OF ADDENDUM

Addendum No. 1  
 ID 2949-00-70  
 Revised Sheet 85  
 March 2, 2015

*William C. Decker*  
 2/24/15

NO.	DATE	REVISION	BY
2/15		REVISE LOCATION LABELS	AYRES

STATE OF WISCONSIN  
 DEPARTMENT OF TRANSPORTATION

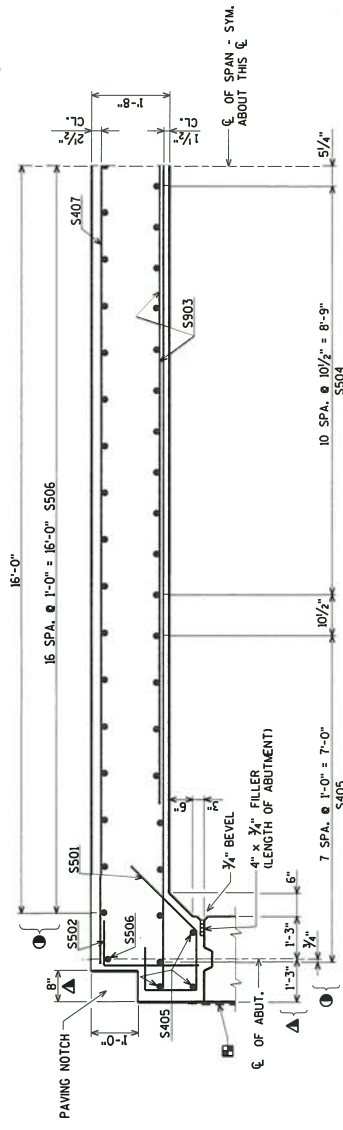
STRUCTURE B-67-346

BRIDGE CLS  
 PLANS  
 JCK

SHEET 13 OF 14

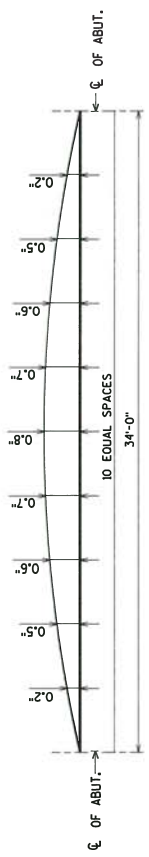
85

ORIGINAL PLANS PREPARED BY  
**AVRES ASSOCIATES**  
 3433 Oakwood Hills Parkway  
 Eau Claire, WI 54701  
 www.avresassociates.com



PART LONGITUDINAL SECTION

- ▣ 18" RUBBERIZED MEMBRANE WATERPROOFING
- DIMENSIONS MEASURED ALONG TANGENT LINE.
- △ DIMENSIONS MEASURED NORMAL TO C. OF SUBSTRUCTURE.



CAMBER DIAGRAM

CAMBER SPANS AS SHOWN TO PROVIDE FOR DEAD LOAD DEFLECTION & FUTURE CREEP. CAMBER DOES NOT INCLUDE ALLOWANCE FOR FORM SETTLEMENT.  
 PRIOR TO RELEASING SLAB FALSEWORK, TAKE TOP OF SLAB ELEVATIONS AT THE C. OF ABUTMENTS AND 5/10 POINTS TO VERIFY CAMBER. TAKE ELEVATIONS ALONG EDGE OF SLAB AND TANGENT LINE.

TOP OF DECK ELEVATIONS

LOCATION	C. OF W. ABUT.	0.1	0.2	0.3	0.4	0.5	0.6	0.7	0.8	0.9	C. OF E. ABUT.
<b>N. EDGE OF SLAB</b>	850.22	850.23	850.24	850.26	850.27	850.29	850.31	850.33	850.36	850.38	850.41
<b>TANGENT LINE</b>	851.51	851.51	851.52	851.53	851.54	851.55	851.56	851.57	851.59	851.61	851.63
<b>S. EDGE OF SLAB</b>	852.52	852.52	852.52	852.53	852.53	852.54	852.54	852.55	852.57	852.58	852.59

ELEVATIONS SHOWN ARE FINISHED DECK AND DO NOT INCLUDE ALLOWANCES OF DEAD LOAD DEFLECTION AND FUTURE CREEP.