



# Wisconsin Department of Transportation

April 8, 2015

## Division of Transportation Systems Development

Bureau of Project Development  
4802 Sheboygan Avenue, Rm 601  
P O Box 7916  
Madison, WI 53707-7916

### NOTICE TO ALL CONTRACTORS:

Telephone: (608) 266-1631  
Facsimile (FAX): (608) 266-8459

**Proposal #03: 1107-00-74, WISC 2015 175**  
**Allenton – Fond Du Lac**  
**South County Line to North County Line**  
**USH 41**  
**Dodge County**

### Letting of April 14, 2015

This is Addendum No. 2, which provides for the following:

#### Schedule of Items

Revised Bid Item Quantities					
Bid Item	Item Description	Unit	Old Quantity	Revised Quantity	Proposal Total
603.1142	Concrete Barrier Type S42	LF	700	628	628

Added Bid Item Quantities					
Bid Item	Item Description	Unit	Old Quantity	Revised Quantity	Proposal Total
603.1442	Concrete Barrier Type S42C	LF	0	72	72

#### Plan Sheets

Revised Plan Sheets	
Plan Sheet	Plan Sheet Title (brief description of changes to sheet)
123	Concrete Barrier Type S42 and S42C Miscellaneous Quantities

Added Plan Sheets	
Plan Sheet	Plan Sheet Title (brief description of changes to sheet)
19A	Salt Shed Contour Detail

#### Schedule of Items

Attached, dated April 8, 2015 is the revised Schedule of Items Pages 5 and 15.

#### Plan Sheets

The following 8½ x 11-inch sheets are attached and made part of the plans for this proposal:

Revised: 116

Added: 19A

The responsibility for notifying potential subcontractors and suppliers of these changes remains with the prime contractor.

Sincerely,

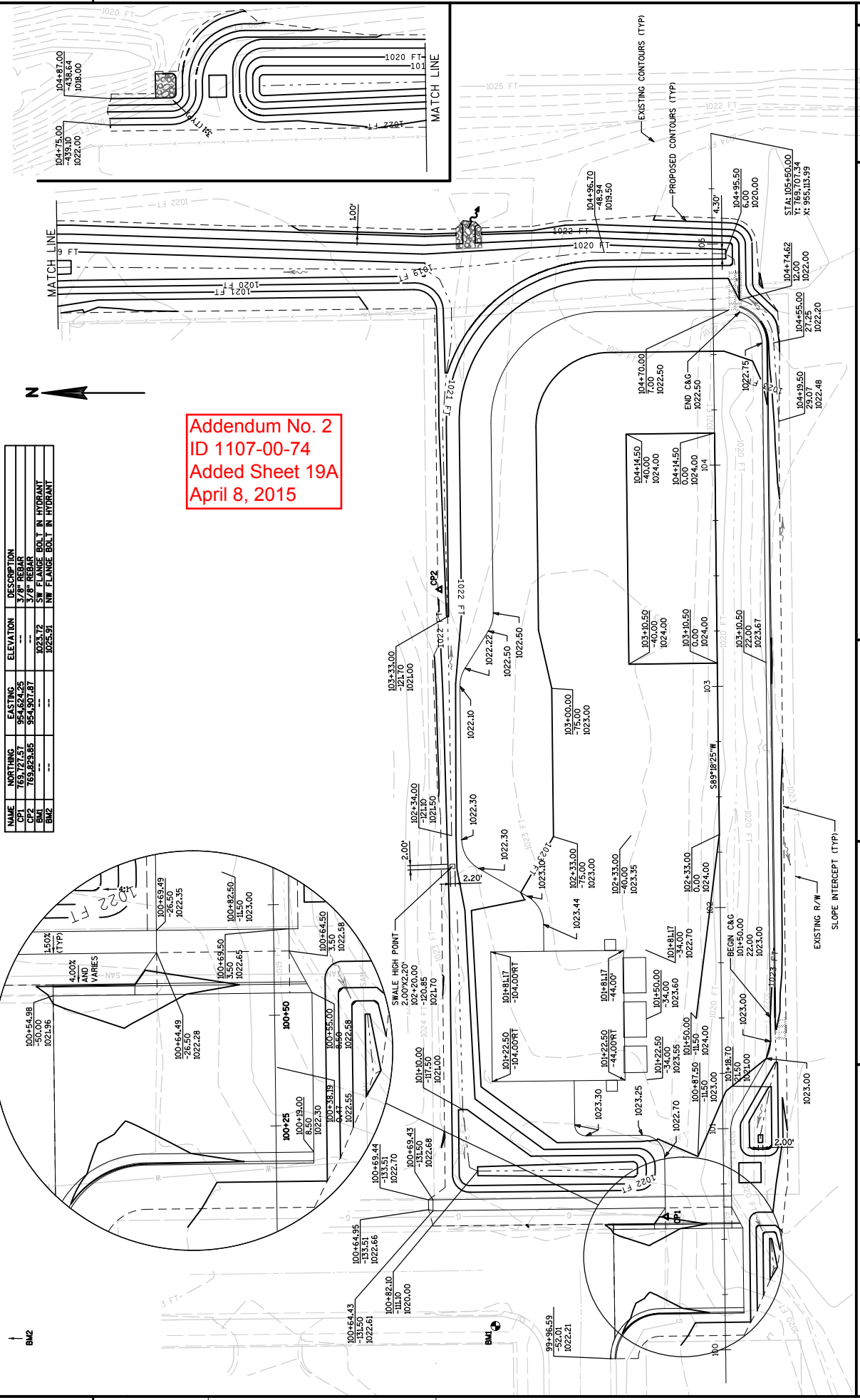
*Mike Coleman*

Proposal Development Specialist  
Proposal Management Section

END OF ADDENDUM

NAME	NORTHING	EASTING	ELEVATION	DESCRIPTION
CP1	769.72757	954.62425	---	3/8" REBAR
CP2	769.82585	954.50787	---	3/8" REBAR
BNI	---	---	1023.72	SW FLANGE BOLT IN HYDRANT
BNI	---	---	1025.51	NW FLANGE BOLT IN HYDRANT

Addendum No. 2  
 ID 1107-00-74  
 Added Sheet 19A  
 April 8, 2015



NAME	NORTHING	EASTING	ELEVATION	DESCRIPTION
CP1	769.72757	954.62425	---	3/8" REBAR
CP2	769.82585	954.50787	---	3/8" REBAR
BNI	---	---	1023.72	SW FLANGE BOLT IN HYDRANT
BNI	---	---	1025.51	NW FLANGE BOLT IN HYDRANT

PROJECT NO: 1107-00-74  
 COUNTY: DODGE  
 HWY: USH 41  
 SHEET 19A  
 SALT SHED CONTOUR DETAIL  
 PLOT BY: bwe@lgand  
 PLOT DATE: 4/3/2015  
 PLOT SCALE: 1:161.8182  
 WISDOT/CADD SHEET 42

Addendum No. 2  
 ID 1107-00-74  
 Revised sheet 123  
 April 8, 2015

LOCATION	CATEGORY	QUANTITY	UNIT	ITEM	DESCRIPTION	QUANTITY	UNIT	ITEM	DESCRIPTION	QUANTITY	UNIT	ITEM	DESCRIPTION	QUANTITY	UNIT
ROADWAY															
1213+03 TO 1219+03 RT	0010	-		603.1442	CONCRETE BARRIER TYPE 542C	-		614.2300	STEEL THRIE BEAM	-		614.2500	MGS TRANSITION	-	
1227+00 TO 1242+03 RT	0010	-		603.1442	CONCRETE BARRIER TYPE 542C	-		614.2300	STEEL THRIE BEAM	-		614.2500	MGS TRANSITION	-	
1252+53 TO 1254+53 RT	0010	-		603.1442	CONCRETE BARRIER TYPE 542C	-		614.2300	STEEL THRIE BEAM	-		614.2500	MGS TRANSITION	-	
1280+53 TO 1281+00 RT	0010	-		603.1442	CONCRETE BARRIER TYPE 542C	-		614.2300	STEEL THRIE BEAM	-		614.2500	MGS TRANSITION	-	
1281+00 TO 1288+00 RT	0010	628		603.1442	CONCRETE BARRIER TYPE 542C	72		614.2300	STEEL THRIE BEAM	39		614.2500	MGS TRANSITION	-	
1307+53 TO 1308+53 RT	0020	-		603.1442	CONCRETE BARRIER TYPE 542C	-		614.2300	STEEL THRIE BEAM	-		614.2500	MGS TRANSITION	-	
1337+53 TO 1340+03 RT	0010	-		603.1442	CONCRETE BARRIER TYPE 542C	-		614.2300	STEEL THRIE BEAM	-		614.2500	MGS TRANSITION	-	
1388+53 TO 1391+03 RT	0010	-		603.1442	CONCRETE BARRIER TYPE 542C	-		614.2300	STEEL THRIE BEAM	-		614.2500	MGS TRANSITION	-	
1212+50 TO 1219+00 LT	0010	-		603.1442	CONCRETE BARRIER TYPE 542C	-		614.2300	STEEL THRIE BEAM	-		614.2500	MGS TRANSITION	-	
1233+00 TO 1243+00 LT	0020	-		603.1442	CONCRETE BARRIER TYPE 542C	-		614.2300	STEEL THRIE BEAM	-		614.2500	MGS TRANSITION	-	
1252+50 TO 1256+00 LT	0010	-		603.1442	CONCRETE BARRIER TYPE 542C	-		614.2300	STEEL THRIE BEAM	-		614.2500	MGS TRANSITION	-	
1270+00 TO 1284+50 LT	0010	-		603.1442	CONCRETE BARRIER TYPE 542C	-		614.2300	STEEL THRIE BEAM	-		614.2500	MGS TRANSITION	-	
1307+00 TO 1311+50 LT	0020	-		603.1442	CONCRETE BARRIER TYPE 542C	-		614.2300	STEEL THRIE BEAM	-		614.2500	MGS TRANSITION	-	
1383+00 TO 1391+00 LT	0010	-		603.1442	CONCRETE BARRIER TYPE 542C	-		614.2300	STEEL THRIE BEAM	-		614.2500	MGS TRANSITION	-	
STRUCTURE PROTECTION															
STH 28	MEDIAN	2	150												
S00 ROAD	MEDIAN	2	100												
STH 67	MEDIAN	2	200												
STH 49	MEDIAN	2	200												
MEDIAN															
1168+12 TO 1556+36	0040	-												22	38900
UNDISTRIBUTED	0040	-												2	1000
CATEGORY 0010 SUBTOTAL		628				72		39		5462.5		10		9	
CATEGORY 0020 SUBTOTAL		-				-		-		1550.0		3		3	
CATEGORY 0040 SUBTOTAL		-				-		-		-		-		24	39900
TOTALS		628				72		39		7,012.5		13		12	39,900

MARKERS	CULVERT	END
ITEM 633-5200	MARKERS	CULVERT
CATEGORY 0010	LOCATION	(EA)
1175+37	LT	1
1186+35	LT	1
1213+33	LT	1
1224+31	LT	1
1227+39	LT	1
1227+44	RT	1
1227+85	LT	1
1240+60	LT	1
1240+62	RT	1
1242+30	LT	1
1251+54	LT	1
1257+04	LT	1
1265+40	LT	1
1275+23	RT	1
1275+88	LT	1
1276+34	LT	1
1288+31	LT	1
1296+28	LT	1
1305+07	RT	1
1311+01	LT	1
1311+04	RT	1
1321+23	LT	1
1339+24	RT	1
1339+27	LT	1
1345+20	LT	1
1363+18	LT	1
1416+31	RT	1
1416+32	LT	1
1430+67	LT	1
SALT SHED		
(CATEGORY 0030)		1
CATEGORY 0010 SUBTOTAL		29
CATEGORY 0030 SUBTOTAL		1
TOTALS		30

HAUL ROAD RESTORATION
ITEM 618-0100
MAINTENANCE AND REPAIR OF HAUL ROADS (1107-00-74) (EACH)
LOCATION
PROJECT (CATEGORY 0010)
TOTALS
1
1

## SCHEDULE OF ITEMS

REVISED:

CONTRACT:  
20150414003PROJECT(S):  
1107-00-74FEDERAL ID(S):  
WISC 2015175

CONTRACTOR : \_\_\_\_\_

LINE NO	ITEM DESCRIPTION	APPROX. QUANTITY AND UNITS	UNIT PRICE		BID AMOUNT	
			DOLLARS	CTS	DOLLARS	CTS
0440	522.1018 Apron Endwalls for Culvert Pipe Reinforced Concrete 18-Inch	EACH 1.000	.		.	
0450	522.1024 Apron Endwalls for Culvert Pipe Reinforced Concrete 24-Inch	EACH 11.000	.		.	
0460	522.1036 Apron Endwalls for Culvert Pipe Reinforced Concrete 36-Inch	EACH 3.000	.		.	
0470	522.1048 Apron Endwalls for Culvert Pipe Reinforced Concrete 48-Inch	EACH 2.000	.		.	
0480	601.0411 Concrete Curb & Gutter 30-Inch Type D	LF 455.000	.		.	
0490	602.0405 Concrete Sidewalk 4-Inch	SF 590.000	.		.	
0500	603.1142 Concrete Barrier Type S42	LF 628.000	.		.	
0510	606.0200 Riprap Medium	CY 20.000	.		.	
0520	611.0420 Reconstructing Manholes	EACH 2.000	.		.	
0530	611.0430 Reconstructing Inlets	EACH 3.000	.		.	

SCHEDULE OF ITEMS

REVISED:

CONTRACT:  
20150414003

PROJECT(S):  
1107-00-74

FEDERAL ID(S):  
WISC 2015175

CONTRACTOR : \_\_\_\_\_

LINE NO	ITEM DESCRIPTION	APPROX. QUANTITY AND UNITS	UNIT PRICE		BID AMOUNT	
			DOLLARS	CTS	DOLLARS	CTS
1500	SPV.0105 Special 04. Grading Salt Storage Site	LUMP	LUMP			.
1510	SPV.0105 Special 05. Brine Storage And Dispensing System	LUMP	LUMP			.
1520	SPV.0105 Special 06. Utilities Salt Storage Site	LUMP	LUMP			.
1530	SPV.0180 Special 01. Removing Asphaltic Surface Milling Second Pass	SY	14,700.000			.
1540	603.1442 Concrete Barrier Type S42C	LF	72.000			.
	SECTION 0001 TOTAL					.
	TOTAL BID					.