



Wisconsin Department of Transportation

May 5, 2015

Division of Transportation Systems Development

Bureau of Project Development
 4802 Sheboygan Avenue, Rm 601
 P O Box 7916
 Madison, WI 53707-7916

Telephone: (608) 266-1631
 Facsimile (FAX): (608) 266-8459

NOTICE TO ALL CONTRACTORS:

**Proposal #23: 2070-09-70, WISC 2015 287
 CTH Y
 Intersection with 60th Street
 Local Street
 Milwaukee County**

Letting of May 12, 2015

This is Addendum No. 1, which provides for the following:

Special Provisions

Added Special Provisions	
Article No.	Description
35	Construction Staking Curb Ramps, Item SPV.0060.10
36	Construction Staking Concrete Sidewalk, Item SPV.0090.03

Schedule of Items

Added Bid Item Quantities					
Bid Item	Item Description	Unit	Old Quantity	Revised Quantity	Proposal Total
642.5001	Field Office Type B	EACH		1	1
650.5500	Construction Staking Curb Gutter and Curb & Gutter	LF		900	900
650.8500	Construction Staking Electrical Installations	LS		1	1
650.9910	Construction Staking Supplemental Control	LS		1	1
SPV.0060.10	Construction Staking Curb Ramps	EACH		8	8
SPV.0090.03	Construction Staking Concrete Sidewalk	LF		430	430

Plan Sheets

Revised Plan Sheets	
Plan Sheet	Plan Sheet Title (brief description of changes to sheet)
5	Typical Sections: Revised Lateral Clearance
6	Typical Sections: Revised Lateral Clearance
27	Traffic Signal Plan: Revised Monotube Numbering

Added Plan Sheets	
Plan Sheet	Plan Sheet Title (brief description of why sheet was added)
58A	Miscellaneous Quantities: Added tables for construction staking and field office

The responsibility for notifying potential subcontractors and suppliers of these changes remains with the prime contractor.

Sincerely,

Mike Coleman

Proposal Development Specialist
Proposal Management Section

ADDENDUM NO. 1

2070-09-70

May 5, 2015

Special Provisions

35. Construction Staking Curb Ramps, Item SPV.0060.10.

A Description

This special provision describes furnishing and setting construction stakes or control points, including all calculations required, necessary to establish the horizontal and vertical position of the curb ramps as shown on the plans.

B (Vacant)

C Construction

C.1 General

Obtain or calculate benchmark data, grades, and alignment from data in the plan and verify with the engineer prior to beginning the work.

Obtain approval from the engineer prior to beginning the work for methods of survey and prior to beginning the work. The degree of accuracy used in the survey work shall be consistent with third order, class II. Establish additional benchmarks and control points as necessary or as directed by the engineer. Check plan dimensions, alignment, and elevations for accuracy with existing field conditions. Immediately call to the engineer's attention any errors and apparent discrepancies for correction or interpretation prior to proceeding with the work.

Maintain neat, orderly and complete survey notes and computations used in establishing the lines and grades. Make the survey notes and computations available to the engineer within 24 hours upon request as the work progresses.

C.2 Curb Ramps

Set and maintain as necessary stakes to achieve the required accuracy and to satisfy the contractors' method of operations. Set additional stakes as necessary to establish location and grade along intersecting road radii; and for auxiliary lanes, vertical curves, horizontal curves, and curve transitions. Locate all concrete sidewalk construction stakes to within 0.25 ft. of the true horizontal position and establish the grade elevation to within 0.01 ft. of the true vertical position.

D Measurement

The department will measure Construction Staking Curb Ramps as each intersection quadrant, acceptably completed.

E Payment

The department will pay for measured quantities at the contract unit price under the following bid item:

ITEM NUMBER	DESCRIPTION	UNIT
SPV.0060.10	Construction Staking Curb Ramps	Each

Payment is full compensation for all survey work necessary to locate and set all curb ramp construction stakes to achieve the required accuracy and to satisfy the contractors' method of operations including intersecting road radii, auxiliary lanes, vertical curves, horizontal curves, and curve transitions; for resetting damaged or missing concrete sidewalk construction stakes; and for furnishing all labor, tools, stakes, lath, flags, equipment and incidentals necessary to complete the work.

36. Construction Staking, Concrete Sidewalk, Item SPV.0090.03.

A Description

Work under this item consists of contractor-performed construction staking required to establish the horizontal and vertical position for the concrete sidewalk and to establish the required positions of the pedestrian ramps. Perform all work under this item in accordance with Section 650 of the Standard Specifications. Construction Staking, Concrete Sidewalk includes staking of the pedestrian ramps and includes staking of all median noses.

B Materials

Vacant

C Construction

Set construction stakes or marks at 50-foot intervals, maximum. Set and maintain stakes as necessary to achieve the required accuracy and to support the method of operations. Set additional construction stakes as necessary to establish location and grade of concrete sidewalk, including points of change in alignment grade, along intersecting walks, at pertinent points of the pedestrian ramps, and at the radius points of intersecting walks.

D Measurement

The department will measure Construction Staking Concrete Sidewalk by the linear foot acceptably completed, measured along each sidewalk centerline. The staking of the pedestrian ramps is incidental to the item Construction Staking Concrete Sidewalk and will not be measured. The department will not measure construction staking for base underlying concrete sidewalk.

E Payment

The department will pay for measured quantities at the contract unit price under the following bid item:

ITEM NUMBER	DESCRIPTION	UNIT
SPV.0090.03	Construction Staking Concrete Sidewalk	LF

Payment for Construction Staking Concrete Sidewalk is full compensation for locating and setting all construction stakes; for relocating and resetting damaged or missing construction stakes and will be made in accordance with Section 650 of the Standard Specifications. The staking of the pedestrian ramps is incidental to the item Construction Staking Concrete Sidewalk and will not be paid.

Schedule of Items

Attached, dated May 5, 2015, are the revised Schedule of Items 11 and 12.

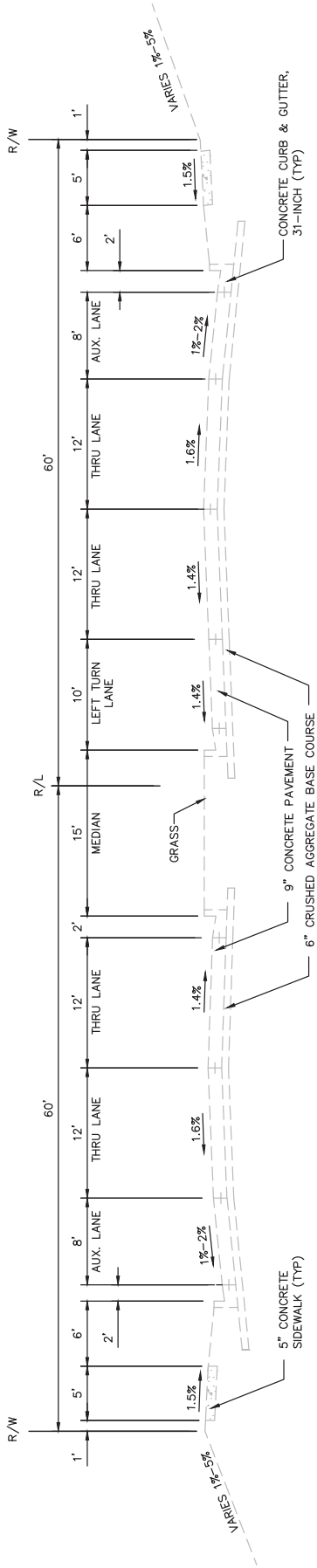
Plan Sheets

The following 8½ x 11-inch sheets are attached and made part of the plans for this proposal:

Revised: 5, 6, and 27.

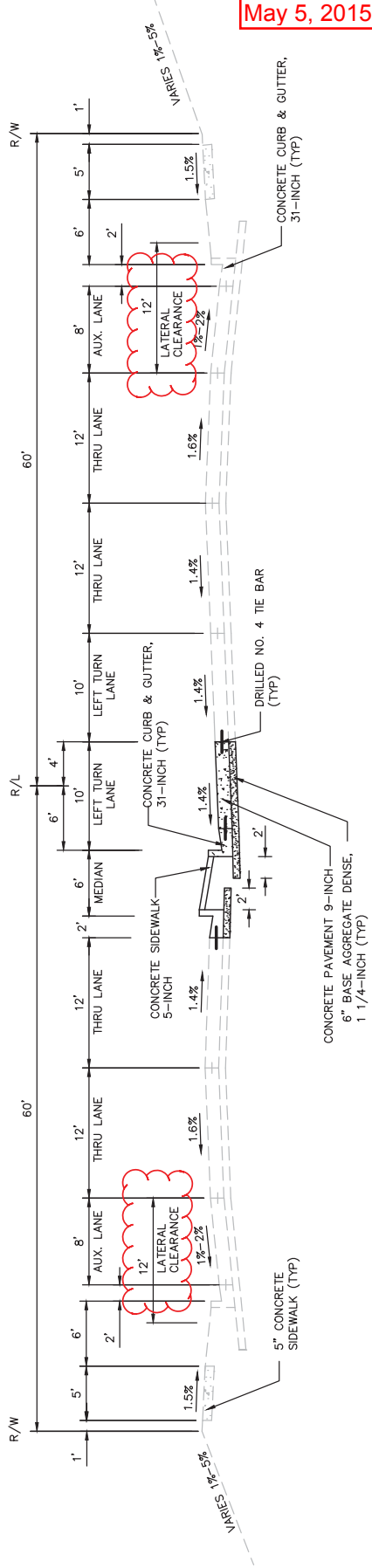
Added: 58A.

END OF ADDENDUM



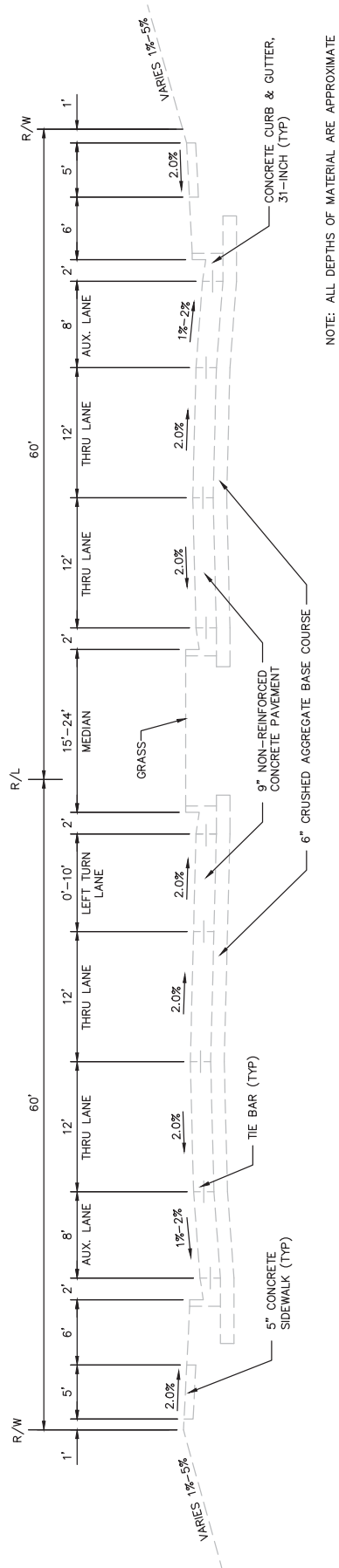
TYPICAL EXISTING SECTION
 W. LAYTON AVE. @ 60TH STREET
 STA 112+62.80 TO STA 114+45.00

NOTE: ALL DEPTHS OF MATERIAL ARE APPROXIMATE



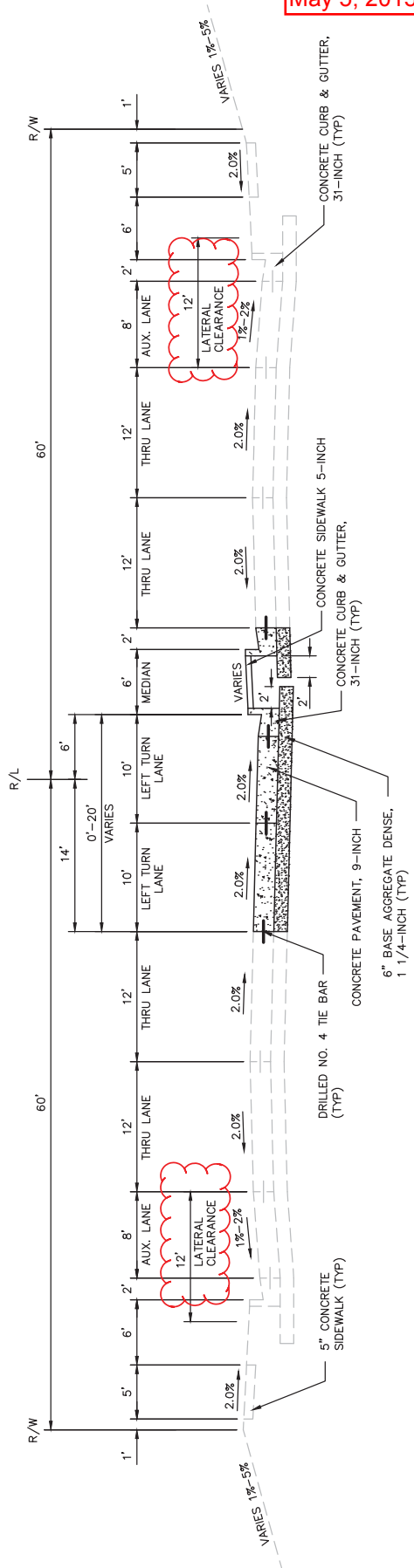
TYPICAL FINISHED SECTION
 W. LAYTON AVE. @ 60TH STREET
 STA 112+62.80 TO STA 114+45.00

Addendum No. 1
 ID 2070-09-70
 Revised Sheet 5
 May 5, 2015



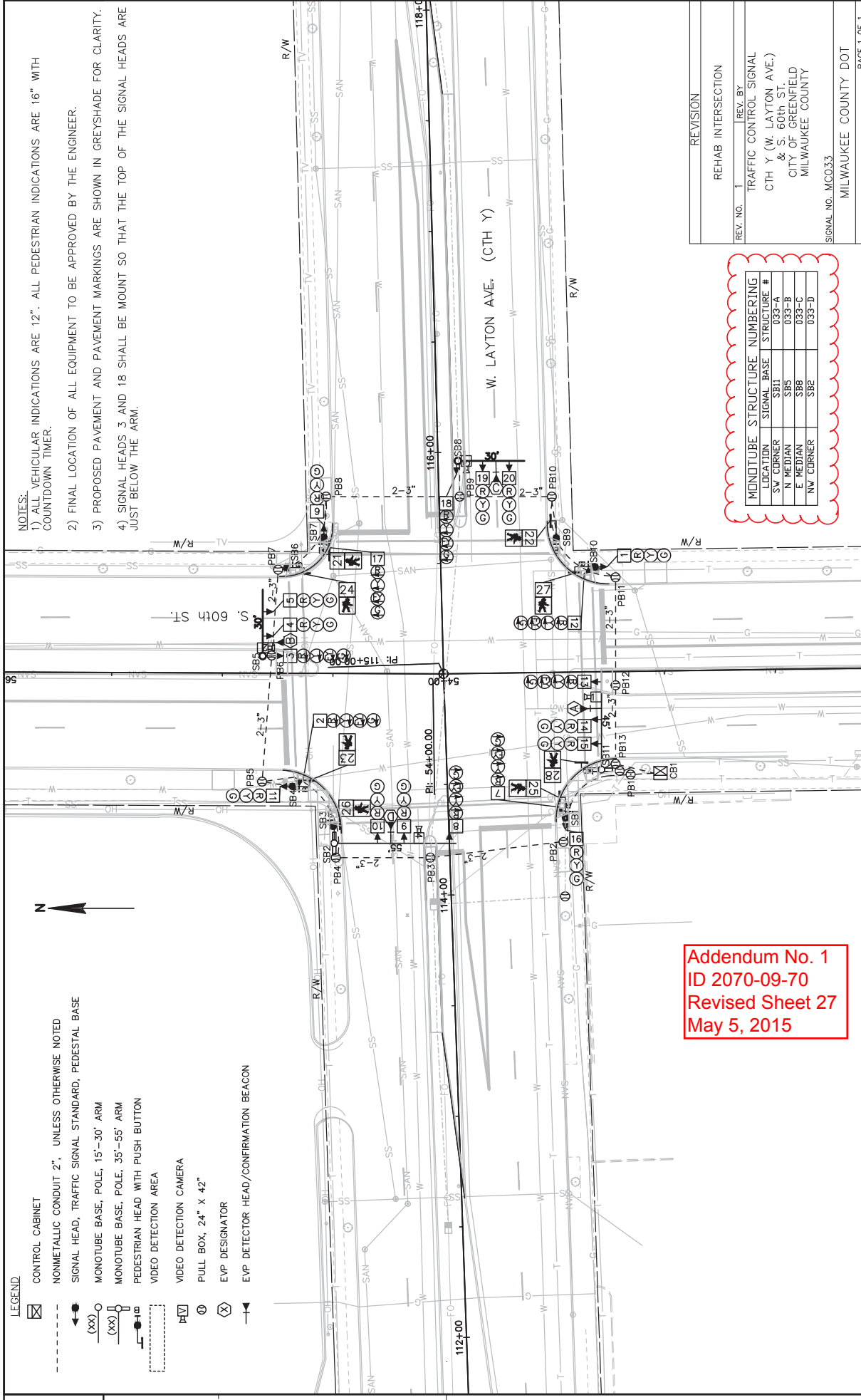
TYPICAL EXISTING SECTION
 W. LAYTON AVE. @ 60TH STREET
 STA 115+59.60 TO STA 119+76.75

NOTE: ALL DEPTHS OF MATERIAL ARE APPROXIMATE



TYPICAL FINISHED SECTION
 W. LAYTON AVE. @ 60TH STREET
 STA 115+59.60 TO STA 119+76.75

Addendum No. 1
 ID 2070-09-70
 Revised Sheet 6
 May 5, 2015



NOTES:

- 1) ALL VEHICULAR INDICATIONS ARE 12". ALL PEDESTRIAN INDICATIONS ARE 16" WITH COUNTDOWN TIMER.
- 2) FINAL LOCATION OF ALL EQUIPMENT TO BE APPROVED BY THE ENGINEER.
- 3) PROPOSED PAVEMENT AND PAVEMENT MARKINGS ARE SHOWN IN GREYSHADE FOR CLARITY.
- 4) SIGNAL HEADS 3 AND 18 SHALL BE MOUNT SO THAT THE TOP OF THE SIGNAL HEADS ARE JUST BELOW THE ARM.

LEGEND

- ☒ CONTROL CABINET
- NONMETALLIC CONDUIT 2", UNLESS OTHERWISE NOTED
- ◀ SIGNAL HEAD, TRAFFIC SIGNAL STANDARD, PEDESTAL BASE
- (XX) MONOTUBE BASE, POLE, 15'-30' ARM
- (XX) MONOTUBE BASE, POLE, 35'-55' ARM
- ◀ PEDESTRIAN HEAD WITH PUSH BUTTON
- VIDEO DETECTION AREA
- ☒ VIDEO DETECTION CAMERA
- ⊙ PULL BOX, 24" X 42"
- ⊗ EVP DESIGNATOR
- ▶ EVP DETECTOR HEAD/CONFIRMATION BEACON

Addendum No. 1
ID 2070-09-70
Revised Sheet 27
May 5, 2015

MONOTUBE STRUCTURE NUMBERING	
LOCATION	STRUCTURE #
SW CORNER	SB11
N MEDIAN	SB5
E MEDIAN	SB8
NW CORNER	SB2

REV. NO.	REVISION
1	REHAB INTERSECTION

TRAFFIC CONTROL SIGNAL	REV. BY
CTH Y (W. LAYTON AVE.)	
& S. 60th ST.	
CITY OF GREENFIELD	
MILWAUKEE COUNTY	
SIGNAL NO. MC033	
MILWAUKEE COUNTY DOT	

CATEGORY 0010

Addendum No. 1
ID 2070-09-70
Added Sheet 58A
May 5, 2015

CONSTRUCTION STAKING

650.5500 CONSTRUCTION STAKING CURB GUTTER AND CURB & GUTTER	LF	900	650.8500 CONSTRUCTION STAKING ELECTRICAL INSTALLATIONS	LS	1	650.9910 CONSTRUCTION STAKING SUPPLEMENTAL CONTROL	LS	1	SPV.0060.10 CONSTRUCTION STAKING CURB RAMPS	EACH	8	SPV.0090.03 CONSTRUCTION STAKING CONCRETE SIDEWALK	LF	430
TOTAL														

FIELD OFFICE

642.5001 FIELD OFFICE	TYPE B	LS	1
TOTAL			

PLOT SCALE : 1:1

PLOT BY : DMM

PLOT DATE : 4/27/2015

FILE NAME :

SCHEDULE OF ITEMS

REVISED:

CONTRACT:
20150512023PROJECT(S):
2070-09-70FEDERAL ID(S):
WISC 2015287

CONTRACTOR : _____

LINE NO	ITEM DESCRIPTION	APPROX. QUANTITY AND UNITS	UNIT PRICE		BID AMOUNT	
			DOLLARS	CTS	DOLLARS	CTS
1060	SPV.0090 Special 01. Furnish and Install 12SM/12MM Fiber Optic Communicans Cable	1,070.000 LF
1070	SPV.0090 Special 02. Tracer Wire	840.000 LF
1080	SPV.0105 Special 01. Battery Backup System	LUMP	LUMP	.	.	.
1090	SPV.0105 Special 02. Traffic Signal Controller and Cabinet Fully Actuated 16-Phase	LUMP	LUMP	.	.	.
1100	SPV.0105 Special 03. Emergency Vehicle Preemption System	LUMP	LUMP	.	.	.
1110	SPV.0105 Special 04 Vehicular Video Detection System S 60TH ST & W Layton AVE (4 Cameras)	LUMP	LUMP	.	.	.
1120	SPV.0105 Special 05. Fiber Optic Communication System Intregation Documentation and Test	LUMP	LUMP	.	.	.
1130	SPV.0105 Special 06. Removing Traffic Signal Equipment S 60TH ST & W Layton AVE	LUMP	LUMP	.	.	.
1140	SPV.0105 Special 07. Accessible Pedestrian Push Button System	LUMP	LUMP	.	.	.

SCHEDULE OF ITEMS

REVISED:

CONTRACT:
20150512023

PROJECT(S):
2070-09-70

FEDERAL ID(S):
WISC 2015287

CONTRACTOR : _____

LINE NO	ITEM DESCRIPTION	APPROX. QUANTITY AND UNITS	UNIT PRICE		BID AMOUNT	
			DOLLARS	CTS	DOLLARS	CTS
1150	642.5001 Field Office Type B	1.000 EACH	.		.	
1160	650.5500 Construction Staking Curb Gutter and Curb & Gutter	900.000 LF	.		.	
1170	650.8500 Construction Staking Electrical Installations (project) 01. 2070-09-70	LUMP	LUMP		.	
1180	650.9910 Construction Staking Supplemental Control (project) 01. 2070-09-70	LUMP	LUMP		.	
1190	SPV.0060 Special 10. Construction Staking Curb Ramps	8.000 EACH	.		.	
1200	SPV.0090 Special 03. Construction Staking Concrete Sidewalk	430.000 LF	.		.	
	SECTION 0001 TOTAL				.	
	TOTAL BID				.	