



Wisconsin Department of Transportation

April 30, 2015

Division of Transportation Systems Development

Bureau of Project Development
 4802 Sheboygan Avenue, Rm 601
 P O Box 7916
 Madison, WI 53707-7916

Telephone: (608) 266-1631
 Facsimile (FAX): (608) 266-8459

NOTICE TO ALL CONTRACTORS:

Proposal #38: 4610-06-71, WISC 2015 295
Village of Sister Bay
Country Walk Drive – Scandia
Road
STH 42
Door County

Letting of May 12, 2015

This is Addendum No. 1, which provides for the following:

Special Provisions

Revised Special Provisions	
Article No.	Description
4	Prosecution and Progress
5	Traffic
28	Backfill Granular, Item 209.0100
34	Storm Sewers
36	Reinforced Concrete Pipe Storm Sewers
45	Locating No-Passing Zones, Item 648.0100
57	Stormwater Treatment Device, Item SPV.0060.08
70	Sanitary Sewer 8-Inch PVC Special, Item SPV.0090.05; Sanitary Sewer 10-Inch PVC Special, Item SPV.0090.06
92	Stamped Concrete Sidewalk 4-Inch, Item SPV.0165.06

Schedule of Items

Revised Bid Item Quantities					
Bid Item	Item Description	Unit	Old Quantity	Revised Quantity	Proposal Total
465.0125	Asphaltic Surface Temporary	TON	2,444	2,654	2,654
616.0700.S	Fence Safety	LF	4,375	1,175	1,175
643.0300	Traffic Control Drums	DAY	19,035	36,349	36,349
643.0420	Traffic Control Barricades Type III	DAY	6,070	6,927	6,927

643.0705	Traffic Control Warning Lights Type A	DAY	8,255	8,151	8,151
643.0715	Traffic Control Warning Lights Type C	DAY	6,750	12,932	12,932
643.0900	Traffic Control Signs	DAY	9,950	17,630	17,630
643.0920	Traffic Control Covering Signs Type II	EACH	11	15	15
643.3000	Traffic Control Detour Signs	DAY	23,180	34,279	34,279
648.0100	Locating No-Passing Zones	MI	12.57	8.62	8.62
649.0200	Temporary Pavement Marking Reflective Paint 4-Inch	LF	131,310	99,940	99,940

Plan Sheets

Revised Plan Sheets	
Plan Sheet	Plan Sheet Title (brief description of changes to sheet)
29	Construction Detail (added Asphaltic Surface Temporary for Pedestrian Access Detail)
32	Construction Detail (revised Concrete Curb Pedestrian)
44	Construction Detail (revised spot elevation)
45	Construction Detail (revised station offsets and spots elevations)
50	Construction Detail (revised station offsets and spot elevations)
54	Construction Detail (revised spot offset)
57	Construction Detail (revised spot offset)
172	Detour Signing Detail – Overview (revised sheet numbers, revised sheet numbers for stage 3c and 3D, and added winter shutdown)
173	Detour Signing Detail – Stage 1 (revised total sheet number)
174	Detour Signing Detail – Stage 2A (revised total sheet number)
175	Detour Signing Detail – Stage 2B (revised total sheet number)
176	Detour Signing Detail – Stage 3A & 3B (revised total sheet number and detour route)
177	Detour Signing Detail – Stage 3A & 3B (revised total sheet number and detour route)
178	Detour Signing Detail – Stage 3A & 3B (revised total sheet number and detour route)
179	Detour Signing Detail – Stage 3C & 3D (revised total sheet number and detour route)
180	Detour Signing Detail – Stage 3C & 3D (revised total sheet number and detour route)
181	Detour Signing Detail – Winter Shutdown (revised total sheet number and added winter shutdown detour)
213	Miscellaneous Quantities (added quantity for pedestrian access)
221	Miscellaneous Quantities (revised quantity along pipe trenches)
229	Miscellaneous Quantities (added quantity for sign and revised stage total)
230	Miscellaneous Quantities (revised some sign locations)
231	Miscellaneous Quantities (revised some sign locations)
232	Miscellaneous Quantities (revised sign information for revised detour route)
233	Miscellaneous Quantities (revised sign information for revised detour route)
234	Miscellaneous Quantities (revised sign information for revised detour route)
235	Miscellaneous Quantities (revised sign information for revised detour route)
236	Miscellaneous Quantities (revised total amounts for stages 2B, 3A, 3B, 3C, and 3D, added amounts for winter shutdown, and revised project total amounts)
238	Miscellaneous Quantities (revised quantities for revised detour route)

Added Plan Sheets	
Plan Sheet	Plan Sheet Title (brief description of why sheet was added)
181A	Detour Signing Detail – Winter Shutdown (revised total sheet number and added winter shutdown detour)
233A	Miscellaneous Quantities (revised sign information for revised detour route; needed additional

	sheet)
235A	Miscellaneous Quantities (revised sign information for revised detour route; needed additional sheet)
235B	Miscellaneous Quantities (added signs for winter shutdown)
235C	Miscellaneous Quantities (added signs for winter shutdown)
235D	Miscellaneous Quantities (added signs for winter shutdown)
236A	Miscellaneous Quantities (revised days for stage 3C and 3D, added items for winter shutdown, and revised project total; added sheet to fit table on one sheet)

The responsibility for notifying potential subcontractors and suppliers of these changes remains with the prime contractor.

Sincerely,

Mike Coleman

Proposal Development Specialist
Proposal Management Section

ADDENDUM NO. 1

4610-06-71

April 30, 2015

Special Provisions

4. Prosecution and Progress.

Staging

Replace the fifth bullet point under the Stage 1 subsection with the following:

- Complete temporary asphalt paving to match the new STH 57 work to existing STH 42 intersection and existing Gateway Drive to new Gateway Drive section. Cold mix asphalt will not be accepted for pavements open to traffic.

Replace the sixth bullet point under the Stage 2A subsection with the following:

- Complete base aggregate and temporary asphalt surface to reopen STH 42 to through traffic prior to the end of this stage. Cold mix asphalt will not be accepted for pavements open to traffic.

Replace the seventh bullet point under the Stage 2B subsection with the following:

- Prior to reopening the roadway on October 9, 2015 pave all areas of base aggregate within these limits with temporary asphalt. Cold mix asphalt will not be accepted for pavements open to traffic.

Replace the sixth bullet point under the Stage 3A subsection with the following:

- All sections of roadways within the project limits that are to be open to traffic during the winter shut down, including intersections shall be on a paved driving surface. Cold mix asphalt will not be accepted for pavements open to traffic.

5. Traffic.

Staging

Replace the second bullet point under the Stage 3A subsection with the following:

- STH 42 will be open to northbound traffic and southbound traffic will be detoured from STH 42 to Scandia Road to Woodcrest Road to Old Stage Road to STH 57 to Country Walk Drive to STH 42.

Replace the second bullet point under the Stage 3B subsection with the following:

- STH 42 will be open to northbound traffic and southbound traffic will be detoured from STH 42 to Scandia Road to Woodcrest Road to Old Stage Road to STH 57 to Country Walk Drive to STH 42.

Replace the first bullet point under the Stage 3C subsection with the following:

- STH 42 will be open to northbound traffic and southbound traffic will be detoured from STH 42 to Hill Road to N. Spring Road to Woodcrest Road to Old Stage Road to STH 57 to Country Lane to STH 42.

Replace the first bullet point under the Stage 3D subsection with the following:

- STH 42 will be open to northbound traffic and southbound traffic will be detoured from STH 42 to Hill Road to N. Spring Road to Woodcrest Road to Old Stage Road to STH 57 to Country Lane to STH 42.

28. Backfill Granular, Item 209.0100.

Replace entire article language with the following:

Revise 209.2.1(1) of the standard specifications with the following:

- (1) Furnish natural sand or a mixture of sand with gravel, crushed gravel or crushed stone.

Revise 209.2.1(2) of the standard specifications with the following:

- (2) For backfill for trench excavation, use 1 ¼-inch granular backfill conforming to Section 208 and the gradation requirements of 305.2.2.1(1). For bedding under a storm sewer pipe, use 1 ¼-inch granular backfill conforming to Section 208 and the gradation requirements of 305.2.2.1(1).

Remove standard spec 209.2.1(4) and 209.2.1(5).

Revise 209.2.2 with the following:

- (1) Provide 1 ¼-inch granular backfill material conforming to the gradation requirements for base aggregate dense 1 ¼-inch in standard spec 305.2.2.1(1).

Remove standard spec 209.2.3.

Add 209.3(3) to the standard specifications with the following:

- (3) If granular backfill is specified for insulation board polystyrene (size), excavate the trench, level the top of the trench surface, and place the insulation board in accordance with the plan or as determined by the engineer. Backfilling and compacting the trench in 12-inch maximum lifts. Use excavated material for backfill provided that it meets the requirements for 1 ¼-inch granular backfill conforming to Section 208 and the gradation requirements of 305.2.2.1(1). If excavated material does not meet the requirements of section 208 and the gradation requirements of 305.2.2.1(1) of the standard specifications, provide 1 ¼-inch granular backfill material. Granular material placed within 12-inches of the insulation must meet the requirements for 1 ¼-inch granular backfill.

Add 209.4.4 to the standard specifications with the following:

209.4.4 Measurement for Insulation Board Polystyrene (size)

Granular material will be measured by the cubic yard calculated by the area of the insulation required multiplied by the depth from top of insulation to proposed subgrade.

34. Storm Sewers.

Replace entire article language with the following:

Revise standard spec 607.3.2(4) as follows:

If placing the pipe foundation on backfilled granular material, excavate the trench to at least 6 inches below the elevation established for the bottom of the pipe. Backfill this depth with 1 ¼-inch granular backfill conforming to Section 208 and the gradation requirements of 305.2.2.1(1). Compact the material before laying the pipe on the bedding.

Revise standard spec 607.3.2(5) as follows:

After laying the pipe on the compacted base aggregate foundation, place additional 1 ¼-inch granular backfill conforming to the above requirements under and around the pipe in layers not greater than 6 inches. Compact this material by ramming, tamping, or vibrating to provide full and continuous support to the pipe for at least the lower 1/6th of the outside vertical diameter of the pipe.

Remove standard spec 607.3.2(6).

Revise standard spec 607.3.2(9) as follows:

If the sewer trench is soft, muddy, or wet and will not dry out, excavate it to at least 6 inches below the elevation established for the bottom of the pipe. Backfill this depth with 1 ¼-inch granular backfill and compact thoroughly. Place the material under and around the pipe for at least the lower 1/6th of the outside vertical diameter of the pipe. Compact this material in layers not exceeding 6 inches as specified above.

Revise standard spec 607.3.5(1) as follows:

Backfill all trenches and excavations immediately after completing sewer construction. Use 1 ¼-inch granular backfill conforming to Section 208 and the gradation requirements of 305.2.2.1(1).

Revise standard spec 607.5.1(1) as follows:

Payment for the Storm Sewer Pipe bid items is full compensation for providing all materials, including all special Y's, mitered sections, elbows and connections required; for joint ties; for excavating, except rock excavation; for providing and removing sheeting and shoring; for forming foundation; for laying pipe; for sealing joints and making connections to new or existing fixtures; for providing 1 ¼-inch granular backfill material, including bedding material; for backfilling; for cleaning out; and absent the pertinent contract bid items, for restoring the work site.

36. Reinforced Concrete Pipe Storm Sewers.

Replace entire article language with the following:

Add the following to standard spec 608.2:

(4) Provide 1 ¼-inch granular backfill material conforming to the gradation requirements for base aggregate dense 1 ¼-inch in standard spec 305.2.2.1(1).

Revise standard spec 608.5(2) as follows:

Payment for the Storm Sewer Pipe Reinforced Concrete bid items is full compensation for providing all materials; for all excavating except rock excavation; for forming foundation; for providing and

removing sheeting and shoring; for laying pipe; for sealing joints and making connections to new or existing fixtures; for backfilling; providing 1 ¼ –inch granular backfill material, including bedding material; for cleaning out; and absent the pertinent contract bid items, for restoring the work site.

45. Locating No-Passing Zones, Item 648.0100.

Replace entire article language with the following:

The following table lists the roadway name, posted speed limit and no-passing zone sight distance to be used on the project.

Roadway Name	Termini	Posted Speed	No-Passing Zone Sight Distance
Country Walk Drive	STH 42 – STH 57	35 MPH	0.13 mile (686 feet)
Hill Road	STH 42 – N. Spring Road	25 MPH	0.10 mile (528 feet)
N. Spring Road	Hill Road – Scandia Road	25 MPH	0.10 mile (528 feet)
Scandia Road	STH 42 – Woodcrest Road	25 MPH	0.10 mile (528 feet)
Woodcrest Road	Scandia Road – CTH ZZ	25 MPH	0.10 mile (528 feet)
Woodcrest Road	CTH ZZ – Old Stage Road	45 MPH	0.16 mile (845 feet)
CTH ZZ	Woodcrest Road – STH 42	25 MPH	0.10 mile (528 feet)
Old Stage Road	Woodcrest Road – STH 57	45 MPH	0.16 mile (845 feet)
STH 57	Old Stage Road – Approximately 500 feet north of Orchard Drive	45 MPH	0.16 mile (845 feet)
STH 57	Approximately 500 feet north of Orchard Drive – STH 42	35 MPH	0.13 mile (686 feet)
STH 42	STA 600+00 – STA 640+86	30 MPH	0.10 mile (528 feet)
Country Lane	STH 57 – STH 42	45 MPH	0.16 mile (845 feet)

57. Stormwater Treatment Device, Item SPV.0060.08.

Replace the second paragraph under section B Materials with the following:

The stormwater treatment system shall be a Vortechs® Model 7000 System protected under U.S. Patent #5,759,415 as manufactured by

Contech Engineered Solutions
9025 Centre Pointe Drive, Suite 400 West Chester, Ohio 45069
(800) 338-1122

70. Sanitary Sewer 8-Inch PVC Special, Item SPV.0090.05; Sanitary Sewer 10-Inch PVC Special, Item SPV.0090.06

Replace the entire E Payment section with the following:

E Payment

The department will pay for measured quantities at the contract unit price under the following bid item:

ITEM NUMBER	DESCRIPTION	UNIT
SPV.0090.05	Sanitary Sewer 8-Inch PVC Special	LF
SPV.0090.06	Sanitary Sewer 10-Inch PVC Special	LF

Payment is full compensation for all work herein specified and for all materials, labor, tools, fittings, equipment and incidentals necessary to complete the work.

92. Stamped Concrete Sidewalk 4-Inch, Item SPV.0165.06.

Replace entire article language with the following:

A Description

This special provision describes furnishing and installing stamped concrete, complete and accepted in place, including base materials, sealer and samples in accordance to standard specs 415 and 716, as shown on the plans, and as hereinafter provided.

Concrete contractor must have experience successfully installing stamped concrete and shall provide, upon engineer's request, a written list of references specific to stamped concrete projects in the upper Midwest prior to the start of construction.

B Materials

B.1 Concrete

Conform to standard specs 415.

B.2 Concrete Curing

Supply a clear, non-yellowing liquid membrane-forming clear curing compound conforming to ASTM C 1315, type 1 A.

B.3 Mix Approval

B.3.1 General

Perform preliminary laboratory and/or field trial batching to establish the mix proportions necessary to meet the final concrete characteristics.

Submit to the engineer the final mix design including specific sources and/or trade names as applicable or all materials.

Concrete shall have a maximum 4" slump.

B.3.2 Test Panels

At least fifteen working days prior to the start of stamped concrete installation, supply and deliver at an engineer-determined location on the project, one 2-foot x 2-foot test panel of the stamped concrete. Obtain approval from the engineer for the final stamp pattern prior to placing any stamped concrete in the field.

Prepare the concrete surfaces of the Stamped Concrete Test Panel using processes and techniques intended for use on permanent work, including curing procedures, stamping, and sealing as outlined in this section.

The engineer will determine acceptance of the test panel stamp based on review and approval by Village of Sister Bay representatives. Test panel stamp will be evaluated for approval no earlier than 5 days after the test panel was poured and sealed.

B.4 Stamp

Use reusable elastomeric/urethane form liners of the architectural surface treatment(s) as detailed in the plans and hereinafter provided.

Pattern shall be "rough slate textured" running bond pattern with individual "panel" dimensions 6 inches by 6 inches. Maximum relief of brick formliner shall be 1/2". Provide sample formliner pattern to engineer for approval before use.

B.5 Antiquing Release Agent

Use a liquid antiquing release agent that is compatible with the form liner. Apply release agent in accordance to the manufacturer's recommendations.

The antiquing release agent color shall closely match to Federal Standard 595 Color Server, FS color 30108. Provide manufacturer's color chart for antiquing release agent to engineer for approval before use.

B.6 Concrete Sealant

Use concrete sealant that is compatible with the form liner and installation methods.

Prime Sealant: Glossy

Secondary Sealant: Matte

C Construction

Construct stamped concrete in accordance to standard specs 415 and 716 and as herein provided.

Coordinate locations of permanent signage requiring PVC pipe box outs per standard spec 634.3(2).

Stamped Concrete Sidewalk 4-Inch shall match the visual appearance of the approved sample. Replace Stamped Concrete Sidewalk 4-Inch not conforming to the test panel at contractor expense.

C.1 Form Liner (Stamp) Preparation

Clean the form liner prior to each pour and ensure that it is free of any build-up. Visually inspect each liner for blemishes or tears, and repair if necessary per manufacturer's recommendations.

C.2 Stamp

Coordinate with the engineer and verify stamping pattern orientation prior to starting the stamping work.

Stamping method shall be in accordance to manufacturer's specified methods. Prepare stamp tools with a full, smooth coat of antiquing release agent.

While concrete is still in the plastic state, apply imprinting tools to the surface and press into the concrete to create the desired impression. Check all depths of imprints by tool-to-tool surface leveling. Perform tooling as stamping tools are removed after imprinting. Eliminate all squeeze joints between stamping tools, if any, with hand tools prior to concrete setting. Finish all surfaces uniformly.

Ensure that the textured surface is free of laitance; sandblasting is not permitted. Grind or fill any blemishes.

Joint the concrete in accordance to standard spec 602.3.2.5 amended as follows: Delete paragraph (10). Saw joints such that the saw joint follows the concrete pattern recess.

C.3 Finishing

Allow concrete to cure for 24 hours after application of the antiquing release agents and stamp pattern.

Pressure wash concrete surface to remove approximately 75% of the antiquing release agent. Ensure that concrete is clean and dry before proceeding with concrete sealant.

Spray or roll on a single layer of gloss sealant. Follow by spraying on a single coat of matte finish sealer. Do not roll matte finish sealer onto concrete surfaces.

D Measurement

The department will measure Stamped Concrete Sidewalk 4-Inch by the square foot of concrete sidewalk installed, acceptably completed.

E Payment

The department will pay for measured quantities at the contract unit price under the following bid items:

ITEM NUMBER	DESCRIPTION	UNIT
SPV.0165.06	Stamped Concrete Sidewalk 4-Inch	SF

Payment is full compensation for preparing the foundation, unless provided otherwise; for developing mix designs and providing sample panels or test panels; for furnishing materials (including concrete masonry, sealers, joint and bond breakers, and retarders), hauling, preparing, placing, curing, and protecting the concrete; for stamping ; for sawing required for construction of stamped concrete; for jointing and joint materials, and tie bars; for measuring opening strength including fabricating and testing cylinders, obtaining and testing cores, and evaluating maturity; for furnishing all removal of stamped concrete; and for all labor, equipment, tools, and incidentals necessary to complete the work.

Schedule of Items

Attached, dated April 30, 2015, are the revised Schedule of Items Pages 5, 11, 14, and 15.

Plan Sheets

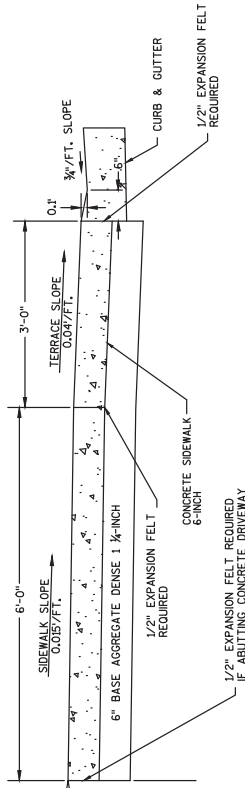
The following 8 ½ x 11-inch sheets are attached and made part of the plans for this proposal:

Revised: 29, 32, 44, 45, 50, 54, 57, 172-181, 213, 221, 229-236, and 238

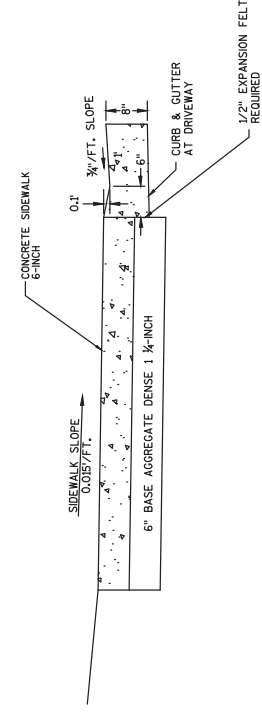
Added: 181A, 233A, 235A, 235B, 235C, 235D, and 236A

END OF ADDENDUM

DRIVEWAY SLOPE
7% DESIRABLE MAX. 10% MAX

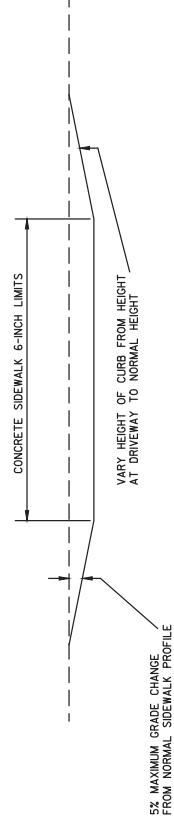


DEPRESSED SIDEWALK AT DRIVEWAY WITH TERRACE DETAIL

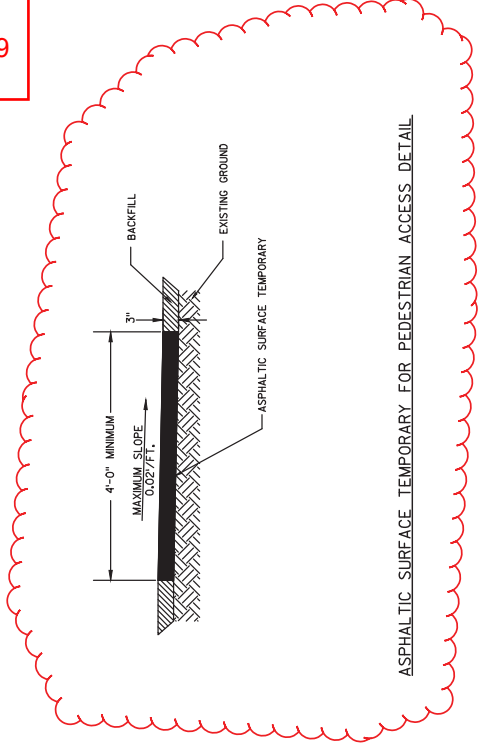


DEPRESSED SIDEWALK AT DRIVEWAY WITHOUT TERRACE DETAIL

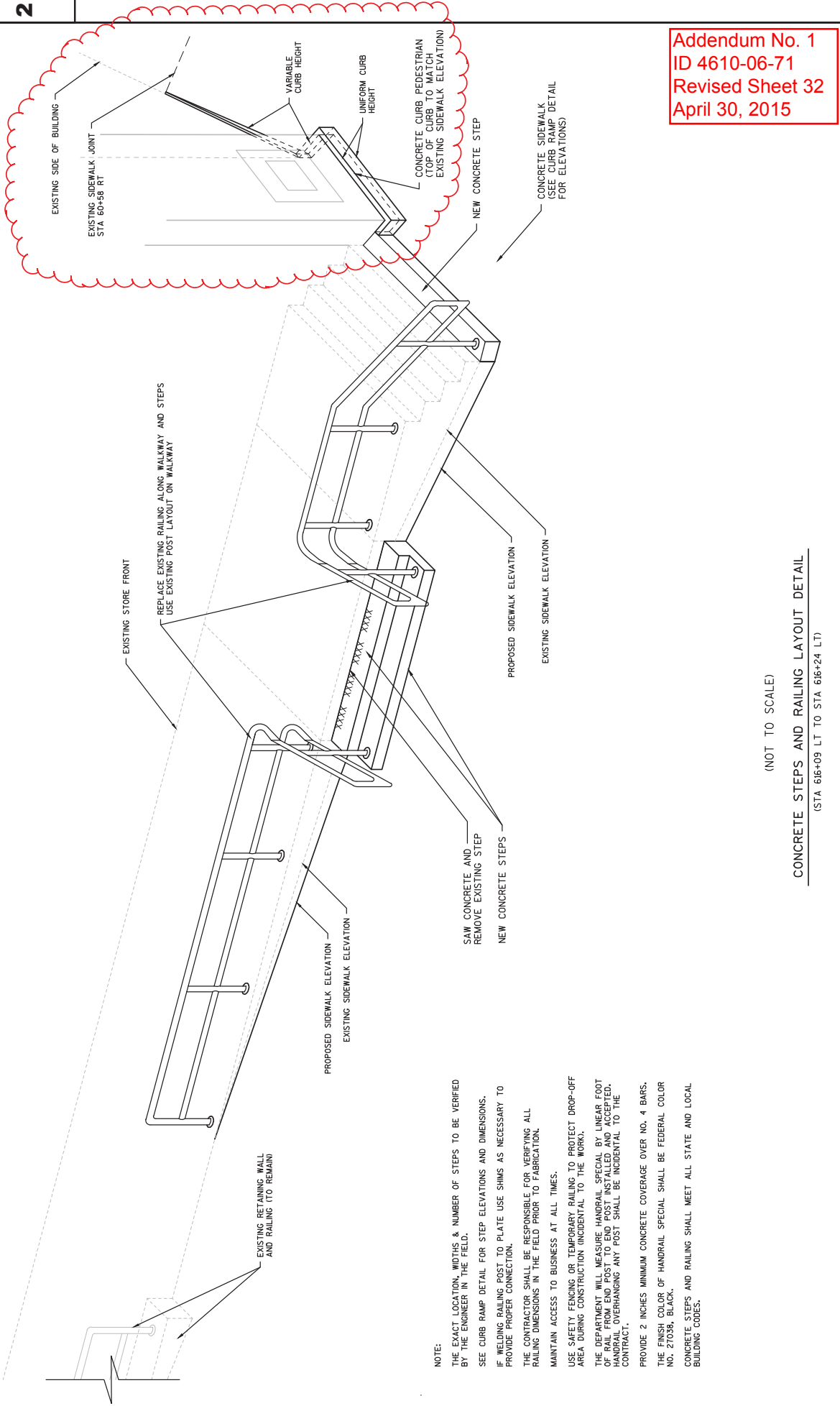
Addendum No. 1
ID 4610-06-71
Revised Sheet 29
April 30, 2015



DEPRESSED SIDEWALK PROFILE DETAIL



ASPHALTIC SURFACE TEMPORARY FOR PEDESTRIAN ACCESS DETAIL



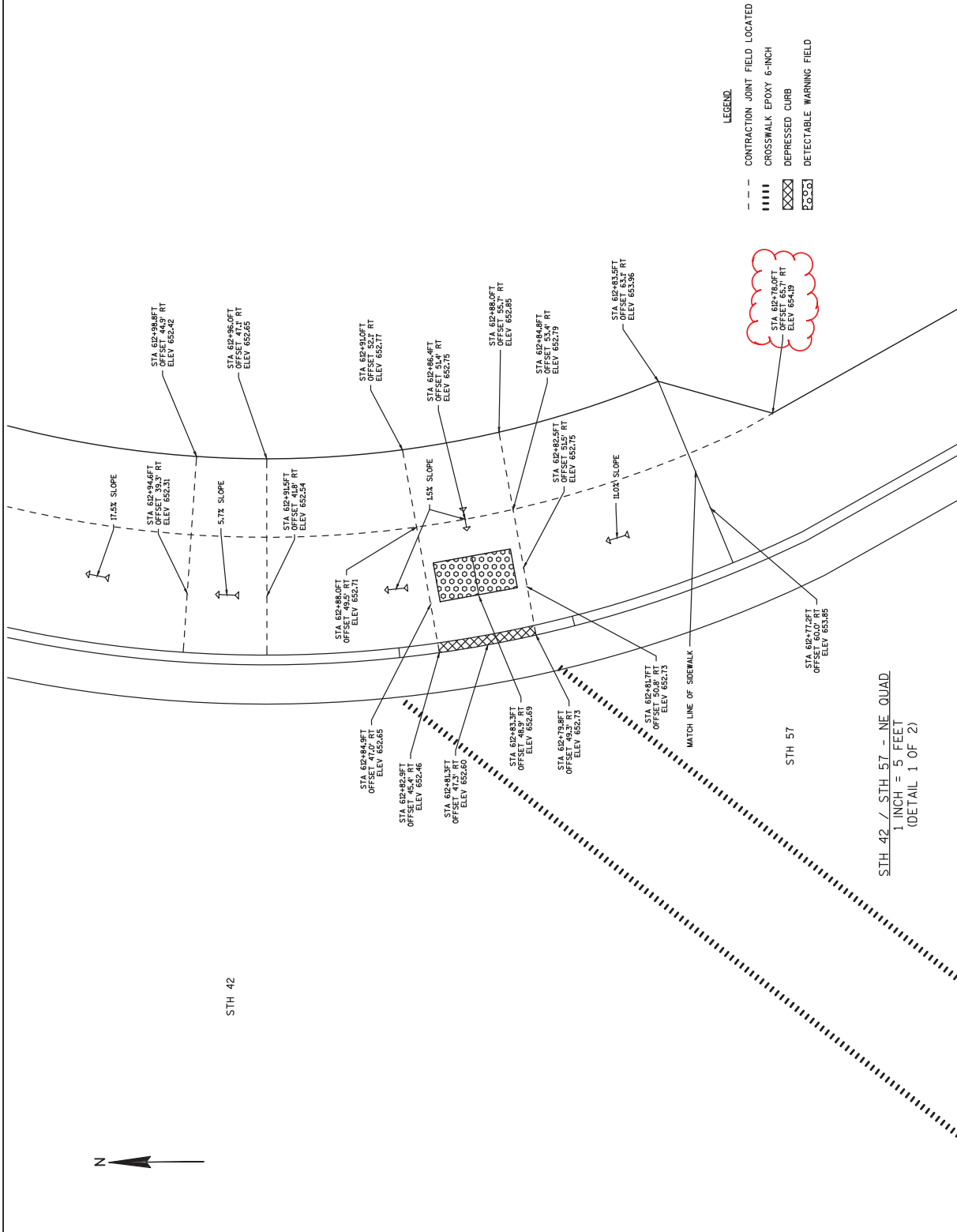
Addendum No. 1
 ID 4610-06-71
 Revised Sheet 32
 April 30, 2015

NOTE:
 THE EXACT LOCATION, WIDTHS, & NUMBER OF STEPS TO BE VERIFIED BY THE ENGINEER IN THE FIELD.
 SEE CURB RAMP DETAIL FOR STEP ELEVATIONS AND DIMENSIONS.
 IF WELDING RAILING POST TO PLATE USE SHIMS AS NECESSARY TO PROVIDE PROPER CONNECTION.
 THE CONTRACTOR SHALL BE RESPONSIBLE FOR VERIFYING ALL RAILING DIMENSIONS IN THE FIELD PRIOR TO FABRICATION.
 MAINTAIN ACCESS TO BUSINESS AT ALL TIMES.
 USE SAFETY FENCING OR TEMPORARY RAILING TO PROTECT DROP-OFF AREA DURING CONSTRUCTION INCIDENTAL TO THE WORK.
 THE DEPARTMENT WILL MEASURE HANDRAIL SPECIAL BY LINEAR FOOT OF RAIL FROM END POST TO END POST INSTALLED AND ACCEPTED. APPROVAL OF ANY OVERHANGING ANY POST SHALL BE INCIDENTAL TO THE CONTRACT.
 PROVIDE 2 INCHES MINIMUM CONCRETE COVERAGE OVER NO. 4 BARS.
 THE FINISH COLOR OF HANDRAIL SPECIAL SHALL BE FEDERAL COLOR NO. 27038, BLACK.
 CONCRETE STEPS AND RAILING SHALL MEET ALL STATE AND LOCAL BUILDING CODES.

(NOT TO SCALE)

CONCRETE STEPS AND RAILING LAYOUT DETAIL
 (STA 616+09 LT TO STA 616+24 LT)

Addendum No. 1
ID 4610-06-71
Revised Sheet 44
April 30, 2015



PROJECT NO: 4610-06-71

HWY: STH 42

COUNTY: DOOR

CONSTRUCTION DETAILS (CURB RAMPS)

SHEET 44

E

FILE NAME : N:\PDS\C3D\46100600\SHETS\OTHER\021101_CD\021101_CD.DWG

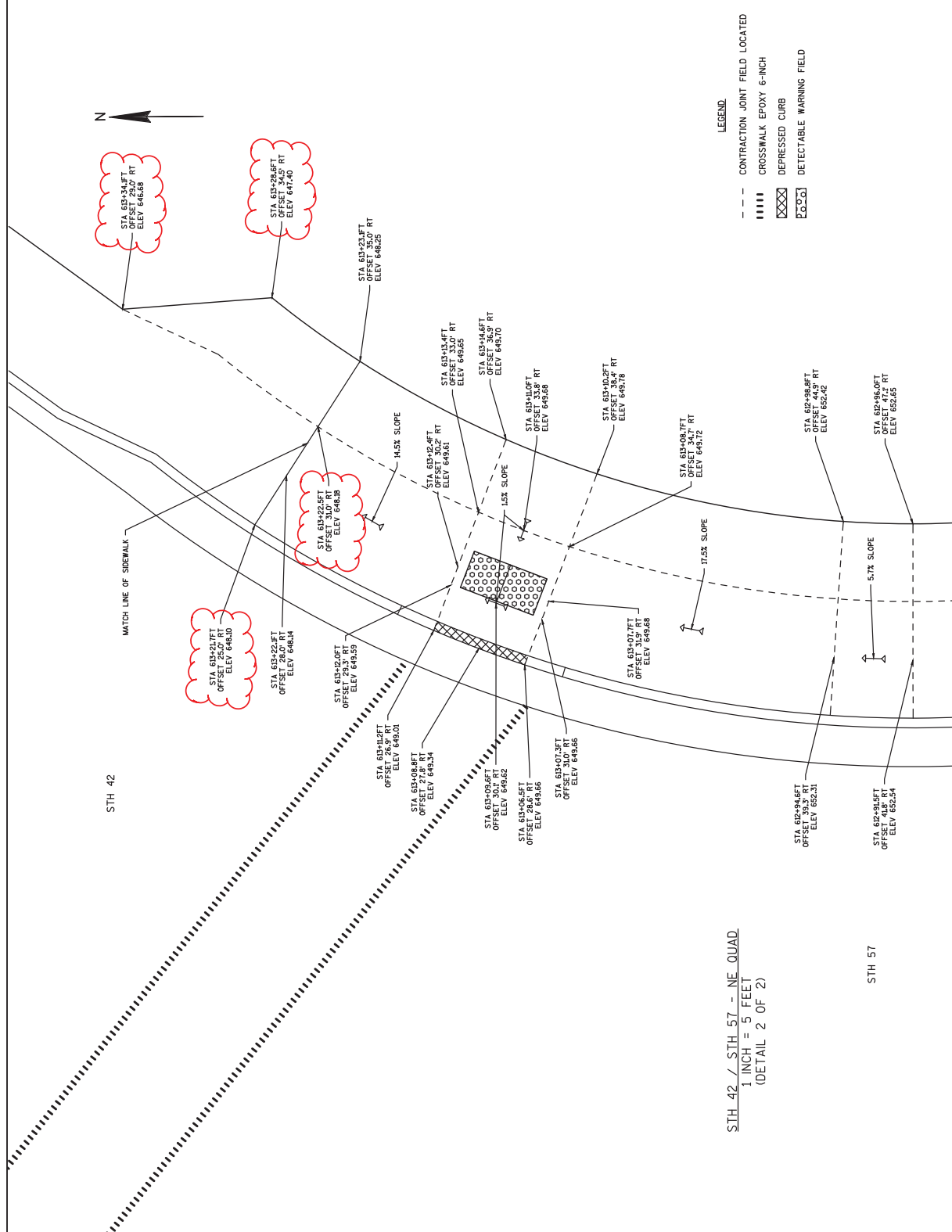
PLOT DATE : 4/23/2015 4:08 PM

PLOT BY : LECLAIR, TYLER T

PLOT NAME : PLOT SCALE : 1 IN:10 FT

WSDOT/CADD SHEET 42

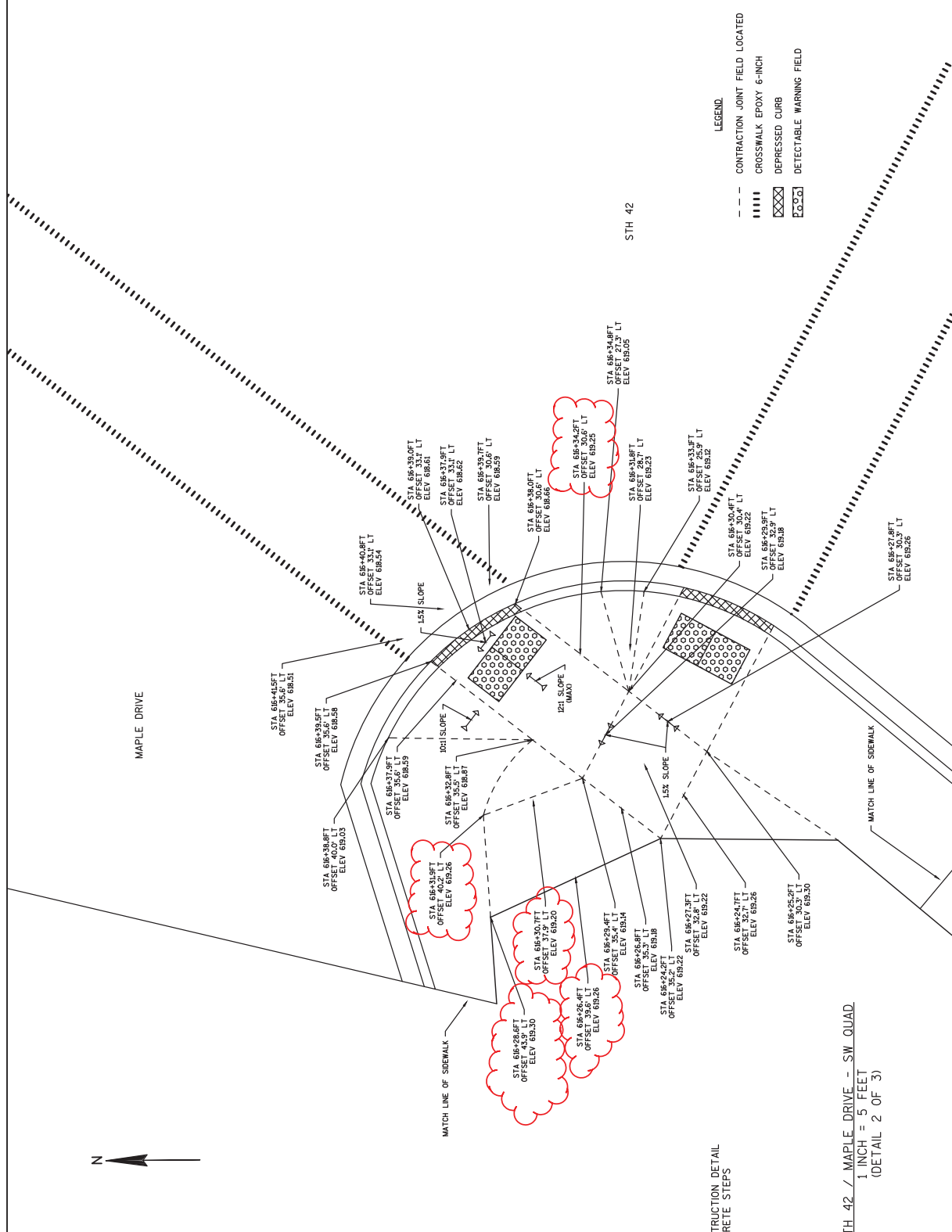
Addendum No. 1
 ID 4610-06-71
 Revised Sheet 45
 April 30, 2015



- LEGEND
- CONTRACTION JOINT FIELD LOCATED
 - ||||| CROSSWALK EPOXY 6-INCH
 - ▣ DEPRESSED CURB
 - ▤ DETECTABLE WARNING FIELD

STH 42 / STH 57 - NE QUAD
 1 INCH = 5 FEET
 (DETAIL 2 OF 2)

Addendum No. 1
ID 4610-06-71
Revised Sheet 50
April 30, 2015



SEE CONSTRUCTION DETAIL FOR CONCRETE STEPS

STH 42 / MAPLE DRIVE - SW QUAD.
1 INCH = 5 FEET
(DETAIL 2 OF 3)

CONSTRUCTION DETAILS (CURB RAMPS)

COUNTY: DOOR

HWY: STH 42

PROJECT NO: 4610-06-71

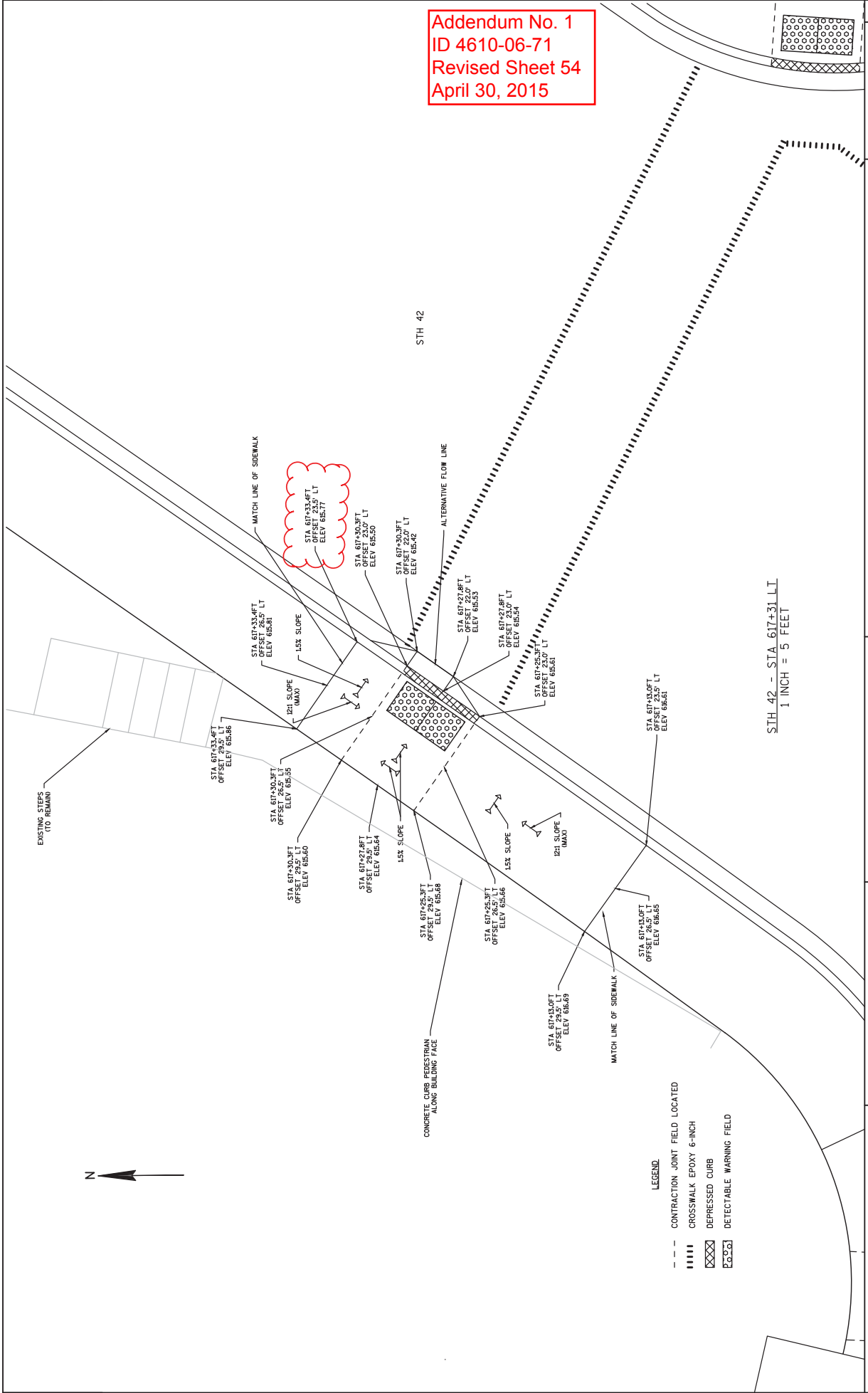
FLAT BY: LECLAIR, TYLER T

PLOT DATE: 4/23/2015 4:08 PM

PLOT NAME: STH 42

FLAT SCALE: 1 IN:10 FT

Addendum No. 1
ID 4610-06-71
Revised Sheet 54
April 30, 2015



- LEGEND.
- CONTRACTION JOINT FIELD LOCATED
 - ||||| CROSSWALK EPOXY 6-INCH
 - ▣ DEPRESSED CURB
 - ▣ DETECTABLE WARNING FIELD

STH 42 - STA 617+31 LT
1 INCH = 5 FEET

CONSTRUCTION DETAILS (CURB RAMPS)

COUNTY: DOOR

HWY: STH 42

PROJECT NO: 4610-06-71

FILE NAME : N:\PDS\C3D\46100600\SHEETS\OTHER\021101_CD\021101_CD.DWG

PLOT DATE : 4/23/2015 1:08 PM

PLOT BY : LECLAIR, TYLER T

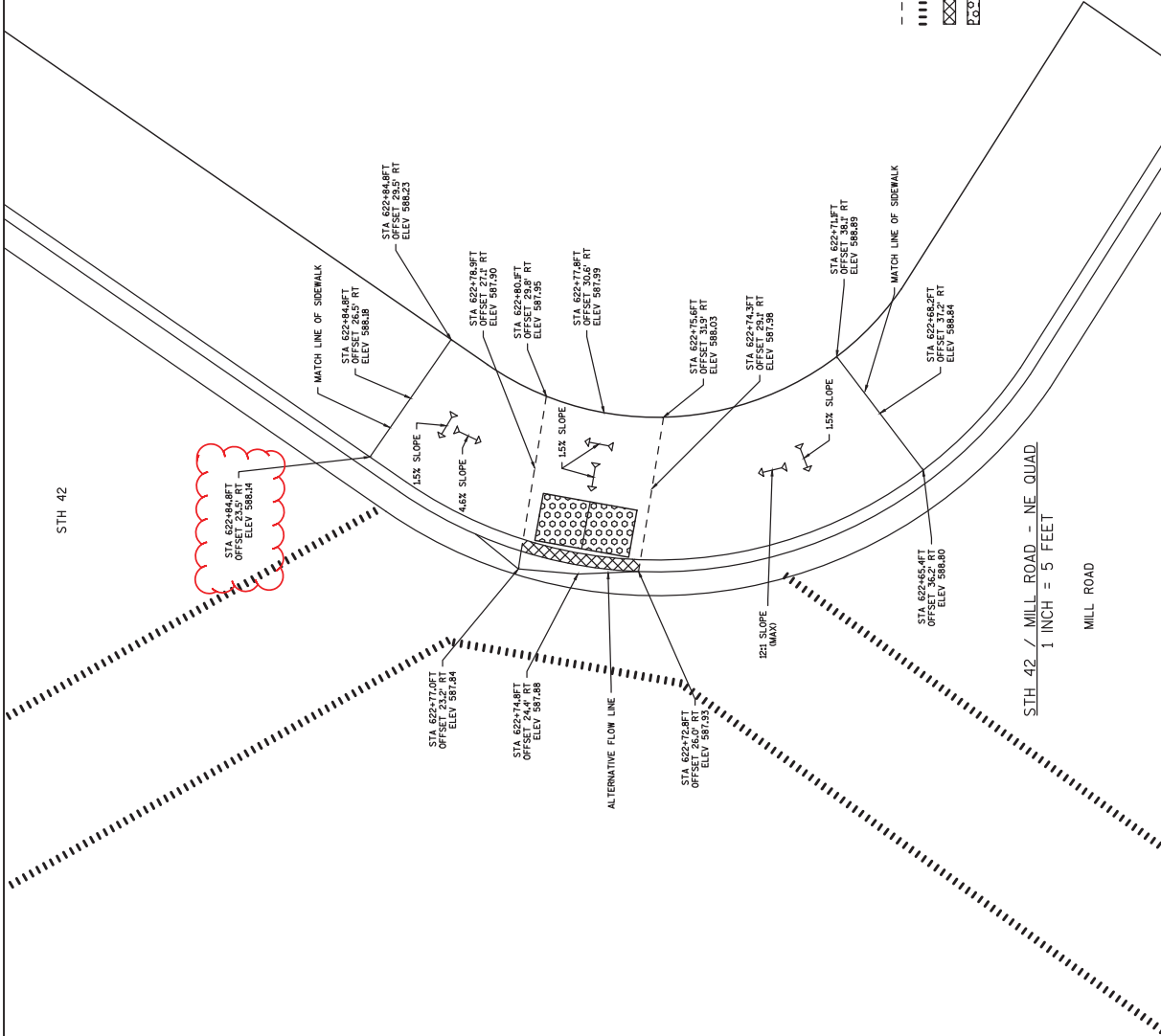
PLOT SCALE : 1 IN:10 FT

STH 42



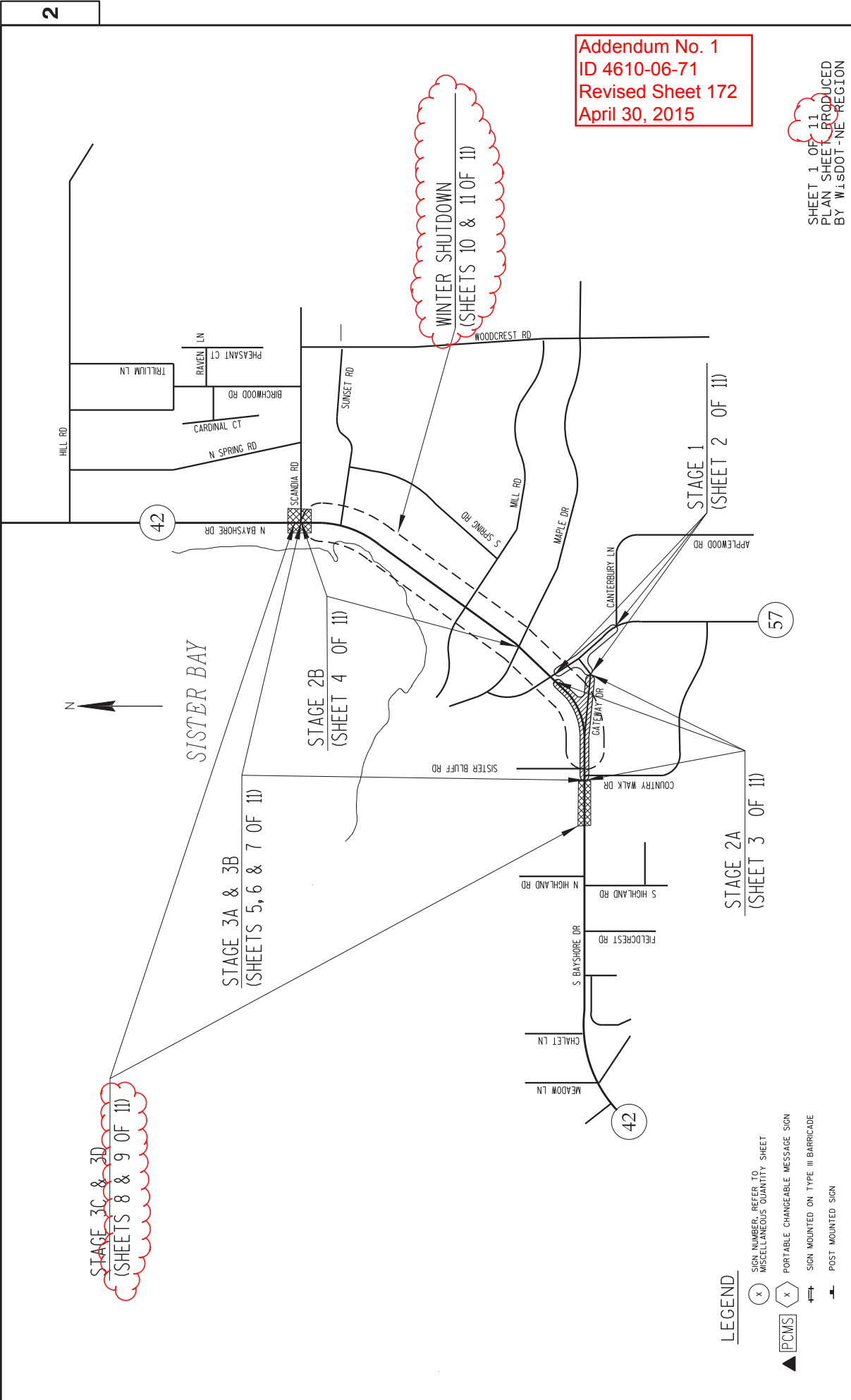
Addendum No. 1
ID 4610-06-71
Revised Sheet 57
April 30, 2015

- LEGEND.
- CONTRACTION JOINT FIELD LOCATED
 - ||||| CROSSWALK EPOXY 6-INCH
 - XXXXX DEPRESSED CURB
 - XXXXX DETECTABLE WARNING FIELD



Addendum No. 1
ID 4610-06-71
Revised Sheet 172
April 30, 2015

SHEET 1 OF 11
PLAN SHEET PRODUCED
BY WISDOT - NE REGION



- LEGEND**
- (X) SIGN NUMBER, REFER TO MISCELLANEOUS QUANTITY SHEET
 - (PCMS) PORTABLE CHANGEABLE MESSAGE SIGN
 - ⇄ SIGN MOUNTED ON TYPE III BARRICADE
 - POST MOUNTED SIGN

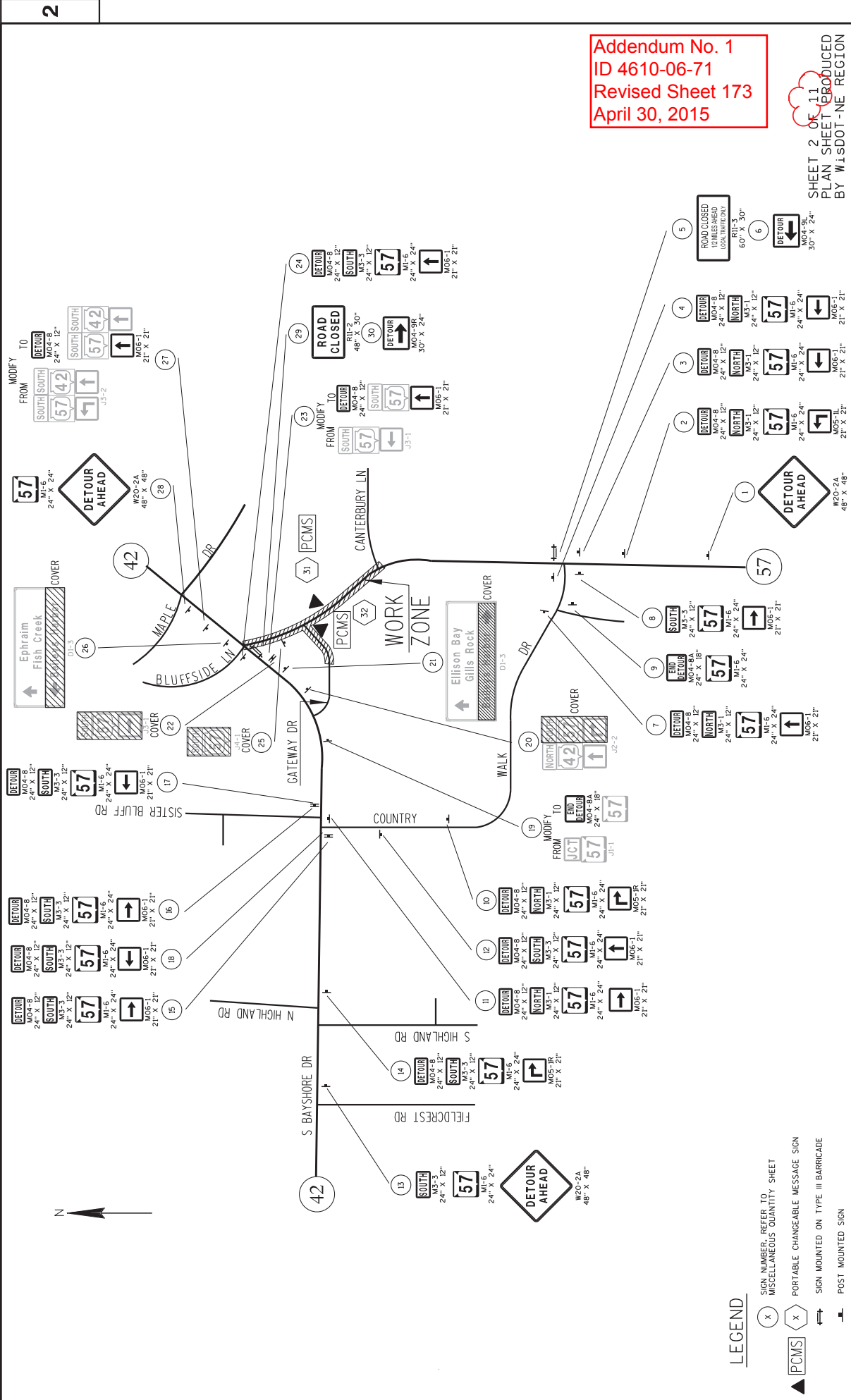
PROJECT NO: 4610-06-71	HWY: STH 42	COUNTY: DOOR	DETOUR SIGNING DETAIL - OVERVIEW	SHEET 172	E
FILE NAME : F:\03-461006\027001.dwg			PLOT BY : dljbs		WISDOT/CADDIS SHEET 42
PLOT DATE : 15-APR-2015 08:51			PLOT SCALE : 200:1		

Addendum No. 1
 ID 4610-06-71
 Revised Sheet 173
 April 30, 2015

SHEET 2 OF 11
 PLAN SHEET PRODUCED
 BY WISDOT-NE REGION

SHEET 173

WISDOT/CARDS SHEET 42



LEGEND

- (X) SIGN NUMBER, REFER TO MISCELLANEOUS QUANTITY SHEET
- (X) PORTABLE CHANGEABLE MESSAGE SIGN
- ⇄ SIGN MOUNTED ON TYPE III BARRICADE
- ▲ POST MOUNTED SIGN
- ▲ PCMS

PROJECT NO: 4610-06-71

HWY: STH 42

COUNTY: DOOR

DETOUR SIGNING DETAIL - STAGE 1

PLOT SCALE: 200:1

PLOT BY: dt,jds

PLOT DATE: 13-APR-2015 08:35

PLOT NAME:

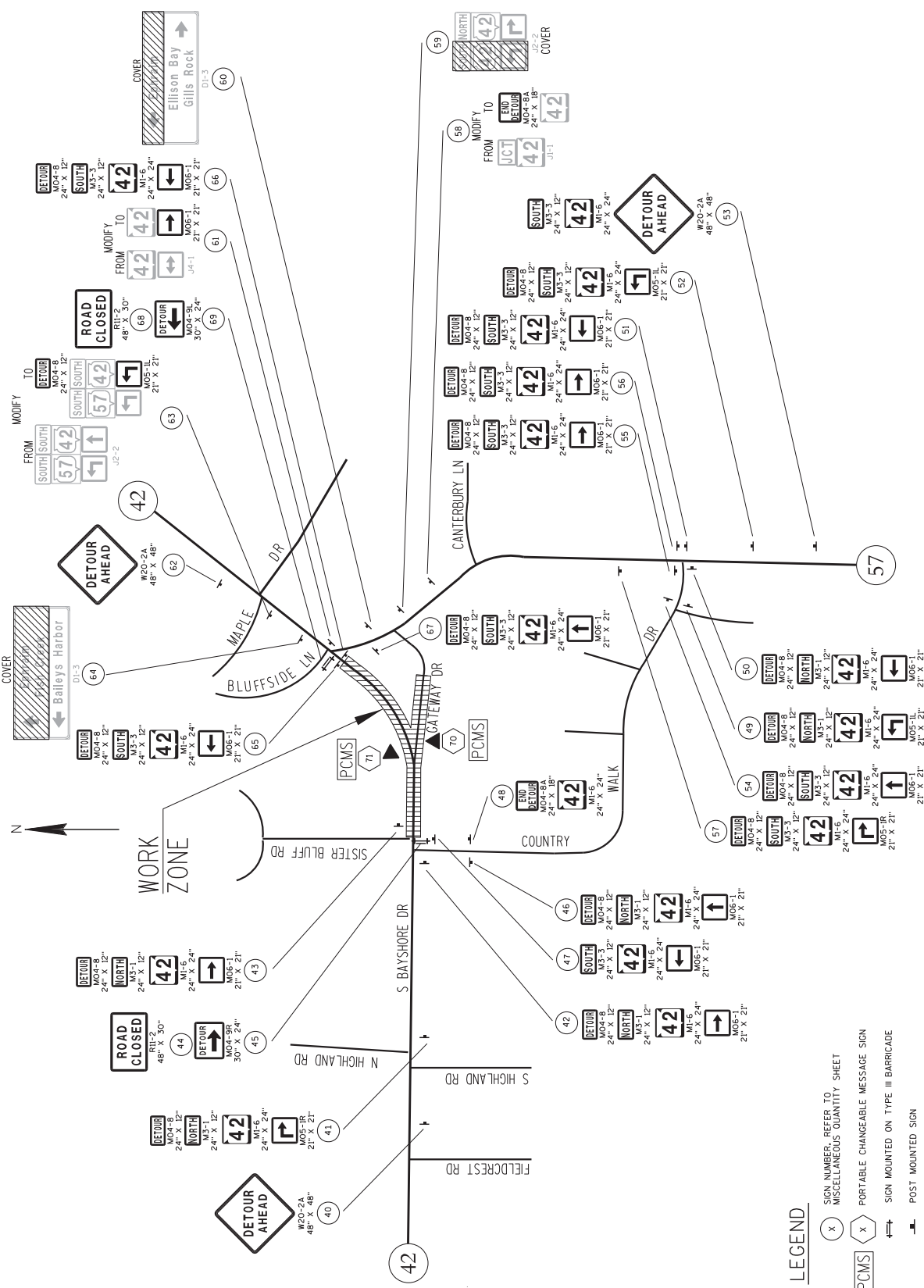
FILE NAME: F:\vbl_461006\027002.dwt.dgn

Addendum No. 1
 ID 4610-06-71
 Revised Sheet 174
 April 30, 2015

SHEET 3 OF 11
 PLAN SHEET PRODUCED
 BY WISDOT-NE REGION

SHEET 174

WISDOT/CARDS SHEET 42

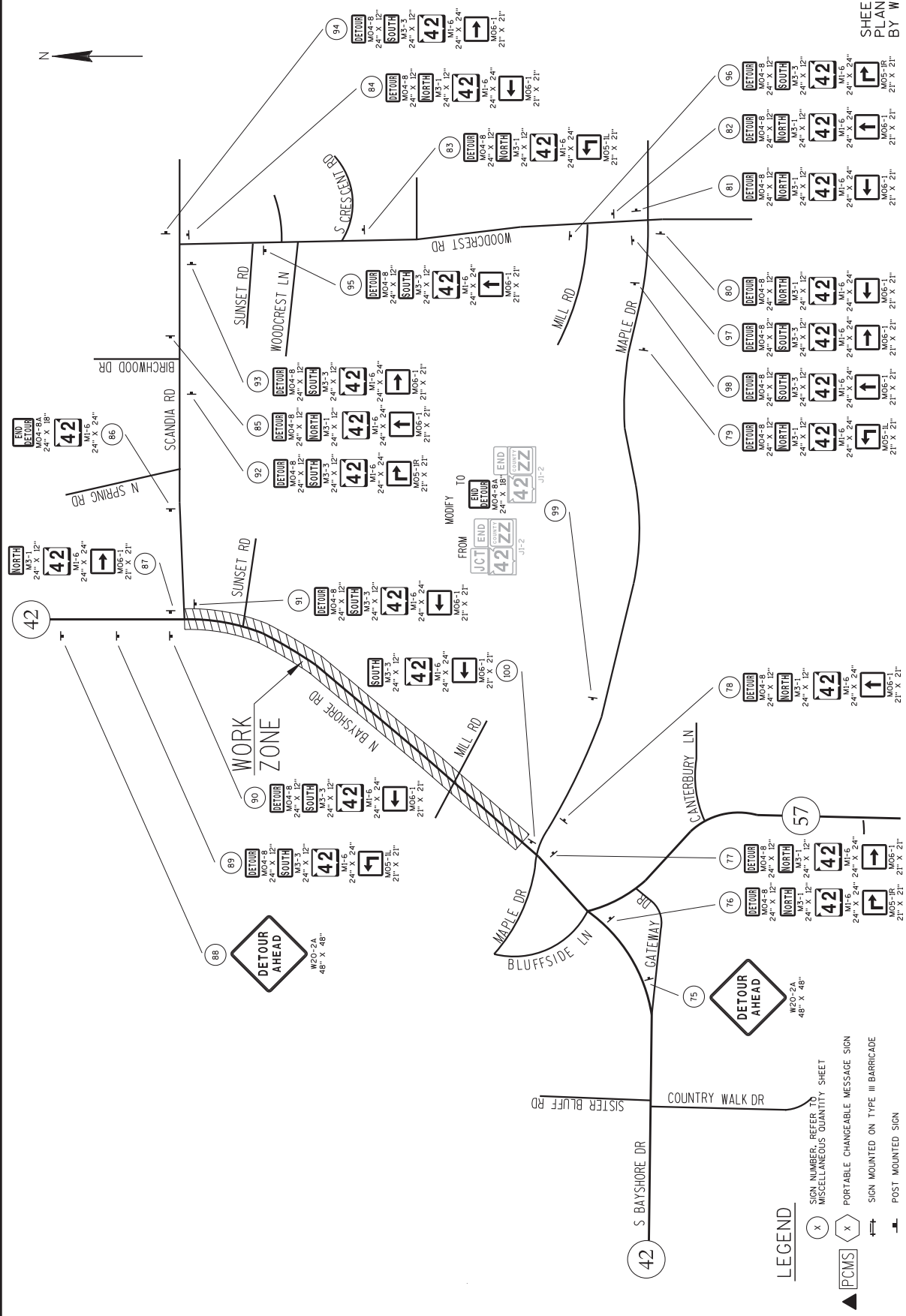


- LEGEND**
- (X) SIGN NUMBER, REFER TO MISCELLANEOUS QUANTITY SHEET
 - (X) PORTABLE CHANGEABLE MESSAGE SIGN
 - ▲ SIGN MOUNTED ON TYPE III BARRICADE
 - ⇄ POST MOUNTED SIGN
 - ▲ PCMS

PROJECT NO: 4610-06-71
 COUNTY: DOOR
 HWY: STH 42
 DETOUR SIGNING DETAIL - STAGE 2A
 PLOT NAME :
 PLOT DATE : 13-APR-2015 08:35
 PLOT BY : ut1jbs
 PLOT SCALE : 200:1

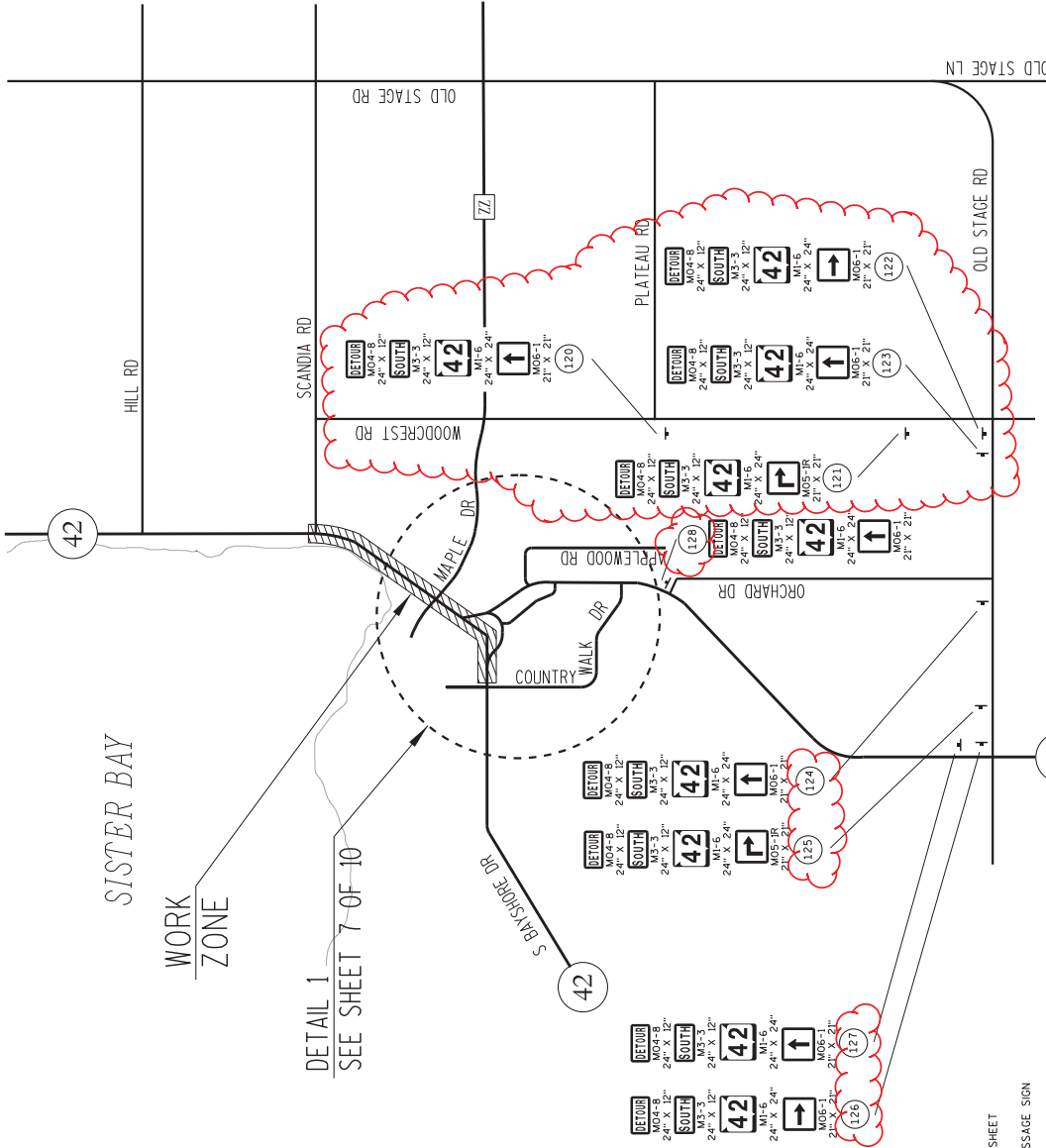
Addendum No. 1
 ID 4610-06-71
 Revised Sheet 175
 April 30, 2015

SHEET 4 OF 11
 PLAN SHEET PRODUCED
 BY WISDOT-NE REGION



LEGEND

(X)	SIGN NUMBER, REFER TO MISCELLANEOUS QUANTITY SHEET
(X)	PORTABLE CHANGEABLE MESSAGE SIGN
(X)	SIGN MOUNTED ON TYPE III BARRICADE
(X)	POST MOUNTED SIGN



LEGEND

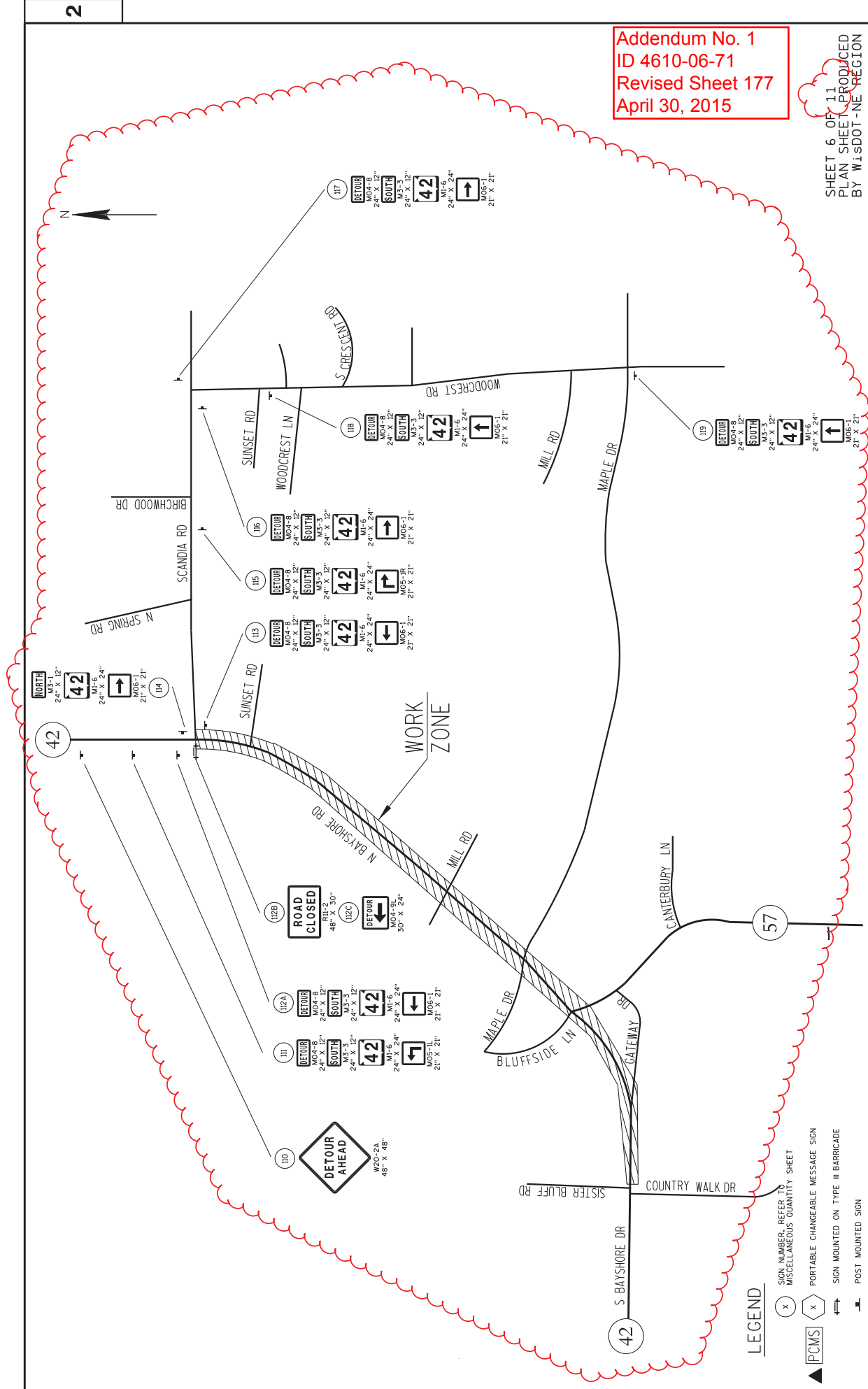
- SIGN NUMBER, REFER TO MISCELLANEOUS QUANTITY SHEET
- PORTABLE CHANGEABLE MESSAGE SIGN
- SIGN MOUNTED ON TYPE III BARRICADE
- POST MOUNTED SIGN

Addendum No. 1
 ID 4610-06-71
 Revised Sheet 176
 April 30, 2015

SHEET 5 OF 11
 PLAN SHEET PRODUCED
 BY WISDOT - NE REGION

Addendum No. 1
ID 4610-06-71
Revised Sheet 177
April 30, 2015

SHEET 6 OF 11
PLAN SHEET PRODUCED
BY WISDOT-NE REGION



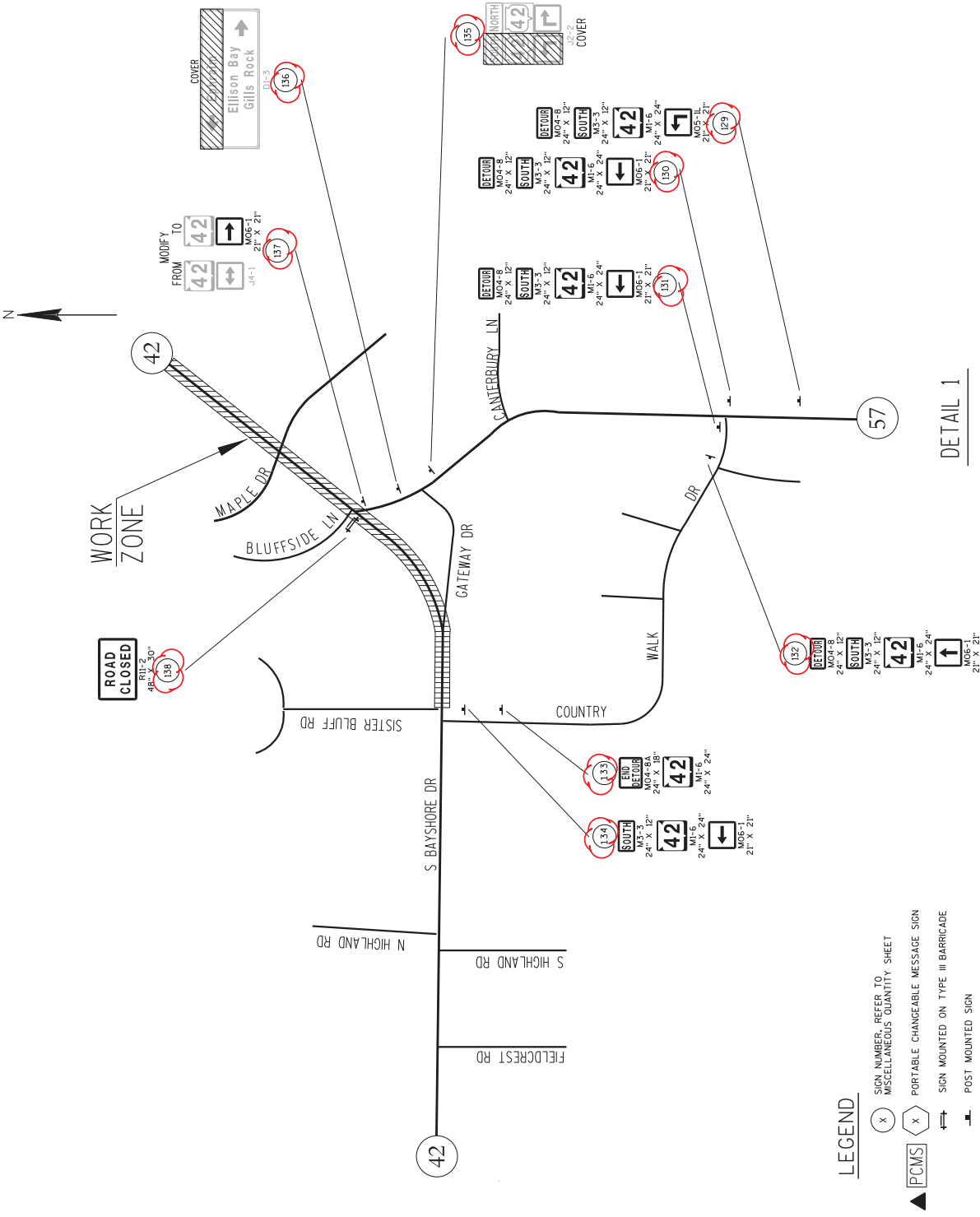
- LEGEND**
- (X) SIGN NUMBER, REFER TO MISCELLANEOUS QUANTITY SHEET
 - (PCMS) PORTABLE CHANGEABLE MESSAGE SIGN
 - ⇄ SIGN MOUNTED ON TYPE III BARRICADE
 - ⊥ POST MOUNTED SIGN

Addendum No. 1
ID 4610-06-71
Revised Sheet 178
April 30, 2015

SHEET 7 OF 11
PLAN SHEET PRODUCED
BY WISDOT-NE REGION

SHEET 178

WISDOT/CARDS SHEET 42



DETAIL 1

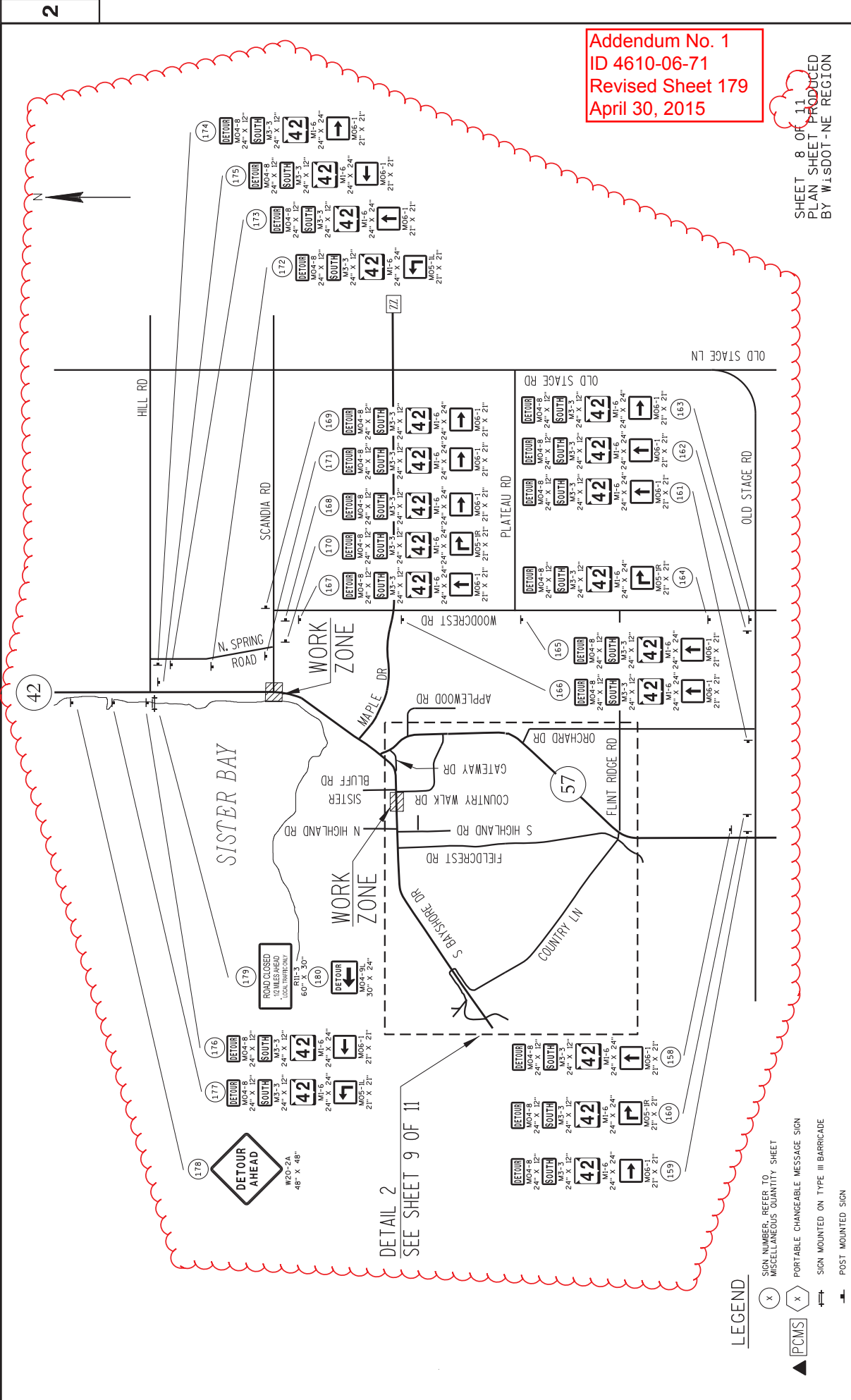
- LEGEND**
- (X) SIGN NUMBER, REFER TO MISCELLANEOUS QUANTITY SHEET
 - PCMS PORTABLE CHANGEABLE MESSAGE SIGN
 - ⇄ SIGN MOUNTED ON TYPE III BARRICADE
 - ⊥ POST MOUNTED SIGN

PROJECT NO: 4610-06-71
 COUNTY: DOOR
 HWY: STH 42
 DETOUR SIGNING DETAIL - STAGE 3A & 3B
 PLOT NAME:
 PLOT BY: utljbs
 PLOT DATE: 13-APR-2015 08:35
 PLOT SCALE: 200:1

FILE NAME : F:\03-461006\027007.dwg

Addendum No. 1
ID 4610-06-71
Revised Sheet 179
April 30, 2015

SHEET 8 OF 11
PLAN SHEET PRODUCED
BY WISDOT-NE REGION



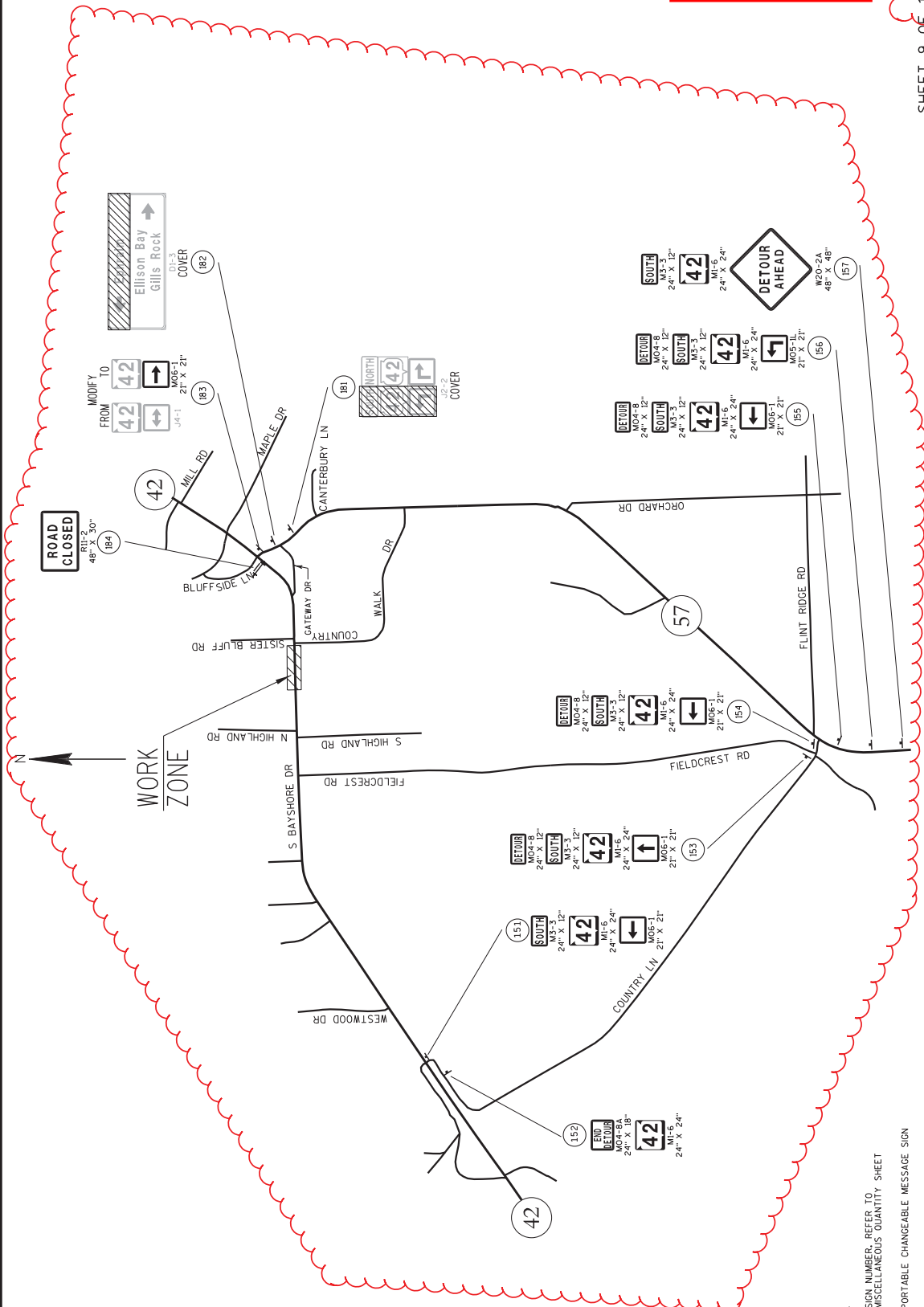
DETAIL 2
SEE SHEET 9 OF 11

LEGEND

- (X) SIGN NUMBER, REFER TO MISCELLANEOUS QUANTITY SHEET
- (PCMS) (X) PORTABLE CHANGEABLE MESSAGE SIGN
- ⇄ SIGN MOUNTED ON TYPE III BARRICADE
- ⇄ POST MOUNTED SIGN

Addendum No. 1
 ID 4610-06-71
 Revised Sheet 180
 April 30, 2015

SHEET 9 OF 11
 PLAN SHEET PRODUCED
 BY WISDOT-NE REGION

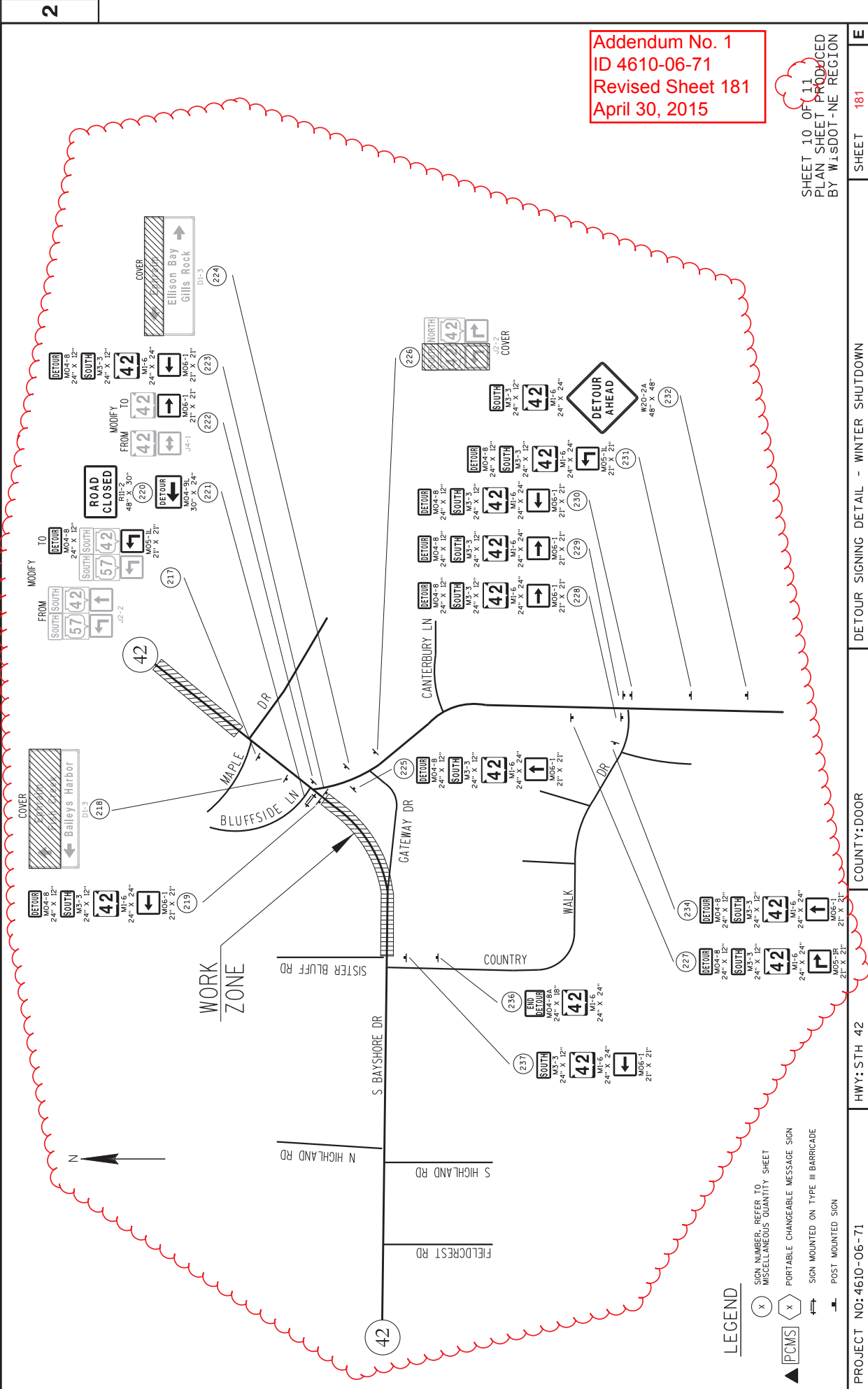


- LEGEND**
- (X) SIGN NUMBER, REFER TO MISCELLANEOUS QUANTITY SHEET
 - (PCMS) PORTABLE CHANGEABLE MESSAGE SIGN
 - ⇄ SIGN MOUNTED ON TYPE III BARRICADE
 - ⊥ POST MOUNTED SIGN

DETAIL 2

Addendum No. 1
 ID 4610-06-71
 Revised Sheet 181
 April 30, 2015

SHEET 10 OF 11
 PLAN SHEET PRODUCED
 BY WISDOT-NE REGION



LEGEND

- (X) SIGN NUMBER, REFER TO MISCELLANEOUS QUANTITY SHEET
- (PCMS) PORTABLE CHANGEABLE MESSAGE SIGN
- (MOUNTED) SIGN MOUNTED ON TYPE III BARRICADE
- (POST) POST MOUNTED SIGN

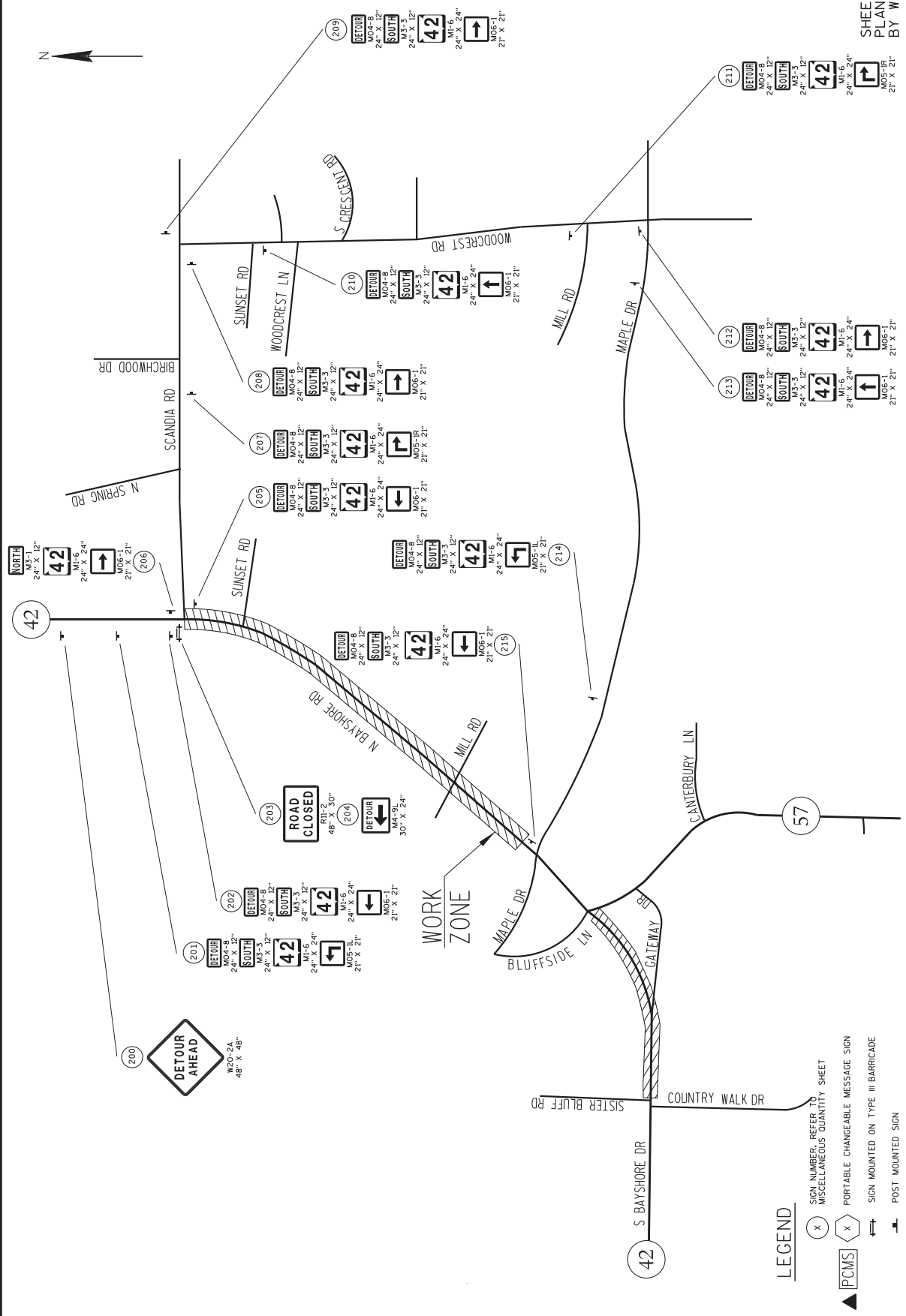
FILE NAME : F:\vd8-461006\027010-dt1.dgn

Addendum No. 1
 ID 4610-06-71
 Added Sheet 181A
 April 30, 2015

SHEET 11 OF 11
 PLAN SHEET PRODUCED
 BY WISDOT-NE REGION

SHEET 181A

E



LEGEND

- (X) SIGN NUMBER, REFER TO MISCELLANEOUS QUANTITY SHEET
- (PCMS) PORTABLE CHANGEABLE MESSAGE SIGN
- ⇄ SIGN MOUNTED ON TYPE III BARRICADE
- ⊥ POST MOUNTED SIGN

PROJECT NO: 4610-06-71

HWY: STH 42

COUNTY: DOOR

DETOUR SIGNING DETAIL - WINTER SHUTDOWN

PLOT SCALE: 200:1

FILE NAME: F:\v05\461006\027011.dwg
 PLOT BY: dtjds
 PLOT DATE: 13-APR-2015 13:59

Addendum No. 1
ID 4610-06-71
Revised Sheet 213
April 30, 2015

CONCRETE SURFACE DRAINS

STATION	LOCATION	CY	REMARKS
33+87	28 RT GATEWAY	1	
TOTAL		1	

ASPHALTIC FLUMES

STATION	LOCATION	SY	REMARKS
20+25 RT	SISTER BLUFF DRIVE	4	
110+45 LT	SCANDIA ROAD	3	
TOTAL		7	

HMA COLD WEATHER PAVING

ITEM	TON
460.4000	100

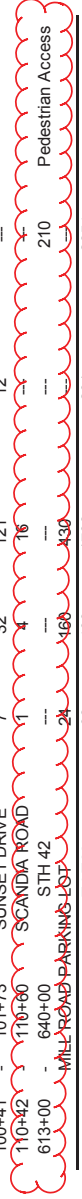
CONCRETE PAVEMENT SUMMARY

STATION TO	STATION	LOCATION	CY	REMARKS
600+00	-	603+00	STH 42	---
603+00	-	607+07	STH 42	---
607+07	-	613+33	STH 42	---
613+33	-	619+87	STH 42	---
619+87	-	640+86	STH 42	---
		MILL ROAD PARKING LOT		---
TOTAL				3830

Includes all concrete, even side roads, within the station ranges

ASPHALTIC CONCRETE PAVEMENT SUMMARY

STATION TO	STATION	LOCATION	TON	REMARKS
600+00	-	603+00	STH 42	---
10+62	-	10+73	COUNTRY WALK DRIVE	---
20+21	-	20+31	SISTER BLUFF DRIVE	---
603+00	-	607+07	STH 42	---
607+07	-	613+33	STH 42	---
30+60	-	33+69	GATEWAY DRIVE	---
50+60	-	53+19	STH 57	---
53+19	-	57+31	STH 57	---
40+88	-	41+67	BLUFFSIDE LANE	---
613+33	-	619+87	STH 42	---
60+63	-	60+89	MAPLE DRIVE	---
70+43	-	70+88	CTH ZZ	---
619+87	-	640+86	STH 42	---
80+26	-	80+32	MILL ROAD (WEST)	---
90+42	-	90+56	MILL ROAD (EAST)	---
100+41	-	101+73	SUNSET DRIVE	---
110+42	-	110+60	SCANDIA ROAD	---
613+00	-	640+00	STH 42	---
		MILL ROAD PARKING LOT		---
TOTAL				2654



SPV.0180.04 TEMPORARY PAVEMENT

STATION TO	STATION	LOCATION	SY
612+40	-	617+20	STH 42 LT
TOTAL			640

CULVERT PIPE LINER SUMMARY

STATION TO	STATION	LF	EACH	REMARKS
630+77	-	630+78	151 LT	1
TOTAL				1

* CATEGORY 0020 ITEM

*** CATEGORY 0040 ITEM

OTHER STORM SEWER ITEMS

LOCATION	STORM SEWER PIPE COMPOSITE	SPV.0060.08	STORMWATER TREATMENT DEVICE	SPV.0060.09	STORM SEWER TEE	54-INCH x 18-INCH	SPV.0060.10	STORM SEWER PLUG	SPV.0060.11	CONCRETE 30X24-INCH TRANSITION MANHOLE	SPV.0165.01	CONCRETE WER INSIDE MANHOLE	FROM STRUCTURE	TO STRUCTURE	EXISTING MH	INVERT ELEVATION	REMARKS
50+73, 45.3 RT	607.0406 6-INCH 8-INCH	607.0410 10-INCH 12-INCH	607.0412 12-INCH	1	1	1	1	1	1	1	1	1	7.0	---	---	---	TEMPORARY CONNECTION
612+26, 5.5 LT	---	---	---	---	---	---	---	---	---	---	---	---	13.2	---	---	---	---
50+75, 5.5 RT	---	---	---	---	---	---	---	---	---	---	---	---	---	---	---	625.00	---
614+89, 33.0 LT	---	---	---	---	---	---	---	---	---	---	---	---	---	---	15.1	622.90	---
614+98, 38.0 LT	---	---	---	---	---	---	---	---	---	---	---	---	---	---	---	---	---
617+55, 29.7 RT	---	---	---	---	---	---	---	---	---	---	---	---	---	---	---	---	---
619+43, 35.1 LT	---	---	---	---	---	---	---	---	---	---	---	---	---	---	19.0	596.05	---
621+99, 29 RT	---	---	---	---	---	---	---	---	---	---	---	---	---	---	20.1	585.23	---
626+34, 49.2 LT	---	---	---	---	---	---	---	---	---	---	---	---	---	---	---	587.00	---
626+17, 47.2 LT	---	---	---	---	---	---	---	---	---	---	---	---	---	---	---	---	---
626+31, 37.4 LT	---	---	---	---	---	---	---	---	---	---	---	---	---	---	---	---	---
626+50 LT	---	---	---	---	---	---	---	---	---	---	---	---	---	---	---	---	---
630+74, 30.5 RT	---	---	---	---	---	---	---	---	---	---	---	---	---	---	---	---	---
638+94, 5.5 LT	---	---	---	---	---	---	---	---	---	---	---	---	---	---	---	---	---
639+05, 48.4 LT	---	---	---	---	---	---	---	---	---	---	---	---	---	---	---	---	---
639+65, 5.5 LT	---	---	---	---	---	---	---	---	---	---	---	---	---	---	---	---	---
TOTAL	13	47	17	11	2	1	1	5	2	1	1	38	---	---	---	---	FIELD VERIFY LOCATION OF MANHOLE

ADJUSTING STORM SEWER

LOCATION	ADJUSTING TEMPORARY MANHOLE COVER COVER PLATE	611.8110	611.8120.S	REMARKS
638+98, 5.5 LT	1	1	1	---
639+65, 5.5 LT	1	1	1	---
640+07, 5.5 LT	1	1	1	---
110+40, 18.2 LT	1	1	1	---
TOTAL	4	4	4	---

MOBILIZATION

ITEM	619.1000	EACH	REMARKS
MOILIZATION	1	1	---

DRAIN SLOTTED VANE

STATION	LOCATION	EACH	REMARKS
50+81	STH 57	1	45 LF
TOTAL		1	

FENCE SAFETY

STATION	TO	STATION	LOCATION	LF	REMARKS
609+50	-	611+50	STH 42 RT	200	ROCK CUT
617+65	-	618+25	STH 42 LT	60	---
626+14	-	626+47	STH 42 LT	160	---
628+20	-	628+75	STH 42 RT	55	---
628+87	-	629+32	STH 42 RT	45	---
638+77	-	639+35	STH 42 LT	135	---
UNDISTRIBUTED			STH 42	500	TRENCHES
TOTAL				1175	

RECONNECTING EXISTING STORM SEWER LATERAL

STATION	LOCATION	EACH	REMARKS
616+16	STH 42 LT	1	---
618+29	STH 42 RT	1	---
619+61	STH 42 RT	1	---
TOTAL		3	---

MAINTENANCE AND REPAIR OF HAUL ROADS (4610-06-71)

ITEM	618.0100	EACH	REMARKS
MAINTENANCE AND REPAIR OF HAUL ROADS	1	1	---

REMOVING LANDSCAPING ITEMS FROM PARCEL 37

ITEM	SPV.0105.02	LS	REMARKS
REMOVING LANDSCAPING ITEMS FROM PARCEL 37	1	1	---

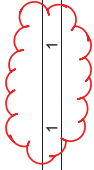
Addendum No. 1
ID 4610-06-71
Revised Sheet 221
April 30, 2015

Addendum No. 1
 ID 4610-06-71
 Revised Sheet 229
 April 30, 2015

3

TRAFFIC CONTROL DETOUR SIGNS: STAGE 2A - HWY 42 (COUNTRY WALK DR - HWY 57) & WEST GATEWAY DR (CLOSED) CONTINUED

SIGN NO.	LOCATION	SIGN CODE	WX H SIZE	SERVICE IN	APPROX. SERVICE PERIOD	DAYS	643.3000 DETOUR SIGNS	643.0420 BARRICADES TYPE III	643.0705 WARNING LIGHTS TYPE A	643.1050 SIGNS PORTABLE CHANGEABLE MESSAGE	643.0920 COVERING SIGNS	CYCLES OF	EACH	REMARKS
54	200' N OF HWY 57 INTERSECTION ON COUNTRYWALK DR	MO 4-8	24"x12"	1	45	45								
	"	M 3-3	24"x12"	1	45	45								42
	"	M 1-6	24"x24"	1	45	45								AHEAD
	"	MO 6-1	21"x21"	1	45	45								
55	NE QUAD OF HWY 57 & COUNTRYWALK DR INTERSECTION	MO 4-8	24"x12"	1	45	45								42
	"	M 3-3	24"x12"	1	45	45								RIGHT
	"	M 1-6	24"x24"	1	45	45								42
	"	MO 6-1	21"x21"	1	45	45								RIGHT
56	ACROSS FROM SIGN # 55 (LEFT SIDE)	MO 4-8	24"x12"	1	45	45								42
	"	M 3-3	24"x12"	1	45	45								RIGHT
	"	M 1-6	24"x24"	1	45	45								42
	"	MO 6-1	21"x21"	1	45	45								RIGHT
57	350' E OF SIGN # 55 (ON HWY 57 SB)	MO 4-8	24"x12"	1	45	45								42
	"	M 3-3	24"x12"	1	45	45								42
	"	M 1-6	24"x24"	1	45	45								42
	"	MO 5-1-R	21"x21"	1	45	45								42
58	MODIFY J1-1 (JCT 42)	MO 4-8-A	24"x18"	1	45	45								42
	"	M 1-6	EXISTING											42
59	J2-2 (S-42-AH LT; N-42-AH RT)	M 1-6	EXISTING											42
60	D 1-3 (LT-EPHRAIM; ELLISON BAY/GILLS ROCK-RT)	MO 6-1	21"x21"	1	45	45								42
61	MODIFY J4-1 (42 LT & RT)	W 20-2A	48"x48"	1	45	45								RIGHT
62	ABOVE J1-2 (JCT 57; JCT ZZ)	MO 4-8	24"x12"	1	45	45								42
63	MODIFY J2-2 (S-57-AH LT; S-42-AH)	M 3-3	EXISTING											42
	"	M 1-6	EXISTING											42
	"	MO 5-1-L	21"x21"	1	45	45								42
64	D1-3 (AH-EPHRAIM/FISH CREEK; LT-BAILEYS HARBOR)	MO 4-8	24"x12"	1	45	45								42
65	LT OF J3-1 (S-57-LT)	M 3-3	24"x12"	1	45	45								42
	"	M 1-6	24"x24"	1	45	45								42
	"	MO 6-1	21"x21"	1	45	45								LEFT
66	ACROSS FROM SIGN # 26 (RIGHT SIDE)	MO 4-8	24"x12"	1	45	45								42
	"	M 3-3	24"x12"	1	45	45								LEFT
	"	M 1-6	24"x24"	1	45	45								42
	"	MO 6-1	21"x21"	1	45	45								LEFT
67	ABOVE J4-1 (S-57)	MO 4-8	24"x12"	1	45	45								42
	"	M 3-3	24"x12"	1	45	45								42
	"	M 1-6	24"x24"	1	45	45								42
	"	MO 6-1	21"x21"	1	45	45								AHEAD
68	NW QUAD OF HWY 57 & HWY 42 INTERSECTION	R 11-2	48"x30"	1	45	90								42
69	BELOW SIGN #68	MO 4-9-L	30"x24"	1	45	45								42
70	FIELD LOCATED - STH 42 NB	PCMS												AHEAD
71	FIELD LOCATED - STH 42 SB	PCMS												AHEAD
		PAGE SUBTOTAL		35			1,575	45	90	14				
		STAGE TOTAL		78			3,510	90	180	14				



3

TRAFFIC CONTROL DETOUR SIGNS: STAGE 2B - HWY 42 (MAPLE DR - SCANDIA RD) (CLOSED)

SIGN NO.	LOCATION	SIGN CODE	SIZE W X H	SERVICE IN	NUMBER IN PERIOD	APPROX DETOUR SIGN TYPE III	643.0420 BARRICADES TYPE III	643.0705 WARNING LIGHTS TYPE A	643.1050 SIGNS PORTABLE MESSAGE	643.0920 COVERING SIGNS NUMBER OF CYCLES	EACH	REMARKS
GAP IN SIGN NUMBERING (72-74)												
75	LT OF IJ-2 (N-42-AH; S-57-AH RT) ON HWY 42 (NB)	W 20-2-A	48"x48"	1	50		50					
76	LT OF IJ-2 (N-42-AH; S-57-AH RT) ON HWY 42 (NB)	MO 4-8	24"x12"	1	50		50					
	"	M 3-1	24"x12"	1	50		50					42
	"	M 1-6	24"x24"	1	50		50					
	"	MO 5-1-R	21"x21"	1	50		50					
77	LT OF IJ3-1 (ZZ-RT) ON HWY 42 (NB-FAR RT)	MO 4-8	24"x12"	1	50		50					
	"	M 3-1	24"x12"	1	50		50					42
	"	M 1-6	24"x24"	1	50		50					
	"	MO 6-1	21"x21"	1	50		50					RIGHT
78	250' E OF HWY 42 INTERSECTION ON CTY ZZ (SB)	MO 4-8	24"x12"	1	50		50					
	"	M 3-1	24"x12"	1	50		50					42
	"	M 1-6	24"x24"	1	50		50					AHEAD
	"	MO 6-1	21"x21"	1	50		50					
79	300' W OF WOODCREST RD INTERSECTION ON CTY ZZ (SB)	MO 4-8	24"x12"	1	50		50					
	"	M 3-1	24"x12"	1	50		50					42
	"	M 1-6	24"x24"	1	50		50					
	"	MO 5-1-L	21"x21"	1	50		50					
80	SW QUAD OF WOODCREST RD & CTY ZZ (SB) INTERSECTION (NEAR RT)	MO 4-8	24"x12"	1	50		50					
	"	M 3-1	24"x12"	1	50		50					42
	"	M 1-6	24"x24"	1	50		50					LEFT
	"	MO 6-1	21"x21"	1	50		50					
81	NE QUAD OF WOODCREST RD & CTY ZZ (SB) INTERSECTION (FAR LT)	MO 4-8	24"x12"	1	50		50					
	"	M 3-1	24"x12"	1	50		50					42
	"	M 1-6	24"x24"	1	50		50					LEFT
	"	MO 6-1	21"x21"	1	50		50					
82	200' N OF CTY ZZ INTERSECTION ON WOODCREST RD (EB)	MO 4-8	24"x12"	1	50		50					
	"	M 3-1	24"x12"	1	50		50					42
	"	M 1-6	24"x24"	1	50		50					AHEAD
	"	MO 6-1	21"x21"	1	50		50					
83	100' S OF S. CRESCENT RD INTERSECTION ON WOODCREST RD (EB)	MO 4-8	24"x12"	1	50		50					
	"	M 3-1	24"x12"	1	50		50					42
	"	M 1-6	24"x24"	1	50		50					
	"	MO 5-1-L	21"x21"	1	50		50					
84	RT OF STOP SIGN @ WOODCREST RD & SCANDIA RD INTERSECTION	MO 4-8	24"x12"	1	50		50					
	"	M 3-1	24"x12"	1	50		50					42
	"	M 1-6	24"x24"	1	50		50					LEFT
	"	MO 6-1	21"x21"	1	50		50					
85	100' W OF WOODCREST RD INTERSECTION ON SCANDIA RD (NB)	MO 4-8	24"x12"	1	50		50					
	"	M 3-1	24"x12"	1	50		50					42
	"	M 1-6	24"x24"	1	50		50					AHEAD
	"	MO 6-1	21"x21"	1	50		50					
86	300' E OF HWY 42 INTERSECTION ON SCANDIA RD (NB)	MO 4-8-A	24"x18"	1	50		50					42
	"	M 1-6	24"x24"	1	50		50					
87	RT OF STOP SIGN @ SCANDIA RD & HWY 42 INTERSECTION	M 3-1	24"x12"	1	50		50					42
	"	M 1-6	24"x24"	1	50		50					RIGHT
	"	MO 6-1	21"x21"	1	50		50					
	PAGE SUBTOTAL			46	2,300	0	0	0	0	0	0	

Addendum No. 1
 ID 4610-06-71
 Revised Sheet 231
 April 30, 2015

3

TRAFFIC CONTROL DETOUR SIGNS, STAGE 2B - HWY 42 (MAPLE DR - SCANDIA RD) (CLOSED) CONTINUED

SIGN NO.	LOCATION	SIGN CODE	SIZE	NUMBER IN SERVICE	APPROX. SERVICE PERIOD	DETOUR SIGNS	BARRICADES TYPE III	643.0705 WARNING LIGHTS TYPE A	643.1050 SIGNS PORTABLE MESSAGE	643.0920 COVERING SIGNS	REMARKS
88	300' N OF SIGN # 89 ON HWY 42 (SB)	W 20-2A	48"x48"	1	50	50					
89	300' N OF SIGN # 90 ON HWY 42 (SB)	MO 4-8	24"x12"	1	50	50					
	"	M 3-3	24"x12"	1	50	50					
	"	M 1-6	24"x24"	1	50	50					42
	"	MO 5-1-L	21"x21"	1	50	50					
90	NW QUAD OF HWY 42 & SCANDIA RD INTERSECTION (NEAR RT)	MO 4-8	24"x12"	1	50	50					
	"	M 3-3	24"x12"	1	50	50					42
	"	M 1-6	24"x24"	1	50	50					LEFT
91	SE QUAD OF HWY 42 & SCANDIA RD INTERSECTION (FAR LT)	MO 4-8	24"x12"	1	50	50					
	"	M 3-3	24"x12"	1	50	50					42
	"	M 1-6	24"x24"	1	50	50					LEFT
	"	MO 6-1	21"x21"	1	50	50					
92	300' W OF WOODCREST RD INTERSECTION ON SCANDIA RD (SB)	MO 4-8	24"x12"	1	50	50					
	"	M 3-3	24"x12"	1	50	50					42
	"	M 1-6	24"x24"	1	50	50					
	"	MO 5-1-R	21"x21"	1	50	50					
93	SW QUAD OF SCANDIA RD & WOODCREST RD INTERSECTION (NEAR RT)	MO 4-8	24"x12"	1	50	50					
	"	M 3-3	24"x12"	1	50	50					42
	"	M 1-6	24"x24"	1	50	50					RIGHT
	"	MO 6-1	21"x21"	1	50	50					
94	NE QUAD OF SCANDIA RD & WOODCREST RD INTERSECTION (FAR LT)	MO 4-8	24"x12"	1	50	50					
	"	M 3-3	24"x12"	1	50	50					42
	"	M 1-6	24"x24"	1	50	50					RIGHT
	"	MO 6-1	21"x21"	1	50	50					
95	150' S OF SCANDIA RD INTERSECTION ON WOODCREST RD (SB)	MO 4-8	24"x12"	1	50	50					
	"	M 3-3	24"x12"	1	50	50					42
	"	M 1-6	24"x24"	1	50	50					AHEAD
	"	MO 6-1	21"x21"	1	50	50					
96	500' N OF CTY ZZ INTERSECTION ON WOODCREST RD (SB)	MO 4-8	24"x12"	1	50	50					
	"	M 3-3	24"x12"	1	50	50					42
	"	M 1-6	24"x24"	1	50	50					
	"	MO 5-1-R	21"x21"	1	50	50					
97	RT OF STOP SIGN @ CTY ZZ & WOODCREST RD (WB) INTERSECTION	MO 4-8	24"x12"	1	50	50					
	"	M 3-3	24"x12"	1	50	50					42
	"	M 1-6	24"x24"	1	50	50					RIGHT
	"	MO 6-1	21"x21"	1	50	50					
98	150' W OF WOODCREST RD INTERSECTION ON CTY ZZ (WB)	MO 4-8	24"x12"	1	50	50					
	"	M 3-3	24"x12"	1	50	50					42
	"	M 1-6	24"x24"	1	50	50					AHEAD
	"	MO 6-1	21"x21"	1	50	50					
99	MODIFY J1-2 (JCT 42; END - ZZ) ON CTY ZZ (WB)	MO 4-8-A	24"x18"	1	50	50					
	"	M 1-6	EXISTING	1	50	50					
100	RT OF STOP SIGN @ CTY ZZ (WB) & STH 42 INTERSECTION	M 3-3	24"x12"	1	50	50					
	"	M 1-6	24"x24"	1	50	50					42
	"	MO 6-1	21"x21"	1	50	50					LEFT
	PAGE SUBTOTAL			45		2,250	0	0	0	0	0
	STAGE TOTAL			91	0	4,550	0	0	0	0	0

3

Addendum No. 1
 ID 4610-06-71
 Revised Sheet 232
 April 30, 2015

TRAFFIC CONTROL DETOUR SIGNS: STAGE 3A & 3B - HWY 42 (ONE-LANE BETWEEN COUNTRY WALK DR - SCANDIA RD) NB DIRECTION

SIGN NO.	LOCATION	SIGN CODE	WX H SIZE	NUMBER IN SERVICE	APPROX. SERVICE PERIOD	DAYS	643.3000 DETOUR SIGNS	643.0420 BARRICADES TYPE III	643.0705 WARNING LIGHTS TYPE A	643.1050 SIGNS PORTABLE MESSAGE	643.0920 COVERING SIGNS	CYCLES OF EACH	REMARKS
110	GAP IN SIGN NUMBERING (101-109)	W 20-2-A	48"x48"	1	95	95							
111	300' N OF SIGN # 111 ON HWY 42 (SB)	MO 4-8	24"x12"	1	95	95							
	300' N OF SIGN # 112A ON HWY 42 (SB)	M 3-3	24"x12"	1	95	95							
	"	M 1-6	24"x24"	1	95	95							42
	"	MO 5-1-L	21"x21"	1	95	95							
112A	NW QUAD OF HWY 42 & SCANDIA RD INTERSECTION (NEAR RT)	MO 4-8	24"x12"	1	95	95							42
	"	M 3-3	24"x12"	1	95	95							LEFT
	"	M 1-6	24"x24"	1	95	95							
	"	MO 6-1	21"x21"	1	95	95							
112B	SW QUAD OF HWY 42 & SCANDIA RD INTERSECTION	R 11-2	48"x30"	1	95	95				190			
112C	BELOW SIGN # 112 B ON HWY 42 (SB)	MO 4-9-L	30"x24"	1	95	95							
113	SE QUAD OF HWY 42 & SCANDIA RD INTERSECTION (FAR LT)	MO 4-8	24"x12"	1	95	95							
	"	M 3-3	24"x12"	1	95	95							
	"	M 1-6	24"x24"	1	95	95							42
	"	MO 6-1	21"x21"	1	95	95							LEFT
114	RT OF STOP SIGN @ SCANDIA RD & HWY 42 INTERSECTION	M 3-1	24"x12"	1	95	95							42
	"	M 1-6	24"x24"	1	95	95							RIGHT
	"	MO 6-1	21"x21"	1	95	95							
115	300' W OF WOODCREST RD INTERSECTION ON SCANDIA RD (SB)	MO 4-8	24"x12"	1	95	95							
	"	M 3-3	24"x12"	1	95	95							
	"	M 1-6	24"x24"	1	95	95							42
	"	MO 5-1-R	21"x21"	1	95	95							
116	SW QUAD OF SCANDIA RD & WOODCREST RD INTERSECTION (NEAR RT)	MO 4-8	24"x12"	1	95	95							
	"	M 3-3	24"x12"	1	95	95							
	"	M 1-6	24"x24"	1	95	95							42
	"	MO 6-1	21"x21"	1	95	95							RIGHT
117	NE QUAD OF SCANDIA RD & WOODCREST RD INTERSECTION (FAR LT)	MO 4-8	24"x12"	1	95	95							
	"	M 3-3	24"x12"	1	95	95							
	"	M 1-6	24"x24"	1	95	95							42
	"	MO 6-1	21"x21"	1	95	95							RIGHT
118	150' S OF SCANDIA RD INTERSECTION ON WOODCREST RD (SB)	MO 4-8	24"x12"	1	95	95							
	"	M 3-3	24"x12"	1	95	95							
	"	M 1-6	24"x24"	1	95	95							42
	"	MO 6-1	21"x21"	1	95	95							AHEAD
119	150' S OF CTY ZZ (MAPLE RD) INTERSECTION ON WOODCREST RD (SB)	MO 4-8	24"x12"	1	95	95							
	"	M 3-3	24"x12"	1	95	95							
	"	M 1-6	24"x24"	1	95	95							42
	"	MO 6-1	21"x21"	1	95	95							AHEAD
120	150' S OF PLATEAU RD INTERSECTION ON WOODCREST RD (SB)	MO 4-8	24"x12"	1	95	95							
	"	M 3-3	24"x12"	1	95	95							
	"	M 1-6	24"x24"	1	95	95							42
	"	MO 6-1	21"x21"	1	95	95							AHEAD
121	500' N OF OLD STAGE RD INTERSECTION ON WOODCREST RD (SB)	MO 4-8	24"x12"	1	95	95							
	"	M 3-3	24"x12"	1	95	95							
	"	M 1-6	24"x24"	1	95	95							42
	"	MO 5-1-R	21"x21"	1	95	95							
				PAGE SUBTOTAL	46	4.370	95	190	0	0	0		

Addendum No. 1
 ID 4610-06-71
 Revised Sheet 233
 April 30, 2015

3

TRAFFIC CONTROL DETOUR SIGNS: STAGE 3A & 3B - HWY 42 (ONE-LANE BETWEEN COUNTRY WALK DR - SCANDIA RD) NB DIRECTION CONTINUED

SIGN NO.	LOCATION	SIGN CODE	SIZE	NUMBER IN SERVICE	APPROX. SERVICE PERIOD	DETOUR SIGNS	BARRICADES TYPE III	WARNING LIGHTS TYPE A	643.0705	643.1050	643.0920	COVERING SIGNS		REMARKS	
												CHANGABLE MESSAGE DAYS	PORTABLE SIGNS		NUMBER OF CYCLES
122	RT OF R1-1 (STOP SIGN) @ WOODCREST & OLD STAGE INTERSECTION	MO 4-8 M 3-3 M 1-6 MO 6-1	24"x12" 24"x12" 24"x24" 21"x21"	1 1 1 1	95 95 95 95	95 95 95 95									
123	200' W OF WOODCREST RD INTERSECTION ON OLD STAGE RD (WB)	MO 4-8 M 3-3 M 1-6 MO 6-1	24"x12" 24"x12" 24"x24" 21"x21"	1 1 1 1	95 95 95 95	95 95 95 95								42 RIGHT	
124	200' W OF ORCHARD RD INTERSECTION ON OLD STAGE RD (SB)	MO 4-8 M 3-3 M 1-6 MO 6-1	24"x12" 24"x12" 24"x24" 21"x21"	1 1 1 1	95 95 95 95	95 95 95 95								42 AHEAD	
125	500' E OF HWY 57 INTERSECTION ON OLD STAGE RD (SB)	MO 4-8 M 3-3 M 1-6 MO 5-1-R	24"x12" 24"x12" 24"x24" 21"x21"	1 1 1 1	95 95 95 95	95 95 95 95								42 AHEAD	
126	RT OF R1-1 (STOP SIGN) @ OLD STAGE RD & HWY 57 INTERSECTION	MO 4-8 M 3-3 M 1-6 MO 6-1	24"x12" 24"x12" 24"x24" 21"x21"	1 1 1 1	95 95 95 95	95 95 95 95								42 RIGHT	
127	250' N OF OLD STAGE RD INTERSECTION ON HWY 57 (NB)	MO 4-8 M 3-3 M 1-6 MO 6-1	24"x12" 24"x12" 24"x24" 21"x21"	1 1 1 1	95 95 95 95	95 95 95 95								42 AHEAD	
128	200' N OF ORCHARD RD INTERSECTION ON HWY 57 (NB)	MO 4-8 M 3-3 M 1-6 MO 6-1	24"x12" 24"x12" 24"x24" 21"x21"	1 1 1 1	95 95 95 95	95 95 95 95								42 AHEAD	
129	250' W OF COUNTRYWALK INTERSECTION ON HWY 57 (NB)	MO 4-8 M 3-3 M 1-6 MO 5-1-L	24"x12" 24"x12" 24"x24" 21"x21"	1 1 1 1	95 95 95 95	95 95 95 95								42	
130	RT OF W1-7 (NIGHT ARROW) @ COUNTRYWALK & HWY 57 (FACING HWY 57 NB - NEAR RT)	MO 4-8 M 3-3 M 1-6 MO 6-1	24"x12" 24"x12" 24"x24" 21"x21"	1 1 1 1	95 95 95 95	95 95 95 95								42 LEFT	
131	NW QUAD OF HWY 57 & COUNTRYWALK DR INTERSECTION (FACING NB HWY 57 - FAR LT)	MO 4-8 M 3-3 M 1-6 MO 6-1	24"x12" 24"x12" 24"x24" 21"x21"	1 1 1 1	95 95 95 95	95 95 95 95								42 LEFT	
132	200' N OF HWY 57 INTERSECTION ON COUNTRYWALK DR (NB)	MO 4-8 M 3-3 M 1-6 MO 6-1	24"x12" 24"x12" 24"x24" 21"x21"	1 1 1 1	95 95 95 95	95 95 95 95								42 AHEAD	
				PAGE SUBTOTAL	44	4,180	4,180	0	0	0	0	0	0		

3

Addendum No. 1
 ID 4610-06-71
 Revised Sheet 234
 April 30, 2015

3

TRAFFIC CONTROL DETOUR SIGNS: STAGE 3C & 3D - HWY 42 (ONE-LANE BETWEEN HIGHLAND RD - SCANDIA RD) NB DIRECTION

SIGN NO.	LOCATION	SIGN CODE	SIZE W X H	NUMBER IN SERVICE	APPROX. SERVICE PERIOD	643.3000 DETOUR SIGNS	643.0420 BARRICADES TYPE III	643.0705 WARNING LIGHTS TYPE A	643.1050 PORTABLE SIGNS	643.0920 COVERING SIGNS	OF		REMARKS
											MESSAGE DAYS	CHANGEOVER CYCLES	
151	GAP IN SIGN NUMBERING (139-150) RT OF RT-1 (STOP SIGN) @ COUNTRY LANE & HWY 42	M 3-3 M 1-6 MO 6-1	24"x12" 24"x24" 21"x21"	1 1 1	28 28 28	28 28 28							42 LEFT
152	500' S OF HWY 42 INTERSECTION ON COUNTRY LANE (NB)	MO 4-8-A M 1-6	24"x18" 24"x24"	1 1	28 28	28 28							42
153	200' N OF HWY 57 INTERSECTION ON COUNTRY LANE	MO 4-8 M 3-3 M 1-6 MO 6-1	24"x12" 24"x12" 24"x24" 21"x21"	1 1 1 1	28 28 28 28	28 28 28 28							42 AHEAD
154	NW QUAD OF COUNTRY LANE INTERSECTION ON HWY 57 (SB-FAR LT)	MO 4-8 M 3-3 M 1-6 MO 6-1	24"x12" 24"x12" 24"x24" 21"x21"	1 1 1 1	28 28 28 28	28 28 28 28							42 LEFT
155	SE QUAD OF COUNTRY LANE INTERSECTION ON HWY 57 (NB-NEAR RT)	MO 4-8 M 3-3 M 1-6 MO 6-1	24"x12" 24"x12" 24"x24" 21"x21"	1 1 1 1	28 28 28 28	28 28 28 28							42 LEFT
156	500' S OF SIGN # 155 ON HWY 57 (NB)	MO 4-8 M 3-3 M 1-6 MO 5-1-L	24"x12" 24"x12" 24"x24" 21"x21"	1 1 1 1	28 28 28 28	28 28 28 28							42 LEFT
157	500' S OF SIGN # 156 ON HWY 57 (NB)	M 3-3 M 1-6 W 20-2-A	24"x12" 24"x24" 48"x48"	1 1 1	28 28 28	28 28 28							42
158	250' N OF OLD STAGE RD INTERSECTION ON HWY 57 (NB)	MO 4-8 M 3-3 M 1-6 MO 6-1	24"x12" 24"x12" 24"x24" 21"x21"	1 1 1 1	28 28 28 28	28 28 28 28							42 AHEAD
159	RT OF STOP SIGN @ OLD STAGE RD & HWY 57 INTERSECTION	MO 4-8 M 3-3 M 1-6 MO 6-1	24"x12" 24"x12" 24"x24" 21"x21"	1 1 1 1	28 28 28 28	28 28 28 28							42 RIGHT
160	500' E OF HWY 57 INTERSECTION ON OLD STAGE RD (SB)	MO 4-8 M 3-3 M 1-6 MO 5-1-R	24"x12" 24"x12" 24"x24" 21"x21"	1 1 1 1	28 28 28 28	28 28 28 28							42
161	200' W OF ORCHARD RD INTERSECTION ON OLD STAGE RD (SB)	MO 4-8 M 3-3 M 1-6 MO 6-1	24"x12" 24"x12" 24"x24" 21"x21"	1 1 1 1	28 28 28 28	28 28 28 28							42 AHEAD
162	200' W OF WOODCREST RD INTERSECTION ON OLD STAGE RD (WB)	MO 4-8 M 3-3 M 1-6 MO 6-1	24"x12" 24"x12" 24"x24" 21"x21"	1 1 1 1	28 28 28 28	28 28 28 28							42 AHEAD
				PAGE SUBTOTAL	44	1,232	0	0	0	0	0		0

3

Addendum No. 1
 ID 4610-06-71
 Revised Sheet 235
 April 30, 2015

TRAFFIC CONTROL DETOUR SIGNS: STAGE 3C & 3D - HWY 42 (ONE-LANE BETWEEN HIGHLAND RD - SCANDIA RD) NB DIRECTION CONTINUED

SIGN NO.	LOCATION	SIGN CODE	SIZE	NUMBER IN SERVICE	APPROX. SERVICE PERIOD	DETOUR SIGNS	643.0000	643.0420	643.0705	643.1050	643.0920	REMARKS	
												TYPE III	TYPE A
163	RT OF R1-1 (STOP SIGN) @ WOODCREST & OLD STAGE INTERSECTION	MO 4-8 M 3-3 M 1-6 MO 6-1	24"x12" 24"x12" 24"x24" 21"x21"	1 1 1 1	28 28 28 28	28 28 28 28	28 28 28 28						42 RIGHT
164	500' N OF OLD STAGE RD INTERSECTION ON WOODCREST RD (SB)	MO 4-8 M 3-3 M 1-6 MO 5-1-R	24"x12" 24"x12" 24"x24" 21"x21"	1 1 1 1	28 28 28 28	28 28 28 28	28 28 28 28						42
165	150' S OF PLATEAU RD INTERSECTION ON WOODCREST RD (SB)	MO 4-8 M 3-3 M 1-6 MO 6-1	24"x12" 24"x12" 24"x24" 21"x21"	1 1 1 1	28 28 28 28	28 28 28 28	28 28 28 28						42 AHEAD
166	150' S OF CTY ZZ (MAPLE RD) INTERSECTION ON WOODCREST RD (SB)	MO 4-8 M 3-3 M 1-6 MO 6-1	24"x12" 24"x12" 24"x24" 21"x21"	1 1 1 1	28 28 28 28	28 28 28 28	28 28 28 28						42 AHEAD
167	150' S OF SCANDIA RD INTERSECTION ON WOODCREST RD (SB)	MO 4-8 M 3-3 M 1-6 MO 6-1	24"x12" 24"x12" 24"x24" 21"x21"	1 1 1 1	28 28 28 28	28 28 28 28	28 28 28 28						42 AHEAD
168	SW QUAD OF SCANDIA RD & WOODCREST RD INTERSECTION (NEAR RT)	MO 4-8 M 3-3 M 1-6 MO 6-1	24"x12" 24"x12" 24"x24" 21"x21"	1 1 1 1	28 28 28 28	28 28 28 28	28 28 28 28						42 AHEAD
169	NE QUAD OF SCANDIA RD & WOODCREST RD INTERSECTION (FAR LT)	MO 4-8 M 3-3 M 1-6 MO 6-1	24"x12" 24"x12" 24"x24" 21"x21"	1 1 1 1	28 28 28 28	28 28 28 28	28 28 28 28						42 RIGHT
170	300' W OF WOODCREST RD INTERSECTION ON SCANDIA RD (SB)	MO 4-8 M 3-3 M 1-6 MO 6-1	24"x12" 24"x12" 24"x24" 21"x21"	1 1 1 1	28 28 28 28	28 28 28 28	28 28 28 28						42 RIGHT
171	RT OF R1-1 (STOP SIGN) @ SCANDIA RD & N SPRING RD INTERSECTION	MO 4-8 M 3-3 M 1-6 MO 6-1	24"x12" 24"x12" 24"x24" 21"x21"	1 1 1 1	28 28 28 28	28 28 28 28	28 28 28 28						42 LEFT
172	300' N OF SCANDIA RD INTERSECTION ON N. SPRING RD (SB)	MO 4-8 M 3-3 M 1-6 MO 5-1-L	24"x12" 24"x12" 24"x24" 21"x21"	1 1 1 1	28 28 28 28	28 28 28 28	28 28 28 28						42
173	150' S OF HILL RD INTERSECTION ON N. SPRING RD (SB)	MO 4-8 M 3-3 M 1-6 MO 6-1	24"x12" 24"x12" 24"x24" 21"x21"	1 1 1 1	28 28 28 28	28 28 28 28	28 28 28 28						42 AHEAD
174	SW QUAD OF HILL RD & N. SPRING RD INTERSECTION	MO 4-8 M 3-3 M 1-6 MO 6-1	24"x12" 24"x12" 24"x24" 21"x21"	1 1 1 1	28 28 28 28	28 28 28 28	28 28 28 28						42 RIGHT
PAGE SUBTOTAL						48	1,344	0	0	0	0	0	0

TRAFFIC CONTROL DETOUR SIGNS: STAGE 3C & 3D - HWY 42 (ONE-LANE BETWEEN HIGHLAND RD - SCANDIA RD) NB DIRECTION CONTINUED

SIGN NO.	LOCATION	SIGN CODE	SIZE	NUMBER IN	APPROX. SERVICE PERIOD	DETOUR SIGNS	BARRICADES TYPE III	643.0705 WARNING LIGHTS TYPE A	643.1050 PORTABLE MESSAGE CHANGABLE	643.0920 COVERING SIGNS	REMARKS	
											DAYS	DAYS
175	SE QUAD OF HILL RD & HWY 42 (NB) INTERSECTION (FAR LT)	MO 4-8	24"x12"	1	28	28						
	"	M 3-3	24"x12"	1	28	28						
	"	M 1-6	24"x24"	1	28	28						42 LEFT
	"	MO 6-1	21"x21"	1	28	28						
176	50' N OF HILL RD INTERSECTION ON HWY 42 (SB-NEAR RT)	MO 4-8	24"x12"	1	28	28						
	"	M 3-3	24"x12"	1	28	28						
	"	M 1-6	24"x24"	1	28	28						42 LEFT
	"	MO 6-1	21"x21"	1	28	28						
177	300' N OF HILL RD INTERSECTION ON HWY 42 (SB)	MO 4-8	24"x12"	1	28	28						
	"	M 3-3	24"x12"	1	28	28						
	"	M 1-6	24"x24"	1	28	28						42
	"	MO 5-1-L	21"x21"	1	28	28						
178	500' N OF SIGN # 177 ON HWY 42 (SB)	W 20-2-A	48"x48"	1	28	28						
179	SW QUAD OF HWY 42 & HILL RD INTERSECTION	R 11-3	60"x30"	1	28	28	117	234				1/2 MILES
180	BELOW SIGN # 179 ON HWY 42 (SB)	MO 4-9-L	30"x24"	1	28	28						
181	J2-2 (S-42-AH LT; N-42-AH RT) ON HWY 57 (NB)			1								SOUTH 42 AHEAD LEFT
182	D 1-3 (LT-EPPHRAIM; ELLISON BAYGILLS ROCK-RT) ON HWY 57 (NB)			1								LEFT EPPHRAIM
183	MODIFY J4-1 (42 LT & RT) ON HWY 57 (NB)	M 1-6	EXISTING									42
	"	MO 6-1	21"x21"	1	28	28						
184	NW QUAD OF HWY 57 & HWY 42 INTERSECTION	R 11-2	48"x30"	1	28	28	28	56				
				17		476	145	290	0		2	
				109		3,052	145	290	0		2	
STAGE TOTAL												

Addendum No. 1
ID 4610-06-71
Added Sheet 235A
April 30, 2015

Addendum No. 1
 ID 4610-06-71
 Added Sheet 235B
 April 30, 2015

3

TRAFFIC CONTROL DETOUR SIGNS: WINTER SHUTDOWN - HWY 42 (ONE-LANE BETWEEN HIGHLAND RD - SCANDIA RD) NB DIRECTION

SIGN NO.	LOCATION	SIGN CODE	SIZE W X H	NUMBER IN SERVICE	APPROX. SERVICE PERIOD DAYS	DETOUR SIGNS	BARRICADES TYPE III	643.0705 WARNING LIGHTS TYPE A	643.1050 PORTABLE MESSAGE CHANGEBLE DAYS	643.0920 COVERING SIGNS	643.0920 OF CYCLES EACH	REMARKS
200	300' N OF SIGN # 201 ON HWY 42 (SB)	W 20-2-A	48"x48"	1	104	104						
201	300' N OF SIGN # 202 ON HWY 42 (SB)	MO 4-8	24"x12"	1	104	104						
	"	M 3-3	24"x12"	1	104	104						
	"	M 1-6	24"x24"	1	104	104						42
	"	MO 5-1-L	21"x21"	1	104	104						
202	NW QUAD OF HWY 42 & SCANDIA RD INTERSECTION (NEAR RT)	MO 4-8	24"x12"	1	104	104						
	"	M 3-3	24"x12"	1	104	104						
	"	M 1-6	24"x24"	1	104	104						42
	"	MO 6-1	21"x21"	1	104	104						LEFT
203	SW QUAD OF HWY 42 & SCANDIA RD INTERSECTION	R 11-2	48"x30"	1	104	104	104	208				
204	BELOW SIGN # 112 B ON HWY 42 (SB)	MO 4-9-L	30"x24"	1	104	104						
205	SE QUAD OF HWY 42 & SCANDIA RD INTERSECTION (FAR LT)	MO 4-8	24"x12"	1	104	104						
	"	M 3-3	24"x12"	1	104	104						
	"	M 1-6	24"x24"	1	104	104						42
	"	MO 6-1	21"x21"	1	104	104						LEFT
206	RT OF STOP SIGN @ SCANDIA RD & HWY 42 INTERSECTION	M 3-1	24"x12"	1	104	104						
	"	M 1-6	24"x24"	1	104	104						42
	"	MO 6-1	21"x21"	1	104	104						RIGHT
207	300' W OF WOODCREST RD INTERSECTION ON SCANDIA RD (SB)	MO 4-8	24"x12"	1	104	104						
	"	M 3-3	24"x12"	1	104	104						
	"	M 1-6	24"x24"	1	104	104						42
	"	MO 5-1-R	21"x21"	1	104	104						
208	SW QUAD OF SCANDIA RD & WOODCREST RD INTERSECTION (NEAR RT)	MO 4-8	24"x12"	1	104	104						
	"	M 3-3	24"x12"	1	104	104						
	"	M 1-6	24"x24"	1	104	104						42
	"	MO 6-1	21"x21"	1	104	104						RIGHT
209	NE QUAD OF SCANDIA RD & WOODCREST RD INTERSECTION (FAR LT)	MO 4-8	24"x12"	1	104	104						
	"	M 3-3	24"x12"	1	104	104						
	"	M 1-6	24"x24"	1	104	104						42
	"	MO 6-1	21"x21"	1	104	104						RIGHT
210	150' S OF SCANDIA RD INTERSECTION ON WOODCREST RD (SB)	MO 4-8	24"x12"	1	104	104						
	"	M 3-3	24"x12"	1	104	104						
	"	M 1-6	24"x24"	1	104	104						42
	"	MO 6-1	21"x21"	1	104	104						AHEAD
211	500' N OF CTY ZZ INTERSECTION ON WOODCREST RD (SB)	MO 4-8	24"x12"	1	104	104						
	"	M 3-3	24"x12"	1	104	104						
	"	M 1-6	24"x24"	1	104	104						42
	"	MO 5-1-R	21"x21"	1	104	104						
212	RT OF STOP SIGN @ CTY ZZ & WOODCREST RD (WB) INTERSECTION	MO 4-8	24"x12"	1	104	104						
	"	M 3-3	24"x12"	1	104	104						
	"	M 1-6	24"x24"	1	104	104						42
	"	MO 6-1	21"x21"	1	104	104						RIGHT
	PAGE SUBTOTAL			42	4,368	104	208	0	0	0		

3

Addendum No. 1
 ID 4610-06-71
 Added Sheet 235C
 April 30, 2015

3

TRAFFIC CONTROL DETOUR SIGNS: WINTER SHUTDOWN - HWY 42 (ONE-LANE BETWEEN HIGHLAND RD. - SCANDIA RD.) NB DIRECTION CONTINUED

SIGN NO.	LOCATION	SIGN CODE	SIZE	NUMBER IN SERVICE	APPROX. SERVICE PERIOD	643.3000 DETOUR SIGNS	643.0420 BARRICADES TYPE III	643.0705 WARNING LIGHTS TYPE A	643.1050 PORTABLE MESSAGE CHANGABLE	643.0920 COVERING SIGNS	REMARKS	
											DAYS	CYCLES
213	150' W OF WOODCREST RD INTERSECTION ON CTY ZZ (WB)	MO 4-8 M 3-3 M 1-6	24"x12" 24"x12" 24"x24"	1 1 1	104 104 104	104 104 104						42 AHEAD
214	300' E OF SIGN # 215 ON CTY ZZ (WB)	MO 4-8 M 3-3 M 1-6 MO 5-1-L	24"x12" 24"x12" 24"x24" 21"x21"	1 1 1 1	104 104 104 104	104 104 104 104						42
215	RT OF R1-1 (STOP SIGN) @ CTY ZZ (WB) & STH 42 INTERSECTION	MO 4-8 M 3-3 M 1-6 MO 6-1	24"x12" 24"x12" 24"x24" 21"x21"	1 1 1 1	104 104 104 104	104 104 104 104						42 LEFT
GAP IN SIGN NUMBERING (216)												
217	MODIFY J2-2 (S-57-AH LT; S-42-AH)	MO 4-8 M 3-3 M 1-6 MO 5-1-L	24"x12" EXISTING EXISTING 21"x21"	1 1 1 1	104 104 104 104	104 104 104 104						42
218	D1-3 (AH-EPHRAIM/FISH CREEK; LT-BAILEYS HARBOR)	MO 4-8	24"x12"	1	104	104					1	1 AH-EPHRAIM/FISH CREEK
219	LT OF J3-1 (S-57-LT)	MO 4-8 M 3-3 M 1-6 MO 6-1	24"x12" 24"x12" 24"x24" 21"x21"	1 1 1 1	104 104 104 104	104 104 104 104						42 LEFT
220	NW QUAD OF HWY 57 & HWY 42 INTERSECTION	R 11-2	48"x30"	1	104	104	104	208				
221	BELOW SIGN # 220	MO 4-9L	30"x24"	1	104	104						
222	MODIFY J4-1 (42 LT & RT)	M 1-6	EXISTING	1	104	104						42 RIGHT
223	ACROSS FROM SIGN # 26 (RIGHT SIDE)	MO 6-1 MO 4-8 M 3-3 M 1-6 MO 6-1	21"x21" 24"x12" 24"x12" 24"x24" 21"x21"	1 1 1 1 1	104 104 104 104 104	104 104 104 104 104						42 LEFT
224	D 1-3 (LT-EPHRAIM; ELLISON BAY/GILLS ROCK-RT)	MO 4-8	24"x12"	1	104	104					1	1 LEFT EPHRAIM
225	ABOVE J4-1 (S-57)	M 3-3 M 1-6 MO 6-1	24"x12" 24"x12" 24"x24" 21"x21"	1 1 1 1	104 104 104 104	104 104 104 104						42 AHEAD
226	J2-2 (S-42-AH LT; N-42-AH RT) ON HWY 57 (NB)	MO 4-8	24"x12"	1	104	104					1	1 SOUTH 42 AHEAD LEFT
227	350' E OF SIGN # 228 ON HWY 57 (SB)	M 3-3 M 1-6 MO 5-1-R MO 4-8 M 3-3 M 1-6 MO 6-1	24"x12" 24"x12" 24"x24" 21"x21" 24"x12" 24"x12" 24"x24" 21"x21"	1 1 1 1 1 1 1 1	104 104 104 104 104 104 104 104	104 104 104 104 104 104 104 104						42
228	NE QUAD OF HWY 57 & COUNTRYWALK DR INTERSECTION	MO 4-8 M 3-3 M 1-6 MO 6-1	24"x12" 24"x12" 24"x24" 21"x21"	1 1 1 1	104 104 104 104	104 104 104 104						42 RIGHT
PAGE SUBTOTAL				37	3,848	104	208	0	3			

3

TRAFFIC CONTROL DETOUR SIGNS: WINTER SHUTDOWN - HWY 42 (ONE-LANE BETWEEN HIGHLAND RD - SCANDIA RD) NB DIRECTION CONTINUED

SIGN NO.	LOCATION	SIGN CODE	SIZE	NUMBER IN SERVICE	APPROX. SERVICE PERIOD	DETOUR SIGNS	BARRICADES TYPE III	643.0705 WARNING LIGHTS TYPE A	643.1050 PORTABLE MESSAGE CHANGABLE DAYS	643.0920 COVERING SIGNS TYPE II	REMARKS	
											DAYS	DAYS
229	ACROSS FROM SIGN # 228 (LEFT SIDE)	MO 4-8 M 3-3 M 1-6 MO 6-1	24"x12" 24"x12" 24"x24" 21"x21"	1 1 1 1	104 104 104 104	104 104 104 104						42 RIGHT
230	RT OF W1-7 (NIGHT ARROW) @ COUNTRYWALK & HWY 57 (FACING HWY 57 NB)	MO 4-8 M 3-3 M 1-6 MO 6-1	24"x12" 24"x12" 24"x24" 21"x21"	1 1 1 1	104 104 104 104	104 104 104 104						42 LEFT
231	500' W OF COUNTRYWALK INTERSECTION ON HWY 57	MO 4-8 M 3-3 M 1-6 MO 5-1-L	24"x12" 24"x12" 24"x24" 21"x21"	1 1 1 1	104 104 104 104	104 104 104 104						42
232	500' W OF SIGN # 52 ON HWY 57	M 3-3 M 1-6 W 20-2-A	24"x12" 24"x24" 48"x48"	1 1 1	104 104 104	104 104 104						42
GAP IN SIGN NUMBERING (233)												
234	200' N OF HWY 57 INTERSECTION ON COUNTRYWALK DR	MO 4-8 M 3-3 M 1-6 MO 6-1	24"x12" 24"x12" 24"x24" 21"x21"	1 1 1 1	104 104 104 104	104 104 104 104						42 AHEAD
GAP IN SIGN NUMBERING (235)												
236	300' S OF SIGN # 238 ON COUNTRYWALK DR (NB)	MO 4-8-A M 1-6	24"x18" 24"x24"	1 1	104 104	104 104						42
237	RT OF R 1-1 (STOP SIGN) AT HWY 42 ON COUNTRYWALK DR (NB)	M 3-3 M 1-6 MO 6-1	24"x12" 24"x24" 21"x21"	1 1 1	104 104 104	104 104 104						42 LEFT
				PAGE SUBTOTAL	24	2,496	0	0	0	0	0	
STAGE TOTAL				103	10,712	208	416	0	0	0	3	

Addendum No. 1
ID 4610-06-71
Added Sheet 235D
April 30, 2015

TRAFFIC CONTROL DETOUR SIGNS: PROJECT TOTAL SUMMARY

STAGE	SERVICE NUMBER IN	APPROX. SERVICE PERIOD	DETOUR SIGNS	BARRICADES TYPE III	WARNING LIGHTS TYPE A	PORTABLE MESSAGE CHANGABLE	COVERING SIGNS	643.0920	REMARKS
1	72	45	3,240	90	180	14	5	5	
2A	78	45	3,510	90	180	14	3	3	
2B	91	50	4,550	-	-	-	2	2	
3A & 3B	97	95	9,215	190	380	-	2	2	
3C & 3D	109	28	3,052	145	290	-	2	2	
WINTER SHUTDOWN	103	104	10,712	208	416	0	3	3	
PROJECT TOTAL	550	367	34,279	723	1,446	28	-	15	

+ ITEM SHOWN ELSEWHERE

TRAFFIC CONTROL PROJECT 4610-06-71

643.0100 LS 1

TRAFFIC CONTROL PROJECT 4610-06-71

643.2000 LS 1

TRAFFIC CONTROL DETOUR PROJECT 4610-06-71

Addendum No. 1
ID 4610-06-71
Revised Sheet 236
April 30, 2015

Addendum No. 1
ID 4610-06-71
Added Sheet 236A
April 30, 2015

TRAFFIC CONTROL SUMMARY

LOCATION	643.0300 DRUMS			643.0420 BARRICADES			643.0705 WARNING LIGHTS TYPE A			643.0715 WARNING LIGHTS TYPE C			643.0900 SIGNS			
	APPROX. SERVICE PERIOD	NO. IN SERVICE	DAYS	NO. IN SERVICE	DAYS	NO. IN SERVICE	DAYS	NO. IN SERVICE	DAYS	NO. IN SERVICE	DAYS	NO. IN SERVICE	DAYS	NO. IN SERVICE	DAYS	REMARKS
30+00 TO 34+30	45	5	225	6	270	10	450	---	---	---	---	4	180	---	---	
50+00 TO 57+31	45	5	225	16	720	22	990	5	225	5	225	7	315	---	---	
STAGE 1 TOTAL		5	225	22	990	32	1440	5	225	5	225	11	495	---	---	
603+00 TO 612+80	45	---	---	12	540	13	585	---	---	---	---	1	45	---	---	
30+00 TO 34+30	45	---	---	5	225	8	360	---	---	---	---	2	90	---	---	
STAGE 2A TOTAL		0	0	17	765	21	945	0	0	0	0	3	135	---	---	
STAGE 2B TOTAL	50	---	---	16	800	24	1200	---	---	---	---	16	800	---	---	
603+00 TO 612+80	45	42	1890	6	270	6	270	10	450	5	225	5	225	---	---	
30+00 TO 34+30	45	---	---	5	225	8	360	---	---	---	---	2	90	---	---	
50+00 TO 57+31	45	14	630	---	---	---	---	14	630	8	360	2	360	---	---	
612+80 TO 616+90	45	14	630	2	90	---	---	---	---	2	90	6	270	---	---	
70+00 TO 71+38	45	9	405	---	---	---	---	---	---	9	405	6	270	---	---	
616+90 TO 622+60	45	20	900	3	135	---	---	---	---	2	90	10	450	---	---	
90+00 TO 90+74	45	7	315	---	---	---	---	---	---	7	315	8	360	---	---	
622+60 TO 636+50	45	68	3060	4	180	2	90	19	855	20	900	20	900	---	---	
636+50 TO EOP	45	14	630	1	45	2	90	---	---	---	---	13	585	---	---	
STAGE 3A TOTAL		188	8460	21	945	18	810	63	2835	78	3510	84	4200	---	---	
603+00 TO 612+80	50	39	1950	5	250	4	200	2	100	11	550	5	250	---	---	
40+00 TO 42+16	50	8	400	---	---	---	---	8	400	5	250	2	100	---	---	
612+80 TO 616+90	50	14	700	2	100	---	---	---	---	2	100	6	300	---	---	
60+00 TO 61+30	50	6	300	---	---	---	---	---	---	6	300	7	350	---	---	
616+90 TO 622+60	50	24	1200	3	150	2	100	6	300	11	550	8	400	---	---	
80+00 TO 80+74	50	4	200	---	---	---	---	---	---	4	200	21	1050	---	---	
622+60 TO 636+50	50	57	2850	4	200	2	100	9	450	21	1050	8	400	---	---	
100+00 TO 101+95	50	8	400	---	---	---	---	---	---	8	400	3	150	---	---	
636+50 TO EOP	50	23	1150	3	150	4	200	18	900	12	600	12	600	---	---	
STAGE 3B TOTAL		183	9150	17	850	12	600	63	3150	84	4200	84	4200	---	---	
BOP - SOUTHBOUND	14	20	280	5	70	7	98	1	14	8	112	8	112	---	---	
EOP - NORTHBOUND	14	21	294	7	98	12	168	17	238	5	70	5	70	---	---	
STAGE 3C TOTAL		41	574	12	168	19	266	18	252	13	182	13	182	---	---	
BOP - NORTHBOUND	14	20	280	6	84	8	112	8	112	8	112	8	112	---	---	
EOP - SOUTHBOUND	14	6	84	3	42	6	84	1	14	6	84	6	84	---	---	
STAGE 3D TOTAL		26	364	9	126	14	196	9	126	14	196	14	196	---	---	
603+00 TO 612+80	104	39	4056	5	520	4	416	2	208	11	1144	11	1144	---	---	
40+00 TO 42+16	104	8	832	---	---	---	---	---	---	8	832	5	520	---	---	
60+00 TO 61+30	104	6	624	---	---	---	---	---	---	6	624	7	728	---	---	
616+90 TO 622+60	104	24	2496	3	312	2	208	6	624	11	1144	8	832	---	---	
80+00 TO 80+74	104	4	416	---	---	---	---	---	---	4	416	21	2184	---	---	
622+60 TO 636+50	104	57	5928	4	416	2	208	9	936	21	2184	3	312	---	---	
100+00 TO 101+95	104	8	832	---	---	---	---	---	---	8	832	12	1248	---	---	
636+50 TO EOP	104	23	2392	3	312	4	416	18	1872	12	1248	78	8112	---	---	
WINTER SHUTDOWN TOTAL		169	17576	15	1560	12	1248	61	6344	78	8112	297	17630	---	---	
PROJECT TOTAL		612	36349	129	6204	152	6705	219	12932	297	17630	297	17630	---	---	

+ ITEM SHOWN ELSEWHERE

MISCELLANEOUS QUANTITIES

COUNTY: DOOR

HWY: STH 42

SHEET: 236A

PLOT NAME: _____

PLOT BY: _____

PLOT DATE: _____

PLOT SCALE: 1:1

PROJECT NO: 4610 - 06 - 71

FILE NAME: _____

**TEMPORARY PAVEMENT MARKING
REFLECTIVE PAINT 4-INCH**

LOCATION	LF	REMARKS
COUNTRY WALK DRIVE	4430	DETOUR CL
HILL ROAD	840	DETOUR CL
N. SPRING ROAD	5280	DETOUR CL
SCANDIA ROAD	3380	DETOUR CL
WOODCREST ROAD	31680	DETOUR CL
CTH ZZ	5910	DETOUR CL
OLD STAGE ROAD	10560	DETOUR CL
STH 57	17440	DETOUR CL
COUNTRY LANE	12250	DETOUR CL
STH 42	8170	CL
TOTAL	99940	

LOCATING NO-PASSING ZONES

ROADWAY NAME	TERMINI	648.0100 MI	REMARKS
COUNTRY WALK DRIVE	STH 42 - STH 57	0.42	
HILL ROAD	STH 42 - N. SPRING ROAD	0.08	
N. SPRING ROAD	HILL ROAD - SCANDIA ROAD	0.50	
SCANDIA ROAD	STH 42 - WOODCREST ROAD	0.32	
WOODCREST ROAD	SCANDIA ROAD - CTH ZZ	0.51	
WOODCREST ROAD	CTH ZZ - OLD STAGE ROAD	1.51	
CTH ZZ	WOODCREST ROAD - STH 42	0.56	
OLD STAGE ROAD	WOODCREST ROAD - STH 57	1.00	
STH 57	OLD STAGE ROAD - ORCHARD DRIVE	1.15	
STH 57	ORCHARD DRIVE - STH 42	0.64	
STH 42	STA 600+00 - STA 640+86	0.77	
COUNTRY LANE	STH 57 - STH 42	1.16	
TOTAL		8.62	

PAVEMENT MARKING SYMBOLS EPOXY (YELLOW)

LOCATION	EACH	REMARKS
MILL ROAD PARKING LOT	4	
TOTAL	4	

LOCATION	LF	REMARKS
MILL ROAD PARKING LOT	1700	YELLOW
TOTAL	1700	

PAVEMENT MARKING PARKING STALL EPOXY

LOCATION	LF	REMARKS
MILL ROAD PARKING LOT	1700	YELLOW
TOTAL	1700	

PAVEMENT MARKING PARKING STALL EPOXY

STATION	TO	STATION	LOCATION	LF	REMARKS
613+00	-	617+00	STH 42 LT	170	
617+00	-	622+50	STH 42 LT	435	
617+00	-	622+50	STH 42 RT	275	
622+50	-	628+80	STH 42 RT	485	
622+50	-	628+80	STH 42 LT	560	
628+80	-	636+50	STH 42 RT	555	
628+80	-	636+50	STH 42 LT	825	
636+50	-	640+00	STH 42 RT	225	
636+50	-	640+00	STH 42 LT	280	
TOTAL				3810	

PAVEMENT MARKING CURB EPOXY

STATION	TO	STATION	LOCATION	LF	REMARKS
611+50	-	616+80	STH 42	535	
616+80	-	622+60	STH 42	520	
622+60	-	628+80	STH 42	325	
628+80	-	636+50	STH 42	375	
636+50	-	640+86	STH 42	300	
TOTAL				2055	

**PAVEMENT MARKING CONCRETE CORRUGATED
MEDIAN EPOXY**

STATION	TO	STATION	LOCATION	SF	REMARKS
636+73	-	647+0856	STH 42 LT	90	
TOTAL				90	

* CATEGORY 0020 ITEM

Addendum No. 1
ID 4610-06-71
Revised Sheet 238
April 30, 2015

SCHEDULE OF ITEMS

REVISED:

CONTRACT:
20150512038PROJECT(S):
4610-06-71FEDERAL ID(S):
WISC 2015295

CONTRACTOR : _____

LINE NO	ITEM DESCRIPTION	APPROX. QUANTITY AND UNITS	UNIT PRICE		BID AMOUNT	
			DOLLARS	CTS	DOLLARS	CTS
0440	416.1010 Concrete Surface Drains	1.000 CY
0450	440.4410.S Incentive IRI Ride	3,600.000 DOL	1.00000	.	3600.00	.
0460	455.0122 Asphaltic Material PG64-34	98.000 TON
0470	455.0605 Tack Coat	490.000 GAL
0480	460.1101 HMA Pavement Type E-1	1,736.000 TON
0490	460.2000 Incentive Density HMA Pavement	840.000 DOL	1.00000	.	840.00	.
0500	460.4000 HMA Cold Weather Paving	100.000 TON
0510	465.0120 Asphaltic Surface Driveways and Field Entrances	231.000 TON
0520	465.0125 Asphaltic Surface Temporary	2,654.000 TON
0530	465.0315 Asphaltic Flumes	7.000 SY
0540	520.8000 Concrete Collars for Pipe	6.000 EACH

SCHEDULE OF ITEMS

REVISED:

CONTRACT:
20150512038PROJECT(S):
4610-06-71FEDERAL ID(S):
WISC 2015295

CONTRACTOR : _____

LINE NO	ITEM DESCRIPTION	APPROX. QUANTITY AND UNITS	UNIT PRICE		BID AMOUNT	
			DOLLARS	CTS	DOLLARS	CTS
1090	616.0700.S Fence Safety	1,175.000 LF
1100	618.0100 Maintenance And Repair of Haul Roads (project) 01. 4610-06-71	1.000 EACH
1110	619.1000 Mobilization	1.000 EACH
1120	620.0100 Concrete Corrugated Median	230.000 SF
1130	624.0100 Water	206.300 MGAL
1140	625.0100 Topsoil	8,156.000 SY
1150	628.1504 Silt Fence	2,940.000 LF
1160	628.1520 Silt Fence Maintenance	936.000 LF
1170	628.1905 Mobilizations Erosion Control	15.000 EACH
1180	628.1910 Mobilizations Emergency Erosion Control	6.000 EACH
1190	628.2008 Erosion Mat Urban Class I Type B	5,554.000 SY

SCHEDULE OF ITEMS

REVISED:

CONTRACT:
20150512038PROJECT(S):
4610-06-71FEDERAL ID(S):
WISC 2015295

CONTRACTOR : _____

LINE NO	ITEM DESCRIPTION	APPROX. QUANTITY AND UNITS	UNIT PRICE		BID AMOUNT	
			DOLLARS	CTS	DOLLARS	CTS
1420	643.0100 Traffic Control (project) 01. 4610-06-71	1.000 EACH
1430	643.0300 Traffic Control Drums	36,349.000 DAY
1440	643.0420 Traffic Control Barricades Type III	6,927.000 DAY
1450	643.0705 Traffic Control Warning Lights Type A	8,151.000 DAY
1460	643.0715 Traffic Control Warning Lights Type C	12,932.000 DAY
1470	643.0900 Traffic Control Signs	17,630.000 DAY
1480	643.0920 Traffic Control Covering Signs Type II	15.000 EACH
1490	643.1050 Traffic Control Signs PCMS	28.000 DAY
1500	643.2000 Traffic Control Detour (project) 01. 4610-06-71	1.000 EACH
1510	643.3000 Traffic Control Detour Signs	34,279.000 DAY
1520	646.0106 Pavement Marking Epoxy 4-Inch	9,685.000 LF

SCHEDULE OF ITEMS

REVISED:

CONTRACT:
20150512038PROJECT(S):
4610-06-71FEDERAL ID(S):
WISC 2015295

CONTRACTOR : _____

LINE NO	ITEM DESCRIPTION	APPROX. QUANTITY AND UNITS	UNIT PRICE		BID AMOUNT	
			DOLLARS	CTS	DOLLARS	CTS
1530	646.0126 Pavement Marking Epoxy 8-Inch	185.000 LF
1540	646.0600 Removing Pavement Markings	7,400.000 LF
1550	647.0256 Pavement Marking Symbols Epoxy	4.000 EACH
1560	647.0456 Pavement Marking Curb Epoxy	2,055.000 LF
1570	647.0566 Pavement Marking Stop Line Epoxy 18-Inch	88.000 LF
1580	647.0656 Pavement Marking Parking Stall Epoxy	5,510.000 LF
1590	647.0766 Pavement Marking Crosswalk Epoxy 6-Inch	1,890.000 LF
1600	647.0856 Pavement Marking Concrete Corrugated Median Epoxy	90.000 SF
1610	648.0100 Locating No-Passing Zones	8.620 MI
1620	649.0200 Temporary Pavement Marking Reflective Paint 4-Inch	99,940.000 LF