



# Wisconsin Department of Transportation

May 1, 2015

**Division of Transportation Systems Development**

Bureau of Project Development  
 4802 Sheboygan Avenue, Rm 601  
 P O Box 7916  
 Madison, WI 53707-7916

Telephone: (608) 266-1631  
 Facsimile (FAX): (608) 266-8459

**NOTICE TO ALL CONTRACTORS:**

**Proposal #53: 1420-23-71, WISC 2015 306**  
**Fond du Lac Bypass**  
**CTH T Overpass**  
**USH 151**  
**Fond du Lac County**

**Letting of May 12, 2015**

This is Addendum No. 1, which provides for the following:

**Special Provisions**

Revised Special Provisions	
Article No.	Description
3	Prosecution and Progress

Added Special Provisions	
Article No.	Description
	Archaeological Coordination

**Schedule of Items**

Revised Bid Item Quantities					
Bid Item	Item Description	Unit	Old Quantity	Revised Quantity	Proposal Total
205.0100	Excavation Common	CY	40,494	-14,115	26,379
208.0100	Borrow	CY	538,664	-14,196	524,468
522.1024	AEW for CPRC 24-Inch	EA	20	-1	19
608.0324	SSPRC Class III 24-Inch	LF	314	-175	139
611.0530	Manhole Covers Type J	EA	4	-1	3
611.2004	Manholes 4-Ft Diameter	EA	3	-1	2
633.5200	Markers Culvert End	EA	61	-1	60
650.4000	Construction Staking Storm Sewer	EA	71	-2	69
650.5000	Construction Staking Base	LF	10,813	+1,622	12,435

## Plan Sheets

Revised Plan Sheets	
Plan Sheet	Plan Sheet Title (brief description of changes to sheet)
19	Const Detail – PVD for CTH T – slope intercepts have been updated
261	MQ – Earthwork Summary – revised quantities for Common and Borrow
267	MQ – Storm Sewer Pipe Items – revised quantity for 608.0324
269	MQ – Storm Sewer Items – revised quantities for 522.1024, 611.0530, 611.2004, 633.5200 and 650.4000
273	MQ – Construction Staking – revised quantity for 650.5000
552-555, 560-561, 568-575	Cross Section Sheets for Country Creek Drive, Driveway 'A', USH 151, Prairie Trail Connector, and Prairie Trail – added drainage blanket

Added Plan Sheets	
Plan Sheet	Plan Sheet Title (brief description of why sheet was added)
2A	Benchmarks

The responsibility for notifying potential subcontractors and suppliers of these changes remains with the prime contractor.

Sincerely,

*Mike Coleman*

Proposal Development Specialist  
Proposal Management Section

**ADDENDUM NO. 1**

**1420-23-71**

**May 1, 2015**

**Special Provisions**

**Revise the following special provision:**

**3. Prosecution and Progress.**

*Remove the first paragraph under the **CTH T Bridge Fills** subsection*

**61. Archaeological Coordination.**

An archaeologically significant site exists in the project area as follows:

<u>Site</u>	<u>Description</u>	<u>Location</u>
BFD-0060	Ledgeview Memorial Park	CTH T, Sta. 611+00 to Sta. 623+00, RT

WisDOT has received permission from the State Historic Preservation Office (SHPO) to work within the boundaries of this burial site. Do not use this site for borrow, waste disposal, or for the staging of personnel, equipment and/or supplies. Provide two weeks' notice to the Bureau of Technical Services, Environmental Services Section (ESS) before doing any work in the area of these sites. ESS will provide a qualified archaeologist to be on site at all times when work occurs near these sites. The contact at ESS is Lynn Cloud (608) 266-0099.

If a potentially significant archaeological feature or material is discovered during construction operations, the qualified archeologist will promptly coordinate with the engineer and with ESS to determine an appropriate course of action.  
(NER15-0122)

**Schedule of Items**

Attached, dated May 1, 2015, are the revised Schedule of Items Pages 2, 3, 8, 10, 11, 17, and 21.

**Plan Sheets**

The following 8½ x 11-inch sheets are attached and made part of the plans for this proposal:

Revised: 19, 261, 267, 269, 273, 552-555, 560, 561 and 568-575.

Added: 2A

END OF ADDENDUM

Addendum No. 1  
ID 1420-23-71  
Added Sheet 2A  
May 1, 2015

USH 151 - CTH V Benchmarks

BM	STA/OFF	DESCRIPTION	ELEVATION
A	---	BURY BOLT ON FLANGE OF HYDRANT, SW CORNER OF WILDLIFE DRIVE AND FAWN COURT	851.32
B	97+13, 56' RT	RR SPIKE IN PP #15-17E-2651/18, W. SIDE OF CTH V, 200' S. OF WILDLIFE DRIVE	845.24
C	112+41, 560' LT	RR SPIKE IN PP #15-17-25 6/27, N. SIDE OF REINHARDT ROAD, 500' E. OF CTH V	841.93
D	139+62, 67' RT	RR SPIKE IN PP #15-17-25.2.1.16/43, W. SIDE OF BIKE PATH, NW CORNER OF USH 45 AND USH 151 SOUTHBOUND	841.66
617	390+27, 23' LT	ALUMINUM WDOT CAP ON TOP OF PARAPET WALL FOR R-20-16, NW CORNER OF USH 45 BRIDGE OVER USH 151	849.01
616	386+11, 24' RT	ALUMINUM WDOT CAP ON TOP OF PARAPET WALL FOR B-20-147, SE CORNER OF USH 45 BRIDGE OVER USH 151	844.19
		ALUMINUM WDOT CAP ON TOP OF PARAPET WALL FOR B-20-148, SW CORNER OF USH 151 NORTHBOUND	
E	1320+83, 62' RT	BRIDGE OVER DENEVEU CREEK	826.71
F	1270+00, 123' LT	CHISELED CROSS ON SE BOLT OF TRANSMISSION POLE BASE, NW CORNER OF USH 151 AND CTH V	855.66
G	13+67, 31' LT	RR SPIKE IN PP, W. SIDE OF CTH V AT NE CORNER OF GAS STATION PROPERTY	863.62
H	143+50, 28' LT	NW BOLT ON FLANGE OF HYDRANT, W. SIDE OF CTH V AT HOUSE #1204	855.92

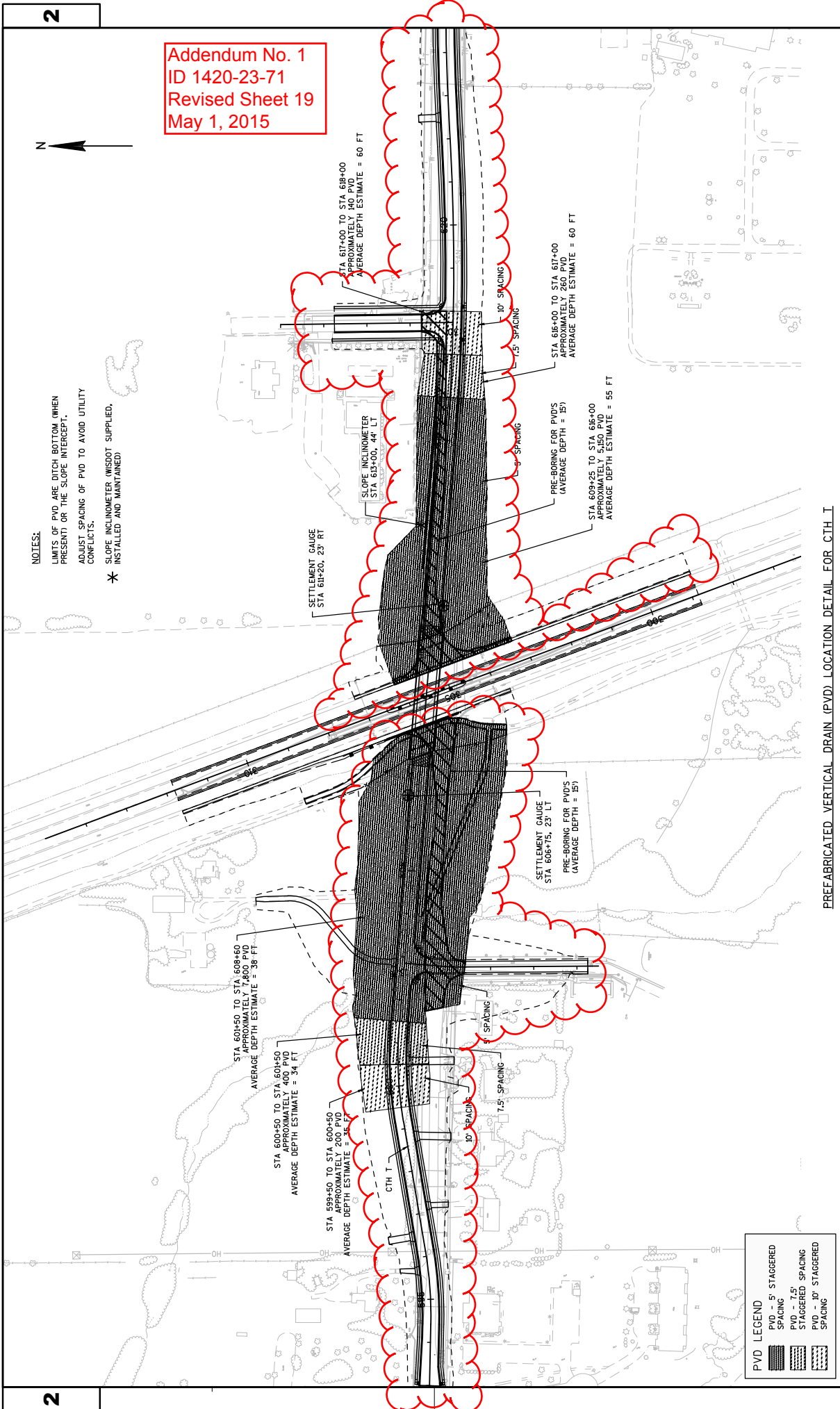
USH 151 - CTH T Benchmarks

BM	STA/OFF	DESCRIPTION	ELEVATION
J	607+92, 105' RT	RR SPIKE IN PP #15-18-18 11/25, SW CORNER OF USH 151 AND CTH T	814.71
K	599+70, 124' RT	RR SPIKE IN PP #15-18-18 3/26, S. SIDE OF CTH T AT HOUSE #1340	812.77
L	593+16, 41' LT	NW BOLT ON FLANGE OF HYDRANT, N. SIDE OF CTH T, 100' E. OF COUNTRY LANE	809.00
M	613+94, 41' RT	RR SPIKE IN PP #15-18-18 17/26, S. SIDE OF CTH T, 500' E. OF USH 151	830.11
N	619+62, 22' RT	RR SPIKE IN PP #15-18-18 23/26, S. SIDE OF CTH T, 200' E. OF FOURTH STREET WAY	835.65



Addendum No. 1  
ID 1420-23-71  
Revised Sheet 19  
May 1, 2015

NOTES:  
LIMITS OF PVD ARE DITCH BOTTOM (WHEN PRESENT) OR THE SLOPE INTERCEPT.  
ADJUST SPACING OF PVD TO AVOID UTILITY CONFLICTS.  
\* SLOPE INCLINOMETER (WISDOT SUPPLIED, INSTALLED AND MAINTAINED)



PVD LEGEND	
	PVD - 5' STAGGERED SPACING
	PVD - 7.5' STAGGERED SPACING
	PVD - 10' STAGGERED SPACING

PREFABRICATED VERTICAL DRAIN (PVD) LOCATION DETAIL FOR CTH T

EARTHWORK SUMMARY

DIVISION	FROM/TO STATION	LOCATION	EXCAVATION COMMON (ITEM #205.0100) (NOTE 1)		SALVAGED / UNUSABLE PAVEMENT MATERIAL (NOTE 4)	DRAINAGE BLANKET (ITEM SPV.00035.01.) (NOTE 5)	AVAILABLE MATERIAL (NOTE 5)	UNEXPANDED FILL	EXPANDED FILL FACTOR 1.10	MASS ORDINATE +/- (NOTE 7)	WASTE	BORROW (ITEM #208.0100) (NOTE 8) FACTOR 1.10	COMMENTS
			CUT (NOTE 2)	EBS EXCAVATION (NOTE 3)									
1	593+00.00 - 607+90.48	CTH T	2,279	506	0	0	2,785	83,172	91,489	-88,704			
	10+50.00 - 15+00.00	COUNTRY CREEK DRIVE	464	0	0	0	464	9,014	9,916	-9,452			
	15+00.00 - 19+00.00	DRIVEWAY A	437	0	0	0	437	8,644	9,509	-9,071			
	38+00.00 - 56+00.00	PRAIRIE TRAIL CTH T	289	0	0	0	289	13,425	14,768	-14,479			
	51+75.00 - 57+00.00	PRAIRIE TRAIL USH 151	162	0	0	0	162	2,382	2,620	-2,458			
	702+03.05 - 708+00.00	CTH T TEMPORARY	226	0	0	0	226	117	129	97			USE IN DIVISION 1
	21+48.77 - 24+43.74	COUNTRY CREEK DRIVE TEMPORARY	803	0	0	0	803	7	8	796			USE IN DIVISION 1
	82+10.70 - 84+31.67	PRAIRIE TRAIL USH 151 TEMPORARY	53	0	0	0	53	297	326	-274			
	89+78.40 - 99+44.40	DRIVEWAY A TEMPORARY	265	0	0	0	265	615	677	-412			
	----	DRAINAGE BLANKET	0	0	0	16,682	0	0	0	16,682			USE IN DIVISION 1
		DIVISION 1 SUBTOTAL	4,979	506	0	16,682	5,485	117,674	129,447	-107,274	0	107,274	
2	610+21.59 - 628+13.35	CTH T	4,996	506	0	0	5,502	47,205	51,926	-46,423			
	30+00.00 - 32+75.00	FOURTH STREET WAY	222	0	0	0	222	846	930	-709			
	68+58.60 - 71+58.40	CTH K	157	0	0	0	157	71	78	-79			USE IN DIVISION 2
	----	DRAINAGE BLANKET	0	0	0	11,629	0	0	0	11,629			USE IN DIVISION 2
		DIVISION 2 SUBTOTAL	5,374	506	0	11,629	5,880	48,121	52,934	-35,424	0	35,424	
3	298+85.00 - 311+80.00	USH 151	3,189	0	0	0	3,189	2,604	2,864	325	325		
		DIVISION 3 SUBTOTAL	3,189	0	0	0	3,189	2,604	2,864	325	325	0	
4	277+50/287+25	NB_Offramp.xml	2	0	0	0	2	61,740	67,914	-67,912			
	269+75/283+50	NB_Onramp.xml	0	0	0	0	0	98,610	108,471	-108,471			
	91+50/98+75	Old.V_South.xml	2,214	0	0	0	2,214	362	399	-1,815			
	133+00/136+75	CTH.V_NB_North.xml	348	0	0	0	348	21,178	23,296	-22,948			
	106+92.58/117+00	CTH.V_NB.xml	1,860	0	0	0	1,860	14,120	15,532	-13,673			
	51+00/57+00	Existing.Reinhardt.Ditch.xml	1,047	0	0	0	1,047	28	31	1,016			
	100+50/124+00	Reinhardt.xml	4,973	0	0	0	4,973	18,442	20,286	-15,313			
	50+50/53+12.62	Southbound.Temp_Trail.xml	0	0	166	0	0	66	72	-72			
	117+00/123+75	CTH.V_NB.xml	86	0	0	0	86	54,006	59,407	-59,321			
	122+00/123+75	CTH.V_SB.xml	67	0	0	0	67	10,169	11,186	-11,119			
	125+50/129+75	CTH.V_NB.xml	0	0	0	0	0	46,495	51,145	-51,145			
	225+50/229+50	CTH.V_SB.xml	39	0	0	0	39	34,516	37,968	-37,929			
	10+00/13+14.15	NB_Ramp_RA.xml	301	0	0	0	301	32,910	36,201	-35,901			
	----	Infield Drainage Swale	889	0	0	0	889	8,575	9,433	-8,544			
	----	Drainage Blanket	0	0	0	47,420	0	0	0	47,420			
		DIVISION 4 SUBTOTAL	11,825	0	166	47,420	11,824	401,218	441,340	-382,095	0	382,095	
		TOTAL	25,367	1,012	166	75,731	26,379	569,617	626,579	-524,468	325	524,793	
		GRAND TOTAL	26,379	1,012	166	75,731	26,379	569,617	626,579	-524,468	325	524,468	

- COMMON EXCAVATION IS THE SUM OF THE CUT AND EBS EXCAVATION COLUMNS. ITEM NUMBER 205.0100
- SALVAGED/UNUSABLE PAVEMENT MATERIAL IS INCLUDED IN CUT.
- EBS EXCAVATION TO BE BACKFILLED WITH BREAKER RUN.
- SALVAGED/UNUSABLE PAVEMENT MATERIAL = LENGTH \* TYPICAL WIDTH \* TYPICAL DEPTH
- AVAILABLE MATERIAL = CUT - SALVAGED/UNUSABLE PAVEMENT MATERIAL
- EXPANDED FILL FACTOR = 1.10. EXPANDED FILL = UNEXPANDED FILL \* FILL FACTOR
- THE MASS ORDINATE + OR - QTY CALCULATED FOR THE DIVISION. PLUS QUANTITY INDICATES AN EXCESS OF MATERIAL WITHIN THE DIVISION. MINUS QUANTITY INDICATES A SHORTAGE OF MATERIAL WITHIN THE DIVISION.
- BORROW = MASS ORDINATE / FILL FACTOR \* BORROW FACTOR

STORM SEWER PIPE ITEMS

STRUCTURE	FROM	TO	608.0312	608.0315	608.0318	608.0324	608.0330	608.0336	608.0412	SPV.0090.04
			SSPRC	SSPRC	SSPRC	SSPRC	SSPRC	SSPRC	SSPRC	PVC
			CLASS III	CLASS III	CLASS III	CLASS III	CLASS III	CLASS III	CLASS IV	6-INCH
			12-INCH	15-INCH	18-INCH	24-INCH	30-INCH	36-INCH	12-INCH	LF
			LF	LF	LF	LF	LF	LF	LF	LF
PROJECT 1420-23-71 CATEGORY CODE 0010										
CTH T										
INL 100.2	INL 100.1		35							
INL 101.2	AEW 101.1			29						
INL 101.3	INL 101.2			39						
INL 102.2	AEW 102.1			30						
INL 102.3	INL 102.2			39						
INL 103.2	AEW 103.1			25						
INL 103.3	INL 103.2			39						
INL 104.2	AEW 104.1			25						
INL 104.3	INL 104.2			39						
INL 105.2	AEW 105.1			25						
INL 106.2	AEW 106.1			25						
INL 107.2	AEW 107.1			24						
INL 108.2	AEW 108.1			21						
INL 109.2	AEW 109.1			25						
INL 110.2	AEW 110.1			25						
INL 111.2	AEW 111.1			25						
INL 112.2	AEW 112.1			25						
MH 113.2	AEW 113.1			59						
AEW 113.3	MH 113.2			78						
MH 113.4	MH 113.3			41						
INL 113.5	MH 113.4			56						
INL 113.6	MH 113.5			65						
INL 114.2	AEW 114.1			25						
INL 115.2	AEW 115.1			23						
INL 115.3	INL 115.2			12						
INL 116.2	AEW 116.1			30						
INL 117.2	AEW 117.1			30						
INL 118.2	AEW 118.1			24						
INL 119.2	AEW 119.1			24						
INL 120.2	AEW 120.1			20						
INL 121.2	AEW 121.1			77						
INL 121.3	INL 121.2									16
MH 122.2	AEW 122.1									50
MH 122.3	MH 122.2									80
INL 123.1	MH 123.2									152
AEW 123.3	MH 123.4									30
CTH T SUBTOTALS			35	846	271	139	50	30		16
CTH V										
1.2	1.1								28	
1.3	1.2								7	
2.2	2.1								46	
2.3	2.2								15	
3.2	3.1									
3.3	3.2									
3.4	3.3									
3.5	3.4									
CTH V SUBTOTALS			91	37					96	
PROJECT TOTALS			126	883	271	139	50	30	96	16

RIPRAP AND GEOTEXTILE FABRIC ITEMS

STATION TO STATION	DIR	LOCATION	606.0100	606.0200	645.0130
			RIPRAP	RIPRAP	GEOTEXTILE
			LIGHT	MEDIUM	GEOTEXTILE
			CY	CY	FABRIC
					TYPE R
					SY
PROJECT 1420-23-71 CATEGORY CODE 0010					
CTH T					
592+94	LT	CTH T		6	12
596+00	LT	CTH T		1	2
598+00	LT	CTH T		5	11
600+75	LT	CTH T		11	21
601+82 - 602+13	LT	CTH T/ DRIVEWAY 'A'		23	46
601+98 - 602+59	RT	CTH T/ COUNTRY CREEK DRIVE		33	66
603+39 - 603+82	LT	CTH T/ DRIVEWAY 'A'		21	42
603+81 - 604+25	RT	CTH T/ COUNTRY CREEK DRIVE		19	38
605+50	LT	CTH T		20	40
605+50	RT	CTH T		5	10
606+60 - 607+34	LT	CTH T		31	63
607+70 - 607+85	RT	CTH T		21	41
611+75	LT	CTH T		16	32
612+25	RT	CTH T		16	32
615+25	RT	CTH T		8	16
616+25	LT	CTH T		5	10
617+11	RT	CTH T		4	7
618+17	RT	CTH T		3	7
620+75	LT	CTH T		2	3
620+75	RT	CTH T		3	5
623+00	LT	CTH T		2	3
623+00	RT	CTH T		2	3
624+36 - 624+45	RT	CTH T		3	5
625+25	LT	CTH T		1	3
303+80	RT	USH 151 NB		7	14
305+59	RT	FOURTH STREET WAY		3	7
304+62	LT	FOURTH STREET WAY		5	9
45+12	RT	PRAIRIE TRAIL CONNECTOR		2	3
51+84	RT	PRAIRIE TRAIL		10	21
51+85	LT	PRAIRIE TRAIL		14	27
UNDISTRIBUTED				73	151
CTH T SUBTOTALS				375	750
CTH V					
261+95 - 285+80		USH 151 NB OFF-RAMP	0.3		3
277+25 - 283+75		USH 151 NB ON-RAMP	0.3		3
114+00 - 130+52		CTH V	5.0	6	43
132+18 - 137+25		CTH V	1.0		11
UNDISTRIBUTED				4	5
CTH V SUBTOTALS			8.0	10	65
PROJECT TOTALS			8.0	385	780

Addendum No. 1  
 ID 1420-23-71  
 Revised Sheet 267  
 May 1, 2015

**STORM SEWER ITEMS (CONTINUED)**

STRUCTURE NO.	STATION	OFFSET	DIR	LOCATION	522-1012	522-1015	522-1018	522-1024*	522-1030*	522-1036	611-0426	611-0530	611-0612	611-0624	611-0639	611-0647	611-0647	611-2004	611-2005	611-2006	611-3230	611-3947	650-4000
					AEW FOR CPRC 12-INCH EACH	AEW FOR CPRC 15-INCH EACH	AEW FOR CPRC 18-INCH EACH	AEW FOR CPRC 24-INCH EACH	AEW FOR CPRC 30-INCH EACH	RECONSTRUCTING MANHOLES EACH	MANHOLE COVERS TYPE J EACH	MANHOLE COVERS TYPE C EACH	INLET COVERS TYPE H EACH	INLET COVERS TYPE H EACH	INLET COVERS TYPE H-S EACH	INLET COVERS TYPE MS EACH	MANHOLES 4-FT DIA. EACH	MANHOLES 3-FT DIA. EACH	MANHOLES 6-FT DIA. EACH	INLETS 2X3-FT EACH	INLETS MEDIAN 1 GRATE EACH	INLETS MARKERS CULVERT END EACH	CONSTRUCTION STAKING STORM SEWER EACH
PROJECT 1420-23-71 CATEGORY CODE 0010																							
AEW 120.1	625+25	39.50'	LT	CTH T	1																		
INL 120.2	625+25	19.50'	LT	CTH T																			
AEW 121.1	624+52	41.26'	RT	CTH T																			
INL 121.2	625+25	19.50'	RT	CTH T																			
AEW 122.1	55+72	33.61'	LT	PRAIRIE TRAIL																			
MH 122.2	55+63	15.51'	RT	PRAIRIE TRAIL																			
MH 122.3	54+83	10.00'	RT	PRAIRIE TRAIL																			
MH 122.4	307+00	1.38'	RT	USH 151 MEDIAN																			
INL 123.1	304+50	0.50'	LT	USH 151 MEDIAN																			
MH 123.2	304+02	1.00'	LT	USH 151 MEDIAN																			
AEW 123.3	303+84	96.71'	RT	USH 151 NB DITCH																			
MH 123.4	304+01	72.52'	RT	USH 151 NB DITCH																			
CTH T SUBTOTALS					20	1	1	1	1	2	3	4	24	3	2	2	2	1	2	27	2	24	58
CTH V																							
1.1				RT																			
1.2				RT																			
1.3				LT																			
2.1				RT																			
2.2				RT																			
2.3				LT																			
3.1				LT																			
3.2				RT																			
3.3				RT																			
3.4				RT																			
3.5				RT																			
CTH V SUBTOTALS					2	1	1	1	1	2	3	4	32	3	2	2	2	1	2	35	2	27	69
PROJECT TOTALS					2	21	1	1	1	2	7	8	56	6	4	4	4	3	3	72	4	27	111

\* ADDITIONAL QUANTITIES SHOWN ELSEWHERE IN PLANS

Addendum No. 1  
ID 1420-23-71  
Revised Sheet 269  
May 1, 2015



SAWING PAVEMENT ITEMS

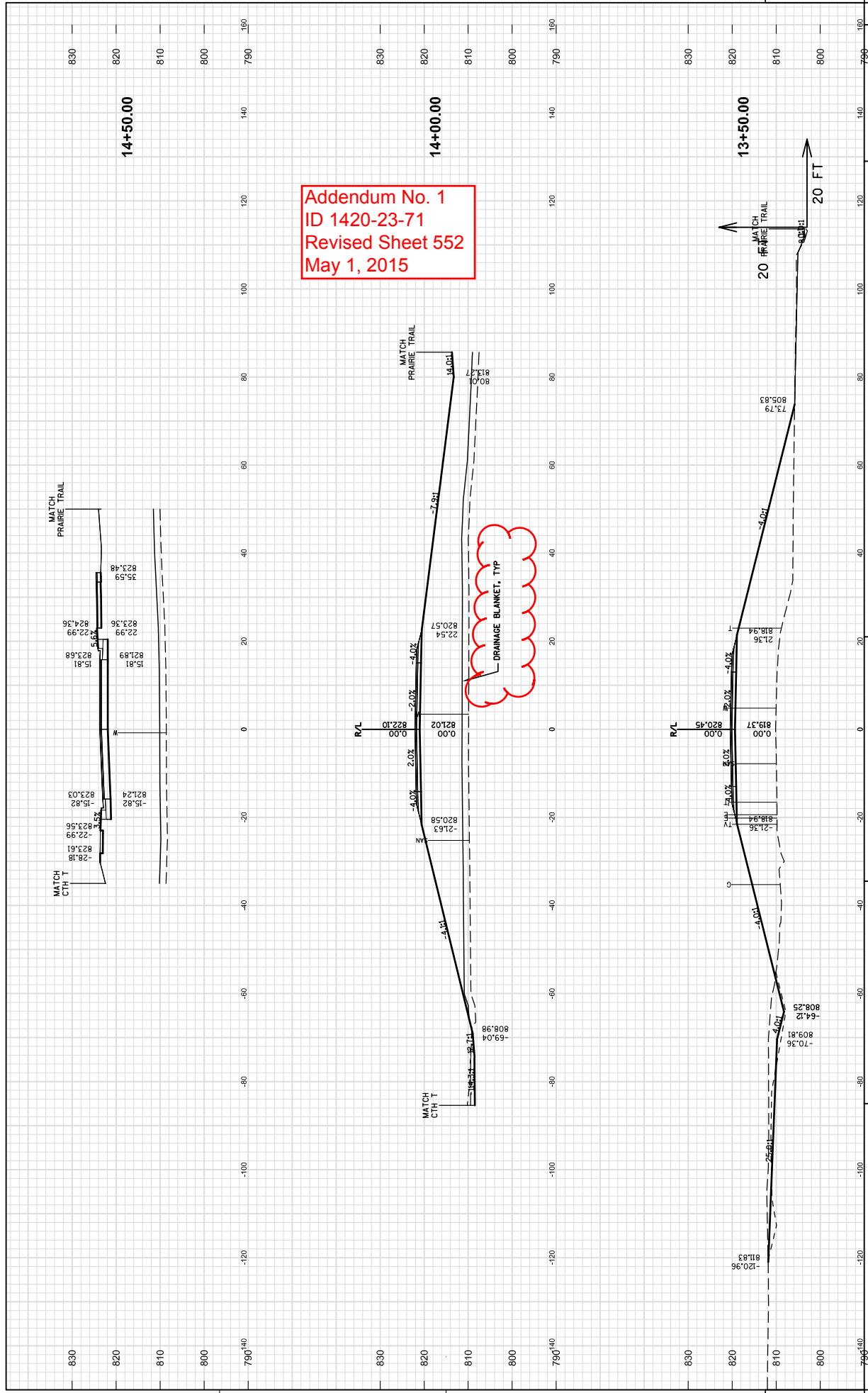
STATION - STATION	DIR	LOCATION	690.0150 ASPHALT LF	690.0250 CONCRETE LF
PROJECT 1420-23-71 CATEGORY CODE 0010				
CTH T				
592+83	RT	CTH T	--	5
593+00	LT & RT	CTH T	46	--
598+65	RT	CTH T	18	--
599+90	RT	CTH T	13	--
600+57	RT	CTH T	18	--
625+58	RT	CTH T	40	--
628+13	LT & RT	CTH T / CTH K	299	--
10+75	LT & RT	COUNTRY CREEK DR	26	--
10+92	LT	COUNTRY CREEK DR	39	--
32+75	LT & RT	FOURTH STREET WAY	36	5
51+75	LT & RT	PRAIRIE TRAIL	10	--
57+00	LT & RT	PRAIRIE TRAIL	10	--
298+85 - 306+95	RT	USH 151 NB OUTSIDE SHOULDER	--	810
302+60 - 306+94	RT	USH 151 NB MEDIAN SHOULDER	--	435
303+70 - 307+97	LT	USH 151 SB MEDIAN SHOULDER	--	430
303+70 - 311+80	LT	USH 151 SB OUTSIDE SHOULDER	--	810
CTH T SUBTOTALS			555	2,495
CTH V				
106+93	LT & RT	CTH V NB	30	--
91+50 - 97+36	LT & RT	OLD CTH V SOUTH	53	--
3+40	LT & RT	WILD LIFE DR	32	--
12+00	LT & RT	REINHARDT RD	20	--
50+50 - 53+13	RT	TEMPORARY TRAIL	30	--
---	---	UNDISTRIBUTED	35	--
CTH V SUBTOTALS			200	--
PROJECT TOTALS			755	2,495

Addendum No. 1  
 ID 1420-23-71  
 Revised Sheet 273  
 May 1, 2015

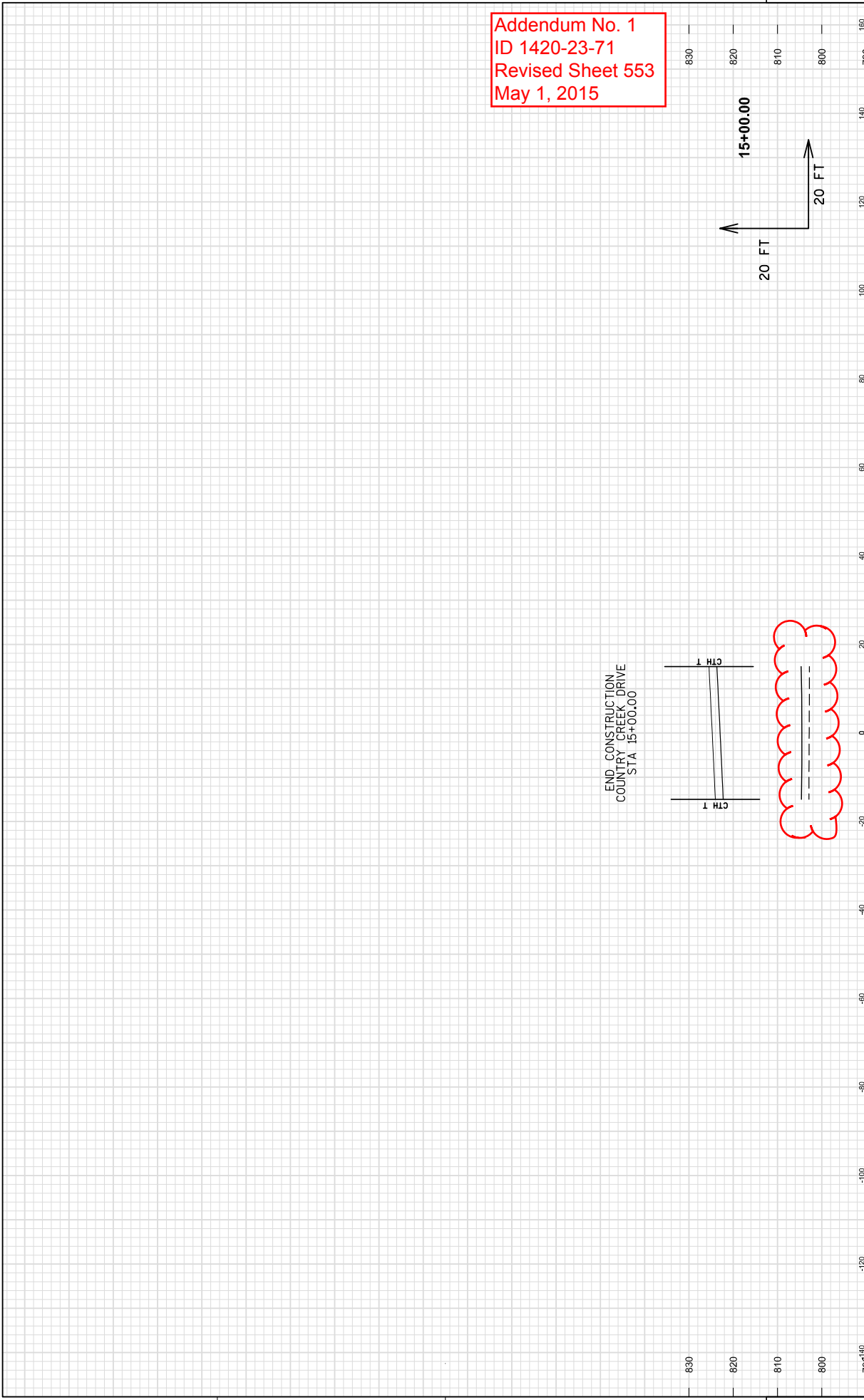
CONSTRUCTION SAWING ITEMS

STATION - STATION	LOCATION	650.4000 SUBGRADE LF	650.5000 BASE LF	650.6500 STRUCTURE LAYOUT LS	650.7000 CONCRETE PAVEMENT LF	650.9910 SUPPLEMENTAL CONTROL LS	650.9920 SLOPE STAKES LF
PROJECT 1420-23-71 CATEGORY CODE 0010							
CTH T							
593+00 - 607+67	CTH T	1,467	1,444	--	23	--	1,467
610+46 - 628+13	CTH T	1,768	1,744	--	24	--	1,768
10+75 - 15+00	COUNTRY CREEK DRIVE	425	425	--	--	--	425
15+00 - 19+00	DRIVEWAY 'A'	400	400	--	--	--	400
30+00 - 32+75	FOURTH STREET WAY	275	275	--	--	--	275
40+24 - 45+76	PRAIRIE TRAIL CONNECTOR	552	552	--	--	--	552
51+75 - 57+00	PRAIRIE TRAIL	525	525	--	--	--	525
298+85 - 311+80	USH 151	--	--	--	--	--	--
607+67 - 610+46	B-20-227	--	--	1	--	--	--
612+00 - 616+00	R-20-46	--	--	1	--	--	--
702+03 - 708+05	CTH T TEMPORARY WIDENING	602	602	--	--	--	602
21+49 - 24+44	TEMPORARY ACCESS ROAD	295	295	--	--	--	295
82+40 - 84+05	TEMPORARY PATH	165	165	--	--	--	165
89+78 - 99+44	TEMPORARY DRIVEWAY	966	966	--	--	--	966
CTH T SUBTOTALS		7,440	7,393	2	47	--	8,735
CTH V							
277+25 - 287+43	USH 151 NB OFF RAMP	1,018	--	--	--	--	1,018
269+57 - 283+75	USH 151 NB ON RAMP	1,418	--	--	--	--	1,418
106+93 - 124+05	CTH V NB	807	--	--	--	--	807
206+93 - 224+06	CTH V SB	1,713	815	--	--	--	1,713
10+00 - 13+14	RAB CTH V & NB RAMPS	314	--	--	--	--	314
125+40 - 129+87	CTH V NB	447	--	--	--	--	447
225+29 - 229+77	CTH V SB	448	--	--	--	--	448
132+67 - 137+25	CTH V NB	458	--	--	--	--	458
233+89 - 237+23	CTH V SB	334	--	--	--	--	334
91+50 - 99+10	OLD CTH V SOUTH	760	760	--	--	--	760
3+40 - 4+26	WILD LIFE DR	86	86	--	--	--	86
99+89 - 123+00	REINHARDT RD	2,311	2,311	--	--	--	2,311
50+00 - 58+31	REINHARDT SPECIAL DITCH	--	--	--	--	--	--
50+50 - 53+13	TEMP TRAIL WEST	263	263	--	--	--	263
CTH V SUBTOTALS		11,282	5,042	--	--	--	12,113
PROJECT TOTALS		18,722	12,435	2	47	1	20,848

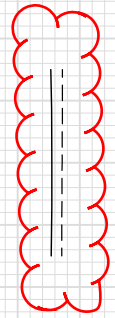
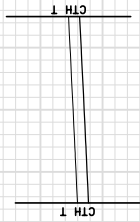
STAKING ITEMS FOR STORM SEWER, CURB & GUTTER, BARRIER WALL, AND PIPE CULVERTS SHOWN ELSEWHERE



Addendum No. 1  
ID 1420-23-71  
Revised Sheet 553  
May 1, 2015



END CONSTRUCTION  
COUNTRY CREEK DRIVE  
STA 15+00.00



20 FT  
15+00.00  
20 FT

9

9

PROJECT NO: 1420-23-71

HWY: USH 151

COUNTRY: FOND DU LAC

CROSS SECTIONS: COUNTRY CREEK DRIVE

SHEET

553

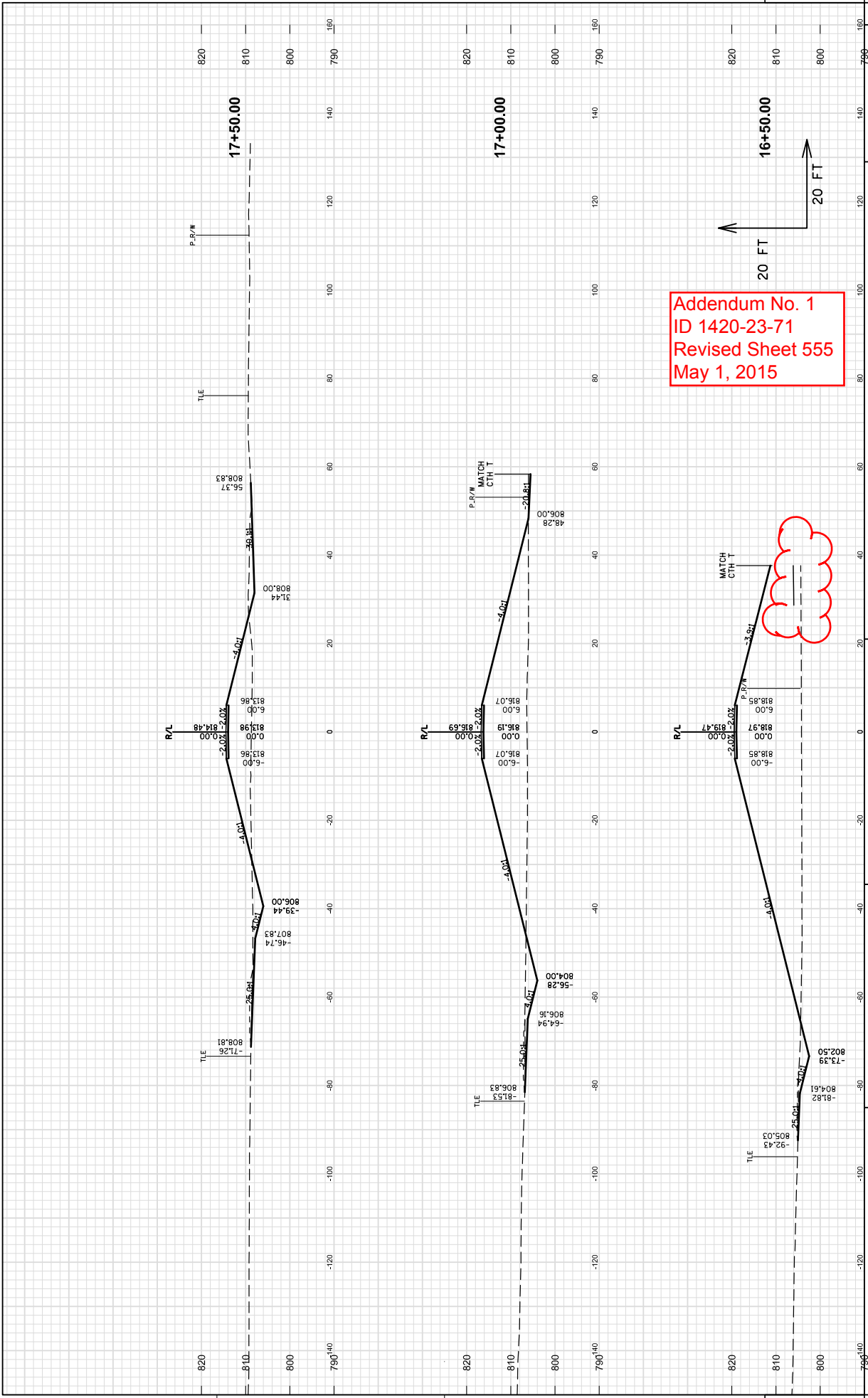
FILE NAME : S:\CORRPROJ\FOND\USH 151 - CTH T - V\CIVIL3D\DESIGN\CORRIDORS\14202300\_CORRIDOR-CTH\_T\_WEST\_CROSSSECTIONS\_ADDENDUM.C3D.PLOT2.DWG : 4/24/2015 1:30 PM

PLOT BY : JEFF CHVOSTA

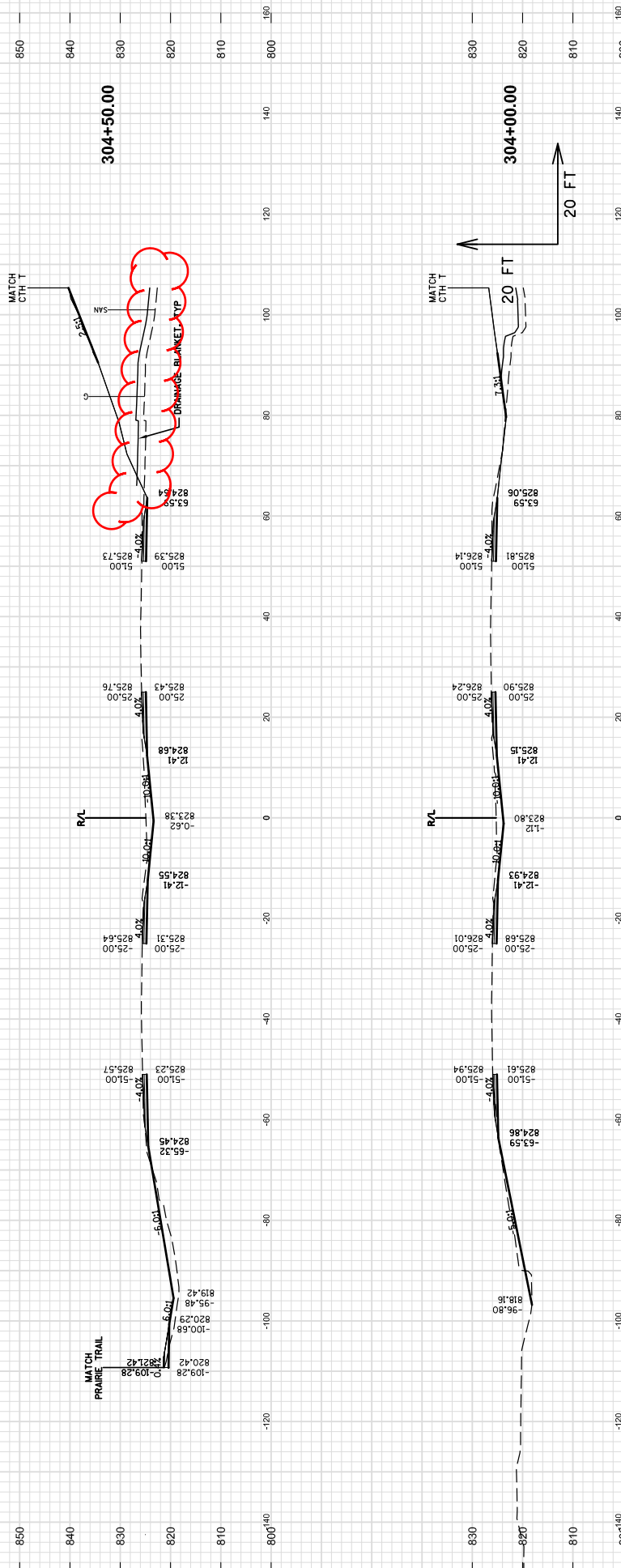
PLOT SCALE : \*\*\*\*\*

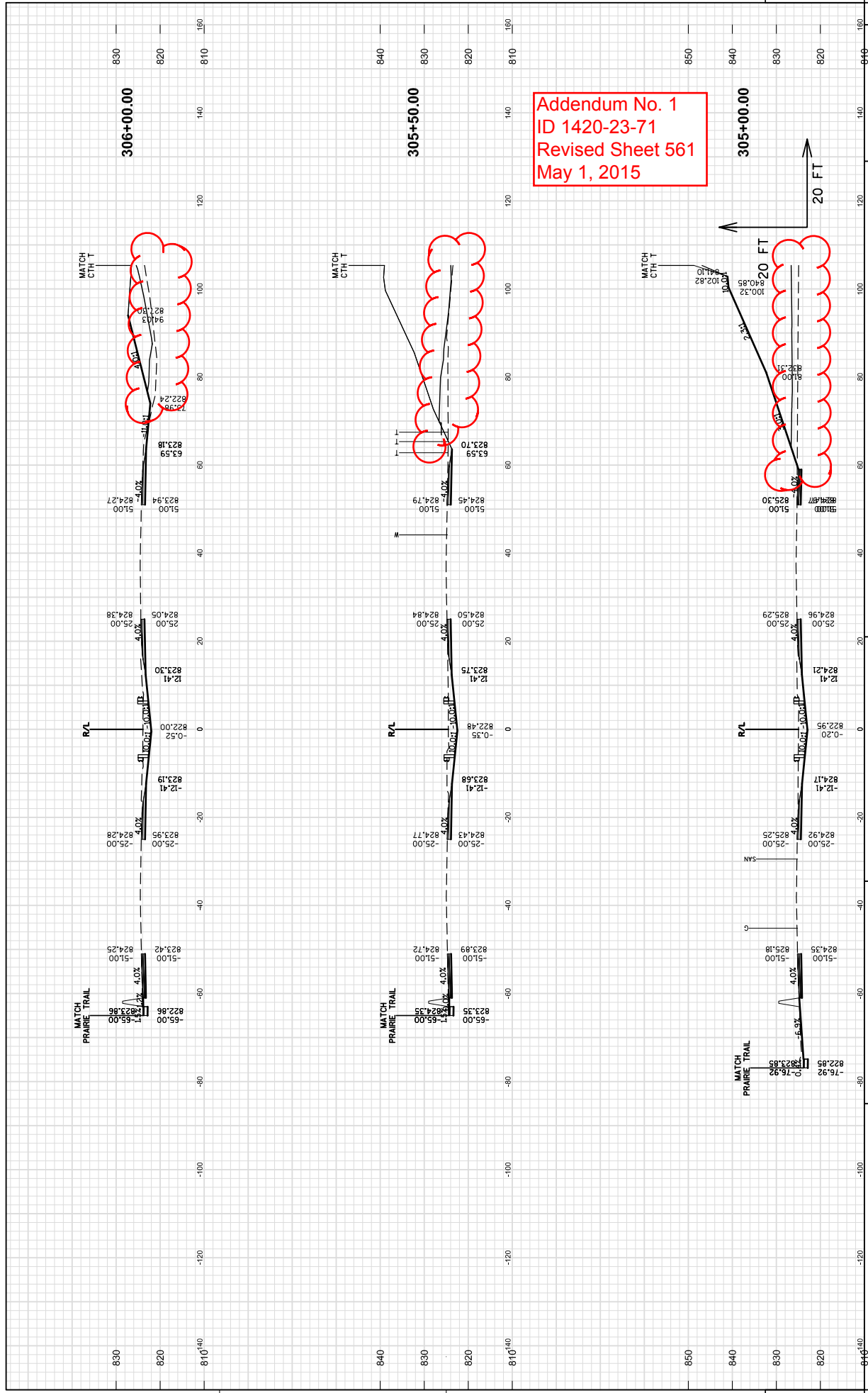
WISDOT/CADD SHEET 49



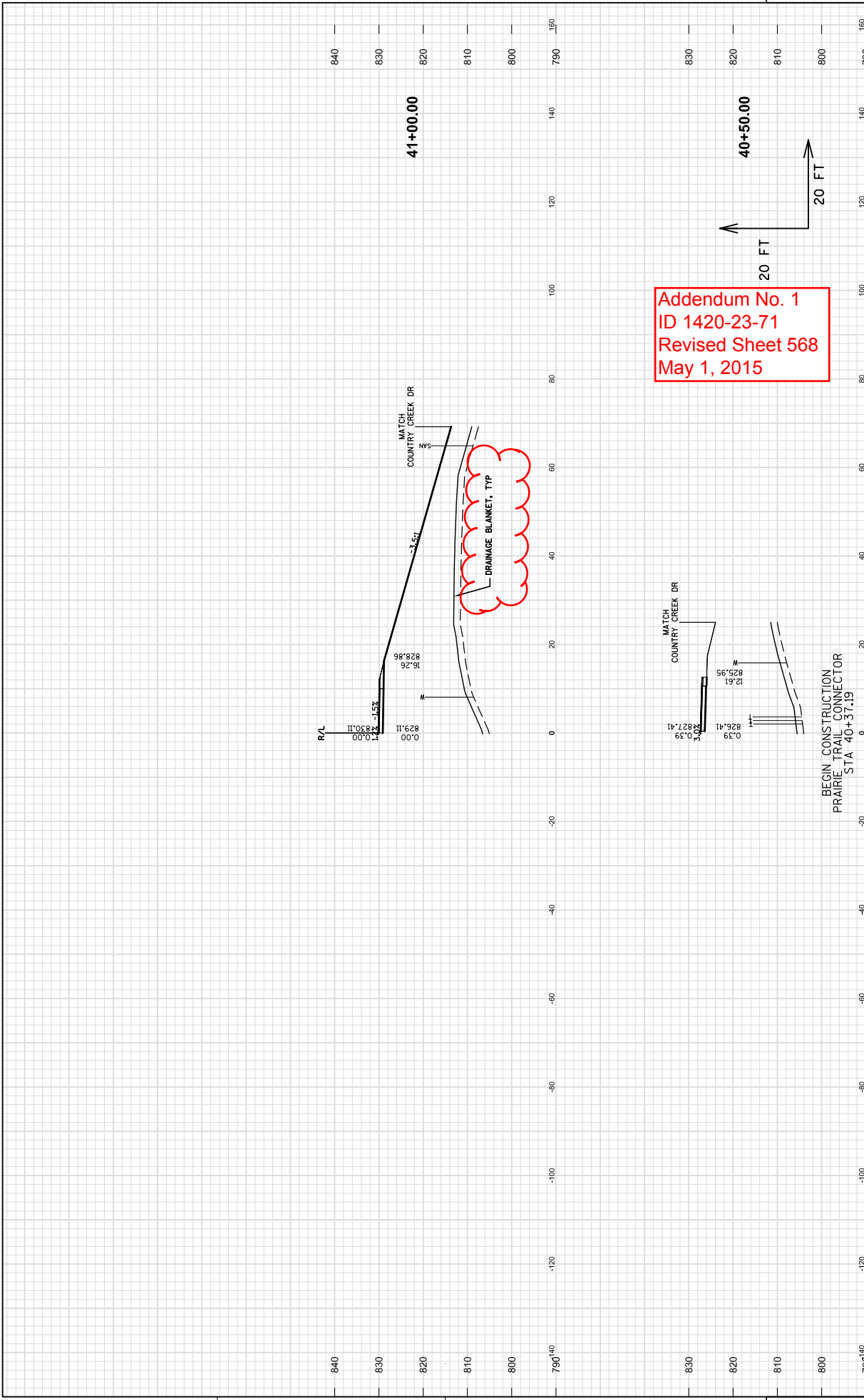


Addendum No. 1  
 ID 1420-23-71  
 Revised Sheet 560  
 May 1, 2015



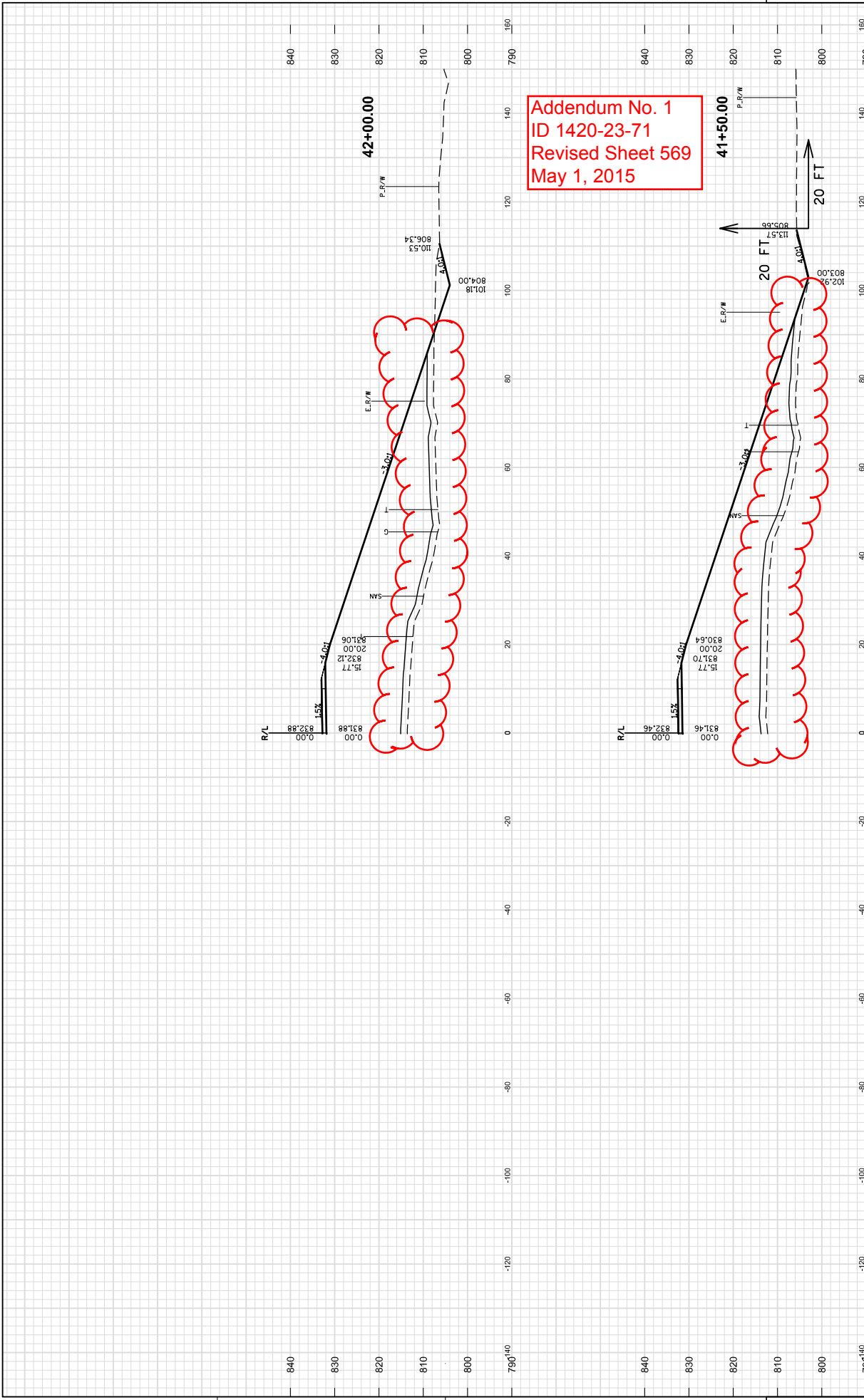


Addendum No. 1  
 ID 1420-23-71  
 Revised Sheet 561  
 May 1, 2015

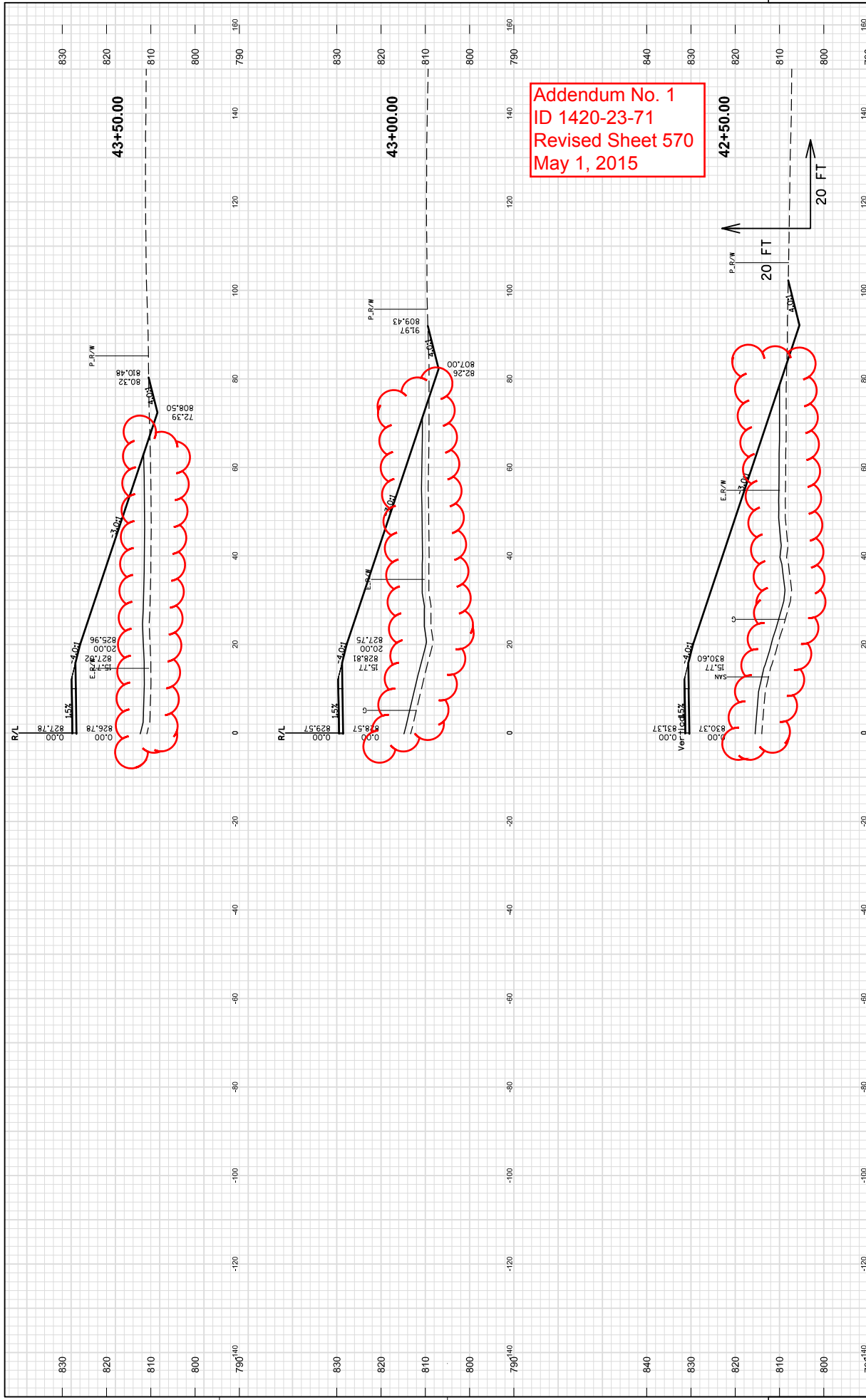


Addendum No. 1  
 ID 1420-23-71  
 Revised Sheet 568  
 May 1, 2015





Addendum No. 1  
 ID 1420-23-71  
 Revised Sheet 569  
 May 1, 2015

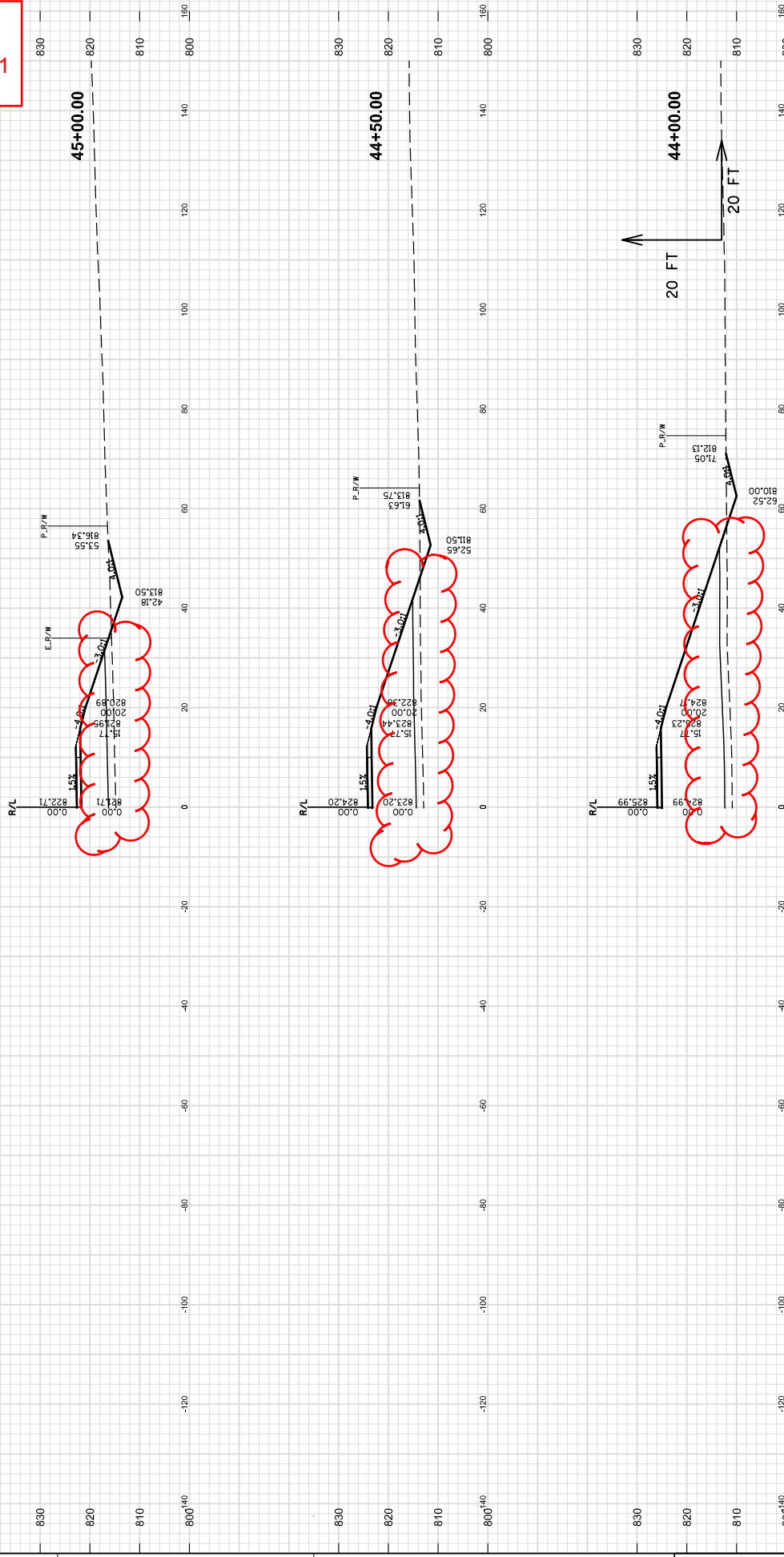


Addendum No. 1  
 ID 1420-23-71  
 Revised Sheet 570  
 May 1, 2015

9

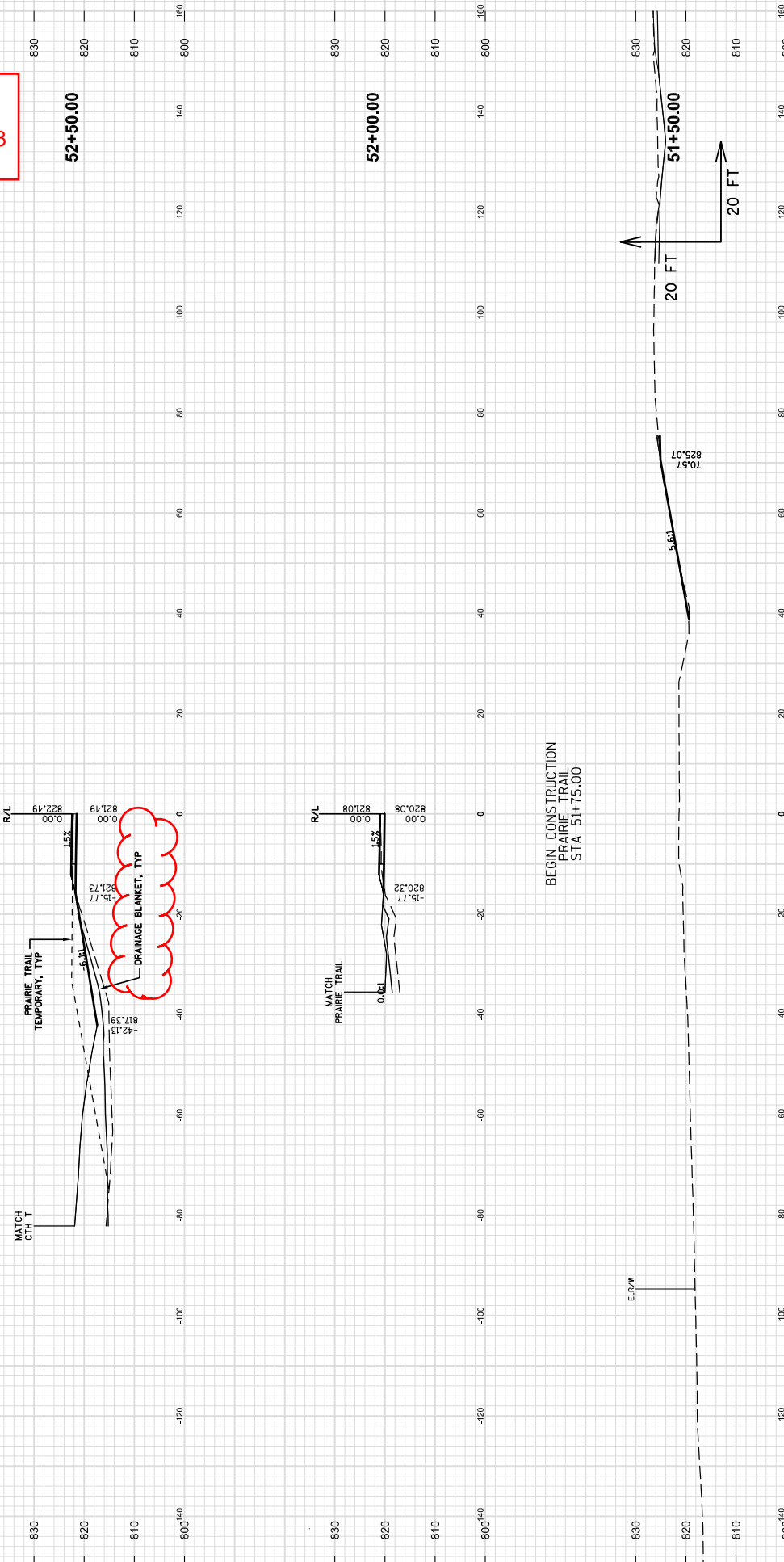
9

Addendum No. 1  
 ID 1420-23-71  
 Revised Sheet 571  
 May 1, 2015



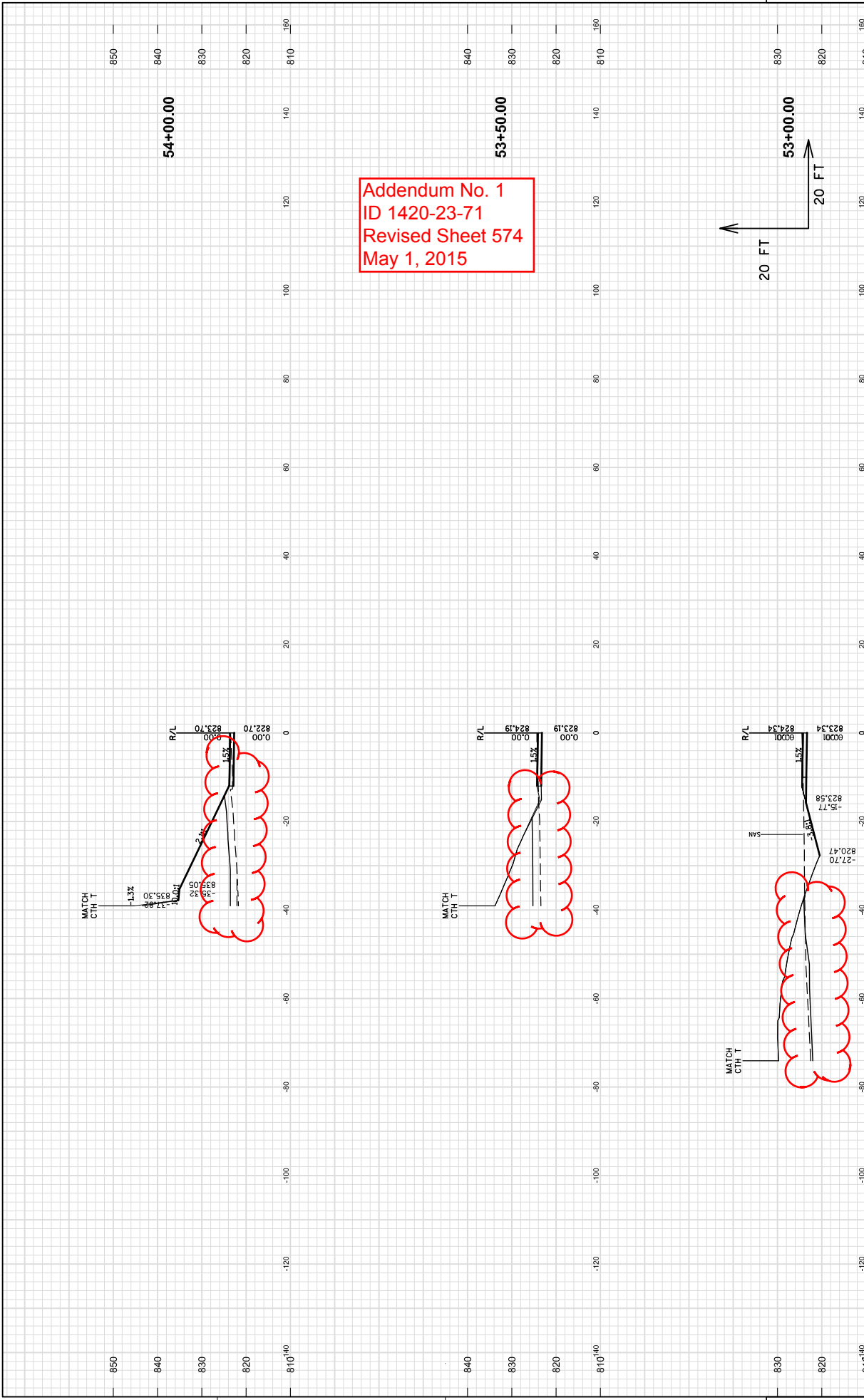


Addendum No. 1  
 ID 1420-23-71  
 Revised Sheet 573  
 May 1, 2015

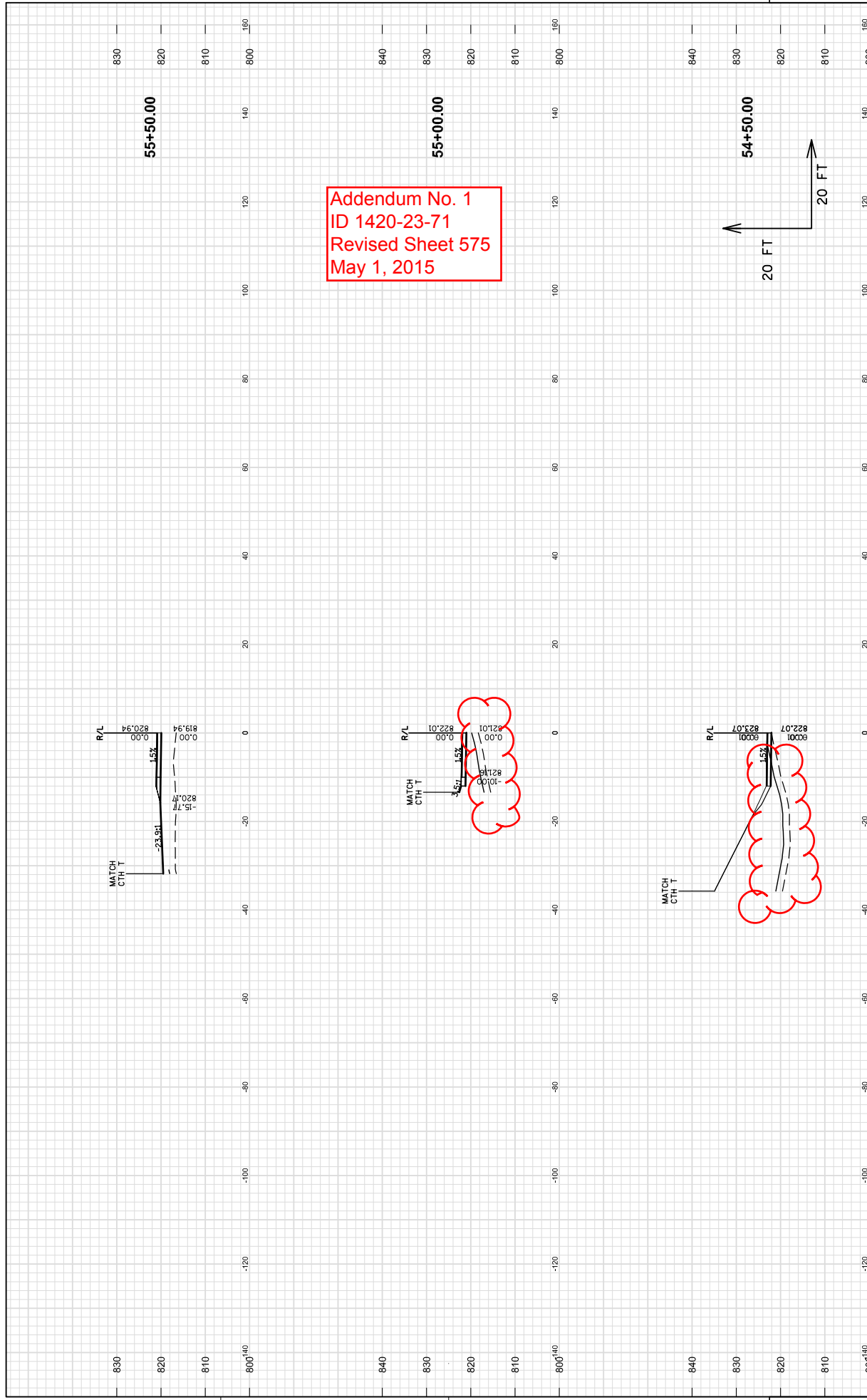


9

9



Addendum No. 1  
 ID 1420-23-71  
 Revised Sheet 574  
 May 1, 2015



Addendum No. 1  
 ID 1420-23-71  
 Revised Sheet 575  
 May 1, 2015

9

9

## SCHEDULE OF ITEMS

REVISED:

CONTRACT:  
20150512053PROJECT(S):  
1420-23-71FEDERAL ID(S):  
WISC 2015306

CONTRACTOR : \_\_\_\_\_

LINE NO	ITEM DESCRIPTION	APPROX. QUANTITY AND UNITS	UNIT PRICE		BID AMOUNT	
			DOLLARS	CTS	DOLLARS	CTS
0110	204.0190 Removing Surface Drains	2.000 EACH	.	.	.	.
0120	204.0205 Removing Utility Poles	1.000 EACH	.	.	.	.
0130	204.0210 Removing Manholes	3.000 EACH	.	.	.	.
0140	204.0220 Removing Inlets	9.000 EACH	.	.	.	.
0150	204.0245 Removing Storm Sewer (size) 01. 12-Inch	130.000 LF	.	.	.	.
0160	204.0245 Removing Storm Sewer (size) 02. 15-Inch	120.000 LF	.	.	.	.
0170	204.0245 Removing Storm Sewer (size) 03. 18-Inch	560.000 LF	.	.	.	.
0180	204.0245 Removing Storm Sewer (size) 04. 24-Inch	25.000 LF	.	.	.	.
0190	204.0245 Removing Storm Sewer (size) 05. 36-Inch	30.000 LF	.	.	.	.
0200	205.0100 Excavation Common	26,379.000 CY	.	.	.	.
0210	206.1000 Excavation for Structures Bridges (structure) 01. B-20-227	LUMP	LUMP	.	.	.



## SCHEDULE OF ITEMS

REVISED:

CONTRACT:  
20150512053PROJECT(S):  
1420-23-71FEDERAL ID(S):  
WISC 2015306

CONTRACTOR : \_\_\_\_\_

LINE NO	ITEM DESCRIPTION	APPROX. QUANTITY AND UNITS	UNIT PRICE		BID AMOUNT	
			DOLLARS	CTS	DOLLARS	CTS
0220	208.0100 Borrow	524,468.000 CY	.	.	.	.
0230	210.0100 Backfill Structure	359.000 CY	.	.	.	.
0240	213.0100 Finishing Roadway (project) 01. 1420-23-71	1.000 EACH	.	.	.	.
0250	214.0100 Obliterating Old Road	5.000 STA	.	.	.	.
0260	305.0110 Base Aggregate Dense 3/4-Inch	1,530.000 TON	.	.	.	.
0270	305.0120 Base Aggregate Dense 1 1/4-Inch	39,738.000 TON	.	.	.	.
0280	310.0115 Base Aggregate Open Graded	40.000 CY	.	.	.	.
0290	311.0110 Breaker Run	2,850.000 TON	.	.	.	.
0300	415.0410 Concrete Pavement Approach Slab	190.000 SY	.	.	.	.
0310	416.0160 Concrete Driveway 6-Inch	185.000 SY	.	.	.	.
0320	416.0610 Drilled Tie Bars	9.000 EACH	.	.	.	.

## SCHEDULE OF ITEMS

REVISED:

CONTRACT:  
20150512053PROJECT(S):  
1420-23-71FEDERAL ID(S):  
WISC 2015306

CONTRACTOR : \_\_\_\_\_

LINE NO	ITEM DESCRIPTION	APPROX. QUANTITY AND UNITS	UNIT PRICE		BID AMOUNT	
			DOLLARS	CTS	DOLLARS	CTS
0760	522.0330 Culvert Pipe Reinforced Concrete Class IV 30-Inch	144.000 LF	.		.	
0770	522.0524 Culvert Pipe Reinforced Concrete Class V 24-Inch	794.000 LF	.		.	
0780	522.1012 Apron Endwalls for Culvert Pipe Reinforced Concrete 12-Inch	2.000 EACH	.		.	
0790	522.1015 Apron Endwalls for Culvert Pipe Reinforced Concrete 15-Inch	21.000 EACH	.		.	
0800	522.1018 Apron Endwalls for Culvert Pipe Reinforced Concrete 18-Inch	1.000 EACH	.		.	
0810	522.1024 Apron Endwalls for Culvert Pipe Reinforced Concrete 24-Inch	19.000 EACH	.		.	
0820	522.1030 Apron Endwalls for Culvert Pipe Reinforced Concrete 30-Inch	3.000 EACH	.		.	
0830	522.1036 Apron Endwalls for Culvert Pipe Reinforced Concrete 36-Inch	1.000 EACH	.		.	
0840	523.0119 Culvert Pipe Reinforced Concrete Horizontal Elliptical Class HE-III 19x30-Inch	80.000 LF	.		.	

## SCHEDULE OF ITEMS

REVISED:

CONTRACT:  
20150512053PROJECT(S):  
1420-23-71FEDERAL ID(S):  
WISC 2015306

CONTRACTOR : \_\_\_\_\_

LINE NO	ITEM DESCRIPTION	APPROX. QUANTITY AND UNITS	UNIT PRICE		BID AMOUNT	
			DOLLARS	CTS	DOLLARS	CTS
0950	603.8000 Concrete Barrier Temporary Precast Delivered	1,800.000 LF	.	.	.	.
0960	603.8125 Concrete Barrier Temporary Precast Installed	1,800.000 LF	.	.	.	.
0970	604.0400 Slope Paving Concrete	582.000 SY	.	.	.	.
0980	606.0100 Riprap Light	8.000 CY	.	.	.	.
0990	606.0200 Riprap Medium	385.000 CY	.	.	.	.
1000	608.0312 Storm Sewer Pipe Reinforced Concrete Class III 12-Inch	126.000 LF	.	.	.	.
1010	608.0315 Storm Sewer Pipe Reinforced Concrete Class III 15-Inch	883.000 LF	.	.	.	.
1020	608.0318 Storm Sewer Pipe Reinforced Concrete Class III 18-Inch	271.000 LF	.	.	.	.
1030	608.0324 Storm Sewer Pipe Reinforced Concrete Class III 24-Inch	139.000 LF	.	.	.	.
1040	608.0330 Storm Sewer Pipe Reinforced Concrete Class III 30-Inch	50.000 LF	.	.	.	.
1050	608.0336 Storm Sewer Pipe Reinforced Concrete Class III 36-Inch	30.000 LF	.	.	.	.

## SCHEDULE OF ITEMS

REVISED:

CONTRACT:  
20150512053PROJECT(S):  
1420-23-71FEDERAL ID(S):  
WISC 2015306

CONTRACTOR : \_\_\_\_\_

LINE NO	ITEM DESCRIPTION	APPROX. QUANTITY AND UNITS	UNIT PRICE		BID AMOUNT	
			DOLLARS	CTS	DOLLARS	CTS
1060	608.0412 Storm Sewer Pipe Reinforced Concrete Class IV 12-Inch	96.000 LF	.		.	
1070	611.0420 Reconstructing Manholes	2.000 EACH	.		.	
1080	611.0530 Manhole Covers Type J	3.000 EACH	.		.	
1090	611.0612 Inlet Covers Type C	4.000 EACH	.		.	
1100	611.0624 Inlet Covers Type H	32.000 EACH	.		.	
1110	611.0639 Inlet Covers Type H-S	3.000 EACH	.		.	
1120	611.0642 Inlet Covers Type MS	2.000 EACH	.		.	
1130	611.2004 Manholes 4-FT Diameter	2.000 EACH	.		.	
1140	611.2005 Manholes 5-FT Diameter	1.000 EACH	.		.	
1150	611.2006 Manholes 6-FT Diameter	2.000 EACH	.		.	
1160	611.3230 Inlets 2x3-FT	35.000 EACH	.		.	

## SCHEDULE OF ITEMS

REVISED:

CONTRACT:  
20150512053PROJECT(S):  
1420-23-71FEDERAL ID(S):  
WISC 2015306

CONTRACTOR : \_\_\_\_\_

LINE NO	ITEM DESCRIPTION	APPROX. QUANTITY AND UNITS	UNIT PRICE		BID AMOUNT	
			DOLLARS	CTS	DOLLARS	CTS
1690	632.0101 Trees (species) (size) (root) 09. Crabapple, 'Snowdrift', B&B, 2" Cal.	EACH 5.000	.		.	
1700	632.0101 Trees (species) (size) (root) 10. Hawthorn, Thornless Cockspur (Shrub Form Tree), B&B, 8' Ht.	EACH 3.000	.		.	
1710	632.0101 Trees (species) (size) (root) 11. Hawthorn, 'Winter King', B&B, 2" Cal	EACH 6.000	.		.	
1720	632.0101 Trees (species) (size) (root) 12. Serviceberry, 'Autumn Brilliance', B&B, 2.5" Cal.	EACH 2.000	.		.	
1730	632.9101 Landscape Planting Surveillance and Care Cycles	EACH 26.000	.		.	
1740	633.5200 Markers Culvert End	EACH 60.000	.		.	
1750	634.0612 Posts Wood 4x6-Inch X 12-FT	EACH 2.000	.		.	
1760	634.0614 Posts Wood 4x6-Inch X 14-FT	EACH 23.000	.		.	
1770	634.0616 Posts Wood 4x6-Inch X 16-FT	EACH 5.000	.		.	

## SCHEDULE OF ITEMS

REVISED:

CONTRACT:  
20150512053PROJECT(S):  
1420-23-71FEDERAL ID(S):  
WISC 2015306

CONTRACTOR : \_\_\_\_\_

LINE NO	ITEM DESCRIPTION	APPROX. QUANTITY AND UNITS	UNIT PRICE		BID AMOUNT	
			DOLLARS	CTS	DOLLARS	CTS
2100	649.0400 Temporary Pavement Marking Removable Tape 4-Inch	16,900.000 LF	.		.	
2110	649.0600 Temporary Pavement Marking Removable Tape 6-Inch	275.000 LF	.		.	
2120	650.4000 Construction Staking Storm Sewer	69.000 EACH	.		.	
2130	650.4500 Construction Staking Subgrade	18,722.000 LF	.		.	
2140	650.5000 Construction Staking Base	12,435.000 LF	.		.	
2150	650.5500 Construction Staking Curb Gutter and Curb & Gutter	8,213.000 LF	.		.	
2160	650.6000 Construction Staking Pipe Culverts	19.000 EACH	.		.	
2170	650.6500 Construction Staking Structure Layout (structure) 01. B-20-227	LUMP	LUMP		.	
2180	650.6500 Construction Staking Structure Layout (structure) 02. R-20-46	LUMP	LUMP		.	
2190	650.7000 Construction Staking Concrete Pavement	47.000 LF	.		.	