



Wisconsin Department of Transportation

June 25, 2015

Division of Transportation Systems Development

Bureau of Project Development
4802 Sheboygan Avenue, Rm 601
P O Box 7916
Madison, WI 53707-7916

Telephone: (608) 266-1631
Facsimile (FAX): (608) 266-8459

NOTICE TO ALL CONTRACTORS:

Proposal #22: 9995-03-60
City of Marinette, Lift Structure
Ogden Street Bridge, B-38-16
Menominee River 84.10
Local Street
Marinette County

Letting of July 14, 2015

This is Addendum No. 01, which provides for the following:

Special Provisions

Revised Special Provisions	
Article No.	Description
17	Electrical Work, Item SPV.0105.05

Plan Sheets

Revised Plan Sheets	
Plan Sheet	Plan Sheet Title (brief description of changes to sheet)
17	Electrical Demolition Plan E-1 – Removed Key Note for Limit Switch removal.
18	Electrical Plan and Elevation – Removed Key Note for Limit Switch Installation.
19	Electrical Details – Removed New Fully Closed Limit Switch detail

The responsibility for notifying potential subcontractors and suppliers of these changes remains with the prime contractor.

Sincerely,

Mike Coleman

Proposal Development Specialist
Proposal Management Section

ADDENDUM NO. 1

9995-03-60

July 25, 2015

Special Provisions

17. Electrical Work, Item SPV.0105.05

*Replace the first paragraph under **A Description** with the following:*

This special provision describes furnishing all equipment, materials, labor, tools, shop drawings and performing all work, including installation, adjusting and testing, necessary for the installation of new Traffic Warning Gates and new dolphin Navigation Lights as shown on the plans and specified herein. Scope of work also requires removal and proper disposal or salvage of the corresponding existing equipment. See plans and detailed descriptions of new equipment within this special provision for additional information.

*Remove paragraph 4 under **A Description**.*

*Remove entire section **B.7 Fully Closed Limit Switches**.*

Plan Sheets

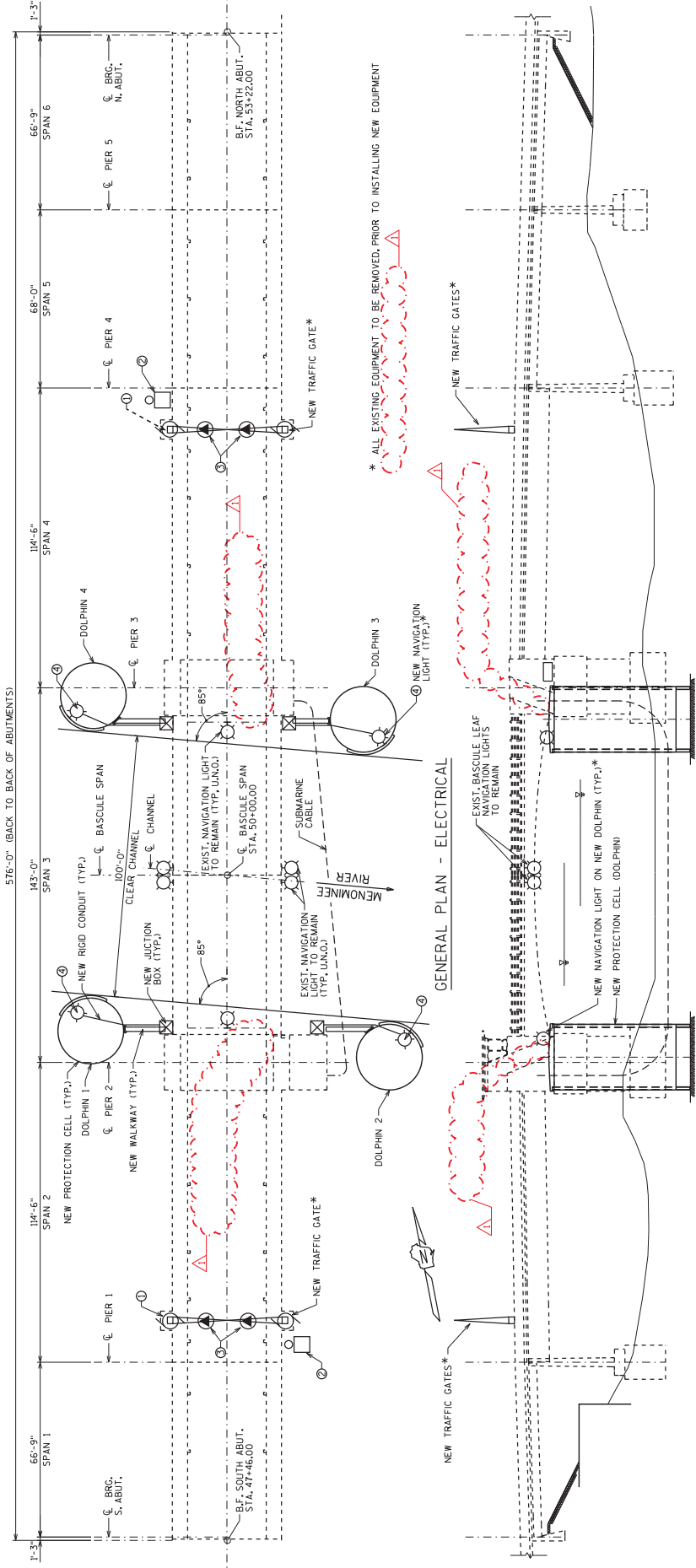
The following 8½ x 11-inch sheets are attached and made part of the plans for this proposal:

Revised: 17 – 19.

END OF ADDENDUM

Addendum No. 01
 ID 9995-03-60
 Revised Sheet 18
 June 25, 2015

STATE PROJECT NUMBER
 9995-03-60



William C. Decker 06/24/15

GENERAL ELEVATION - ELECTRICAL

NOTE:
 ALL ELECTRICAL WORK SHALL BE INCLUDED IN BID ITEM "ELECTRICAL WORK".

KEY NOTES:

- NEW MOTORIZED GATE OPERATOR TO BE FURNISHED AND INSTALLED. OPERATOR WILL BE LOCATED AT SAME LOCATION AS EXISTING GATE OPERATOR BEING REMOVED. CONNECT NEW GATE OPERATOR TO EXISTING POWER AND CONTROL CIRCUIT AND WIRING. SEE SHEET E1 FOR ADDITIONAL INFORMATION.
- NEW WARNING GONG TO BE FURNISHED AND INSTALLED. GONG WILL BE MOUNTED ON TOP OF NEW GATE OPERATOR HOUSING. CONNECT NEW GONG TO EXISTING GONG POWER CIRCUIT AND WIRING. SEE SHEET E1 NOTE 2 FOR ADDITIONAL INFORMATION.
- NEW WARNING LIGHT CONNECTION FOR LIGHTS MOUNTED ON GATE ARM LIGHTS SHALL BE FURNISHED AND INSTALLED ON GATE WITH SINGLE POINT POWER CONNECTION PROVIDED BY CONTRACTOR. CONNECT NEW LIGHTS TO EXISTING WARNING LIGHT CIRCUIT AND WIRING. SEE SHEET E1 NOTE 3 FOR ADDITIONAL INFORMATION.
- NEW DOLPHIN MOUNTED NAVIGATION LIGHTS TO BE FURNISHED, INSTALLED AND WIRED. REUSE EXISTING CIRCUIT AND WIRING TO CONNECT NEW NAVIGATION LIGHTS. SEE SHEET E1 NOTE 4 FOR ADDITIONAL INFORMATION. SEE DETAIL ON SHEET E3.

NO.	DATE	ADDENDUM NO. 1	REVISION	BY	SH
1	06/24/2015				

STATE OF WISCONSIN
 DEPARTMENT OF TRANSPORTATION

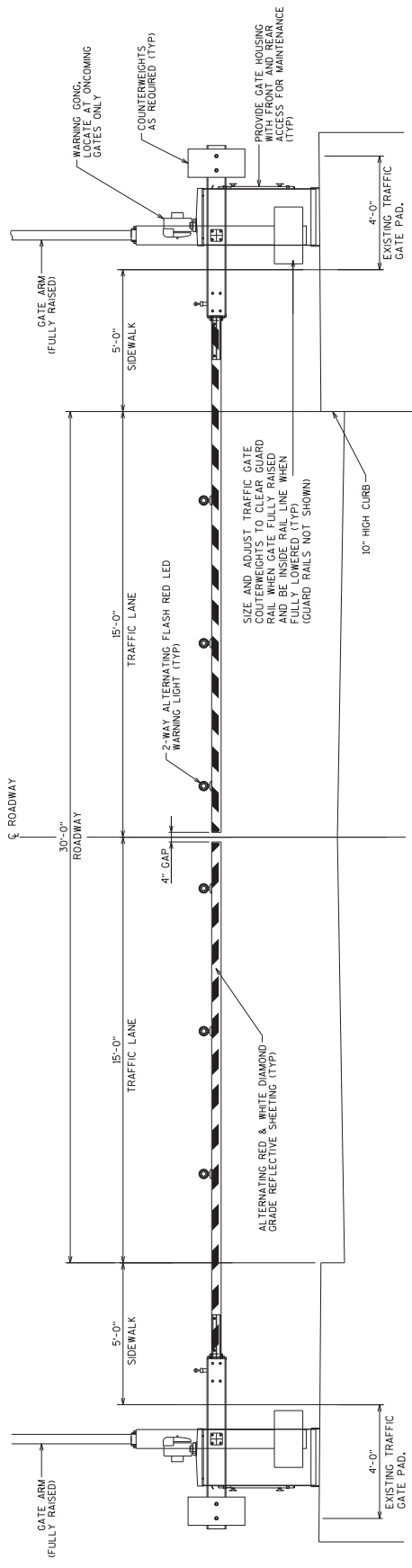
STRUCTURE B-38-0016

ELECTRICAL PLAN & ELEVATION

DATE: 06/24/15

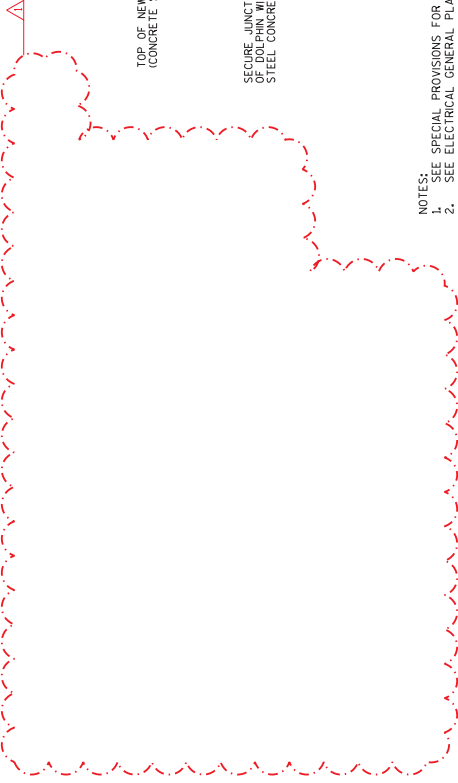
Prakash
 DATE: 06/24/2015

STATE PROJECT NUMBER
9995-03-60



NEW TRAFFIC GATE DETAILS - ELEVATION

DO NOT SCALE
STANDARD STRAIGHT SIDE ARM CHANNELS
MATCH EXISTING ARM HEIGHT 85" DIMENSION ABOVE ROADWAY
MATCH EXISTING ARM HEIGHT 85" DIMENSION ABOVE ROADWAY
MATCH EXISTING ARM HEIGHT 85" DIMENSION ABOVE ROADWAY
FOUR (4) GATES REQUIRED (2 APPROACHES)

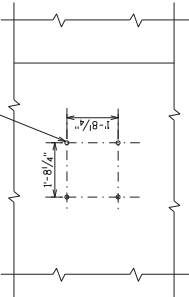


NEW PIER NAVIGATION LIGHTS

DO NOT SCALE
SEE GENERAL NOTES FOR EQUIPMENT, LOCATIONS AND QUANTITIES OF TRAFFIC GATES AND NAVIGATION LIGHTING, AND ADDITIONAL WIRING AND CONDUIT INFORMATION.
COORDINATE WITH STRUCTURAL REPAIRS AND VERIFY ALL CLEARANCES.
COORDINATE GATE ARM LENGTHS WITH ROADWAY AND SIDEWALK WIDTHS.

- NOTES:
1. SEE SPECIAL PROVISIONS FOR ADDITIONAL REQUIREMENTS FOR EQUIPMENT.
 2. SEE ELECTRICAL GENERAL PLAN FOR LOCATIONS AND QUANTITIES OF TRAFFIC GATES AND NAVIGATION LIGHTING, AND ADDITIONAL WIRING AND CONDUIT INFORMATION.
 3. COORDINATE WITH STRUCTURAL REPAIRS AND VERIFY ALL CLEARANCES.
 4. COORDINATE GATE ARM LENGTHS WITH ROADWAY AND SIDEWALK WIDTHS.

REUSE EXISTING 3/4" DIA ANCHOR BOLTS.
NEW GATES TO MATCH EXISTING ANCHOR BOLT DIAMETER AND SPACING.
PROVIDE NEW NUTS & WASHERS



TRAFFIC GATES ANCHOR BOLT PLAN

DO NOT SCALE
INSTALL ALL NEW GATES AT SAME LOCATIONS AS EXISTING GATES.
RECRUIT AS REQUIRED.



George N. Pavlakis
DATE: 06/27/2015

Addendum No. 01
ID 9995-03-60
Revised Sheet 19
June 25, 2015

William C. Decker
06/24/15

NO.	DATE	ADDENDUM NO. 1	REVISION	BY
1	06/24/2015			SH

STATE OF WISCONSIN
DEPARTMENT OF TRANSPORTATION

STRUCTURE B-38-0016

DESIGN: CNP
PLANS: CVD
VP

ELECTRICAL
DETAILS

SHEET E-3

DATE: 06/24/15