

# Wisconsin Department of Transportation

November 3, 2015

## Division of Transportation Systems Development

Bureau of Project Development  
 4802 Sheboygan Avenue, Rm 601  
 P O Box 7916  
 Madison, WI 53707-7916

Telephone: (608) 266-1631  
 Facsimile (FAX): (608) 266-8459

### NOTICE TO ALL CONTRACTORS:

**Proposal #03: 3364-03-72, WISC 2015 569**  
**Milwaukee Street, Village of Lomira**  
**Church Street to Maple Street**  
**STH 175**  
**Dodge County**

**3364-03-73**  
**Milwaukee Street, Village of Lomira**  
**Church Street to Maple Street**  
**STH 175**  
**Dodge County**

### Letting of November 10, 2015

This is Addendum No. 02, which provides for the following:

#### Special Provisions

Added Special Provisions	
Article No.	Description
38	Adjusting Sanitary And Storm Manhole Covers
39	Cover Plates Temporary

#### Schedule of Items

Revised Bid Item Quantities					
Bid Item	Item Description	Unit	Old Quantity	Revised Quantity	Proposal Total
460.1101	HMA Pavement Type E-1	TON	4604	4	4608
611.0530	Manhole Covers Type J	EA	6	-1	5
611.2004	Manholes 4-FT	EA	3	1	4
611.2006	Manholes 6-FT	EA	4	-1	3
SPV.0090.08	Sanitary Lateral, 6-Inch PVC	LF	1481	10	1491

Added Bid Item Quantities					
Bid Item	Item Description	Unit	Old Quantity	Revised Quantity	Proposal Total
611.0545	Manhole Covers Type L	EA	0	1	1
611.8120.S	Cover Plates Temporary	EA	0	24	24

**Plan Sheets**

<b>Revised Plan Sheets - 3364-03-72</b>	
Plan Sheet	Plan Sheet Title (brief description of changes to sheet)
31	Storm Sewer – Changed MH 10.0 from 6-J to 4-L
54	MQ – Undistributed Qty of asphalt added for manhole adjustments
57	MQ – Changed MH 10.0 from 6-J to 4-L
58	MQ – Added Item 611.8120.S; Cover Plates Temporary

<b>Revised Plan Sheets – 3364-03-73</b>	
Plan Sheet	Plan Sheet Title (brief description of changes to sheet)
6	Sanitary sewer size label updated from 8” to 10”
7	Sanitary MH outside drop note added
9	New Sanitary MH #123 NE invert eliminated and connection to main added
11	Sanitary lateral quantity updated, Added Item 611.8120.S; Cover Plates Temporary

The responsibility for notifying potential subcontractors and suppliers of these changes remains with the prime contractor.

Sincerely,

*Mike Coleman*

Proposal Development Specialist  
Proposal Management Section

**ADDENDUM NO. 02**  
**3364-03-72 & 3364-03-73**  
**November 3, 2015**

**Special Provisions**

**38. Adjusting Sanitary and Storm Manhole Covers**

*Replace standard spec. 611.3.3 (3) and (4) with the following:*

- (3) In areas of HMA pavement, set temporary cover plates over manholes prior to placing lower layers. Prior to placement of the upper layer, locate cover plates, sawcut and remove pavement 6-18 inches larger than the casting, remove the plate, and set the manhole cover to 1/4 +/- 1/8 inch below final grade. Restore lower layers of HMA pavement between the manhole cover and removal limits a minimum of 24 hours prior to placing the upper layer.
  
- (4) Verify manhole cover elevations with a 6-foot straightedge set on blocks the thickness of the upper layer. Set the straightedge over the centerline of each frame parallel to the direction of traffic. Measure the distance from the straightedge to each edge of the frame. Repeat with the straightedge set perpendicular to traffic. If any measurement is more than 3/8 inch or less than 1/8 inch, reset the frame to the correct plane and elevation.

*Replace standard spec. 611.5.4 (1) with the following:*

- (1) Payment for the Manhole Covers and Inlet Covers bid items is full compensation for removing and salvaging the existing covers; and for providing new covers, including frames, grates or lids; for the materials and work required to set the manhole covers to finished grade including saw cuts, pavement removal, and all other required materials and for installing and adjusting each cover. Old covers removed remain the municipality's property. The department will pay separately for temporary cover plates and HMA pavement.

**39. Cover Plates Temporary, Item 611.8120.S.**

**A Description**

This special provision describes furnishing, installing and removing a steel plate to cover and support asphaltic pavement and traffic loading at manholes, inlets and similar structures during milling and paving operations.

**B Materials**

Provide a 0.25-inch minimum thickness steel plate that extends to the outside edge of the existing masonry.

**C (Vacant)**

**D Measurement**

The department will measure Cover Plates Temporary, acceptably completed in place, as units.

**E Payment**

The department will pay for measured quantities at the contract unit price under the following bid item:

ITEM NUMBER	DESCRIPTION	UNIT
611.8120.S	Cover Plates Temporary	Each

Payment is full compensation for furnishing, installing, and removing the cover plates.

The steel plates shall become the property of the contractor when no longer needed in the contract work.  
611-006 (20030820)

**Schedule of Items**

Attached, dated November 3, 2015, are the revised Schedule of Items Pages 3, 5, 12, and 13.

**Plan Sheets**

The following 8½ x 11-inch sheets are attached and made part of the plans for this proposal:  
Revised:

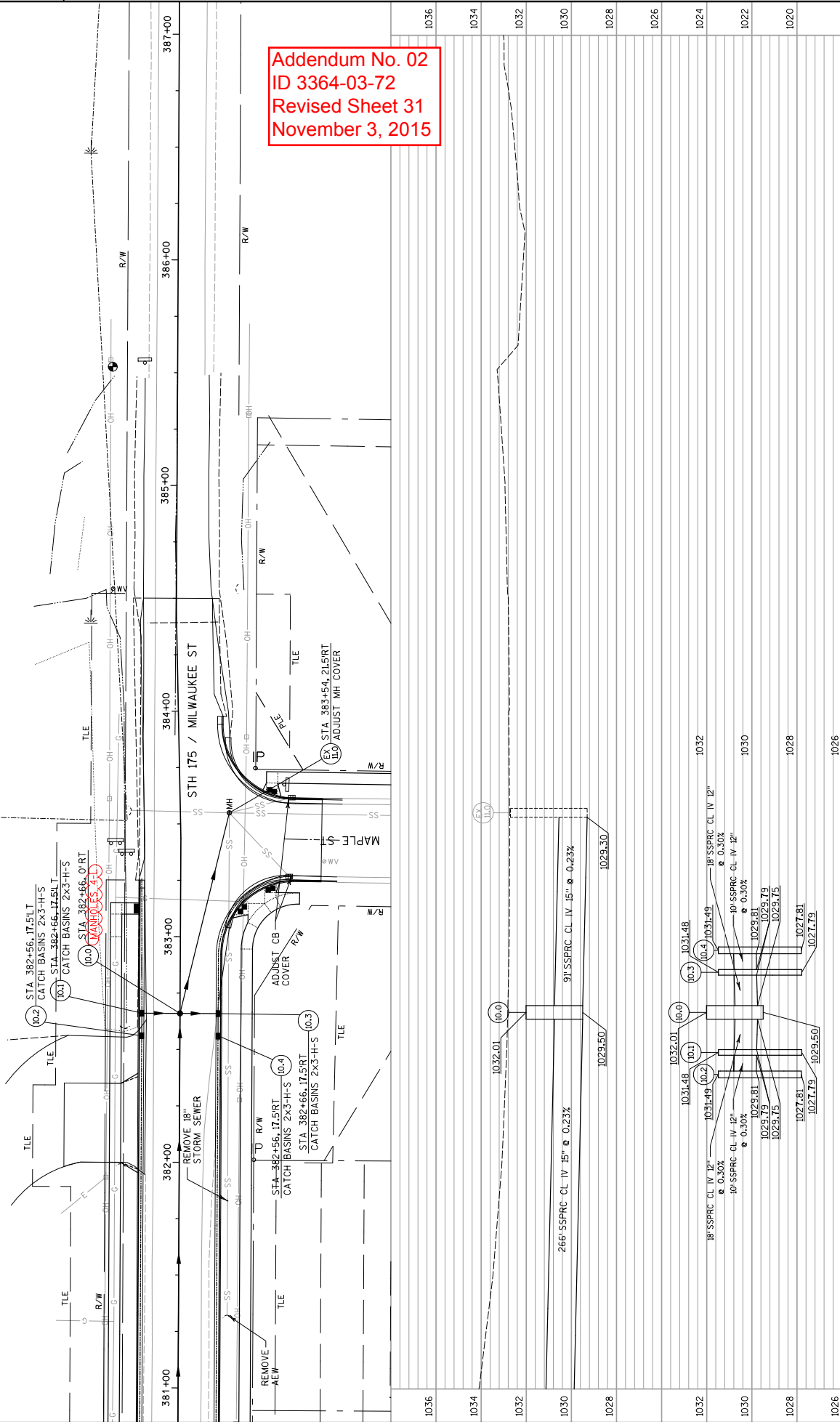
ID 3364-03-72 – 31, 54, 57, 58

ID 3364-03-73 – 6, 7, 9, 11

END OF ADDENDUM



Addendum No. 02  
 ID 3364-03-72  
 Revised Sheet 31  
 November 3, 2015



PROJECT NO: 3364-03-72	HWY: STH 175	COUNTY: DODGE	STORM SEWER	SHEET 31	E
FILE NAME : P:\NM\WI\8007R11-0319-102 STH 175\graph\cs022507_ss.dgn					
PLOT NAME : COUNTY: DODGE					
PLOT DATE : 10/23/2015					
PLOT SCALE : 1:40					
PLOT BY : gasperc					
1036					
1034					
1032					
1030					
1028					
1026					
1024					
1022					
1020					
1026					
1032					
1030					
1028					
1026					

BASE AGGREGATE ITEMS									
CATEGORY	ROADWAY DRIVEWAYS	STATION TO STATION	TO	O/S	BASE AGGREGATE DENSE		SELECT CRUSHED		WATER MGAL
					3/4-INCH	1/2-INCH	TON	TON	
0010	"	369+37	370+00	RT	22	--	--	0.21	
"	"	369+50	370+00	RT	8	--	--	0.08	
"	"	370+63	371+00	RT	9	--	--	0.09	
"	"	371+66	372+00	RT	20	--	--	0.19	
"	"	371+50	372+39	RT	12	--	--	0.12	
"	"	372+39	374+05	RT	11	--	--	0.11	
"	"	374+05	374+50	RT	12	--	--	0.12	
"	"	374+50	375+21	RT	8	--	--	0.08	
"	"	375+21	376+24	RT	10	--	--	0.10	
"	"	376+24	377+11	RT	8	--	--	0.08	
"	"	377+11	379+50	RT	7	--	--	0.07	
"	"	379+50	381+17	RT	10	--	--	0.10	
"	"	381+17	383+75	RT	18	--	--	0.17	
"	"	383+75	384+62	RT	62	--	--	0.59	
"	"	384+62	384+60	RT	12	--	--	0.12	
"	"	384+60	388+62	RT	7	--	--	0.07	
"	"	388+62	UNDISTRIBUTED	RT	6	--	--	0.06	
"	"	EBS	UNDISTRIBUTED		2,466	--	--	23.32	
"	"	DUST CONTROL	UNDISTRIBUTED		5.00	--	--	5.00	
0020	SHOULDERS	383+25	384+60		1,500	10,587	12,524	238.00	
"	"	388+97			--	--	--	--	
0010	STH 175	346+01	368+62	11' LT TO 19' LT	--	1,301	1,236	24.07	
"	"	368+62	388+62	11' RT TO 19' RT	--	1,301	1,236	24.07	
"	"	EBS	UNDISTRIBUTED		--	993	8.85		
"	"	UNDISTRIBUTED			--	2,603	3,405	57.00	
"	"	TOTAL			1,500	13,180	15,929	295.00	

Addendum No. 02  
 ID 3364-03-72  
 Revised Sheet 54  
 November 3, 2015

PROJECT NO: 3364-03-72      HWY: STH 175      COUNTY: DODGE

FILE NAME :      PLOT DATE : 11/2/2015      PLOT BY :      PLOT SCALE :      MISCELLANEOUS QUANTITIES      SHEET 54

ASPHALTIC PAVING										
CATEGORY	ROADWAY DRIVEWAYS	STATION TO STATION	O/S	MATERIAL	TACK COAT	PAVEMENT TYPE	WEATHER	HMA	HMA COLD	ASPHALTIC SURFACE
0010	STH 175	346+01	384+52	LT/RT	186	689	3,376	844	460,400	465,020
"	STH 175	346+01	346+18	RT	--	1	4	1	460,400	465,020
"	STH 175	346+01	346+18	LT	--	1	4	1	460,400	465,020
"	SCHOOL STREET	352+66	353+17	RT	2	7	37	9	460,400	465,020
"	MAIN STREET	362+04	362+62	RT	2	7	35	9	460,400	465,020
"	DRIVEWAYS	346+85	347+53	RT	--	--	--	--	--	--
"	"	348+90	349+02	RT	--	--	--	--	--	--
"	"	350+43	350+62	RT	--	--	--	--	--	--
"	"	355+01	355+12	LT	--	--	--	--	--	--
"	"	360+92	361+04	LT	--	--	--	--	--	--
"	"	367+26	367+41	LT	--	--	--	--	--	--
"	"	374+01	374+11	RT	--	--	--	--	--	--
"	"	375+13	375+33	RT	--	--	--	--	--	--
"	"	379+47	379+67	LT	--	--	--	--	--	--
"	"	381+98	382+35	LT	--	--	--	--	--	--
"	"	UNDISTRIBUTED			--	--	--	--	--	--
"	"	UNDISTRIBUTED			4	--	--	--	--	--
"	"	SUBTOTAL			190	705	3,460	864	460,400	465,020
0020	STH 175	346+01	368+00	11' LT TO 19' LT	32	117	574	144	460,400	465,020
"	STH 175	346+01	368+00	11' RT TO 19' RT	32	117	574	144	460,400	465,020
"	"	SUBTOTAL			64	234	1,148	288	460,400	465,020
"	"	TOTAL			254	939	4,608	1,152	460,400	465,020

CULVERT PIPE ITEMS										
CATEGORY	ROADWAY DRIVEWAYS	STATION TO STATION	O/S	CORRUGATED STEEL	CULVERT PIPE	MINIMUM	STEEL PIPE	CONCRETE	HORIZONTAL	ELLIPTICAL
0010	STH 175	369+73.16	329.5' LT		--	--	--	--	--	1
"	STH 175	379+75	38.3' LT TO 379+41	42.0' LT	34	0.064	2	--	--	--
"	STH 175	381+93	39.7' LT TO 382+42	39.7' LT	49	0.064	2	--	--	--
"	"	TOTAL			83		4			1

NOTE: USE CLASS 'B' BEDDING (SEE SDD 'CLASS B' BEDDING FOR CULVERT PIPE OR STORM SEWER) FOR ALL PIPES; COST INCIDENTAL TO PPE.



**PIPE UNDERDRAIN**

SPV.0090.20 PIPE UNDERDRAIN 6-INCH SPECIAL LF	
CATEGORY	STATION TO STATION O/S
0010	-
ROADWAY	7.627
UNDISTRIBUTED	7.627
<b>TOTAL</b>	<b>7.627</b>

<b>COVER PLATES TEMPORARY</b>	
611.8120.S COVER PLATES TEMPORARY	
CATEGORY	ROADWAY
0010	EA
UNDISTRIBUTED	14
<b>TOTAL</b>	<b>14</b>

**RESTORATION**

CATEGORY	ROADWAY	STATION TO STATION O/S	TOPSOIL	MULCHING	FERTILIZER	SEEDING	WATER	SOD	LAWN
0010	STH 175	-	7,046	--	6	--	198	7,046	631,1000
UNDISTRIBUTED			740	4,450	4	80	19	740	
<b>SUBTOTAL CATEGORY 0010</b>			<b>7,786</b>	<b>4,450</b>	<b>10</b>	<b>80</b>	<b>177</b>	<b>7,786</b>	
0030	SETTLING BASIN	-	114	--	1	--	3	114	
<b>TOTAL</b>			<b>7,900</b>	<b>4,450</b>	<b>11</b>	<b>80</b>	<b>180</b>	<b>7,900</b>	

**EROSION CONTROL**

CATEGORY	ROADWAY	STATION TO STATION O/S	EROSION CONTROL	INLET PROTECTION	TEMPORARY	CHECKS	ROCK	GEOTEXTILE
0010	STH 175	-	1,176	9	25	36	10	71
UNDISTRIBUTED			800	9	25	36	10	71
<b>SUBTOTAL CATEGORY 0010</b>			<b>1,976</b>	<b>9</b>	<b>25</b>	<b>36</b>	<b>10</b>	<b>71</b>
0030	SETTLING BASIN	-	131	--	--	12	1	297
<b>TOTAL</b>			<b>2,107</b>	<b>9</b>	<b>25</b>	<b>48</b>	<b>11</b>	<b>307</b>

Addendum No. 02  
ID 3364-03-72  
Revised Sheet 58  
November 3, 2015



EXCAVATION HAULING & DISPOSAL SUMMARY

FROM STATION	TO STATION	OFFSET	REMARKS
361+85	363+00	C/L - 29' LT	MILWAUKEE ST
TOTAL		169	

COVER PLATES TEMPORARY

CATEGORY	ROADWAY	STH	TOTAL
0010		10	10
TOTAL		10	10

REMOVE HYDRANT SUMMARY

STATION	OFFSET	SPV_0060.02 EACH	REMARKS
346+27	23' LT	1	MILWAUKEE ST
357+06	24' LT	1	MILWAUKEE ST
362+54	36' RT	1	MAIN ST
366+91	24' LT	1	MILWAUKEE ST
372+01	24' LT	1	MILWAUKEE ST
375+41	24' LT	1	MILWAUKEE ST
TOTAL		6	

SANITARY SEWER PIPE

FROM STRUCTURE	TO STRUCTURE	INLET ELEVATION	OUTLET ELEVATION	SPV_0090.09 10-INCH PVC L.F.	SLOPE %
1	2	992.16	995.62	345	1.00%
2	3	995.62	1003.68	355	2.27%
3	4	1003.68	1007.87	300	1.40%
4	5	1007.87	1015.89	300	2.67%
5	6	1015.99	1017.61	334	0.49%
6	7	1017.71	1022.31	301	1.53%
7	8	1022.31	1025.16	301	0.95%
8	9	1025.226	1030.03	380	1.26%
9	10	1030.53	1034.32	352	1.00%
TOTAL				2968	

SANITARY LATERAL SUMMARY

STATION L.F.	STRUCTURE L.F.	ADDRESS	STREET	SPV_0090.08 6 INCH PVC L.F.	STATION	ADDRESS	STREET
348+02	12	528	MILWAUKEE	360+44	11	712	MILWAUKEE
348+29	13	528	MILWAUKEE	360+44	36	719	MILWAUKEE
348+53	37	533	MILWAUKEE	361+07	10	732	MILWAUKEE
348+96	38	539	MILWAUKEE	361+49	35	735	MILWAUKEE
349+00	42	539	MILWAUKEE	362+01	34	819	MILWAUKEE
349+00	12	546	MILWAUKEE	362+95	14	1244	MAIN
349+26	43	551	MILWAUKEE	364+03	16	801	MILWAUKEE
350+10	36	561	MILWAUKEE	364+03	32	824	MILWAUKEE
350+85	12	570	MILWAUKEE	365+07	18	828	MILWAUKEE
350+88	37	577	MILWAUKEE	366+20	29	831	MILWAUKEE
351+44	38	585	MILWAUKEE	366+44	18	832	MILWAUKEE
351+64	11	590	MILWAUKEE	367+49	33	911	MILWAUKEE
351+82	13	590	MILWAUKEE	367+59	18	906	MILWAUKEE
352+24	38	593	MILWAUKEE	368+48	15	925	MILWAUKEE
352+90	38	601	MILWAUKEE	368+48	33	926	MILWAUKEE
353+11	12	602	MILWAUKEE	369+68	16	946	MILWAUKEE
353+90	38	607	MILWAUKEE	370+33	36	955	MILWAUKEE
354+16	38	611	MILWAUKEE	370+62	15	964	MILWAUKEE
354+70	12	616	MILWAUKEE	371+72	38	975	MILWAUKEE
355+46	39	623	MILWAUKEE	372+08	10	984	MILWAUKEE
355+66	11	630	MILWAUKEE	372+08	39	985	MILWAUKEE
355+69	39	633	MILWAUKEE	372+90	12	990	MILWAUKEE
355+77	39	633	MILWAUKEE	373+37	40	989	MILWAUKEE
356+59	11	644	MILWAUKEE	373+50	13	990	MILWAUKEE
357+20	11	652	MILWAUKEE	374+80	39	999	MILWAUKEE
357+74	38	645	MILWAUKEE	374+99	12	996	MILWAUKEE
358+20	7	662	MILWAUKEE	375+48	44	1005	MILWAUKEE
358+53	37	672	MILWAUKEE				
358+85	37	645	MILWAUKEE				
359+13	10	702	MILWAUKEE				
TOTAL				TOTAL	1491		

Addendum No. 02  
 ID 3364-03-73  
 Revised Sheet 6  
 November 3, 2015

ABANDON SANITARY MANHOLE SUMMARY

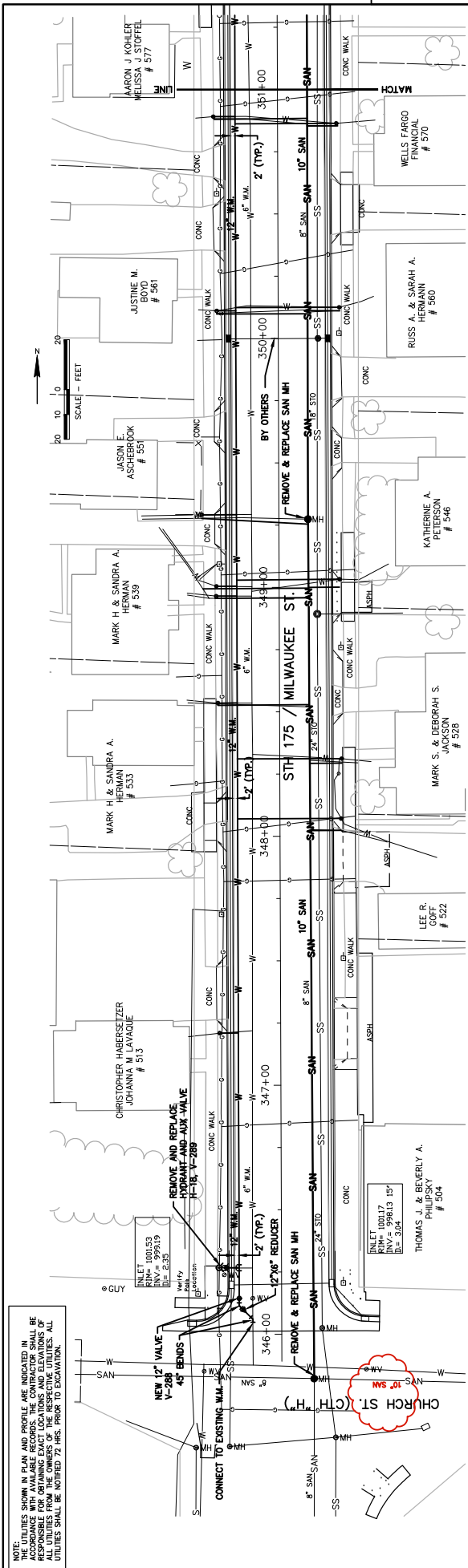
STRUCTURE	STATION	OFFSET	SPV_0060.01 EACH
121E	365+16	11 RT	1
122E	368+16	12 RT	1
TOTAL			2

SANITARY MANHOLE SUMMARY

STRUCTURE	INVERT	STATION	OFFSET	TOP OF RIM	TOP OF STRUCTURE	SPV_0200.01 48-INCH SANITARY SEWER MANHOLE CASTING EACH
1	992.09	345+82	13 RT	1002.12	1000.32	10.03
2	995.62	349+27	12 RT	1005.52	1004.32	9.90
3	1003.68	352+82	12 RT	1012.79	1011.59	9.11
4	1007.87	355+82	12 RT	1017.36	1016.16	9.49
5	1015.89	359+82	12 RT	1023.17	1021.97	11.28
6	1017.61	362+16	11 RT	1026.98	1025.78	11.37
7	1022.31	365+16	6 RT	1033.05	1031.85	10.74
8	1025.16	368+16	6 RT	1034.39	1033.19	9.23
9	1030.03	371+98	12 RT	1038.36	1037.16	9.33
10	1034.32	375+50	14 RT	1046.90	1045.70	12.96
TOTAL						103.06

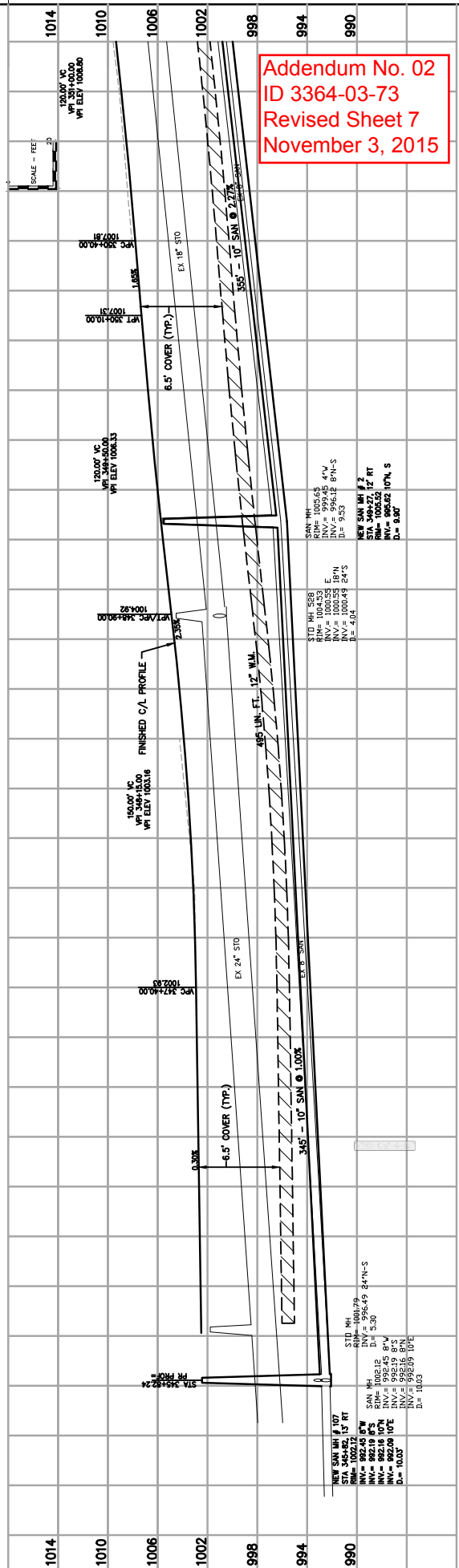
GENERAL NOTES:  
 \* STATION AND OFFSET REFER TO THE CENTER OF STRUCTURE  
 \* ELEVATIONS REFER TO THE CENTER OF STRUCTURE  
 \* INVERTS OF EXISTING PIPES AND STRUCTURES SHALL BE VERIFIED BY THE CONTRACTOR AND APPROVED BY THE ENGINEER PRIOR TO ORDERING STRUCTURE  
 \* DEPTH REFERS TO FINISHED RIM GRADE MINUS THE INVERT ELEVATION

NOTE:  
 THE UTILITIES SHOWN IN PLAN AND PROFILE ARE INDICATED IN THE ATTACHED UTILITY RECORD DRAWINGS. THE CONTRACTOR SHALL BE RESPONSIBLE FOR OBTAINING EXACT LOCATIONS AND ELEVATIONS OF ALL UTILITIES FROM THE OWNERS OF THE RESPECTIVE UTILITIES. ALL UTILITIES SHALL BE NOTIFIED 72 HRS. PRIOR TO EXCAVATION.



5

5



Addendum No. 02  
 ID 3364-03-73  
 Revised Sheet 7  
 November 3, 2015

1014 1010 1006 1002 998 994 990 351 350 349 348 347 346

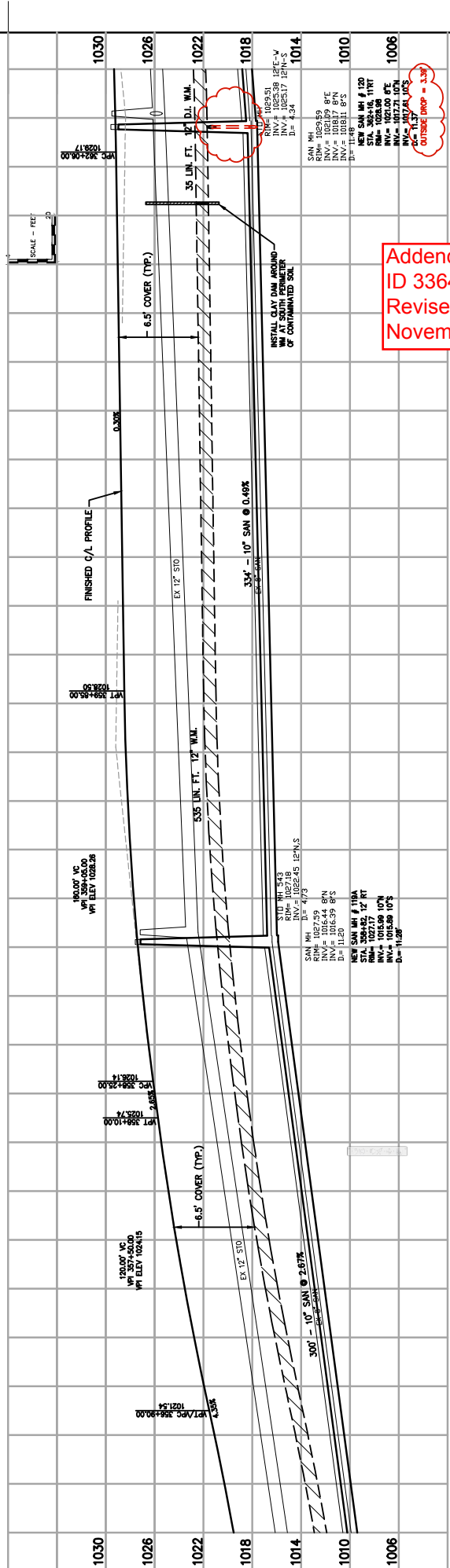
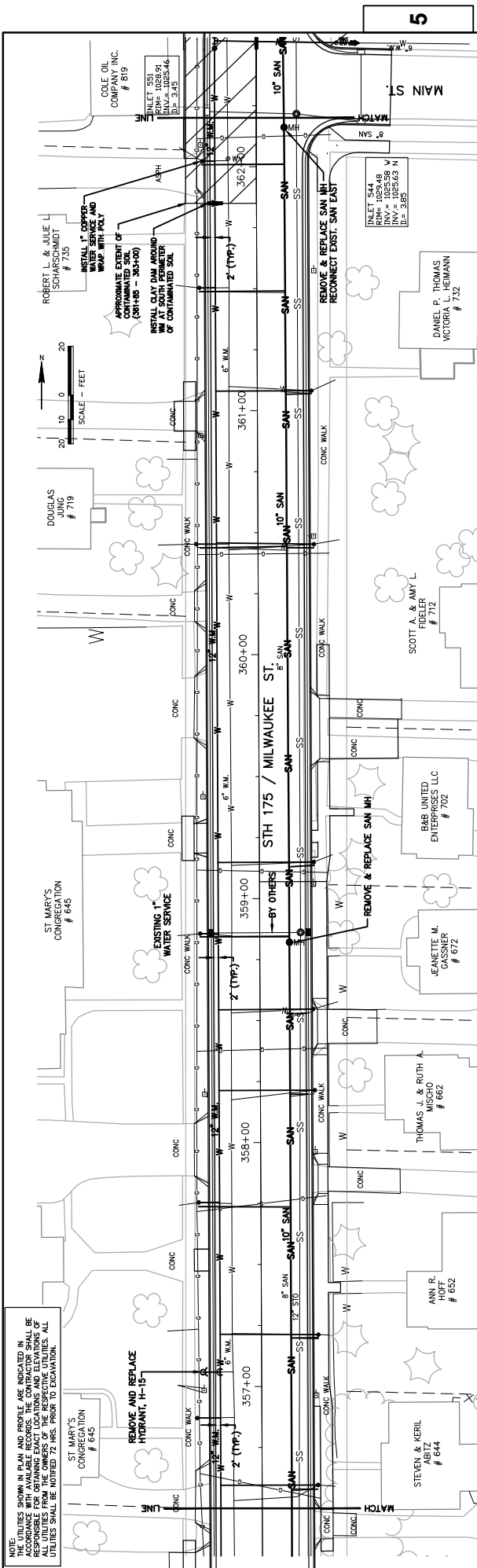
PROJECT NO: 3364-03-73 HWY: STH 175 COUNTY: DODGE

SANITARY SEWER AND WATERMAIN SHEET 7 E

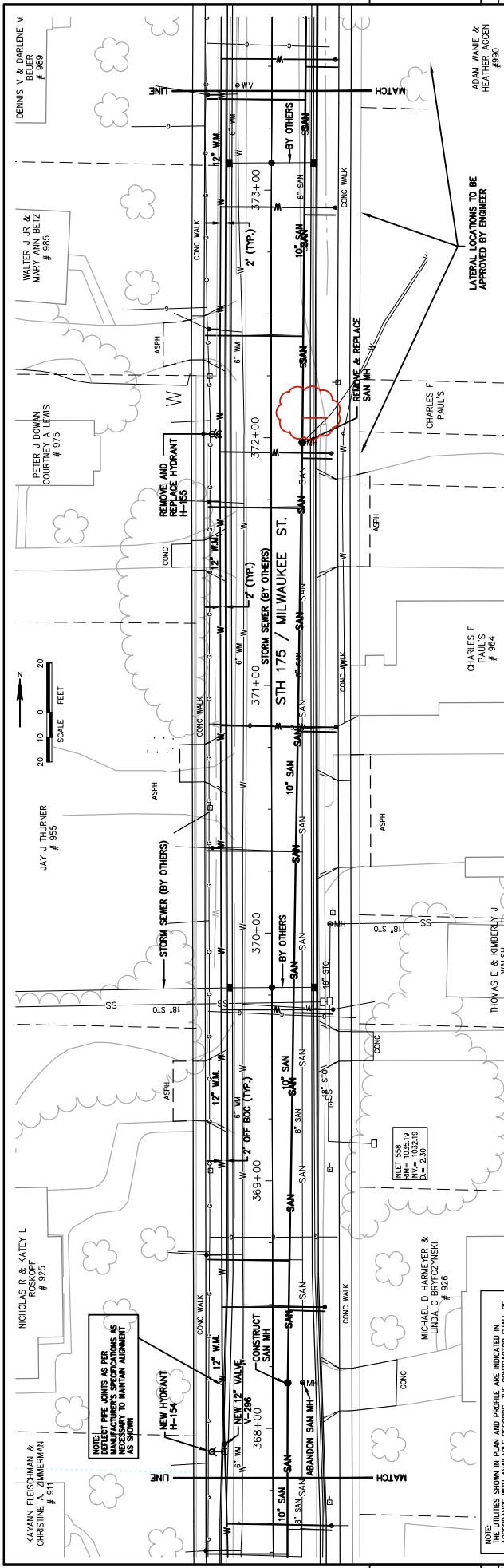
Source: W:\PROJECTS\10002\3364-03-73\3364-03-73\_STH\_175.dwg, model: Plot Date: 10/22/2015 8:13 AM, verbs: (-=175 utility, x=finished ci profile, utility plus manholes st., = curb gutter, x=loss rw 2007)

WSR07/ARDS SHEET 40

NOTE: UTILITIES SHOWN IN PLAN AND PROFILE ARE INDICATED IN ACCORDANCE WITH AVAILABLE RECORDS. THE CONTRACTOR SHALL BE RESPONSIBLE FOR OBTAINING EXACT LOCATIONS AND ELEVATIONS OF UTILITIES SHALL BE NOTIFIED 72 HRS. PRIOR TO EXCAVATION.



Addendum No. 02  
 ID 3364-03-73  
 Revised Sheet 9  
 November 3, 2015

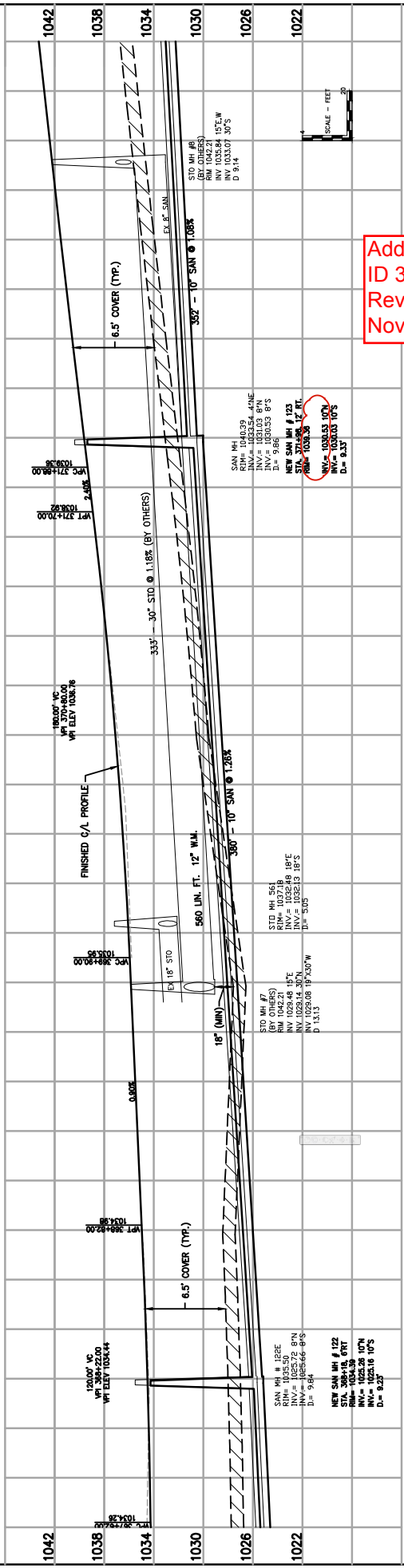


NOTE:  
 THE UTILITIES SHOWN IN PLAN AND PROFILE ARE INDICATED IN  
 THE RECORD DRAWINGS FOR THIS PROJECT. THE CONTRACTOR SHALL BE  
 RESPONSIBLE FOR OBTAINING EXACT LOCATIONS AND ELEVATIONS OF  
 ALL UTILITIES FROM THE OWNERS OF THE RESPECTIVE UTILITIES. ALL  
 UTILITIES SHALL BE NOTIFIED 72 HRS. PRIOR TO EXCAVATION.

NOTE:  
 DETECT PIPE JOINTS AS PER  
 MANUFACTURER'S SPECIFICATIONS AS  
 SHOWN TO MAINTAIN ALIGNMENT  
 AS SHOWN

LATERAL LOCATIONS TO BE  
 APPROVED BY ENGINEER

Addendum No. 02  
 ID 3364-03-73  
 Revised Sheet 11  
 November 3, 2015



PROJECT NO. 3364-03-73	HWY: STH 175	COUNTY: DODGE	370	371	372	373	11 E
SANITARY SEWER AND WATERMAIN			369	370	371	372	SHEET
SHEET			368	369	370	371	11 E

Source: W:\PROJECTS\10002\30075\00\368-03-73-S11-175.dwg, made: Plot Date: 10/23/2015 8:14 AM, user: (s-175 utility, x=finished ci profile, utility plus mistakes et., -cutt galter, x=iss rw 2007)

## SCHEDULE OF ITEMS

REVISED:

CONTRACT:  
20151110003PROJECT(S):  
3364-03-72  
3364-03-73FEDERAL ID(S):  
WISC 2015569  
N/A

CONTRACTOR : \_\_\_\_\_

LINE NO	ITEM DESCRIPTION	APPROX. QUANTITY AND UNITS	UNIT PRICE		BID AMOUNT	
			DOLLARS	CTS	DOLLARS	CTS
0230	460.1101 HMA Pavement Type E-1	4,608.000 TON	.		.	
0240	460.2000 Incentive Density HMA Pavement	2,950.000 DOL	1.00000		2950.00	
0250	460.4000 HMA Cold Weather Paving	1,152.000 TON	.		.	
0260	465.0120 Asphaltic Surface Driveways and Field Entrances	49.000 TON	.		.	
0270	521.0112 Culvert Pipe Corrugated Steel 12-Inch	83.000 LF	.		.	
0280	521.1012 Apron Endwalls for Culvert Pipe Steel 12-Inch	4.000 EACH	.		.	
0290	523.0524 Apron Endwalls for Culvert Pipe Reinforced Concrete Horizontal Elliptical 24x38-Inch	1.000 EACH	.		.	
0300	601.0411 Concrete Curb & Gutter 30-Inch Type D	7,627.000 LF	.		.	
0310	601.0600 Concrete Curb Pedestrian	107.000 LF	.		.	
0320	602.0410 Concrete Sidewalk 5-Inch	24,131.000 SF	.		.	

## SCHEDULE OF ITEMS

REVISED:

CONTRACT:  
20151110003PROJECT(S):  
3364-03-72  
3364-03-73FEDERAL ID(S):  
WISC 2015569  
N/A

CONTRACTOR : \_\_\_\_\_

LINE NO	ITEM DESCRIPTION	APPROX. QUANTITY AND UNITS	UNIT PRICE		BID AMOUNT	
			DOLLARS	CTS	DOLLARS	CTS
0430	611.0530 Manhole Covers Type J	5.000 EACH	.		.	
0440	611.0639 Inlet Covers Type H-S	18.000 EACH	.		.	
0450	611.1004 Catch Basins 4-FT Diameter	1.000 EACH	.		.	
0460	611.1230 Catch Basins 2x3-FT	16.000 EACH	.		.	
0470	611.2004 Manholes 4-FT Diameter	4.000 EACH	.		.	
0480	611.2006 Manholes 6-FT Diameter	3.000 EACH	.		.	
0490	611.8105 Adjusting Catch Basin Covers	17.000 EACH	.		.	
0500	611.8110 Adjusting Manhole Covers	9.000 EACH	.		.	
0510	619.1000 Mobilization	1.000 EACH	.		.	
0520	624.0100 Water	295.000 MGAL	.		.	
0530	625.0100 Topsoil	7,900.000 SY	.		.	

## SCHEDULE OF ITEMS

REVISED:

CONTRACT:  
20151110003PROJECT(S):  
3364-03-72  
3364-03-73FEDERAL ID(S):  
WISC 2015569  
N/A

CONTRACTOR : \_\_\_\_\_

LINE NO	ITEM DESCRIPTION	APPROX. QUANTITY AND UNITS	UNIT PRICE		BID AMOUNT	
			DOLLARS	CTS	DOLLARS	CTS
1180	SPV.0090 Special 04. Water Main, 8-Inch PVC	89.000 LF	.		.	
1190	SPV.0090 Special 05. Water Main, 12-Inch PVC	2,870.000 LF	.		.	
1200	SPV.0090 Special 06. Water Main, 12-Inch DI	115.000 LF	.		.	
1210	SPV.0090 Special 07. Water Service, 1-Inch Poly	1,415.000 LF	.		.	
1220	SPV.0090 Special 08. Sanitary Lateral, 6-Inch PVC	1,491.000 LF	.		.	
1230	SPV.0090 Special 09. Sanitary Sewer, 10-Inch PVC	2,968.000 LF	.		.	
1240	SPV.0090 Special 10. Abandon Sanitary Sewer	623.000 LF	.		.	
1250	SPV.0090 Special 11. Water Service, 1-Inch Copper	46.000 LF	.		.	
1260	SPV.0090 Special 12. Water Main, 8-Inch DI	20.000 LF	.		.	
1270	SPV.0090 Special 20. Pipe Underdrain 6-Inch Special	7,627.000 LF	.		.	
1280	SPV.0180 Special 01. Insulation 2-Inch	47.000 SY	.		.	

SCHEDULE OF ITEMS

REVISED:

CONTRACT:  
20151110003

PROJECT(S):  
3364-03-72  
3364-03-73

FEDERAL ID(S):  
WISC 2015569  
N/A

CONTRACTOR : \_\_\_\_\_

LINE NO	ITEM DESCRIPTION	APPROX. QUANTITY AND UNITS	UNIT PRICE		BID AMOUNT	
			DOLLARS	CTS	DOLLARS	CTS
1290	SPV.0180 Special 02. Geogrid Reinforcement	19,784.000 SY	.		.	
1300	SPV.0200 Special 01. Sanitary Manhole 48-Inch	103.060 VF	.		.	
1310	611.0545 Manhole Covers Type L	1.000 EACH	.		.	
1320	611.8120.S Cover Plates Temporary	24.000 EACH	.		.	
	SECTION 0001 TOTAL				.	
	TOTAL BID				.	