



# Wisconsin Department of Transportation

October 29, 2015

## Division of Transportation Systems Development

Bureau of Project Development  
4802 Sheboygan Avenue, Rm 601  
P O Box 7916  
Madison, WI 53707-7916

Telephone: (608) 266-1631  
Facsimile (FAX): (608) 266-8459

### NOTICE TO ALL CONTRACTORS:

**Proposal #11: 1300-13-74**  
**Lakefront Gateway**  
**IH 794 Ramps at Lincoln Memorial Drive**  
**IH 794**  
**Milwaukee County**

### Letting of November 10, 2015

This is Addendum No. 03, which provides for the following:

#### Special Provisions

Revised Special Provisions	
Article No.	Description
6	Utilities
46	Temporary Wall Wire Faced Mechanically Stabilized Earth, Item 532.0750.S
82	Concrete Masonry Overlay Decks Unit B-40-400-1D, Item SPV.0035.2001

Added Special Provisions	
Article No.	Description
197	Geotextile Fabrics

#### Schedule of Items

Revised Bid Item Quantities					
Bid Item	Item Description	Unit	Old Quantity	Revised Quantity	Proposal Total
532.0750.S	Temporary Wall Wire Faced Mechanically Stabilized Earth	SF	1,609	1,820	1,820

**Plan Sheets**

<b>Revised Plan Sheets</b>	
<b>Plan Sheet</b>	<b>Plan Sheet Title (brief description of changes to sheet)</b>
27	Revised Stationing for location of Temporary Wall Wire Faced MSE System. A General Note was added to clarify that furnishing and removing temporary surcharge fill material is included under the Temporary Wall Wire Faced bid item.
393	Revised Misc. Quantity Table for bid item 532.0750.S - Temporary Wall Wire Faced Mechanically Stabilized Earth

The responsibility for notifying potential subcontractors and suppliers of these changes remains with the prime contractor.

Sincerely,

*Mike Coleman*

Proposal Development Specialist  
Proposal Management Section

**ADDENDUM NO. 03**

**1300-13-74**

**October 29, 2015**

**Special Provisions**

**6. Utilities**

*Replace the field contact person under section titled **AT&T Wisconsin** with the following:*

Jay Bulanek  
2005 Pewaukee Road  
Waukesha, WI 53188  
Office: (262) 896-7669  
Mobile: (414) 491-2855  
[jb5175@att.com](mailto:jb5175@att.com)

**46. Temporary Wall Wire Faced Mechanically Stabilized Earth, Item 532.0750.S**

*Replace the last paragraph under the section titled **E Payment** with the following:*

Payment is full compensation for supplying a design and shop drawings; preparing the site, including all necessary excavation and disposal of materials; constructing the retaining system; constructing a temporary railing/ barrier system, providing backfill, backfilling and compacting; furnishing and installing temporary surcharge fill material, performing compaction testing; and removing and disposing of the temporary wall system and surcharge fill to the finished pavement subgrade elevation when consolidation is complete.

**82. Concrete Masonry Overlay Decks Unit B-40-400-1D, Item SPV.0035.2001**

*Replace the first paragraph under the section titled **B Materials** with the following:*

The contractor may use ready-mixed concrete for overlays containing polypropylene fibers. The polypropylene fibers shall be engineered synthetic reinforcing fibers of 100% polypropylene collated fibers.

**197. Geotextile Fabrics.**

Add the following to standard spec 645.2.5:

(3) Use Geotextile Fabric, Type SR (Subgrade Reinforcement) with the following physical properties:

TEST	METHOD	VALUE
Minimum Tensile Strength	ASTM D4632	110 lbs./inch
Maximum Elongation at Required Strength	ASTM D4632	5%
Minimum Puncture Strength	ASTM D4833	160 lb.
Maximum Apparent Opening Size	ASTM D4751	600 micrometer
Minimum Permittivity	ASTM D4491	0.4 sec-1

**Schedule of Items**

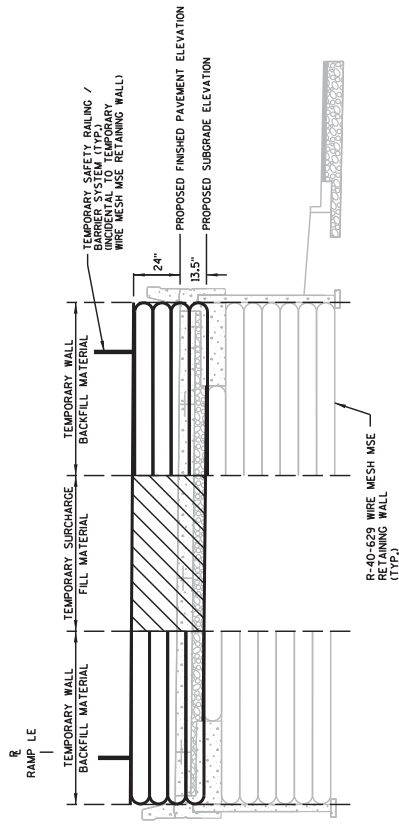
Attached, dated October 29, 2015, are the revised Schedule of Items Page 12.

**Plan Sheets**

The following 8½ x 11-inch sheets are attached and made part of the plans for this proposal:

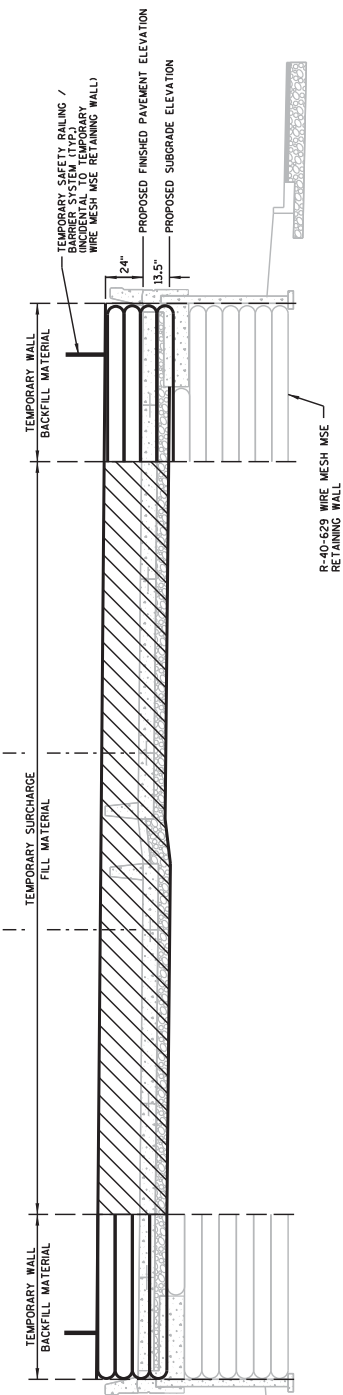
Revised: 27, 393

END OF ADDENDUM



NOTE:  
 THE PLACEMENT AND REMOVAL OF TEMPORARY SURCHARGE FILL  
 IS INCLUDED AS PART OF THE CONTRACT WORK. THE FILL SHALL  
 BE FACED MECHANICALLY STABILIZED EARTH, ITEM 532.0730'S

SECTION ALONG IH 794 EB EXIT RAMP  
 STA. 204+93 LE TO STA. 206+08 LE  
 (LOOKING EAST)



SECTION ALONG IH 794 WB ENTRANCE RAMP  
 STA. 107+05 LW TO STA. 108+37 LW  
 (LOOKING EAST)

SECTION ALONG IH 794 EB EXIT RAMP  
 STA. 206+08 LE TO STA. 207+42 LE  
 (LOOKING EAST)

Addendum No. 03  
 ID 1300-13-74  
 Revised Sheet 27  
 October 29, 2015

TEMPORARY WALL WIRE FACED MSE SYSTEM

TYPICAL SECTIONS NOT TO SCALE

PROJECT NO: 1300-13-74	COUNTY: MILWAUKEE	CONSTRUCTION DETAIL - TEMPORARY WALL WIRE FACED MSE	SHEET 27	E
FILE NAME : 021009_cad-dgn	PLOT DATE : 10/23/2015	PLOT BY : 1178	PLOT NAME :	WISDOT/CADD SHEET 42
HWY: IH 794				

TEMPORARY WALL WIRE FACED MECHANICALLY STABILIZED EARTH				CONCRETE STEPS			
CATEGORY 0010				CATEGORY 0020			
603.0760.S TEMPORARY WALL WIRE FACED MECHANICALLY STABILIZED EARTH				602.1000 CONCRETE STEPS			
LOCATION	FROM	TO	OFFSET	STATION	OFFSET	CL	LT
IH 794 EB EXIT RAMP	204+93	LE	207+42	LE	LT/RT		1820
PROJECT TOTAL				53			

CONCRETE BARRIER				CONCRETE BARRIER			
CATEGORY 0010				CATEGORY 0020			
603.1132 CONCRETE BARRIER				603.1142 CONCRETE BARRIER			
LOCATION	FROM	TO	OFFSET	STATION	OFFSET	CL	LT
IH 794 WB ENTRANCE RAMP	107+15	LW	108+83	LW	RT		
	108+37	LW	108+83	LW	LT		
	108+37	LW				46	
IH 794 EB ENTRANCE RAMP	328+19	LS	329+05	LS	RT		86
IH 794 EB EXIT RAMP	206+14	LE	207+90	LE	LT		
	207+42	LE	207+90	LE	RT		
PROJECT TOTALS				222			

CONCRETE BARRIER TEMPORARY PRECAST				CONCRETE STEPS			
CATEGORY 0010				CATEGORY 0020			
204.0090.S REMOVING CONCRETE BARRIER TEMPORARY PRECAST LEFT IN PLACE @ OTHERS				602.1000 CONCRETE STEPS			
LOCATION	LF	LF	LF	STATION	OFFSET	CL	LT
STAGE 1	..	..	..				
STA 199+78 - 200+75	LE						
STAGE 2	..	..	..				
STA 63+30 - 64+18	VB						
STA 62+89 - 63+60	JE						
STAGE 3	..	..	..				
STA 32+94 - 33+06	LN						
STAGE 4	..	..	..				
STA 32+94 - 33+56	LN						
PROJECT TOTALS				53			

PERMEABLE PAVEMENT SYSTEMS AND BIOFILTRATION BASINS			
ALL ITEMS CATEGORY 20			
SPV.0035.1006			
LOCATION	LF	LF	LF
CL-1	204		
CL-2	196		
CL-3	169		
CL-4	245		
CL-5	133		
CL-6	132		
CL-7	116		
CL-8	70		
BF-1		70	
BF-2		120	
BF-3		72	
BF-4		113	
PROJECT TOTALS			

Addendum No. 03  
ID 1300-13-74  
Revised Sheet 393  
October 29, 2015

PERMEABLE PAVEMENT SYSTEMS AND BIOFILTRATION BASINS			
ALL ITEMS CATEGORY 20			
SPV.0035.1009			
LOCATION	LF	LF	LF
CL-1	204		
CL-2	196		
CL-3	169		
CL-4	245		
CL-5	133		
CL-6	132		
CL-7	116		
CL-8	70		
BF-1		70	
BF-2		120	
BF-3		72	
BF-4		113	
PROJECT TOTALS			

## SCHEDULE OF ITEMS

REVISED:

CONTRACT:  
20151110011PROJECT(S):  
1300-13-74FEDERAL ID(S):  
N/A

CONTRACTOR : \_\_\_\_\_

LINE NO	ITEM DESCRIPTION	APPROX. QUANTITY AND UNITS	UNIT PRICE		BID AMOUNT	
			DOLLARS	CTS	DOLLARS	CTS
1130	517.0600 Painting Epoxy System (structure) 2002. B-40-916	LUMP	LUMP			.
1140	517.1010.S Concrete Staining (structure) 2001. R-40-627 **P**	SF	930.000	.		.
1150	517.1010.S Concrete Staining (structure) 2002. R-40-628 **P**	SF	17,478.000	.		.
1160	517.1010.S Concrete Staining (structure) 2003. R-40-629 **P**	SF	13,726.000	.		.
1170	520.8000 Concrete Collars for Pipe	EACH	2.000	.		.
1180	522.1012 Apron Endwalls for Culvert Pipe Reinforced Concrete 12-Inch	EACH	3.000	.		.
1190	522.1015 Apron Endwalls for Culvert Pipe Reinforced Concrete 15-Inch	EACH	1.000	.		.
1200	532.0750.S Temporary Wall Wire Faced Mechanically Stabilized Earth	SF	1,820.000	.		.
1210	550.2146 Piling CIP Concrete 14 X 0.375-Inch	LF	16,055.000	.		.
1220	550.2148 Piling CIP Concrete 14 X 0.50-Inch	LF	1,610.000	.		.