



# Wisconsin Department of Transportation

January 6, 2016

## Division of Transportation Systems Development

Bureau of Project Development  
4802 Sheboygan Avenue, Rm 601  
P O Box 7916  
Madison, WI 53707-7916

### NOTICE TO ALL CONTRACTORS:

Telephone: (608) 266-1631  
Facsimile (FAX): (608) 266-8459

**Proposal #06: 7371-00-70, WISC 2016 004**  
**CTH OT – CTH MH**  
**Halfway Creek Bridge B-32-0229**  
**CTH XX**  
**La Crosse County**

### Letting of January 12, 2016

This is Addendum No. 01, which provides for the following:

#### Special Provisions

Revised Special Provisions	
Article No.	Description
05	Revised the Village of Holmen subsection of the Utilities special provision to leave the underground storm sewer outfall pipe in place.

#### Schedule of Items

Added Bid Item Quantities					
Bid Item	Item Description	Unit	Old Quantity	Revised Quantity	Proposal Total
511.1100	Temporary Shoring	SF	0	267	267

#### Plan Sheets

Revised Plan Sheets	
Plan Sheet	Plan Sheet Title (brief description of changes to sheet)
52	Added Temporary Shoring at Pier
53	Added Quantity for Temporary Shoring; Revised Backfill Structure Note
55	Modified Wing 2 for Sanitary Sewer Outfall Pipe
56	Modified Wing 2 for Sanitary Sewer Outfall Pipe

The responsibility for notifying potential subcontractors and suppliers of these changes remains with the prime contractor.

Sincerely,

*Mike Coleman*

Proposal Development Specialist  
Proposal Management Section

**ADDENDUM NO. 01**

**7371-00-70**

**January 6, 2016**

**Special Provisions**

5. Utilities

*Replace entire section titled Village of Holmen with the following:*

Village of Holmen

The Village of Holmen has an underground sanitary sewer discharge line running parallel to CTH XX on the western side of the roadway from a manhole at State 26+31, 25' LT to an outfall at the southwest bridge wing wall.

This line will remain in place, and part of the line will run below the bottom outside corner of wing 2 as shown on the plans. Use caution to avoid damage to the existing pipe during construction.

**Schedule of Items**

Attached, dated January 6, 2016, are the revised Schedule of Items Page 7.

**Plan Sheets**

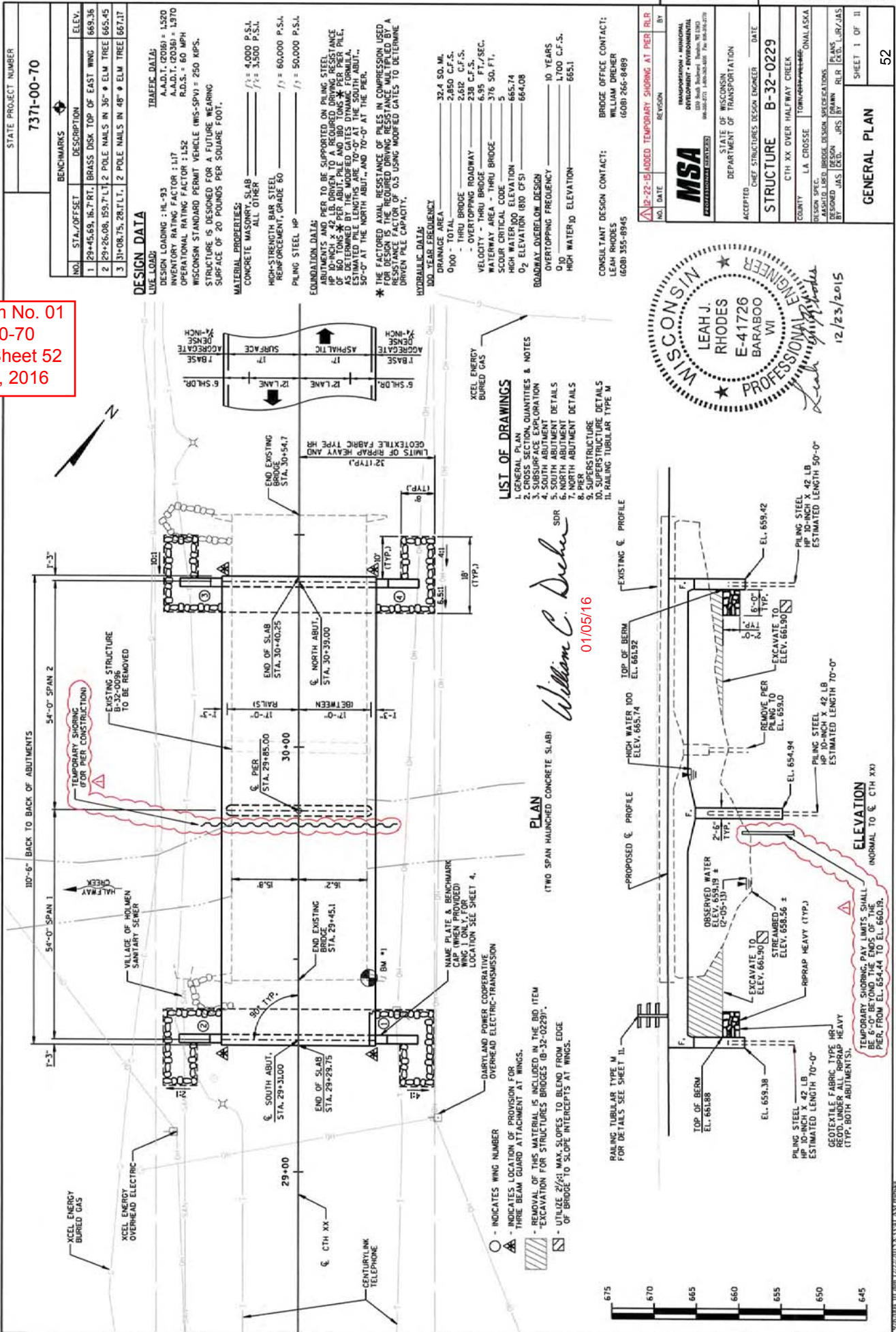
The following 8½ x 11-inch sheets are attached and made part of the plans for this proposal:

Revised: 52, 53, 55 and 56.

Added: None.

END OF ADDENDUM

Addendum No. 01  
 ID 7371-00-70  
 Revised Sheet 52  
 January 6, 2016



STATE PROJECT NUMBER  
**7371-00-70**

NO.	STA./OFFSET	DESCRIPTION	ELEV.
1	29+45.69, 16.7' RT.	BRASS DISK TOP OF EAST WING	669.36
2	29+26.08, 15.7' LT.	2 POLE NAILS IN 36" Ø ELM TREE	665.45
3	31+08.75, 28.1' LT.	2 POLE NAILS IN 48" Ø ELM TREE	667.47

**DESIGN DATA**

**TRAFFIC DATA:**  
 A.A.D.T. (2016) = 1,520  
 A.A.D.T. (2036) = 1,970  
 OPERATIONAL RATING FACTOR = 1.17  
 R.D.S. = 60 MPH  
 WISCONSIN STANDARD PERMIT VEHICLE (WIS-SPV) = 250 KIPS.  
 STRUCTURE IS DESIGNED FOR A FUTURE WEARING SURFACE OF 20 POUNDS PER SQUARE FOOT.

**MATERIAL PROPERTIES:**  
 CONCRETE MASONRY: SLAB  $f_c = 4,000$  P.S.I.  
 ALL OTHER  $f_c = 3,500$  P.S.I.  
 HIGH-STRENGTH BAR STEEL REINFORCEMENT, GRADE 60  $f_y = 60,000$  P.S.I.  
 PILING STEEL HP  $f_y = 50,000$  P.S.I.

**FOUNDATION DATA:**  
 BRIDGES AND PIERS TO BE SUPPORTED ON PILING. STEEL PILING SHALL BE DRIVEN TO A REQUIRED DRIVING RESISTANCE OF 80 TONS PER ABUT. PILE AND 180 TONS PER PIER PILE, AS DETERMINED BY THE MODIFIED GATES DYNAMIC FORMULA. THE PILING SHALL BE DRIVEN TO A MINIMUM OF 50'-0" AT THE NORTH ABUT., AND 70'-0" AT THE PIER.

**FACTORED AVAILABLE RESISTANCE OF PILES IN COMPRESSION USED FOR DESIGN SHALL BE LIMITED TO 0.5 TIMES THE UNMODIFIED DRIVEN PILE CAPACITY.**

**HYDRAULIC DATA:**  
 100-YEAR FREQUENCY  
 DRAINAGE AREA = 32.4 SQ. MI.  
 - THRU BRIDGE = 2,850 C.F.S.  
 - OVERTOPPING ROADWAY = 238 C.F.S.  
 VELOCITY - THRU BRIDGE = 6.95 FT./SEC.  
 WATERWAY AREA - THRU BRIDGE = 376 SQ. FT.  
 SCOUR CRITICAL CODE = 5  
 HIGH WATER LOW ELEVATION = 665.74  
 O2 ELEVATION (810 CFS) = 664.08

**ROADWAY OVERBELOW DESIGN**  
 OVERTOPPING FREQUENCY = 10 YEARS  
 HIGH WATER LOW ELEVATION = 665.1  
 HIGH WATER HIGH ELEVATION = 665.1

CONSULTANT DESIGN CONTACT:  
 LEAH RHODES  
 (608) 355-8945

BRIDGE OFFICE CONTACT:  
 WILLIAM DREHER  
 (608) 266-8489

NO. DATE: **B-22-15** ADDED TEMPORARY SHORING AT PIER R/LR BY

**MSA**  
 PROFESSIONAL ENGINEERS  
 TRANSPORTATION • ENVIRONMENTAL DEVELOPMENT • INFRASTRUCTURE  
 1200 South Industrial Boulevard, Waukesha, WI 53090  
 (608) 785-1400 • Fax: (608) 785-0700

STATE OF WISCONSIN  
 DEPARTMENT OF TRANSPORTATION  
 ACCEPTED: \_\_\_\_\_ DATE: \_\_\_\_\_  
 CHIEF STRUCTURES DESIGN ENGINEER

STRUCTURE **B-32-0229**

COUNTY: \_\_\_\_\_  
 L.A. CROSS: \_\_\_\_\_  
 DESIGNER: \_\_\_\_\_  
 DESIGNED BY: \_\_\_\_\_  
 DRAWN BY: \_\_\_\_\_  
 CHECKED BY: \_\_\_\_\_



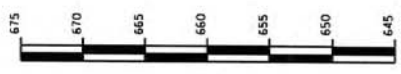
- LIST OF DRAWINGS**
- GENERAL PLAN
  - GROSS SECTION, QUANTITIES & NOTES
  - SUBSURFACE EXPLORATION
  - SOUTH ABUTMENT DETAILS
  - NORTH ABUTMENT DETAILS
  - PIER DETAILS
  - PIER STRUCTURE DETAILS
  - SUPERSTRUCTURE DETAILS
  - RAILING TUBULAR TYPE M

*William C. Decker*  
 SDR  
 01/05/16

**PLAN**

(TWO SPAN HAUNCHED CONCRETE SLAB)

- - INDICATES WING NUMBER
- △ - INDICATES LOCATION OF PROVISION FOR THREE BEAM GUARD ATTACHMENT AT WINGS.
- ▨ - REMOVAL OF THIS MATERIAL IS INCLUDED IN THE BID ITEM "EXCAVATION FOR STRUCTURES BRIDGES (B-32-0229)".
- ▩ - UTILIZE 2/3:1 MAX. SLOPES TO BLEND FROM EDGE OF BRIDGE TO SLOPE INTERCEPTS AT WINGS.



STATE PROJECT NUMBER

7371-00-70

**GENERAL NOTES**

DRAWINGS SHALL NOT BE SCALED.

BAR STEEL REINFORCEMENT SHALL BE EMBEDDED 2" CLEAR UNLESS SHOWN OR NOTED OTHERWISE.

THE FIRST DIGIT OF A THREE DIGIT BAR MARK AND THE FIRST TWO DIGITS OF A FOUR DIGIT BAR MARK SIGNIFY THE BAR SIZE.

PLACE RIPRAP HEAVY AND GEOTEXTILE FABRIC TYPE HR TO THE LIMITS SHOWN ON SHEET 1 AND ON THE ABUTMENT SHEETS.

THE EXISTING GROUNDLINE SHALL BE THE UPPER LIMITS OF "EXCAVATION FOR STRUCTURES" AT THE ABUTMENTS AND PIERS.

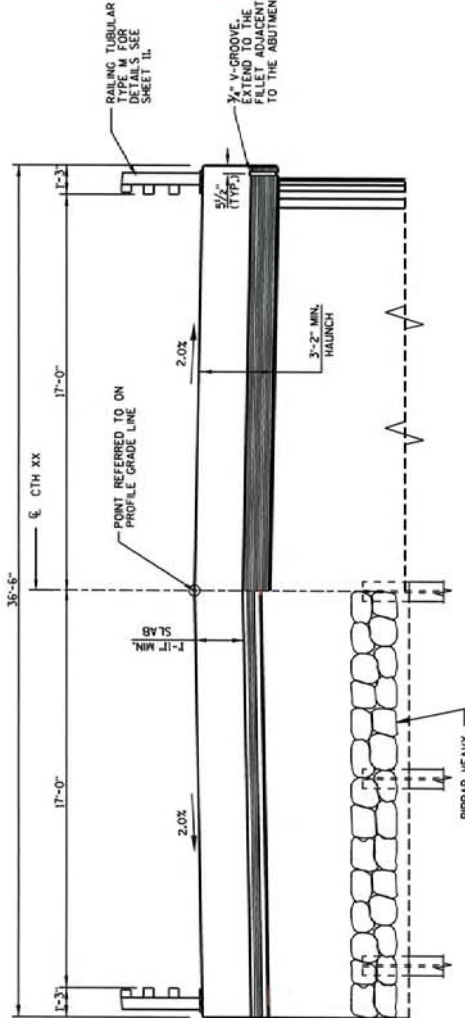
SLAB FALSCORW SHALL BE SUPPORTED ON PILES OR THE SUBSTRUCTURE, UNLESS AN ALTERNATE METHOD IS APPROVED BY THE ENGINEER.

THIS STRUCTURE WILL REPLACE EXISTING BRIDGE, B-32-00396, A 109.8 FT. LONG, TWO SPAN HAUNCHED CONCRETE SLAB BRIDGE ON CONCRETE SILL ABUTMENTS.

AT THE BACKFACE OF ABUTMENTS ALL EXCAVATED VOLUME WHICH CAN NOT BE PLACED BEFORE ABUTMENT CONSTRUCTION AND IS NOT OCCUPIED BY THE NEW STRUCTURE, SHALL BE BACKFILLED WITH BACKFILL STRUCTURE. THE QUANTITY FOR BACKFILL STRUCTURE IS CALCULATED BASED ON FIGURE 2-8-1 IN THE WISDOT BRIDGE MANUAL.

PROTECTIVE SURFACE TREATMENT SHALL BE APPLIED TO THE TOP AND EDGES OF SLAB, TO THE OUTSIDE 1'-0" OF THE UNDERSIDE OF SLAB, TO THE TOPS OF WINGS, AND TO THE EXPOSED FRONT FACES OF WINGS.

ELEVATIONS SHOWN ON THIS PLAN ARE REFERENCED TO NAVD 88 DATUM, 1996 ADJUSTED, AND WERE ESTABLISHED AT THE SITE USING GPS TECHNOLOGY.



**AT ABUTMENTS**  
**CROSS SECTION THRU BRIDGE**  
 LOOKING NORTH

*William C. Dehn* SDR  
 01/05/16

VPI STA = 26+31.50  
 VPI EL = 665.80

VPI STA = 29+51.50  
 VPI EL = 670.53

CURVE LEN = 640.00  
 K = 246.15

Addendum No. 01  
 ID 7371-00-70  
 Revised Sheet 53  
 January 6, 2016

PROFILE GRADE LINE - CTH XX

**TOTAL ESTIMATED QUANTITIES**

ITEM NUMBER	BID ITEM	UNIT	SOUTH ABUT.	PIER	NORTH ABUT.	SUPER	TOTAL
203.05005.01	REMOVING OLD STRUCTURE OVER WATERWAY STATION 30+00	LS	-	-	-	-	1
206.1000.01	EXCAVATION FOR STRUCTURES BRIDGES B-32-0229	LS	-	-	-	-	1
210.0100	BACKFILL STRUCTURE	CY	160	-	160	-	320
502.0100	CONCRETE MASONRY BRIDGES	CY	33	32	33	309	407
502.3200	PROTECTIVE SURFACE TREATMENT	SY	13	-	13	321	347
505.0000	BAR STEEL REINFORCEMENT HS STRUCTURES	LB	1735	1620	1735	57040	59090
511.1100	TEMPORARY SHORING	SF	-	267	-	-	267
513.4061.01	RAILING TUBULAR TYPE M B-32-0229	LF	8	-	8	-	225
516.0500	RUBBERIZED MEMBRANE WATERPROOFING	SY	8	-	8	-	16
530.1100	PILING STEEL HP 10-INCH x 42 LB	LF	350	700	250	-	1300
606.0300	RRRAP HEAVY	CY	45	-	45	-	90
632.0405	PIPE UNDERDRAIN WRAPPED 6-INCH	LF	80	-	80	-	160
645.0120	GEOTEXTILE FABRIC TYPE HR	SY	100	-	100	-	200
<b>NON-BID ITEMS</b>							
	PERFORMED FILLER	SIZE	-	-	-	-	1/4", 3/4"



NO. DATE REVISION BY  
 10-22-15 10:00 AM TYPGRAPHY, SHORING AT PIER B.R.  
 10-22-15 10:00 AM EXCAVATION QUOTE B.R.  
 STATE OF WISCONSIN  
 DEPARTMENT OF TRANSPORTATION  
 STRUCTURE B-32-0229  
 DRAWN BY: RLR  
 REVISION: RLR  
 PLANS CDD: LJP  
 CROSS SECTION, QUANTITIES & NOTES  
 SHEET 2 OF 11  
 53

STATE PROJECT NUMBER

7371-00-70

*William C. Decker* SDR  
01/05/16

NOTE - FOR WING ELEVATIONS AND DETAILS, SEE SHEET 5.

A505 BARS @ 1'-0" CENTERS MAY BE PLACED AFTER CONCRETE IS POURED BEFORE INITIAL SET HAS TAKEN PLACE.

BENCH MARK CAP WHEN SUPPLIED

NAME PLATE - WING 1 ONLY (F.F.)

A504 SEE PILE PLAN FOR SPACING

HP 10-INCH X 42 LB (TYP.)

EL. 665.74  
EL. 665.38  
EL. 668.04 (TYP.)

EL. 665.63 (TYP.)

EL. 668.04 (TYP.)

EL. 661.88

EL. 608.24

EL. 608.24

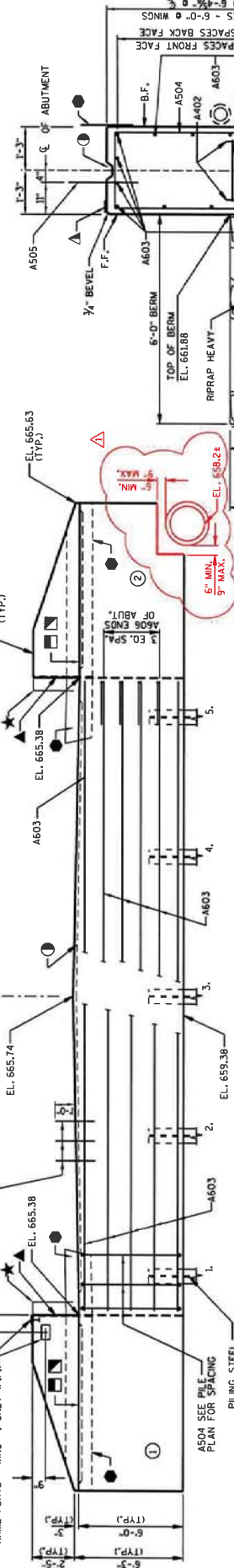
EL. 608.24

EL. 608.24

EL. 608.24

EL. 608.24

EL. 608.24

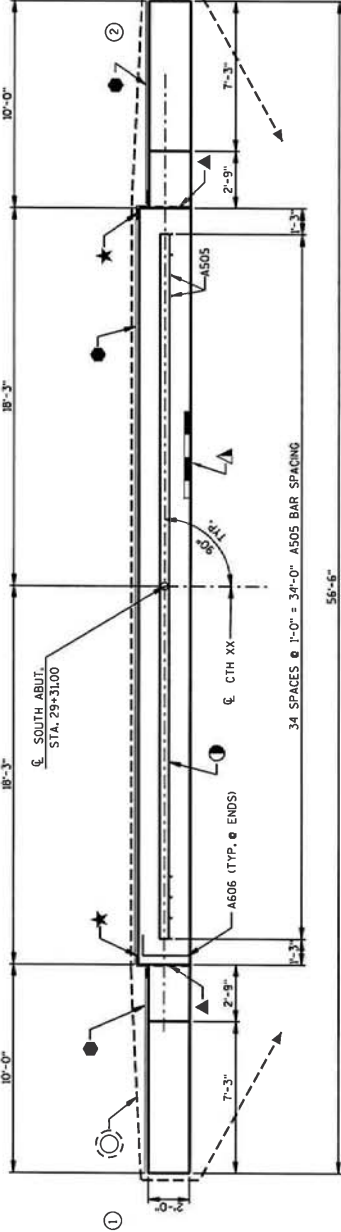


ELEVATION (LOOKING AT FRONT FACE)

ELEVATION (LOOKING AT BACK FACE)

FRONT FACE BAR STEEL REIN.

BACK FACE BAR STEEL REIN.



TYPICAL SECTION THRU ABUTMENT

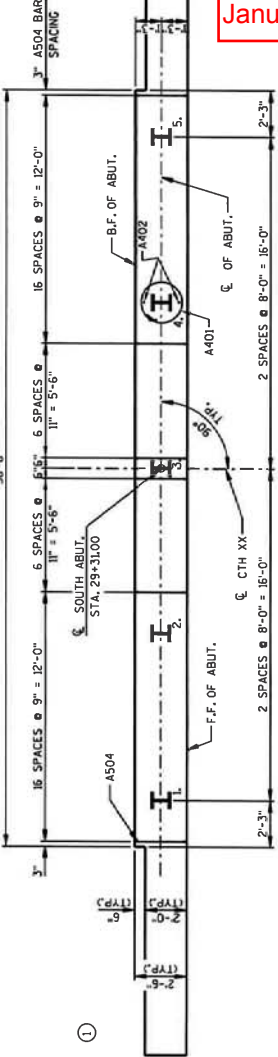
LEGEND

- 1/2" FILLER EXTEND AS SHOWN, SEAL ALL EXPOSED HORIZ. & VERT. SURFACES OF FILLER WITH NON-STAINING GRAY, NON-BITUMINOUS JOINT SEALER, 1" DEEP & HOLD 1/8" BELOW SURFACE OF CONCRETE.
- PIPE UNDERDRAIN WRAPPED 6-INCH SLOPE, 0.5X MIN. TO SUITABLE DRAINAGE. PROVIDE RODENT PROTECTION AT ENDS OF PIPE, SEE RODENT SHIELD DETAIL, SHEET 1.
- HORIZONTAL 18" WIDE RUBBERIZED MEMBRANE WATERPROOFING. EXTEND FROM BRIDGE SEAT TO TOP OF WINGS.
- VERTICAL 18" WIDE RUBBERIZED MEMBRANE WATERPROOFING. EXTEND FROM BRIDGE SEAT TO TOP OF WINGS.
- KEYS CONSTRUCTION JOINT FORMED BY BEVELED 2x6.
- 3/4" X 3/4" GROOVE ON FRONT FACE OF WING WALL, REOD. ONLY WHERE CONSTRUCTION JOINT IS USED.
- OPTIONAL KEYS CONSTRUCTION JOINT ON WING FORMED BY KEYS AND FILLER. USE KEYS AND FILLER FOR ALL CONCRETE MASONRY BRIDGES.
- 4" X 3/4" FILLER EXTEND FULL LENGTH OF ABUTMENT BETWEEN EDGES OF SLAB.

INDICATES WING NUMBER. CL - CLEAR B.F. - BACK FACE



Addendum No. 01  
ID 7371-00-70  
Revised Sheet 55  
January 6, 2016



PLAN

PILE PLAN

Revision table with columns for NO., DATE, REVISION, and BY.

STRUCTURE B-32-0229

SOUTH ABUTMENT

SHEET 4 OF 11

55

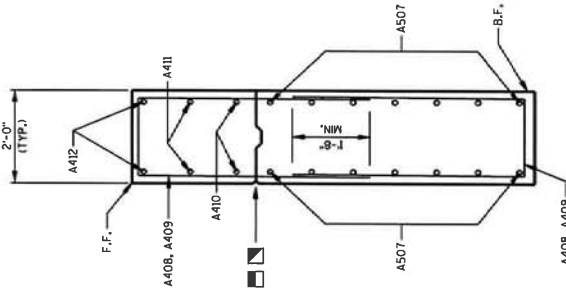
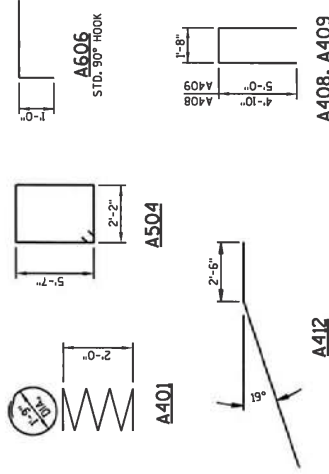
STATE PROJECT NUMBER

7371-00-70

**BILL OF BARS**  
(COATED) 810 LBS.  
(UNCOATED) 1735 LBS.

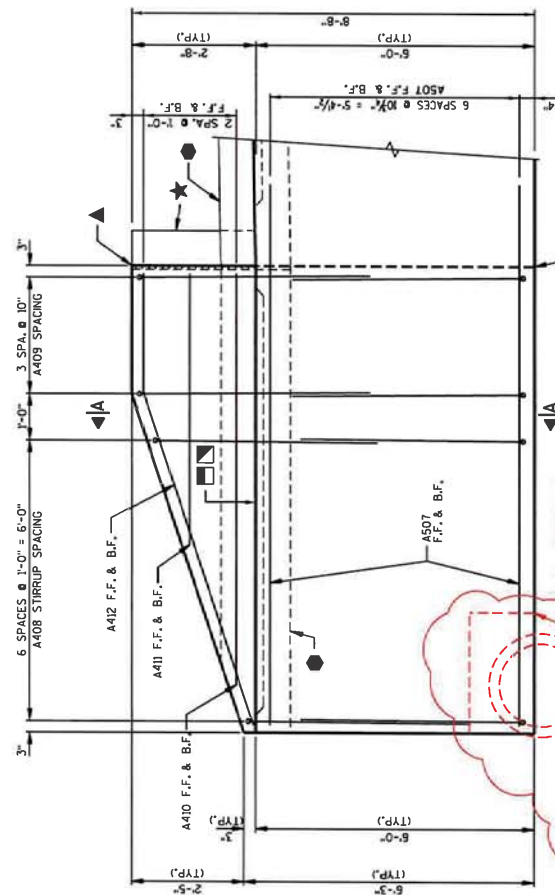
MARK	NUMBER REQUIRED	LENGTH	BENT	LOCATION
COATED	UNCOATED			
A401	5	28'-0"	X	ABUTMENT BODY - 1 SPIRAL WRAP @ EACH PILING
A402	10	2'-3"		ABUTMENT BODY - 2 @ EACH PILING - VERT.
A603	15	35'-2"	X	ABUTMENT BODY - HORIZ.
A504	46	16'-2"	X	ABUTMENT BODY - STIRRUP - VERT.
A505	35	2'-0"	X	ABUTMENT BODY - STIRRUP - HORIZ.
A606	8	3'-0"	X	ABUTMENT BODY - END BASE - HORIZ.
A407	28	11'-2"	X	WINGS 1 & 2 - STIRRUP - VERT.
A408	28	11'-2"	X	WINGS 1 & 2 - TOP - F.F. & B.F. - HORIZ.
A409	16	8'-9"	X	WINGS 1 & 2 - TOP - F.F. & B.F. - HORIZ.
A410	4	10'-0"	X	WINGS 1 & 2 - TOP - F.F. & B.F. - HORIZ.
A412	4	10'-0"	X	WINGS 1 & 2 - TOP - F.F. & B.F. - HORIZ.

DIMENSIONS IN BENDING DETAILS ARE OUT TO OUT OF BAR.



SECTION A-A THRU WING

WING 1 SHOWN  
WING 2 OPPOSITE HAND



ELEVATION

FORM CONCRETE AROUND PIPE AS SHOWN ON SHEET 4.  
FIELD ADJUST REINFORCING AS NEEDED TO MAINTAIN 2"  
MIN. CLEARANCE BETWEEN BARS. ALL BARS TO BE PLACED OUT  
24" CONCRETE PIPE, WING 2 ONLY

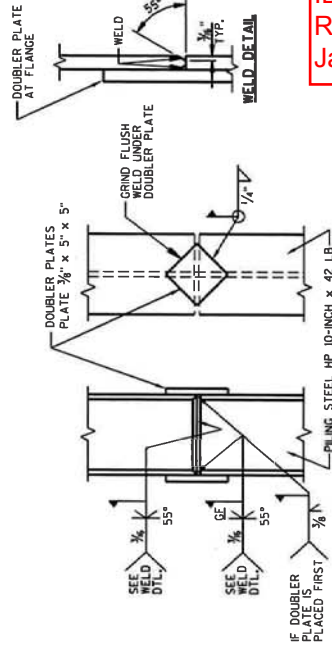
FORM CONCRETE AROUND PIPE AS SHOWN ON SHEET 4.  
FIELD ADJUST REINFORCING AS NEEDED TO MAINTAIN 2"  
MIN. CLEARANCE BETWEEN BARS. ALL BARS TO BE PLACED OUT  
24" CONCRETE PIPE, WING 2 ONLY

*William C. Dehn* SDR

01/05/16



1/5/2016



PILE SPLICE DETAILS

NO.	DATE	REVISION	RUR	BY
1	1-5-16	WING 2 MODIFICATIONS FOR PIPE		

STATE OF WISCONSIN  
DEPARTMENT OF TRANSPORTATION

STRUCTURE B-32-0229

DRAWN BY: RLR  
CHECKED BY: JAS

SOUTH ABUTMENT DETAILS  
SHEET 5 OF 11

56

Addendum No. 01  
ID 7371-00-70  
Revised Sheet 56  
January 6, 2016

SCHEDULE OF ITEMS

REVISED:

CONTRACT:  
20160112006

PROJECT(S):  
7371-00-70

FEDERAL ID(S):  
WISC 2016004

CONTRACTOR : \_\_\_\_\_

LINE NO	ITEM DESCRIPTION	APPROX. QUANTITY AND UNITS	UNIT PRICE		BID AMOUNT	
			DOLLARS	CTS	DOLLARS	CTS
0650	ASP.1T0A On-the-Job Training Apprentice at \$5.00/HR	300.000 HRS	5.00000		1500.00	
0660	ASP.1T0G On-the-Job Training Graduate at \$5. 00/HR	300.000 HRS	5.00000		1500.00	
0670	SPV.0060 Special 01. Utility Line Opening (ULO)	2.000 EACH	.		.	
0680	511.1100 Temporary Shoring	267.000 SF	.		.	
	SECTION 0001 TOTAL				.	
	TOTAL BID				.	