



Wisconsin Department of Transportation

December 8, 2015

Division of Transportation Systems Development

Bureau of Project Development
4802 Sheboygan Avenue, Rm 601
P O Box 7916
Madison, WI 53707-7916

Telephone: (608) 266-1631
Facsimile (FAX): (608) 266-8459

NOTICE TO ALL CONTRACTORS:

Proposal #20: 2200-16-71
Moreland Boulevard
Manhattan Drive to I-94
USH 18
Waukesha County

Letting of January 12, 2016

This is Addendum No. 01, which provides for the following:

Plan Sheets

Added Plan Sheets	
Plan Sheet	Plan Sheet Title (brief description of why sheet was added)
713A To 713F	Structure S-67-0319

Plan Sheets

The following 8½ x 11-inch sheets are attached and made part of the plans for this proposal:
Added: 713A – 713F.

The responsibility for notifying potential subcontractors and suppliers of these changes remains with the prime contractor.

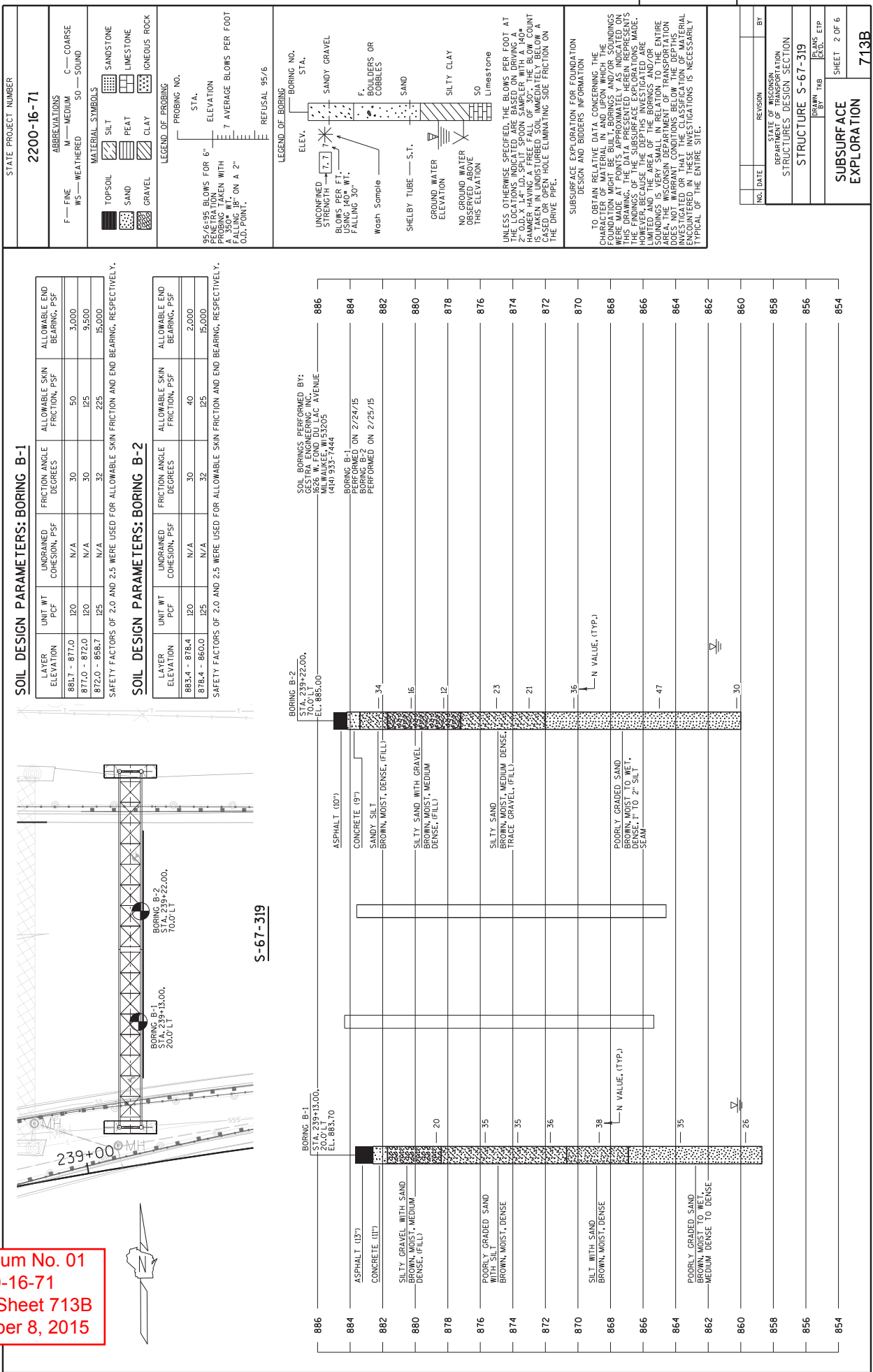
Sincerely,

Mike Coleman

Proposal Development Specialist
Proposal Management Section

END OF ADDENDUM

Addendum No. 01
 ID 2200-16-71
 Added Sheet 713B
 December 8, 2015

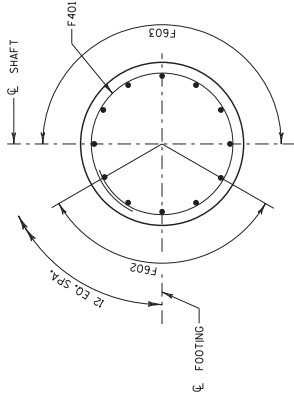


BILL OF BARS

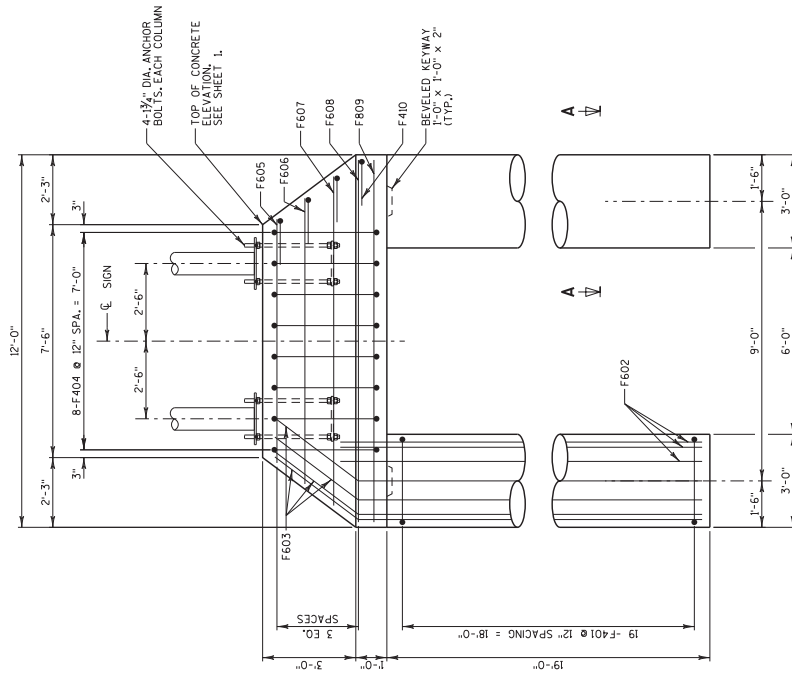
BAR MARK	COAT REQ'D	LENGTH	THICKNESS	LOCATION	
F401	X	3#	8'-11"	X	FOOTING - HOODPS
F602	X	10	21'-3"	X	FOOTING - VERTICAL
F603	X	14	23'-0"	X	FOOTING - VERTICAL
F604	X	8	7'-4"	X	FOOTING - VERTICAL
F605	X	2	8'-7"	X	FOOTING - HORIZONTAL
F606	X	2	9'-11"	X	FOOTING - HORIZONTAL
F607	X	2	11'-2"	X	FOOTING - HORIZONTAL
F608	X	5	11'-6"	X	FOOTING - HORIZONTAL
F609	X	16	3'-1"	X	FOOTING - HORIZONTAL

QUANTITY OF BARS IN TABLE IS FOR ONE FOOTING

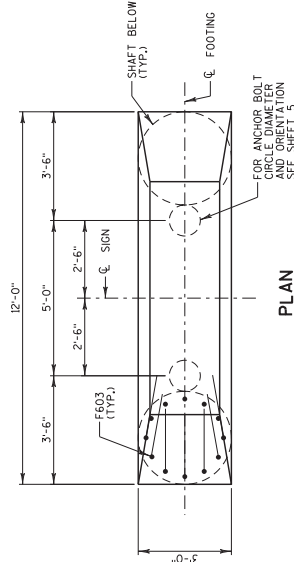
Addendum No. 01
ID 2200-16-71
Added Sheet 713C
December 8, 2015



SECTION A-A

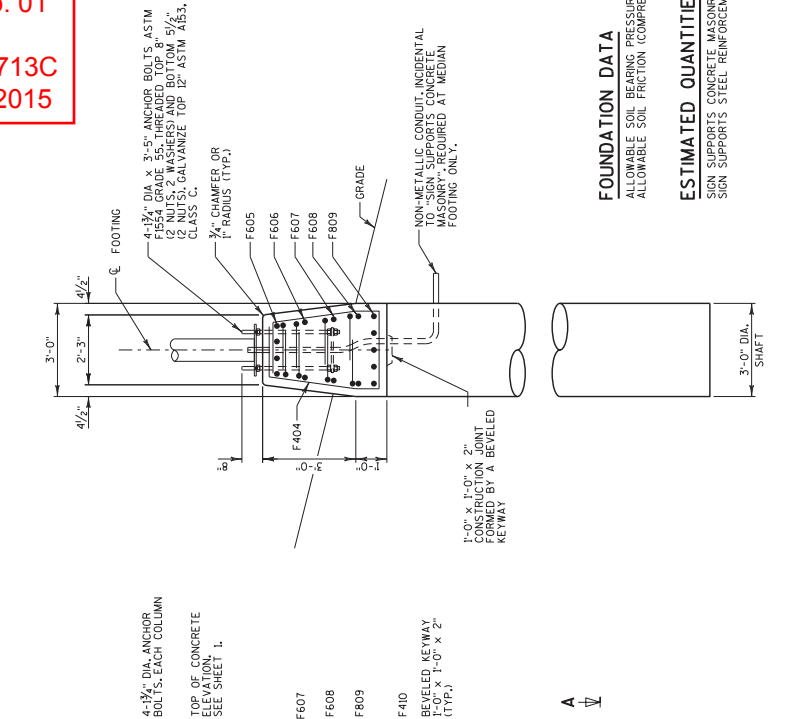


ELEVATION

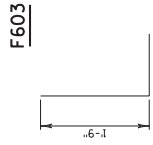
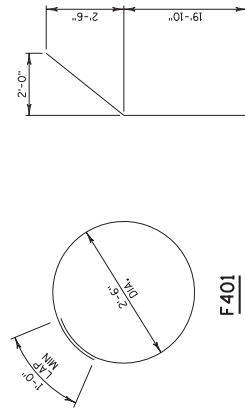


PLAN

SECTION A-A



END VIEW



F410

GENERAL NOTES

DRAWINGS SHALL NOT BE SCALED.
BAR STEEL REINFORCEMENT SHALL BE EMBEDDED 3" CLEAR UNLESS OTHERWISE NOTED.
ALL REINFORCING BARS ARE ENGLISH THE FIRST DIGIT OF A THREE DIGIT BAR MARK OR THE FIRST TWO DIGITS OF A FOUR DIGIT BAR MARK SIGNIFIES THE BAR SIZE.
SEE SHEET 5 FOR ANCHOR BOLT CIRCLE DIAMETER AND DETAILS.

FOUNDATION DATA

ALLOWABLE SOIL BEARING PRESSURE = 15,000 PSF
ALLOWABLE SOIL FRICTION (COMPRESSION) = 125

ESTIMATED QUANTITIES (1 FTG.)

SIGN SUPPORTS CONCRETE MASONRY = 15 CY
SIGN SUPPORTS STEEL REINFORCEMENT HS. = 1,420 LB

GENERAL NOTES

DRAWINGS SHALL NOT BE SCALED.
BAR STEEL REINFORCEMENT SHALL BE EMBEDDED 3" CLEAR UNLESS OTHERWISE NOTED.
ALL REINFORCING BARS ARE ENGLISH THE FIRST DIGIT OF A THREE DIGIT BAR MARK OR THE FIRST TWO DIGITS OF A FOUR DIGIT BAR MARK SIGNIFIES THE BAR SIZE.
SEE SHEET 5 FOR ANCHOR BOLT CIRCLE DIAMETER AND DETAILS.

ESTIMATED QUANTITIES (1 FTG.)

SIGN SUPPORTS CONCRETE MASONRY = 15 CY
SIGN SUPPORTS STEEL REINFORCEMENT HS. = 1,420 LB

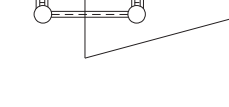
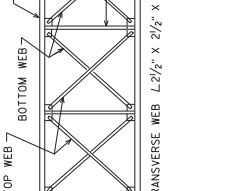
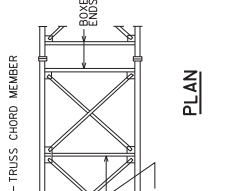
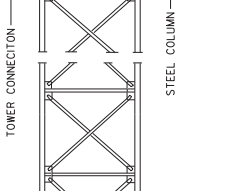
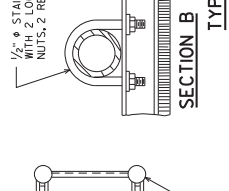
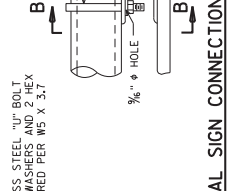
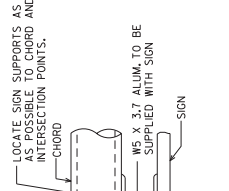
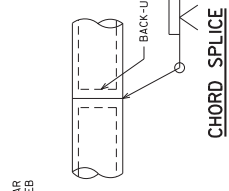
NO.	DATE	REVISION	BY

STATE OF WISCONSIN
DEPARTMENT OF TRANSPORTATION
STRUCTURES DESIGN SECTION
STRUCTURE S-67-319
DRAWN BY:
CHECKED BY:
PLANS []
ELEV. []
ETP []
SHEET 3 OF 6
FOOTING DETAILS 713C

PLOT SCALE : 2:000000 ' / FT.

PLOT DATE : 4/21/2015

FILE NAME : C:\Users\stomes\Google Drive\TKB Projects\Signs\S-67\5-67-319\Cadd\S-67-319_03-Footing-details.dgn



CHORD SPLICE

LOCATE SIGN SUPPORTS AS NEAR CHORD AND WEB INTERSECTION POINTS.

CHORD

BACK-UP BAR

100% RT OR UT

TYPICAL SIGN CONNECTION

1/2" ϕ STAINLESS STEEL BOLT AND NUTS, 2 REQUIRED PER WS X 3/4"

3/8" ϕ HOLE

WS X 3/4 ALUM. TO BE SUPPLIED WITH SIGN

SECTION B

SECTION A

TOP WEB

FRONT WEB

TRANSVERSE WEB

BOTTOM WEB

CHORD

REAR WEB

BOTTOM WEB

ELEVATION
(LOOKING UPSTATION)

BOX ENDS AT SUPPORTS & COUPLINGS

L 3" X 3" X 1/4"

THE GENERAL PATTERN SHOWN ABOVE IS TO BE MAINTAINED WHEN ASSEMBLING TRUSSES. NOTE DIRECTION OF DIAGONALS AT JOINTS.

END VIEW

5'-0" MAX.

APPROX. 5'-0" SPA.

APPROX. 5'-0" SPA.

7/8" TO 1'-0" COUPLING END

TOWER CONN. END

TOWER CONN. END

TRUSS ARRANGEMENT

FABRICATOR MAY MAKE TRUSSES ANY LENGTH KEEPING A SECTION A MINIMUM OF 20'-0" & A MULTIPLE OF 5'-0". CHORD FIELD SPLICES SHALL BE MADE WITH COUPLINGS. CHORD SHOP SPLICE SHALL BE THE WELDED SPLICE SHOWN ABOVE.

NOTES

DRAWINGS SHALL NOT BE SCALED.

STEEL COLUMN PIPE SHALL BE API SPEC. 5L GRADE X42 Fy = 42,000 P.S.I. **

ALL STEEL PIPE MEMBERS OF TRUSS SHALL BE API SPEC. 5L GRADE X42 Fy = 42,000 P.S.I. **

PLATES, BARS AND STRUCTURAL ANGLES SHALL BE ASTM A709 GRADE 36 Fy = 36,000 P.S.I.

ALL STRUCTURAL STEEL MEMBERS SHALL BE GALVANIZED.

ALL BOLTED CONNECTIONS SHALL BE MADE WITH 3/4" ϕ A325 BOLTS, GALVANIZED ASTM A193, CLASS C, AND MADE WITH DTI WASHERS.

WELDED CONNECTIONS CAN BE USED IN LIEU OF BOLTED CONNECTIONS, IF UNIT CAN BE GALVANIZED IN ONE PIECE.

STEEL ANCHOR BOLTS SHALL MEET THE REQUIREMENTS OF ASTM F1554 GRADE 55, Fy = 55,000 PSI

THE UPPER 12" OF ANCHOR BOLTS, NUTS AND WASHERS SHALL BE GALVANIZED IN ACCORDANCE WITH THE AASHTO SPECIFICATION AS STATED IN SECTION 641 OF THE WISDOT STANDARD SPECIFICATIONS.

WELD TEST AS PER AWS D11.

** ALTERNATE MATERIAL FOR COLUMN AND CHORD, LESS THAN 16" DIAMETER MAY BE ASTM 1500 GRADE B Fy = 42,000 P.S.I., GRADE C Fy = 46,000 P.S.I., OR ASTM A53 GRADE B Fy = 35,000 P.S.I.

SECTION B

1/2" ϕ STAINLESS STEEL BOLT AND NUTS, 2 REQUIRED PER WS X 3/4"

3/8" ϕ HOLE

WS X 3/4 ALUM. TO BE SUPPLIED WITH SIGN

SECTION A

TOP WEB

FRONT WEB

TRANSVERSE WEB

BOTTOM WEB

CHORD

REAR WEB

BOTTOM WEB

ELEVATION
(LOOKING UPSTATION)

BOX ENDS AT SUPPORTS & COUPLINGS

L 3" X 3" X 1/4"

THE GENERAL PATTERN SHOWN ABOVE IS TO BE MAINTAINED WHEN ASSEMBLING TRUSSES. NOTE DIRECTION OF DIAGONALS AT JOINTS.

END VIEW

5'-0" MAX.

APPROX. 5'-0" SPA.

APPROX. 5'-0" SPA.

7/8" TO 1'-0" COUPLING END

TOWER CONN. END

TOWER CONN. END

TRUSS ARRANGEMENT

FABRICATOR MAY MAKE TRUSSES ANY LENGTH KEEPING A SECTION A MINIMUM OF 20'-0" & A MULTIPLE OF 5'-0". CHORD FIELD SPLICES SHALL BE MADE WITH COUPLINGS. CHORD SHOP SPLICE SHALL BE THE WELDED SPLICE SHOWN ABOVE.

TABLE

STRUCTURE	A	B	C	CHORDS		FRONT & REAR WEB	COUPLING PLATE "DT" & "T"	BOLT CIRCLE DIA. "D2"	NO. OF BOLTS IN COUPLING	CAMBER	COLUMN O.D. X THK.	TOWER WEBS	"L"	ELEV. "R"	ELEV. "P"	ELEV. "T"
				A	B											
S-67-319	26'-4"	27'-1"	5	5	5,563" x 0.500"	3" x 3" x 1/4"	11,563" x 1.150"	8.563"	10	1 3/4"	12.75" x 0.500"	3" x 3" x 3/8"	80'-8 1/4"	887.59'	888.34'	885.13'

TABLE

STRUCTURE	A	B	C	CHORDS		FRONT & REAR WEB	COUPLING PLATE "DT" & "T"	BOLT CIRCLE DIA. "D2"	NO. OF BOLTS IN COUPLING	CAMBER	COLUMN O.D. X THK.	TOWER WEBS	"L"	ELEV. "R"	ELEV. "P"	ELEV. "T"
				A	B											
S-67-319	26'-4"	27'-1"	5	5	5,563" x 0.500"	3" x 3" x 1/4"	11,563" x 1.150"	8.563"	10	1 3/4"	12.75" x 0.500"	3" x 3" x 3/8"	80'-8 1/4"	887.59'	888.34'	885.13'

SECTION A

TOP WEB

FRONT WEB

TRANSVERSE WEB

BOTTOM WEB

CHORD

REAR WEB

BOTTOM WEB

ELEVATION
(LOOKING UPSTATION)

BOX ENDS AT SUPPORTS & COUPLINGS

L 3" X 3" X 1/4"

THE GENERAL PATTERN SHOWN ABOVE IS TO BE MAINTAINED WHEN ASSEMBLING TRUSSES. NOTE DIRECTION OF DIAGONALS AT JOINTS.

END VIEW

5'-0" MAX.

APPROX. 5'-0" SPA.

APPROX. 5'-0" SPA.

7/8" TO 1'-0" COUPLING END

TOWER CONN. END

TOWER CONN. END

TRUSS ARRANGEMENT

FABRICATOR MAY MAKE TRUSSES ANY LENGTH KEEPING A SECTION A MINIMUM OF 20'-0" & A MULTIPLE OF 5'-0". CHORD FIELD SPLICES SHALL BE MADE WITH COUPLINGS. CHORD SHOP SPLICE SHALL BE THE WELDED SPLICE SHOWN ABOVE.

NOTES

DRAWINGS SHALL NOT BE SCALED.

STEEL COLUMN PIPE SHALL BE API SPEC. 5L GRADE X42 Fy = 42,000 P.S.I. **

ALL STEEL PIPE MEMBERS OF TRUSS SHALL BE API SPEC. 5L GRADE X42 Fy = 42,000 P.S.I. **

PLATES, BARS AND STRUCTURAL ANGLES SHALL BE ASTM A709 GRADE 36 Fy = 36,000 P.S.I.

ALL STRUCTURAL STEEL MEMBERS SHALL BE GALVANIZED.

ALL BOLTED CONNECTIONS SHALL BE MADE WITH 3/4" ϕ A325 BOLTS, GALVANIZED ASTM A193, CLASS C, AND MADE WITH DTI WASHERS.

WELDED CONNECTIONS CAN BE USED IN LIEU OF BOLTED CONNECTIONS, IF UNIT CAN BE GALVANIZED IN ONE PIECE.

STEEL ANCHOR BOLTS SHALL MEET THE REQUIREMENTS OF ASTM F1554 GRADE 55, Fy = 55,000 PSI

THE UPPER 12" OF ANCHOR BOLTS, NUTS AND WASHERS SHALL BE GALVANIZED IN ACCORDANCE WITH THE AASHTO SPECIFICATION AS STATED IN SECTION 641 OF THE WISDOT STANDARD SPECIFICATIONS.

WELD TEST AS PER AWS D11.

** ALTERNATE MATERIAL FOR COLUMN AND CHORD, LESS THAN 16" DIAMETER MAY BE ASTM 1500 GRADE B Fy = 42,000 P.S.I., GRADE C Fy = 46,000 P.S.I., OR ASTM A53 GRADE B Fy = 35,000 P.S.I.

SECTION B

1/2" ϕ STAINLESS STEEL BOLT AND NUTS, 2 REQUIRED PER WS X 3/4"

3/8" ϕ HOLE

WS X 3/4 ALUM. TO BE SUPPLIED WITH SIGN

SECTION A

TOP WEB

FRONT WEB

TRANSVERSE WEB

BOTTOM WEB

CHORD

REAR WEB

BOTTOM WEB

ELEVATION
(LOOKING UPSTATION)

BOX ENDS AT SUPPORTS & COUPLINGS

L 3" X 3" X 1/4"

THE GENERAL PATTERN SHOWN ABOVE IS TO BE MAINTAINED WHEN ASSEMBLING TRUSSES. NOTE DIRECTION OF DIAGONALS AT JOINTS.

END VIEW

5'-0" MAX.

APPROX. 5'-0" SPA.

APPROX. 5'-0" SPA.

7/8" TO 1'-0" COUPLING END

TOWER CONN. END

TOWER CONN. END

TRUSS ARRANGEMENT

FABRICATOR MAY MAKE TRUSSES ANY LENGTH KEEPING A SECTION A MINIMUM OF 20'-0" & A MULTIPLE OF 5'-0". CHORD FIELD SPLICES SHALL BE MADE WITH COUPLINGS. CHORD SHOP SPLICE SHALL BE THE WELDED SPLICE SHOWN ABOVE.

TABLE

STRUCTURE	A	B	C	CHORDS		FRONT & REAR WEB	COUPLING PLATE "DT" & "T"	BOLT CIRCLE DIA. "D2"	NO. OF BOLTS IN COUPLING	CAMBER	COLUMN O.D. X THK.	TOWER WEBS	"L"	ELEV. "R"	ELEV. "P"	ELEV. "T"
				A	B											
S-67-319	26'-4"	27'-1"	5	5	5,563" x 0.500"	3" x 3" x 1/4"	11,563" x 1.150"	8.563"	10	1 3/4"	12.75" x 0.500"	3" x 3" x 3/8"	80'-8 1/4"	887.59'	888.34'	885.13'

SECTION B

1/2" ϕ STAINLESS STEEL BOLT AND NUTS, 2 REQUIRED PER WS X 3/4"

3/8" ϕ HOLE

WS X 3/4 ALUM. TO BE SUPPLIED WITH SIGN

SECTION A

TOP WEB

FRONT WEB

TRANSVERSE WEB

BOTTOM WEB

CHORD

REAR WEB

BOTTOM WEB

ELEVATION
(LOOKING UPSTATION)

BOX ENDS AT SUPPORTS & COUPLINGS

L 3" X 3" X 1/4"

THE GENERAL PATTERN SHOWN ABOVE IS TO BE MAINTAINED WHEN ASSEMBLING TRUSSES. NOTE DIRECTION OF DIAGONALS AT JOINTS.

END VIEW

5'-0" MAX.

APPROX. 5'-0" SPA.

APPROX. 5'-0" SPA.

7/8" TO 1'-0" COUPLING END

TOWER CONN. END

TOWER CONN. END

TRUSS ARRANGEMENT

FABRICATOR MAY MAKE TRUSSES ANY LENGTH KEEPING A SECTION A MINIMUM OF 20'-0" & A MULTIPLE OF 5'-0". CHORD FIELD SPLICES SHALL BE MADE WITH COUPLINGS. CHORD SHOP SPLICE SHALL BE THE WELDED SPLICE SHOWN ABOVE.

TABLE

STRUCTURE	A	B	C	CHORDS		FRONT & REAR WEB	COUPLING PLATE "DT" & "T"	BOLT CIRCLE DIA. "D2"	NO. OF BOLTS IN COUPLING	CAMBER	COLUMN O.D. X THK.	TOWER WEBS	"L"	ELEV. "R"	ELEV. "P"	ELEV. "T"
				A	B											
S-67-319	26'-4"	27'-1"	5	5	5,563" x 0.500"	3" x 3" x 1/4"	11,563" x 1.150"	8.563"	10	1 3/4"	12.75" x 0.500"	3" x 3" x 3/8"	80'-8 1/4"	887.59'	888.34'	885.13'

SECTION B

1/2" ϕ STAINLESS STEEL BOLT AND NUTS, 2 REQUIRED PER WS X 3/4"

3/8" ϕ HOLE

WS X 3/4 ALUM. TO BE SUPPLIED WITH SIGN

SECTION A

TOP WEB

FRONT WEB

TRANSVERSE WEB

BOTTOM WEB

CHORD

REAR WEB

BOTTOM WEB

ELEVATION
(LOOKING UPSTATION)

BOX ENDS AT SUPPORTS & COUPLINGS

L 3" X 3" X 1/4"

THE GENERAL PATTERN SHOWN ABOVE IS TO BE MAINTAINED WHEN ASSEMBLING TRUSSES. NOTE DIRECTION OF DIAGONALS AT JOINTS.

END VIEW

5'-0" MAX.

APPROX. 5'-0" SPA.

APPROX. 5'-0" SPA.

7/8" TO 1'-0" COUPLING END

TOWER CONN. END

TOWER CONN. END

TRUSS ARRANGEMENT

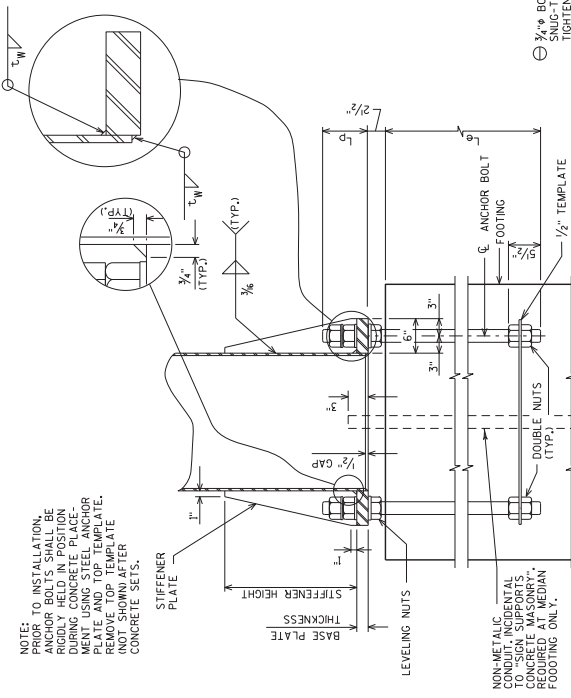
FABRICATOR MAY MAKE TRUSSES ANY LENGTH KEEPING A SECTION A MINIMUM OF 20'-0" & A MULTIPLE OF 5'-0". CHORD FIELD SPLICES SHALL BE MADE WITH COUPLINGS. CHORD SHOP SPLICE SHALL BE THE WELDED SPLICE SHOWN ABOVE.

Addendum No. 01
ID 2200-16-71
Added Sheet 713D
December 8, 2015

NO.	DATE	REVISION	BY

STATE OF WISCONSIN
DEPARTMENT OF TRANSPORTATION
STRUCTURES DESIGN SECTION
STRUCTURE S-67-319
DRAWN BY: [REDACTED]
CHECKED BY: [REDACTED]
PLANS [REDACTED] ETP
SHEET 4 OF 6
GALVANIZED STEEL
FULL-SPAN SIGN
TRUSS
713D

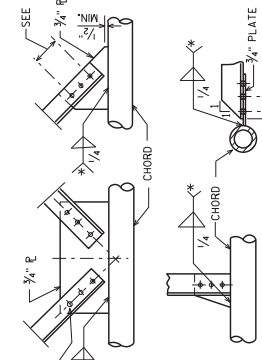
Addendum No. 01
ID 2200-16-71
Added Sheet 713E
December 8, 2015



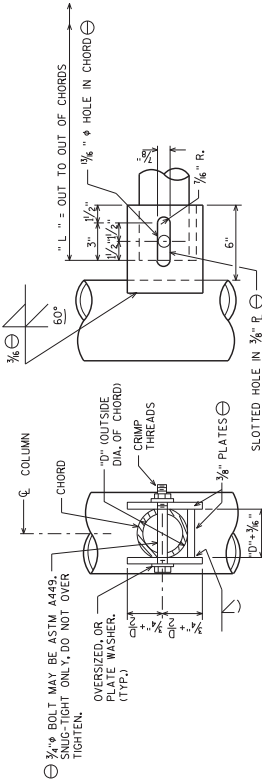
BASE PLATE DETAIL



TOWER CAP DETAIL



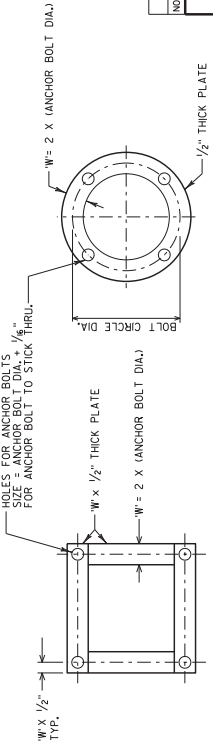
TYPICAL TRUSS CONNECTION DETAILS



TOWER CONNECTION DETAIL

TYPICAL WELDED ALTERNATE

* ANGLE	WELD LENGTH	NO. OF BOLTS
2 1/2" x 2 1/2" x 1/4"	10"	3
3" x 3" x 1/4"	13"	4
3" x 3" x 3/8"	16 1/2"	5
3" x 3" x 1/2"	19 1/2"	5
4" x 4" x 3/8"	22"	6
4" x 4" x 1/2"	26"	8
4" x 4" x 3/4"	30"	9
4" x 4" x 1/2"	34"	10



ANCHOR PLATE/TOP TEMPLATE

ALTERNATE ANCHOR PLATE/TOP TEMPLATE

BASE PLATE & UPRIGHT COLUMN DETAILS

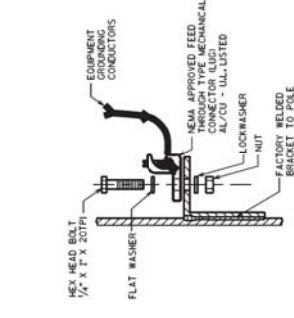
STRUCTURE	STEEL COLUMN O.D. X THK.	ANCHOR BOLTS SIZE	BASE PLATE THICKNESS (IN.)	STIFFENER PLATE THICKNESS (IN.)	STIFFENER PLATE HEIGHT (IN.)	t _{sp} (IN.)
S-67-319	12.75" x 0.500"	1 3/4", 3"-5", 5 1/2"	1 1/2"	1/4"	12"	1/4"

NO. DATE	REVISION	BY
STATE OF WISCONSIN DEPARTMENT OF TRANSPORTATION STRUCTURES DESIGN SECTION		
STRUCTURE S-67-319		
DRAWN BY	CHKD. ETP	PLANS
GALVANIZED STEEL FULL-SPAN SIGN		SHEET 5 OF 6
TRUSS DETAILS		713E

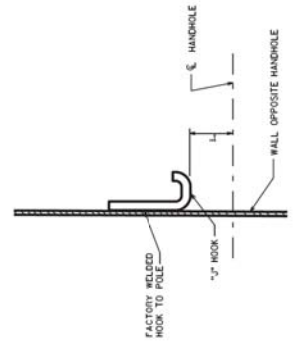
Addendum No. 01
 ID 2200-16-71
 Added Sheet 713F
 December 8, 2015

NO.	DATE	REVISION	BY
STATE OF WISCONSIN DEPARTMENT OF TRANSPORTATION STRUCTURES DESIGN SECTION			
STRUCTURE S-67-319			
DRAWN BY		PLANS	ETP
TKB		TKB	TKB
HANDHOLE DETAILS			SHEET 6 OF 6
			713F

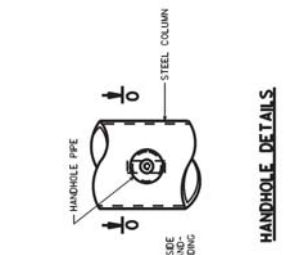
PLOT SCALE : 2.00000 ' / Ft.



GROUNDING LUG DETAIL
 NUT, BOLT AND WASHERS SHALL BE STAINLESS STEEL



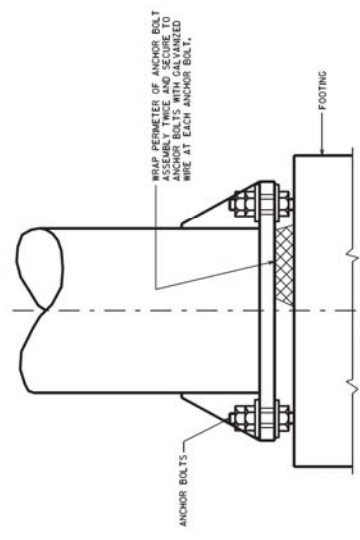
TYPICAL "J" HOOK LOCATION
 THE "J" HOOK SHALL BE FACTORY WELDED TO THE INSIDE OF ALL COLUMNS CONTAINING ELECTRICAL HANDHOLES. THE HOOK SHALL BE A HOOK OF THE TYPE SHOWN IN THE DRAWING. THE HOOK SHALL BE MOUNTED DIRECTLY OPPOSITE THE HANDHOLE AS SHOWN IN THE DRAWING.



SECTION 0-0
HANDHOLE DETAILS

HANDHOLE NOTES
 HANDHOLES SHALL BE LOCATED IN THE MEDIAN COLUMN OF THE SIGN BRIDGE STRUCTURE COLUMNS. WITH HANDHOLES SHALL BE NEAR THE ELECTRICAL SERVICE, THE ELECTRICAL SERVICE SHALL BE LOCATED NEAR THE TOP OF THE COLUMN WITH THE REGION TRAFFIC SECTION PRIOR TO FABRICATION OF THE SIGN BRIDGE COLUMNS AND MEMBERS.

COLUMN SIZE (OD) X THK.	HANDHOLE PIPE (OD) X MIN THK.
UP TO AND INCLUDING 36" X .375"	5.562" X .200"
GREATER THAN 36" X .375" TO AND INCLUDING 24" X .250"	6.625" X .252"



RODENT SCREEN
 ONLY REQD. WHEN ELECTRICAL DEVICES ARE INSTALLED