



Wisconsin Department of Transportation

January 5, 2016

Division of Transportation Systems Development

Bureau of Project Development
 4802 Sheboygan Avenue, Rm 601
 P O Box 7916
 Madison, WI 53707-7916

Telephone: (608) 266-1631
 Facsimile (FAX): (608) 266-8459

NOTICE TO ALL CONTRACTORS:

Proposal #23: 1170-00-74, WISC 2016 036
Wausau - Merrill
B-37-155, 158, 159
USH 51
Marathon County

Letting of January 12, 2016

This is Addendum No. 01, which provides for the following:

Special Provisions

Revised Special Provisions	
Article No.	Description
3	Prosecution and Progress

Schedule of Items

Revised Bid Item Quantities					
Bid Item	Item Description	Unit	Old Quantity	Revised Quantity	Proposal Total
646.0106	Pavement Marking Epoxy 4-Inch	LF	32,430	570	33,000
646.0881.S	Grooved Wet Reflective Tape 4-Inch	LF	3,590	-575	3,015

Plan Sheets

Revised Plan Sheets	
Plan Sheet	Plan Sheet Title (brief description of changes to sheet)
22	Pavement Markings – changed pavement markings north of Decator Drive from Grooved Wet Reflective Tape 4-Inch to Pavement Marking Epoxy 4-Inch
28	Traffic Control – Stage 1, deleted note
36	Traffic Control – Stage 2, added dimension
37	Traffic Control – Stage 2, revised taper dimension from 1,040' to 880', added note for buffer space
43	Traffic Control – Stage 3, added dimension
82	Miscellaneous Quantities – Revised pavement marking table

The responsibility for notifying potential subcontractors and suppliers of these changes remains with the prime contractor.

Sincerely,

Mike Coleman

Proposal Development Specialist
Proposal Management Section

ADDENDUM NO. 01

1170-00-74

January 5, 2016

Special Provisions

3. Prosecution and Progress

*Replace entire section titled **Stage 2 Completion** with the following:*

Stage 2 Completion Decator Drive

Complete construction operations on Northbound USH 51 (Stage 2) at Decator Drive to the stage necessary to reopen it to through traffic prior to 12:01 AM Friday, May 27, 2016. Do not reopen until completing the following work: re-deck inside and center lanes of structure B-37-155, approach work, reset beam guard, and pavement markings.

If the contractor fails to complete the work necessary to reopen Northbound USH 51 to through traffic prior to 12:01 AM Friday, May 27, 2016, the department will assess the contractor \$20,000 in interim liquidated damages for each calendar day that the roadway remains closed after 12:01 AM, Friday, May 27, 2016. An entire calendar day will be charged for any period of time within a calendar day that the road remains closed beyond 12:01 AM.

The department will not grant time extensions to the interim completion dates specified above for the following:

1. Severe weather as specified in standard spec 108.10.2.2.
2. Labor disputes that are not industry wide.
3. Delays in material deliveries.

If contract time expires prior to completing all work specified in the contract, additional liquidated damages will be affixed according to standard spec 108.11.

Schedule of Items

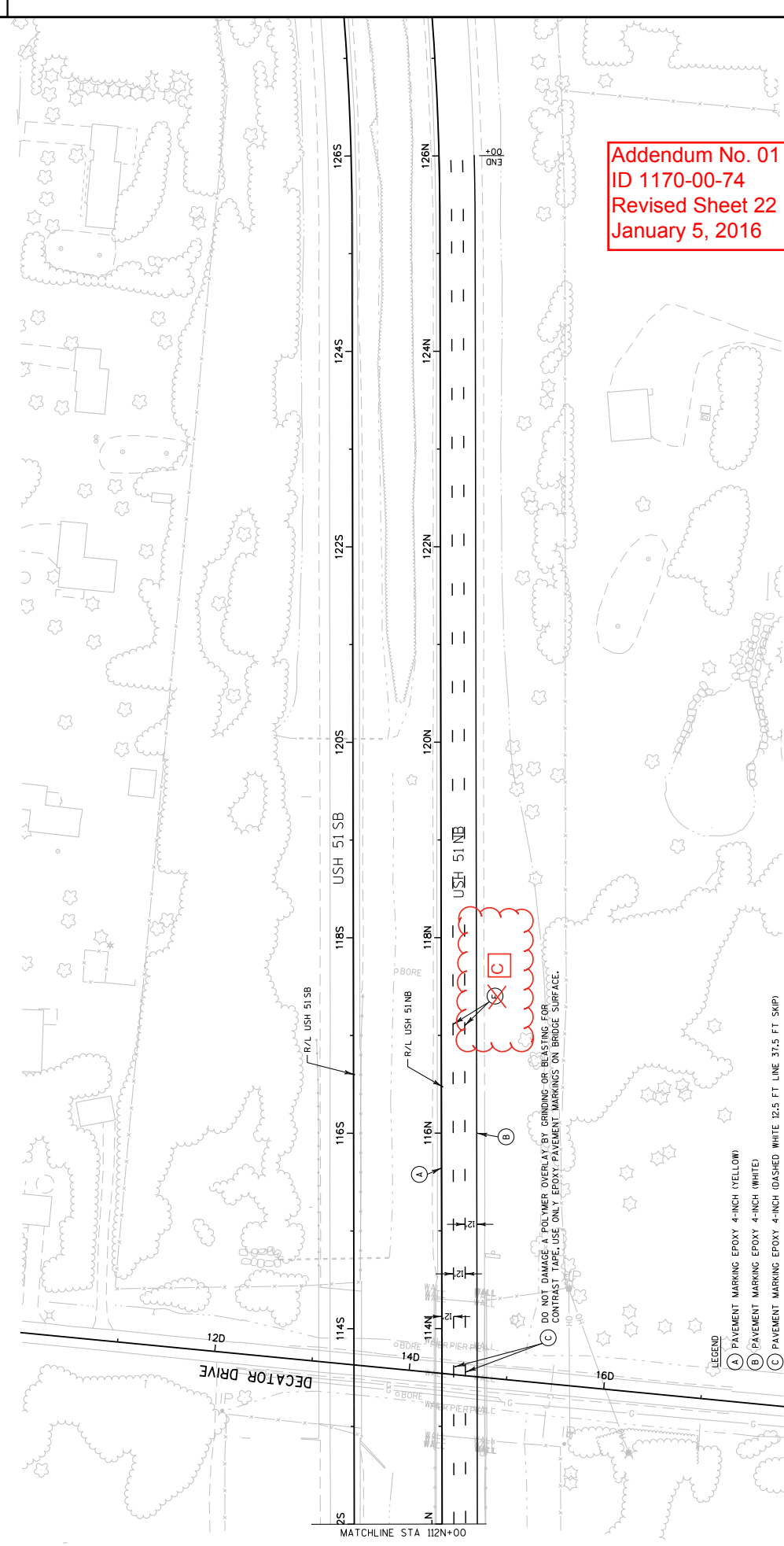
Attached, dated January 5, 2016, are the revised Schedule of Items Pages 12 and 13.

Plan Sheets

The following 8½ x 11-inch sheets are attached and made part of the plans for this proposal:

Revised: 22, 28, 36, 37, 43, and 82.

END OF ADDENDUM

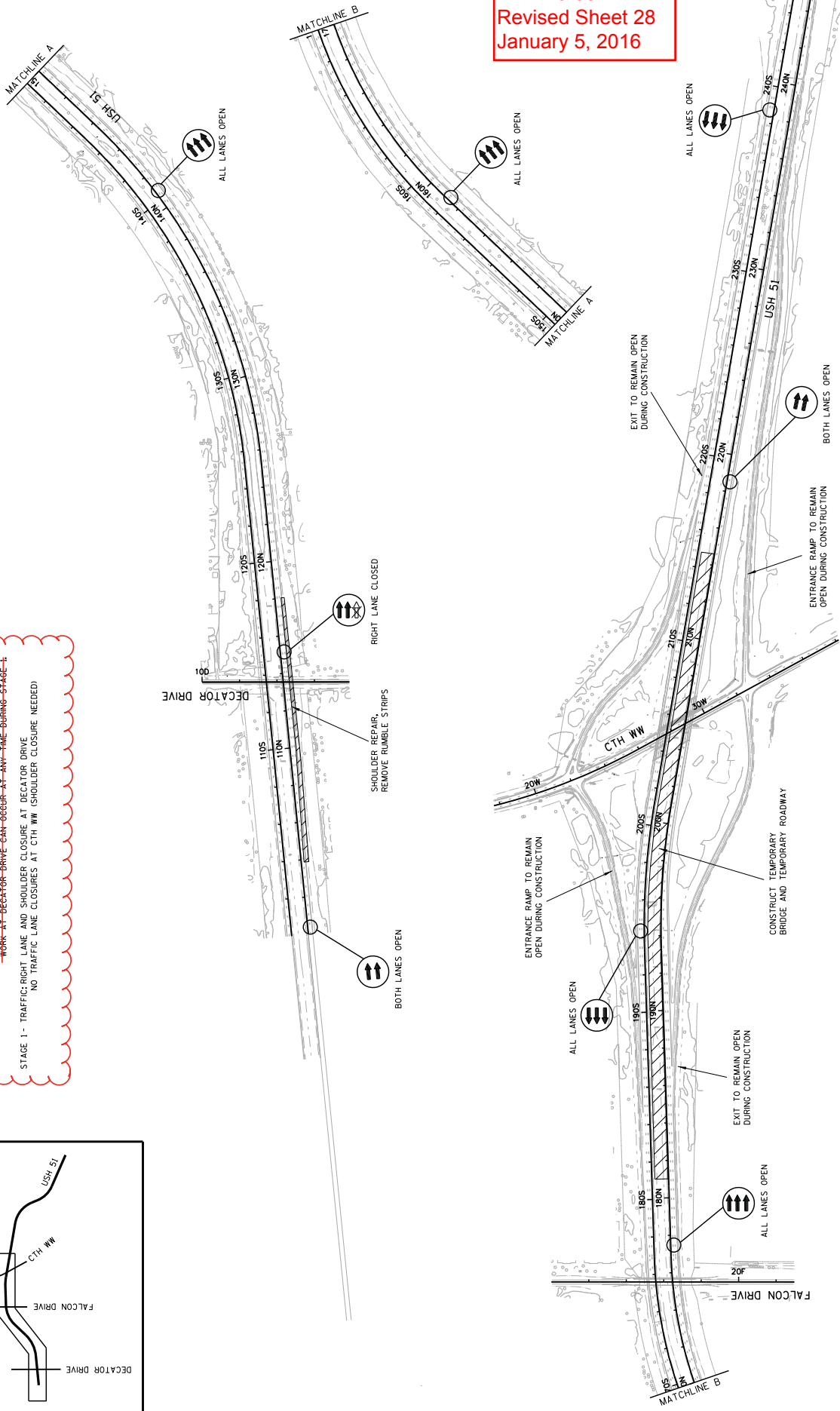
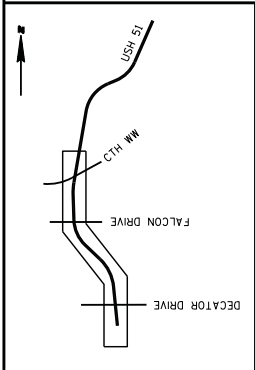


Addendum No. 01
 ID 1170-00-74
 Revised Sheet 22
 January 5, 2016

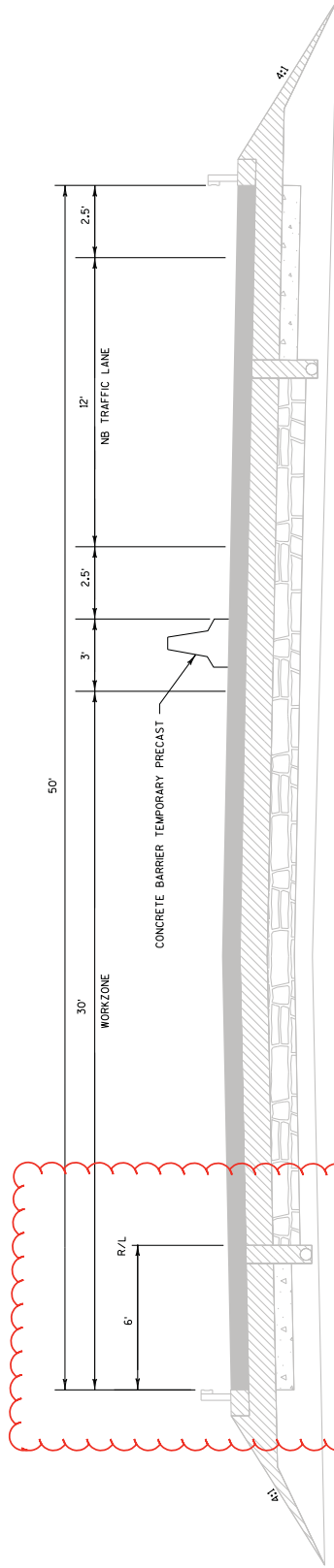
DO NOT DAMAGE A POLYMER OVERLAY BY GRINDING OR BLASTING FOR CONTRAST TAPE. USE ONLY EPOXY PAVEMENT MARKINGS ON BRIDGE SURFACE.

- LEGEND
- (A) PAVEMENT MARKING EPOXY 4-INCH (YELLOW)
 - (B) PAVEMENT MARKING EPOXY 4-INCH (WHITE)
 - (C) PAVEMENT MARKING EPOXY 4-INCH (DASHED WHITE 12.5 FT LINE 37.5 FT SKIP)
 - (D) PAVEMENT MARKING EPOXY 8-INCH (CHANNELIZING WHITE)
 - (E) PAVEMENT MARKING GROOVED WET REFLECTIVE CONTRAST TAPE 4-INCH (DASHED WHITE 12.5 FT LINE 37.5 FT SKIP)
 - (F) PAVEMENT MARKING GROOVED WET REFLECTIVE TAPE 4-INCH (DASHED WHITE 12.5 FT LINE 37.5 FT SKIP)

CONSTRUCTION STAGE 1
 STAGE 1 - CONSTRUCTION: SHOULDER REPAIR, REMOVE RUMBLE STRIPS AT DECATOR DRIVE, CONSTRUCT TEMPORARY BRIDGE AND ROADWAY AT CTH WW.
 - WORK AT DECATOR DRIVE CAN OCCUR AT ANY TIME DURING STAGE 1.
 STAGE 1 - TRAFFIC: RIGHT LANE AND SHOULDER CLOSURE AT DECATOR DRIVE.
 NO TRAFFIC LANE CLOSURES AT CTH WW (SHOULDER CLOSURE NEEDED)

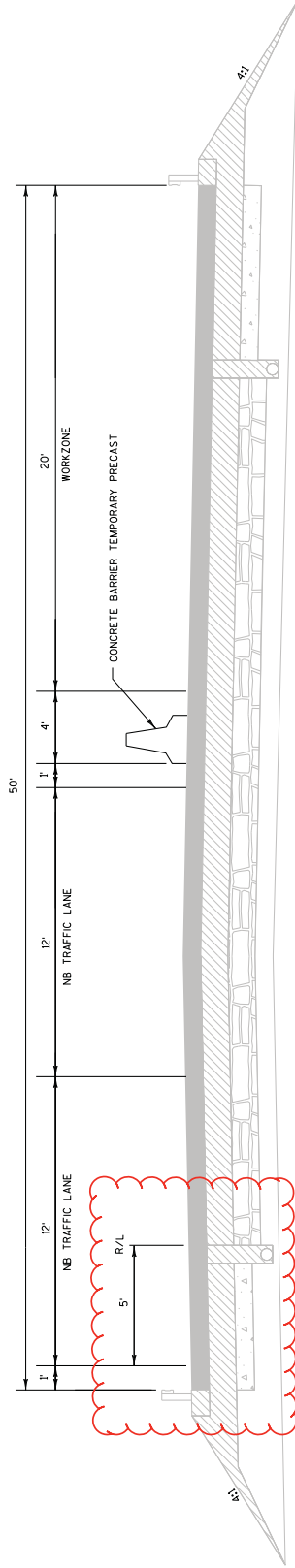


Addendum No. 01
ID 1170-00-74
Revised Sheet 28
January 5, 2016



CONSTRUCTION STAGE_2
 USH 51 NORTHBOUND
 B-37-155 APPROACHES
 STA 1028+00 TO STA 1034+00

Addendum No. 01
 ID 1170-00-74
 Revised Sheet 36
 January 5, 2016



CONSTRUCTION STAGE 3
 USH 51 NORTHBOUND
 B-37-155 APPROACHES
 STA 102N+00 TO STA 119N+00

Addendum No. 01
 ID 1170-00-74
 Revised Sheet 43
 January 5, 2016

TEMPORARY PAVEMENT MARKINGS

CATEGORY	ROADWAY	STAGE	646.0600 REMOVING PAVEMENT MARKINGS		647.0955 REMOVING ARROWS		649.0402 TEMPORARY PAVEMENT MARKING PAINT 4-INCH		649.0400 TEMPORARY PAVEMENT MARKING REMOVABLE TAPE 4-INCH		649.0801 TEMPORARY PAVEMENT MARKING REMOVABLE TAPE 8-INCH	
			LF	STA	EACH	WHITE	YELLOW	WHITE	WHITE	BLACK	WHITE	
0010	USH 51	1	--		--		--		--		--	
		2	2,300		--		4,350	8,350	3,240	4,400	900	650
		3	1,700		--		--	--	1,700	3,400	425	--
		4	1,440		--		4,450	5,250	--	1,950	--	1570
		5	--		--		--	--	--	--	--	--
		6A	2,480		--		--	--	4,700	4,400	--	--
		6B	1,970		1		--	--	4,700	4,900	--	--
TOTALS			9,890		1		22,400		34,715		2,220	

TRAFFIC CONTROL ITEMS

643.0100.01			
TRAFFIC CONTROL			
D 1170-00-74			
CATEGORY	STAGE	PROJECT	EACH
0010	1	1170-00-74	1
TOTALS			1

TRAFFIC CONTROL DETOUR 1170-00-74

643.2000			
EACH			
CATEGORY	LOCATION		
0010	CTH WW		1
			1

Addendum No. 01
ID 1170-00-74
Revised Sheet 82
January 5, 2016

PAVEMENT MARKING ITEMS

CATEGORY	STAGE	LOCATION	646.0106 EPOXY 4-INCH		646.0126 EPOXY 8-INCH		646.0841.S GROOVED WET		646.0881.S GROOVED WET		647.0166 ARROWS	
			YELLOW	WHITE	WHITE	WHITE	WHITE	WHITE	WHITE	WHITE	EPOXY	EPOXY
0010	3	USH 51 & DECATOR DR	2,430	2,975	--		425		425		675	--
	2	USH 51 & CTH WW	4,500	2,950	--		--		--		1,290	--
	3		4,500	4,625	--		--		--		1,000	--
	6B	CTH WW	1,430	1,300	195		--		--		325	--
		14W+52 - 21W+64	--	--	--		--		--		--	2
		19W+89 RT TURN LANE	--	--	--		--		--		--	--
		22W+57 - 32W+12	1,910	1,950	--		--		--		250	--
		33W+29 - 40W+44	1,420	1,430	155		--		--		150	--
TOTALS			33,000	32,456	350		425		425		3,596	2
											3,015	1

SCHEDULE OF ITEMS

REVISED:

CONTRACT:
20160112023PROJECT(S):
1170-00-74FEDERAL ID(S):
WISC 2016036

CONTRACTOR : _____

LINE NO	ITEM DESCRIPTION	APPROX. QUANTITY AND UNITS	UNIT PRICE		BID AMOUNT	
			DOLLARS	CTS	DOLLARS	CTS
1160	643.0910 Traffic Control Covering Signs Type I	2.000 EACH
1170	643.0920 Traffic Control Covering Signs Type II	4.000 EACH
1180	643.1050 Traffic Control Signs PCMS	460.000 DAY
1190	643.2000 Traffic Control Detour (project) 01. 1170-00-74	1.000 EACH
1200	643.3000 Traffic Control Detour Signs	4,366.000 DAY
1210	645.0120 Geotextile Fabric Type HR	28.000 SY
1220	646.0106 Pavement Marking Epoxy 4-Inch	33,000.000 LF
1230	646.0126 Pavement Marking Epoxy 8-Inch	350.000 LF
1240	646.0600 Removing Pavement Markings	9,890.000 LF
1250	646.0841.S Pavement Marking Grooved Wet Reflective Contrast Tape 4-Inch	425.000 LF

SCHEDULE OF ITEMS

REVISED:

CONTRACT:
20160112023PROJECT(S):
1170-00-74FEDERAL ID(S):
WISC 2016036

CONTRACTOR : _____

LINE NO	ITEM DESCRIPTION	APPROX. QUANTITY AND UNITS	UNIT PRICE		BID AMOUNT	
			DOLLARS	CTS	DOLLARS	CTS
1260	646.0881.S Pavement Marking Grooved Wet Reflective Tape 4-Inch	3,015.000 LF
1270	647.0166 Pavement Marking Arrows Epoxy Type 2	2.000 EACH
1280	647.0356 Pavement Marking Words Epoxy	1.000 EACH
1290	647.0955 Removing Pavement Markings Arrows	1.000 EACH
1300	649.0400 Temporary Pavement Marking Removable Tape 4-Inch	34,715.000 LF
1310	649.0402 Temporary Pavement Marking Paint 4-Inch	22,400.000 LF
1320	649.0801 Temporary Pavement Marking Removable Tape 8-Inch	2,220.000 LF
1330	650.4000 Construction Staking Storm Sewer	16.000 EACH
1340	650.4500 Construction Staking Subgrade	7,143.000 LF
1350	650.5000 Construction Staking Base	11,544.000 LF