



# Wisconsin Department of Transportation

January 26, 2016

## Division of Transportation Systems Development

Bureau of Project Development  
4802 Sheboygan Avenue, Rm 601  
P O Box 7916  
Madison, WI 53707-7916

Telephone: (608) 266-1631  
Facsimile (FAX): (608) 266-8459

### NOTICE TO ALL CONTRACTORS:

**Proposal #03: 1007-10-73**  
**Illinois State Line – Madison**  
**SB Bridges/B-13-0707 B-13-0710**  
**IH 39**  
**Dane County**

**1007-10-79**  
**Illinois State Line – Madison**  
**Maple Grove Rd to East Church Rd**  
**IH 39**  
**Dane County**

### Letting of February 9, 2016

This is Addendum No. 1, which provides for the following:

#### Special Provisions

Revised Special Provisions	
Article No.	Description
32.	Concrete Pavements
54.	High Performance Concrete (HPC) Masonry Structures, Item SPV.0035.701.
58.	Traffic Control Barricades Type III with Sign, Permanent, Item SPV.0060.103.

Added Special Provisions	
Article No.	Description
75.	Aggregate Quality Testing for Concrete Pavement and HPC Structure Mixes.

## Plan Sheets

Revised Plan Sheets	
Plan Sheet	Plan Sheet Title (brief description of changes to sheet)
33	Construction Details (revised notes for Traffic Control Barricades Type III with Sign, Permanent)

The responsibility for notifying potential subcontractors and suppliers of these changes remains with the prime contractor.

Sincerely,

*Mike Coleman*

Proposal Development Specialist  
Proposal Management Section

**ADDENDUM NO. 01**  
**1007-10-73/1007-10-79**  
**January 26, 2016**

**Special Provisions**

**32. Concrete Pavements.**

*Replace entire article language with the following:*

This special provision describes specialized material requirements for aggregates used in Concrete Pavements. Conform to standard specs 415 and 501, as modified in this special provision. Conform to standard spec 715 for QMP Concrete Pavement and Structures.

*Replace 501.2.5.4.1 with the following:*

**501.2.5.4.1 General**

- (1) Provide coarse aggregates from a department-approved source as specified under 106.3.4.2.
- (2) Use clean, hard, durable crushed gravel or crushed limestone free of an excess of thin or elongated pieces, frozen lumps, vegetation, deleterious substances, or adherent coatings considered injurious.
- (3) Use virgin aggregates only.

*Replace the first paragraph of 501.2.5.4.2 with the following:*

- (1) The amount of deleterious substances must not exceed the following percentages:

DELETERIOUS SUBSTANCE	PERCENT BY WEIGHT
Shale.....	1.0
Coal .....	1.0
Clay lumps.....	0.3
Soft fragments .....	5.0
Any combination of above .....	5.0
Thin or elongated pieces based on a 3:1 ratio .....	15.0
Materials passing the No. 200 sieve .....	1.5
Chert <sup>[1]</sup> .....	2.0

<sup>[1]</sup>Material classified lithologically as chert and having a bulk specific gravity (saturated surface-dry basis) of less than 2.45. Determine the percentage of chert by dividing the weight of chert in the sample retained on a 3/8-inch sieve by the weight of the total sample.

*Replace the first paragraph of 501.2.5.4.3 with the following:*

- (1) The percent wear shall not exceed 40, the weighted soundness loss shall not exceed 9 percent, and the weighted freeze-thaw average loss shall not exceed 12 percent.

**54. High Performance Concrete (HPC) Masonry Structures, Item SPV.0035.701.**

*Replace entire section titled 501.2.5.4.1 General with the following:*

**501.2.5.4.1 General**

*Replace the entire text with the following:*

Provide coarse aggregates from a department-approved source as specified under 106.3.4.2.

Use clean, hard, durable crushed limestone with 100% fractured surfaces and free of an excess of thin or elongated pieces, frozen lumps, vegetation, deleterious substances or adherent coatings considered injurious.

Use virgin aggregates only.

*Replace entire section titled 501.2.5.4.3 Physical Properties with the following:*

**501.2.5.4.3 Physical Properties**

*Replace paragraph one with the following:*

The percent wear shall not exceed 35, the weighted soundness loss shall not exceed 6 percent, and the weighted freeze-thaw average loss shall not exceed 12 percent.

**58. Traffic Control Barricades Type III with Sign, Permanent, Item SPV.0060.103.**

*Replace entire section titled C Construction with the following:*

**C Construction**

Attach each sign prior to delivery to the project as shown in the plan and in accordance with standard spec 643. Provide 70% of the barricades with the rail stripes and signs set up for barricades placed on the left side of the roadway and provide the remaining 30% of the barricades with the rail stripes and signs set up for the barricades placed on the right side of the roadway.

Notify Shaun Olson, Dane County, at (608) 575-2243 at least 14 days prior to delivery of the material to a location near the project site as determined by the engineer. Deliver base supports and tires at the same time the pre-assembled barricades are delivered. Dane County will be responsible for the installation of the barricades upon completion of the project.

**75. Aggregate Quality Testing for Concrete Pavement and HPC Structure Mixes.**

**A Description**

- (1) This provision describes additional requirements for testing the quality of coarse aggregates being used in concrete mixes for pavements and HPC structures.
- (2) Conform to the standard specifications and high-performance concrete provisions contained within the contract, as modified in this provision.

**B Materials**

**B.1 Personnel**

- (1) Have personnel certified under the department's highway technician certification program (HTCP) perform sampling, testing, and documentation.

**B.2 Laboratory**

- (1) Perform testing at a department-qualified laboratory. Obtain information on the Wisconsin laboratory qualification program from:  
 Materials Management Section  
 3502 Kinsman Blvd.  
 Madison, Wisconsin 53704  
 Telephone: 608-246-5388  
<http://wisconsin.gov/Pages/doing-bus/eng-consultants/cnslt-rsrcs/tools/appr-prod/qual-labs.aspx>

**B.3 Equipment**

- (1) Furnish the necessary equipment and supplies for performing quality control testing. The engineer may inspect the measuring and testing devices to confirm both calibration and condition. Calibrate all testing equipment according to the CMM and maintain a calibration record at the laboratory.

**B.4 Records**

- (1) Document all observations, inspection records, and test results. Submit testing records to the engineer.

**B.5 Contractor Testing**

- (1) Perform all quality control tests necessary to control the production processes applicable to this special provision. Use the test methods identified below, or other methods the engineer approves, to perform the following tests:

LA Wear (100 and 500 revolutions).....	AASHTO T 96
Sodium Sulfate Soundness (R-4, 5 cycles).....	AASHTO T 104
Freeze-Thaw Soundness .....	AASHTO T 103
Chert <sup>[1]</sup> .....	

<sup>[1]</sup>Material classified lithologically as chert and having a bulk specific gravity (saturated surface-dry basis) of less than 2.45. Determine the percentage of chert by dividing the weight of chert in the sample retained on the 3/8-inch sieve by the weight of the total sample.

- (2) The department may periodically observe contractor sampling and testing, and direct additional contractor sampling and testing for department evaluation. Ensure that all test results are available for the engineer's review at any time during normal working hours.
- (3) In addition to the requirements of standard spec 106.3.4.2.2, perform tests for LA wear, sodium sulfate soundness, freeze-thaw soundness and chert at least once per calendar year when producing coarse aggregates for use in concrete pavement or HPC structure concrete mixes.
- (4) Randomly test the percentage of chert at least once per 10,000 tons during production of coarse aggregates to be used in concrete pavement and HPC structure mixes or at least once per 10,000 cubic yards during placement of concrete pavement.

**B.6 Department Testing**

- (1) The department will have a HTCP certified technician, or ACT working under a certified technician, perform verification testing. The department will sample randomly at locations independent of the contractor's QC work. In all cases, the department will conduct the verification tests with separate personnel and equipment from the contractor's QC tests. The department will perform verification testing of chert at a frequency of 10 percent of the random quality control tests or a minimum of once per project, or at greater frequency if determined to be necessary by the engineer.

**C (Vacant)**

**D (Vacant)**

**E Payment**

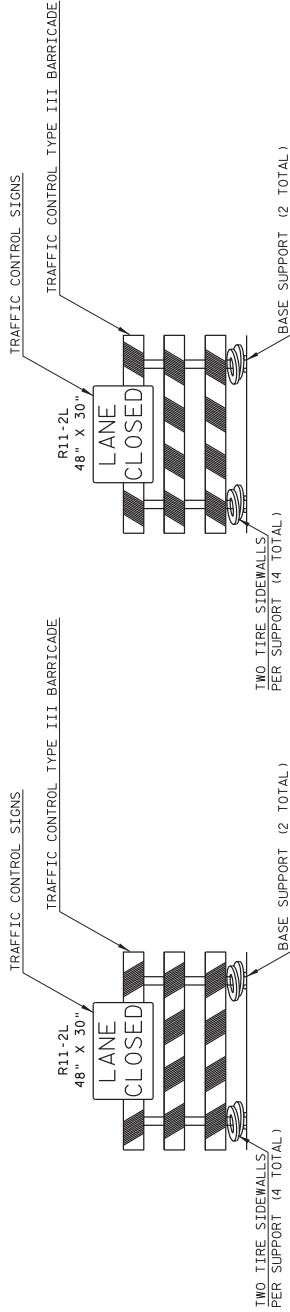
- (1) Costs for all sampling, testing, and documentation required under this special provision are incidental to the work. If the contractor fails to perform the work required under this special provision, the department may reduce the contractor's pay.

**Plan Sheets**

The following 8½ x 11-inch sheets are attached and made part of the plans for this proposal:

Revised: 33

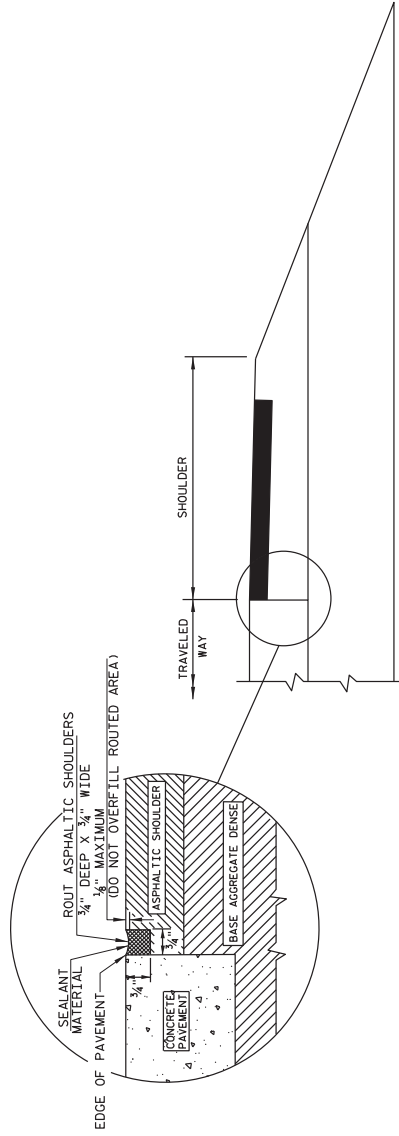
END OF ADDENDUM



**TRAFFIC CONTROL BARRICADES TYPE III WITH SIGN, PERMANENT**

ALL THE FOLLOWING ITEMS PAID FOR AS TRAFFIC CONTROL BARRICADES TYPE III WITH SIGN, PERMANENT

- TRAFFIC CONTROL SIGNS R11-2L "LANE CLOSED" - ONE PER BARRICADE
- TRAFFIC CONTROL TYPE III BARRICADE - INCLUDES TWO BASE SUPPORTS PER BARRICADE
- TIRE SIDEWALLS - FOUR PER BARRICADE



ROUT AND SEAL DETAIL  
SEE TYPICAL FINISHED SECTIONS FOR LOCATIONS

Addendum No. 01  
ID 1007-10-73  
Revised Sheet 33  
January 26, 2016