



Wisconsin Department of Transportation

March 2, 2016

Division of Transportation Systems Development

Bureau of Project Development
 4802 Sheboygan Avenue, Rm 601
 P O Box 7916
 Madison, WI 53707-7916

Telephone: (608) 266-1631
 Facsimile (FAX): (608) 266-8459

NOTICE TO ALL CONTRACTORS:

Proposal #22: 6498-05-71, WISC 2016 064
C Kaukauna, Island St
Fox River Bridge & Approaches
Local Street
Outagamie County

Letting of March 8, 2016

This is Addendum No. 02, which provides for the following:

Schedule of Items

Added Bid Item Quantities					
Bid Item	Item Description	Unit	Old Quantity	Revised Quantity	Proposal Total
415.0080	Concrete Pavement 8-Inch	SY	865	-145	720

Added Bid Item Quantities					
Bid Item	Item Description	Unit	Old Quantity	Revised Quantity	Proposal Total
415.0410	Concrete Pavement Approach Slab	SY	0	145	145

Plan Sheets

Revised Plan Sheets	
Plan Sheet	Plan Sheet Title (brief description of changes to sheet)
4	Typical Details – Add (Doweled) notation to the Concrete Pavement 8-Inch
10	Pavement Grades, Curb Ramps and Sidewalk Offsets – Concrete Pavement Approach Slabs shown and labeled
15	Misc. Quantities – Added quantity for Concrete Pavement Approach Slab and revised quantity for Concrete Pavement 8-Inch.
23	Plan and Profile: Island St. - Concrete Pavement Approach Slabs shown

Added Plan Sheets	
Plan Sheet	Plan Sheet Title (brief description of changes to sheet)
41A	SDD – SDD Concrete Pavement Approach Slab

Schedule of Items

Attached, dated March 2, 2016, are the revised Schedule of Items Pages 2 and 11.

Plan Sheets

The following 8½ x 11-inch sheets are attached and made part of the plans for this proposal:

Revised: 4, 10, 18, and 26.

Added: 41A

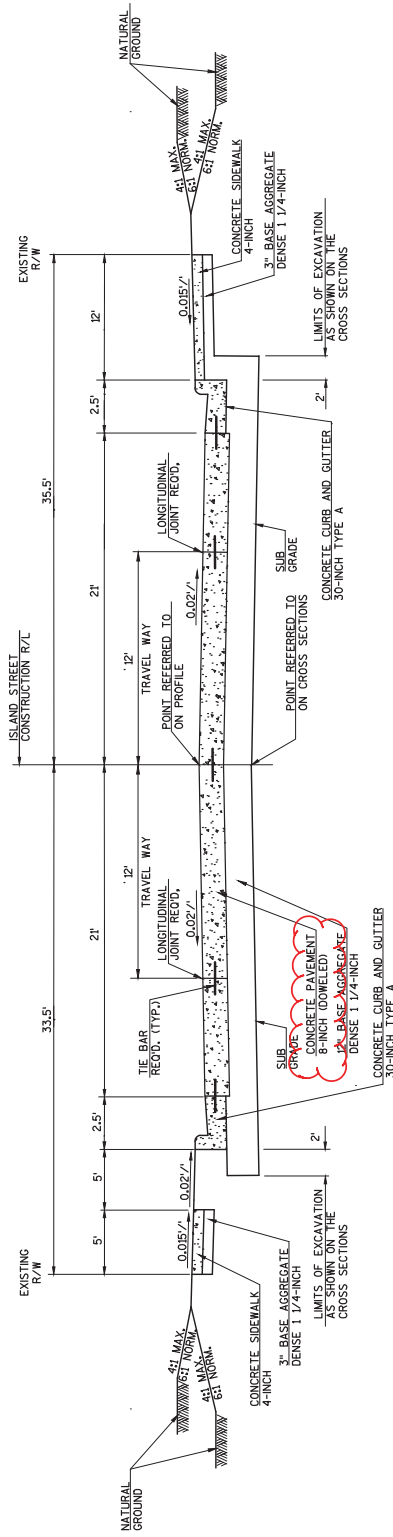
The responsibility for notifying potential subcontractors and suppliers of these changes remains with the prime contractor.

Sincerely,

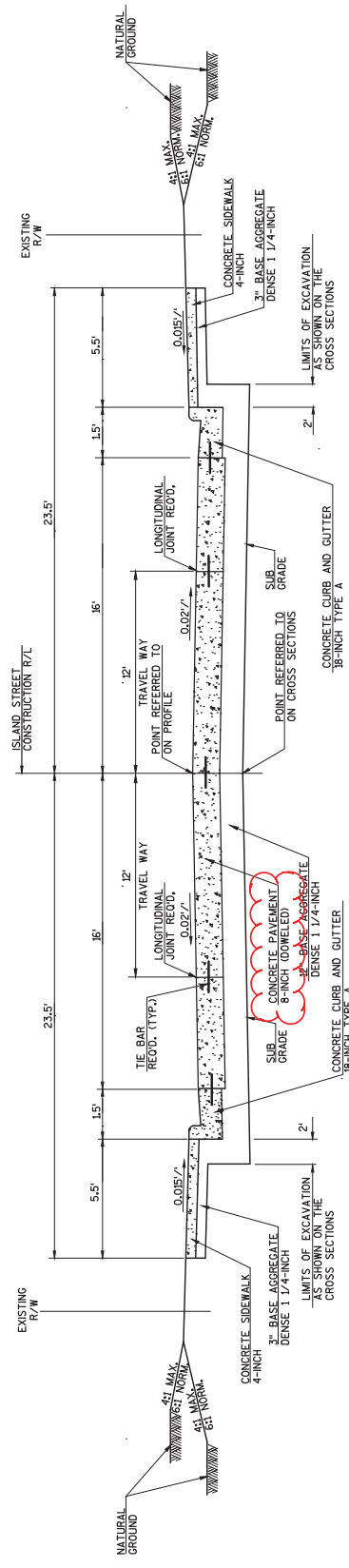
Mike Coleman

Proposal Development Specialist
 Proposal Management Section

END OF ADDENDUM

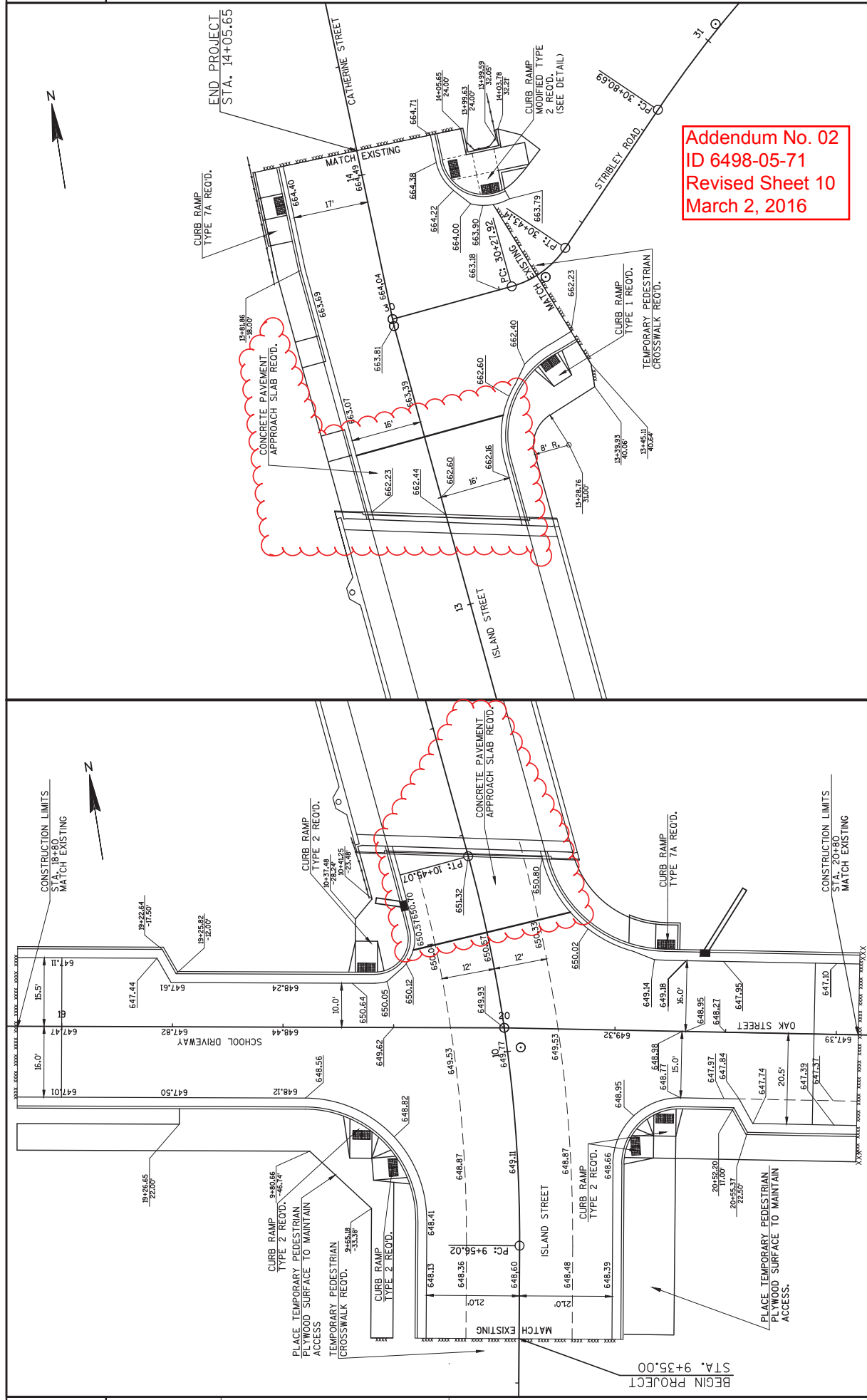


TYPICAL FINISHED SECTION FOR ISLAND STREET
STA. 9+35.00 - STA. 10+05.41



TYPICAL FINISHED SECTION FOR ISLAND STREET
STA. 10+05.41 - SOUTH BRIDGE DECK
NORTH BRIDGE DECK - STA. 14+05.65

Addendum No. 02
ID 6498-05-71
Revised Sheet 4
March 2, 2016



Addendum No. 02
 ID 6498-05-71
 Revised Sheet 10
 March 2, 2016

PROJECT NO: 6498-05-71	COUNTY: OUTAGAMIE	SHEET 10
PAVEMENT GRADES, CURB RAMPS AND SIDEWALK OFFSETS		
PLOT NAME : WISDOT/CADD SHEET 42		
PLOT DATE : 3.1.2016 7:11 AM		
PLOT BY :		
FILE NAME : N:\CSD\42073700 ISLAND ST BRIDGE\SHEETS\PLAN\021201.PD.DWG		
LAYOUT NAME - 022001.LEC		

BASE AGGREGATE DENSE AND WATER

STATION	TO	STATION	LOCATION	305.0120 1-1/4-INCH TON	624.0100 WATER MGAL
9+35	-	10+48	ISLAND ST	370	6
13+17	-	14+06	ISLAND ST	330	5
18+90	-	19+80	OAK ST	293	5
5+96	-	20+18	OAK ST	237	4
TOTALS				1,230	20

CONCRETE CURB AND GUTTER

STATION	TO	STATION	LOCATION	601.0405 18-INCH TYPE A LF	601.0411 30-INCH TYPE D LF
9+35	-	9+83	ISLAND ST, RT	52	-
9+35	-	9+83	ISLAND ST, LT	49	-
10+17	-	10+42	ISLAND ST, RT	33	-
10+23	-	10+52	ISLAND ST, LT	29	-
13+14	-	13+44	ISLAND ST, RT	32	-
13+24	-	14+06	ISLAND ST, LT	82	-
13+92	-	14+06	ISLAND ST, RT	14	-
18+90	-	19+75	OAK ST, RT	77	10
18+90	-	19+75	OAK ST, LT	81	10
20+29	-	20+80	OAK ST, LT	42	10
20+30	-	20+80	OAK ST, RT	45	10
30+22	-	30+42	STRIBLEY RD/THLWANY RD, LT	16	-
30+23	-	30+34	STRIBLEY RD/THLWANY RD, RT	13	-
TOTALS				190	40

CONCRETE CURB PEDESTRIAN

STATION	TO	STATION	LOCATION	601.0600 LF
20+35	-	20+35	OAK ST, LT	18
14+00	-	14+00	ISLAND ST, LT	17
14+00	-	14+00	ISLAND ST, RT	30
TOTAL				65

ASPHALTIC PAVEMENT

STATION	TO	STATION	LOCATION	455.0605 TACK GAL	465.0105 ASPHALTIC SURFACE TON
18+90	-	19+00	OAK ST	2	8
20+70	-	20+80	OAK ST	2	12
30+30	-	30+40	STRIBLEY RD	-	1
TOTALS				4	21

SIDEWALK

CATEGORY	STATION	TO	STATION	LOCATION	416.0160 DRIVEWAY 6-INCH SY	602.0405 SIDEWALK 4-INCH SF	SPV.0165.01 SIDEWALK 4-INCH SF	602.0515 CURB RAMP DETECTABLE WARNING FIELD NATURAL PA TINA SF
0010	9+35	-	9+73	ISLAND ST, LT	-	-	-	-
	9+36	-	9+75	ISLAND ST, RT	-	187	-	-
	9+73	-	9+89	ISLAND ST, LT	-	-	455	-
	9+75	-	9+84	ISLAND ST, RT	-	102	-	20
	10+24	-	10+54	ISLAND ST, LT	-	202	-	20
	10+24	-	10+31	ISLAND ST, LT	-	46	-	10
	13+12	-	13+51	ISLAND ST, RT	-	297	-	-
	13+25	-	13+40	ISLAND ST, LT	-	70	-	-
	13+42	-	13+50	ISLAND ST, RT	-	35	-	10
	13+40	-	13+67	ISLAND ST, LT	16	-	-	-
	13+67	-	13+83	ISLAND ST, LT	-	82	-	-
	13+90	-	13+85	ISLAND ST, RT	-	23	-	10
	13+95	-	14+00	ISLAND ST, RT	-	31	-	-
	13+90	-	14+06	ISLAND ST, RT	-	87	-	-
	13+83	-	14+00	ISLAND ST, LT	-	85	-	10
	14+00	-	14+06	ISLAND ST, LT	-	30	-	-
	18+80	-	19+70	OAK ST, RT	-	650	-	-
	20+09	-	20+28	OAK ST, LT	-	134	-	-
	20+28	-	20+39	OAK ST, LT	-	61	-	10
	20+34	-	20+74	OAK ST, RT	-	300	-	-
	SUBTOTAL				16	2,504	455	90
0030	20+74	-	20+80	OAK ST, RT	-	31	-	-
SUBTOTAL				-	-	31	-	-
TOTALS				16	2,535	455	90	

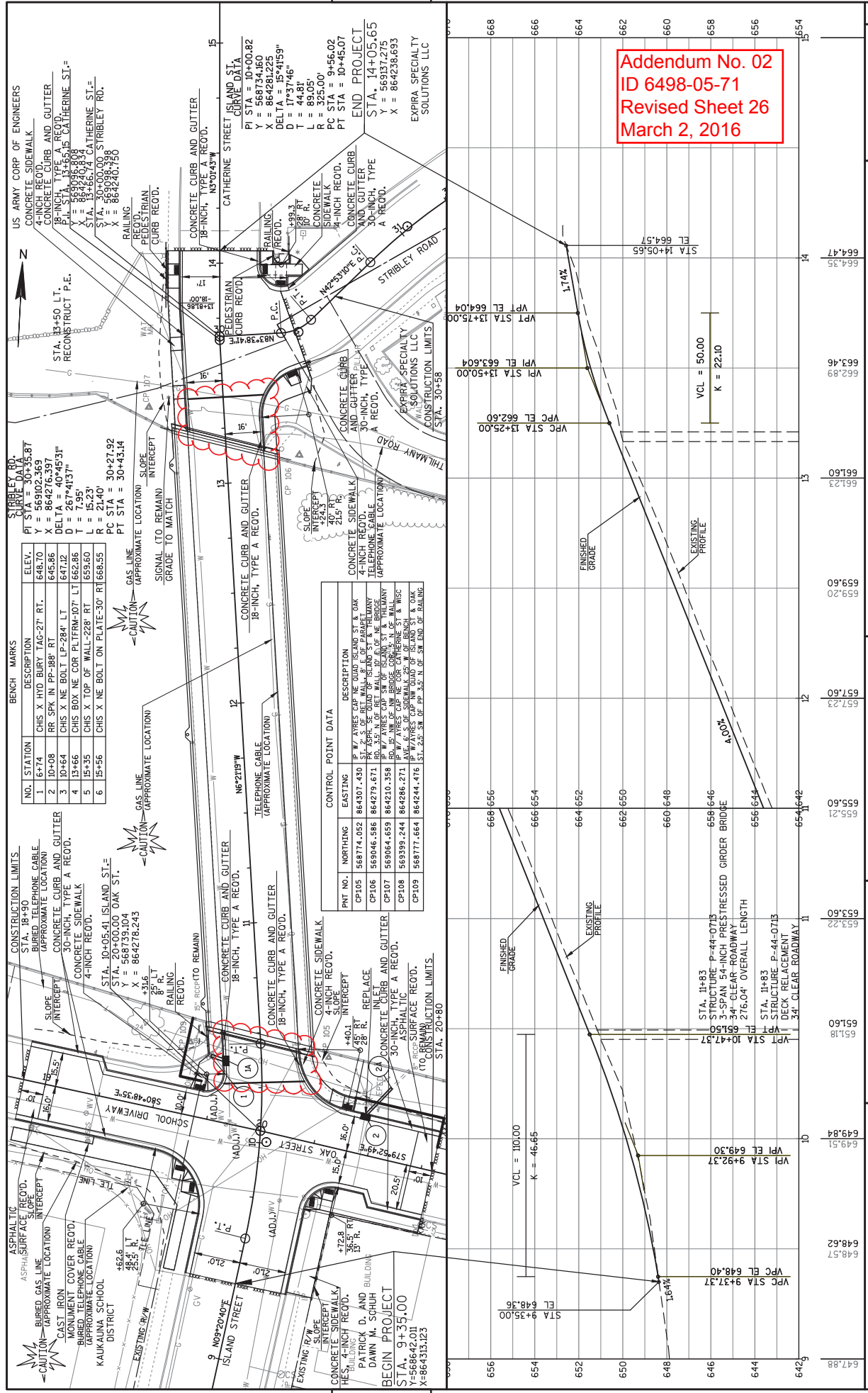
NOTE: SIDEWALK HES 4-INCH IS FOR ACCESS TO JOURNY BAR AND GRILL ENTRANCE.

CONCRETE PAVEMENT

STATION	TO	STATION	LOCATION	415.0060 CONCRETE PAVEMENT 6-INCH SY	415.0410 CONCRETE PAVEMENT APPROACH SLAB SY	416.0620 DRILLED DOWEL BARS EACH
9+35	-	10+27	ISLAND ST	400	-	30
10+27	-	10+48	-	-	72	-
13+17	-	13+39	-	-	73	-
13+39	-	14+06	ISLAND ST	320	-	24
18+90	-	19+80	OAK ST	89	-	-
20+18	-	20+80	OAK ST	71	-	-
TOTALS				160	720	54

ALL ITEMS ARE CATEGORY 0010 UNLESS OTHERWISE STATED

Addendum No. 02
 ID 6498-05-71
 Revised Sheet 18
 March 2, 2016



Addendum No. 02
 ID 6498-05-71
 Revised Sheet 26
 March 2, 2016

BENCH MARKS

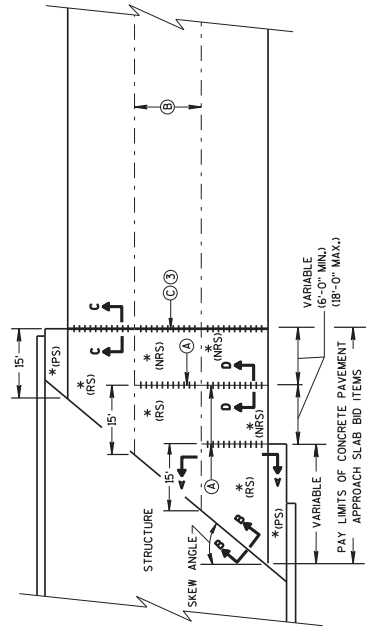
NO.	STATION	DESCRIPTION	ELEV.
1	6+74	CHS X MID BURY TAG-27 RT.	648.70
2	10+08	RR SPK IN PP-188' RT	645.86
3	10+64	CHS X NE BOLT LP-284' LT	647.32
4	13+66	CHS BOX NE COR PLTFRM-107' LT	662.86
5	15+35	CHS X TOP OF WALL-228' RT	659.60
6	15+56	CHS X NE BOLT ON PLATE-30' RT	668.55

CONTROL POINT DATA

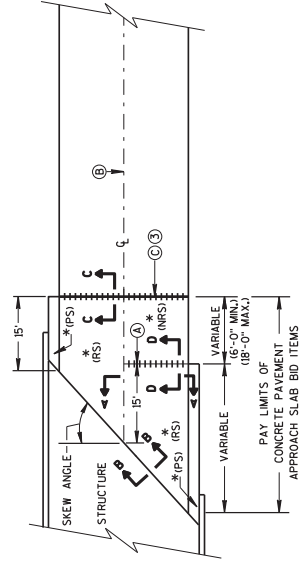
PNT NO.	NORTHING	EASTING	DESCRIPTION
CP105	568774.052	864207.430	W/ W/ AREAS CAPTESION W/INS ST E OAK 4-INCH REOD. PARAPET
CP106	568046.586	864279.671	EX. 25' S. OF RET. WALL B. E. OF PARAPET
CP107	568064.659	864210.358	W/ W/ AREAS CAP SW OF ISLAND ST & THILMANY
CP108	568399.244	864286.271	W/ W/ AREAS CAP SW OF ISLAND ST & THILMANY
CP109	568777.664	864244.476	ST. 25' SW OF PL. 33' N. OF SW END OF RAILING

STRIBLEY RD. CURVE DATA

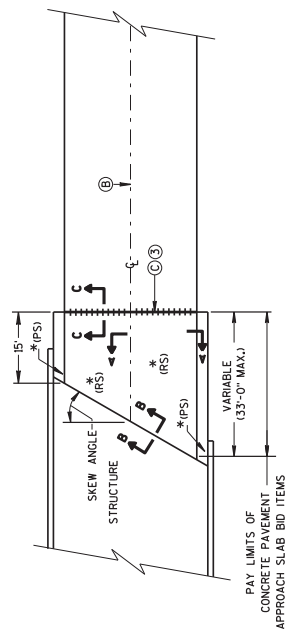
PI STA	= 10+00.82
Y	= 568734.160
X	= 864281.225
DELTA	= 15+41.59"
D	= 17+37.46"
T	= 46.81'
R	= 325.00'
PC STA	= 9+56.02
PT STA	= 10+45.07



**SKEWED APPROACH
(PAVEMENT MORE THAN 2 LANES)**



**SKEWS > 20°
(PAVEMENT WIDTH ≤ 30')**



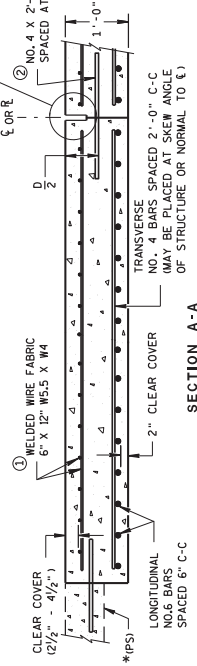
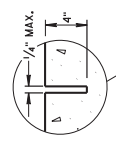
**APPROACH SLAB AND ADJACENT PAVEMENT
(PAVEMENT WIDTH ≤ 30')
SKEWS ≤ 20°**

- *(RS) = REINFORCED CONCRETE SLAB
- *(PS) = PAVED CONCRETE SHOULDER OR CONCRETE DRAINAGE SLAB (SEE DETAILS ELSEWHERE IN THE PLAN)
- *(NRS) = NON-REINFORCED CONCRETE SLAB
- ***STANDARD DOWEL BAR DIAMETER (SEE SDD 15C11 & SDD 15C13)

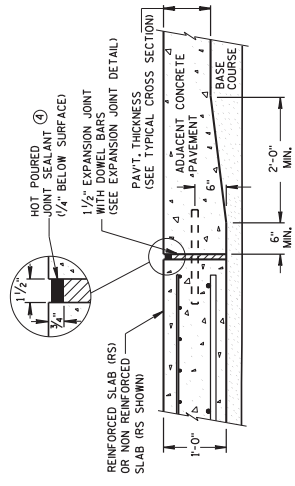
GENERAL NOTES

- 1 THE CONTRACTOR MAY USE NO. 6 BARS IN THE APPROACH SLAB FOR SKEWED STRUCTURES ONLY. STAGGER SPICES WITH A MAXIMUM OF ONE SPICE PER BAR. THE LENGTH OF LAP IS 20 INCHES.
- 2 TACK WELD DOWEL BARS TO THE BASKETS ON ALTERNATE ENDS.
- 3 THE CONTRACTOR MAY USE NO. 4 BARS SPACED AT 2'-0" C-C IN BOTH THE LONGITUDINAL AND TRANSVERSE DIRECTIONS FOR TOP REINFORCEMENT AS AN ALTERNATIVE TO THE WELDED WIRE FABRIC.
- 4 THE CONTRACTOR MAY OMIT TIE BARS BETWEEN REINFORCED SLABS WHERE SLAB REINFORCEMENT BARS EXTEND ACROSS THE CENTERLINE OR REFERENCE LINE.
- 5 DO NOT CONSTRUCT AN EXPANSION JOINT OR INSTALL DOWEL BARS WHEN ABUTTING AN HMA PAVEMENT.
- 6 USE A JOINT SEALANT MEETING THE REQUIREMENTS OF ASTM D6690.
- 7 PLACE EXPANSION CAP ON THE END OF THE DOWEL THAT IS NOT TACK WELDED TO THE BASKET. DO NOT FORCE DOWEL BAR PAST THE DOWEL STOP.

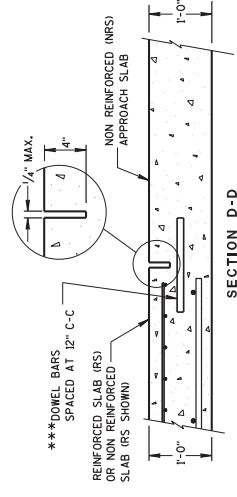
- A STANDARD CONTRACTION JOINT NORMAL TO R OR Q
- B STANDARD LONGITUDINAL JOINT WITH TIE BARS.
- C 1/2" EXPANSION JOINT WITH DOWEL BARS NORMAL TO R OR Q



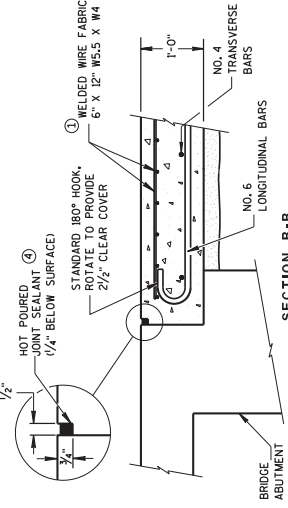
**REINFORCEMENT POSITIONING DETAIL
SECTION A-A**



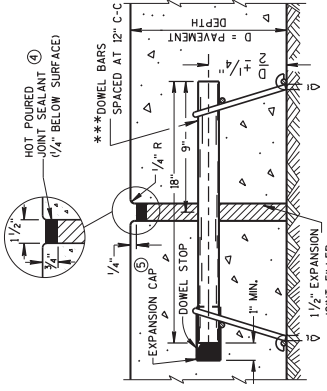
**TRANSITION DETAIL
APPROACH SLAB TO ADJACENT PAVEMENT
SECTION C-C**



**CONTRACTION JOINT
SECTION D-D**



**SECTION B-B
BEND DETAIL
BOTTOM REINFORCEMENT**



EXPANSION JOINT DETAIL

Addendum No. 02
ID 6498-05-71
Added Sheet 41A
March 2, 2016

CONCRETE PAVEMENT APPROACH SLAB
STATE OF WISCONSIN DEPARTMENT OF TRANSPORTATION
APPROVED June, 2005 DATE
/s/ Peter Kempf, P.E. PAVEMENT SUPERVISOR

SCHEDULE OF ITEMS

REVISED:

CONTRACT:
20160308022PROJECT(S):
6498-05-71FEDERAL ID(S):
WISC 2016064

CONTRACTOR : _____

LINE NO	ITEM DESCRIPTION	APPROX. QUANTITY AND UNITS	UNIT PRICE		BID AMOUNT	
			DOLLARS	CTS	DOLLARS	CTS
0100	205.0100 Excavation Common ***	655.000 CY
0110	206.1000 Excavation for Structures Bridges (structure) 01. P-44-713	LUMP	LUMP	.	.	.
0120	210.0100 Backfill Structure	165.000 CY
0130	213.0100 Finishing Roadway (project) 01. 6498-05-71	1.000 EACH
0140	305.0120 Base Aggregate Dense 1 1/4-Inch	1,230.000 TON
0150	415.0060 Concrete Pavement 6-Inch	160.000 SY
0160	415.0080 Concrete Pavement 8-Inch	720.000 SY
0170	416.0160 Concrete Driveway 6-Inch	16.000 SY
0180	416.0620 Drilled Dowel Bars	54.000 EACH
0190	455.0605 Tack Coat	4.000 GAL
0200	465.0105 Asphaltic Surface	21.000 TON

SCHEDULE OF ITEMS

REVISED:

CONTRACT:
20160308022

PROJECT(S):
6498-05-71

FEDERAL ID(S):
WISC 2016064

CONTRACTOR : _____

LINE NO	ITEM DESCRIPTION	APPROX. QUANTITY AND UNITS	UNIT PRICE		BID AMOUNT	
			DOLLARS	CTS	DOLLARS	CTS
1070	ASP.1T0A On-the-Job Training Apprentice at \$5.00/HR	300.000 HRS	5.00000		1500.00	
1080	ASP.1T0G On-the-Job Training Graduate at \$5.00/HR	600.000 HRS	5.00000		3000.00	
1090	SPV.0060 Special 01. Precast Concrete Shim Pad	10.000 EACH	.		.	
1100	SPV.0060 Special 02. Adjusting Water Valve Boxes	6.000 EACH	.		.	
1110	SPV.0060 Special 03. Adjusting Water Service Curb Stop	1.000 EACH	.		.	
1120	SPV.0060 Special 04. Cast Iron Monument Cover	1.000 EACH	.		.	
1130	SPV.0105 Special 01. Concrete Pavement Joint Layout	LUMP	LUMP		.	
1140	SPV.0120 Special 01. Water For Seeded Areas	8.000 MGAL	.		.	
1150	SPV.0165 Special 01. Sidewalk HES 4-Inch	455.000 SF	.		.	
1160	415.0410 Concrete Pavement Approach Slab	145.000 SY	.		.	
	SECTION 0001 TOTAL				.	
	TOTAL BID				.	