

Wisconsin Department of Transportation

February 29, 2016

Division of Transportation Systems Development

Bureau of Project Development
 4802 Sheboygan Avenue, Rm 601
 P O Box 7916
 Madison, WI 53707-7916

Telephone: (608) 266-1631
 Facsimile (FAX): (608) 266-8459

NOTICE TO ALL CONTRACTORS:

Proposal #27: 6350-01-62, WISC 2016 074
Marshfield – Junction City
WCL RR Bridge B-71-39
USH 10
Wood County

6350-07-77, WISC 2016 069
Marshfield – Stevens Point
WCL RR – CTH F
V of Auburndale
USH 10
Wood County

6350-07-87
Marshfield – Stevens Point
WCL RR – CTH F
V of Auburndale
Local Utilities
CTH P
Wood County

6350-07-88, WISC 2016 070
Marshfield – Stevens Point
CTH P Realignment,
V of Auburndale
CTH P
Wood County

Letting of March 8, 2016

This is Addendum No.01, which provides for the following:

Special Provisions

Deleted Special Provisions	
Article No.	Description
52	CPRC Class Arch-III 45x73-Inch, Item SPV.0090.01

Schedule of Items

Revised Bid Item Quantities					
Bid Item	Item Description	Unit	Old Quantity	Revised Quantity	Proposal Total
205.0100	Excavation Common	CY	60,838	-2,926	57,912
208.0100	Borrow	CY	27,212	1,219	28,431
504.0900	Concrete Masonry Endwalls	CY	52.9	1.7	54.6
505.0600	Bar Steel Reinforcement HS Coated Structures	LB	5,230	100	5,330

Added Bid Item Quantities					
Bid Item	Item Description	Unit	Old Quantity	Revised Quantity	Proposal Total
523.0148	CPRC Class HE-III 48x76-Inch	LF	0	186	186

Deleted Bid Item Quantities					
Bid Item	Item Description	Unit	Old Quantity	Revised Quantity	Proposal Total
505.0904	Bar Couplers No. 4	Each	4	-4	0
505.0905	Bar Couplers No. 5	Each	6	-6	0
505.0906	Bar Couplers No. 6	Each	18	-18	0
505.0908	Bar Couplers No. 8	Each	12	-12	0
SPV.0090.01	CPRC Class Arch-III 45x73-Inch	LF	186	-186	0

Plan Sheets

Revised Plan Sheets	
Plan Sheet	Plan Sheet Title (brief description of changes to sheet)
146-147	Miscellaneous Quantities (updated Excavation Common and Borrow USH 10 Frontage Rd)
175	Miscellaneous Quantities (changed pipe item and updated masonry endwall quantity)
214	Plan and profile (updated pipe invert elevation)
344-348	Structure B-71-39 Plans revised to remove staging of bridge work since the roadway will be closed to traffic.
351	Earthwork Tabulations – removed Pedestrian Underpass earth work
507	x-sec (updated pipe invert elevations)

Schedule of Items

Attached, dated February 29, 2016, are the revised Schedule of Items Pages 1 – 27.

Plan Sheets

The following 8½ x 11-inch sheets are attached and made part of the plans for this proposal:
Revised: 146-147,175, 214, 344-348, 351 and 507.

The responsibility for notifying potential subcontractors and suppliers of these changes remains with the prime contractor.

Sincerely,

Mike Coleman

Proposal Development Specialist
Proposal Management Section

END OF ADDENDUM

Addendum No. 01
 ID 6350-01-62
 ID 6350-07-77
 ID 6350-07-87
 ID 6350-07-88
 Revised Sheet 146
 February 29, 2016

EARTHWORK SUMMARY

DIVISION	STATION	LOCATION	(1)		(2)(3)		(4)		(5)		(6)		(7)		(8)		COMMENTS	
			EXCAVATION CY	UNUSABLE CY	SALVAGED/ COMMON MATERIAL CY	AVAILABLE CY	MARSH EXCAVATION CY	SELECT BORROW CY	UNEXPANDED FILL CY	EXPANDED FILL CY	MASS ORDINATE CY	WASTE CY	208.0100 BORROW CY					
DIVISION 1 (STAGE 1) PROJECT 6350-07-77 (USH 10 FRONTAGE ROADS) CATEGORY 0020			153	38	115	153	199	84	38	84	208.0100							
		INTERSECTION	5692	1423	4269	17807	23149	-18880	1423	18880								
		A-LINE	143	36	107	143	186	-79	36	79								
		INTERSECTION	98	25	73	98	127	-54	25	54								
		INTERSECTION	183	46	137	183	238	-101	46	101								
		INTERSECTION	111	28	83	111	144	-61	28	61								
		INTERSECTION	188	42	146	188	242	-96	42	96								
		D-LINE	1099	275	824	1099	1422	-102	275	102								
		D-LINE	810	202	608	810	1062	-545	202	545								
		E-LINE	2841	710	2131	2841	3551	-6419	710	6419								
			12567	3142	9424	12567	15877	-24853	3142	24853								
			12567	3142	9424	12567	15877	-24853	3142	24853								
DIVISION 1 (STAGE 1) TOTAL			12567	3142	9424	12567	15877	-24853	3142	24853								
CATEGORY 0020 SUBTOTAL PROJECT 6350-07-77 (USH 10 FRONTAGE ROADS) TOTAL			12567	3142	9424	12567	15877	-24853	3142	24853								
DIVISION 2 (STAGE 2) PROJECT 6350-07-88 CATEGORY 0010			12591	1207	11384	12591	13588	17625	1207	6241								
		CTHP	7312	770	6542	7312	800	780	5762	770								
		MARSHFIELD STREET	3583	152	3431	3583	196	250	3176	152								
		MARSHFIELD STREET	23486	2129	21357	23486	14384	18680	2697	2129								
			23486	2129	21357	23486	14384	18680	2697	2129								
CATEGORY 0010 SUBTOTAL PROJECT 6350-07-88 TOTAL			12591	1207	11384	12591	13588	17625	1207	6241								
PROJECT 6350-07-77 CATEGORY 0010			1835	885	950	1835	5817	7562	885	6612								
		CTHP	646	162	484	646	113	147	337	162								
		CTHM	2481	1047	1434	2481	5930	7709	6275	1047								
			2481	1047	1434	2481	5930	7709	6275	1047								
CATEGORY 0010 SUBTOTAL PROJECT 6350-07-77 SUBTOTAL			25967	3176	22791	25967	20314	26369	3176	3578								
PROJECT 6350-07-77 CATEGORY 0010			25967	3176	22791	25967	20314	26369	3176	3578								
CATEGORY 0010 SUBTOTAL PROJECT 6350-07-77 SUBTOTAL			25967	3176	22791	25967	20314	26369	3176	3578								
PROJECT 6350-07-77 CATEGORY 0010			25967	3176	22791	25967	20314	26369	3176	3578								
CATEGORY 0010 SUBTOTAL PROJECT 6350-07-77 SUBTOTAL			14525	6399	8126	14525	1144	1489	6399	6637								
			14525	6399	8126	14525	1144	1489	6399	6637								
DIVISION 3 (STAGE 3) PROJECT 6350-07-77 CATEGORY 0010			254	61	46	254	287	374	61	254								
		CTHP (OVERLAY)	5192	2300	2892	5192	287	374	2518	2300								
		CTHP	640	19	621	640	0	0	0	640								
		CTHP (3" OVERLAY)	20+29.00 - 20+82.48	19	116	19	23	30	86	19								
		E-Z AVENUE	21+00.00 - 22+08.37	57	0	57	0	203	-207	0								
		SHARED-USE PATH	70+16.50 - 71+00.00	312	25	287	0	3	284	25								
		SCHOOL AVENUE	80+16.0 - 80+43.58	75	45	30	0	0	30	45								
		BRICKLE AVENUE	90+16.0 - 90+50.77	80	50	30	0	0	30	50								
		GEORGE AVENUE																
CATEGORY 0010 SUBTOTAL PROJECT 6350-07-77 SUBTOTAL			14525	6399	8126	14525	1144	1489	6399	6637								
			14525	6399	8126	14525	1144	1489	6399	6637								
DIVISION 3 (STAGE 3) TOTAL			14525	6399	8126	14525	1144	1489	6399	6637								

UTILIZE EXCESS WASTE MATERIAL AS MARSH BACKFILL

3" OVERLAY NOT INCLUDED IN EXISTING SURFACE
 3" OVERLAY NOT INCLUDED IN EXISTING SURFACE

NOTE: ALL ITEMS AND QUANTITIES ON THIS SHEET ARE FOR ENGINEER ESTIMATE CATEGORY 0010, UNLESS OTHERWISE NOTED.

Addendum No. 01
 ID 6350-01-62
 ID 6350-07-77
 ID 6350-07-87
 ID 6350-07-88
 Revised Sheet 147
 February 29, 2016

3

EARTHWORK SUMMARY CONTD

DIVISION	STATION	LOCATION	(1) EXCAVATION COMMON CY	(2)(3) SALVAGED/ UNUSABLE MATERIAL CY	(4) AVAILABLE MATERIAL CY	(5) MARSH EXCAVATION CY	(6) SELECT BORROW CY	(7) EXPANDED FILL CY	(8) MASS EXPANDED ORDINATE CY	WASTE CY	208.0100 BORROW CY	COMMENTS
DIVISION 4 (STAGE 4)												
PROJECT 6350-07-77												
CATEGORY 0010												
	297+64.21 - 309+50.41	CTHP	3371	1140	2231	30	0	40	2180	1140	-2190	
	297+64.21 - 309+50.41	CTHP (3" OVERLAY)	346	346	0	0	0	0	0	346	0	3" OVERLAY NOT INCLUDED IN EXISTING SURFACE
	45+75.00 - 48+27.95	NORTH ROAD	141	85	56	0	0	608	-734	85	734	
	48+43.21 - 49+36.80	NORTH ROAD	265	66	199	0	0	83	91	66	-91	
	49+85.05 - 50+40.00	NORTH ROAD	272	93	179	0	0	4	173	93	-173	
	100+19.5 - 102+24.91	CONNOR STREET	413	215	198	0	0	14	179	215	-179	
	100+19.5 - 102+24.91	CONNOR STREET (3" OVERLAY)	45	45	0	0	0	0	0	45	0	3" OVERLAY NOT INCLUDED IN EXISTING SURFACE
	CATEGORY 0010 SUBTOTAL		4853	1990	2863	30	0	749	1889	1990	-1899	
	PROJECT 6350-07-77 SUBTOTAL		4853	1990	2863	30	0	749	1889	1990	-1899	
PROJECT 6350-07-88												
CATEGORY 0010												
	207+11.65 - 223+00.00	CTHP	0	0	0	0	0	0	0	0	0	
	CATEGORY 0010 SUBTOTAL		0	0	0	0	0	0	0	0	0	
	PROJECT 6350-07-88 SUBTOTAL		0	0	0	0	0	0	0	0	0	
DIVISION 4 (STAGE 4) TOTAL												
	PROJECT 6350-07-77 CATEGORY 0010 TOTAL		4853	1990	2863	30	0	749	1889	1990	-1899	
	PROJECT 6350-07-77 CATEGORY 0020 TOTAL		21859	0	2357	0	619	0	0	0	3579	
	PROJECT 6350-07-88 CATEGORY 0010 TOTAL		23466	0	608	808	0	0	0	0	24853	
	GRAND TOTALS		57912	1990	2863	30	1427	749	974	1990	-1899	

- (1) EXCAVATION COMMON IS THE TOTAL VOLUME OF CUT. ITEM NUMBER 205.0100
 - (2) SALVAGED/UNUSABLE PAVEMENT MATERIAL ARE INCLUDED IN THE QUANTITY OF EXCAVATION COMMON.
 - (3) SALVAGED/UNUSABLE PAVEMENT MATERIAL. STAGE 1 ASSUMED 25% OF CUT WILL BE SATURATED CLAY/SILT MATERIALS.
 - (4) AVAILABLE MATERIAL = EXCAVATION COMMON - UNUSABLE PAVEMENT MATERIAL.
 - (5) MARSH EXCAVATION WAS ASSUMED AT A DEPTH OF 12". NO MARSH PROBES WERE TAKEN.
 - (6) EXPANDED MARSH BACKFILL FACTOR = 1.50. EXCAVATED MARSH AREAS WITHIN THE SUBGRADE LIMITS WILL BE FILLED WITH THE ITEM OF SELECT BORROW MATERIAL. WASTE MATERIAL OUTSIDE THE SUBGRADE LIMITS MAY BE USED WITH THE APPROVAL OF THE ENGINEER IN THE FIELD.
 - (7) STAGES 2, 3 AND 4 EXPANDED FILL FACTOR = 1.30 STAGE 1 EXPANDED FILL FACTOR = 1.30
 - (8) THE MASS ORDINATE + OR - QTY FOR THE DIVISION. PLUS QUANTITY INDICATES AN EXCESS OF MATERIAL AND A MINUS QUANTITY INDICATES A SHORTAGE OF MATERIAL WITHIN THE DIVISION.
- THE MASS ORDINATE IS = EXCAVATION COMMON - SALVAGED/UNUSABLE PAVEMENT MATERIAL - EXPANDED FILL.

NOTE: ALL ITEMS AND QUANTITIES ON THIS SHEET ARE FOR ENGINEER ESTIMATE CATEGORY 0010, UNLESS OTHERWISE NOTED.

3

Addendum No. 01
 ID 6350-01-62
 ID 6350-07-77
 ID 6350-07-87
 ID 6350-07-88
 Revised Sheet 175
 February 29, 2016

STATION	LOCATION	EA	CY	LF	EA	LF	EA	LF	EA	LF	EA	LF	EA	LF	EA	LF	EA	LF	EA	LF	REMARKS	
PROJECT 6350-07-77																						
CATEGORY 0020																						
STAGE 1																						
10+34'A'	RT	1	---	---	---	---	---	---	---	---	---	---	---	---	---	---	---	---	---	---	523.0148 CPRC CLASS HE-III 48X76-INCH	
10+75.7'A'	LT & RT	---	---	---	---	---	---	---	---	---	---	---	---	---	---	---	---	---	---	---	18-INCH CMCP	
19+00'A'	LT	---	---	---	---	---	---	---	---	---	---	---	---	---	---	---	---	---	---	---	MAINLINE	
19+00'A'	RT	---	---	---	---	---	---	---	---	---	---	---	---	---	---	---	---	---	---	---	DRIVEWAY	
23+18.5'A'	LT & RT	---	8.8	---	---	---	---	---	---	---	---	---	---	---	---	---	---	---	---	---	DRIVEWAY	
23+25'A'	LT & RT	---	---	---	---	---	---	---	---	---	---	---	---	---	---	---	---	---	---	---	DRIVEWAY	
23+31.5'A'	LT & RT	---	---	---	---	---	---	---	---	---	---	---	---	---	---	---	---	---	---	---	MAINLINE	
28+00'A'	RT	---	---	---	---	---	---	---	---	---	---	---	---	---	---	---	---	---	---	---	MAINLINE	
39+00'A'	RT	---	---	---	---	---	---	---	---	---	---	---	---	---	---	---	---	---	---	---	DRIVEWAY	
40+50'A'	LT & RT	---	---	---	---	---	---	---	---	---	---	---	---	---	---	---	---	---	---	---	DRIVEWAY	
49+00'A'	LT	---	---	---	---	---	---	---	---	---	---	---	---	---	---	---	---	---	---	---	MAINLINE	
49+00'A'	RT	---	---	---	---	---	---	---	---	---	---	---	---	---	---	---	---	---	---	---	DRIVEWAY	
54+49.92'A'	LT & RT	---	23.8	---	---	---	---	---	---	---	---	---	---	---	---	---	---	---	---	---	DRIVEWAY	
54+60'A'	LT & RT	---	---	---	---	---	---	---	---	---	---	---	---	---	---	---	---	---	---	---	MAINLINE	
54+70.08'A'	LT & RT	---	---	---	---	---	---	---	---	---	---	---	---	---	---	---	---	---	---	---	MAINLINE	
63+00'A'	RT	---	---	---	---	---	---	---	---	---	---	---	---	---	---	---	---	---	---	---	DRIVEWAY	
201+44'C'	RT	---	---	---	---	---	---	---	---	---	---	---	---	---	---	---	---	---	---	---	DRIVEWAY	
204+12.5'C'	LT & RT	---	---	---	---	---	---	---	---	---	---	---	---	---	---	---	---	---	---	---	MAINLINE	
204+19.1'C'	LT & RT	---	---	---	---	---	---	---	---	---	---	---	---	---	---	---	---	---	---	---	MAINLINE	
205+00'C'	LT	---	---	---	---	---	---	---	---	---	---	---	---	---	---	---	---	---	---	---	DRIVEWAY	
300+46.4'D'	LT & RT	---	---	---	---	---	---	---	---	---	---	---	---	---	---	---	---	---	---	---	MAINLINE	
303+50'D'	LT	---	---	---	---	---	---	---	---	---	---	---	---	---	---	---	---	---	---	---	DRIVEWAY	
303+50'D'	RT	---	---	---	---	---	---	---	---	---	---	---	---	---	---	---	---	---	---	---	DRIVEWAY	
315+28'D'	RT	1	---	---	---	---	---	---	---	---	---	---	---	---	---	---	---	---	---	---	2-INCH CP/CP	
401+02.7'E'	LT & RT	---	17.3	---	---	---	---	---	---	---	---	---	---	---	---	---	---	---	---	---	MAINLINE	
401+09.5'E'	LT & RT	---	---	---	---	---	---	---	---	---	---	---	---	---	---	---	---	---	---	---	MAINLINE	
401+16.3'E'	LT & RT	---	---	---	---	---	---	---	---	---	---	---	---	---	---	---	---	---	---	---	MAINLINE	
409+75'E'	LT	---	---	---	---	---	---	---	---	---	---	---	---	---	---	---	---	---	---	---	DRIVEWAY	
CATEGORY 0020 SUBTOTAL		2	54.6	510	26	214	192	6	140	180	186	186	180	140	140	180	180	180	180	186		
PROJECT 6350-07-77 SUBTOTAL		2	54.6	510	26	214	192	6	140	180	186	186	180	140	140	180	180	180	180	180	186	
PROJECT ITEM TOTALS		*2	54.6	*510	*26	214	192	*6	140	180	186	186	180	140	140	180	180	180	180	180	186	

PIPE CULVERTS

GRUBBING

STATION	-	STATION	LOCATION	201.0205 GRUBBING STA
25+25'A'	-	37+50'A'	LT & RT	12
63+85'A'	-	66+65'A'	LT & RT	4
100+05'B'	-	100+40'B'	LT & RT	1
301+90'D'	-	305+50'D'	LT & RT	5
315+90'D'	-	316+75'D'	LT & RT	2
401+50'E'	-	404+10'E'	LT & RT	4
407+50'E'	-	409+00'E'	LT & RT	2
411+65'E'	-	415+00'E'	LT & RT	4
416+00'E'	-	418+10'E'	LT & RT	3
CATEGORY 0020 SUBTOTAL				37
PROJECT 6350-07-77 SUBTOTAL				37
PROJECT ITEM TOTALS				*37

OBLITERATING OLD ROAD

STATION	-	STATION	LOCATION	214.0100 STA
300+50'D'	-	301+53'D'	RT	2
CATEGORY 0020 SUBTOTAL				2
PROJECT 6350-07-77 SUBTOTAL				2
PROJECT ITEM TOTALS				*2

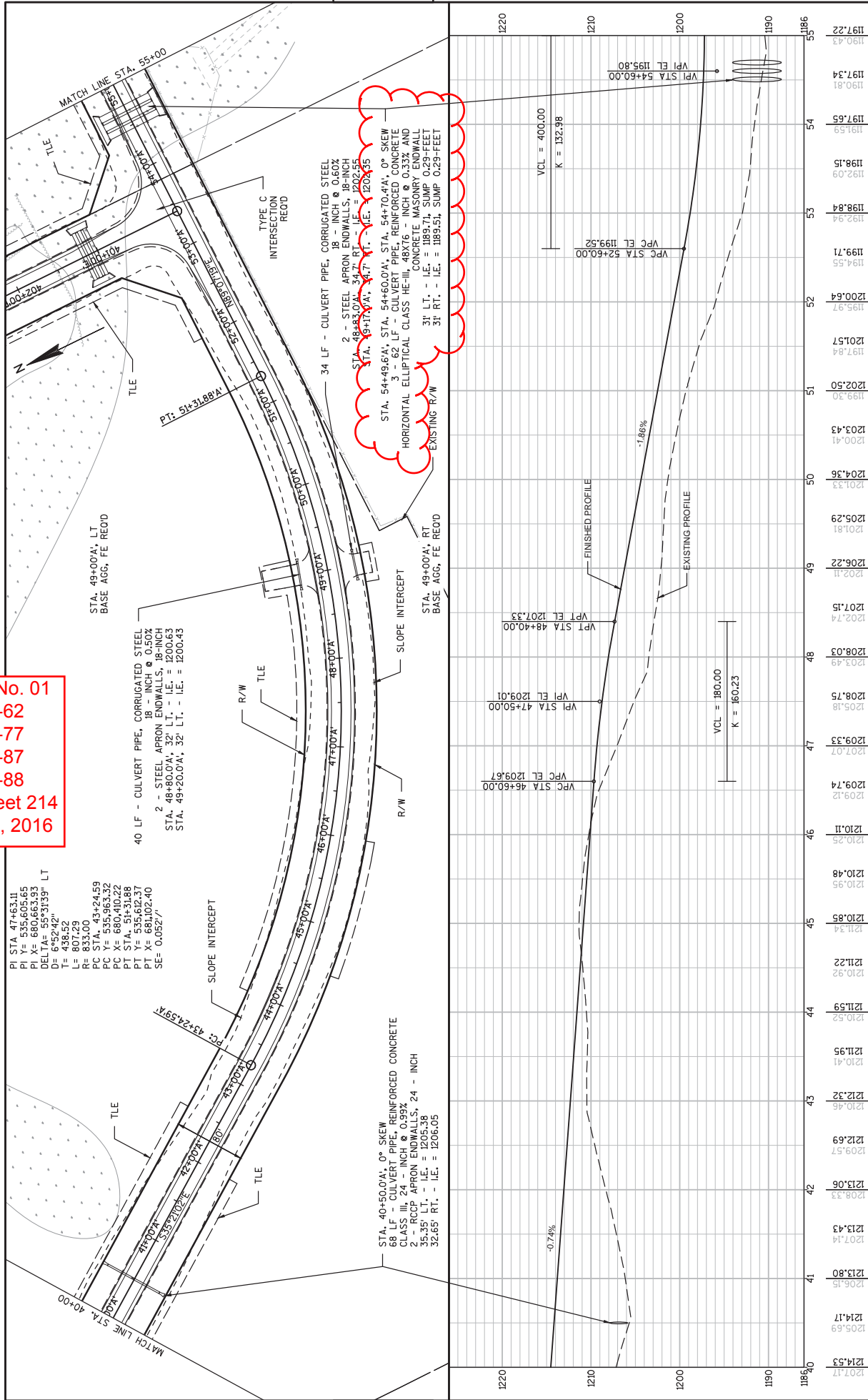
***NOTE: MINIMUM THICKNESS SHALL BE 0.064" FOR STEEL AND 0.060" FOR ALUMINUM

**NOTE: QUANTITY FOR INFORMATION ONLY

NOTE: ALL ITEMS AND QUANTITIES ON THIS SHEET ARE FOR ENGINEERS ESTIMATE CATEGORY 0020, UNLESS OTHERWISE NOTED

* ADDITIONAL QUANTITIES SHOWN ELSEWHERE

Addendum No. 01
ID 6350-01-62
ID 6350-07-77
ID 6350-07-87
ID 6350-07-88
Revised Sheet 214
February 29, 2016

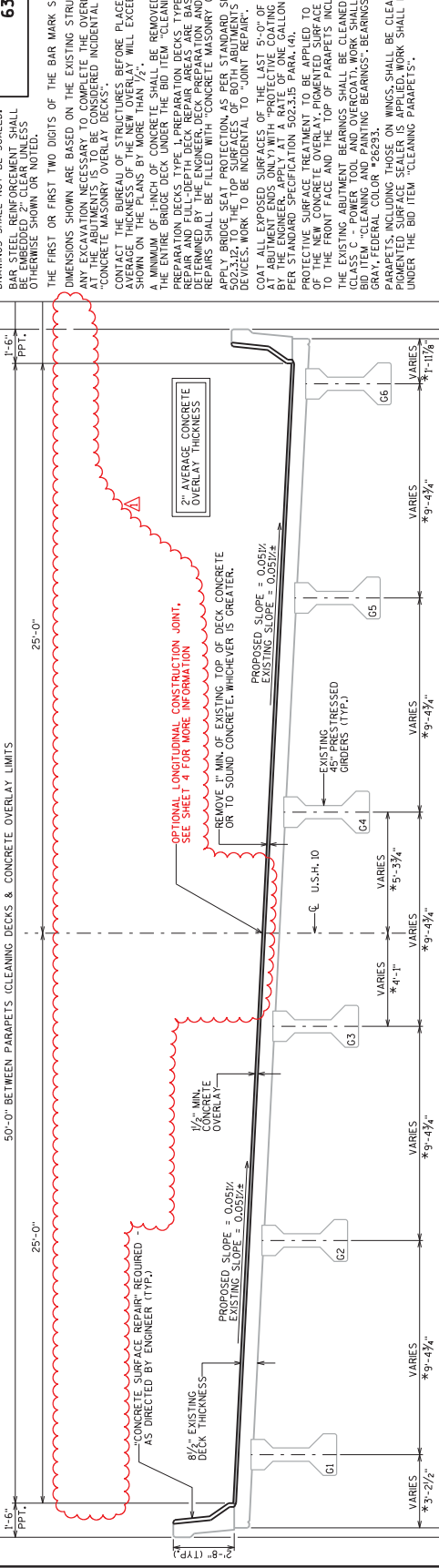


STATION	ELEVATION
1201.17	1214.53
1205.69	1214.17
1208.33	1213.80
1209.57	1213.43
1210.46	1213.06
1212.32	1212.69
1210.41	1212.32
1211.95	1211.95
1210.52	1211.59
1210.92	1211.22
1210.95	1210.95
1210.48	1210.48
1210.25	1210.11
1209.12	1209.74
1207.07	1209.33
1205.18	1208.75
1205.18	1208.03
1202.74	1207.15
1202.41	1206.22
1201.81	1205.29
1201.33	1204.36
1200.41	1203.43
1199.30	1202.50
1197.84	1201.57
1195.97	1200.64
1194.55	1199.71
1192.94	1198.84
1192.09	1198.15
1191.59	1197.65
1190.81	1197.34
1190.43	1197.22

STATE PROJECT NUMBER
6350-01-62

GENERAL NOTES

DRAWINGS SHALL NOT BE SCALED.
BAR STEEL REINFORCEMENT SHALL BE EMBEDDED 2" CLEAR UNLESS OTHERWISE SHOWN OR NOTED.
DIMENSIONS SHOWN ARE BASED ON THE EXISTING STRUCTURE PLANS.
ANY EXCAVATION NECESSARY TO COMPLETE THE OVERLAY OR JOINT REPAIR SHALL BE CONSIDERED INCIDENTAL TO THE BID ITEM.
CONCRETE MASONRY OVERLAY SHALL BE CONSIDERED INCIDENTAL TO THE BID ITEM.
CONTACT THE BUREAU OF STRUCTURES BEFORE PLACEMENT OF OVERLAY IF THE AVERAGE THICKNESS OF THE NEW OVERLAY WILL EXCEED THE AVERAGE OVERLAY SHOWN ON THE PLANS BY MORE THAN 1/2".
A MINIMUM OF 1-INCH OF CONCRETE SHALL BE REMOVED FROM DECK SURFACES TO BE REPAIRED.
PREPARATION DECKS TYPE 1, PREPARATION DECKS TYPE 2, CONCRETE SURFACE REPAIR AND FULL-DEPTH DECK REPAIR ARE BASED ON THE PLANS AND AS DETERMINED BY THE ENGINEER. DECK PREPARATION AND FULL DEPTH DECK REPAIRS SHALL BE FILLED WITH CONCRETE MASONRY OVERLAY DECKS.
CONCRETE MASONRY OVERLAY DECKS SHALL BE CONFORMED TO SECTION 502.3.1 TO THE TOP SURFACES OF BOTH ABUTMENTS BELOW EXPANSION DEVICES. WORK TO BE INCIDENTAL TO "JOINT REPAIR".
COAT ALL EXPOSED SURFACES OF THE LAST 5'-0" OF ORDERS (SPANS 1 & 3 AT ABUTMENT ENDS ONLY) WITH "PROTECTIVE COATING CLEAR" AS DIRECTED PER STANDARD SPECIFICATION 502.3.15 (PARA. 4).
PROTECTIVE SURFACE TREATMENT TO BE APPLIED TO THE ENTIRE TOP SURFACE OF THE NEW CONCRETE OVERLAY, POINTED SURFACE SEALER TO BE APPLIED TO THE FRONT FACE AND THE TOP OF PARAPETS INCLUDING PARAPETS ON WINGS.
THE EXISTING ABUTMENT BEARINGS SHALL BE CLEANED AND REPAIRED TO THE EXISTING BEARING SURFACES.
BID ITEM "CLEANING AND PAINTING BEARINGS" BEARINGS ARE TO BE PAINTED GRAY, FEDERAL COLOR #26293.
PARAPETS INCLUDING THOSE ON WINGS, SHALL BE CLEANED BEFORE THE POINTED SURFACE SEALER IS APPLIED. WORK SHALL BE COVERED UNDER THE BID ITEM "CLEANING PARAPETS".



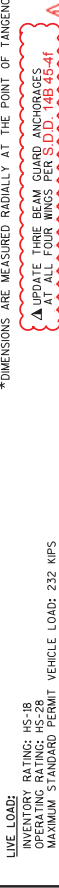
CROSS SECTION THRU ROADWAY LOOKING NORTH

DIMENSIONS ARE MEASURED RADially AT THE POINT OF TANGENCY.

DESIGN DATA

LIVE LOAD:
RATING: HS-18
OPERATING RATING: HS-20
MAXIMUM STANDARD PERMIT VEHICLE LOAD: 232 KIPS

MATERIAL PROPERTIES:
CONCRETE MASONRY OVERLAY DECKS: $f_c = 4,000$ P.S.I.
BAR STEEL REINFORCEMENT, GRADE 60: $f_y = 60,000$ P.S.I.



LIST OF DRAWINGS

1. CONCRETE OVERLAY
2. SOUTH ABUTMENT JOINT REPAIR
3. NORTH ABUTMENT JOINT REPAIR
4. BAR DETAILS
5. EXPANSION DEVICE
6. COVER PLATE DETAILS

STRUCTURES DESIGN CONTACTS:
DAVE GENSION (608)266-8491
JOEL HUENNIK (608)266-5160

PLAN
TOP OF DECK SHOWN

INDICATES WING NUMBERS

TOTAL ESTIMATED QUANTITIES

BID ITEM NUMBERS	BID ITEMS	UNIT	TOTALS
502.3100	EXPANSION DEVICE B-71-39	LS	1
502.3200	PROTECTIVE SURFACE TREATMENT	SY	1056
502.3210	POINTED SURFACE SEALER	SY	244
502.4500	PROTECTIVE COATING CLEAR	GA	3
505.0600	BAR STEEL REINFORCEMENT HS COATED STRUCTURES	LB	5330
509.0300	PREPARATION DECKS TYPE 1	SY	120
509.0302	PREPARATION DECKS TYPE 2	SY	60
509.0500	CLEANING DECKS	SY	1056
509.1000	JOINT REPAIR	SY	65
509.1500	CONCRETE SURFACE REPAIR	SF	110
509.2000	FULL-DEPTH DECK REPAIR	SY	1
509.2500	CONCRETE MASONRY OVERLAY DECKS	CY	93
509.9050.5	CLEANING PARAPETS	LF	456
SPV.0060	CLEANING AND PAINTING BEARINGS	EACH	12

REMOVED STAGING DETAILS

NO.	DATE	REVISION	BY
1	12/22/16		JPH

Prepared By
WISDOT
BUREAU OF STRUCTURES
12/23/16
ACCEPTED
W. C. Dale
CHIEF STRUCTURES DESIGN ENGINEER

STRUCTURE B-71-39

U.S.H. 10 OVER CANADIAN NATIONAL RAILROAD

COUNTY: WOOD VILLAGE: ABUNDANCE

DESIGN SPEC.: REHABILITATION R/A

DESIGNED BY: JPH (GCD) DRAWN BY: JPH (GCD) ENK (GCD)

SHEET 1 OF 6

CONCRETE OVERLAY

344

I.D. 6350-01-32A DATE: FEB. 2016

Addendum No. 01

ID 6350-01-62
ID 6350-07-77
ID 6350-07-87
ID 6350-07-88
Revised Sheet 344
February 29, 2016

GENERAL NOTES

DRAWINGS SHALL NOT BE SCALED.
BAR STEEL REINFORCEMENT SHALL BE EMBEDDED 2" CLEAR UNLESS OTHERWISE SHOWN OR NOTED.
DIMENSIONS SHOWN ARE BASED ON THE EXISTING STRUCTURE PLANS.
ANY EXCAVATION NECESSARY TO COMPLETE THE OVERLAY OR JOINT REPAIR SHALL BE CONSIDERED INCIDENTAL TO THE BID ITEM.
CONCRETE MASONRY OVERLAY SHALL BE CONSIDERED INCIDENTAL TO THE BID ITEM.
CONTACT THE BUREAU OF STRUCTURES BEFORE PLACEMENT OF OVERLAY IF THE AVERAGE THICKNESS OF THE NEW OVERLAY WILL EXCEED THE AVERAGE OVERLAY SHOWN ON THE PLANS BY MORE THAN 1/2".
A MINIMUM OF 1-INCH OF CONCRETE SHALL BE REMOVED FROM DECK SURFACES TO BE REPAIRED.
PREPARATION DECKS TYPE 1, PREPARATION DECKS TYPE 2, CONCRETE SURFACE REPAIR AND FULL-DEPTH DECK REPAIR ARE BASED ON THE PLANS AND AS DETERMINED BY THE ENGINEER. DECK PREPARATION AND FULL DEPTH DECK REPAIRS SHALL BE FILLED WITH CONCRETE MASONRY OVERLAY DECKS.
CONCRETE MASONRY OVERLAY DECKS SHALL BE CONFORMED TO SECTION 502.3.1 TO THE TOP SURFACES OF BOTH ABUTMENTS BELOW EXPANSION DEVICES. WORK TO BE INCIDENTAL TO "JOINT REPAIR".
COAT ALL EXPOSED SURFACES OF THE LAST 5'-0" OF ORDERS (SPANS 1 & 3 AT ABUTMENT ENDS ONLY) WITH "PROTECTIVE COATING CLEAR" AS DIRECTED PER STANDARD SPECIFICATION 502.3.15 (PARA. 4).
PROTECTIVE SURFACE TREATMENT TO BE APPLIED TO THE ENTIRE TOP SURFACE OF THE NEW CONCRETE OVERLAY, POINTED SURFACE SEALER TO BE APPLIED TO THE FRONT FACE AND THE TOP OF PARAPETS INCLUDING PARAPETS ON WINGS.
THE EXISTING ABUTMENT BEARINGS SHALL BE CLEANED AND REPAIRED TO THE EXISTING BEARING SURFACES.
BID ITEM "CLEANING AND PAINTING BEARINGS" BEARINGS ARE TO BE PAINTED GRAY, FEDERAL COLOR #26293.
PARAPETS INCLUDING THOSE ON WINGS, SHALL BE CLEANED BEFORE THE POINTED SURFACE SEALER IS APPLIED. WORK SHALL BE COVERED UNDER THE BID ITEM "CLEANING PARAPETS".

DESIGN DATA

LIVE LOAD:
RATING: HS-18
OPERATING RATING: HS-20
MAXIMUM STANDARD PERMIT VEHICLE LOAD: 232 KIPS

MATERIAL PROPERTIES:
CONCRETE MASONRY OVERLAY DECKS: $f_c = 4,000$ P.S.I.
BAR STEEL REINFORCEMENT, GRADE 60: $f_y = 60,000$ P.S.I.

LIST OF DRAWINGS

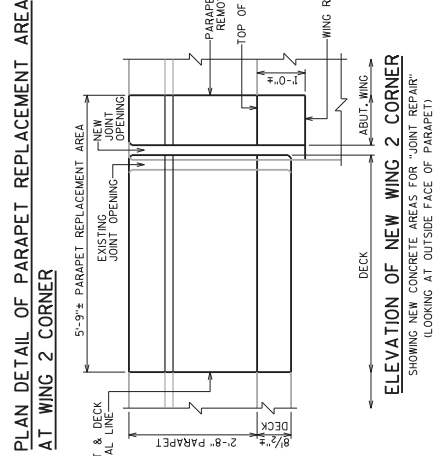
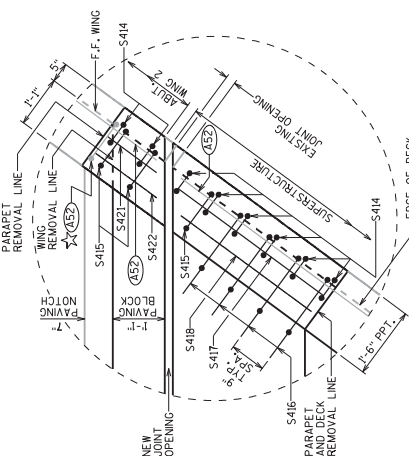
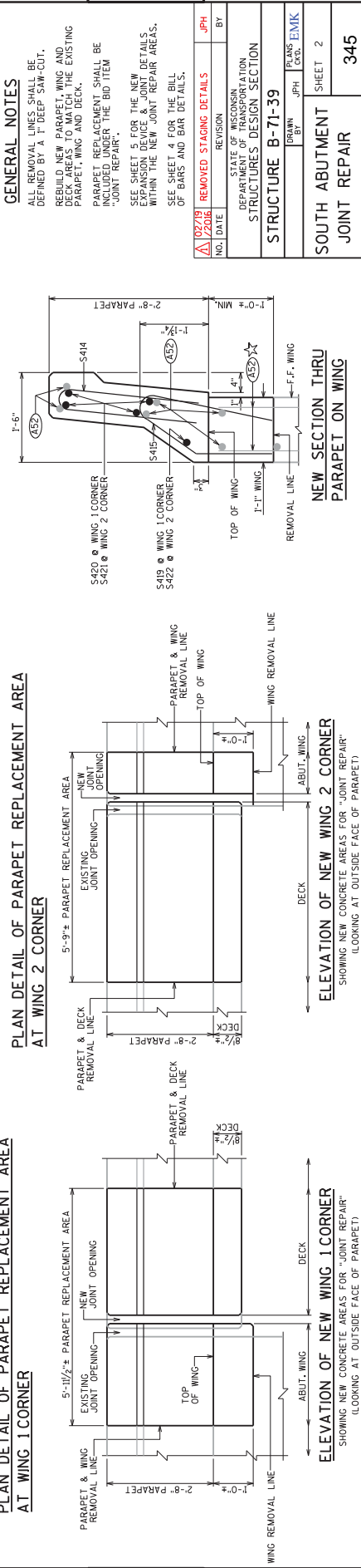
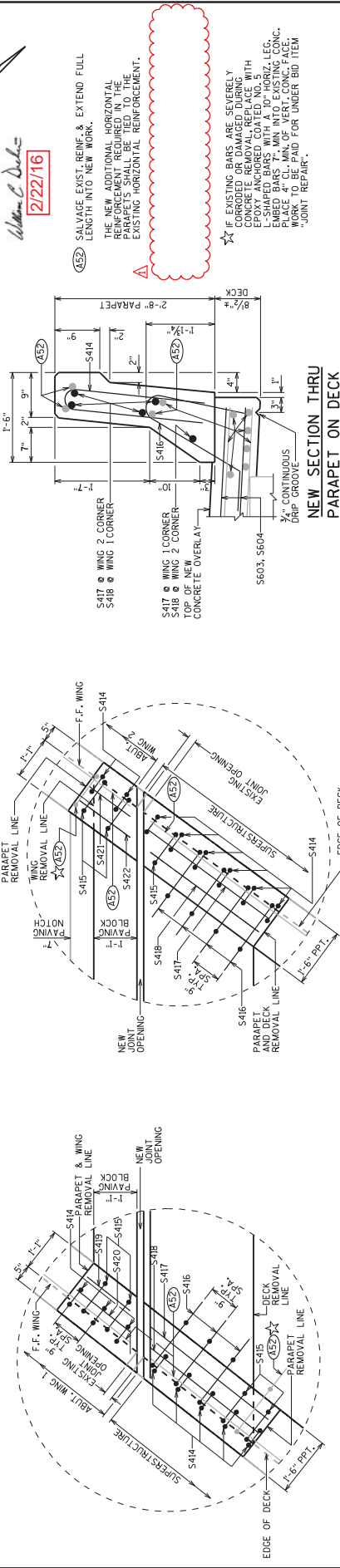
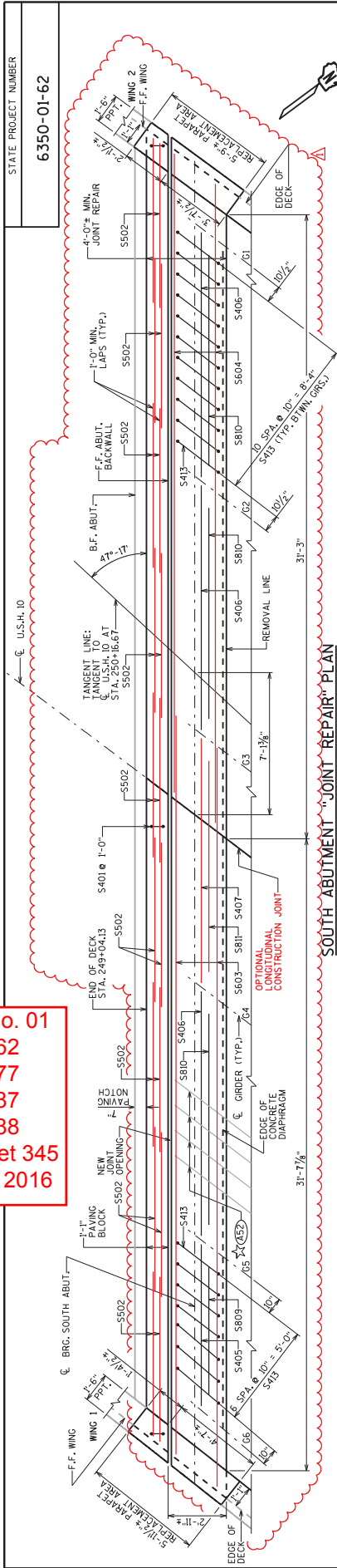
1. CONCRETE OVERLAY
2. SOUTH ABUTMENT JOINT REPAIR
3. NORTH ABUTMENT JOINT REPAIR
4. BAR DETAILS
5. EXPANSION DEVICE
6. COVER PLATE DETAILS

STRUCTURES DESIGN CONTACTS:
DAVE GENSION (608)266-8491
JOEL HUENNIK (608)266-5160

PLAN
TOP OF DECK SHOWN

INDICATES WING NUMBERS

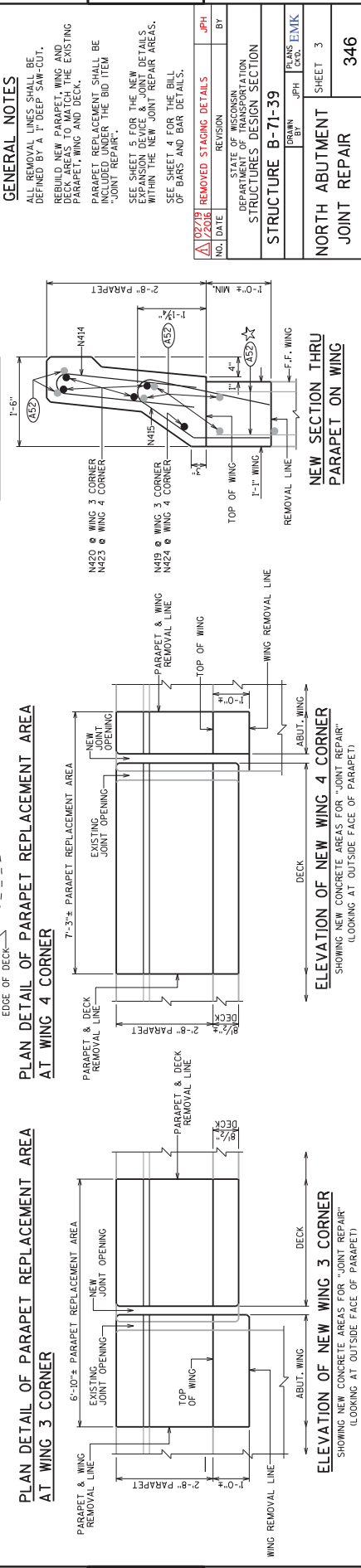
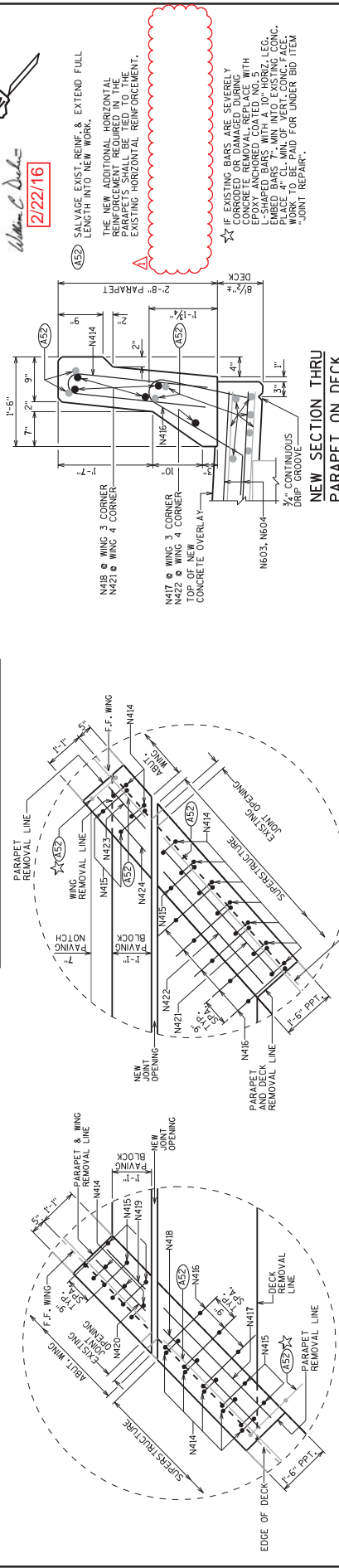
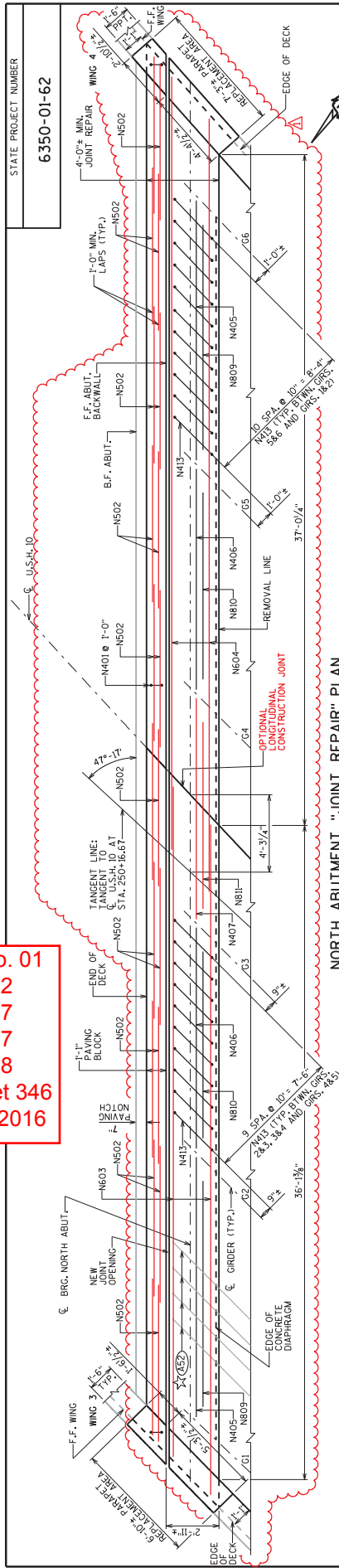
Addendum No. 01
 ID 6350-01-62
 ID 6350-07-77
 ID 6350-07-87
 ID 6350-07-88
 Revised Sheet 345
 February 29, 2016



GENERAL NOTES

- ALL REMOVAL LINES SHALL BE DEFINED BY A 1" DEEP SAW-CUT.
- REBUILD NEW PARAPET, WING AND DECK AREAS TO MATCH THE EXISTING PARAPET, WING AND DECK.
- PARAPET REPLACEMENT SHALL BE INCLUDED UNDER THE BID ITEM "JOINT REPAIR".
- SEE SHEET 5 FOR THE NEW DETAILS WITHIN THE NEW JOINT REPAIR AREAS.
- SEE SHEET 4 FOR THE BILL OF MATERIALS AND BAR DETAILS.

NO.	DATE	REVISION	BY
1	02/29/16	REVISED STAGING DETAILS	JPH
STATE OF WISCONSIN DEPARTMENT OF TRANSPORTATION STRUCTURES DESIGN SECTION			
STRUCTURE B-71-39			
DRAWN BY		PR. AS. WINK	
CHECKED BY		C. WINK	
DESIGNED BY		C. WINK	
APPROVED BY		C. WINK	
SHEET		2	
ABUTMENT		SOUTH	
JOINT REPAIR		345	



Addendum No. 01
 ID 6350-01-62
 ID 6350-07-77
 ID 6350-07-87
 ID 6350-07-88
 Revised Sheet 346
 February 29, 2016

GENERAL NOTES

- ALL REMOVAL LINES SHALL BE DEFINED BY A 1" DEEP SAW-CUT.
- REBUILD NEW PARAPET, WING AND DECK AREAS TO MATCH THE EXISTING PARAPET, WING AND DECK.
- PARAPET REPLACEMENT SHALL BE INCLUDED UNDER THE BID ITEM "JOINT REPAIR".
- SEE SHEET 5 FOR THE NEW EXPANSION DEVICE & JOINT DETAILS WITHIN THE NEW "JOINT REPAIR" AREAS.
- SEE SHEET 4 FOR THE BILL OF MATERIALS & BAR DETAILS.

NO. DATE	REVISION	BY
1/22/08	REMOVED STAGING DETAILS	JPH
STATE OF WISCONSIN DEPARTMENT OF TRANSPORTATION STRUCTURES DESIGN SECTION		
STRUCTURE B-71-39		
DRAWN BY	PR. AS. CO.	CHK.
JPH	EVK	
NORTH ABUTMENT JOINT REPAIR		SHEET 3
		346

NOTE:
THE FIRST OR FIRST TWO DIGITS OF
THE BAR MARK SIGNIFIES THE BAR SIZE.

BILL OF BARS - NORTH ABUTMENT JOINT REPAIR

BAR MARK	NO. REQ'D.	LENGTH	BAR SERIES	LOCATION
N401	37	3'-4"	X	PAVING BLOCK - VERT. - STAIRUP
N402	30	8'-8"	X	PAVING BLOCK - HORIZ.
N603	9	37'-0"	X	DECK - HORIZ. - TRANS. - TOP & BOT.
N604	9	42'-8"	X	DECK - HORIZ. - TRANS. - TOP & BOT.
N405	4	14'-4"	X	DECK - HORIZ. - TRANS. - BTWN. G1 & G2 AND G5 & G6
N406	4	12'-2"	X	DECK - HORIZ. - TRANS. - BTWN. G2&G3 AND G4&G5
N407	2	12'-3"	X	DECK - HORIZ. - TRANS. - BTWN. G3&G4
N408	--	--	X	NOT USED
N809	12	12'-5"	X	CONC. DIAPH. - BOT. - HORIZ. - TRANS. - BTWN. G5&G6 AND G1&G2
N810	12	10'-4"	X	CONC. DIAPH. - BOT. - HORIZ. - TRANS. - BTWN. G4&G5 AND G2&G3
N811	6	10'-4"	X	CONC. DIAPH. - BOT. - HORIZ. - TRANS. - BTWN. G3&G4
N812	--	--	X	NOT USED
N413	52	5'-10"	X	DECK/CONC. DIAPH. - VERT. - BTWN. GRS.
N414	17	4'-10"	X	PARAPET - VERT. - TRANS. - ABOVE DECK AND WINGS - AT WING CORNERS 3&4
N415	8	4'-7"	X	WING/DECK & PARAPET - VERT. - TRANS. - AT WING CORNERS 3&4
N416	8	4'-3"	X	DECK & PARAPET - VERT. - TRANS. - AT WING CORNERS 3&4
N417	1	4'-4"	X	DECK PARAPET - F.F. - HORIZ. - LONGIT. - AT WING CORNER 3
N418	4	3'-8"	X	DECK PARAPET - HORIZ. - LONGIT. - AT WING CORNER 3
N419	1	1'-7"	X	WING PARAPET - F.F. - HORIZ. - LONGIT. - AT WING CORNER 3
N420	4	2'-3"	X	WING PARAPET - HORIZ. - LONGIT. - AT WING CORNER 3
N421	4	4'-11"	X	DECK PARAPET - HORIZ. - LONGIT. - AT WING CORNER 4
N422	1	4'-2"	X	DECK PARAPET - F.F. - HORIZ. - LONGIT. - AT WING CORNER 4
N423	4	1'-4"	X	WING PARAPET - HORIZ. - LONGIT. - AT WING CORNER 4
N424	1	2'-2"	X	WING PARAPET - F.F. - HORIZ. - LONGIT. - AT WING CORNER 4

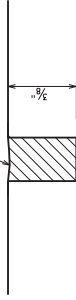
BILL OF BARS - SOUTH ABUTMENT JOINT REPAIR

BAR MARK	NO. REQ'D.	LENGTH	BAR SERIES	LOCATION
S401	66	3'-4"	X	PAVING BLOCK - VERT. - STAIRUP
S402	27	8'-3"	X	PAVING BLOCK - HORIZ.
S403	9	37'-0"	X	DECK - HORIZ. - TRANS. - TOP & BOT.
S404	9	42'-0"	X	DECK - HORIZ. - TRANS. - TOP & BOT.
S405	2	8'-1"	X	DECK - HORIZ. - TRANS. - BTWN. G5 & G6
S406	6	12'-3"	X	DECK - HORIZ. - TRANS. - BTWN. G2&G3 & G4&G5
S407	2	12'-3"	X	DECK - HORIZ. - TRANS. - BTWN. G3&G4
S408	--	--	X	NOT USED
S409	6	6'-5"	X	CONC. DIAPH. - BOT. - HORIZ. - TRANS. - BTWN. G5&G6
S410	18	10'-7"	X	CONC. DIAPH. - BOT. - HORIZ. - TRANS. - BTWN. G4&G5, G2&G3 & G1&G2
S411	6	10'-7"	X	CONC. DIAPH. - BOT. - HORIZ. - TRANS. - BTWN. G3&G4
S412	--	--	X	NOT USED
S413	51	5'-6"	X	DECK/CONC. DIAPH. - VERT. - BTWN. GRS.
S414	16	4'-10"	X	PARAPET - VERT. - TRANS. - ABOVE DECK AND WINGS - AT WING CORNERS 1&2
S415	7	4'-7"	X	WING/DECK & PARAPET - VERT. - TRANS. - AT WING CORNERS 1&2
S416	7	4'-3"	X	DECK & PARAPET - VERT. - TRANS. - AT WING CORNERS 1&2
S417	5	3'-9"	X	DECK PARAPET - HORIZ. - LONGIT. - AT WING CORNERS 1 & 2
S418	5	3'-3"	X	DECK PARAPET - HORIZ. - LONGIT. - AT WING CORNERS 1 & 2
S419	1	1'-4"	X	WING PARAPET - F.F. - HORIZ. - LONGIT. - AT WING CORNER 1
S420	4	1'-9"	X	WING PARAPET - HORIZ. - LONGIT. - AT WING CORNER 1
S421	4	1'-2"	X	WING PARAPET - HORIZ. - LONGIT. - AT WING CORNER 2
S422	1	1'-7"	X	WING PARAPET - F.F. - HORIZ. - LONGIT. - AT WING CORNER 2

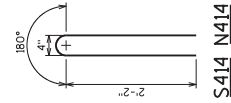
NOTE:
THE FIRST OR FIRST TWO DIGITS OF
THE BAR MARK SIGNIFIES THE BAR SIZE.

Addendum No. 01
ID 6350-01-62
ID 6350-07-77
ID 6350-07-87
ID 6350-07-88
Revised Sheet 347
February 29, 2016

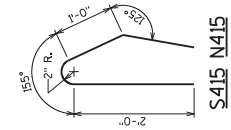
ROUTE OUT 1/4" X 3/8" DEEP AT JOINT
WITH 1/2" DIA. WIRE MESH OR REBAR.
(INCIDENTAL TO "CONCRETE MASONRY OVERLAY DECKS")



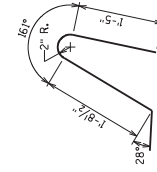
OPTIONAL LONGITUDINAL
CONSTRUCTION JOINT DETAIL



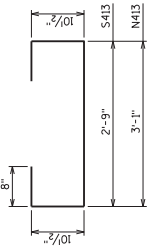
S414 N414



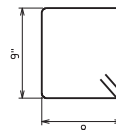
S415 N415



S416 N416



S413 N413



S401 N401

NO. DATE	REVISION	JPH	BY
1/2/08	REMOVED STAGING DETAILS	JPH	
STATE OF WISCONSIN DEPARTMENT OF TRANSPORTATION STRUCTURES DESIGN SECTION			
DRAWN BY: JPH		PRANS COO: ENIK	
STRUCTURE B-71-39			SHEET 4
BAR DETAILS			347

William C. Decker
2/22/16

STATE PROJECT NUMBER

6350-01-62

GENERAL NOTES

ONE FIELD SPlice PERMITTED IN STEEL EXTRUSIONS, UNLESS MORE ARE REQUIRED... DETAILS SHALL BE SUBMITTED FOR APPROVAL...

AFTER FABRICATION, BUT BEFORE SHIPMENT, STRAIGHTEN STEEL EXTRUSIONS SUCH THAT THEY SHALL BE FREE FROM WARP, TWIST & SNEEP.

FABRICATOR SHALL PROVIDE MEANS OF KEEPING GALVANIZED EXTRUSIONS CLEAN & SMOOTH DURING SHIPMENT AND PRIOR TO APPLYING LUBRICANT ADHESIVE FOR NEOPRENE GLAND INSTALLATION.

SANDBLAST PLATES & EXTRUSIONS AFTER FABRICATION IN ACCORDANCE WITH SSPC SP. 16 "COMMERCIAL BLAST CLEANING". AFTER BLAST CLEANING THE PLATES & EXTRUSIONS SHALL BE HOT DIPPED GALVANIZED.

STRIP SEAL EXPANSION JOINT ASSEMBLY, INCLUDING ANCHOR STUDS & HARDWARE WILL BE PAID FOR AT THE LUMP SUM PRICE BID FOR "EXPANSION DEVICE B-71-39".

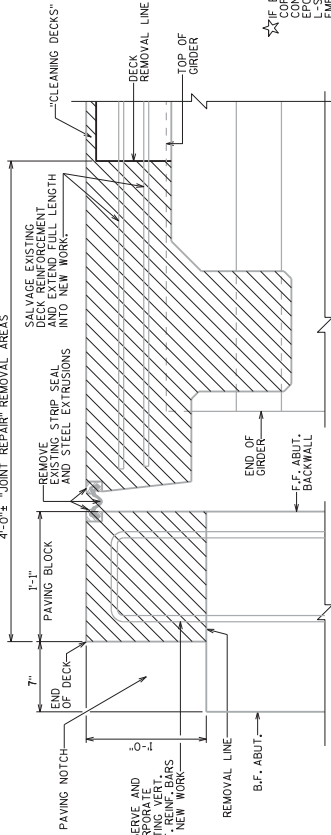
IF EXISTING BARS ARE SEVERELY CORRODED OR DAMAGED DURING CONCRETE REMOVAL, ALL REBAR WITH L-SHAPED BARS WITH A 10" HORIZ. LEG. EMBED BARS 7" MIN. INTO EXISTING CONC. PLACE 4" CL. MIN. OF VERT. CONC. FACE. WORK TO BE PAID FOR UNDER BID ITEM "JOINT REPAIR".

LEGEND

- 1 NEOPRENE STRIP SEAL (4 INCH & STEEL EXTRUSIONS.
2 STUDS 3/8" X 6 3/4" LONG AT 6" ALTERNATE CENTERS. WELD TO EXTRUSIONS & BEND AS SHOWN AFTER WELDING.
2A 1/2" THICK ANCHOR PLATE WITH 3/8" ROD (OR ALTERNATE STEEL ANCHOR) WELD TO ANCHOR STUD. ANCHOR PLATE TO NO. 1 AT 1" & 6" CENTERS BETWEEN ORDERS.
3 3/4" THREADED ROD WITH 2 NUTS AND PLATE WASHERS. GROUT ON ABUTMENT SIDE GROUT THREADED ROD INTO FIELD DRILLED HOLES IN ABUTMENT BACKWALL AS SHOWN.
4 3/4" THREADED ROD WITH NUT. TACK WELD NUT TO NO. 5.
5 FABRICATE SUPPORT FROM 3" X 1/2" BAR AS SHOWN OR EQUIVALENT. DRILLED HOLES TO COVER WELDED AREAS WITH EPOXY COATING MATERIAL. PROVIDE 1/2" HOLE FOR NO. 3 & 1" HOLE FOR NO. 4.

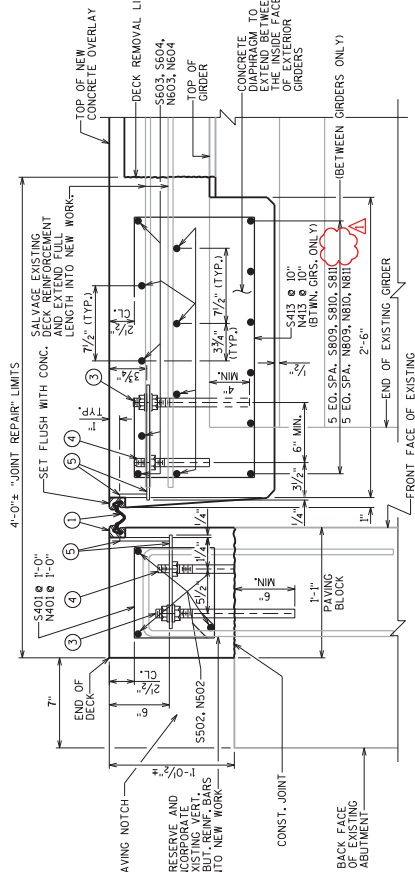
Addendum No. 01
ID 6350-01-62
ID 6350-07-77
ID 6350-07-87
ID 6350-07-88
Revised Sheet 348
February 29, 2016

Table with columns: NO., DATE, REVISION, STAGING DETAILS, JPH, REVISION, BY. Includes drawing info: STATE OF WISCONSIN DEPARTMENT OF TRANSPORTATION STRUCTURES DESIGN SECTION, STRUCTURE B-71-39, DRAWN BY JPH, CHECKED BY ENIK, SHEET 5 OF 5, EXPANSION DEVICE, 348.



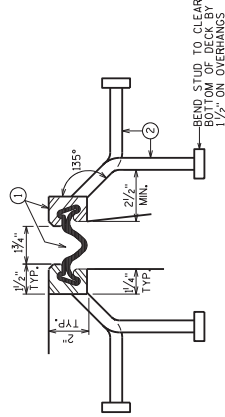
SECTION THRU EXISTING EXPANSION JOINTS AT BOTH ABUTMENTS

SHOWING REMOVAL AREAS - NORMAL TO C/BRG. ABUTMENTS



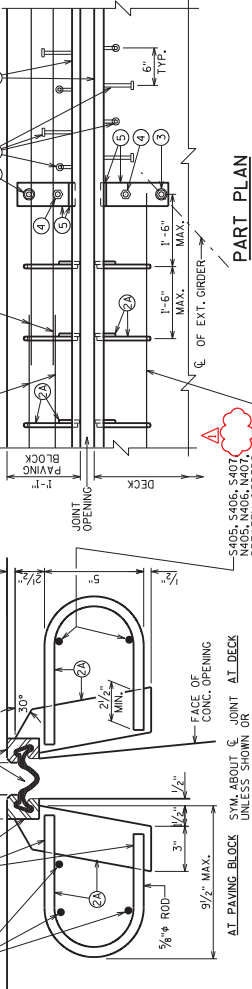
SECTION THRU NEW EXPANSION JOINTS AT BOTH ABUTMENTS

NORMAL TO C/BRG. ABUTMENTS



SECTION THRU JOINT

EXTERIOR ORDER TO EDGE OF DECK & AT PARAPETS



PART PLAN

SECTION THRU JOINT

ROADWAY TRAFFIC AREA BETWEEN EXTERIOR ORDERS.

ALTERNATE STRIP SEAL ANCHOR

Signature: William C. Decker
Date: 2/22/16

Addendum No. 01
ID 6350-01-62
ID 6350-07-77
ID 6350-07-87
ID 6350-07-88
Revised Sheet 351
February 29, 2016

Deleted - Not part
of this Contract

SCHOOL AVENUE

STATION	END AREA		VOLUME		CUMULATIVE VOLUME		EXP Fact=	MASS HAUL (CY)
	CUT (SF)	FILL (SF)	CUT (CY)	FILL (CY)	CUT (CY)	FILL (CY)		
70+17	181	0	0	128	0	128	0	129
70+41	107.4	0	38	0	166	0	166	166
70+80	103.9	0.1	38	0	205	0	205	204
70+75	33.9	18	66	1	272	1	272	272
71+00	38.1	0	66	1	312	2	312	310

NORTH ROAD

STATION	END AREA		VOLUME		CUMULATIVE VOLUME		EXP Fact=	MASS HAUL (CY)
	CUT (SF)	FILL (SF)	CUT (CY)	FILL (CY)	CUT (CY)	FILL (CY)		
45+76	38.4	0.2	33	8	33	8	8	25
46+00	32.1	12.4	30	35	63	42	42	40
46+50	21.4	16.6	22	104	104	150	150	-47
47+00	2	73.1	128	105	128	276	276	-171
47+31	0.4	95.4	0	80	105	356	356	-251
47+50	0	79.6	0	58	105	412	412	-307
47+60	0	151.5	0	269	106	681	681	-575
48+00	0.8	127.6	0	23	123	795	795	-640
48+02	54.5	50.9	53	95	176	890	890	-735
48+32	5.5	58.9	12	15	188	905	905	-649
RR CROSSING								
48+40	73.8	5.3	25	2	165	792	792	-627
48+52	73.8	5.3	52	10	217	803	803	-585
48+75	49	13.6	41	44	258	846	846	-588
49+00	38.7	58.9	41	44	299	890	890	-588
49+37	178.3	0	148	52	406	898	898	-492
CTHP								
49+46	93.8	0	195	3	601	903	903	-301
49+46	33	4	0	0	601	903	903	-301
50+25	85.2	0.9	29	1	629	903	903	-274
50+32	88.2	0.6	22	0	652	903	903	-252
50+40	93.3	0.4	27	0	675	904	904	-225

CONNER STREET

STATION	END AREA		VOLUME		CUMULATIVE VOLUME		EXP Fact=	MASS HAUL (CY)
	CUT (SF)	FILL (SF)	CUT (CY)	FILL (CY)	CUT (CY)	FILL (CY)		
100+20	69.6	0	0	0	0	0	0	63
100+25	44.1	0	0	0	0	0	0	190
100+50	91.7	0	43	0	43	0	0	232
101+00	48.5	2.5	130	3	173	3	3	272
101+25	47.2	0.7	44	2	217	5	5	283
101+50	43.1	3.1	42	2	259	7	7	310
101+64	45.4	0.2	23	1	302	8	8	369
101+75	44.7	4.6	18	5	320	10	10	394
102+00	56.5	2.9	46	4	366	15	15	394
102+25	53.6	2.4	46	4	413	19	19	

MARSHFIELD STREET

STATION	END AREA		VOLUME		CUMULATIVE VOLUME		EXP Fact=	MASS HAUL (CY)
	CUT (SF)	FILL (SF)	CUT (CY)	FILL (CY)	CUT (CY)	FILL (CY)		
107+25	2.1	1.5	2	4	2	4	4	-2
107+50	4.8	4.2	1	6	3	10	10	52
108+00	64.7	0.2	64	1	67	11	11	175
109+00	69.5	0.2	124	1	191	12	12	342
109+50	87.4	0.1	144	0	335	12	12	492
110+00	99.5	0.7	173	1	508	13	13	681
110+50	120.0	2.2	202	3	710	16	16	928
111+00	144.9	5.2	244	6	954	22	22	1259
111+50	219.3	0.0	337	0	1291	22	22	1698
112+00	224.6	11.6	355	64	1646	86	86	2045
112+50	278.9	11.2	486	21	2132	107	107	2584
113+00	335.6	12.0	667	21	2799	128	128	3017
113+50	160.5	8.2	458	24	3257	152	152	3279
114+00	134.0	0.9	273	1	3530	153	153	3526
114+50	133.8	0.0	248	0	3778	153	153	3781
115+00	141.1	0.0	255	0	4033	153	153	4033
115+50	163.8	0.5	215	1	4248	154	154	4245
116+00	163.5	0.5	210	1	4458	154	154	4294
116+50	122.5	48.7	210	60	4668	214	214	4709
117+00	281.9	0.2	374	60	5042	274	274	5316
117+50	467.6	72.1	694	81	5736	355	355	6118
118+00	577.6	65.2	868	165	6604	520	520	6475
118+30	220.4	48.7	437	81	7141	599	599	6532
118+73	1.0	65.8	118	118	7312	717	717	
CTH-P								
119+01	200.3	0.0	678	56	7990	773	773	836
119+05	233	35.8	527	76	8517	849	849	912
120+50	240.8	22.0	232	14	8750	926	926	7824
120+76	235.0	0.1	195	4	8945	930	930	8015
121+00	209.1	7.1	177	7	9122	937	937	8165
121+20	260.5	7.1	233	8	9355	945	945	8410
121+50	164.9	4.4	283	1	9638	954	954	8662
122+00	140.9	5.1	282	3	9920	957	957	8806
122+23	154.7	0.4	127	0	10047	957	957	8976
122+50	125.0	26.1	116	11	10163	968	968	9151
122+66	146.8	0.0	98	11	10261	979	979	9321
123+00	123.8	4.2	73	1	10334	980	980	9491
123+50	121.0	5.0	227	1	10561	981	981	9378
124+00	116.8	8.3	224	11	10785	992	992	9582
124+21	107.1	12.0	87	11	10872	1003	1003	9659
124+56	215.0	0.0	211	11	10883	1014	1014	9860

CTH-M

STATION	END AREA		VOLUME		CUMULATIVE VOLUME		EXP Fact=	MASS HAUL (CY)
	CUT (SF)	FILL (SF)	CUT (CY)	FILL (CY)	CUT (CY)	FILL (CY)		
10+31	188.4	0	38	33	38	33	63	255
11+00	60.2	0	109	46	147	79	109	318
11+50	57.8	0	113	0	260	79	109	431
12+00	64.4	0	60	2	320	81	111	489
12+27	55.5	3.5	28	5	348	86	117	511
12+50	11.3	6.9	8	5	356	91	124	500
13+00	5.7	0	2	3	358	94	127	499

SHARED-USE PATH GRADING

STATION	END AREA		VOLUME		CUMULATIVE VOLUME		EXP Fact=	MASS HAUL (CY)
	CUT (SF)	FILL (SF)	CUT (CY)	FILL (CY)	CUT (CY)	FILL (CY)		
21+00	38.5	0	18	5	18	5	5	23
21+25	67.4	1.9	46	46	64	51	51	-4
21+50	163	0	125	3	189	54	54	166
21+75	0	141.7	0	28	189	82	82	-111
21+79	0	141.7	0	28	189	110	110	-137
22+00	2.9	0	1	72	191	182	182	-207
22+08	3	0	1	0	192	182	182	-207

PROJECT NO: 6350-07-77, 88

HWY: CTH P

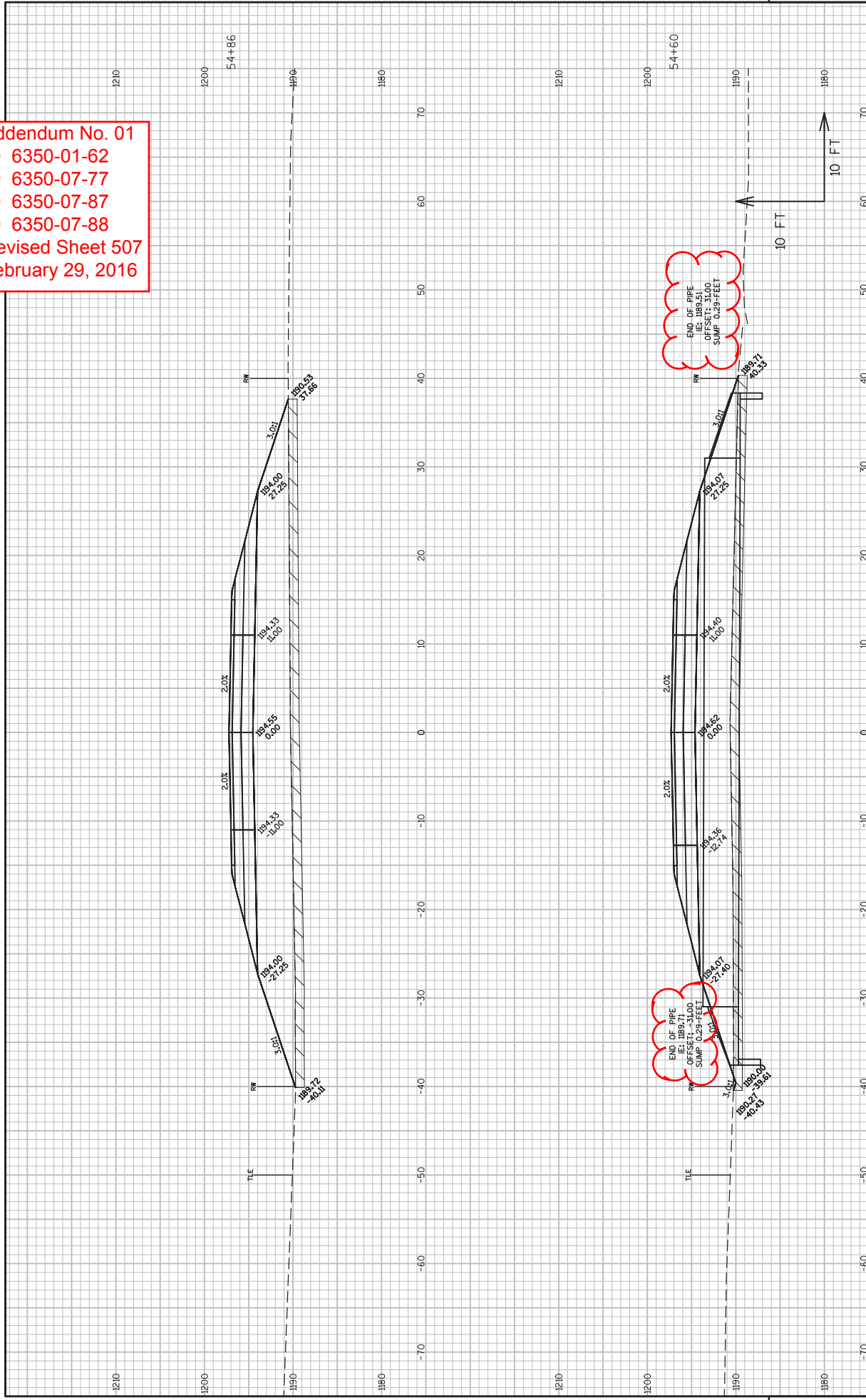
COUNTY: WOOD

EARTHWORK TABULATIONS

SHEET 351

E

Addendum No. 01
 ID 6350-01-62
 ID 6350-07-77
 ID 6350-07-87
 ID 6350-07-88
 Revised Sheet 507
 February 29, 2016



SCHEDULE OF ITEMS

REVISED:

CONTRACT:	PROJECT(S):	FEDERAL ID(S):
20160308027	6350-01-62	WISC 2016074
	6350-07-77	WISC 2016069
	6350-07-87	N/A
	6350-07-88	WISC 2016070

CONTRACTOR : _____

LINE NO	ITEM DESCRIPTION	APPROX. QUANTITY AND UNITS	UNIT PRICE		BID AMOUNT	
			DOLLARS	CTS	DOLLARS	CTS

SECTION 0001 Contract Items

0010	201.0205 Grubbing	41.000 STA
0020	201.0220 Grubbing	152.000 ID
0030	203.0100 Removing Small Pipe Culverts	23.000 EACH
0040	203.0225.S Debris Containment (structure) 01. B-71-39	LUMP	LUMP	.	.	.
0050	204.0100 Removing Pavement	26,332.000 SY
0060	204.0120 Removing Asphaltic Surface Milling	3,890.000 SY
0070	204.0150 Removing Curb & Gutter	5,494.000 LF
0080	204.0155 Removing Concrete Sidewalk	285.000 SY
0090	204.0165 Removing Guardrail	2,267.000 LF

SCHEDULE OF ITEMS

REVISED:

CONTRACT:	PROJECT(S):	FEDERAL ID(S):
20160308027	6350-01-62	WISC 2016074
	6350-07-77	WISC 2016069
	6350-07-87	N/A
	6350-07-88	WISC 2016070

CONTRACTOR : _____

LINE NO	ITEM DESCRIPTION	APPROX. QUANTITY AND UNITS	UNIT PRICE		BID AMOUNT	
			DOLLARS	CTS	DOLLARS	CTS
0100	204.0170 Removing Fence	945.000 LF	.		.	
0110	204.0195 Removing Concrete Bases	29.000 EACH	.		.	
0120	204.0210 Removing Manholes	18.000 EACH	.		.	
0130	204.0220 Removing Inlets	18.000 EACH	.		.	
0140	204.0245 Removing Storm Sewer (size) 01. 6-Inch	36.000 LF	.		.	
0150	204.0245 Removing Storm Sewer (size) 02. 12-Inch	560.000 LF	.		.	
0160	204.0245 Removing Storm Sewer (size) 03. 15-Inch	67.000 LF	.		.	
0170	204.0245 Removing Storm Sewer (size) 04. 18-Inch	270.000 LF	.		.	
0180	204.0245 Removing Storm Sewer (size) 05. 24-Inch	961.000 LF	.		.	
0190	205.0100 Excavation Common	57,912.000 CY	.		.	

SCHEDULE OF ITEMS

REVISED:

CONTRACT:	PROJECT(S):	FEDERAL ID(S):
20160308027	6350-01-62	WISC 2016074
	6350-07-77	WISC 2016069
	6350-07-87	N/A
	6350-07-88	WISC 2016070

CONTRACTOR : _____

LINE NO	ITEM DESCRIPTION	APPROX. QUANTITY AND UNITS	UNIT PRICE		BID AMOUNT	
			DOLLARS	CTS	DOLLARS	CTS
0200	205.0400 Excavation Marsh	2,965.000 CY
0210	205.0501.S Excavation, Hauling, and Disposal of Petroleum Contaminated Soil	1,470.000 TON
0220	208.0100 Borrow	28,431.000 CY
0230	208.1100 Select Borrow	1,427.000 CY
0240	213.0100 Finishing Roadway (project) 01. 6350-07-77	1.000 EACH
0250	213.0100 Finishing Roadway (project) 02. 6350-07-88	1.000 EACH
0260	214.0100 Obliterating Old Road	15.000 STA
0270	305.0110 Base Aggregate Dense 3/4-Inch	4,661.000 TON
0280	305.0120 Base Aggregate Dense 1 1/4-Inch	56,838.000 TON
0290	305.0500 Shaping Shoulders	32.000 STA

SCHEDULE OF ITEMS

REVISED:

CONTRACT:
20160308027PROJECT(S):
6350-01-62
6350-07-77
6350-07-87
6350-07-88FEDERAL ID(S):
WISC 2016074
WISC 2016069
N/A
WISC 2016070

CONTRACTOR : _____

LINE NO	ITEM DESCRIPTION	APPROX. QUANTITY AND UNITS	UNIT PRICE		BID AMOUNT	
			DOLLARS	CTS	DOLLARS	CTS
0300	312.0110 Select Crushed Material	56,256.000 TON	.		.	
0310	371.1000.S QMP Base Aggregate Dense 1 1/4-Inch Compaction	56,816.000 TON	.		.	
0320	415.0080 Concrete Pavement 8-Inch	5.000 SY	.		.	
0330	415.0410 Concrete Pavement Approach Slab	367.000 SY	.		.	
0340	416.0160 Concrete Driveway 6-Inch	1,494.000 SY	.		.	
0350	416.0610 Drilled Tie Bars	61.000 EACH	.		.	
0360	416.1010 Concrete Surface Drains	7.000 CY	.		.	
0370	440.4410 Incentive IRI Ride	16,100.000 DOL	1.00000		16100.00	
0380	455.0105 Asphaltic Material PG58-28	420.000 TON	.		.	
0390	455.0122 Asphaltic Material PG64-34	0.500 TON	.		.	

SCHEDULE OF ITEMS

REVISED:

CONTRACT:
20160308027PROJECT(S):
6350-01-62
6350-07-77
6350-07-87
6350-07-88FEDERAL ID(S):
WISC 2016074
WISC 2016069
N/A
WISC 2016070

CONTRACTOR : _____

LINE NO	ITEM DESCRIPTION	APPROX. QUANTITY AND UNITS	UNIT PRICE		BID AMOUNT	
			DOLLARS	CTS	DOLLARS	CTS
0400	455.0145 Asphaltic Material PG64-34P	658.000 TON
0410	455.0605 Tack Coat	4,259.000 GAL
0420	460.1101 HMA Pavement Type E-1	19,627.000 TON
0430	460.2000 Incentive Density HMA Pavement	12,550.000 DOL	1.00000	.	12550.00	.
0440	460.4000 HMA Cold Weather Paving	741.000 TON
0450	460.4110.S Reheating HMA Pavement Longitudinal Joints	29,871.000 LF
0460	465.0105 Asphaltic Surface	110.000 TON
0470	465.0315 Asphaltic Flumes	130.000 SY
0480	502.3100 Expansion Device (structure) 01. B-71-39	LUMP	LUMP	.	.	.
0490	502.3200 Protective Surface Treatment	1,056.000 SY

SCHEDULE OF ITEMS

REVISED:

CONTRACT:
20160308027PROJECT(S):
6350-01-62
6350-07-77
6350-07-87
6350-07-88FEDERAL ID(S):
WISC 2016074
WISC 2016069
N/A
WISC 2016070

CONTRACTOR : _____

LINE NO	ITEM DESCRIPTION	APPROX. QUANTITY AND UNITS	UNIT PRICE		BID AMOUNT	
			DOLLARS	CTS	DOLLARS	CTS
0500	502.3210 Pigmented Surface Sealer	244.000 SY	.		.	
0510	502.6500 Protective Coating Clear	3.000 GAL	.		.	
0520	504.0900 Concrete Masonry Endwalls	54.600 CY	.		.	
0530	505.0600 Bar Steel Reinforcement HS Coated Structures	5,330.000 LB	.		.	
0580	509.0301 Preparation Decks Type 1	120.000 SY	.		.	
0590	509.0302 Preparation Decks Type 2	60.000 SY	.		.	
0600	509.0500 Cleaning Decks	1,056.000 SY	.		.	
0610	509.1000 Joint Repair	65.000 SY	.		.	
0620	509.1500 Concrete Surface Repair	110.000 SF	.		.	
0630	509.2000 Full-Depth Deck Repair	1.000 SY	.		.	

SCHEDULE OF ITEMS

REVISED:

CONTRACT:
20160308027PROJECT(S):
6350-01-62
6350-07-77
6350-07-87
6350-07-88FEDERAL ID(S):
WISC 2016074
WISC 2016069
N/A
WISC 2016070

CONTRACTOR : _____

LINE NO	ITEM DESCRIPTION	APPROX. QUANTITY AND UNITS	UNIT PRICE		BID AMOUNT	
			DOLLARS	CTS	DOLLARS	CTS
0640	509.2500 Concrete Masonry Overlay Decks	93.000 CY
0650	509.9050.S Cleaning Parapets	456.000 LF
0660	520.8000 Concrete Collars for Pipe	23.000 EACH
0670	520.9700.S Culvert Pipe Liners (size) 01. 24-Inch	70.000 LF
0680	520.9700.S Culvert Pipe Liners (size) 02. 48-Inch	68.000 LF
0690	520.9750.S Cleaning Culvert Pipes for Liner Verification	2.000 EACH
0700	521.0118 Culvert Pipe Corrugated Steel 18-Inch	602.000 LF
0710	521.0124 Culvert Pipe Corrugated Steel 24-Inch	40.000 LF
0720	521.0130 Culvert Pipe Corrugated Steel 30-Inch	32.000 LF
0730	521.1012 Apron Endwalls for Culvert Pipe Steel 12-Inch	2.000 EACH

SCHEDULE OF ITEMS

REVISED:

CONTRACT:	PROJECT(S):	FEDERAL ID(S):
20160308027	6350-01-62	WISC 2016074
	6350-07-77	WISC 2016069
	6350-07-87	N/A
	6350-07-88	WISC 2016070

CONTRACTOR : _____

LINE NO	ITEM DESCRIPTION	APPROX. QUANTITY AND UNITS	UNIT PRICE		BID AMOUNT	
			DOLLARS	CTS	DOLLARS	CTS
0740	521.1018 Apron Endwalls for Culvert Pipe Steel 18-Inch	30.000 EACH
0750	521.1024 Apron Endwalls for Culvert Pipe Steel 24-Inch	2.000 EACH
0760	521.1030 Apron Endwalls for Culvert Pipe Steel 30-Inch	2.000 EACH
0770	522.0124 Culvert Pipe Reinforced Concrete Class III 24-Inch	214.000 LF
0780	522.0130 Culvert Pipe Reinforced Concrete Class III 30-Inch	88.000 LF
0790	522.0136 Culvert Pipe Reinforced Concrete Class III 36-Inch	48.000 LF
0800	522.0148 Culvert Pipe Reinforced Concrete Class III 48-Inch	192.000 LF
0810	522.1012 Apron Endwalls for Culvert Pipe Reinforced Concrete 12-Inch	7.000 EACH
0820	522.1015 Apron Endwalls for Culvert Pipe Reinforced Concrete 15-Inch	4.000 EACH

SCHEDULE OF ITEMS

REVISED:

CONTRACT:
20160308027PROJECT(S):
6350-01-62
6350-07-77
6350-07-87
6350-07-88FEDERAL ID(S):
WISC 2016074
WISC 2016069
N/A
WISC 2016070

CONTRACTOR : _____

LINE NO	ITEM DESCRIPTION	APPROX. QUANTITY AND UNITS	UNIT PRICE		BID AMOUNT	
			DOLLARS	CTS	DOLLARS	CTS
0830	522.1018 Apron Endwalls for Culvert Pipe Reinforced Concrete 18-Inch	EACH 3.000	.		.	
0840	522.1024 Apron Endwalls for Culvert Pipe Reinforced Concrete 24-Inch	EACH 9.000	.		.	
0850	522.1030 Apron Endwalls for Culvert Pipe Reinforced Concrete 30-Inch	EACH 2.000	.		.	
0860	522.1036 Apron Endwalls for Culvert Pipe Reinforced Concrete 36-Inch	EACH 2.000	.		.	
0870	523.0124 Culvert Pipe Reinforced Concrete Horizontal Elliptical Class HE-III 24x38-Inch	LF 140.000	.		.	
0880	523.0429 Culvert Pipe Reinforced Concrete Horizontal Elliptical Class HE-IV 29x45-Inch	LF 180.000	.		.	
0890	523.0519 Apron Endwalls for Culvert Pipe Reinforced Concrete Horizontal Elliptical 19x30-Inch	EACH 2.000	.		.	
0900	524.0624 Apron Endwalls for Culvert Pipe Salvaged 24-Inch	EACH 1.000	.		.	

SCHEDULE OF ITEMS

REVISED:

CONTRACT:	PROJECT(S):	FEDERAL ID(S):
20160308027	6350-01-62	WISC 2016074
	6350-07-77	WISC 2016069
	6350-07-87	N/A
	6350-07-88	WISC 2016070

CONTRACTOR : _____

LINE NO	ITEM DESCRIPTION	APPROX. QUANTITY AND UNITS	UNIT PRICE		BID AMOUNT	
			DOLLARS	CTS	DOLLARS	CTS
0910	524.0636 Apron Endwalls for Culvert Pipe Salvaged 36-Inch	1.000 EACH	.		.	
0920	601.0407 Concrete Curb & Gutter 18-Inch Type D	99.000 LF	.		.	
0930	601.0409 Concrete Curb & Gutter 30-Inch Type A	54.000 LF	.		.	
0940	601.0411 Concrete Curb & Gutter 30-Inch Type D	8,289.000 LF	.		.	
0950	601.0557 Concrete Curb & Gutter 6-Inch Sloped 36-Inch Type D	1,441.000 LF	.		.	
0960	601.0600 Concrete Curb Pedestrian	27.000 LF	.		.	
0970	602.0405 Concrete Sidewalk 4-Inch	7,005.000 SF	.		.	
0980	602.0410 Concrete Sidewalk 5-Inch	943.000 SF	.		.	
0990	602.0415 Concrete Sidewalk 6-Inch	1,028.000 SF	.		.	
1000	602.0505 Curb Ramp Detectable Warning Field Yellow	152.000 SF	.		.	

SCHEDULE OF ITEMS

REVISED:

CONTRACT:	PROJECT(S):	FEDERAL ID(S):
20160308027	6350-01-62	WISC 2016074
	6350-07-77	WISC 2016069
	6350-07-87	N/A
	6350-07-88	WISC 2016070

CONTRACTOR : _____

LINE NO	ITEM DESCRIPTION	APPROX. QUANTITY AND UNITS	UNIT PRICE		BID AMOUNT	
			DOLLARS	CTS	DOLLARS	CTS
1010	606.0200 Riprap Medium	276.000 CY	.		.	
1020	608.0312 Storm Sewer Pipe Reinforced Concrete Class III 12-Inch	558.000 LF	.		.	
1030	608.0315 Storm Sewer Pipe Reinforced Concrete Class III 15-Inch	376.000 LF	.		.	
1040	608.0318 Storm Sewer Pipe Reinforced Concrete Class III 18-Inch	599.000 LF	.		.	
1050	608.0324 Storm Sewer Pipe Reinforced Concrete Class III 24-Inch	1,457.000 LF	.		.	
1060	608.0336 Storm Sewer Pipe Reinforced Concrete Class III 36-Inch	8.000 LF	.		.	
1070	608.0412 Storm Sewer Pipe Reinforced Concrete Class IV 12-Inch	215.000 LF	.		.	
1080	608.0415 Storm Sewer Pipe Reinforced Concrete Class IV 15-Inch	46.000 LF	.		.	
1090	608.0418 Storm Sewer Pipe Reinforced Concrete Class IV 18-Inch	120.000 LF	.		.	
1100	610.0119 Storm Sewer Pipe Reinforced Concrete Horizontal Elliptical Class HE-III 19x30-Inch	414.000 LF	.		.	

SCHEDULE OF ITEMS

REVISED:

CONTRACT:
20160308027PROJECT(S):
6350-01-62
6350-07-77
6350-07-87
6350-07-88FEDERAL ID(S):
WISC 2016074
WISC 2016069
N/A
WISC 2016070

CONTRACTOR : _____

LINE NO	ITEM DESCRIPTION	APPROX. QUANTITY AND UNITS	UNIT PRICE		BID AMOUNT	
			DOLLARS	CTS	DOLLARS	CTS
1110	610.0419 Storm Sewer Pipe Reinforced Concrete Horizontal Elliptical Class HE-IV 19x30-Inch	35.000 LF
1120	611.0430 Reconstructing Inlets	2.000 EACH
1130	611.0530 Manhole Covers Type J	9.000 EACH
1140	611.0612 Inlet Covers Type C	2.000 EACH
1150	611.0624 Inlet Covers Type H	35.000 EACH
1160	611.0636 Inlet Covers Type HM-S	1.000 EACH
1170	611.0639 Inlet Covers Type H-S	8.000 EACH
1180	611.0645 Inlet Covers Type MS-A	6.000 EACH
1190	611.0654 Inlet Covers Type V	2.000 EACH
1200	611.1004 Catch Basins 4-FT Diameter	6.000 EACH

SCHEDULE OF ITEMS

REVISED:

CONTRACT:
20160308027PROJECT(S):
6350-01-62
6350-07-77
6350-07-87
6350-07-88FEDERAL ID(S):
WISC 2016074
WISC 2016069
N/A
WISC 2016070

CONTRACTOR : _____

LINE NO	ITEM DESCRIPTION	APPROX. QUANTITY AND UNITS	UNIT PRICE		BID AMOUNT	
			DOLLARS	CTS	DOLLARS	CTS
1210	611.1005 Catch Basins 5-FT Diameter	3.000 EACH	.		.	
1220	611.1006 Catch Basins 6-FT Diameter	4.000 EACH	.		.	
1230	611.1230 Catch Basins 2x3-FT	8.000 EACH	.		.	
1240	611.2004 Manholes 4-FT Diameter	16.000 EACH	.		.	
1250	611.2005 Manholes 5-FT Diameter	2.000 EACH	.		.	
1260	611.3003 Inlets 3-FT Diameter	3.000 EACH	.		.	
1270	611.3220 Inlets 2x2-FT	2.000 EACH	.		.	
1280	611.3230 Inlets 2x3-FT	8.000 EACH	.		.	
1290	611.3901 Inlets Median 1 Grate	6.000 EACH	.		.	
1300	611.8120.S Cover Plates Temporary	7.000 EACH	.		.	

SCHEDULE OF ITEMS

REVISED:

CONTRACT:	PROJECT(S):	FEDERAL ID(S):
20160308027	6350-01-62	WISC 2016074
	6350-07-77	WISC 2016069
	6350-07-87	N/A
	6350-07-88	WISC 2016070

CONTRACTOR : _____

LINE NO	ITEM DESCRIPTION	APPROX. QUANTITY AND UNITS	UNIT PRICE		BID AMOUNT	
			DOLLARS	CTS	DOLLARS	CTS
1310	611.9800.S Pipe Grates	8.000 EACH	.		.	
1320	612.0106 Pipe Underdrain 6-Inch	12,534.000 LF	.		.	
1330	612.0206 Pipe Underdrain Unperforated 6-Inch	390.000 LF	.		.	
1340	612.0212 Pipe Underdrain Unperforated 12-Inch	140.000 LF	.		.	
1350	612.0806 Apron Endwalls for Underdrain Reinforced Concrete 6-Inch	17.000 EACH	.		.	
1360	614.2300 MGS Guardrail 3	125.000 LF	.		.	
1370	614.2500 MGS Thrie Beam Transition	157.600 LF	.		.	
1380	614.2610 MGS Guardrail Terminal EAT	4.000 EACH	.		.	
1390	616.0800.S Fence Track Clearance	830.000 LF	.		.	
1400	618.0100 Maintenance And Repair of Haul Roads (project) 01. 6350-07-77	1.000 EACH	.		.	

SCHEDULE OF ITEMS

REVISED:

CONTRACT:
20160308027PROJECT(S):
6350-01-62
6350-07-77
6350-07-87
6350-07-88FEDERAL ID(S):
WISC 2016074
WISC 2016069
N/A
WISC 2016070

CONTRACTOR : _____

LINE NO	ITEM DESCRIPTION	APPROX. QUANTITY AND UNITS	UNIT PRICE		BID AMOUNT	
			DOLLARS	CTS	DOLLARS	CTS
1410	618.0100 Maintenance And Repair of Haul Roads (project) 02. 6350-07-88	1.000 EACH
1420	619.1000 Mobilization	1.000 EACH
1430	620.0300 Concrete Median Sloped Nose	312.000 SF
1440	623.0200 Dust Control Surface Treatment	55,373.000 SY
1450	624.0100 Water	708.790 MGAL
1460	625.0500 Salvaged Topsoil	111,862.000 SY
1470	627.0200 Mulching	41,231.000 SY
1480	628.1504 Silt Fence	16,717.000 LF
1490	628.1520 Silt Fence Maintenance	16,717.000 LF
1500	628.1905 Mobilizations Erosion Control	7.000 EACH

SCHEDULE OF ITEMS

REVISED:

CONTRACT:	PROJECT(S):	FEDERAL ID(S):
20160308027	6350-01-62	WISC 2016074
	6350-07-77	WISC 2016069
	6350-07-87	N/A
	6350-07-88	WISC 2016070

CONTRACTOR : _____

LINE NO	ITEM DESCRIPTION	APPROX. QUANTITY AND UNITS	UNIT PRICE		BID AMOUNT	
			DOLLARS	CTS	DOLLARS	CTS
1510	628.1910 Mobilizations Emergency Erosion Control	16.000 EACH
1520	628.2002 Erosion Mat Class I Type A	14,778.000 SY
1530	628.2004 Erosion Mat Class I Type B	27,015.000 SY
1540	628.2006 Erosion Mat Urban Class I Type A	22,713.000 SY
1550	628.7005 Inlet Protection Type A	69.000 EACH
1560	628.7010 Inlet Protection Type B	16.000 EACH
1570	628.7015 Inlet Protection Type C	53.000 EACH
1580	628.7504 Temporary Ditch Checks	1,626.000 LF
1590	628.7555 Culvert Pipe Checks	195.000 EACH
1600	628.7560 Tracking Pads	2.000 EACH

SCHEDULE OF ITEMS

REVISED:

CONTRACT:
20160308027PROJECT(S):
6350-01-62
6350-07-77
6350-07-87
6350-07-88FEDERAL ID(S):
WISC 2016074
WISC 2016069
N/A
WISC 2016070

CONTRACTOR : _____

LINE NO	ITEM DESCRIPTION	APPROX. QUANTITY AND UNITS	UNIT PRICE		BID AMOUNT	
			DOLLARS	CTS	DOLLARS	CTS
1610	628.7570 Rock Bags	250.000 EACH	.		.	
1620	629.0210 Fertilizer Type B	54.300 CWT	.		.	
1630	630.0110 Seeding Mixture No. 10	420.000 LB	.		.	
1640	630.0130 Seeding Mixture No. 30	861.000 LB	.		.	
1650	630.0140 Seeding Mixture No. 40	723.000 LB	.		.	
1660	630.0200 Seeding Temporary	2,398.000 LB	.		.	
1670	633.5200 Markers Culvert End	39.000 EACH	.		.	
1680	634.0612 Posts Wood 4x6-Inch X 12-FT	17.000 EACH	.		.	
1690	634.0614 Posts Wood 4x6-Inch X 14-FT	123.000 EACH	.		.	
1700	634.0616 Posts Wood 4x6-Inch X 16-FT	31.000 EACH	.		.	

SCHEDULE OF ITEMS

REVISED:

CONTRACT:
20160308027PROJECT(S):
6350-01-62
6350-07-77
6350-07-87
6350-07-88FEDERAL ID(S):
WISC 2016074
WISC 2016069
N/A
WISC 2016070

CONTRACTOR : _____

LINE NO	ITEM DESCRIPTION	APPROX. QUANTITY AND UNITS	UNIT PRICE		BID AMOUNT	
			DOLLARS	CTS	DOLLARS	CTS
1710	634.0618 Posts Wood 4x6-Inch X 18-FT	1.000 EACH	.		.	
1720	637.2210 Signs Type II Reflective H	711.590 SF	.		.	
1730	637.2220 Signs Type II Reflective SH	13.500 SF	.		.	
1740	637.2230 Signs Type II Reflective F	325.680 SF	.		.	
1750	638.2602 Removing Signs Type II	105.000 EACH	.		.	
1760	638.3000 Removing Small Sign Supports	106.000 EACH	.		.	
1770	642.5201 Field Office Type C	1.000 EACH	.		.	
1780	643.0100 Traffic Control (project) 01. 6350-07-77	1.000 EACH	.		.	
1790	643.0100 Traffic Control (project) 02. 6350-07-88	1.000 EACH	.		.	
1800	643.0300 Traffic Control Drums	7,830.000 DAY	.		.	

SCHEDULE OF ITEMS

REVISED:

CONTRACT:	PROJECT(S):	FEDERAL ID(S):
20160308027	6350-01-62	WISC 2016074
	6350-07-77	WISC 2016069
	6350-07-87	N/A
	6350-07-88	WISC 2016070

CONTRACTOR : _____

LINE NO	ITEM DESCRIPTION	APPROX. QUANTITY AND UNITS	UNIT PRICE		BID AMOUNT	
			DOLLARS	CTS	DOLLARS	CTS
1810	643.0410 Traffic Control Barricades Type II	498.000 DAY
1820	643.0420 Traffic Control Barricades Type III	3,160.000 DAY
1830	643.0705 Traffic Control Warning Lights Type A	4,544.000 DAY
1840	643.0715 Traffic Control Warning Lights Type C	400.000 DAY
1850	643.0900 Traffic Control Signs	4,417.000 DAY
1860	644.1420.S Temporary Pedestrian Surface Plywood	640.000 SF
1870	644.1601.S Temporary Curb Ramp	7.000 EACH
1880	645.0112 Geotextile Fabric Type DF Schedule B	5,588.000 SY
1890	645.0120 Geotextile Fabric Type HR	852.000 SY
1900	646.0106 Pavement Marking Epoxy 4-Inch	64,645.000 LF

SCHEDULE OF ITEMS

REVISED:

CONTRACT:	PROJECT(S):	FEDERAL ID(S):
20160308027	6350-01-62	WISC 2016074
	6350-07-77	WISC 2016069
	6350-07-87	N/A
	6350-07-88	WISC 2016070

CONTRACTOR : _____

LINE NO	ITEM DESCRIPTION	APPROX. QUANTITY AND UNITS	UNIT PRICE		BID AMOUNT	
			DOLLARS	CTS	DOLLARS	CTS
1910	646.0126 Pavement Marking Epoxy 8-Inch	1,101.000 LF	.		.	
1920	647.0110 Pavement Marking Railroad Crossings Epoxy	2.000 EACH	.		.	
1930	647.0166 Pavement Marking Arrows Epoxy Type 2	10.000 EACH	.		.	
1940	647.0206 Pavement Marking Arrows Bike Lane Epoxy	10.000 EACH	.		.	
1950	647.0306 Pavement Marking Symbols Bike Lane Epoxy	10.000 EACH	.		.	
1960	647.0356 Pavement Marking Words Epoxy	5.000 EACH	.		.	
1970	647.0456 Pavement Marking Curb Epoxy	110.000 LF	.		.	
1980	647.0566 Pavement Marking Stop Line Epoxy 18-Inch	315.000 LF	.		.	
1990	647.0606 Pavement Marking Island Nose Epoxy	5.000 EACH	.		.	
2000	647.0736 Pavement Marking Diagonal Epoxy 18-Inch	15.000 LF	.		.	

SCHEDULE OF ITEMS

REVISED:

CONTRACT:	PROJECT(S):	FEDERAL ID(S):
20160308027	6350-01-62	WISC 2016074
	6350-07-77	WISC 2016069
	6350-07-87	N/A
	6350-07-88	WISC 2016070

CONTRACTOR : _____

LINE NO	ITEM DESCRIPTION	APPROX. QUANTITY AND UNITS	UNIT PRICE		BID AMOUNT	
			DOLLARS	CTS	DOLLARS	CTS
2010	647.0766 Pavement Marking Crosswalk Epoxy 6-Inch	741.000 LF
2020	648.0100 Locating No-Passing Zones	2.000 MI
2030	650.4000 Construction Staking Storm Sewer	80.000 EACH
2040	650.4500 Construction Staking Subgrade	20,538.000 LF
2050	650.5000 Construction Staking Base	20,538.000 LF
2060	650.5500 Construction Staking Curb Gutter and Curb & Gutter	9,829.000 LF
2070	650.6000 Construction Staking Pipe Culverts	13.000 EACH
2080	650.7000 Construction Staking Concrete Pavement	72.000 LF
2090	650.8000 Construction Staking Resurfacing Reference	1,589.000 LF
2100	650.8500 Construction Staking Electrical Installations (project) 01. 6350-07-77	LUMP	LUMP	.	.	.

SCHEDULE OF ITEMS

REVISED:

CONTRACT:	PROJECT(S):	FEDERAL ID(S):
20160308027	6350-01-62	WISC 2016074
	6350-07-77	WISC 2016069
	6350-07-87	N/A
	6350-07-88	WISC 2016070

CONTRACTOR : _____

LINE NO	ITEM DESCRIPTION	APPROX. QUANTITY AND UNITS	UNIT PRICE		BID AMOUNT	
			DOLLARS	CTS	DOLLARS	CTS
2110	650.9910 Construction Staking Supplemental Control (project) 01. 6350-07-77	LUMP	LUMP			.
2120	650.9910 Construction Staking Supplemental Control (project) 02. 6350-07-88	LUMP	LUMP			.
2130	650.9920 Construction Staking Slope Stakes	20,700.000 LF		.		.
2140	652.0225 Conduit Rigid Nonmetallic Schedule 40 2-Inch	5,244.000 LF		.		.
2150	652.0325 Conduit Rigid Nonmetallic Schedule 80 2-Inch	535.000 LF		.		.
2160	653.0140 Pull Boxes Steel 24x42-Inch	4.000 EACH		.		.
2170	654.0106 Concrete Bases Type 6	29.000 EACH		.		.
2180	655.0610 Electrical Wire Lighting 12 AWG	4,176.000 LF		.		.
2190	655.0620 Electrical Wire Lighting 8 AWG	8,906.000 LF		.		.
2200	655.0625 Electrical Wire Lighting 6 AWG	7,660.000 LF		.		.

SCHEDULE OF ITEMS

REVISED:

CONTRACT:
20160308027PROJECT(S):
6350-01-62
6350-07-77
6350-07-87
6350-07-88FEDERAL ID(S):
WISC 2016074
WISC 2016069
N/A
WISC 2016070

CONTRACTOR : _____

LINE NO	ITEM DESCRIPTION	APPROX. QUANTITY AND UNITS	UNIT PRICE		BID AMOUNT	
			DOLLARS	CTS	DOLLARS	CTS
2210	655.0630 Electrical Wire Lighting 4 AWG	3,663.000 LF
2220	657.0255 Transformer Bases Breakaway 11 1/2-Inch Bolt Circle	29.000 EACH
2230	657.0327 Poles Type 6-Aluminum	29.000 EACH
2240	657.0705 Luminaire Arms Truss Type 4 1/2-Inch Clamp 10-FT	29.000 EACH
2250	659.1125 Luminaires Utility LED C	29.000 EACH
2260	690.0150 Sawing Asphalt	1,445.000 LF
2270	690.0250 Sawing Concrete	389.000 LF
2280	715.0415 Incentive Strength Concrete Pavement	500.000 DOL	1.00000		500.00	
2290	ASP.1T0A On-the-Job Training Apprentice at \$5.00/HR	2,400.000 HRS	5.00000		12000.00	
2300	ASP.1T0G On-the-Job Training Graduate at \$5.00/HR	1,980.000 HRS	5.00000		9900.00	

SCHEDULE OF ITEMS

REVISED:

CONTRACT:	PROJECT(S):	FEDERAL ID(S):
20160308027	6350-01-62	WISC 2016074
	6350-07-77	WISC 2016069
	6350-07-87	N/A
	6350-07-88	WISC 2016070

CONTRACTOR : _____

LINE NO	ITEM DESCRIPTION	APPROX. QUANTITY AND UNITS	UNIT PRICE		BID AMOUNT	
			DOLLARS	CTS	DOLLARS	CTS
2310	SPV.0030 Special 01. Fertilizer For Lawn Type Turf	17.700 CWT	.		.	
2320	SPV.0060 Special 01. Inlet Cover Type H Special	2.000 EACH	.		.	
2330	SPV.0060 Special 02. Sanitary Sewer Wye, 8-Inch x 6-Inch	6.000 EACH	.		.	
2340	SPV.0060 Special 03. Core & Connect Sanitary to Existing Lift Station	1.000 EACH	.		.	
2350	SPV.0060 Special 04. Connect Force Main to Existing Force Main	1.000 EACH	.		.	
2360	SPV.0060 Special 05. Connect Force Main to Existing Manhole	1.000 EACH	.		.	
2370	SPV.0060 Special 06. Connect to Existing Sanitary Laterals	6.000 EACH	.		.	
2380	SPV.0060 Special 07. Adjust Existing Sanitary Manhole	2.000 EACH	.		.	
2390	SPV.0060 Special 08. Remove Existing Sanitary Manhole	1.000 EACH	.		.	
2400	SPV.0060 Special 09. Sanitary Sewer Manhole, Type 1	2.000 EACH	.		.	

SCHEDULE OF ITEMS

REVISED:

CONTRACT:	PROJECT(S):	FEDERAL ID(S):
20160308027	6350-01-62	WISC 2016074
	6350-07-77	WISC 2016069
	6350-07-87	N/A
	6350-07-88	WISC 2016070

CONTRACTOR : _____

LINE NO	ITEM DESCRIPTION	APPROX. QUANTITY AND UNITS	UNIT PRICE		BID AMOUNT	
			DOLLARS	CTS	DOLLARS	CTS
2410	SPV.0060 Special 10. Cleaning And Painting Bearings	12.000 EACH	.		.	
2420	SPV.0060 Special 11. Remove and Relocate Existing Service Meter/Lighting Control Cabinet	1.000 EACH	.		.	
2430	SPV.0060 Special 12. Lighting Assemblies Decorative Color	29.000 EACH	.		.	
2440	SPV.0060 Special 13. Lighting Assembly Banner Arm	29.000 EACH	.		.	
2450	SPV.0060 Special 14. Festoon Receptacle Box	29.000 EACH	.		.	
2460	SPV.0060 Special 15. Establish Section Corner Monuments	2.000 EACH	.		.	
2480	SPV.0090 Special 02. PVC Pipe 6-Inch	32.000 LF	.		.	
2490	SPV.0090 Special 03. PVC Pipe 12-Inch	8.000 LF	.		.	
2500	SPV.0090 Special 04. Sanitary Lateral, PVC 6-Inch	314.000 LF	.		.	
2510	SPV.0090 Special 05. Sanitary Sewer, PVC 8-Inch	422.000 LF	.		.	

SCHEDULE OF ITEMS

REVISED:

CONTRACT:	PROJECT(S):	FEDERAL ID(S):
20160308027	6350-01-62	WISC 2016074
	6350-07-77	WISC 2016069
	6350-07-87	N/A
	6350-07-88	WISC 2016070

CONTRACTOR : _____

LINE NO	ITEM DESCRIPTION	APPROX. QUANTITY AND UNITS	UNIT PRICE		BID AMOUNT	
			DOLLARS	CTS	DOLLARS	CTS
2520	SPV.0090 Special 06. Sanitary Force Main, PVC 4-Inch	487.000 LF
2530	SPV.0090 Special 07. Remove Existing Sanitary Sewer 8-Inch	387.000 LF
2540	SPV.0090 Special 08. Remove Existing Sanitary Lateral 6-Inch	268.000 LF
2550	SPV.0090 Special 09. Remove Existing Force Main 4-Inch	99.000 LF
2560	SPV.0090 Special 10. Regrade Ditch	400.000 LF
2570	SPV.0105 Special 01. Research And Locate Existing Property Monuments 6350-07-77	LUMP	LUMP	.	.	.
2580	SPV.0105 Special 02. Verify And Replace Existing Property Monuments 6350-07-77	LUMP	LUMP	.	.	.
2590	SPV.0105 Special 03. Removal and Salvage of Light Pole Assemblies	LUMP	LUMP	.	.	.
2600	SPV.0105 Special 04. Research And Locate Existing Property Monuments 6350-07-88	LUMP	LUMP	.	.	.

SCHEDULE OF ITEMS

CONTRACT:
20160308027

PROJECT(S):
6350-01-62
6350-07-77
6350-07-87
6350-07-88

FEDERAL ID(S):
WISC 2016074
WISC 2016069
N/A
WISC 2016070

REVISED:

CONTRACTOR : _____

LINE NO	ITEM DESCRIPTION	APPROX. QUANTITY AND UNITS	UNIT PRICE		BID AMOUNT	
			DOLLARS	CTS	DOLLARS	CTS
2610	SPV.0105 Special 05. Verify And Replace Existing Property Monuments 6350-07-88	LUMP	LUMP			.
2620	SPV.0120 Special 01. Water For Seeded Areas	504.000 MGAL		.		.
2630	SPV.0165 Special 01. 2-Inch Rigid Polystyrene Insulation	288.000 SF		.		.
2640	SPV.0180 Special 01. Geogrid Reinforcement	5,600.000 SY		.		.
2650	SPV.0180 Special 02. Preparing Topsoil For Lawn Type Turf	27,153.000 SY		.		.
2660	523.0148 Culvert Pipe Reinforced Concrete Horizontal Elliptical Class HE-III 48x76-Inch	186.000 LF		.		.
	SECTION 0001 TOTAL					.
	TOTAL BID					.