

# Wisconsin Department of Transportation

April 25, 2016

## Division of Transportation Systems Development

Bureau of Project Development  
4802 Sheboygan Avenue, Rm 601  
P O Box 7916  
Madison, WI 53707-7916

Telephone: (608) 266-1631  
Facsimile (FAX): (608) 266-8459

### NOTICE TO ALL CONTRACTORS:

**Proposal #27: 9210-17-60**  
**Mason Street, City of Green Bay**  
**Mason Street Bridge**  
**STH 54**  
**Brown County**

### Letting of May 10, 2016

This is Addendum No. 01, which provides for the following:

#### Plan Sheets

Revised Plan Sheets	
Plan Sheet	Plan Sheet Title (brief description of changes to sheet)
4	Construction Details – Waterway Markers – East (added to notes regarding waterway closures)
5	Construction Details – Waterway Markers – West (added to notes regarding waterway closures)

#### Plan Sheets

The following 8½ x 11-inch sheets are attached and made part of the plans for this proposal:  
Revised: 4 and 5.

The responsibility for notifying potential subcontractors and suppliers of these changes remains with the prime contractor.

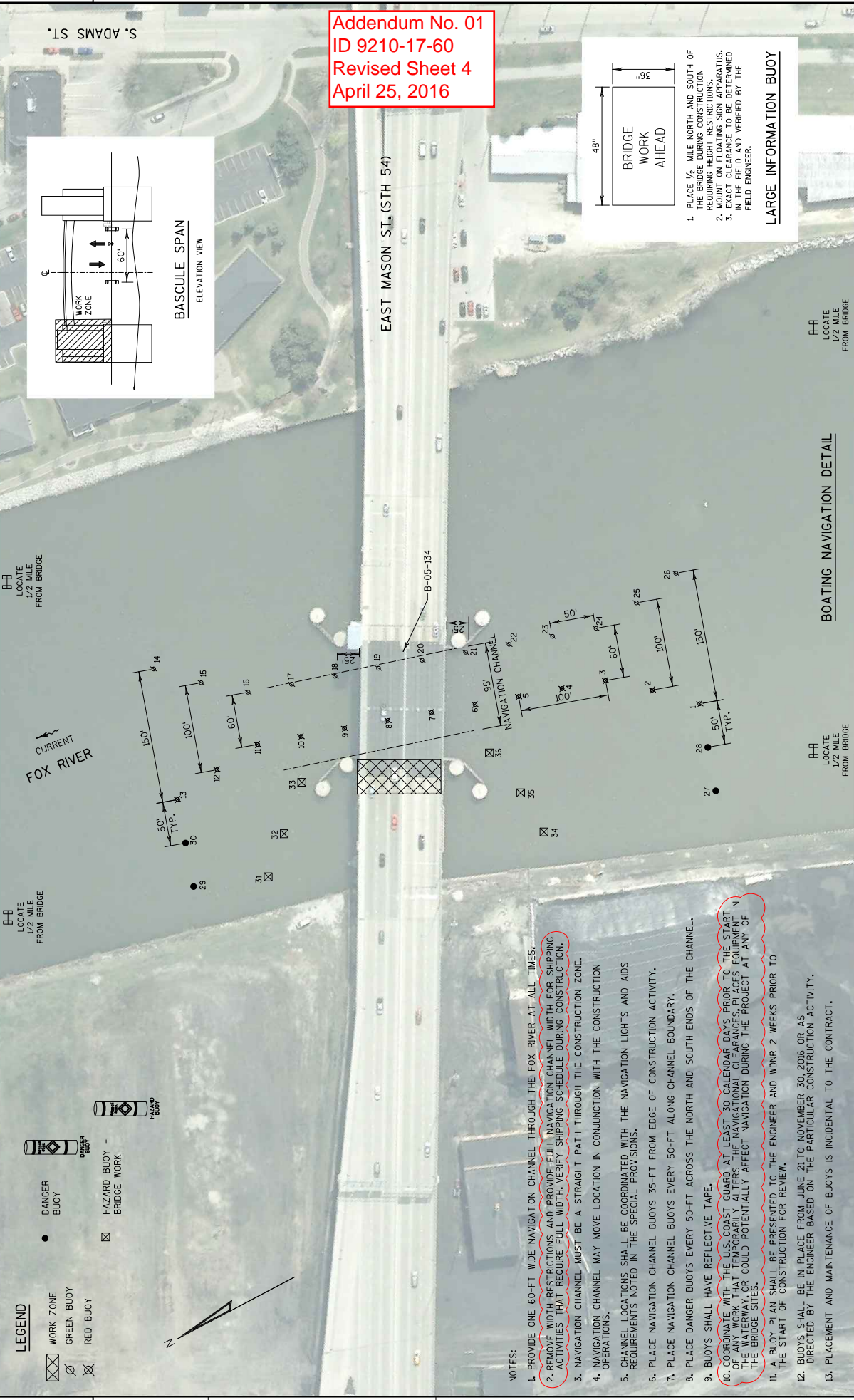
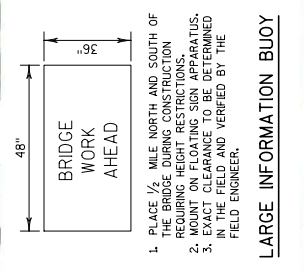
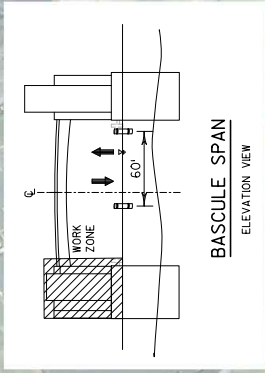
Sincerely,

*Mike Coleman*

Proposal Development Specialist  
Proposal Management Section

END OF ADDENDUM

Addendum No. 01  
ID 9210-17-60  
Revised Sheet 4  
April 25, 2016



LEGEND

- WORK ZONE
- GREEN BUOY
- RED BUOY
- DANGER BUOY
- HAZARD BUOY - BRIDGE WORK

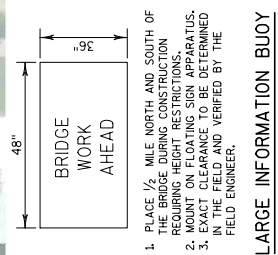
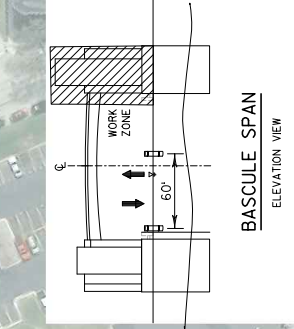
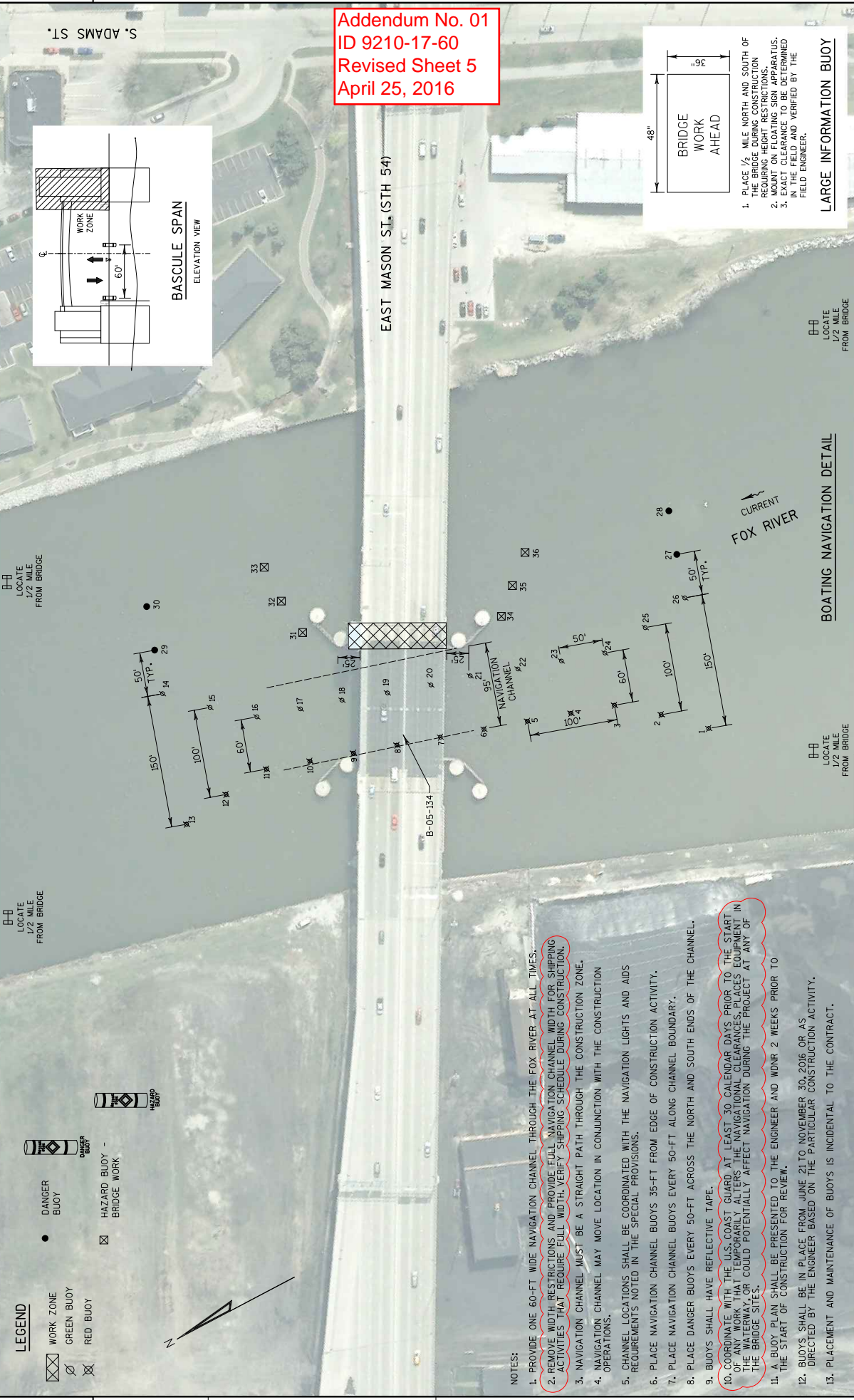


NOTES:

1. PROVIDE ONE 60-FT WIDE NAVIGATION CHANNEL THROUGH THE FOX RIVER AT ALL TIMES.
2. REMOVE WIDTH RESTRICTIONS AND PROVIDE FULL NAVIGATION CHANNEL WIDTH FOR SHIPPING ACTIVITIES THAT REQUIRE FULL WIDTH. VERIFY SHIPPING SCHEDULE DURING CONSTRUCTION.
3. NAVIGATION CHANNEL MUST BE A STRAIGHT PATH THROUGH THE CONSTRUCTION ZONE.
4. NAVIGATION CHANNEL MAY MOVE LOCATION IN CONJUNCTION WITH THE CONSTRUCTION OPERATIONS.
5. CHANNEL LOCATIONS SHALL BE COORDINATED WITH THE NAVIGATION LIGHTS AND AIDS REQUIREMENTS NOTED IN THE SPECIAL PROVISIONS.
6. PLACE NAVIGATION CHANNEL BUOYS 35-FT FROM EDGE OF CONSTRUCTION ACTIVITY.
7. PLACE NAVIGATION CHANNEL BUOYS EVERY 50-FT ALONG CHANNEL BOUNDARY.
8. PLACE DANGER BUOYS EVERY 50-FT ACROSS THE NORTH AND SOUTH ENDS OF THE CHANNEL.
9. BUOYS SHALL HAVE REFLECTIVE TAPE.
10. COORDINATE WITH THE U.S. COAST GUARD AT LEAST 30 CALENDAR DAYS PRIOR TO THE START OF ANY WORK THAT TEMPORARILY ALTERS THE NAVIGATIONAL CLEARANCES. PLACE EQUIPMENT IN THE AREA OR COULD POTENTIALLY AFFECT NAVIGATION DURING THE PROJECT AT ANY OF THE BRIDGE SITES.
11. A BUOY PLAN SHALL BE PRESENTED TO THE ENGINEER AND WDRN 2 WEEKS PRIOR TO THE START OF CONSTRUCTION FOR REVIEW.
12. BUOYS SHALL BE IN PLACE FROM JUNE 21 TO NOVEMBER 30, 2016 OR AS DIRECTED BY THE ENGINEER BASED ON THE PARTICULAR CONSTRUCTION ACTIVITY.
13. PLACEMENT AND MAINTENANCE OF BUOYS IS INCIDENTAL TO THE CONTRACT.

BOATING NAVIGATION DETAIL

Addendum No. 01  
ID 9210-17-60  
Revised Sheet 5  
April 25, 2016



LOCATE 1/2 MILE FROM BRIDGE

LOCATE 1/2 MILE FROM BRIDGE

LOCATE 1/2 MILE FROM BRIDGE

LOCATE 1/2 MILE FROM BRIDGE

- LEGEND**
- WORK ZONE
  - GREEN BUOY
  - RED BUOY
  - HAZARD BUOY - BRIDGE WORK
  - HAZARD BUOY - BRIDGE WORK
  - HAZARD BUOY - BRIDGE WORK

**NOTES:**

1. PROVIDE ONE 60-FT WIDE NAVIGATION CHANNEL THROUGH THE FOX RIVER AT ALL TIMES.
2. REMOVE WIDTH RESTRICTIONS AND PROVIDE FULL NAVIGATION CHANNEL WIDTH FOR SHIPPING ACTIVITIES THAT REQUIRE FULL WIDTH. VERIFY SHIPPING SCHEDULE DURING CONSTRUCTION.
3. NAVIGATION CHANNEL MUST BE A STRAIGHT PATH THROUGH THE CONSTRUCTION ZONE.
4. NAVIGATION CHANNEL MAY MOVE LOCATION IN CONJUNCTION WITH THE CONSTRUCTION OPERATIONS.
5. CHANNEL LOCATIONS SHALL BE COORDINATED WITH THE NAVIGATION LIGHTS AND AIDS REQUIREMENTS NOTED IN THE SPECIAL PROVISIONS.
6. PLACE NAVIGATION CHANNEL BUOYS 35-FT FROM EDGE OF CONSTRUCTION ACTIVITY.
7. PLACE NAVIGATION CHANNEL BUOYS EVERY 50-FT ALONG CHANNEL BOUNDARY.
8. PLACE DANGER BUOYS EVERY 50-FT ACROSS THE NORTH AND SOUTH ENDS OF THE CHANNEL.
9. BUOYS SHALL HAVE REFLECTIVE TAPE.
10. COORDINATE WITH THE U.S. COAST GUARD AT LEAST 30 CALENDAR DAYS PRIOR TO THE START OF ANY WORK THAT TEMPORARILY ALTERS THE NAVIGATIONAL CLEARANCES, PLACES EQUIPMENT IN THE WATERWAY, OR COULD POTENTIALLY AFFECT NAVIGATION DURING THE PROJECT AT ANY OF THE BRIDGE SITES.
11. A BUOY PLAN SHALL BE PRESENTED TO THE ENGINEER AND WDNR 2 WEEKS PRIOR TO THE START OF CONSTRUCTION FOR REVIEW.
12. BUOYS SHALL BE IN PLACE FROM JUNE 21 TO NOVEMBER 30, 2016 OR AS DIRECTED BY THE ENGINEER BASED ON THE PARTICULAR CONSTRUCTION ACTIVITY.
13. PLACEMENT AND MAINTENANCE OF BUOYS IS INCIDENTAL TO THE CONTRACT.