

Wisconsin Department of Transportation

October 24, 2016

Division of Transportation Systems Development

Bureau of Project Development
 4802 Sheboygan Avenue, Rm 601
 P O Box 7916
 Madison, WI 53707-7916

Telephone: (608) 266-1631
 Facsimile (FAX): (608) 266-8459

NOTICE TO ALL CONTRACTORS:

Proposal #05: 1401-02-71, WISC 2016 340
City of Columbus, James Street
Industrial Drive – River Road
STH 16
Columbia County

1401-02-73, N/A
City of Columbus, James Street
Industrial Drive – River Road
STH 16
Columbia County

Letting of November 8, 2016

This is Addendum No. 01, which provides for the following:

Special Provisions

Revised Special Provisions	
Article No.	Description
6	Utilities

Schedule of Items

Revised Bid Item Quantities					
Bid Item	Item Description	Unit	Old Quantity	Revised Quantity	Proposal Total
SPV.0060.247	1-Inch Tap and Corporation Valve	EACH	81	5	86
SPV.0060.248	1-Inch Curb Valve and Curb Box	EACH	79	5	84
SPV.0060.250	1 ½-Inch Tap and Corporation Valve	EACH	2	-1	1
SPV.0060.251	1 ½-Inch Curb Valve and Curb Box	EACH	2	-1	1
SPV.0090.246	1-Inch Water Service – Open Trench with Granular Backfill	LF	2,507.5	184	2,691.5
SPV.0090.249	1 ½-Inch Water Service – Open Trench with Granular Backfill	LF	37	-12	25
SPV.0090.255	Pipe Insulation	LF	744	8	752

Deleted Bid Item Quantities					
Bid Item	Item Description	Unit	Old Quantity	Revised Quantity	Proposal Total
611.3003	Inlets 3-FT Diameter	EACH	4	-4	0

Plan Sheets

Revised Plan Sheets	
Plan Sheet	Plan Sheet Title (brief description of changes to sheet)
132	Revised Water Main and Sanitary Sewer Plan and Profile
146	Revised Water Main and Sanitary Sewer Plan and Profile
147	Revised Water Main and Sanitary Sewer Plan and Profile
313	Revised Miscellaneous Quantity Sheet
314	Revised Miscellaneous Quantity Sheet
315	Revised Miscellaneous Quantity Sheet
343	Revised Miscellaneous Quantity Sheet
345	Revised Miscellaneous Quantity Sheet
346	Revised Miscellaneous Quantity Sheet

Added Plan Sheets	
Plan Sheet	Plan Sheet Title (brief description of changes to sheet)
185A	Revised Lighting Plan Detail (Modified Concrete Base Type 5)

The responsibility for notifying potential subcontractors and suppliers of these changes remains with the prime contractor.

Sincerely,

Mike Coleman

Proposal Development Specialist
Proposal Management Section

ADDENDUM NO. 01
PROJECT ID 1401-02-71
October 24, 2016

Special Provisions

6. Utilities.

*Replace entire subsection titled **WE Energies (Gas)** under section titled **Project 1401-02-71** with the following:*

We Energies (Gas) has underground gas distribution facilities at the following locations with the size denoted in parenthesis:

- STH 16 along the north-side from the USH 151 interchange to Lewis Street (4")
- STH 16 along the south-side from Maple Avenue to Dickason Boulevard (2")
- STH 16 along the south-side from Water Street to River Road (3" – 4")
- Dix Street along the west-side (1 ¼")
- Industrial Drive along the center (2")
- Continental Drive along the east-side (2")
- Meister Drive along the west-side (4")
- APC Way along the east-side (4")
- Maple Avenue along the east-side (2")
- Legion Court along the east-side (2")
- Lewis Street along the west-side (4")
- Lewis Street along the east-side north of STH 16 (2")
- Birdsey Street along the east-side (2")
- Main Street along the east-side (2")
- Spring Street along the east-side (2")
- Dickason Boulevard along the center (6")
- Ludington Street along the west-side north of STH 16 (1 ¼")
- Water Street along the west-side (3")
- Waterloo Street along the west-side (2")
- Udey Street along the west-side (2")
- Manning Street along the south-side (3")
- River Road along the west-side (4")

We Energies (Gas) has underground high pressure gas transmission main facilities at the following locations with the size denoted in parenthesis:

- STH 16 along the north-side from the USH 151 interchange to Birdsey Street (6")
- STH 16 along the north-side from Water Street to River Road (6")
- Birdsey Street along the west-side from STH 16 to the north (6")
- Water Street along the east-side from STH 16 to the north (6")
- River Road along the west-side from STH 16 to the south (6")

We Energies will install a new underground 6" PE along STH 16 from Station 112+00 WB LT to Station 129+00 WB LT prior to construction.

We Energies will install a new underground 2" PE along STH 16 from Station 129+00 WB LT continuing to Station 17+80 ID LT prior to construction.

We Energies will install a new underground 6" PE crossing of STH 16 at Station 129+00 WB prior to construction.

We Energies will install a new underground 6" PE running along STH 16 from Station 129+00 WB RT to Station 163+00 WB RT and crossing at Meister Street, Hurelle Street, Legion Court, N Lewis Street, and N Birdsey Street intersections prior to construction.

We Energies will install a new underground 2" PE crossing of STH 16 at Station 136+55 WB prior to construction.

We Energies will install a new underground 4" PE crossing of STH 16 at Station 143+95 WB prior to construction.

We Energies will install a new underground 4" PE crossing of STH 16 at Station 147+65 WB prior to construction.

We Energies will install a new underground 2" PE crossing of STH 16 at Station 155+00 WB prior to construction. After the pavement is removed, and prior to installing the storm sewer at this location, We Energies Gas will complete a vertical offset of the crossing to allow for storm sewer installation. We Energies will need 2 days during construction to complete the vertical offset at this location.

We Energies will install a new underground 4" Steel crossing of STH 16 at Station 158+85 WB prior to construction. After the pavement is removed, and prior to installing the storm sewer, We Energies Gas will complete a vertical offset of the crossing to allow for storm sewer installation. We Energies will need 2 days during construction to complete the vertical offset at this location.

We Energies will install a new underground 6" Steel crossing of STH 16 at Station 163+00 WB prior to construction. After the pavement is removed, and prior to installing the storm sewer at this location, We Energies Gas will complete a vertical offset of the crossing to allow for storm sewer installation. We Energies will need 2 days during construction to complete the vertical offset at this location.

We Energies will install a new underground 6" PE along STH 16 from Station 163+00 WB LT to Station 173+85 WB LT (crosses N Main Street, N Spring Street, and N Dickason Boulevard) prior to construction.

We Energies will install a new underground 6" PE crossing of STH 16 at Station 173+85 WB prior to construction.

We Energies will install a new underground 6" PE along the west side of S Dickason Boulevard from 11+25 SBD LT to 10+75 SBD LT prior to construction.

We Energies will install a new underground 8" PE along the west side of N Dickason Boulevard from 11+75 DSB LT to Mill Street prior to construction.

We Energies will install a new underground 6" PE crossing of STH 16 at Station 181+60 WB prior to construction.

We Energies will install a new underground 6" PE along STH 16 from Station 181+60 WB RT to Station 191+50 WB RT (crosses Water Street and Waterloo Street) prior to construction.

We Energies will install a new underground 2" PE crossing of STH 16 at Station 187+75 WB and continue along the west side of Udey Street prior to construction.

We Energies will install a new underground 6" PE crossing of Manning Street at Station 11+40 MS prior to construction.

We Energies will install a new underground 6" PE along Manning Street from Station 10+25 MS RT to Station 194+00 WB RT prior to construction.

We Energies will install a new underground 6" high pressure steel along STH 16 from Station 185+50 WB LT to Station 194+25 WB LT (crossing Udey Street) prior to construction.

The contractor will provide support and protection of We Energies facilities when excavating or installing roadway items under We Energies facilities.

It is imperative that the highway contractor contact We Energies before removing any gas facilities to verify that they have been discontinued and carry no natural gas or electrical current. The contractor must not assume that unmarked facilities have been discontinued. At no time is it acceptable to push, pull, cut or drill an unmarked facility without explicit consent from We Energies. Contractor must call the We Energies 24-hour dispatch lines to arrange for this verification.

We Energies Gas dispatch at (800) 261-5325

For work that will be completed during construction, provide a 14 to 16 day advanced notice, and follow up with another notice 3 days before the worksite will be ready.

The We Energies contact is John Anderson, (920) 262-6879 office or (608) 513-2260 mobile, or Operations Supervisor, Scott Olson, (920) 262-6879 office or (608) 358-7916 mobile.

Schedule of Items

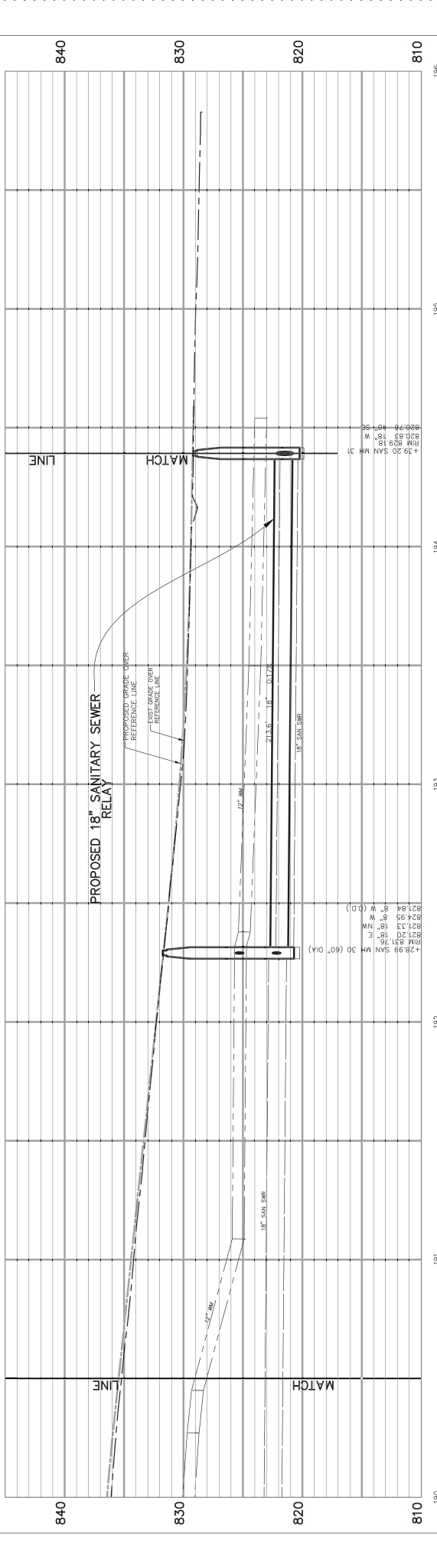
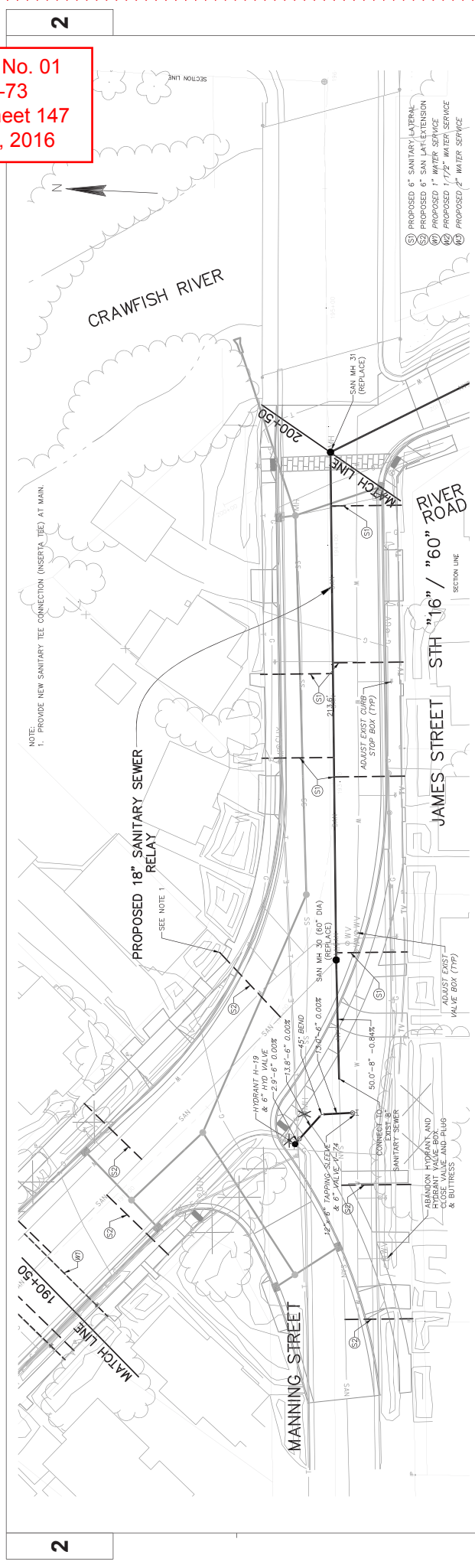
Attached, dated October 24, are the revised Schedule of Items Pages. All pages have been replaced.

Plan Sheets

The following 8½ x 11-inch sheets are attached and made part of the plans for this proposal:
Revised: 132, 146, 147, 313, 314, 315, 343, 345, and 346.
Added: 185A

END OF ADDENDUM

Addendum No. 01
 ID 1401-02-73
 Revised Sheet 147
 October 24, 2016



Addendum No. 01
 ID 1401-02-71
 Revised Sheet 314
 October 24, 2016

STRUCTURE SCHEDULE (CONTINUED)

CATEGORY	STRUC. NO.	STATION	OFFSET TO CENTER OF STRUCTURE	CASTING ELEV.	TOP OF		BOTTOM OF	APRON ENDWALLS		MANHOLES		INLET COVERS			MANHOLE COVERS	NOTES
					STR.	ELEV.		18-INCH (EACH)	24-INCH (EACH)	4-FT DIAMETER (EACH)	4-FT DIAMETER (EACH)	5-FT DIAMETER (EACH)	6-FT DIAMETER (EACH)	6-FT DIAMETER (EACH)		
0010	270	151+50.0WB	7.0 RT	860.82	859.57	859.96	5.62	1	2	7	7	9	1	13		
	271	151+75.0WB	18.5 LT	861.59	860.76	857.15	3.61	1	2	7	7	9	1	13		
	272	151+85.0WB	18.5 LT	862.05	861.22	857.22	4.00	1	2	7	7	9	1	13		
	273	151+147.5WB	39.0 RT	859.71	854.86	854.86	4.85	1	2	7	7	9	1	13		
	274	151+04.5WB	40.0 RT	859.57	858.74	855.26	3.48	1	2	7	7	9	1	13		
	275	151+74.1WB	18.5 RT	861.55	860.71	859.91	4.80	1	2	7	7	9	1	13		
	360	168+43.1WB	7.7 RT	840.06	839.81	834.20	4.61	1	2	7	7	9	1	13		
	370	168+12.5WB	7.1 RT	840.45	839.20	834.20	5.00	1	2	7	7	9	1	13		
	371	168+12.6WB	24.2 LT	840.04	839.21	835.35	3.86	1	2	7	7	9	1	13		
	372	168+12.5WB	24.2 RT	840.04	839.21	835.31	3.90	1	2	7	7	9	1	13		
	380	164+75.0WB	6.0 RT	841.39	840.14	836.14	4.00	1	2	7	7	9	1	13		
	381	164+75.0WB	24.5 LT	840.95	840.12	837.04	3.07	1	2	7	7	9	1	13		
	382	164+75.0WB	24.5 RT	840.95	840.12	837.00	3.11	1	2	7	7	9	1	13		
	390	162+49.2WB	6.0 RT	844.61	843.76	839.25	5.53	1	2	7	7	9	1	13		
	391	162+35.0WB	6.0 RT	845.72	844.47	839.78	5.69	1	2	7	7	9	1	13		
	392	162+35.0WB	18.5 LT	845.41	844.16	839.71	4.45	1	2	7	7	9	1	13		
	393	162+35.0WB	18.5 RT	845.41	844.58	839.65	4.93	1	2	7	7	9	1	13		
	394	162+52.2WB	25.4 RT	844.32	844.09	840.01	4.08	1	2	7	7	9	1	13		
	395	162+48.7WB	40.0 RT	844.52	843.89	840.20	3.49	1	2	7	7	9	1	13		
	396	162+49.2WB	49.9 LT	844.32	843.49	839.34	4.15	1	2	7	7	9	1	13		
	397	162+61.4WB	50.0 LT	844.59	843.76	839.75	4.01	1	2	7	7	9	1	13		
	400	161+40.0WB	6.0 RT	850.21	849.96	844.75	7.21	1	2	7	7	9	1	13		
	401	161+40.0WB	24.5 LT	849.77	848.94	845.66	3.07	1	2	7	7	9	1	13		
	402	161+40.0WB	24.5 RT	849.78	848.95	845.63	3.12	1	2	7	7	9	1	13		
	410	159+26.6WB	6.0 RT	856.82	855.57	851.32	4.25	1	2	7	7	9	1	13		
	411	159+78.0WB	6.0 RT	859.05	857.80	852.25	5.55	1	2	7	7	9	1	13		
	412	159+78.0WB	18.5 RT	858.73	857.90	854.45	3.45	1	2	7	7	9	1	13		
	413	159+26.6WB	55.0 LT	856.29	855.46	852.41	3.05	1	2	7	7	9	1	13		
	414	159+99.6WB	55.0 LT	857.33	856.50	853.08	3.42	1	2	7	7	9	1	13		
	415	159+78.0WB	18.5 LT	859.73	857.90	854.51	3.39	1	2	7	7	9	1	13		
	420	157+50.0WB	6.0 RT	866.45	865.20	861.20	4.00	1	2	7	7	9	1	13		
	421	157+50.0WB	18.5 LT	866.13	865.30	862.08	3.22	1	2	7	7	9	1	13		
	422	157+50.0WB	18.5 RT	866.13	865.30	862.04	3.25	1	2	7	7	9	1	13		
	430	156+55.8WB	6.0 RT	874.77	873.52	869.80	3.72	1	2	7	7	9	1	13		
	431	156+42.7WB	22.4 LT	874.68	873.85	870.74	3.10	1	2	7	7	9	1	13		
	432	156+74.6WB	42.4 LT	875.65	874.82	871.13	3.69	1	2	7	7	9	1	13		
	433	156+40.7WB	22.3 RT	874.69	873.86	870.70	3.15	1	2	7	7	9	1	13		
	434	156+49.2WB	43.6 RT	875.48	874.65	871.12	3.53	1	2	7	7	9	1	13		
	460	168+43.3WB	53.9 RT	839.26	838.43	833.66	4.77	1	2	7	7	9	1	13		
	461	168+59.0WB	54.1 RT	839.43	838.60	833.55	3.04	1	2	7	7	9	1	13		
	500	167+61.6WB	6.0 RT	839.85	838.60	834.16	4.44	1	2	7	7	9	1	13		
	501	167+61.6WB	24.5 LT	839.42	838.59	835.60	2.99	1	2	7	7	9	1	13		
	502	167+61.6WB	24.5 LT	839.43	838.60	835.90	2.70	1	2	7	7	9	1	13		
	503	167+71.6WB	24.5 LT	839.42	838.59	835.90	2.69	1	2	7	7	9	1	13		
	504	167+61.6WB	24.5 RT	839.42	838.59	835.57	3.02	1	2	7	7	9	1	13		
	505	167+61.6WB	24.5 RT	839.43	838.60	835.97	2.73	1	2	7	7	9	1	13		
	506	167+71.6WB	24.5 RT	839.42	838.59	835.87	2.72	1	2	7	7	9	1	13		
	510	168+50.0WB	6.0 RT	840.22	838.97	834.44	4.52	1	2	7	7	9	1	13		
	511	168+50.0WB	24.5 LT	839.78	838.95	835.88	3.06	1	2	7	7	9	1	13		
	512	168+50.0WB	24.5 RT	839.78	838.95	835.84	3.10	1	2	7	7	9	1	13		
	520	170+40.0WB	6.0 RT	843.77	842.52	837.73	4.79	1	2	7	7	9	1	13		
	521	170+40.0WB	24.5 LT	843.34	842.51	838.63	3.88	1	2	7	7	9	1	13		
		SUBTOTALS						1	2	17	10	18	1	27		

WATER MAIN VALVES AND FLUSHING ASSEMBLY

CATEGORY 0020

STATION	LOCATION	OFFSET	SPV.0060.238 4-INCH EACH	SPV.0060.239 6-INCH EACH	SPV.0060.240 8-INCH EACH	SPV.0060.241 10-INCH EACH	SPV.0060.242 12-INCH EACH	SPV.0060.262 2-INCH FLUSHING ASSEMBLY EACH
104-00	DIX STREET	LT 21.5'						
144-81.5	INDUSTRIAL DRIVE	RT 25'						
174-68	INDUSTRIAL DRIVE	RT 3.5'						
174-68	INDUSTRIAL DRIVE	RT 7'						
129-26	JAMES STREET	LT 33'			1			
130-54	JAMES STREET	LT 20'						
133-54	JAMES STREET	LT 17'						
136-41	JAMES STREET	LT 12.5'						
137-09	JAMES STREET	LT 18.5'						
137-09	JAMES STREET	LT 13.5'						
137-69	JAMES STREET	LT 8'						
137-74	JAMES STREET	LT 13'						
139-17	JAMES STREET	LT 8'			1			
142-58	JAMES STREET	LT 13'						
142-60	JAMES STREET	RT 52'						
142-63.5	JAMES STREET	RT 52'			1			
142-68	JAMES STREET	LT 13'						
144-45.5	JAMES STREET	LT 13'						
144-50.5	JAMES STREET	LT 18'						
144-55.5	JAMES STREET	LT 13'						
144-55.5	JAMES STREET	LT 23.5'	1					
148-40	JAMES STREET	LT 13'						
151-15.5	JAMES STREET	LT 8'						
151-15.5	JAMES STREET	LT 18'						
151-20.5	JAMES STREET	LT 13'						
155-19	JAMES STREET	LT 11.5'						
155-24	JAMES STREET	LT 13.5'						
155-57	JAMES STREET	LT 14'						
155-58	JAMES STREET	LT 17.5'						
155-58	JAMES STREET	RT 30'						
155-86.5	JAMES STREET	LT 30'						
155-98	JAMES STREET	LT 10'						
159-03	JAMES STREET	LT 10'						
159-03.5	JAMES STREET	LT 65'	1					
159-08	JAMES STREET	RT 67'						
159-08	JAMES STREET	LT 5'						
159-08	JAMES STREET	LT 15'						
162-63.5	JAMES STREET	LT 13'						
162-63.5	JAMES STREET	LT 13'						
162-65.5	JAMES STREET	RT 64'						
162-68.5	JAMES STREET	RT 65'						
162-69	JAMES STREET	LT 8'						
162-69	JAMES STREET	LT 18'						
162-73.5	JAMES STREET	LT 13'						
166-59	JAMES STREET	LT 19'						
166-64	JAMES STREET	LT 24'						
166-64	JAMES STREET	LT 71'						
166-69	JAMES STREET	LT 19'						
170-31.5	JAMES STREET	LT 19'						
170-36.5	JAMES STREET	LT 14'						
170-36.5	JAMES STREET	LT 24'						
170-36.5	JAMES STREET	LT 8'						
174-07.5	JAMES STREET	LT 60'						
174-07.5	JAMES STREET	LT 60'						
174-08.5	JAMES STREET	RT 65'						
174-11.5	JAMES STREET	LT 18.5'						
174-11.5	JAMES STREET	LT 62'						
174-16.5	JAMES STREET	LT 13.5'						
174-16.5	JAMES STREET	LT 23.5'						
174-16.5	JAMES STREET	LT 12.5'						
174-16.5	JAMES STREET	LT 66'						
178-00	JAMES STREET	LT 18'						
178-00.5	JAMES STREET	RT 70'						
178-05	JAMES STREET	LT 13'						
178-05	JAMES STREET	LT 23'						
178-10	JAMES STREET	LT 18'						
181-60	JAMES STREET	LT 18.5'						
181-60	JAMES STREET	RT 70.5'						
181-60	JAMES STREET	RT 70.5'						
185-51	JAMES STREET	LT 11'						
185-65	JAMES STREET	RT 58'						
185-70.5	JAMES STREET	RT 57.5'						
188-04	JAMES STREET	LT 56.5'						
188-05	JAMES STREET	LT 15.5'						
191-82	JAMES STREET	LT 49.5'						
TOTALS =			4	8	23	13	29	3

WATER PIPE AND FITTINGS

CATEGORY 0020

STATION TO	STATION/LOCATION	SPV.0090.233 4-INCH WATER MAIN-GRANULAR BACKFILL LF	SPV.0090.234 6-INCH WATER MAIN-GRANULAR BACKFILL LF	SPV.0090.235 8-INCH WATER MAIN-GRANULAR BACKFILL LF	SPV.0090.236 10-INCH WATER MAIN-GRANULAR BACKFILL LF	SPV.0090.237 12-INCH WATER MAIN-GRANULAR BACKFILL LF	SPV.0060.259 DUCTILE IRON PIPE NITRILE GASKET EACH
104-00	DIX STREET						
144-00	DIX STREET						
148-00	INDUSTRIAL DRIVE			14.5	377	132.5	
129-26	JAMES STREET					501.5	
130-50	JAMES STREET			226.5		500	
140-50	JAMES STREET			66	21.5	500.5	
145-50	JAMES STREET	20				500	
150-50	JAMES STREET			63.5	177.5	500	
155-50	JAMES STREET			147.5	94.5	500.5	
160-50	JAMES STREET	10.5	8	124.5	248	5	
165-50	JAMES STREET	17.5	22	45	90.5	500	10
170-50	JAMES STREET		19.5		160	500	
175-50	JAMES STREET	9.5			136.5	500	
180-50	JAMES STREET	13					
185-50	JAMES STREET	70.5	76	116	1285.5	5302.5	10
TOTALS=							

Addendum No. 01
ID 1401-02-73
Revised Sheet 343
October 24, 2016

WATER MAIN OR WATER SERVICE INSULATION		
CATEGORY 0020		
STATION TO	STATION/LOCATION	SPV.0090.255 PIPE INSULATION LF
144-00	18-00 INDUSTRIAL DRIVE	8
129-26	130-50 JAMES STREET	16
130-50	135-50 JAMES STREET	8
135-50	140-50 JAMES STREET	32
140-50	145-50 JAMES STREET	48
145-50	150-50 JAMES STREET	76
150-50	155-50 JAMES STREET	32
155-50	160-50 JAMES STREET	56
160-50	165-50 JAMES STREET	96
165-50	170-50 JAMES STREET	136
170-50	175-50 JAMES STREET	96
175-50	180-50 JAMES STREET	120
180-50	185-50 JAMES STREET	16
185-50	190-50 JAMES STREET	16
TOTALS =		752

WATER SERVICES CATEGORY 0020											
STATION	LOCATION	OFFSET	SPV.0060.246 1-INCH WATER SERVICE (OTWGB)	SPV.0060.247 1-INCH TAP AND COMPOSITION VALVE EACH	SPV.0060.248 1-INCH CURB VALVE AND BOX EACH	SPV.0090.249 1 1/2-INCH WATER SERVICE (OTWGB) LF	SPV.0060.250 1 1/2-INCH TAP AND COMPOSITION VALVE EACH	SPV.0060.251 1 1/2-INCH CURB VALVE AND BOX EACH	SPV.0090.252 2-INCH WATER SERVICE (OTWGB) LF	SPV.0060.253 2-INCH TAP AND COMPOSITION VALVE EACH	SPV.0060.254 2-INCH CURB VALVE AND BOX EACH
11+10	DIX STREET	LT 23'	14	1	1						
11+16	DIX STREET	LT 17.5'	62	1	1						
13+04.5	DIX STREET	LT 26.5'	47	1	1	25	1	1			
13+46.1	JAMES STREET	LT 19'	20.5	1	1						
13+81.5	JAMES STREET	LT 13.5'	20	1	1						
138+93	JAMES STREET	LT 13'	48	1	1						
145+28	JAMES STREET	LT 13'	46	1	1						
146+02.5	JAMES STREET	LT 13'	46	1	1						
146+59.5	JAMES STREET	LT 13'	46	1	1						
147+32.5	JAMES STREET	LT 13'	46	1	1						
148+18.5	JAMES STREET	LT 13'	46	1	1						
148+28.5	JAMES STREET	LT 13'	46	1	1						
149+61	JAMES STREET	LT 13'	46	1	1						
150+11	JAMES STREET	LT 13'	46	1	1						
151+46	JAMES STREET	LT 13'	25	1	1						
151+96	JAMES STREET	LT 13'	25	1	1						
153+32	JAMES STREET	LT 13'	25	1	1						
158+01.5	JAMES STREET	LT 10'	25	1	1						
156+78	JAMES STREET	LT 10'	25	1	1						
157+18	JAMES STREET	LT 10'	25	1	1						
157+68	JAMES STREET	LT 10'	54	1	1						
160+64	JAMES STREET	LT 19'	16	1	1						
160+94.5	JAMES STREET	LT 19'	16	1	1						
161+82	JAMES STREET	LT 19'	16	1	1						
161+96	JAMES STREET	LT 18'	53	1	1						
163+35	JAMES STREET	LT 16.5'	19	1	1						
163+61	JAMES STREET	LT 19'	16	1	1						
164+23	JAMES STREET	LT 19'	16	1	1						
164+86.5	JAMES STREET	LT 19'	54	1	1						
165+01	JAMES STREET	LT 19'	16	1	1						
165+18	JAMES STREET	LT 19'	54	1	1						
165+85.5	JAMES STREET	LT 19'	16	1	1						
166+40.5	JAMES STREET	LT 19'	54	1	1						
166+64	JAMES STREET	LT 68'	27	1	0						
167+38	JAMES STREET	LT 19'	54	1	1						
167+47.5	JAMES STREET	LT 19'	16	1	1						
168+46.5	JAMES STREET	LT 19'	16	1	1						
168+86.5	JAMES STREET	LT 19'	16	1	1						
169+04	JAMES STREET	LT 19'	54	1	1						
169+16.5	JAMES STREET	LT 19'	16	1	1						
169+45	JAMES STREET	LT 19'	16	1	1						
170+66.5	JAMES STREET	LT 19'	54	1	1						
170+86.5	JAMES STREET	LT 19'	16	1	1						
171+27	JAMES STREET	LT 19'	54	1	1						
171+43	JAMES STREET	LT 19'	16	1	1						
174+88	JAMES STREET	LT 19'	59	1	1						
175+11.5	JAMES STREET	LT 18.5'	38	1	1						
176+11.5	JAMES STREET	LT 52'	38	1	1						
174+83.5	JAMES STREET	LT 18.5'	45	1	1						
174+90	JAMES STREET	LT 18'	9	1	1						
175+14.5	JAMES STREET	LT 18'	9	1	1						
175+39.5	JAMES STREET	LT 18'	45	1	1						
175+74.5	JAMES STREET	LT 18'	45	1	1						
175+74.5	JAMES STREET	LT 18'	9	1	1						
175+85.5	JAMES STREET	LT 18'	9	1	1						
175+95.5	JAMES STREET	LT 18'	45	1	1						
176+06.5	JAMES STREET	LT 18'	45	1	1						
176+26.5	JAMES STREET	LT 18'	45	1	1						
176+26.5	JAMES STREET	LT 18'	45	1	1						
176+58.5	JAMES STREET	LT 18'	45	1	1						
176+70	JAMES STREET	LT 18'	9	1	1						
177+10	JAMES STREET	LT 18'	9	1	1						
177+35	JAMES STREET	LT 18'	42	1	1						
177+92.5	JAMES STREET	RT 67.5'	20	1	1						
178+04.5	JAMES STREET	RT 55.5'	20	1	1						
178+05	JAMES STREET	LT 69'	20	1	1						
178+59	JAMES STREET	LT 18'	9	1	1						
178+90	JAMES STREET	LT 18'	9	1	1						
179+24	JAMES STREET	LT 18'	44	1	1						
179+24	JAMES STREET	LT 18'	9	1	1						
179+25	JAMES STREET	LT 18'	9	1	1						
179+29	JAMES STREET	LT 18'	45	1	1						
179+57	JAMES STREET	LT 18'	45	1	1						
180+36.5	JAMES STREET	LT 18'	9	1	1						
180+43.5	JAMES STREET	LT 18'	9	1	1						
180+74.5	JAMES STREET	LT 18'	17	1	1						
181+74	JAMES STREET	RT 48'	26	1	1						

OTWGB
 OPEN TRENCH WITH
 GRANULAR BACKFILL

CONTINUED ON PREVIOUS PAGE

WATER SERVICES CATEGORY 0020										
STATION	LOCATION	SPV.0090.246 1-INCH WATER SERVICE (OTWGB)	SPV.0060.247 1-INCH TAP AND CORPORATION VALVE	SPV.0090.248 1-INCH CURB VALVE AND CURB BOX	SPV.0090.249 1 1/2-INCH WATER SERVICE (OTWGB)	SPV.0060.250 1 1/2-INCH TAP AND CORPORATION VALVE	SPV.0060.251 1 1/2-INCH CURB VALVE AND CURB BOX	SPV.0090.252 2-INCH WATER SERVICE (OTWGB)	SPV.0060.253 2-INCH TAP AND CORPORATION VALVE	SPV.0060.254 2-INCH CURB VALVE AND CURB BOX
		LF	EACH	EACH	LF	EACH	EACH	LF	EACH	EACH
188+05	JAMES STREET	10	1	0						
186+92	JAMES STREET	50	1	1						
190+18	JAMES STREET	21	1	1						
190+32	JAMES STREET	50	1	1						
190+36	JAMES STREET	50	1	1						
TOTALS =		2691.5	86	84	25	1	1	15	1	1

OTWGB
OPEN TRENCH WITH
GRANULAR BACKFILL

Addendum No. 01
ID 1401-02-73
Revised Sheet 346
October 24, 2016

SEWER PIPE CATEGORY 0010										
STATION	TO	STATION	LOCATION	SPV.0090.201 8-INCH GRANULAR SEWER-BACKFILL	SPV.0090.202 8-INCH SANITARY SEWER RELAY-GRANULAR BACKFILL	SPV.0090.203 8-INCH SANITARY SEWER-SPOIL BACKFILL	SPV.0090.204 10-INCH SANITARY SEWER-GRANULAR BACKFILL	SPV.0090.205 10-INCH SANITARY SEWER RELAY-GRANULAR BACKFILL	SPV.0090.206 18-INCH SANITARY SEWER RELAY-GRANULAR BACKFILL	SPV.0090.220 6-INCH SEWAGE FORCE MAIN-GRANULAR BACKFILL
10+00	14+00	DIX STREET		LF	LF	LF	LF	LF	LF	LF
14+00	18+00	INDUSTRIAL DRIVE								
12+50	130+50	JAMES STREET								
12+50	130+50	JAMES STREET		35						
13+50	140+50	JAMES STREET		36.9						
140+50	145+50	JAMES STREET		66.5	60	10	99	140	144	170
145+50	150+50	JAMES STREET						500		500
150+50	155+50	JAMES STREET		10	195		10	138		490
155+50	160+50	JAMES STREET		8	12			498.5		
160+50	165+50	JAMES STREET			69			226		
165+50	170+50	JAMES STREET			93.5					
170+50	175+50	JAMES STREET			177					
175+50	180+50	JAMES STREET		169	59			156		
180+50	185+50	JAMES STREET		131	50			76.5		
185+50	190+50	JAMES STREET								
190+50	195+50	JAMES STREET								
200+00	202+00	RIVER ROAD		1079	906	10	882	2235	213.5	1660
TOTALS =										

SANITARY SEWER PIPE ABANDONMENT CATEGORY 0010					
STATION	TO	STATION	LOCATION	SPV.0090.221 ABANDON SANITARY SEWER 8-INCH	SPV.0090.222 ABANDON SANITARY SEWER 10-INCH
10+00	14+00	DIX STREET		LF	LF
14+00	18+00	INDUSTRIAL DRIVE			400.00
12+50	130+50	JAMES STREET			348.00
130+50	135+50	JAMES STREET			
135+50	140+50	JAMES STREET		517.00	
140+50	145+50	JAMES STREET		390.00	
145+50	150+50	JAMES STREET			
150+50	155+50	JAMES STREET		40.00	49.00
155+50	160+50	JAMES STREET			
160+50	165+50	JAMES STREET			
165+50	170+50	JAMES STREET		160.00	
170+50	175+50	JAMES STREET		85.00	
175+50	180+50	JAMES STREET			
180+50	185+50	JAMES STREET			
185+50	190+50	JAMES STREET			
190+50	195+50	JAMES STREET			
200+00	202+00	RIVER ROAD		1777	797
TOTALS =					

SANITARY MANHOLES CATEGORY 0010									
STATION	LOCATION	OFFSET	SPV.0200.207 NEW 48-INCH SANITARY SEWER MANHOLE	SPV.0200.208 NEW 48-INCH SANITARY SEWER MANHOLE (O.D.)	SPV.0200.209 NEW 84-INCH SANITARY SEWER MANHOLE	SPV.0200.210 48-INCH SANITARY SEWER MANHOLE REPLACEMENT	SPV.0200.211 48-INCH SANITARY SEWER MANHOLE REPLACEMENT (O.D.)	SPV.0200.212 60-INCH SANITARY SEWER MANHOLE REPLACEMENT (O.D.)	SPV.0060.227 EPOXY COATING IN SANITARY SEWER MANHOLE
10+05	DIX STREET	LT 5'	9.7			9			
12+49	DIX STREET	LT 16'	13			14			
17+64.5	INDUSTRIAL DRIVE	RT 14'							
131+78	JAMES STREET	0	12						
136+71.5	JAMES STREET	LT 4.5'	11						
137+26.5	JAMES STREET	LT 5'		18			15		
137+26.5	JAMES STREET	LT 5'		18					
137+26.5	JAMES STREET	RT 66'				9			
138+48.5	JAMES STREET	RT 5'	18						
141+40	JAMES STREET	RT 2'	17						
144+40	JAMES STREET	RT 2'							
144+39.5	JAMES STREET	LT 64.5'		17.5					
147+90.5	JAMES STREET	RT 2'				15			
150+00	JAMES STREET	RT 2'				11			
153+35	JAMES STREET	RT 7'	8.5			14			
155+39.5	JAMES STREET	RT 6'	6.5						
155+54	JAMES STREET	LT 6.5'	6.5						1
155+61.5	JAMES STREET	RT 5'		7					1
159+14	JAMES STREET	LT 1'							1
174+26.5	JAMES STREET	LT 7.5'		13.5					
177+26.5	JAMES STREET	LT 7.5'	11						
181+81	JAMES STREET	RT 5'	9.5						
181+81	JAMES STREET	RT 7'							
192+29	JAMES STREET	RT 14'							
200+50	RIVER ROAD	LT 20'				8.5			10.5
201+94	RIVER ROAD	0	133	67	7	91	15	11	4
TOTALS =									



Proposal Schedule of Items

Proposal ID: 20161108005

Project(s): 1401-02-71, 1401-02-73

SECTION: 0001 Roadway Items

Alt Set ID: Alt Mbr ID:

Proposal Line Number	Item ID Description	Approximate Quantity and Units	Unit Price	Bid Amount
0010	201.0120 Clearing	1,720.000 ID	_____.	_____.
0020	201.0220 Grubbing	1,720.000 ID	_____.	_____.
0030	204.0100 Removing Pavement	43,100.000 SY	_____.	_____.
0040	204.0150 Removing Curb & Gutter	3,200.000 LF	_____.	_____.
0050	204.0155 Removing Concrete Sidewalk	6,850.000 SY	_____.	_____.
0060	204.0165 Removing Guardrail	75.000 LF	_____.	_____.
0070	204.0170 Removing Fence	1,500.000 LF	_____.	_____.
0080	204.0195 Removing Concrete Bases	20.000 EACH	_____.	_____.
0090	204.0210 Removing Manholes	18.000 EACH	_____.	_____.
0100	204.0220 Removing Inlets	42.000 EACH	_____.	_____.
0110	204.0245 Removing Storm Sewer (size) 012. 12-INCH	1,650.000 LF	_____.	_____.
0120	204.0245 Removing Storm Sewer (size) 015. 15-INCH	1,100.000 LF	_____.	_____.
0130	204.0245 Removing Storm Sewer (size) 018. 18-INCH	1,350.000 LF	_____.	_____.
0140	204.0245 Removing Storm Sewer (size) 021. 21-INCH	390.000 LF	_____.	_____.
0150	204.0245 Removing Storm Sewer (size) 030. 30-INCH	80.000 LF	_____.	_____.
0160	204.0291.S Abandoning Sewer	5.000 CY	_____.	_____.



Proposal Schedule of Items

Proposal ID: 20161108005

Project(s): 1401-02-71, 1401-02-73

SECTION: 0001 Roadway Items

Alt Set ID:

Alt Mbr ID:

Proposal Line Number	Item ID Description	Approximate Quantity and Units	Unit Price	Bid Amount
0170	204.9090.S Removing (item description) 001. Concrete Barrier	20.000 LF	_____.	_____.
0180	205.0100 Excavation Common	48,530.000 CY	_____.	_____.
0190	209.0100 Backfill Granular	25.000 CY	_____.	_____.
0200	210.0100 Backfill Structure	35.000 CY	_____.	_____.
0210	213.0100 Finishing Roadway (project) 001. 1401- 02-71	1.000 EACH	_____.	_____.
0220	305.0110 Base Aggregate Dense 3/4-Inch	2,800.000 TON	_____.	_____.
0230	305.0120 Base Aggregate Dense 1 1/4-Inch	34,990.000 TON	_____.	_____.
0240	312.0110 Select Crushed Material	29,520.000 TON	_____.	_____.
0250	415.0090 Concrete Pavement 9-Inch	27,950.000 SY	_____.	_____.
0260	415.0095 Concrete Pavement 9 1/2-Inch	7,480.000 SY	_____.	_____.
0270	415.0210 Concrete Pavement Gaps	34.000 EACH	_____.	_____.
0280	415.1090 Concrete Pavement HES 9-Inch	4,625.000 SY	_____.	_____.
0290	416.0160 Concrete Driveway 6-Inch	2,320.000 SY	_____.	_____.
0300	416.0190 Concrete Driveway 9-Inch	100.000 SY	_____.	_____.
0310	416.0260 Concrete Driveway HES 6-Inch	230.000 SY	_____.	_____.
0320	416.0610 Drilled Tie Bars	23.000 EACH	_____.	_____.
0330	416.0620 Drilled Dowel Bars	86.000 EACH	_____.	_____.



Proposal Schedule of Items

Proposal ID: 20161108005

Project(s): 1401-02-71, 1401-02-73

SECTION: 0001 Roadway Items

Alt Set ID:

Alt Mbr ID:

Proposal Line Number	Item ID Description	Approximate Quantity and Units	Unit Price	Bid Amount
0340	440.4410 Incentive IRI Ride	5,200.000 DOL	_____ .1.00000	5,200.00
0350	455.0605 Tack Coat	6.000 GAL	_____ ._____	_____ ._____
0360	460.2000 Incentive Density HMA Pavement	315.000 DOL	_____ .1.00000	315.00
0370	460.4000 HMA Cold Weather Paving	300.000 TON	_____ ._____	_____ ._____
0380	460.6224 HMA Pavement 4 MT 58-28 S	375.000 TON	_____ ._____	_____ ._____
0390	465.0105 Asphaltic Surface	580.000 TON	_____ ._____	_____ ._____
0400	465.0120 Asphaltic Surface Driveways and Field Entrances	215.000 TON	_____ ._____	_____ ._____
0410	465.0125 Asphaltic Surface Temporary	1,085.000 TON	_____ ._____	_____ ._____
0420	465.0315 Asphaltic Flumes	60.000 SY	_____ ._____	_____ ._____
0430	522.1018 Apron Endwalls for Culvert Pipe Reinforced Concrete 18-Inch	1.000 EACH	_____ ._____	_____ ._____
0440	522.1024 Apron Endwalls for Culvert Pipe Reinforced Concrete 24-Inch	5.000 EACH	_____ ._____	_____ ._____
0450	601.0405 Concrete Curb & Gutter 18-Inch Type A	40.000 LF	_____ ._____	_____ ._____
0460	601.0407 Concrete Curb & Gutter 18-Inch Type D	60.000 LF	_____ ._____	_____ ._____
0470	601.0409 Concrete Curb & Gutter 30-Inch Type A	16,700.000 LF	_____ ._____	_____ ._____
0480	601.0411 Concrete Curb & Gutter 30-Inch Type D	2,340.000 LF	_____ ._____	_____ ._____
0490	601.0600 Concrete Curb Pedestrian	200.000 LF	_____ ._____	_____ ._____



Proposal Schedule of Items

Proposal ID: 20161108005

Project(s): 1401-02-71, 1401-02-73

SECTION: 0001 Roadway Items

Alt Set ID: Alt Mbr ID:

Proposal Line Number	Item ID Description	Approximate Quantity and Units	Unit Price	Bid Amount
0500	602.0410 Concrete Sidewalk 5-Inch	84,050.000 SF	_____.	_____.
0510	602.0505 Curb Ramp Detectable Warning Field Yellow	1,020.000 SF	_____.	_____.
0520	608.0412 Storm Sewer Pipe Reinforced Concrete Class IV 12-Inch	934.000 LF	_____.	_____.
0530	608.0415 Storm Sewer Pipe Reinforced Concrete Class IV 15-Inch	1,702.000 LF	_____.	_____.
0540	608.0418 Storm Sewer Pipe Reinforced Concrete Class IV 18-Inch	113.000 LF	_____.	_____.
0550	608.0424 Storm Sewer Pipe Reinforced Concrete Class IV 24-Inch	5,009.000 LF	_____.	_____.
0560	608.0430 Storm Sewer Pipe Reinforced Concrete Class IV 30-Inch	308.000 LF	_____.	_____.
0570	608.6008 Storm Sewer Pipe Composite 8-Inch	11.000 LF	_____.	_____.
0580	611.0420 Reconstructing Manholes	2.000 EACH	_____.	_____.
0590	611.0535 Manhole Covers Type J-Special	43.000 EACH	_____.	_____.
0600	611.0624 Inlet Covers Type H	69.000 EACH	_____.	_____.
0610	611.0639 Inlet Covers Type H-S	30.000 EACH	_____.	_____.
0620	611.2004 Manholes 4-FT Diameter	28.000 EACH	_____.	_____.
0630	611.2005 Manholes 5-FT Diameter	15.000 EACH	_____.	_____.
0640	611.2006 Manholes 6-FT Diameter	1.000 EACH	_____.	_____.



Proposal Schedule of Items

Proposal ID: 20161108005

Project(s): 1401-02-71, 1401-02-73

SECTION: 0001 Roadway Items

Alt Set ID:

Alt Mbr ID:

Proposal Line Number	Item ID Description	Approximate Quantity and Units	Unit Price	Bid Amount
0650	611.2008 Manholes 8-FT Diameter	1.000 EACH	_____	_____
0670	611.3004 Inlets 4-FT Diameter	35.000 EACH	_____	_____
0680	611.3230 Inlets 2x3-FT	66.000 EACH	_____	_____
0690	612.0104 Pipe Underdrain 4-Inch	130.000 LF	_____	_____
0700	616.0700.S Fence Safety	1,500.000 LF	_____	_____
0710	618.0100 Maintenance And Repair of Haul Roads (project) 001. 1401-02-71	1.000 EACH	_____	_____
0720	619.1000 Mobilization	1.000 EACH	_____	_____
0730	620.0200 Concrete Median Blunt Nose	50.000 SF	_____	_____
0740	620.0300 Concrete Median Sloped Nose	150.000 SF	_____	_____
0750	623.0200 Dust Control Surface Treatment	54,510.000 SY	_____	_____
0760	624.0100 Water	1,235.000 MGAL	_____	_____
0770	625.0100 Topsoil	15,900.000 SY	_____	_____
0780	627.0200 Mulching	2,900.000 SY	_____	_____
0790	628.1104 Erosion Bales	50.000 EACH	_____	_____
0800	628.1504 Silt Fence	920.000 LF	_____	_____
0810	628.1520 Silt Fence Maintenance	460.000 LF	_____	_____
0820	628.1905 Mobilizations Erosion Control	20.000 EACH	_____	_____



Proposal Schedule of Items

Proposal ID: 20161108005

Project(s): 1401-02-71, 1401-02-73

SECTION: 0001 Roadway Items

Alt Set ID: Alt Mbr ID:

Proposal Line Number	Item ID Description	Approximate Quantity and Units	Unit Price	Bid Amount
0830	628.1910 Mobilizations Emergency Erosion Control	9.000 EACH	_____	_____
0840	628.2008 Erosion Mat Urban Class I Type B	4,250.000 SY	_____	_____
0850	628.6005 Turbidity Barriers	280.000 SY	_____	_____
0860	628.7005 Inlet Protection Type A	27.000 EACH	_____	_____
0870	628.7015 Inlet Protection Type C	90.000 EACH	_____	_____
0880	628.7020 Inlet Protection Type D	40.000 EACH	_____	_____
0890	628.7504 Temporary Ditch Checks	250.000 LF	_____	_____
0900	628.7555 Culvert Pipe Checks	3.000 EACH	_____	_____
0910	628.7560 Tracking Pads	12.000 EACH	_____	_____
0920	628.7570 Rock Bags	23.000 EACH	_____	_____
0930	629.0210 Fertilizer Type B	10.000 CWT	_____	_____
0940	630.0140 Seeding Mixture No. 40	90.000 LB	_____	_____
0950	630.0200 Seeding Temporary	30.000 LB	_____	_____
0960	631.0300 Sod Water	350.000 MGAL	_____	_____
0970	631.1000 Sod Lawn	15,100.000 SY	_____	_____
0980	633.5200 Markers Culvert End	3.000 EACH	_____	_____
0990	634.0616 Posts Wood 4x6-Inch X 16-FT	1.000 EACH	_____	_____



Proposal Schedule of Items

Proposal ID: 20161108005

Project(s): 1401-02-71, 1401-02-73

SECTION: 0001 Roadway Items

Alt Set ID:

Alt Mbr ID:

Proposal Line Number	Item ID Description	Approximate Quantity and Units	Unit Price	Bid Amount
1000	634.0620 Posts Wood 4x6-Inch X 20-FT	2.000 EACH	_____.	_____.
1010	634.0808 Posts Tubular Steel 2x2-Inch X 8-FT	2.000 EACH	_____.	_____.
1020	634.0811 Posts Tubular Steel 2x2-Inch X 11-FT	47.000 EACH	_____.	_____.
1030	634.0812 Posts Tubular Steel 2x2-Inch X 12-FT	7.000 EACH	_____.	_____.
1040	634.0814 Posts Tubular Steel 2x2-Inch X 14-FT	5.000 EACH	_____.	_____.
1050	637.2210 Signs Type II Reflective H	548.100 SF	_____.	_____.
1060	637.2215 Signs Type II Reflective H Folding	74.600 SF	_____.	_____.
1070	637.2230 Signs Type II Reflective F	62.000 SF	_____.	_____.
1080	638.2602 Removing Signs Type II	86.000 EACH	_____.	_____.
1090	638.3000 Removing Small Sign Supports	62.000 EACH	_____.	_____.
1100	642.5001 Field Office Type B	1.000 EACH	_____.	_____.
1110	643.0200 Traffic Control Surveillance and Maintenance (project) 001. 1401-02-71	230.000 DAY	_____.	_____.
1120	643.0300 Traffic Control Drums	25,300.000 DAY	_____.	_____.
1130	643.0420 Traffic Control Barricades Type III	6,200.000 DAY	_____.	_____.
1140	643.0500 Traffic Control Flexible Tubular Marker Posts	150.000 EACH	_____.	_____.
1150	643.0600 Traffic Control Flexible Tubular Marker Bases	150.000 EACH	_____.	_____.



Proposal Schedule of Items

Proposal ID: 20161108005

Project(s): 1401-02-71, 1401-02-73

SECTION: 0001 Roadway Items

Alt Set ID: Alt Mbr ID:

Proposal Line Number	Item ID Description	Approximate Quantity and Units	Unit Price	Bid Amount
1160	643.0705 Traffic Control Warning Lights Type A	155.000 DAY	_____.	_____.
1170	643.0715 Traffic Control Warning Lights Type C	2,350.000 DAY	_____.	_____.
1180	643.0800 Traffic Control Arrow Boards	250.000 DAY	_____.	_____.
1190	643.0900 Traffic Control Signs	7,500.000 DAY	_____.	_____.
1200	643.0920 Traffic Control Covering Signs Type II	70.000 EACH	_____.	_____.
1210	643.1050 Traffic Control Signs PCMS	980.000 DAY	_____.	_____.
1220	643.2000 Traffic Control Detour (project) 001. 1401-02-71	1.000 EACH	_____.	_____.
1230	643.3000 Traffic Control Detour Signs	6,500.000 DAY	_____.	_____.
1240	644.1410.S Temporary Pedestrian Surface Asphalt	1,000.000 SF	_____.	_____.
1250	644.1420.S Temporary Pedestrian Surface Plywood	500.000 SF	_____.	_____.
1260	644.1430.S Temporary Pedestrian Surface Plate	2,500.000 SF	_____.	_____.
1270	644.1601.S Temporary Curb Ramp	15.000 EACH	_____.	_____.
1280	644.1616.S Temporary Pedestrian Safety Fence	1,300.000 LF	_____.	_____.
1290	646.0106 Pavement Marking Epoxy 4-Inch	31,365.000 LF	_____.	_____.
1300	646.0126 Pavement Marking Epoxy 8-Inch	1,180.000 LF	_____.	_____.
1310	646.0600 Removing Pavement Markings	1,000.000 LF	_____.	_____.
1320	647.0166 Pavement Marking Arrows Epoxy Type 2	14.000 EACH	_____.	_____.



Proposal Schedule of Items

Proposal ID: 20161108005

Project(s): 1401-02-71, 1401-02-73

SECTION: 0001 Roadway Items

Alt Set ID: Alt Mbr ID:

Proposal Line Number	Item ID Description	Approximate Quantity and Units	Unit Price	Bid Amount
1330	647.0356 Pavement Marking Words Epoxy	9.000 EACH	_____.	_____.
1340	647.0456 Pavement Marking Curb Epoxy	1,720.000 LF	_____.	_____.
1350	647.0566 Pavement Marking Stop Line Epoxy 18-Inch	450.000 LF	_____.	_____.
1360	647.0606 Pavement Marking Island Nose Epoxy	3.000 EACH	_____.	_____.
1370	647.0656 Pavement Marking Parking Stall Epoxy	465.000 LF	_____.	_____.
1380	647.0726 Pavement Marking Diagonal Epoxy 12-Inch	75.000 LF	_____.	_____.
1390	647.0766 Pavement Marking Crosswalk Epoxy 6-Inch	4,440.000 LF	_____.	_____.
1400	649.0400 Temporary Pavement Marking Removable Tape 4-Inch	7,450.000 LF	_____.	_____.
1410	649.0402 Temporary Pavement Marking Paint 4-Inch	22,800.000 LF	_____.	_____.
1420	649.0600 Temporary Pavement Marking Removable Tape 6-Inch	1,170.000 LF	_____.	_____.
1430	649.0801 Temporary Pavement Marking Removable Tape 8-Inch	2,075.000 LF	_____.	_____.
1440	649.0802 Temporary Pavement Marking Paint 8-Inch	810.000 LF	_____.	_____.
1450	649.1100 Temporary Pavement Marking Stop Line 18-Inch	235.000 LF	_____.	_____.
1460	649.1200 Temporary Pavement Marking Stop Line Removable Tape 18-Inch	280.000 LF	_____.	_____.



Proposal Schedule of Items

Proposal ID: 20161108005

Project(s): 1401-02-71, 1401-02-73

SECTION: 0001 Roadway Items

Alt Set ID: Alt Mbr ID:

Proposal Line Number	Item ID Description	Approximate Quantity and Units	Unit Price	Bid Amount
1470	649.1300 Temporary Pavement Marking Stop Line 24-Inch	86.000 LF	_____.	_____.
1480	652.0225 Conduit Rigid Nonmetallic Schedule 40 2-Inch	20,220.000 LF	_____.	_____.
1490	652.0235 Conduit Rigid Nonmetallic Schedule 40 3-Inch	1,385.000 LF	_____.	_____.
1500	652.0800 Conduit Loop Detector	1,972.000 LF	_____.	_____.
1510	653.0140 Pull Boxes Steel 24x42-Inch	9.000 EACH	_____.	_____.
1520	653.0905 Removing Pull Boxes	18.000 EACH	_____.	_____.
1530	654.0101 Concrete Bases Type 1	10.000 EACH	_____.	_____.
1540	654.0102 Concrete Bases Type 2	8.000 EACH	_____.	_____.
1550	654.0105 Concrete Bases Type 5	71.000 EACH	_____.	_____.
1560	654.0110 Concrete Bases Type 10	2.000 EACH	_____.	_____.
1570	654.0217 Concrete Control Cabinet Bases Type 9 Special	2.000 EACH	_____.	_____.
1580	654.0230 Concrete Control Cabinet Bases Type L30	4.000 EACH	_____.	_____.
1590	655.0230 Cable Traffic Signal 5-14 AWG	893.000 LF	_____.	_____.
1600	655.0240 Cable Traffic Signal 7-14 AWG	2,993.000 LF	_____.	_____.
1610	655.0260 Cable Traffic Signal 12-14 AWG	1,579.000 LF	_____.	_____.
1620	655.0305 Cable Type UF 2-12 AWG Grounded	1,284.000 LF	_____.	_____.



Proposal Schedule of Items

Proposal ID: 20161108005

Project(s): 1401-02-71, 1401-02-73

SECTION: 0001 Roadway Items

Alt Set ID: Alt Mbr ID:

Proposal Line Number	Item ID Description	Approximate Quantity and Units	Unit Price	Bid Amount
1630	655.0515 Electrical Wire Traffic Signals 10 AWG	2,271.000 LF	_____.	_____.
1640	655.0610 Electrical Wire Lighting 12 AWG	14,157.000 LF	_____.	_____.
1650	655.0635 Electrical Wire Lighting 2 AWG	68,507.000 LF	_____.	_____.
1660	655.0640 Electrical Wire Lighting 1 AWG	1,080.000 LF	_____.	_____.
1670	655.0700 Loop Detector Lead In Cable	5,208.000 LF	_____.	_____.
1680	655.0800 Loop Detector Wire	6,636.000 LF	_____.	_____.
1690	656.0200 Electrical Service Meter Breaker Pedestal (location) 001. STH 16 & Industrial / Dix St	LS	LUMP SUM	_____.
1700	656.0200 Electrical Service Meter Breaker Pedestal (location) 002. STH 16 & STH 73	LS	LUMP SUM	_____.
1710	656.0400 Electrical Service Main Lugs Only Meter Pedestal (location) 001. Sta 123+25.3 EB	LS	LUMP SUM	_____.
1720	656.0400 Electrical Service Main Lugs Only Meter Pedestal (location) 002. Sta 150+92.7 WB	LS	LUMP SUM	_____.
1730	656.0400 Electrical Service Main Lugs Only Meter Pedestal (location) 003. Sta 10+00.0 SBD	LS	LUMP SUM	_____.
1740	656.0400 Electrical Service Main Lugs Only Meter Pedestal (location) 004. Sta 185+95.4 WB	LS	LUMP SUM	_____.
1750	657.0100 Pedestal Bases	6.000 EACH	_____.	_____.



Proposal Schedule of Items

Proposal ID: 20161108005

Project(s): 1401-02-71, 1401-02-73

SECTION: 0001 Roadway Items

Alt Set ID: Alt Mbr ID:

Proposal Line Number	Item ID Description	Approximate Quantity and Units	Unit Price	Bid Amount
1760	657.0255 Transformer Bases Breakaway 11 1/2-Inch Bolt Circle	4.000 EACH	_____.	_____.
1770	657.0315 Poles Type 4	4.000 EACH	_____.	_____.
1780	657.0420 Traffic Signal Standards Aluminum 13-FT	2.000 EACH	_____.	_____.
1790	657.0425 Traffic Signal Standards Aluminum 15-FT	6.000 EACH	_____.	_____.
1800	657.0595 Trombone Arms 25-FT	2.000 EACH	_____.	_____.
1810	657.0609 Luminaire Arms Single Member 4-Inch Clamp 6-FT	6.000 EACH	_____.	_____.
1820	657.1345 Install Poles Type 9	2.000 EACH	_____.	_____.
1830	657.1530 Install Monotube Arms 30-FT	2.000 EACH	_____.	_____.
1840	658.0110 Traffic Signal Face 3-12 Inch Vertical	17.000 EACH	_____.	_____.
1850	658.0115 Traffic Signal Face 4-12 Inch Vertical	6.000 EACH	_____.	_____.
1860	658.0120 Traffic Signal Face 5-12 Inch Vertical	1.000 EACH	_____.	_____.
1870	658.0155 Traffic Signal Face 3-12 Inch Horizontal	5.000 EACH	_____.	_____.
1880	658.0165 Traffic Signal Face 5-12 Inch Horizontal	1.000 EACH	_____.	_____.
1890	658.0215 Backplates Signal Face 3 Section 12-Inch	22.000 EACH	_____.	_____.
1900	658.0220 Backplates Signal Face 4 Section 12-Inch	6.000 EACH	_____.	_____.



Proposal Schedule of Items

Proposal ID: 20161108005

Project(s): 1401-02-71, 1401-02-73

SECTION: 0001 Roadway Items

Alt Set ID:

Alt Mbr ID:

Proposal Line Number	Item ID Description	Approximate Quantity and Units	Unit Price	Bid Amount
1910	658.0225 Backplates Signal Face 5 Section 12-Inch	2.000 EACH	_____.	_____.
1920	658.0416 Pedestrian Signal Face 16-Inch	16.000 EACH	_____.	_____.
1930	658.0500 Pedestrian Push Buttons	16.000 EACH	_____.	_____.
1940	658.0600 Led Modules 12-Inch Red Ball	24.000 EACH	_____.	_____.
1950	658.0605 Led Modules 12-Inch Yellow Ball	24.000 EACH	_____.	_____.
1960	658.0610 Led Modules 12-Inch Green Ball	24.000 EACH	_____.	_____.
1970	658.0615 Led Modules 12-Inch Red Arrow	6.000 EACH	_____.	_____.
1980	658.0620 Led Modules 12-Inch Yellow Arrow	14.000 EACH	_____.	_____.
1990	658.0625 Led Modules 12-Inch Green Arrow	8.000 EACH	_____.	_____.
2000	658.0635 Led Modules Pedestrian Countdown Timer 16-Inch	16.000 EACH	_____.	_____.
2010	658.5069 Signal Mounting Hardware (location) 001. STH 16 & Industrial / Dix St	LS	LUMP SUM	_____.
2020	658.5069 Signal Mounting Hardware (location) 002. STH 16 & STH 73	LS	LUMP SUM	_____.
2030	659.1125 Luminaires Utility LED C	6.000 EACH	_____.	_____.
2040	659.2130 Lighting Control Cabinets 120/240 30-Inch	3.000 EACH	_____.	_____.
2050	661.0100 Temporary Traffic Signals for Bridges (structure) 001. STH 73	LS	LUMP SUM	_____.



Proposal Schedule of Items

Proposal ID: 20161108005

Project(s): 1401-02-71, 1401-02-73

SECTION: 0001 Roadway Items

Alt Set ID: Alt Mbr ID:

Proposal Line Number	Item ID Description	Approximate Quantity and Units	Unit Price	Bid Amount
2060	661.0200 Temporary Traffic Signals for Intersections (location) 001. STH 16 & Industrial / Dix St	LS	LUMP SUM	_____.
2070	661.0300 Generators	30.000 DAY	_____.	_____.
2080	690.0150 Sawing Asphalt	2,500.000 LF	_____.	_____.
2090	690.0250 Sawing Concrete	13,200.000 LF	_____.	_____.
2100	715.0415 Incentive Strength Concrete Pavement	14,910.000 DOL	_____1.00000	14,910.00
2110	999.1500.S Crack and Damage Survey	LS	LUMP SUM	_____.
2120	ASP.1T0A On-the-Job Training Apprentice at \$5.00/HR	2,700.000 HRS	_____5.00000	13,500.00
2130	ASP.1T0G On-the-Job Training Graduate at \$5.00/HR	2,000.000 HRS	_____5.00000	10,000.00
2140	SPV.0035 Special 001. Sidewalk Vault Closure	5.000 CY	_____.	_____.
2150	SPV.0035 Special 002. Coloring Concrete Dark Gray	350.000 CY	_____.	_____.
2160	SPV.0035 Special 229. EBS Excavation and Backfill - Continental Drive	167.000 CY	_____.	_____.
2170	SPV.0060 Special 002. Low Permeable Plug	4.000 EACH	_____.	_____.
2180	SPV.0060 Special 003. Temporary Inlet Cover	1.000 EACH	_____.	_____.
2190	SPV.0060 Special 004. Manhole, Type 9 Special	1.000 EACH	_____.	_____.
2200	SPV.0060 Special 005. Inlet Cover Special Driveway	5.000 EACH	_____.	_____.



Proposal Schedule of Items

Proposal ID: 20161108005

Project(s): 1401-02-71, 1401-02-73

SECTION: 0001 Roadway Items

Alt Set ID: Alt Mbr ID:

Proposal Line Number	Item ID Description	Approximate Quantity and Units	Unit Price	Bid Amount
2210	SPV.0060 Special 006. Sealing Storm Structure	3.000 EACH	_____.	_____.
2220	SPV.0060 Special 101. Transformer Bases Breakaway-Black, 11 1/2-Inch Bolt Circle	71.000 EACH	_____.	_____.
2230	SPV.0060 Special 102. Poles Type 5 Aluminum-Black	29.000 EACH	_____.	_____.
2240	SPV.0060 Special 103. Luminaire Arms Single Member 4 1/2- Inch Clamp 8-FT-Black	29.000 EACH	_____.	_____.
2250	SPV.0060 Special 104. Luminaire Utility LED B-Black 139 Watt	29.000 EACH	_____.	_____.
2260	SPV.0060 Special 105. Decorative Pole Assembly - Type 1	42.000 EACH	_____.	_____.
2270	SPV.0060 Special 106. Decorative Pole Assembly - Type 2	23.000 EACH	_____.	_____.
2280	SPV.0060 Special 107. Modified Concrete Base - Type 5	23.000 EACH	_____.	_____.
2290	SPV.0060 Special 108. Lighting Control Cabinet CB300- Special	1.000 EACH	_____.	_____.
2300	SPV.0060 Special 109. Trans. Base Breakaway-Black 11 1/2-Inch Bolt Circle Spare	4.000 EACH	_____.	_____.
2310	SPV.0060 Special 110. Poles Type 5 Aluminum-Black Spare	2.000 EACH	_____.	_____.
2320	SPV.0060 Special 112. Luminaire Arms Single Member 4 1/2-Inch Clamp 8-FT-Black Spare	2.000 EACH	_____.	_____.
2330	SPV.0060 Special 113. Luminaire Utility LED B-Black 139 Watt Spare	2.000 EACH	_____.	_____.



Proposal Schedule of Items

Proposal ID: 20161108005

Project(s): 1401-02-71, 1401-02-73

SECTION: 0001 Roadway Items

Alt Set ID: Alt Mbr ID:

Proposal Line Number	Item ID Description	Approximate Quantity and Units	Unit Price	Bid Amount
2340	SPV.0060 Special 114. Decorative Pole Assembly Type 1 Spare	2.000 EACH	_____.	_____.
2350	SPV.0060 Special 115. Decorative Pole Assembly Type 2 Spare	14.000 EACH	_____.	_____.
2360	SPV.0060 Special 216. Replace Sanitary Lateral Saddle Tee	9.000 EACH	_____.	_____.
2370	SPV.0060 Special 217. New Sanitary Lateral Hub Connection	2.000 EACH	_____.	_____.
2380	SPV.0060 Special 218. Sanitary Lateral CIPP	37.000 EACH	_____.	_____.
2390	SPV.0060 Special 219. Sanitary Sewer Lateral Cleanout	2.000 EACH	_____.	_____.
2400	SPV.0060 Special 223. Abandon Sanitary Sewer Manhole	14.000 EACH	_____.	_____.
2410	SPV.0060 Special 224. Abandon Sewage Force Main (Cut Off)	2.000 EACH	_____.	_____.
2420	SPV.0060 Special 226. Adjust Sanitary Sewer Manhole	9.000 EACH	_____.	_____.
2430	SPV.0060 Special 227. Epoxy Coating of Sanitary Sewer Manhole	4.000 EACH	_____.	_____.
2440	SPV.0060 Special 238. 4-Inch Water Main Valve	4.000 EACH	_____.	_____.
2450	SPV.0060 Special 239. 6-Inch Water Main Valve	8.000 EACH	_____.	_____.
2460	SPV.0060 Special 240. 8-Inch Water Main Valve	23.000 EACH	_____.	_____.
2470	SPV.0060 Special 241. 10-Inch Water Main Valve	13.000 EACH	_____.	_____.
2480	SPV.0060 Special 242. 12-Inch Water Main Valve	29.000 EACH	_____.	_____.



Proposal Schedule of Items

Proposal ID: 20161108005

Project(s): 1401-02-71, 1401-02-73

SECTION: 0001 Roadway Items

Alt Set ID: Alt Mbr ID:

Proposal Line Number	Item ID Description	Approximate Quantity and Units	Unit Price	Bid Amount
2490	SPV.0060 Special 243. Hydrant Assembly	17.000 EACH	_____.	_____.
2500	SPV.0060 Special 244. Relocate Existing Hydrant	2.000 EACH	_____.	_____.
2510	SPV.0060 Special 247. 1-Inch Tap and Corporation Valve	86.000 EACH	_____.	_____.
2520	SPV.0060 Special 248. 1-Inch Curb Valve and Curb Box	84.000 EACH	_____.	_____.
2530	SPV.0060 Special 250. 1 1/2-Inch Tap and Corporation Valve	1.000 EACH	_____.	_____.
2540	SPV.0060 Special 251. 1 1/2-Inch Curb Valve and Curb Box	1.000 EACH	_____.	_____.
2550	SPV.0060 Special 253. 2-Inch Tap and Corporation Valve	1.000 EACH	_____.	_____.
2560	SPV.0060 Special 254. 2-Inch Curb Valve and Curb Box	1.000 EACH	_____.	_____.
2570	SPV.0060 Special 256. Abandon Water Main (Cut Off)	25.000 EACH	_____.	_____.
2580	SPV.0060 Special 257. Abandon Water Valve Box	40.000 EACH	_____.	_____.
2590	SPV.0060 Special 258. Abandon Hydrant	16.000 EACH	_____.	_____.
2600	SPV.0060 Special 259. Ductile Iron Pipe Nitrile Gasket	10.000 EACH	_____.	_____.
2610	SPV.0060 Special 260. Adjust Water Valve Box	11.000 EACH	_____.	_____.
2620	SPV.0060 Special 261. Adjust Curb Box	28.000 EACH	_____.	_____.
2630	SPV.0060 Special 262. 2-Inch Flushing Assembly	3.000 EACH	_____.	_____.



Proposal Schedule of Items

Proposal ID: 20161108005

Project(s): 1401-02-71, 1401-02-73

SECTION: 0001 Roadway Items

Alt Set ID:

Alt Mbr ID:

Proposal Line Number	Item ID Description	Approximate Quantity and Units	Unit Price	Bid Amount
2640	SPV.0060 Special 300. Pull Box Non-Conductive 24X36-Inch	16.000 EACH	_____.	_____.
2650	SPV.0060 Special 301. Pull Box Non-Conductive 24x42-Inch	19.000 EACH	_____.	_____.
2660	SPV.0060 Special 302. Decorative Traffic Signal Assembly Type A	4.000 EACH	_____.	_____.
2670	SPV.0060 Special 303. Decorative Traffic Signal Assembly Type B	4.000 EACH	_____.	_____.
2680	SPV.0090 Special 001. Reveal Curb	300.000 LF	_____.	_____.
2690	SPV.0090 Special 002. Ornamental Picket Fence 5- FT Height	157.000 LF	_____.	_____.
2700	SPV.0090 Special 003. Pipe Underdrain 6-Inch with Geotextile Fabric and Aggregate	2,050.000 LF	_____.	_____.
2710	SPV.0090 Special 201. 8-Inch Sanitary Sewer - Granular Backfill	1,079.000 LF	_____.	_____.
2720	SPV.0090 Special 202. 8-Inch Sanitary Sewer Relay - Granular Backfill	906.000 LF	_____.	_____.
2730	SPV.0090 Special 203. 8-inch Sanitary Sewer-Spoil Backfill	10.000 LF	_____.	_____.
2740	SPV.0090 Special 204. 10-Inch Sanitary Sewer- Granular Backfill	882.000 LF	_____.	_____.
2750	SPV.0090 Special 205. 10-Inch Sanitary Sewer Relay- Granular Backfill	2,235.000 LF	_____.	_____.
2760	SPV.0090 Special 206. 18-Inch Sanitary Sewer Relay- Granular Backfill	358.000 LF	_____.	_____.
2770	SPV.0090 Special 213. 6-Inch Sanitary Sewer Lateral	2,656.500 LF	_____.	_____.



Proposal Schedule of Items

Proposal ID: 20161108005

Project(s): 1401-02-71, 1401-02-73

SECTION: 0001 Roadway Items

Alt Set ID: Alt Mbr ID:

Proposal Line Number	Item ID Description	Approximate Quantity and Units	Unit Price	Bid Amount
2780	SPV.0090 Special 214. 4-Inch Sanitary Sewer Lateral Extension	35.000 LF	_____.	_____.
2790	SPV.0090 Special 215. 6-Inch Sanitary Sewer Lateral Extension	1,496.000 LF	_____.	_____.
2800	SPV.0090 Special 220. 6-Inch Sewage Force Main-Granular Backfill	1,660.000 LF	_____.	_____.
2810	SPV.0090 Special 221. Abandon Sanitary Sewer 8-Inch	1,777.000 LF	_____.	_____.
2820	SPV.0090 Special 222. Abandon Sanitary Sewer 10-Inch	797.000 LF	_____.	_____.
2830	SPV.0090 Special 233. 4-Inch Water Main-Granular Backfill	70.500 LF	_____.	_____.
2840	SPV.0090 Special 234. 6-Inch Water Main-Granular Backfill	76.000 LF	_____.	_____.
2850	SPV.0090 Special 235. 8-Inch Water Main-Granular Backfill	1,031.500 LF	_____.	_____.
2860	SPV.0090 Special 236. 10-Inch Water Main-Granular Backfill	1,285.500 LF	_____.	_____.
2870	SPV.0090 Special 237. 12-Inch Water Main-Granular Backfill	5,302.500 LF	_____.	_____.
2880	SPV.0090 Special 245. 6-Inch Hydrant Lead	374.200 LF	_____.	_____.
2890	SPV.0090 Special 246. 1-Inch Water Service - Open Trench With Granular Backfill	2,691.500 LF	_____.	_____.
2900	SPV.0090 Special 249. 1 1/2-Inch Water Service - Open Trench With Granular Backfill	25.000 LF	_____.	_____.
2910	SPV.0090 Special 252. 2-Inch Water Service - Open Trench With Granular Backfill	15.000 LF	_____.	_____.



Proposal Schedule of Items

Proposal ID: 20161108005

Project(s): 1401-02-71, 1401-02-73

SECTION: 0001 Roadway Items

Alt Set ID: Alt Mbr ID:

Proposal Line Number	Item ID Description	Approximate Quantity and Units	Unit Price	Bid Amount
2920	SPV.0090 Special 255. Pipe Insulation	752.000 LF	_____.	_____.
2930	SPV.0105 Special 002. Survey Project 1401-02-71	LS	LUMP SUM	_____.
2940	SPV.0105 Special 003. Concrete Pavement Joint Layout	LS	LUMP SUM	_____.
2950	SPV.0105 Special 005. HABS Photographic Documentation	LS	LUMP SUM	_____.
2960	SPV.0105 Special 225. Abandon Sewage Lift Station	LS	LUMP SUM	_____.
2970	SPV.0105 Special 232. Hughes Sewage Lift Station	LS	LUMP SUM	_____.
2980	SPV.0105 Special 300. Remove Traffic Signal STH 16 and Industrial Drive/Dix Street	LS	LUMP SUM	_____.
2990	SPV.0105 Special 301. Remove Traffic Signal STH 16 and STH 73	LS	LUMP SUM	_____.
3000	SPV.0105 Special 302. Remove and Salvage Detection System STH 16 & Industrial Dr/Dix St	LS	LUMP SUM	_____.
3010	SPV.0105 Special 303. Transporting Department Furnished Monotube Equipment STH 16 & Indust/Dix	LS	LUMP SUM	_____.
3020	SPV.0105 Special 304. Furn & Inst Traffic Signal Cabinet & Controller STH 16 & Indust/Dix	LS	LUMP SUM	_____.
3030	SPV.0105 Special 305. Furn & Inst Traffic Signal Cabinet & Controller STH 16 and STH 73	LS	LUMP SUM	_____.
3040	SPV.0105 Special 306. Traffic Signal Systems Integrator	LS	LUMP SUM	_____.
3050	SPV.0135 Special 001. Vibration Monitoring	5.000 MON	_____.	_____.



Proposal Schedule of Items

Proposal ID: 20161108005

Project(s): 1401-02-71, 1401-02-73

SECTION: 0001 Roadway Items

Alt Set ID:

Alt Mbr ID:

Proposal Line Number	Item ID Description	Approximate Quantity and Units	Unit Price	Bid Amount
3060	SPV.0165 Special 001. Wall Modular Block Gravity LRFD	700.000 SF	_____	_____
3070	SPV.0170 Special 001. Pavement Cleanup Project 1401-02-71	150.000 STA	_____	_____
3080	SPV.0180 Special 001. Geogrid Reinforcement	47,300.000 SY	_____	_____
3090	SPV.0180 Special 228. Pulverizing, Removals, Shaping, and Compacting - Continental Drive	900.000 SY	_____	_____
3100	SPV.0180 Special 233. Asphaltic Pavement Removal - River Road	310.000 SY	_____	_____
3110	SPV.0195 Special 001. Excavation, Hauling and Disposal of Petroleum - Contaminated Soil	500.000 TON	_____	_____
3120	SPV.0195 Special 230. 1-3/4 Inch Asphaltic Concrete Binder Course - Continental Drive	102.000 TON	_____	_____
3130	SPV.0195 Special 231. 1-3/4 Inch Asphaltic Concrete Surface Course - Continental Drive	102.000 TON	_____	_____
3140	SPV.0195 Special 234. 1-3/4 Inch Asphaltic Concrete Binder Course - River Road	32.000 TON	_____	_____
3150	SPV.0195 Special 235. 1-3/4 Inch Asphaltic Concrete Surface Course - River Road	32.000 TON	_____	_____
3160	SPV.0200 Special 207. New 48-Inch Sanitary Sewer Manhole	133.000 VF	_____	_____
3170	SPV.0200 Special 208. New 48-Inch Sanitary Sewer Manhole (Outside Drop)	67.000 VF	_____	_____
3180	SPV.0200 Special 209. New 84-Inch Sanitary Sewer Manhole	7.000 VF	_____	_____



Proposal Schedule of Items

Proposal ID: 20161108005

Project(s): 1401-02-71, 1401-02-73

SECTION: 0001 Roadway Items

Alt Set ID: Alt Mbr ID:

Proposal Line Number	Item ID Description	Approximate Quantity and Units	Unit Price	Bid Amount
3190	SPV.0200 Special 210. 48-Inch Sanitary Sewer Manhole Replacement	91.000 VF	_____.	_____.
3200	SPV.0200 Special 211. 48-Inch Sanitary Sewer Manhole Replacement Outside Drop	15.000 VF	_____.	_____.
3210	SPV.0200 Special 212. 60-Inch Sanitary Sewer Manhole Replacement Outside Drop	11.000 VF	_____.	_____.
Section: 0001			Total:	_____.
			Total Bid:	_____.