



Wisconsin Department of Transportation

November 2, 2016

Division of Transportation Systems Development

Bureau of Project Development
 4802 Sheboygan Avenue, Rm 601
 P O Box 7916
 Madison, WI 53707-7916

Telephone: (608) 266-1631
 Facsimile (FAX): (608) 266-8459

NOTICE TO ALL CONTRACTORS:

**Proposal #30: 3360-09-72, WISC 2016 309
 Menomonee Falls – Slinger
 (Maple Rd to STH 60)
 STH 175
 Washington County**

Letting of November 8, 2016

This is Addendum No. 02, which provides for the following:

Schedule of Items

Revised Bid Item Quantities					
Bid Item	Item Description	Unit	Old Quantity	Revised Quantity	Proposal Total
204.0100	Removing Pavement	SY	22,567	-1,600	20,967
204.0165	Removing Guardrail	LF	7,289	-376	6,913
205.0100	Excavation Common	CY	63,937	-230	63,707
305.0110	Base Aggregate Dense ¾-Inch	TON	4,583	-15	4,568
305.0120	Base Aggregate Dense 1 ¼-Inch	TON	69,763	-390	69,373
521.0118	Culvert Pipe Corrugated Steel 18-Inch	LF	391	-114	277
521.1018	Apron Endwalls for Culvert Pipe Steel 18-Inch	EACH	14	-2	12
606.0200	Riprap Medium	CY	335	-19	316
614.2300	MGS Guardrail 3	LF	5,050	-125	4,925
614.2340	MGS Guardrail 3 L	LF	650	-225	425
614.2610	MGS Guardrail Terminal EAT	EACH	36	-3	33
624.0100	Water	MGAL	250	-2	248
628.1104	Erosion Bales	EACH	2,000	-100	1,900
628.1504	Silt Fence	LF	22,330	-370	21,960
628.1520	Silt Fence Maintenance	LF	44,660	-740	43,920
628.7555	Culvert Pipe Checks	EACH	74	-2	72
645.0120	Geotextile Type HR	SY	1,125	-90	1,035
650.4500	Construction Staking Subgrade	LF	23,200	-110	23,090
650.5000	Construction Staking Base	LF	23,200	-110	23,090
650.6000	Construction Staking Pipe Culverts	EACH	24	-1	23
650.9920	Construction Staking Slope Stakes	LF	23,200	-110	23,090
690.0150	Sawing Asphalt	LF	22,004	-612	21,392
SPV.0060	Special 01. MGS Guardrail Terminal EAT TL-2	EACH	2	-1	1

Added Bid Item Quantities					
Bid Item	Item Description	Unit	Old Quantity	Revised Quantity	Proposal Total
614.0370	Steel Plate Beam Guard Energy Absorbing Terminal	EACH	0	3	3

Deleted Bid Item Quantities					
Bid Item	Item Description	Unit	Old Quantity	Revised Quantity	Proposal Total
203.0200	Removing Old Structure (station) 02. 1004+43	LUMP	1	-1	0
527.0325	Pipe Arch Structural Plate 10-FT Span	LF	92	-92	0
606.0600	Grouted Riprap Medium	CY	12	-12	0
SPV.0060	Special 02. Mitered Ends for Pipe Arch 10-FT Span	EACH	2	-2	0

Plan Sheets

Revised Plan Sheets	
Plan Sheet	Plan Sheet Title (brief description of changes to sheet)
3	Project Overview (Removed Sta. 1004+15 – Sta. 1005+25 Reconstruction Area)
7	Typical Sections (Updated Stationing for Resurface Section)
13	Typical Sections (Updated Stationing for Top Reconstruction Section)
24	Construction Details (Removed Mitered End Detail)
27	Construction Details (Updated Stationing)
66	Plan Detail STH 175 (Removed Reconstruction Work at Sta. 1004+15 to Sta. 1005+25)
84	Erosion Control STH 175 (Removed EC at Sta. 1004+15 to Sta. 1005+25)
288	Miscellaneous Quantities (Updated Quantities: Removing Pavement & Removing Old Structure Station)
289	Miscellaneous Quantities (Updated Quantities: Removing Guardrail)
290	Miscellaneous Quantities (Updated Quantities: Earthwork)
291	Miscellaneous Quantities (Updated Quantities: Base Aggregate Dense ¾-Inch)
292	Miscellaneous Quantities (Updated Quantities: Base Aggregate Dense 1 ¼-Inch)
293	Miscellaneous Quantities (Removed Quantities: Pipe Arch Structural Plate 10-FT Span & Mitered Ends for Pipe Arch 10-FT Span, Updated Quantities: Culvert Pipe Corrugated Steel 18-Inch, Apron Endwalls for Culvert Pipe Steel 18-Inch)
296	Miscellaneous Quantities (Updated Quantities: Riprap Medium & Geotextile Fabric Type HR)
302	Miscellaneous Quantities (Updated Quantities: MGS Guardrail 3 L, MGS Guardrail Terminal EAT TL-2, MGS Guardrail 3, & MGS Guardrail Terminal EAT, Added Steel Beam Guard Energy Absorbing Terminal)
303	Miscellaneous Quantities (Updated Quantities: Water, Erosion Bales, Silt Fence, Silt Fence Maintenance, & Culvert Pipe Checks)
311	Miscellaneous Quantities (Updated Construction Staking Pipe Culverts Quantity)
312	Miscellaneous Quantities (Updated Quantities: Construction Staking Subgrade, Construction Staking Base, & Construction Staking Slope Stakes)
313	Miscellaneous Quantities (Updated Sawing Asphalt Quantity)
563	Earthwork: Mainline (Removed Sta. 1004+15 – Sta. 1005+25 Earthwork)
589	Cross Sections: STH 175 (Updated Cross Sections)
590	Cross Sections: STH 175 (Updated Cross Sections)
591	Cross Sections: STH 175 (Updated Cross Sections)

Added Plan Sheets	
Plan Sheet	Plan Sheet Title (brief description of why sheet was added)
420A-C	SDD – Steel Plate Beam Guard Energy Absorbing Terminal

Schedule of Items

Attached, dated November 2, 2016, are the revised Schedule of Items. All pages of the Schedule of Items are being replaced.

Plan Sheets

The following 8½ x 11-inch sheets are attached and made part of the plans for this proposal:

Revised: 3, 7, 13, 24, 27, 66, 84, 288 - 293, 296, 302, 303, 311 - 313, 563, and 589 - 591

Added: 420A – 420C.

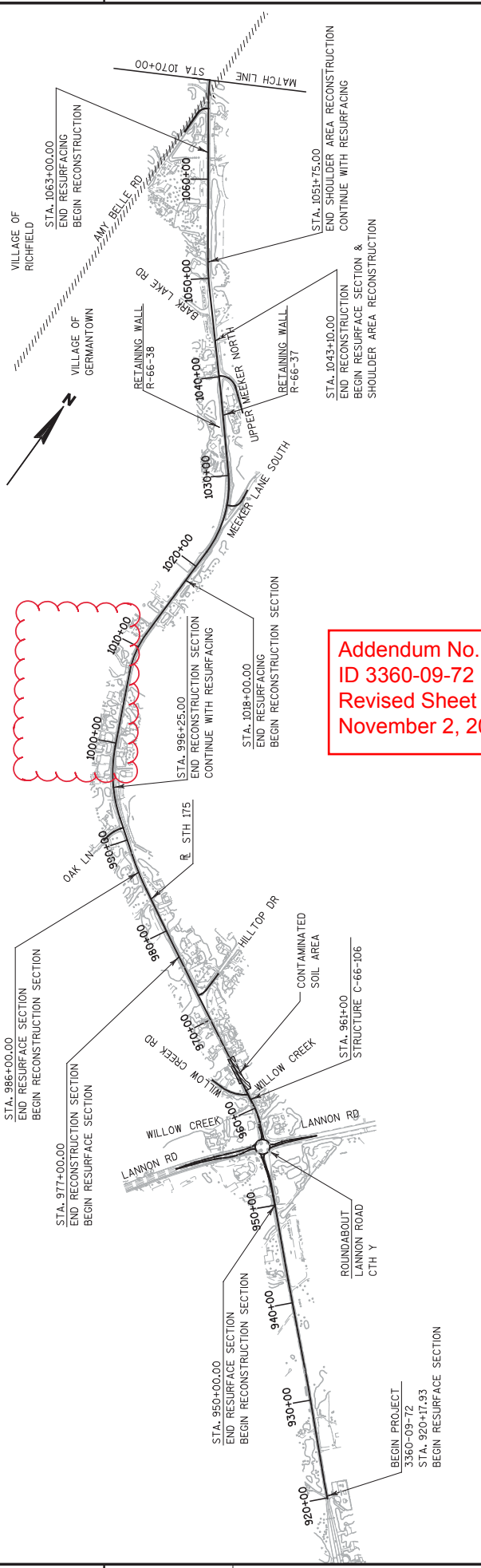
The responsibility for notifying potential subcontractors and suppliers of these changes remains with the prime contractor.

Sincerely,

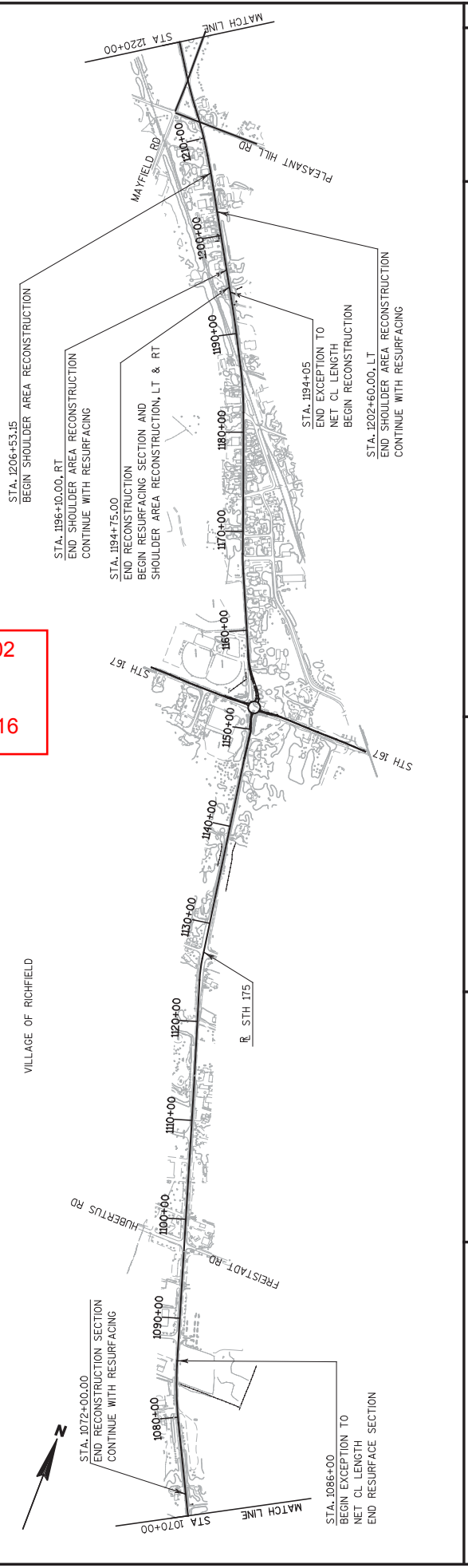
Mike Coleman

Proposal Development Specialist
 Proposal Management Section

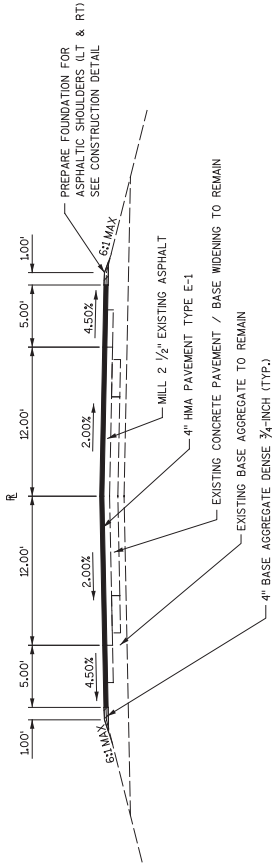
END OF ADDENDUM



Addendum No. 02
 ID 3360-09-72
 Revised Sheet 3
 November 2, 2016



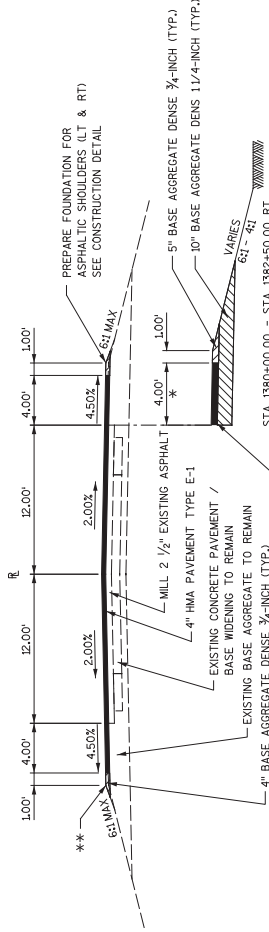
PROJECT NO: 3360-09-72	COUNTY: WASHINGTON	PROJECT OVERVIEW	SHEET 3
HWY: STH 175		PLOT NAME :	
FILE NAME : M:\X-Proj\ets\RD\140\proj\et 2 dgn\020201.pn.dgn		PLOT SCALE : 1:1000.0000 sf / in.	
PLOT DATE : 10/31/2016		PLOT BY : Isander	
WISDOT/CADD SHEET 42			



TYPICAL FINISHED SECTION - RESURFACE SECTION

STA. 920+17.93 - STA. 950+00.00

** STA. 1253+00 - STA. 1256+00, LT
PREPARE FOUNDATION FOR ASPHALTIC
SHOULDERS SPECIAL.
SEE CONSTRUCTION DETAILS



*NOTE: STA. 1079+08.42 - STA. 1081+95.71, RT
5 1/2\"/>

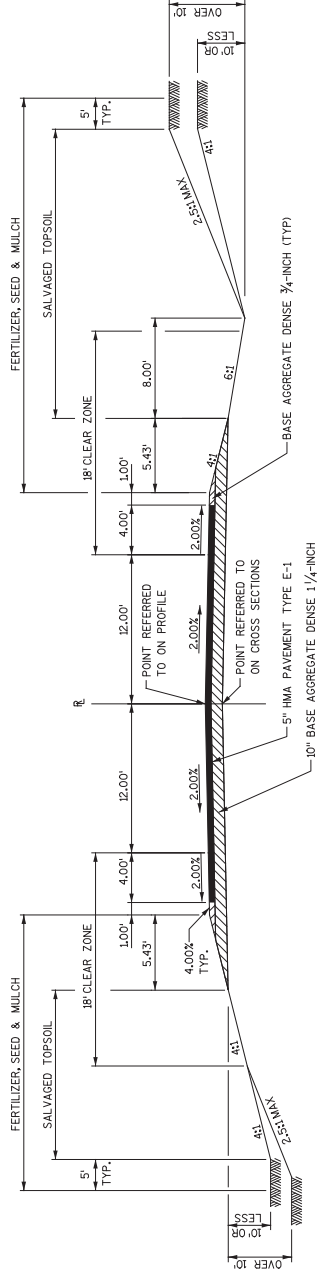
TYPICAL FINISHED SECTION - RESURFACE SECTION

STA. 974+00.00 - STA. 985+00.00
 STA. 985+00.00 - STA. 995+00.00
 STA. 995+00.00 - STA. 1005+00.00
 STA. 1005+00.00 - STA. 1015+00.00
 STA. 1015+00.00 - STA. 1025+00.00
 STA. 1025+00.00 - STA. 1035+00.00
 STA. 1035+00.00 - STA. 1045+00.00
 STA. 1045+00.00 - STA. 1055+00.00
 STA. 1055+00.00 - STA. 1065+00.00
 STA. 1065+00.00 - STA. 1075+00.00
 STA. 1075+00.00 - STA. 1085+00.00
 STA. 1085+00.00 - STA. 1095+00.00
 STA. 1095+00.00 - STA. 1105+00.00
 STA. 1105+00.00 - STA. 1115+00.00
 STA. 1115+00.00 - STA. 1125+00.00
 STA. 1125+00.00 - STA. 1135+00.00
 STA. 1135+00.00 - STA. 1145+00.00
 STA. 1145+00.00 - STA. 1155+00.00
 STA. 1155+00.00 - STA. 1165+00.00
 STA. 1165+00.00 - STA. 1175+00.00
 STA. 1175+00.00 - STA. 1185+00.00
 STA. 1185+00.00 - STA. 1195+00.00
 STA. 1195+00.00 - STA. 1205+00.00
 STA. 1205+00.00 - STA. 1215+00.00
 STA. 1215+00.00 - STA. 1225+00.00
 STA. 1225+00.00 - STA. 1235+00.00
 STA. 1235+00.00 - STA. 1245+00.00
 STA. 1245+00.00 - STA. 1255+00.00
 STA. 1255+00.00 - STA. 1265+00.00
 STA. 1265+00.00 - STA. 1275+00.00
 STA. 1275+00.00 - STA. 1285+00.00
 STA. 1285+00.00 - STA. 1295+00.00
 STA. 1295+00.00 - STA. 1305+00.00
 STA. 1305+00.00 - STA. 1315+00.00
 STA. 1315+00.00 - STA. 1325+00.00
 STA. 1325+00.00 - STA. 1335+00.00
 STA. 1335+00.00 - STA. 1345+00.00
 STA. 1345+00.00 - STA. 1355+00.00
 STA. 1355+00.00 - STA. 1365+00.00
 STA. 1365+00.00 - STA. 1375+00.00
 STA. 1375+00.00 - STA. 1385+00.00
 STA. 1385+00.00 - STA. 1395+00.00
 STA. 1395+00.00 - STA. 1405+00.00
 STA. 1405+00.00 - STA. 1415+00.00
 STA. 1415+00.00 - STA. 1425+00.00
 STA. 1425+00.00 - STA. 1435+00.00
 STA. 1435+00.00 - STA. 1445+00.00
 STA. 1445+00.00 - STA. 1455+00.00
 STA. 1455+00.00 - STA. 1465+00.00
 STA. 1465+00.00 - STA. 1475+00.00
 STA. 1475+00.00 - STA. 1485+00.00
 STA. 1485+00.00 - STA. 1495+00.00
 STA. 1495+00.00 - STA. 1505+00.00

Addendum No. 02
ID 3360-09-72
Revised Sheet 7
November 2, 2016

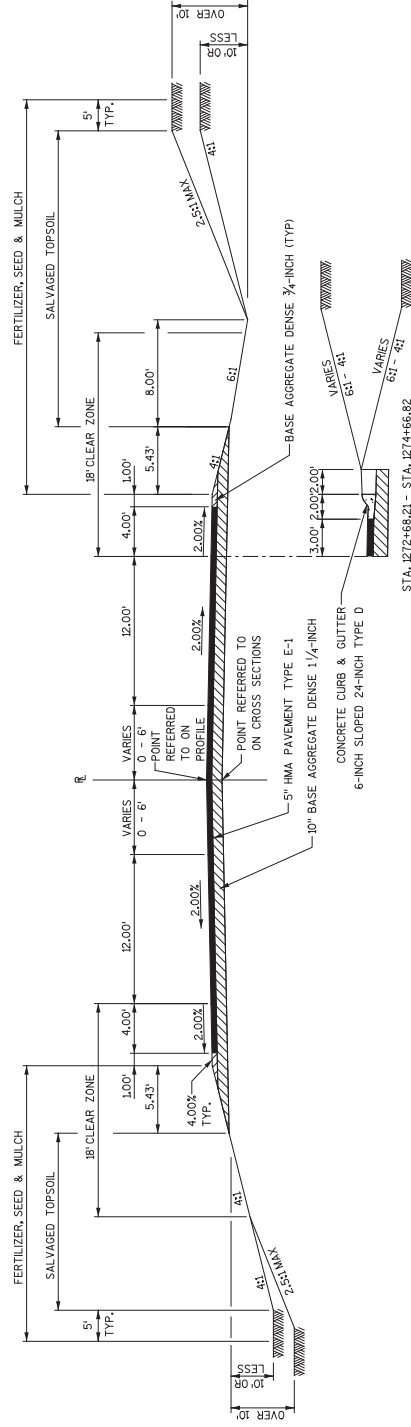
FINISHING NOTE:

IN GENERAL; USE "500 LAWN" BEHIND CURB & GUTTER WHERE THERE IS EXISTING LAWN.
USE "SEEDING MIXTURE NO.40" AT SHOULDERS WHERE THERE IS EXISTING LAWN.
USE "SEEDING MIXTURE NO.30" IN REMAINING AREAS.
FINAL DETERMINATION TO BE MADE BY THE ENGINEER IN THE FIELD.



TYPICAL FINISHED SECTION - RECONSTRUCT SECTION

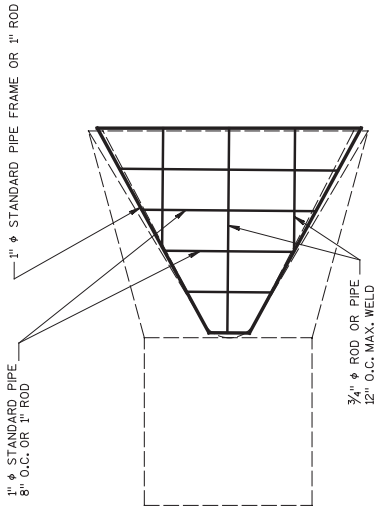
- STA. 1316+00.00 - STA. 1318+79.51, LT
- STA. 1324+55.08 - STA. 1325+10.00, LT
- STA. 1393+00.00 - STA. 1395+55.57, LT
- STA. 1399+25.26 - STA. 1402+00.00, RT
- STA. 1401+34.15 - STA. 1402+00.00, LT
- STA. 1470+69.41 - STA. 1473+00.00, RT



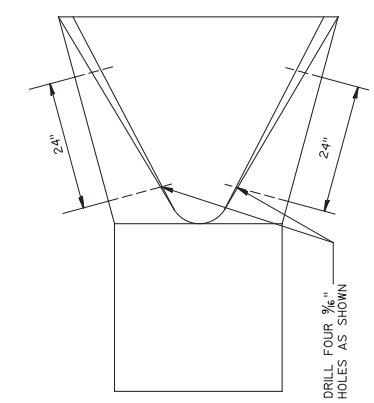
TYPICAL FINISHED SECTION - RECONSTRUCT SECTION

- STA. 1269+50.00 - STA. 1283+60.00
- STA. 1272+68.21 - STA. 1274+66.82

Addendum No. 02
ID 3360-09-72
Revised Sheet 13
November 2, 2016

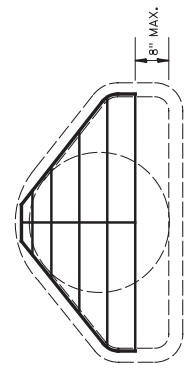
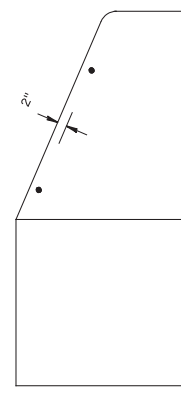


AT EACH PIPE



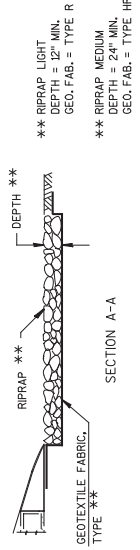
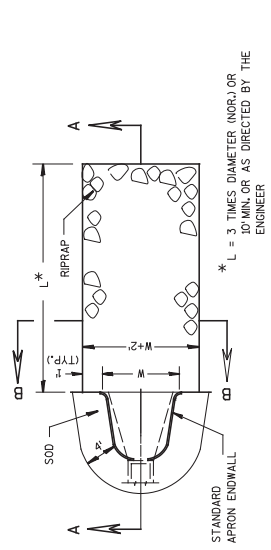
BOLT GRATE TO CONCRETE ENDWALL WITH FOUR 3/8" X 6" MACHINE BOLTS PLACE NUTS INSIDE

6" X 4" X 1/4" ANGLES (4 REQ'D.) WELD TO FRAME PROVIDE 1/8" HOLE IN EACH

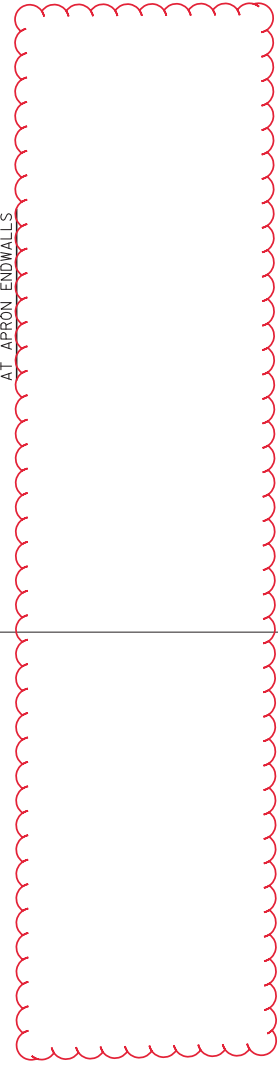


PIPE GRATE DETAIL

Addendum No. 02
ID 3360-09-72
Revised Sheet 24
November 2, 2016



SOD, RIPRAP AND GEOTEXTILE FABRIC DETAIL AT APRON ENDWALLS



GENERAL NOTES

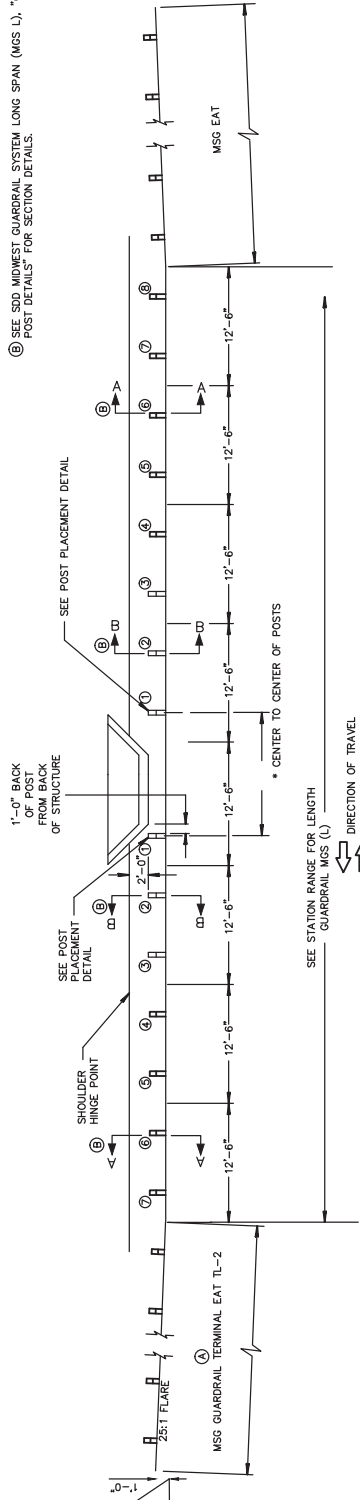
POSTS 1 THROUGH 3 ARE CRT POSTS. ALL OTHER POSTS SHALL BE WOOD OR STEEL.

SEE SDD MIDWEST GUARDRAIL SYSTEM LONG SPAN (MGS L) FOR MORE DETAILS. VALUES SHOWN IN THIS DRAWING REPRESENT THE 100 FT MGS GUARDRAIL LONG SPAN SYSTEM. SEE SDD MIDWEST GUARDRAIL SYSTEM LONG SPAN (MGS L) FOR 112.5 FT MGS GUARDRAIL SYSTEM.

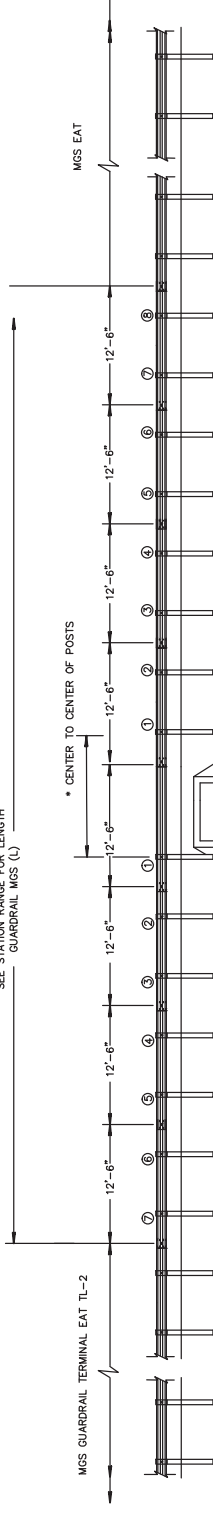
① PLACE THE MGS GUARDRAIL TERMINAL TL-2 IN THE SOUTHWEST QUADRANT ONLY, STA 1004+20.60 LT AND STA 1194+07.11 LT.

② SEE SDD MIDWEST GUARDRAIL SYSTEM LONG SPAN (MGS L), "CROSS SECTION AND CRT POST DETAILS" FOR SECTION DETAILS.

EXISTING DRIVEWAY AT STA 1193+83 LT



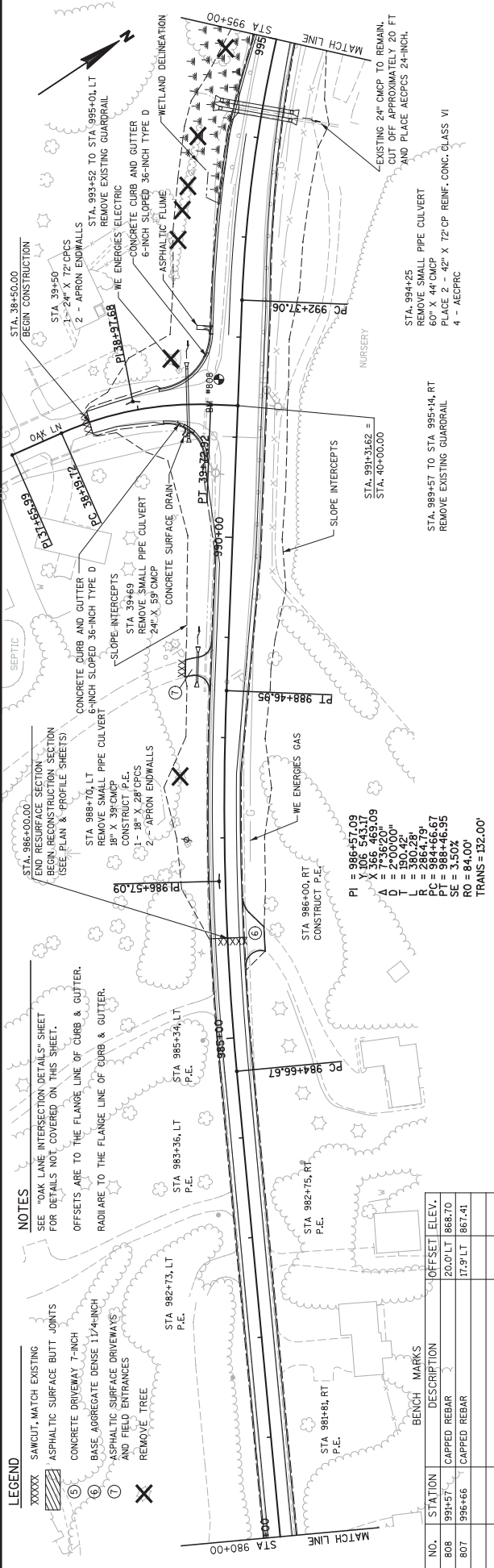
SEE STATION RANGE FOR LENGTH GUARDRAIL MGS (L)
DIRECTION OF TRAVEL
PLAN VIEW



SEE STATION RANGE FOR LENGTH GUARDRAIL MGS (L)
DIRECTION OF TRAVEL
ELEVATION VIEW

Addendum No. 02
ID 3360-09-72
Revised Sheet 27
November 2, 2016

MIDWEST GUARDRAIL SYSTEM LONG SPAN MGS (L) TWO-WAY TRAFFIC
STA 1194+32.11 - STA 1195+32.11 LT, LENGTH = 100 FT, * = 12.5'
STA 1194+33.07 - STA 1195+33.08 RT, LENGTH = 100 FT, * = 12.5'
STA 1244+44.96 - STA 1245+58.79 LT, LENGTH = 112.5 FT, * = 15'
STA 1244+51.11 - STA 1245+62.23 RT, LENGTH = 112.5 FT, * = 15'



LEGEND

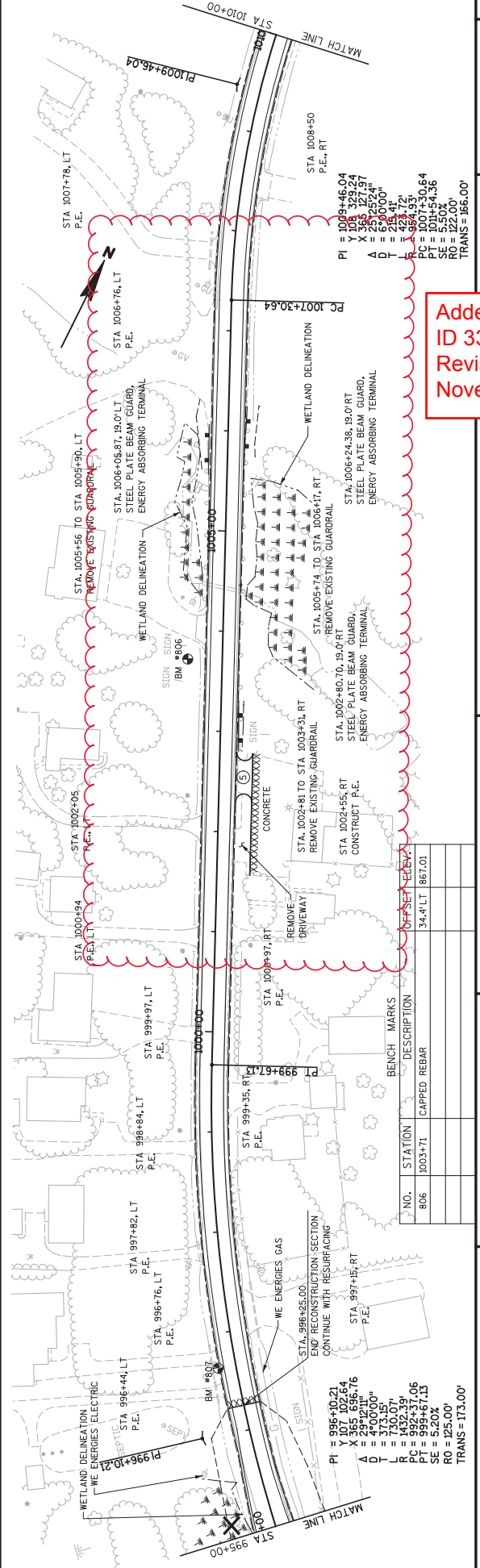
- XXXXX SAWTOOTH MATCH EXISTING
- ⑤ ASPHALTIC SURFACE BUTT JOINTS
- ⑥ CONCRETE DRIVEWAY 7-INCH
- ⑦ BASE AGGREGATE DENSE 1 1/4-INCH ASPHALTIC SURFACE DRIVEWAYS AND FIELD ENTRANCES
- ⊗ REMOVE TREE

NOTES

SEE "OAK LANE INTERSECTION DETAILS" SHEET FOR DETAILS NOT COVERED ON THIS SHEET.

OFFSETS ARE TO THE FLANGE LINE OF CURB & GUTTER. RADIARE TO THE FLANGE LINE OF CURB & GUTTER.

NO.	STATION	DESCRIPTION	OFFSET ELEV.
808	991+57	CAPPED REBAR	20.0' LT 868.70
807	996+66	CAPPED REBAR	17.9' LT 867.41



LEGEND

- XXXXX SAWTOOTH MATCH EXISTING
- ⑤ ASPHALTIC SURFACE BUTT JOINTS
- ⑥ CONCRETE DRIVEWAY 7-INCH
- ⑦ BASE AGGREGATE DENSE 1 1/4-INCH ASPHALTIC SURFACE DRIVEWAYS AND FIELD ENTRANCES
- ⊗ REMOVE TREE

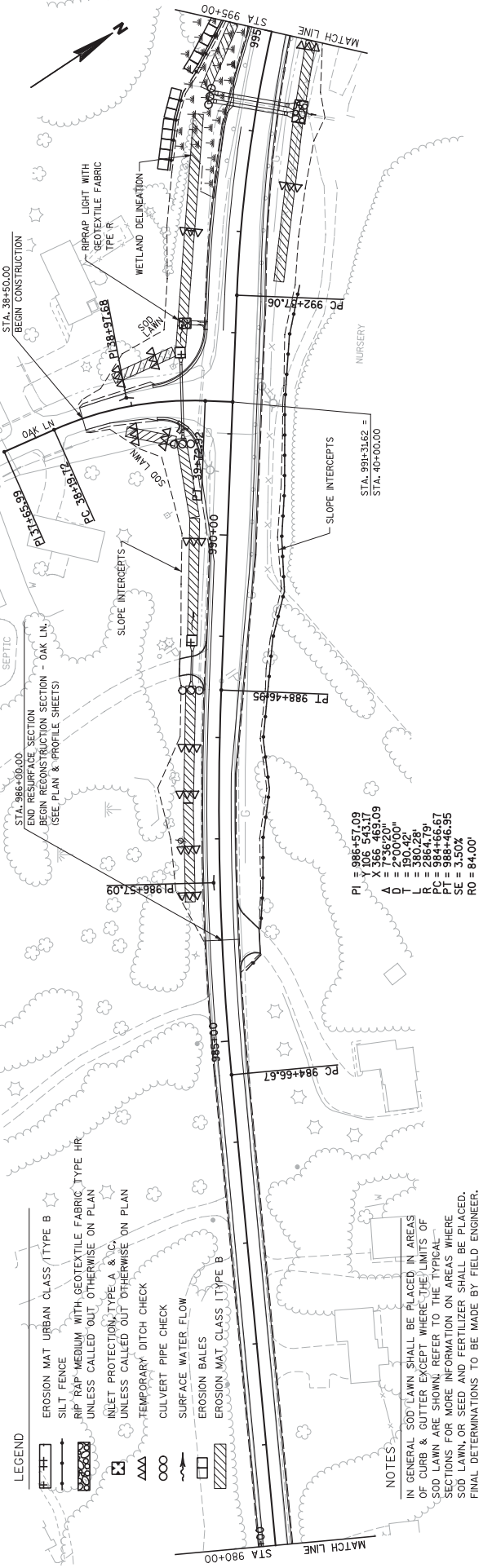
NOTES

SEE "OAK LANE INTERSECTION DETAILS" SHEET FOR DETAILS NOT COVERED ON THIS SHEET.

OFFSETS ARE TO THE FLANGE LINE OF CURB & GUTTER. RADIARE TO THE FLANGE LINE OF CURB & GUTTER.

NO.	STATION	DESCRIPTION	OFFSET ELEV.
808	991+57	CAPPED REBAR	20.0' LT 868.70
807	996+66	CAPPED REBAR	17.9' LT 867.41

Addendum No. 02
ID 3360-09-72
Revised Sheet 66
November 2, 2016



- LEGEND**
- EROSION MAT URBAN CLASS (TYPE B)
 - SILT FENCE
 - RIP RAP MEDIUM WITH GEOTEXTILE FABRIC TYPE HR UNLESS CALLED OUT OTHERWISE ON PLAN
 - INLET PROTECTION TYPE A & C UNLESS CALLED OUT OTHERWISE ON PLAN
 - TEMPORARY DITCH CHECK
 - CULVERT PIPE CHECK
 - SURFACE WATER FLOW
 - EROSION BALES
 - EROSION MAT CLASS I (TYPE B)

NOTES:
 IN GENERAL SOD/LAWN SHALL BE PLACED IN AREAS OF CURB & GUTTER EXCEPT WHERE THE LIMITS OF SOD/LAWN ARE SHOWN. REFER TO THE TYPICAL SECTIONS FOR MORE INFORMATION ON AREAS WHERE SOD/LAWN, OR SEED AND FERTILIZER SHALL BE PLACED. FINAL DETERMINATIONS TO BE MADE BY FIELD ENGINEER.

PI = 986+57.09
 X = 106 543.17
 Y = 366 469.09
 A = 7+36.20"
 T = 100.40"
 L = 380.28'
 R = 2864.79'
 PC = 984+66.67
 PT = 984+66.95
 SE = 3.50%
 RO = 84.00'

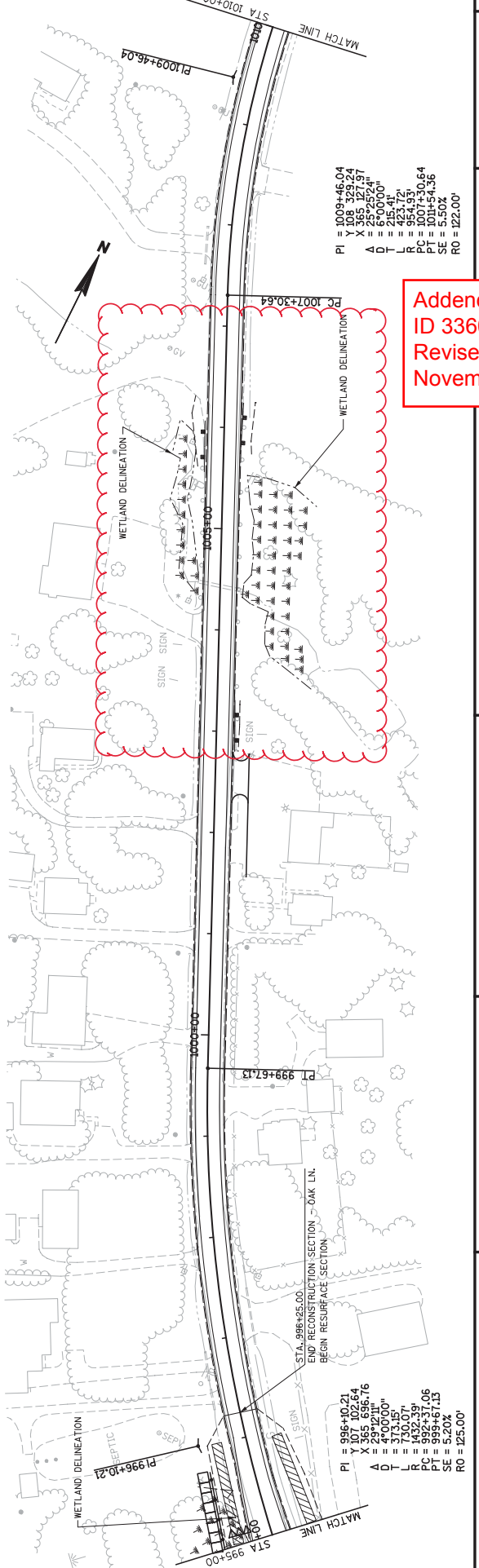


STA. 38+50.00
 BEGIN CONSTRUCTION

STA. 986+00.00
 END RESURFACE SECTION
 BEGIN RECONSTRUCTION SECTION - OAK LN.
 (SEE PLAN & PROFILE SHEETS)

STA. 996+25.00
 END RECONSTRUCTION SECTION - OAK LN.
 BEGIN RESURFACE SECTION

PI = 1009+46.04
 X = 108 329.24
 Y = 258 727.17
 A = 6+00.00"
 T = 225.41"
 L = 225.41'
 R = 1632.39'
 PC = 1007+30.64
 PT = 1011+54.36
 SE = 5.50%
 RO = 122.00'



PI = 996+10.21
 X = 107 102.64
 Y = 297 627.30
 A = 297.30"
 T = 373.05"
 L = 730.07'
 R = 1632.39'
 PC = 996+67.06
 PT = 996+67.15
 SE = 5.20%
 RO = 125.00'

PI = 1009+46.04
 X = 108 329.24
 Y = 258 727.17
 A = 6+00.00"
 T = 225.41"
 L = 225.41'
 R = 1632.39'
 PC = 1007+30.64
 PT = 1011+54.36
 SE = 5.50%
 RO = 122.00'

Addendum No. 02
 ID 3360-09-72
 Revised Sheet 84
 November 2, 2016

201.0105 201.0205

Table with columns: STATION, LOCATION, CLEARING (STA), GRUBBING (STA), TOTALS. Includes rows for various stationing and locations like MAINLINE, LT & RT, etc.

204.0100 REMOVING PAVEMENT

Table with columns: STATION, LOCATION, SY. Includes rows for stationing from 950+00.00 to 1443+00.00 and locations like MAINLINE, PLEASANT HILL RD, etc.

REMOVING OLD STRUCTURE STATION

Table with columns: ITEM NO., STATION, LS, DESCRIPTION. Includes items 203.0200.01 through 203.0200.04 with descriptions like 60' X 44' CNCP, etc.

521.1024 APRON ENDWALLS FOR CULVERT

Table with columns: STATION, LOCATION, DESCRIPTION, QUANTITY. Includes rows for stationing from 950+05 to 1080+81 and descriptions like 30' X 48' CNCP, etc.

203.0100 REMOVING SMALL PIPE CULVERTS

Table with columns: STATION, LOCATION, DESCRIPTION, QUANTITY. Includes rows for stationing from 950+05 to 1080+81 and descriptions like 10' X 30' X 15' RECPRC, etc.

204.0125 REMOVING ASPHALTIC SURFACE MILLING

Table with columns: STATION, LOCATION, CLEARING (STA), GRUBBING (STA), TOTALS. Includes rows for stationing from 921+42.93 to 1305+00.00 and locations like MAINLINE, MAYFIELD RD, etc.

CLEARING AND GRUBBING

Summary table with columns: STATION, LOCATION, CLEARING (LD), GRUBBING (LD), TOTALS. Includes rows for stationing 1794+20, 960+05, 969+30 and a TOTALS row.

Addendum No. 02 ID 3360-09-72 Revised Sheet 288 November 2, 2016

NOTE: ALL ITEMS ARE CATEGORY 0010, UNLESS OTHERWISE NOTED.

COUNTY: WASHINGTON

HWY: STH 175

STATE PROJECT NUMBER: 3360-09-72

MISCELLANEOUS QUANTITIES

SHEET NO: 288

FILE NAME: W:\Projects\RD\1740\Project 2.dgn\030201_mq.dwg

PLOT DATE: Nov 01, 2016

PLOT BY: Isander

ROTATION:

Addendum No. 02
ID 3360-09-72
Revised Sheet 290
November 2, 2016

Stage	From/To Station	Location	Common Excavation (1)		EBS Excavation (3)	Salvaged/Unusable Pavement Material (4)	Available Material (5)	Marsh Excavation (6)	Unexpanded Fill	Expanded Fill (1.20)	Mass Ordinate +/- (14)	Waste (15)	Borrow	Comments
			Cut (2)	(CY)										
Stage 1	863+00 to 877+00	STH 175	5,806	0	0	2,007	3,894	0	251	301	3,598	3,598		Subtracted 512 CY from common exc to account for contaminated soil at STA. 963+00 to 965+00.
	878+00 to 896+00	STH 175	3,869	0	0	1,055	2,794	0	326	336	1,007	2,794		
	1018+00 to 1051+75	STH 175	9,436	3,150	0	2,817	9,769	0	8,531	10,237	-468	2,692		
	1063+00 to 1072+00	STH 175	3,616	0	0	1,095	2,521	0	486	584	1,937	1,937		
	1084+00 to 1092+00	STH 175	1,305	0	0	1,068	1,305	0	681	818	-487	487		
	1208+50 to 1220+00	STH 175	92	0	0	92	92	0	967	1,161	-1,069	-1,069		
	1242+65 to 1247+00	STH 175	0	0	0	0	0	0	58	70	-70	-70		
	1253+00 to 1256+00	STH 175	0	0	0	0	0	0	450	540	1,479	1,479		
	1269+50 to 1283+63	STH 175	3,751	0	0	1,732	2,019	0	365	438	227	227		
	1316+00 to 1325+10	STH 175	1,794	0	0	1,129	665	0	509	611	1,060	1,060		
	1328+00 to 1338+50	STH 175	1,671	0	0	1,671	1,671	0	203	243	-39	-39		
	1368+00 to 1374+00	STH 175	204	0	0	204	204	0	33	33	1,171	1,171		
	1380+00 to 1390+00	STH 175	1,204	0	0	1,204	1,204	0	451	541	1,321	1,321		
	1393+00 to 1402+00	STH 175	3,024	0	0	1,621	1,403	0	780	936	-653	-653		
	1443+00 to 1452+00	STH 175	1,335	0	0	1,032	283	0	14	17	353	353		
1485+50 to 1505+00	STH 175	3,370	0	0	370	3,000	0	1,031	1,237	-1,114	-1,114			
130+00 to 133+00	Hilltop Rd	265	0	0	142	123	0	38	45	529	529			
38+50 to 40+00	Oak Ln	625	0	0	53	572	0	910	1,092	-992	-992			
60+00 to 62+25	Meeker Lane (South)	149	0	0	49	100	0	13	15	826	826			
70+00 to 72+50	Meeker Lane (North)	931	0	0	90	841	0	14	17	1,687	1,687			
17+50 to 20+00	Amy Belle Rd	1,826	0	0	122	1,704	0	54	65	540	540			
47+60 to 51+67.30	Pleasant Hill Rd	605	0	0	605	605	0	66	79	67	67			
48+09.30 to 52+03.10	Mayfield Rd	148	0	0	205	84	0	273	328	486	486			
118+50 to 126+00	Pioneer Rd	1,029	0	0	82	229	0	87	105	124	124			
9+00 to 10+00	Scenic Rd (South)	311	0	0	133	0	0	17	20	113	113			
40+00 to 50+00	Fond du Lac Dr	133	0	0	98	0	0	26	31	68	68			
50+00 to 51+75	Western Ave	17	0	0	17	0	0	763	916	-899	-899			
50+00 to 51+74.09	Scenic Rd (North)	864	0	0	78	866	0	392	470	416	416			
18+42 to 21+60	Hillside Rd	303	0	0	0	0	0	0	0	0	0			
10+00 to 11+65	Sherman Rd	45,454	3,248	0	13,053	32,401	0	18,920	22,706	9,695	12,943			
148+00 to 162+20	Lannon Rd	2,453	0	0	933	1,566	0	1,274	1,225	-541	-541			
178+25 to 178+71	Willow Creek Rd	869	0	0	60	909	0	1,256	1,507	-598	-598			
Stage 2A	957+00 to 963+00	STH 175	1,543	0	0	885	658	0	595	715	-57	-57		
Stage 2A	148+00 to 162+20	Lannon Rd	2,721	0	0	739	1,982	0	1,223	1,469	513	513		
Stage 2B	950+00 to 955+00	STH 175	2,040	0	0	632	1,388	0	188	236	1,150	1,150		
Stage 2C	154+50 to 155+50	Lannon Rd	2,273	0	0	185	868	0	253	303	-215	-215		
Grand Total	UNDISTRIBUTED		55,459	5,000	0	16,527	38,932	0	25,719	30,867	8,065	11,313		

1) Common Excavation is the sum of the Cut and EBS Excavation columns. Item number 205.0100
 2) Salvaged/Unusable Pavement Material is included in Cut. This assumes the existing pavement is salvaged or wasted by the contractor.
 The existing pavement structure is not shown in the cross sections.
 3) EBS Excavation to be backfilled with Breaker Run paid for as Item number 311.0110 Breaker Run
 4) Salvaged/Unusable Pavement Material.
 5) Available Material = Cut - Salvaged/Unusable Pavement Material
 6) Marsh Excavation. Item number 205.0400
 7) Expanded Fill. Fill Factor = 1.20
 14) Mass Ordinate = Available Material - Expanded Fill. Plus quantity indicates an excess of material. Minus indicates a shortage of material.
 15) Waste = Mass Ordinate + EBS Excavation
 * FOR INFORMATIONAL PURPOSES ONLY

NOTE: ALL ITEMS ARE CATEGORY 0010, UNLESS OTHERWISE NOTED.

Addendum No. 02
ID 3360-09-72
Revised Sheet 293
November 2, 2016

ASPHALTIC ITEMS table with columns: STAGE, STATION, LOCATION, TACK COAT (GAL), HMA PAVEMENT, HMA PAVEMENT, HMA PAVEMENT, REGRESSION, REGRESSION, REGRESSION, (TON), (TON), (TON)

465.0315 ASPHALTIC FLUMES table with columns: STATION, LOCATION, (CY), (SY)

416.1010 CONCRETE SURFACE DRAINS table with columns: STATION, LOCATION, (CY), (CY)

CULVERT PIPE table with columns: STATION, LOCATION, 521.0115, 521.0118, 521.0124, 521.1015, 521.1018, 521.1024

601.0557
CONCRETE CURB & GUTTER 6-INCH SLOPED 36-INCH TYPE D

STATION	STATION	LOCATION	(LF)
178+71	179+71	WILLOW CREEK RD, LT & RT	147
962+75	972+05	MAINLINE, RT	931
962+66	977+00	MAINLINE, LT	1401
130+26	130+84	HILLTOP RD, LT & RT	364
39+25	39+74	OAK LN, LT & RT	148
1020+50	1025+32.50	MAINLINE, RT	580
1027+54.5	1039+35	MAINLINE, RT	1180
1020+60	1030+10	MAINLINE, LT	2368
70+16	80+71	MEEKER HILL RD, S, LT & RT	132
70+16	70+65	MEEKER HILL RD, N, LT & RT	132
1063+25	1066+28	MAINLINE, LT	280
1063+25	1071+38	MAINLINE, RT	901
17+50	19+75	AMY BELLE RD, RT	206
19+40	19+75	AMY BELLE RD, LT	69
1196+40	1202+60	MAINLINE, LT	620
1210+34	1211+12	MAINLINE, LT	78
48+77	50+00	PLEASANT HILL RD, LT & RT	137
50+00	51+50	PLEASANT HILL RD, LT & RT	274
121+85	1216+00	MAINLINE, RT	383
48+66	49+81	MAYFIELD RD, LT & RT	88
50+08	51+38	MAYFIELD RD, LT & RT	86
119+10	119+84	PIONEER RD, LT & RT	154
120+15	120+50	PIONEER RD, LT	2
130+50	130+50	MAINLINE, RT	85
84+77	84+75	MAINLINE, RT	166
1330+15.24	1333+27	SCENIC DR, SOUTH, LT & RT	314
48+77	49+39	FOND DU LAC DR, LT & RT	168
50+15	50+98	WESTERN AVE, LT & RT	138
1334+41	1335+14	MAINLINE, RT	55
50+10	51+13	SCENIC DR, NORTH, LT & RT	90
1382+50	1389+50	MAINLINE, RT	700
1393+25	1396+92	MAINLINE, RT	366
19+33	20+92	HILLSIDE RD, LT & RT	101
20+08	20+92	HILLSIDE RD, LT & RT	133
1397+84	1399+84	MAINLINE, LT	201
1443+50	1447+27	MAINLINE, RT	377
1443+50	1451+50	MAINLINE, LT	806
104+90	119+50	MAINLINE, LT & RT	250
140+90	140+90	MAINLINE, RT	250
200+26	200+84	FOXBORO LANE	150
TOTAL			15,925

STATION	STATION	LOCATION	RIPRAP LIGHT (CY)	RIPRAP MEDIUM (CY)	W X L (FT)	GEOTEXTILE FABRIC TYPE R (SY)	645.0120	645.0130
950+00	950+00	MAINLINE, RT	3.7	---	10 X 10	---	---	16
952+10	952+10	MAINLINE, RT	3.6	---	6 X 16	---	---	18
954+53	954+53	MAINLINE, LT	3.6	---	6 X 16	---	---	18
153+35	153+35	LANNON RD, RT	3.0	---	8 X 10	---	---	13
158+75	158+75	LANNON RD, RT	2.2	---	6 X 10	---	---	11
160+54	160+54	LANNON RD, LT	2.2	---	6 X 10	---	---	11
957+60	957+60	MAINLINE, LT	---	4.7	7.5 X 10	16	---	---
959+40	959+40	MAINLINE, LT	4.5	---	6 X 20	---	---	12
959+75	959+75	MAINLINE, RT	2.4	---	6 X 11	---	---	12
960+95	960+95	MAINLINE, RT	4.4	---	6 X 20	---	---	20
961+00	961+00	MAINLINE, LT	---	18.0	9 X 38	56	---	---
961+25	961+25	MAINLINE, RT	---	---	---	80	---	---
976+70	976+70	MAINLINE, RT	---	132	11 X 135	310	---	---
981+35	981+35	MAINLINE, RT	1.1	---	8 X 8	---	---	6
982+05	982+05	MAINLINE, LT	2.4	---	8 X 8	---	---	11
1020+45	1020+45	MAINLINE, RT	2.4	---	8 X 8	---	---	11
1020+45	1020+45	MAINLINE, LT	2.4	---	8 X 8	---	---	11
1023+25	1023+25	MAINLINE, LT	---	10.4	7.5 X 25	34	---	---
1026+00	1026+00	MAINLINE, LT	---	20.8	7.5 X 50	65	---	---
60+50	60+50	MEEKER HILL LN, RT	---	6.0	9 X 12	23	---	---
1028+00	1028+00	MAINLINE, LT	---	8.5	9 X 17	30	---	---
1044+04	1044+04	MAINLINE, LT	2.2	---	6 X 10	---	---	11
1065+00	1065+00	MAINLINE, RT	3.0	---	6 X 10	---	---	13
1071+50	1071+50	MAINLINE, RT	1.8	---	6 X 8	---	---	9
1080+15	1080+15	MAINLINE, LT	7.4	---	6 X 25	---	---	30
1196+30	1196+30	MAINLINE, LT	4.4	---	6 X 25	---	---	30
1209+00	1209+00	PIONEER RD, LT	4.4	---	9 X 9	16	---	---
1279+00	1279+00	MAINLINE, RT	---	4.5	---	80	---	---
1279+40	1279+40	MAINLINE, RT	---	---	---	53	---	---
1260+45	1260+45	MAINLINE, LT	---	19.6	22 X 16	53	---	---
1316+30	1316+30	MAINLINE, RT	---	19.4	10 X 35	55	---	---
1330+11	1330+11	MAINLINE, RT	2.2	---	6 X 10	---	---	11
50+65	50+65	WESTERN AVE, LT	1.8	---	6 X 8	---	---	9
51+02	51+02	WESTERN AVE, RT	1.8	---	6 X 8	---	---	9
50+50	50+50	SCENIC DR, NORTH, RT	2.2	---	6 X 10	---	---	11
1337+55	1337+55	MAINLINE, RT	---	7.3	11 X 12	23	---	---
1382+48	1382+48	MAINLINE, RT	---	1.8	---	---	---	9
1389+54	1389+54	MAINLINE, RT	---	1.8	---	---	---	9
1395+60	1395+60	MAINLINE, LT	---	6.0	6 X 6	23	---	---
1395+60	1395+60	MAINLINE, LT	---	7.8	14 X 10	25	---	---
1396+46	1396+46	MAINLINE, LT	---	7.8	14 X 10	25	---	---
19+72	19+72	HILLSIDE RD, LT	2.2	---	6 X 10	---	---	11
20+60	20+60	HILLSIDE RD, RT	2.2	---	6 X 10	---	---	11
1398+50	1398+50	MAINLINE, LT	---	6.7	10 X 12	22	---	---
TOTALS			80	316	---	1035	342	---

NOTE: ALL ITEMS ARE CATEGORY 0010, UNLESS OTHERWISE NOTED.

STATE PROJECT NUMBER: 3360-09-72

HWY: STH 175

COUNTY: WASHINGTON

MISCELLANEOUS QUANTITIES

SHEET NO: 296

ROTATION:

Addendum No. 02
ID 3360-09-72
Revised Sheet 311
November 2, 2016

FINISHING ITEMS

Table with columns: STATION, LOCATION, SALVAGED TOPSOIL (SY), MULCHING (SY), FERTILIZER TYPE B (CWT), SEEDING MIXTURE NO. 30 (LB), SEEDING MIXTURE NO. 40 (LB), SOD WATER (MGAL), SOD LAWN (SY). Includes sub-sections for 648.0100 LOCATING NO-PASSING ZONES, 650.6000 CONSTRUCTION STAKING PIPE CULVERTS, and 650.0100 PREPARE FOUNDATION FOR ASPHALTIC SHOULDERS SPECIAL.

Summary table with columns: STATION, LOCATION, SALVAGED TOPSOIL (CY), FILL (CY), SEEDING, FERTILIZER TYPE B (CWT), EROSION MAT URBAN CLASS I TYPE B (SY), TOTALS.

650-4000 CONSTRUCTION STAKING STORM SEWER SYSTEM

Table with columns: STRUCTURE NO., LOCATION, (EACH), STRUCTURE NO., LOCATION, (EACH). Contains data for storm sewer structures.

650-0250 SAWING CONCRETE

Table with columns: STATION, LOCATION, (LF). Contains data for concrete sawing work.

Addendum No. 02 ID 3360-09-72 Revised Sheet 313 November 2, 2016

650-0150 SAWING ASPHALT

Table with columns: STATION, LOCATION, (LF). Contains data for asphalt sawing work.

650-0250 SAWING CONCRETE

Table with columns: STATION, LOCATION, (LF). Contains data for concrete sawing work.

650-0500 CONSTRUCTION STAKING STRUCTURE LAYOUT (structure)

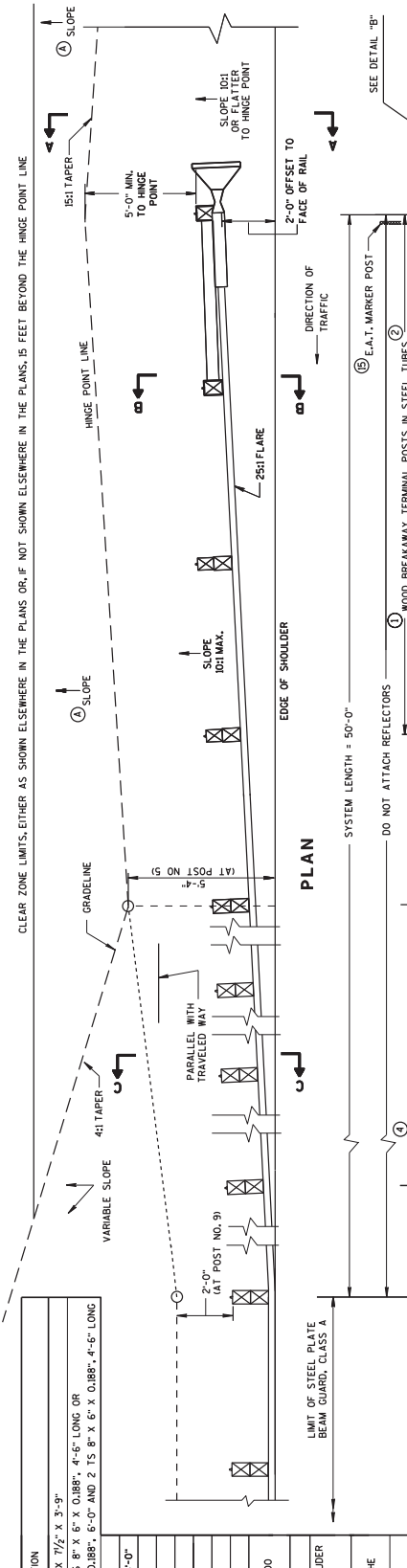
Table with columns: STATION, LOCATION, (LS), COMMENT. Contains data for structure layout staking.

NOTE: ALL ITEMS ARE CATEGORY 0010, UNLESS OTHERWISE NOTED.

MISCELLANEOUS QUANTITIES

BILL OF MATERIALS

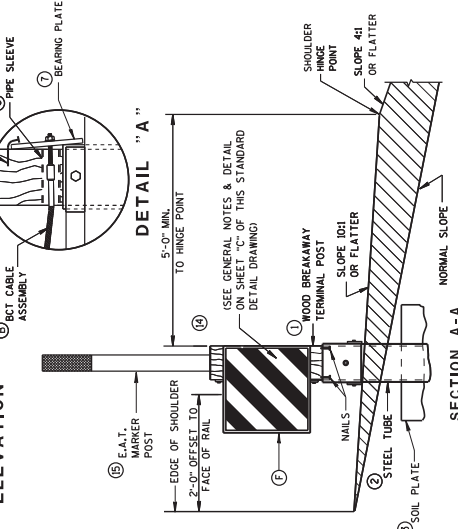
NOTE NO. / QTY.	DESCRIPTION
1	WOOD BREAKAWAY TERMINAL POST: 5/2" x 7/2" x 3'-9"
2	STEEL TUBE: OPTION 1 - QUANTITY OF 4 15 8" x 6" x 0.188", 4'-6" LONG OR OPTION 2 - QUANTITY OF 2 15 8" x 6" x 0.188", 6'-0" AND 2 15 8" x 6" x 0.188", 4'-6" LONG
3	SOIL PLATE: 2'-0" x 1'-6" x 1/2" **
4	WOOD BREAKAWAY CRT POST: 6" x 8" x 6'-0"
5	WOOD OFFSET BLOCKS: 6" x 8" x 1'-2"
6	PPE SLEEVE: 2" x 5 1/2" STANDARD PIPE
7	BEARING PLATE
8	1 BCT CABLE ASSEMBLY
9	1 CABLE ANCHOR BOX
10	1 STRUT & YOKE
11	STEEL PLATE BEAM END PANEL
12	1 ET-2000/ET-2000 PLUS GUARDRAIL EXTRUDER OR SKT-350 IMPACT HEAD: AS FURNISHED BY MANUFACTURER
13	1 6000' ALUMINUM SHEET WITH REFLECTIVE SURFACE: SECTION G37 OF THE STANDARD SPECIFICATIONS
14	1 E.A.T. MARKER POST



GENERAL NOTES

- FOLLOW MANUFACTURER'S BOLTING RECOMMENDATIONS, IF NONE ARE AVAILABLE, INSTALL 3/8" x 1'-6" BUTTON HEAD BOLTS AT ALL POSTS EXCEPT FOR POST 1.
- THE SLOPE IN THE AREA BOUNDED BY THE GRADELINE, THE HINGE POINT LINE (H.P.L.), AND THE CLEAR ZONE LIMITS (CZL) SHALL BE 4:1 OR FLATTER.
- AFTER FINAL ASSEMBLY, RECHECK CABLE TO BE SURE IT IS TAUT AND HAS NOT RELAXED.
- THE 13 SLOT FIRST RAIL PANEL MAY BE USED IN LIEU OF THE 3 SLOT RAIL PANEL ON SKT-350 ONLY.
- THE TOP OF THE STEEL TUBE ON POSTS 1 THROUGH 4 SHALL NOT BE MORE THAN 3" ABOVE THE FINISH GROUND ELEVATION.
- THE CENTER OF THE UPPER 3/2" DIAMETER HOLE ON POST 5 THROUGH 8 SHALL BE 7/2" ABOVE THE FINISH GROUND LINE.
- ATTACH ALUMINUM SHEET TO E.A.T. HEAD USING 4 STAINLESS STEEL SELF-TAPPING SCREWS, ONE SCREW PER CORNER.
- STEEL POSTS SHALL NOT BE ALLOWED FOR USE WITH ENERGY ABSORBING TERMINALS.
- INSTALL REFLECTORS ON THE FIRST 50 FEET OF THE APPROACH END OF THE ENERGY ABSORBING TERMINAL.
- DO NOT ATTACH BLOCKOUTS TO POSTS 1 AND 2.
- SDD SHOWS 4 - 54 INCH STEEL TUBES WITH SOIL PLATES INSTALLED ON POST 1 THROUGH 4. THE ALTERNATIVE INSTALLATION WOULD CONSIST OF 2 72 INCH STEEL TUBES ON POST 1 AND POST 2 AND 54 INCH SOIL TUBES ON POSTS 3 AND 4. THE ALTERNATIVE INSTALLATION DOES NOT REQUIRE SOIL PLATES.

ELEVATION



TYPICAL AT POST NO. 1

TYPICAL AT POST NO. 2

TYPICAL AT POST NOS. 6, 8

TYPICAL AT POST NO. 8

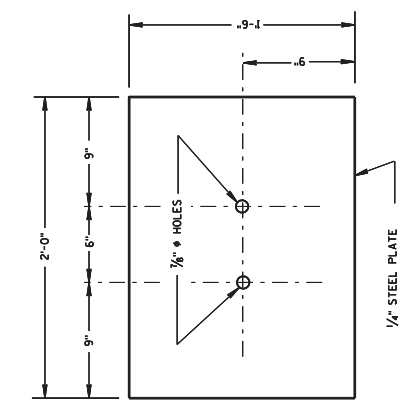
TYPICAL AT POST NO. 2

TYPICAL AT POST NO. 1

Addendum No. 02
 ID 3360-09-72
 Added Sheet 420A
 November 2, 2016

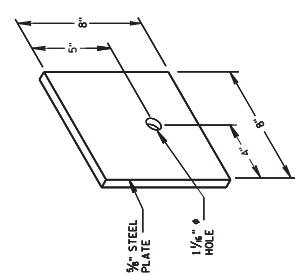
STEEL PLATE BEAM GUARD
 ENERGY ABSORBING TERMINAL

STATE OF WISCONSIN
 DEPARTMENT OF TRANSPORTATION

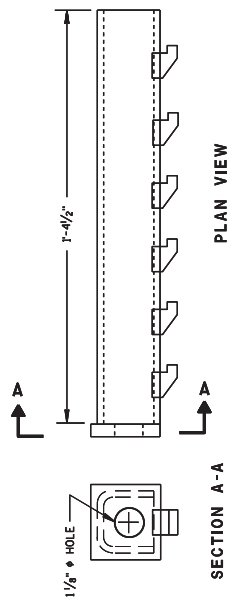


1/4" STEEL PLATE

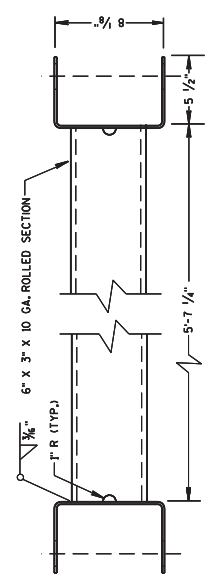
③ SOIL PLATE
(SKT-350, ET-2000/ET-2000 PLUS)



⑦ STEEL BEARING PLATE
(SKT-350, ET-2000/ET-2000 PLUS)



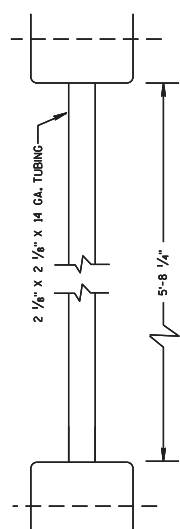
⑨ CABLE ANCHOR BOX (ET-2000/ET-2000 PLUS)



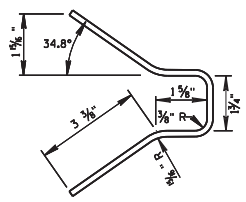
⑩ STRUT DETAIL (ET-2000/ET-2000 PLUS)

(ET-2000/ET-2000 PLUS)

Addendum No. 02
 ID 3360-09-72
 Added Sheet 420B
 November 2, 2016



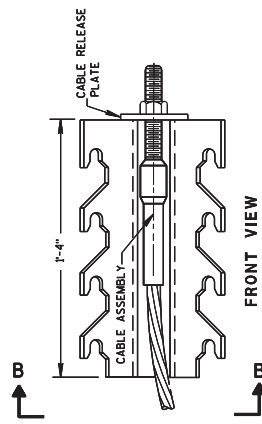
⑩ STRUT DETAIL (SKT-350)



SECTION B-B

⑨ CABLE ANCHOR BOX (SKT-350)

(SKT-350)



FRONT VIEW

STEEL PLATE BEAM GUARD
 ENERGY ABSORBING TERMINAL

STATE OF WISCONSIN
 DEPARTMENT OF TRANSPORTATION

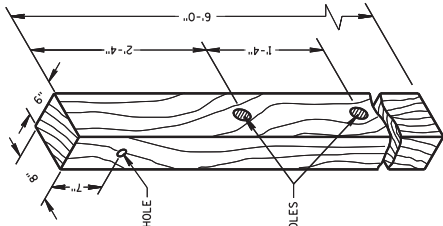
GENERAL NOTES

WHEN ROCK IS ENCOUNTERED DURING EXCAVATION A 12 INCH DIA. POST HOLE EXTENDING 20 INCHES DEEP INTO THE ROCK MAY BE USED IF APPROVED BY THE ENGINEER. GRANULAR MATERIAL SHALL BE PLACED IN THE BOTTOM OF THE HOLE APPROXIMATELY 2 1/2 INCHES DEEP TO PROVIDE DRAINAGE. THE SOIL TUBES SHALL BE FIELD CUT TO LENGTH, PLACED IN THE HOLE AND BACKFILLED WITH ADEQUATELY COMPACTED MATERIAL EXCAVATED FROM THE HOLE.

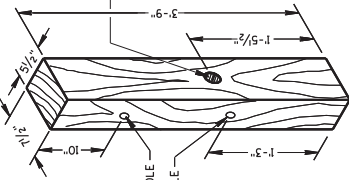
SEE APPROVED PRODUCTS LIST FOR ACCEPTABLE E. A. T. MARKER POST.

Ⓒ 1/2" DIA. X 3" LAG BOLT WITH WASHER.

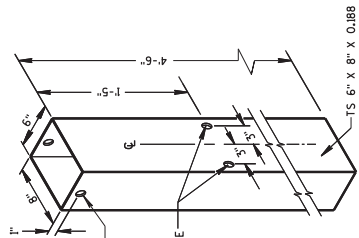
Addendum No. 02
ID 3360-09-72
Added Sheet 420C
November 2, 2016



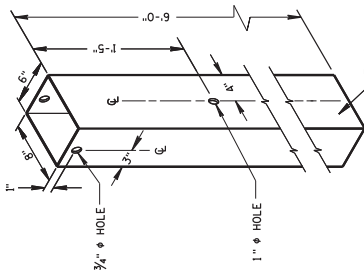
④ CRT POST
(POSTS NOS. 5-8)



① TERMINAL POST
(POSTS NO. 1-4)

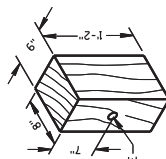


② 54" STEEL TUBE
(POSTS NO. 1-4)

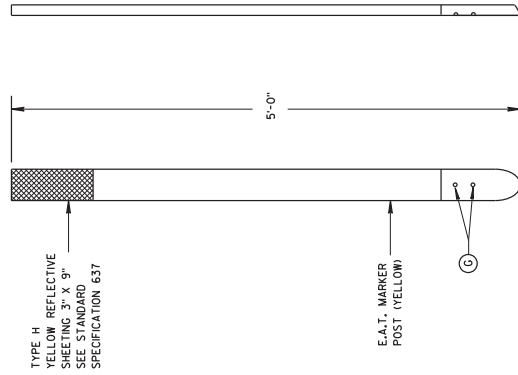


② 72" STEEL TUBE
(POSTS NO. 1-4)

WOOD BREAKAWAY POSTS

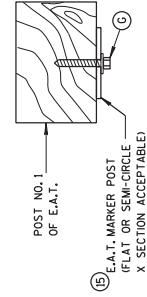
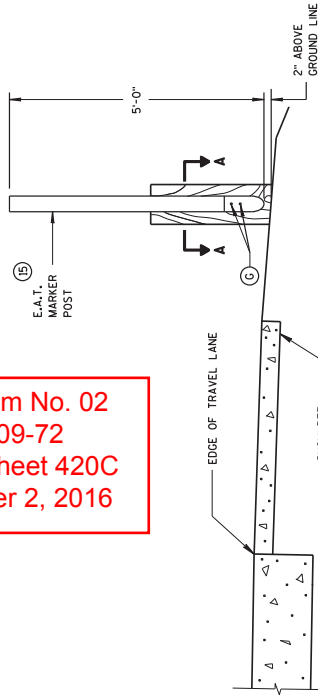


⑤ WOOD OFFSET BLOCK
REDD. AT ALL POSTS EXCEPT POST NOS 1 & 2

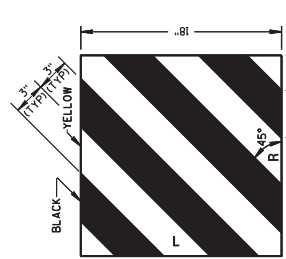


FRONT VIEW
SIDE VIEW
⑬ E. A. T. MARKER POST

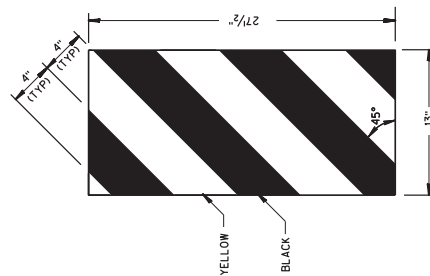
TYPICAL INSTALLATION OF E.A.T. MARKER POST BACKSIDE OF POST NO. 1
(E.A.T. AND RAIL REMOVED FOR CLARITY)



SECTION A-A



ET-2000 AND SKT-350
REFLECTIVE SHEETING DETAILS



ET-2000 PLUS ONLY
REFLECTIVE SHEETING DETAILS

STEEL PLATE BEAM GUARD ENERGY ABSORBING TERMINAL
STATE OF WISCONSIN DEPARTMENT OF TRANSPORTATION
APPROVED JUNE 2014 DATE
/S/ JERRY H. ZOGGB ROADWAY STANDARDS DEVELOPMENT ENGINEER

I.D. 3360-09-72
 STH 175
 WASHINGTON COUNTY
 STH 175

STAGE 1 CONSTRUCTION
 * EBS EXCAVATION INCLUDED IN END AREA

COMMON CUT

FILL FACTOR = 1.20

COMMON CUT

FILL FACTOR = 1.20

I.D. 3360-09-72
 STH 175
 WASHINGTON COUNTY
 STH 175

STAGE 1 CONSTRUCTION
 * EBS EXCAVATION INCLUDED IN END AREA

COMMON CUT

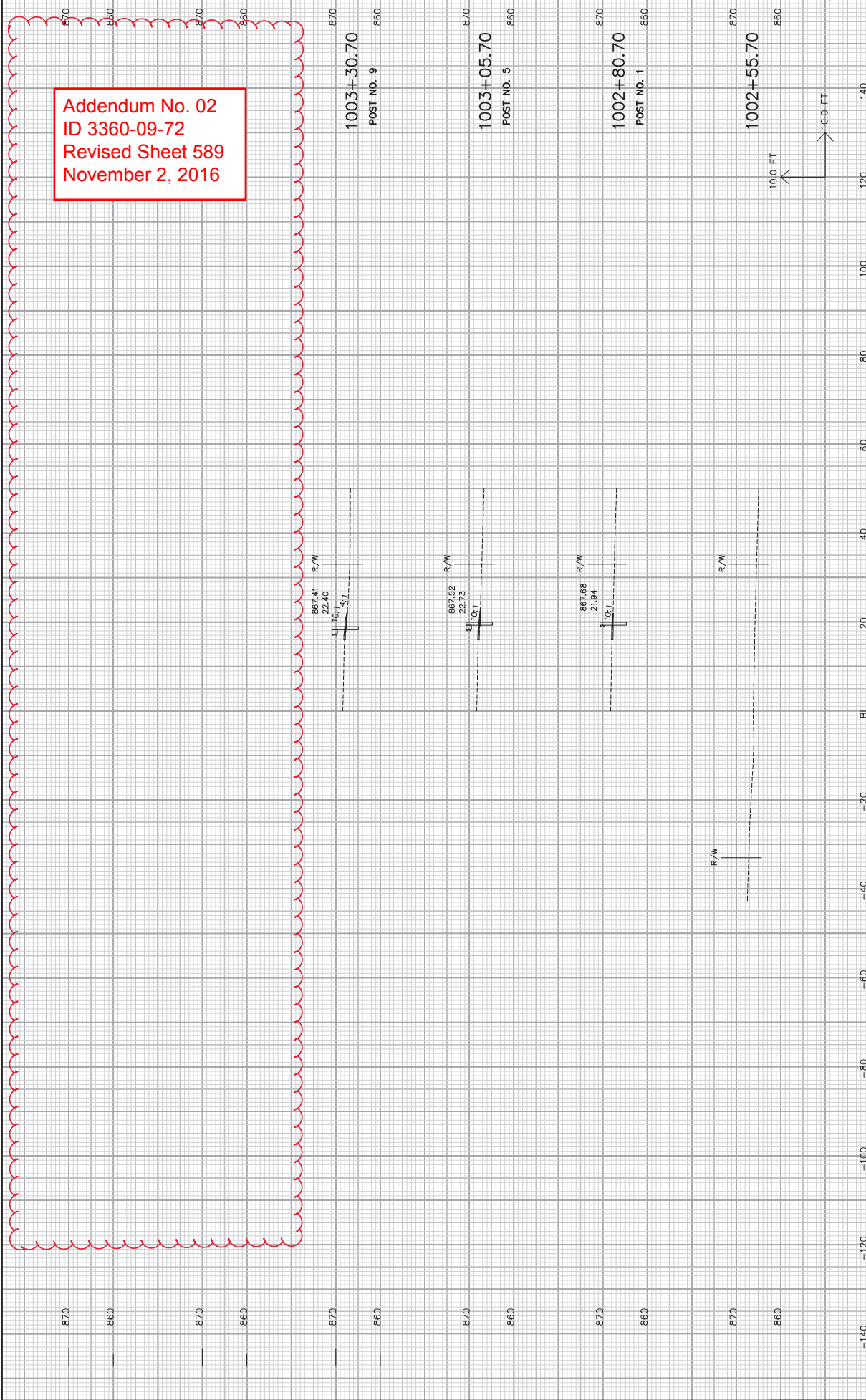
FILL FACTOR = 1.20

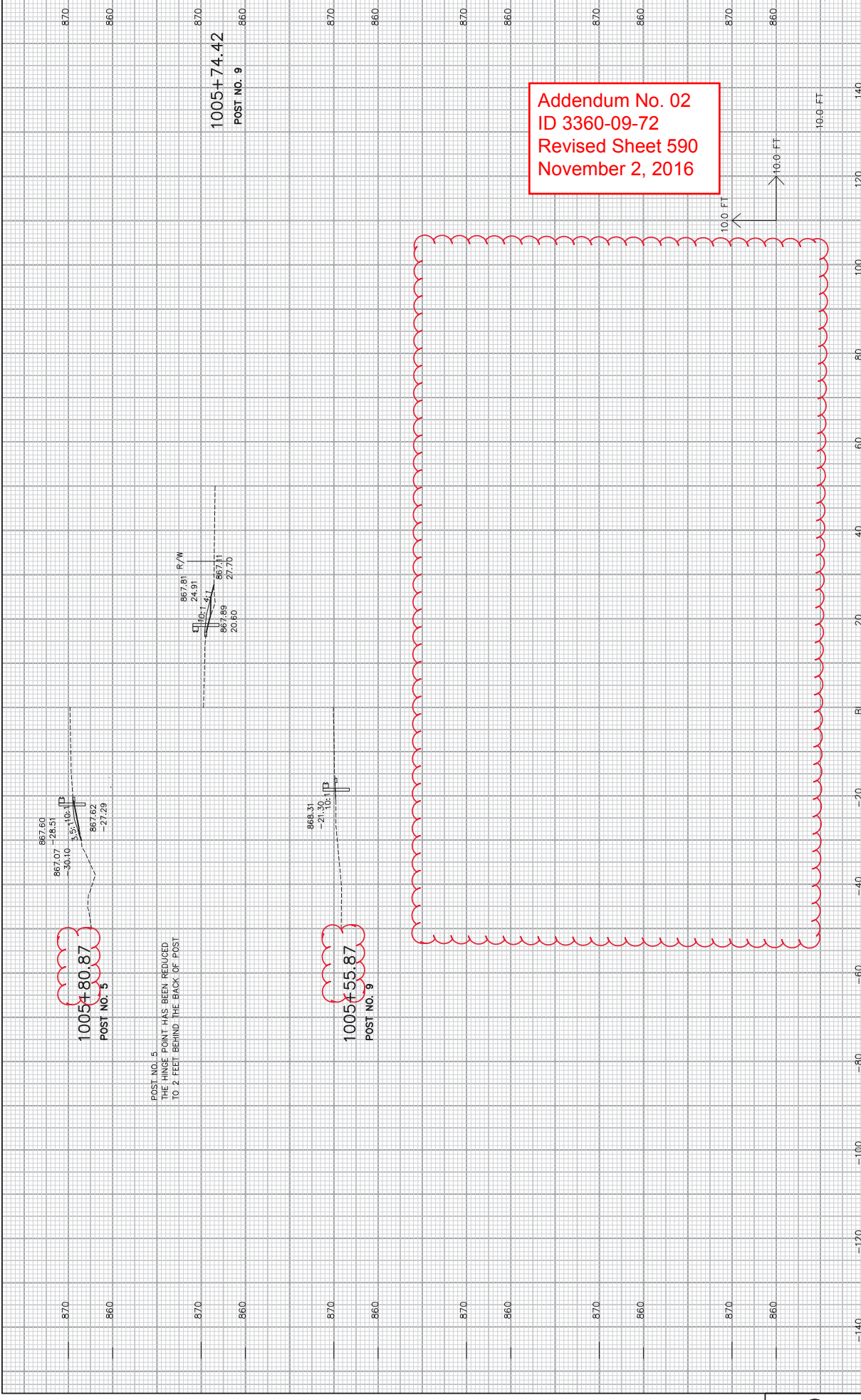
STATION	DISTANCE FEET	END AREA S.F.	VOL. C.Y.	FILL END AREA S.F.	FILL VOL. C.Y.	ADJ. FILL C.Y.	MASS BALANCE	STATION	DISTANCE FEET	END AREA S.F.	VOL. C.Y.	FILL END AREA S.F.	FILL VOL. C.Y.	ADJ. FILL C.Y.	MASS BALANCE
1018+00	50.00	36.8	83	0.0	1	1	82	1024+50	24.14	102.5	91	272.5	250	300	-742
1018+50	50.00	52.8	158	0.7	1	1	238	1024+74.14	25.86	101.5	95	287.2	306	397	-1015
1019+00	50.00	117.3	217	0.6	11	13	443	1025+00	50.00	96.7	181	382.8	701	841	-1674
1019+50	40.00	117.5	156	11.1	8	10	659	1025+50	50.00	94.1	177	473.8	765	918	-2415
1019+90	10.00	146.8	54	0.0	0	0	563	1026+00	25.00	94.6	87	469.7	437	524	-2852
1020+00	50.00	117.7	245	0.0	38	46	862	1026+25	25.00	97.6	89	412.6	408	490	-3253
1020+50	25.00	117.7	168	41.5	38	46	944	1026+50	50.00	91.6	175	293.5	654	785	-3863
1020+75	25.00	115.8	106	41.4	36	43	1006	1027+00	50.00	54.3	135	239.0	493	592	-4319
1021+00	50.00	112.3	206	36.0	115	138	1075	1027+50	50.00	57.3	103	131.2	343	411	-4627
1021+50	23.19	107.4	94	88.0	77	93	1076	1028+00	23.06	51.9	47	124.2	109	131	-4814
1021+73.19	26.81	109.1	167	92.3	88	106	1077	1028+23.06	26.94	43.5	48	126.2	125	150	-4814
1022+00	50.00	107.8	201	161.3	228	273	1005	1028+50	50.00	32.9	71	155.8	261	313	-5056
1022+50	50.00	102.2	164	240.3	372	446	793	1029+00	50.00	33.4	61	131.5	266	319	-5314
1023+00	50.00	104.5	181	288.1	471	565	380	1029+50	32.00	35.8	41	176.7	183	219	-5482
1023+50	50.00	102.9	162	312.4	537	645	-73	1029+82	18.00	37.2	24	216.5	131	157	-5625
1024+00	50.00	102.9	160		542	650	-533	1030+00	50.00	44.3	92	79.6	274	329	-5879
								1030+50	50.00	54.8	119	20.2	92	111	-5898
								1031+00	50.00	73.8	119	0.0	19	22	-5801
								1031+50	22.00	79.5	62	0.0	0	0	-5739
								1031+72	28.00	104.8	96	0.0	0	0	-5643
								1032+00	50.00	101.1	191	0.0	0	0	-5453
								1032+50	50.00	135.0	219	0.0	0	0	-5234
								1033+00	50.00	146.9	261	0.0	0	0	-4973
								1033+50	50.00	148.6	274	0.0	0	0	-4659
								1034+00	50.00	151.3	278	0.0	0	0	-4422
								1034+50	50.00	152.1	281	0.0	0	0	-4141
								1035+00	50.00	149.6	279	0.0	0	0	-3861
								1035+50	50.00		321	0.0	0	0	-3541

Addendum No. 02
ID 3360-09-72
Revised Sheet 563
November 2, 2016

NOTES:
 1) Common Cut volume includes EBS excavation.
 2) Salvaged/Unusable Pavement Material is included in Common Cut. This assumes the existing pavement is salvaged or wasted by the contractor. The existing pavement structure is not shown in the cross sections, but is included as a lump sum in the earthwork summary sheet.
 3) EBS excavation to be backfilled with Breaker Run and paid for as Item 311.0110 Breaker Run.
 4) Adjusted Fill = Fill * Fill Factor (1.20)
 5) Mass Balance = Cut Volume - Adjusted Fill. A plus Mass Balance quantity indicates a waste volume of material. A minus quantity indicates a shortage of material.

Addendum No. 02
ID 3360-09-72
Revised Sheet 589
November 2, 2016

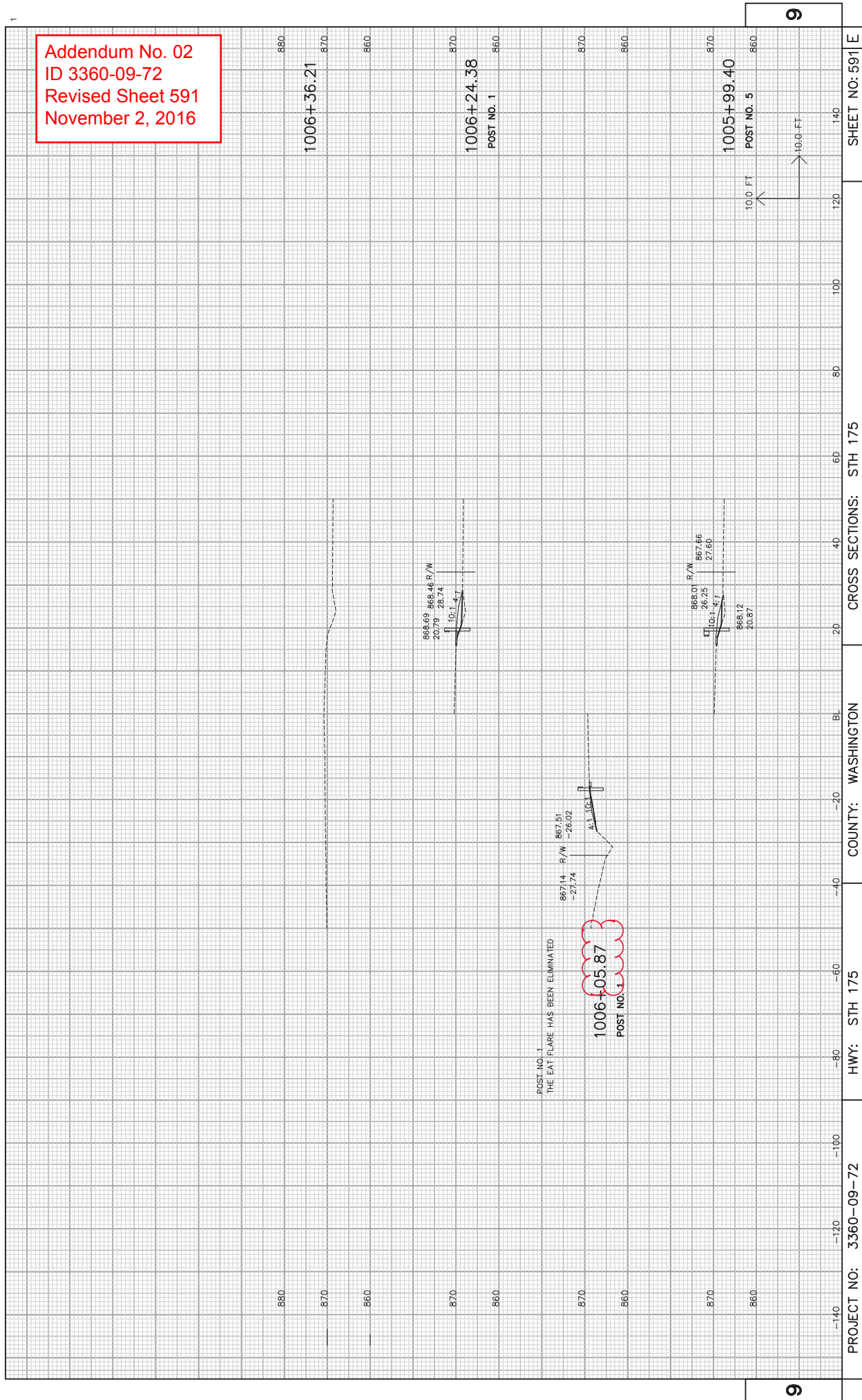




PROJECT NO: 3360-09-72 COUNTY: WASHINGTON CROSS SECTIONS: STH 175 SHEET NO: 590 E

FILE NAME: W:\Projects\RD\740\Project 2 dgn\090204g_xsm\1002_1005.dwg PLOT DATE: Oct 31, 2016 PLOT BY: kapeeth PLOT SCALE: ROTATION:

Addendum No. 02
ID 3360-09-72
Revised Sheet 591
November 2, 2016



9

9



Proposal Schedule of Items

Proposal ID: 20161108030

Project(s): 3360-09-72

SECTION: 0001 Roadway Items

Alt Set ID: Alt Mbr ID:

Proposal Line Number	Item ID Description	Approximate Quantity and Units	Unit Price	Bid Amount
0010	201.0105 Clearing	87.000 STA	_____.	_____.
0020	201.0120 Clearing	81.000 ID	_____.	_____.
0030	201.0205 Grubbing	87.000 STA	_____.	_____.
0040	201.0220 Grubbing	81.000 ID	_____.	_____.
0050	203.0100 Removing Small Pipe Culverts	30.000 EACH	_____.	_____.
0060	203.0200 Removing Old Structure (station) 01. 994+25	LS	LUMP SUM	_____.
0080	203.0200 Removing Old Structure (station) 03. 1279+85	LS	LUMP SUM	_____.
0090	203.0200 Removing Old Structure (station) 04. 1337+68	LS	LUMP SUM	_____.
0100	203.0200 Removing Old Structure (station) 05. 1396+48	LS	LUMP SUM	_____.
0110	203.0500.S Removing Old Structure Over Waterway (station) 01. 961+02	LS	LUMP SUM	_____.
0120	204.0100 Removing Pavement	20,967.000 SY	_____.	_____.
0130	204.0115 Removing Asphaltic Surface Butt Joints	2,560.000 SY	_____.	_____.
0140	204.0125 Removing Asphaltic Surface Milling	15,484.000 TON	_____.	_____.
0150	204.0150 Removing Curb & Gutter	2,505.000 LF	_____.	_____.
0160	204.0155 Removing Concrete Sidewalk	32.000 SY	_____.	_____.
0170	204.0165 Removing Guardrail	6,913.000 LF	_____.	_____.



Proposal Schedule of Items

Proposal ID: 20161108030

Project(s): 3360-09-72

SECTION: 0001 Roadway Items

Alt Set ID: Alt Mbr ID:

Proposal Line Number	Item ID Description	Approximate Quantity and Units	Unit Price	Bid Amount
0180	204.0180 Removing Delineators and Markers	97.000 EACH	_____.	_____.
0190	204.0195 Removing Concrete Bases	7.000 EACH	_____.	_____.
0200	204.0220 Removing Inlets	7.000 EACH	_____.	_____.
0210	204.0245 Removing Storm Sewer (size) 01. 10-inch	8.000 LF	_____.	_____.
0220	204.0245 Removing Storm Sewer (size) 02. 15-inch	104.000 LF	_____.	_____.
0230	204.0245 Removing Storm Sewer (size) 03. 18-inch	73.000 LF	_____.	_____.
0240	204.0280 Sealing Pipes	2.000 EACH	_____.	_____.
0250	205.0100 Excavation Common	63,707.000 CY	_____.	_____.
0260	205.0200 Excavation Rock	866.000 CY	_____.	_____.
0270	205.0501.S Excavation, Hauling, and Disposal of Petroleum Contaminated Soil	1,470.000 TON	_____.	_____.
0280	206.2000 Excavation for Structures Culverts (structure) 01.C-66-106	LS	LUMP SUM	_____.
0290	206.3000 Excavation for Structures Retaining Walls (structure) 01. R-66-37	LS	LUMP SUM	_____.
0300	206.3000 Excavation for Structures Retaining Walls (structure) 02. R-66-38	LS	LUMP SUM	_____.
0310	210.0100 Backfill Structure	1,225.000 CY	_____.	_____.
0320	211.0100 Prepare Foundation for Asphaltic Paving (project) 01.3360-09-72	LS	LUMP SUM	_____.



Proposal Schedule of Items

Proposal ID: 20161108030

Project(s): 3360-09-72

SECTION: 0001 Roadway Items

Alt Set ID:

Alt Mbr ID:

Proposal Line Number	Item ID Description	Approximate Quantity and Units	Unit Price	Bid Amount
0330	211.0400 Prepare Foundation for Asphaltic Shoulders	622.000 STA	_____.	_____.
0340	213.0100 Finishing Roadway (project) 01. 3360-09-72	1.000 EACH	_____.	_____.
0350	214.0100 Obliterating Old Road	1.000 STA	_____.	_____.
0360	305.0110 Base Aggregate Dense 3/4-Inch	4,568.000 TON	_____.	_____.
0370	305.0120 Base Aggregate Dense 1 1/4-Inch	69,373.000 TON	_____.	_____.
0380	311.0110 Breaker Run	14,000.000 TON	_____.	_____.
0390	311.0115 Breaker Run	150.000 CY	_____.	_____.
0400	390.0201 Base Patching Asphaltic	470.000 TON	_____.	_____.
0410	405.0100 Coloring Concrete WisDOT Red	86.000 CY	_____.	_____.
0420	416.0170 Concrete Driveway 7-Inch	723.000 SY	_____.	_____.
0430	416.0508 Concrete Roundabout Truck Apron 8-Inch	387.000 SY	_____.	_____.
0440	416.1010 Concrete Surface Drains	4.000 CY	_____.	_____.
0450	440.4410 Incentive IRI Ride	18,000.000 DOL	1.00000	18,000.00
0460	455.0605 Tack Coat	17,287.000 GAL	_____.	_____.
0470	460.2000 Incentive Density HMA Pavement	34,620.000 DOL	1.00000	34,620.00
0480	465.0105 Asphaltic Surface	127.000 TON	_____.	_____.



Proposal Schedule of Items

Page 4 of 21

Proposal ID: 20161108030

Project(s): 3360-09-72

SECTION: 0001 Roadway Items

Alt Set ID:

Alt Mbr ID:

Proposal Line Number	Item ID Description	Approximate Quantity and Units	Unit Price	Bid Amount
0490	465.0110 Asphaltic Surface Patching	50.000 TON	_____.	_____.
0500	465.0120 Asphaltic Surface Driveways and Field Entrances	448.000 TON	_____.	_____.
0510	465.0125 Asphaltic Surface Temporary	189.000 TON	_____.	_____.
0520	465.0315 Asphaltic Flumes	260.000 SY	_____.	_____.
0530	465.0475 Asphalt Center Line Rumble Strips 2-Lane Rural	15,940.000 LF	_____.	_____.
0540	504.0100 Concrete Masonry Culverts	210.000 CY	_____.	_____.
0550	504.0500 Concrete Masonry Retaining Walls	519.000 CY	_____.	_____.
0560	505.0400 Bar Steel Reinforcement HS Structures	33,290.000 LB	_____.	_____.
0570	506.0605 Structural Steel HS	201,640.000 LB	_____.	_____.
0580	507.0200 Treated Lumber and Timber	59.700 MBM	_____.	_____.
0590	516.0500 Rubberized Membrane Waterproofing	26.000 SY	_____.	_____.
0600	517.0600 Painting Epoxy System (structure) 01. R-66-37	LS	LUMP SUM	_____.
0610	517.0600 Painting Epoxy System (structure) 02. R-66-38	LS	LUMP SUM	_____.
0620	520.8000 Concrete Collars for Pipe	4.000 EACH	_____.	_____.
0630	521.0115 Culvert Pipe Corrugated Steel 15-Inch	152.000 LF	_____.	_____.
0640	521.0118 Culvert Pipe Corrugated Steel 18-Inch	277.000 LF	_____.	_____.



Proposal Schedule of Items

Proposal ID: 20161108030

Project(s): 3360-09-72

SECTION: 0001 Roadway Items

Alt Set ID:

Alt Mbr ID:

Proposal Line Number	Item ID Description	Approximate Quantity and Units	Unit Price	Bid Amount
0650	521.0124 Culvert Pipe Corrugated Steel 24-Inch	72.000 LF	_____.	_____.
0660	521.1015 Apron Endwalls for Culvert Pipe Steel 15-Inch	10.000 EACH	_____.	_____.
0670	521.1018 Apron Endwalls for Culvert Pipe Steel 18-Inch	12.000 EACH	_____.	_____.
0680	521.1024 Apron Endwalls for Culvert Pipe Steel 24-Inch	3.000 EACH	_____.	_____.
0690	522.0136 Culvert Pipe Reinforced Concrete Class III 36-Inch	74.000 LF	_____.	_____.
0700	522.0315 Culvert Pipe Reinforced Concrete Class IV 15-Inch	44.000 LF	_____.	_____.
0710	522.0324 Culvert Pipe Reinforced Concrete Class IV 24-Inch	114.000 LF	_____.	_____.
0720	522.0342 Culvert Pipe Reinforced Concrete Class IV 42-Inch	144.000 LF	_____.	_____.
0730	522.1012 Apron Endwalls for Culvert Pipe Reinforced Concrete 12-Inch	1.000 EACH	_____.	_____.
0740	522.1015 Apron Endwalls for Culvert Pipe Reinforced Concrete 15-Inch	5.000 EACH	_____.	_____.
0750	522.1018 Apron Endwalls for Culvert Pipe Reinforced Concrete 18-Inch	5.000 EACH	_____.	_____.
0760	522.1024 Apron Endwalls for Culvert Pipe Reinforced Concrete 24-Inch	7.000 EACH	_____.	_____.
0770	522.1027 Apron Endwalls for Culvert Pipe Reinforced Concrete 27-Inch	1.000 EACH	_____.	_____.
0780	522.1030 Apron Endwalls for Culvert Pipe Reinforced Concrete 30-Inch	1.000 EACH	_____.	_____.



Proposal Schedule of Items

Proposal ID: 20161108030

Project(s): 3360-09-72

SECTION: 0001 Roadway Items

Alt Set ID: Alt Mbr ID:

Proposal Line Number	Item ID Description	Approximate Quantity and Units	Unit Price	Bid Amount
0790	522.1036 Apron Endwalls for Culvert Pipe Reinforced Concrete 36-Inch	2.000 EACH	_____.	_____.
0800	522.1042 Apron Endwalls for Culvert Pipe Reinforced Concrete 42-Inch	5.000 EACH	_____.	_____.
0810	523.0158 Culvert Pipe Reinforced Concrete Horizontal Elliptical Class HE-III 58x91-Inch	126.000 LF	_____.	_____.
0820	523.0414 Culvert Pipe Reinforced Concrete Horizontal Elliptical Class HE-IV 14x23-Inch	35.000 LF	_____.	_____.
0830	523.0419 Culvert Pipe Reinforced Concrete Horizontal Elliptical Class HE-IV 19x30-Inch	170.000 LF	_____.	_____.
0840	523.0424 Culvert Pipe Reinforced Concrete Horizontal Elliptical Class HE-IV 24x38-Inch	54.000 LF	_____.	_____.
0850	523.0514 Apron Endwalls for Culvert Pipe Reinforced Concrete Horizontal Elliptical 14x23-Inch	6.000 EACH	_____.	_____.
0860	523.0519 Apron Endwalls for Culvert Pipe Reinforced Concrete Horizontal Elliptical 19x30-Inch	5.000 EACH	_____.	_____.
0870	523.0524 Apron Endwalls for Culvert Pipe Reinforced Concrete Horizontal Elliptical 24x38-Inch	2.000 EACH	_____.	_____.
0880	523.0558 Apron Endwalls for Culvert Pipe Reinforced Concrete Horizontal Elliptical 58x91-Inch	2.000 EACH	_____.	_____.
0900	601.0405 Concrete Curb & Gutter 18-Inch Type A	175.000 LF	_____.	_____.
0910	601.0411 Concrete Curb & Gutter 30-Inch Type D	5,175.000 LF	_____.	_____.



Proposal Schedule of Items

Proposal ID: 20161108030

Project(s): 3360-09-72

SECTION: 0001 Roadway Items

Alt Set ID: Alt Mbr ID:

Proposal Line Number	Item ID Description	Approximate Quantity and Units	Unit Price	Bid Amount
0920	601.0557 Concrete Curb & Gutter 6-Inch Sloped 36-Inch Type D	15,925.000 LF	_____.	_____.
0930	601.0582 Concrete Curb & Gutter 4-Inch Sloped 36-Inch Type T	190.000 LF	_____.	_____.
0940	602.0410 Concrete Sidewalk 5-Inch	22,825.000 SF	_____.	_____.
0950	602.0420 Concrete Sidewalk 7-Inch	530.000 SF	_____.	_____.
0960	602.0505 Curb Ramp Detectable Warning Field Yellow	224.000 SF	_____.	_____.
0970	602.1500 Concrete Steps	24.000 SF	_____.	_____.
0980	606.0100 Riprap Light	80.000 CY	_____.	_____.
0990	606.0200 Riprap Medium	316.000 CY	_____.	_____.
1000	606.0300 Riprap Heavy	45.000 CY	_____.	_____.
1020	607.5000 Storm Sewer Rock Excavation	400.000 CY	_____.	_____.
1030	608.0315 Storm Sewer Pipe Reinforced Concrete Class III 15-Inch	1,032.000 LF	_____.	_____.
1040	608.0318 Storm Sewer Pipe Reinforced Concrete Class III 18-Inch	209.000 LF	_____.	_____.
1050	608.0324 Storm Sewer Pipe Reinforced Concrete Class III 24-Inch	2,187.000 LF	_____.	_____.
1060	608.0330 Storm Sewer Pipe Reinforced Concrete Class III 30-Inch	26.000 LF	_____.	_____.
1070	608.0412 Storm Sewer Pipe Reinforced Concrete Class IV 12-Inch	77.000 LF	_____.	_____.



Proposal Schedule of Items

Page 8 of 21

Proposal ID: 20161108030

Project(s): 3360-09-72

SECTION: 0001 Roadway Items

Alt Set ID:

Alt Mbr ID:

Proposal Line Number	Item ID Description	Approximate Quantity and Units	Unit Price	Bid Amount
1080	608.0415 Storm Sewer Pipe Reinforced Concrete Class IV 15-Inch	710.000 LF	_____.	_____.
1090	608.0418 Storm Sewer Pipe Reinforced Concrete Class IV 18-Inch	580.000 LF	_____.	_____.
1100	608.0424 Storm Sewer Pipe Reinforced Concrete Class IV 24-Inch	765.000 LF	_____.	_____.
1110	608.0427 Storm Sewer Pipe Reinforced Concrete Class IV 27-Inch	300.000 LF	_____.	_____.
1120	608.0430 Storm Sewer Pipe Reinforced Concrete Class IV 30-Inch	120.000 LF	_____.	_____.
1130	608.0436 Storm Sewer Pipe Reinforced Concrete Class IV 36-Inch	75.000 LF	_____.	_____.
1140	608.0442 Storm Sewer Pipe Reinforced Concrete Class IV 42-Inch	53.000 LF	_____.	_____.
1150	610.0414 Storm Sewer Pipe Reinforced Concrete Horizontal Elliptical Class HE-IV 14x23-Inch	258.000 LF	_____.	_____.
1160	611.0420 Reconstructing Manholes	1.000 EACH	_____.	_____.
1170	611.0430 Reconstructing Inlets	1.000 EACH	_____.	_____.
1180	611.0530 Manhole Covers Type J	21.000 EACH	_____.	_____.
1190	611.0624 Inlet Covers Type H	6.000 EACH	_____.	_____.
1200	611.0627 Inlet Covers Type HM	41.000 EACH	_____.	_____.
1210	611.0642 Inlet Covers Type MS	18.000 EACH	_____.	_____.
1220	611.0652 Inlet Covers Type T	2.000 EACH	_____.	_____.



Proposal Schedule of Items

Proposal ID: 20161108030

Project(s): 3360-09-72

SECTION: 0001 Roadway Items

Alt Set ID:

Alt Mbr ID:

Proposal Line Number	Item ID Description	Approximate Quantity and Units	Unit Price	Bid Amount
1230	611.2004 Manholes 4-FT Diameter	2.000 EACH	_____.	_____.
1240	611.2005 Manholes 5-FT Diameter	1.000 EACH	_____.	_____.
1250	611.2006 Manholes 6-FT Diameter	19.000 EACH	_____.	_____.
1260	611.2008 Manholes 8-FT Diameter	1.000 EACH	_____.	_____.
1270	611.3004 Inlets 4-FT Diameter	22.000 EACH	_____.	_____.
1280	611.3230 Inlets 2x3-FT	25.000 EACH	_____.	_____.
1290	611.3901 Inlets Median 1 Grate	2.000 EACH	_____.	_____.
1300	611.3902 Inlets Median 2 Grate	8.000 EACH	_____.	_____.
1310	611.8110 Adjusting Manhole Covers	2.000 EACH	_____.	_____.
1320	611.8120.S Cover Plates Temporary	25.000 EACH	_____.	_____.
1330	611.9800.S Pipe Grates	2.000 EACH	_____.	_____.
1340	612.0104 Pipe Underdrain 4-Inch	45.000 LF	_____.	_____.
1350	612.0106 Pipe Underdrain 6-Inch	1,410.000 LF	_____.	_____.
1360	612.0206 Pipe Underdrain Unperforated 6-Inch	100.000 LF	_____.	_____.
1370	612.0406 Pipe Underdrain Wrapped 6-Inch	305.000 LF	_____.	_____.
1380	612.0700 Drain Tile Exploration	50.500 LF	_____.	_____.
1390	612.0804 Apron Endwalls for Underdrain Reinforced Concrete 4-Inch	3.000 EACH	_____.	_____.



Proposal Schedule of Items

Proposal ID: 20161108030

Project(s): 3360-09-72

SECTION: 0001 Roadway Items

Alt Set ID:

Alt Mbr ID:

Proposal Line Number	Item ID Description	Approximate Quantity and Units	Unit Price	Bid Amount
1400	614.0010 Barrier System Grading Shaping Finishing	18.000 EACH	_____	_____
1410	614.0396 Guardrail Mow Strip Asphalt	931.000 SY	_____	_____
1420	614.0700 Sand Barrels Arrays	4.000 EACH	_____	_____
1430	614.2300 MGS Guardrail 3	4,925.000 LF	_____	_____
1440	614.2340 MGS Guardrail 3 L	425.000 LF	_____	_____
1450	614.2610 MGS Guardrail Terminal EAT	33.000 EACH	_____	_____
1460	616.0700.S Fence Safety	100.000 LF	_____	_____
1470	618.0100 Maintenance And Repair of Haul Roads (project) 01. 3360-09-72	1.000 EACH	_____	_____
1480	619.1000 Mobilization	1.000 EACH	_____	_____
1490	620.0300 Concrete Median Sloped Nose	542.000 SF	_____	_____
1500	623.0200 Dust Control Surface Treatment	215,600.000 SY	_____	_____
1510	624.0100 Water	248.000 MGAL	_____	_____
1520	625.0500 Salvaged Topsoil	60,035.000 SY	_____	_____
1530	627.0200 Mulching	93,800.000 SY	_____	_____
1540	628.1104 Erosion Bales	1,900.000 EACH	_____	_____
1550	628.1504 Silt Fence	21,960.000 LF	_____	_____
1560	628.1520 Silt Fence Maintenance	43,920.000 LF	_____	_____



Proposal Schedule of Items

Proposal ID: 20161108030

Project(s): 3360-09-72

SECTION: 0001 Roadway Items

Alt Set ID: Alt Mbr ID:

Proposal Line Number	Item ID Description	Approximate Quantity and Units	Unit Price	Bid Amount
1570	628.1905 Mobilizations Erosion Control	10.000 EACH	_____.	_____.
1580	628.1910 Mobilizations Emergency Erosion Control	6.000 EACH	_____.	_____.
1590	628.2004 Erosion Mat Class I Type B	21,800.000 SY	_____.	_____.
1600	628.2008 Erosion Mat Urban Class I Type B	5,000.000 SY	_____.	_____.
1610	628.7005 Inlet Protection Type A	61.000 EACH	_____.	_____.
1620	628.7010 Inlet Protection Type B	10.000 EACH	_____.	_____.
1630	628.7015 Inlet Protection Type C	50.000 EACH	_____.	_____.
1640	628.7504 Temporary Ditch Checks	610.000 LF	_____.	_____.
1650	628.7555 Culvert Pipe Checks	72.000 EACH	_____.	_____.
1660	628.7570 Rock Bags	300.000 EACH	_____.	_____.
1670	629.0210 Fertilizer Type B	77.000 CWT	_____.	_____.
1680	630.0130 Seeding Mixture No. 30	1,350.000 LB	_____.	_____.
1690	630.0140 Seeding Mixture No. 40	430.000 LB	_____.	_____.
1700	631.0300 Sod Water	450.000 MGAL	_____.	_____.
1710	631.1000 Sod Lawn	20,000.000 SY	_____.	_____.
1720	633.5200 Markers Culvert End	63.000 EACH	_____.	_____.
1730	634.0614 Posts Wood 4x6-Inch X 14-FT	101.000 EACH	_____.	_____.



Proposal Schedule of Items

Proposal ID: 20161108030

Project(s): 3360-09-72

SECTION: 0001 Roadway Items

Alt Set ID: Alt Mbr ID:

Proposal Line Number	Item ID Description	Approximate Quantity and Units	Unit Price	Bid Amount
1740	634.0616 Posts Wood 4x6-Inch X 16-FT	160.000 EACH	_____	_____
1750	634.0618 Posts Wood 4x6-Inch X 18-FT	18.000 EACH	_____	_____
1760	634.0622 Posts Wood 4x6-Inch X 22-FT	3.000 EACH	_____	_____
1770	634.0812 Posts Tubular Steel 2x2-Inch X 12-FT	10.000 EACH	_____	_____
1780	634.0814 Posts Tubular Steel 2x2-Inch X 14-FT	11.000 EACH	_____	_____
1790	634.0816 Posts Tubular Steel 2x2-Inch X 16-FT	3.000 EACH	_____	_____
1800	636.0050.S Foundation Drilling (diameter) 01. 30-Inch	715.000 LF	_____	_____
1810	636.0050.S Foundation Drilling (diameter) 02. 36-Inch	1,480.000 LF	_____	_____
1820	637.1220 Signs Type I Reflective SH	172.000 SF	_____	_____
1830	637.2210 Signs Type II Reflective H	1,644.490 SF	_____	_____
1840	637.2230 Signs Type II Reflective F	640.250 SF	_____	_____
1850	638.2102 Moving Signs Type II	25.000 EACH	_____	_____
1860	638.2602 Removing Signs Type II	222.000 EACH	_____	_____
1870	638.3000 Removing Small Sign Supports	236.000 EACH	_____	_____
1880	641.8100 Overhead Sign Support (structure) 01. S-66-609	LS	LUMP SUM	_____
1890	641.8100 Overhead Sign Support (structure) 02. S-66-610	LS	LUMP SUM	_____



Proposal Schedule of Items

Proposal ID: 20161108030

Project(s): 3360-09-72

SECTION: 0001 Roadway Items

Alt Set ID: Alt Mbr ID:

Proposal Line Number	Item ID Description	Approximate Quantity and Units	Unit Price	Bid Amount
1900	641.8100 Overhead Sign Support (structure) 03. S-66-242	LS	LUMP SUM	_____.
1910	642.5401 Field Office Type D	1.000 EACH	_____.	_____.
1920	643.0100 Traffic Control (project) 01. 3360-09-72	1.000 EACH	_____.	_____.
1930	643.0300 Traffic Control Drums	6,723.000 DAY	_____.	_____.
1940	643.0410 Traffic Control Barricades Type II	73.000 DAY	_____.	_____.
1950	643.0420 Traffic Control Barricades Type III	13,165.000 DAY	_____.	_____.
1960	643.0500 Traffic Control Flexible Tubular Marker Posts	143.000 EACH	_____.	_____.
1970	643.0600 Traffic Control Flexible Tubular Marker Bases	143.000 EACH	_____.	_____.
1980	643.0705 Traffic Control Warning Lights Type A	19,624.000 DAY	_____.	_____.
1990	643.0715 Traffic Control Warning Lights Type C	1,428.000 DAY	_____.	_____.
2000	643.0800 Traffic Control Arrow Boards	58.000 DAY	_____.	_____.
2010	643.0900 Traffic Control Signs	23,918.000 DAY	_____.	_____.
2020	643.0910 Traffic Control Covering Signs Type I	8.000 EACH	_____.	_____.
2030	643.0920 Traffic Control Covering Signs Type II	36.000 EACH	_____.	_____.
2040	643.1050 Traffic Control Signs PCMS	98.000 DAY	_____.	_____.
2050	643.2000 Traffic Control Detour (project) 01.3360-09-72	1.000 EACH	_____.	_____.



Proposal Schedule of Items

Proposal ID: 20161108030

Project(s): 3360-09-72

SECTION: 0001 Roadway Items

Alt Set ID: Alt Mbr ID:

Proposal Line Number	Item ID Description	Approximate Quantity and Units	Unit Price	Bid Amount
2060	643.3000 Traffic Control Detour Signs	76,155.000 DAY	_____.	_____.
2070	645.0105 Geotextile Type C	410.000 SY	_____.	_____.
2080	645.0111 Geotextile Type DF Schedule A	785.000 SY	_____.	_____.
2090	645.0120 Geotextile Type HR	1,125.000 SY	_____.	_____.
2100	645.0130 Geotextile Type R	342.000 SY	_____.	_____.
2110	646.0106 Pavement Marking Epoxy 4-Inch	36,995.000 LF	_____.	_____.
2120	646.0600 Removing Pavement Markings	4,250.000 LF	_____.	_____.
2130	646.0881.S Pavement Marking Grooved Wet Reflective Tape 4-Inch	170.000 LF	_____.	_____.
2140	646.2304.S Pavement Marking Grooved Wet Reflective Epoxy 4-Inch	138,796.000 LF	_____.	_____.
2150	647.0456 Pavement Marking Curb Epoxy	138.000 LF	_____.	_____.
2160	647.0606 Pavement Marking Island Nose Epoxy	6.000 EACH	_____.	_____.
2170	647.0726 Pavement Marking Diagonal Epoxy 12-Inch	377.000 LF	_____.	_____.
2180	647.0955 Removing Pavement Markings Arrows	5.000 EACH	_____.	_____.
2190	647.0965 Removing Pavement Markings Words	3.000 EACH	_____.	_____.
2200	648.0100 Locating No-Passing Zones	9.000 MI	_____.	_____.
2210	649.0400 Temporary Pavement Marking Removable Tape 4-Inch	4,802.000 LF	_____.	_____.



Proposal Schedule of Items

Proposal ID: 20161108030

Project(s): 3360-09-72

SECTION: 0001 Roadway Items

Alt Set ID: Alt Mbr ID:

Proposal Line Number	Item ID Description	Approximate Quantity and Units	Unit Price	Bid Amount
2220	649.0402 Temporary Pavement Marking Paint 4-Inch	47,140.000 LF	_____.	_____.
2230	649.0900 Temporary Pavement Marking Stop Line 12-Inch	96.000 LF	_____.	_____.
2240	650.4000 Construction Staking Storm Sewer	81.000 EACH	_____.	_____.
2250	650.4500 Construction Staking Subgrade	23,090.000 LF	_____.	_____.
2260	650.5000 Construction Staking Base	23,090.000 LF	_____.	_____.
2270	650.5500 Construction Staking Curb Gutter and Curb & Gutter	22,748.000 LF	_____.	_____.
2280	650.6000 Construction Staking Pipe Culverts	23.000 EACH	_____.	_____.
2290	650.6500 Construction Staking Structure Layout (structure) 01. C-66-106	LS	LUMP SUM	_____.
2300	650.6500 Construction Staking Structure Layout (structure) 02. R-66-36	LS	LUMP SUM	_____.
2310	650.6500 Construction Staking Structure Layout (structure) 03. R-66-37	LS	LUMP SUM	_____.
2320	650.6500 Construction Staking Structure Layout (structure) 04. R-66-38	LS	LUMP SUM	_____.
2330	650.6500 Construction Staking Structure Layout (structure) 05. S-66-609	LS	LUMP SUM	_____.
2340	650.6500 Construction Staking Structure Layout (structure) 06. S-66-610	LS	LUMP SUM	_____.
2350	650.6500 Construction Staking Structure Layout (structure) 07.OS-66-242	LS	LUMP SUM	_____.



Proposal Schedule of Items

Proposal ID: 20161108030

Project(s): 3360-09-72

SECTION: 0001 Roadway Items

Alt Set ID: Alt Mbr ID:

Proposal Line Number	Item ID Description	Approximate Quantity and Units	Unit Price	Bid Amount
2360	650.8000 Construction Staking Resurfacing Reference	37,599.000 LF	_____.	_____.
2370	650.8500 Construction Staking Electrical Installations (project) 01. 3360-09-72	LS	LUMP SUM	_____.
2380	650.9910 Construction Staking Supplemental Control (project) 01. 3360-09-72	LS	LUMP SUM	_____.
2390	650.9920 Construction Staking Slope Stakes	23,090.000 LF	_____.	_____.
2400	652.0225 Conduit Rigid Nonmetallic Schedule 40 2-Inch	2,229.000 LF	_____.	_____.
2410	652.0235 Conduit Rigid Nonmetallic Schedule 40 3-Inch	315.000 LF	_____.	_____.
2420	653.0140 Pull Boxes Steel 24x42-Inch	10.000 EACH	_____.	_____.
2430	653.0905 Removing Pull Boxes	13.000 EACH	_____.	_____.
2440	654.0101 Concrete Bases Type 1	2.000 EACH	_____.	_____.
2450	654.0105 Concrete Bases Type 5	15.000 EACH	_____.	_____.
2460	654.0224 Concrete Control Cabinet Bases Type L24	1.000 EACH	_____.	_____.
2470	655.0220 Cable Traffic Signal 4-14 AWG	356.000 LF	_____.	_____.
2480	655.0515 Electrical Wire Traffic Signals 10 AWG	393.000 LF	_____.	_____.
2490	655.0610 Electrical Wire Lighting 12 AWG	2,091.000 LF	_____.	_____.
2500	655.0615 Electrical Wire Lighting 10 AWG	500.000 LF	_____.	_____.



Proposal Schedule of Items

Proposal ID: 20161108030

Project(s): 3360-09-72

SECTION: 0001 Roadway Items

Alt Set ID: Alt Mbr ID:

Proposal Line Number	Item ID Description	Approximate Quantity and Units	Unit Price	Bid Amount
2510	655.0625 Electrical Wire Lighting 6 AWG	9,330.000 LF	_____	_____
2520	655.0640 Electrical Wire Lighting 1 AWG	18.000 LF	_____	_____
2530	656.0200 Electrical Service Meter Breaker Pedestal (location) 01. 3360-09-72	LS	LUMP SUM	_____
2540	657.0100 Pedestal Bases	2.000 EACH	_____	_____
2550	657.0255 Transformer Bases Breakaway 11 1/2-Inch Bolt Circle	15.000 EACH	_____	_____
2560	657.0322 Poles Type 5-Aluminum	15.000 EACH	_____	_____
2570	657.0420 Traffic Signal Standards Aluminum 13-FT	1.000 EACH	_____	_____
2580	657.0430 Traffic Signal Standards Aluminum 10-FT	1.000 EACH	_____	_____
2590	657.0610 Luminaire Arms Single Member 4 1/2-Inch Clamp 6-FT	7.000 EACH	_____	_____
2600	657.0715 Luminaire Arms Truss Type 4 1/2-Inch Clamp 15-FT	8.000 EACH	_____	_____
2610	658.0103 Traffic Signal Face 1-12 Inch Vertical	2.000 EACH	_____	_____
2620	658.0210 Backplates Signal Face 1 Section 12-Inch	2.000 EACH	_____	_____
2630	658.0600 Led Modules 12-Inch Red Ball	2.000 EACH	_____	_____
2640	658.5069 Signal Mounting Hardware (location) 01. STH 175 & Pioneer Rd	LS	LUMP SUM	_____
2650	659.1125 Luminaires Utility LED C	15.000 EACH	_____	_____



Proposal Schedule of Items

Proposal ID: 20161108030

Project(s): 3360-09-72

SECTION: 0001 Roadway Items

Alt Set ID:

Alt Mbr ID:

Proposal Line Number	Item ID Description	Approximate Quantity and Units	Unit Price	Bid Amount
2660	659.2124 Lighting Control Cabinets 120/240 24-Inch	1.000 EACH	_____	_____
2670	690.0150 Sawing Asphalt	21,392.000 LF	_____	_____
2680	690.0250 Sawing Concrete	810.000 LF	_____	_____
2690	ASP.1T0A On-the-Job Training Apprentice at \$5.00/HR	2,300.000 HRS	5.00000	11,500.00
2700	ASP.1T0G On-the-Job Training Graduate at \$5.00/HR	4,200.000 HRS	5.00000	21,000.00
2710	SPV.0060 Special 01. MGS Guardrail Terminal EAT TL-2	1.000 EACH	_____	_____
2730	SPV.0060 Special 03. Pavement Marking Grooved Preformed Thermoplastic Arrows Type 1	1.000 EACH	_____	_____
2740	SPV.0060 Special 04. Pavement Marking Grooved Preformed Thermoplastic Arrows Type 2	46.000 EACH	_____	_____
2750	SPV.0060 Special 05. Pavement Marking Grooved Preformed Thermoplastic Arrows Type 2R	1.000 EACH	_____	_____
2760	SPV.0060 Special 06. Pavement Marking Grooved Preformed Thermoplastic Arrows Type 3	6.000 EACH	_____	_____
2770	SPV.0060 Special 07. Pavement Marking Grooved Preformed Thermoplastic Arrows Type3R	3.000 EACH	_____	_____
2780	SPV.0060 Special 08. Pavement Marking Grooved Preformed Thermoplastic Words	31.000 EACH	_____	_____
2790	SPV.0060 Special 09. Pavement Marking Grooved Preformed Thermoplastic Yield Line 18-Inch	4.000 EACH	_____	_____



Proposal Schedule of Items

Proposal ID: 20161108030

Project(s): 3360-09-72

SECTION: 0001 Roadway Items

Alt Set ID: Alt Mbr ID:

Proposal Line Number	Item ID Description	Approximate Quantity and Units	Unit Price	Bid Amount
2800	SPV.0060 Special 10. Section Corner Monuments Special	4.000 EACH	_____.	_____.
2810	SPV.0060 Special 11. Adjusting Manhole Covers Special	23.000 EACH	_____.	_____.
2820	SPV.0075 Special 01. Construction Staking Miscellaneous	130.000 HRS	_____.	_____.
2830	SPV.0090 Special 01. Ditching, Shaping and Finishing	410.000 LF	_____.	_____.
2840	SPV.0090 Special 02. Concrete Curb & Gutter 6-Inch Sloped 24-Inch Type D	924.000 LF	_____.	_____.
2850	SPV.0090 Special 03. Fence Chain Link Vinyl Coated 4-FT	1,685.000 LF	_____.	_____.
2860	SPV.0090 Special 04. Pavement Marking Grooved Preformed Plastic Tape 4-Inch	8,688.000 LF	_____.	_____.
2870	SPV.0090 Special 05. Pavement Marking Grooved Preformed Plastic Tape 8-Inch	6,342.000 LF	_____.	_____.
2880	SPV.0090 Special 06. Pavement Marking Grooved Preformed Thermoplastic Crosswalk 24-Inch	408.000 LF	_____.	_____.
2890	SPV.0090 Special 07. Pavement Marking Grooved Preformed Thermoplastic Stop Bar 18-Inch	885.000 LF	_____.	_____.
2900	SPV.0090 Special 08. Pavement Marking Grooved Preformed Thermoplastic 8-Inch	60.000 LF	_____.	_____.
2910	SPV.0090 Special 09. Concrete Curb and Gutter 30-Inch Type D HES	600.000 LF	_____.	_____.
2920	SPV.0090 Special 10. Concrete Curb and Gutter 4-Inch Sloped 36-Inch Type T HES	95.000 LF	_____.	_____.



Proposal Schedule of Items

Proposal ID: 20161108030

Project(s): 3360-09-72

SECTION: 0001 Roadway Items

Alt Set ID: Alt Mbr ID:

Proposal Line Number	Item ID Description	Approximate Quantity and Units	Unit Price	Bid Amount
2930	SPV.0105 Special 01. Lighting System Integrator	LS	LUMP SUM	_____.
2940	SPV.0105 Special 02. Lighting System Survey	LS	LUMP SUM	_____.
2950	SPV.0105 Special 03. Transport & Install Flasher Control Box STH 175 & Pioneer Rd	LS	LUMP SUM	_____.
2960	SPV.0105 Special 04. Remove Traffic Signals STH 175 & Pioneer Rd	LS	LUMP SUM	_____.
2970	SPV.0105 Special 05. Remove Traffic Signals STH 175 & Lannon Rd	LS	LUMP SUM	_____.
2980	SPV.0105 Special 06. Remove Loop Detector Wire & Lead In Cable STH 175 & Lannon Rd	LS	LUMP SUM	_____.
2990	SPV.0105 Special 07. Temporary Water Diversion Willow Creek	LS	LUMP SUM	_____.
3000	SPV.0105 Special 08. Temporary Water Diversion Little Cedar Creek	LS	LUMP SUM	_____.
3010	SPV.0165 Special 01. Wall Modular Block Gravity LRFD	1,938.000 SF	_____.	_____.
3020	SPV.0170 Special 01. Preperation of Foundation for Asphaltic Shoulders Special	3.000 STA	_____.	_____.
3030	SPV.0195 Special 01. HMA Pavement 3 LT 58-28 S 3.0% VA Regression Special	30,989.000 TON	_____.	_____.
3040	SPV.0195 Special 02. HMA Pavement 4 LT 58-28 S 3.0% VA Regression Special	20,333.000 TON	_____.	_____.
3050	SPV.0195 Special 03. HMA Pavement 3 MT 58-28 S 3.0% VA Regression Special	1,882.000 TON	_____.	_____.
3060	SPV.0195 Special 04. HMA Pavement 4 MT 58-28 S 3.0% VA Regression Special	878.000 TON	_____.	_____.



Proposal Schedule of Items

Proposal ID: 20161108030

Project(s): 3360-09-72

SECTION: 0001 Roadway Items

Alt Set ID: Alt Mbr ID:

Proposal Line Number	Item ID Description	Approximate Quantity and Units	Unit Price	Bid Amount
3070	460.2010 Incentive Air Voids HMA Pavement	29,920.000 DOL	1.00000	29,920.00
3080	SPV.0060 Special 12. HMA Percent Within Limits (PWL) Test Strip	3.000 EACH	_____.	_____.
3090	614.0370 Steel Plate Beam Guard Energy Absorbing Terminal	3.000 EACH	_____.	_____.
Section: 0001			Total:	_____.
			Total Bid:	_____.