



Wisconsin Department of Transportation

December 6, 2016

Division of Transportation Systems Development

Bureau of Project Development
 4802 Sheboygan Avenue, Rm 601
 P O Box 7916
 Madison, WI 53707-7916

Telephone: (608) 266-1631
 Facsimile (FAX): (608) 266-8459

NOTICE TO ALL CONTRACTORS:

Proposal: #07 5804-00-74, WISC 2016 469
Fritz Road, Town of Montrose
Flynn Creek Bridge B-13-0675
Town Road
Dane County

Letting of December 13, 2016

This is Addendum No. 01, which provides for the following:

Special Provisions

Revised Special Provisions	
Article No.	Description
11	Removing Old Structure Over Waterway with Minimal Debris Station 2+00, Item 203.0600.S.01

Schedule of Items

Revised Bid Item Quantities					
Bid Item	Item Description	Unit	Old Quantity	Revised Quantity	Proposal Total
305.0120	Base Aggregate Dense, 1 ¼ inch	Ton	125	20	145
455.0605	Tack Coat	Gal	15	-5	10
465.0105	Asphaltic Surface	Ton	70	-24	46

Added Bid Item Quantities					
Bid Item	Item Description	Unit	Old Quantity	Revised Quantity	Proposal Total
415.0120	Concrete Pavement, 12 inch	SY	0	21	21
415.0410	Concrete Pavement, Approach Slab	SY	0	87	87

Deleted Bid Item Quantities					
Bid Item	Item Description	Unit	Old Quantity	Revised Quantity	Proposal Total
305.0110	Base Aggregate Dense, ¾ inch	Ton	10	-10	0

Plan Sheets

Revised Plan Sheets	
Plan Sheet	Plan Sheet Title (brief description of changes to sheet)
02	Typical Sections
05	Miscellaneous Quantities
07	Plan and Profile

Added Plan Sheets	
Plan Sheet	Plan Sheet Title (brief description of why sheet was added)
11A	SDD - Concrete Pavement Approach Slab

The responsibility for notifying potential subcontractors and suppliers of these changes remains with the prime contractor.

Sincerely,

Mike Coleman

Proposal Development Specialist
Proposal Management Section

ADDENDUM NO. 01

5804-00-74

December 6, 2016

Special Provisions

11. Removing Old Structure Over Waterway With Minimal Debris Station 2+00, Item 203.0600.S.01

Conform to standard spec 203 as modified in this special provision.

Add the following to standard spec 203:

203.3.6 Removals Over Waterways and Wetlands

203.3.6.2 Removing Old Structure Over Waterway with Minimal Debris

- (1) Remove the existing structure P-13-0216 over the Flynn Creek in large sections and conforming to the contractor's approved structure removal and clean-up plan. During superstructure removal, prevent all large pieces and minimize the number of small pieces from entering the waterway or wetland. Remove all reinforcing steel, all concrete, and all other debris that falls into the waterway or wetland. The contractor may leave limited amounts of small concrete pieces scattered over the waterway floor or wetland only if the engineer allows.
- (2) Submit a structure removal and clean-up plan as part of the erosion control implementation plan required under standard spec 107.20. Do not start work under the structure removal and clean-up plan without the department's written approval of the plan. Include the following information in the structure removal and clean-up plan:
 - Methods and schedule to remove the structure in stages.
 - Provide a temporary drainage facility plan necessary to protect the work, adjacent property, and to maintain the normal flow of Flynn Creek. Maintain temporary drainage in effective operating condition, as the engineer approves, until the permanent structure B-13-0675 and rip rap heavy installation is complete
 - Methods to control potentially harmful environmental impacts.
 - Methods for superstructure removal that prevent all large pieces and minimize the number of small pieces from entering the waterway or wetlands.
 - Methods to control dust and contain slurry.
 - Methods for removing piers and abutments. If blasting in water, include restrictions that regulatory agencies and the contract require.
 - Methods for cleaning the waterway or wetlands.
- (3) If stockpiling spoil material, place it on an upland site an adequate distance from the waterway, wetland, or any open water created by excavation. Install silt fence between the spoil pile and the waterway, wetland, or excavation site.

Add the following Removing Old Structure bid item to standard spec 203.5.1:

ITEM NUMBER	DESCRIPTION	UNIT
203.0600.S.01	Removing Old Structure Over Waterway With Minimal Debris Station 2+00	LS

Schedule of Items

Attached, dated December 6, 2016, are the revised Schedule of Items Pages. All pages of the Schedule of Items are being replaced.

Plan Sheets

The following 8½ x 11-inch sheets are attached and made part of the plans for this proposal:

Revised: 2, 5 and 7

Added: 11A

END OF ADDENDUM

ALL ITEMS ARE CATEGORY 0010 UNLESS OTHERWISE STATED

CLEARING AND GRUBBING

STATION	TO	STATION	LOCATION	201.0105	201.0205
				CLEARING STA	GRUBBING STA
1+25	-	2+75	FRITZ RD	2	2
TOTALS				2	2

FINISHING

STATION	TO	STATION	LOCATION	213.0100
				FINISHING ROADWAY (PROJECT) EACH
1+25	-	2+75	FRITZ ROAD	1
TOTALS				1

HMA PAVEMENT ITEMS

STATION	TO	STATION	LOCATION	455.0605	465.0105
				TACK COAT GAL	ASPHALTIC SURFACE TON
1+25	-	2+75	FRITZ ROAD	10	46
TOTALS				10	46

EROSION CONTROL

LOCATION	628.1504	628.1520	628.1905	628.1910	628.2023	628.6005
	SILT FENCE	SILT FENCE	MOBILIZATIONS EROSION CONTROL	MOBILIZATIONS EROSION CONTROL	EROSION MAT CLASS II TYPE B	TURBIDITY BARRIER
FRITZ ROAD	LF 300	LF 300	EACH 3	EACH 3	SY 300	SY 50
TOTALS		300	3	3	300	50

EXCAVATION COMMON

STATION	TO	STATION	LOCATION	205.0100	208.0100
				EXCAVATION COMMON CY	BORROW CY
1+25	-	2+75	FRITZ ROAD	13	385
TOTALS				13	385

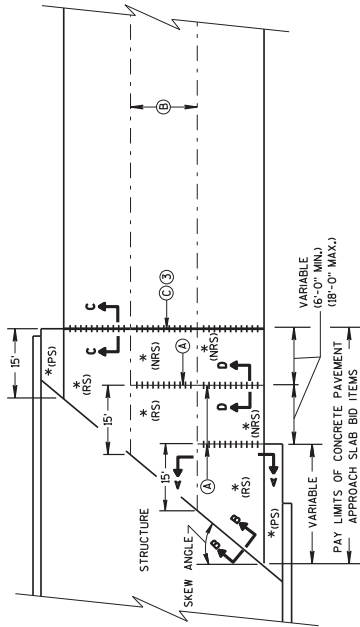
BASE AGGREGATE DENSE

STATION	TO	STATION	LOCATION	305.0120
				1 1/4 INCH TON
1+25	-	2+75	FRITZ ROAD	145
TOTALS				145

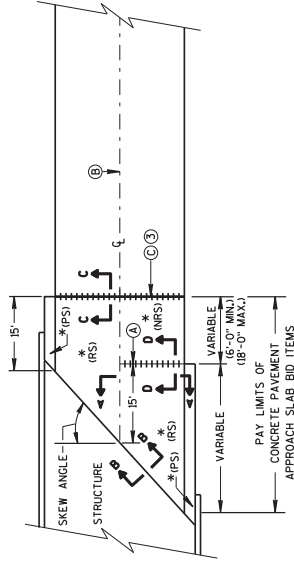
CONCRETE PAVEMENT

STATION	TO	STATION	LOCATION	415.0120	415.0410
				CONCRETE PAVEMENT 12-INCH SY	CONCRETE PAVEMENT APPROACH SLAB SY
1+25	-	2+75	FRITZ ROAD	21	87
TOTALS				21	87

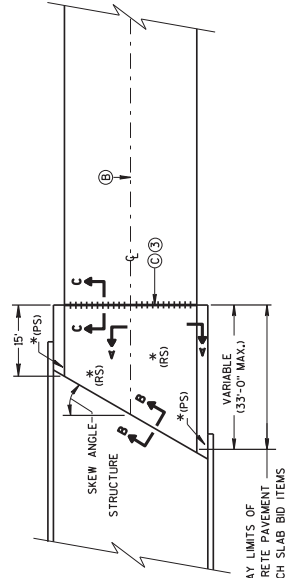
Addendum No. 01
ID 5804-00-74
Revised Sheet 5
December 6, 2016



**SKEWED APPROACH
(PAVEMENT MORE THAN 2 LANES)**



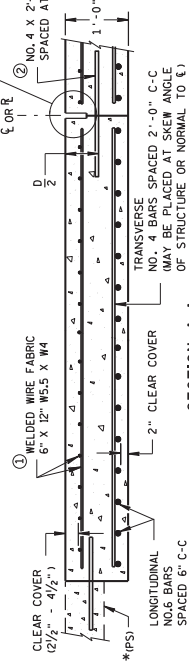
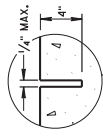
**SKEWS > 20°
(PAVEMENT WIDTH ≤ 30')**



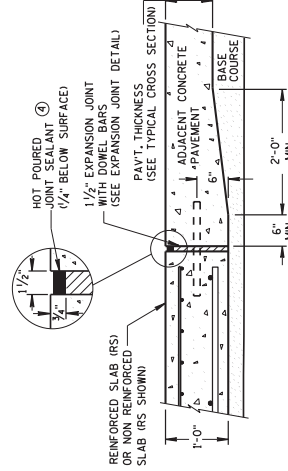
**APPROACH SLAB AND ADJACENT PAVEMENT
(PAVEMENT WIDTH ≤ 30')**

- * (RS) = REINFORCED CONCRETE SLAB
- * (PS) = PAVED CONCRETE SHOULDER OR CONCRETE DRAINAGE SLAB (SEE DETAILS ELSEWHERE IN THE PLAN)
- * (NRS) = NON-REINFORCED CONCRETE SLAB
- *** STANDARD DOWEL BAR DIAMETER (SEE SDD 15C11, & SDD 15C13)

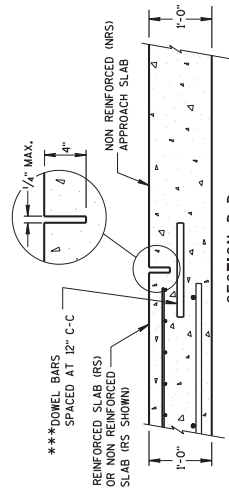
- Ⓐ STANDARD CONTRACTION JOINT NORMAL TO R OR Q
- Ⓑ STANDARD LONGITUDINAL JOINT WITH TIE BARS.
- Ⓒ 1/2" EXPANSION JOINT WITH DOWEL BARS NORMAL TO R OR Q



**SECTION A-A
REINFORCEMENT POSITIONING DETAIL**



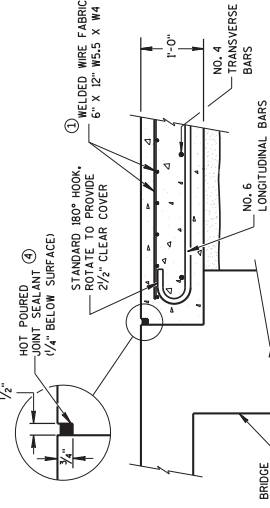
**SECTION C-C
TRANSITION DETAIL
APPROACH SLAB TO ADJACENT PAVEMENT**



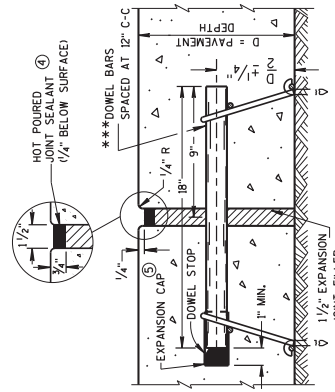
**SECTION D-D
CONTRACTION JOINT**

GENERAL NOTES

- 1 THE CONTRACTOR MAY SPlice NO. 6 BARS IN THE APPROACH SLAB FOR SKEWED STRUCTURES ONLY. STAGGER SPICES WITH A MAXIMUM OF ONE SPICE PER BAR. THE LENGTH OF LAP IS 20 INCHES.
- TACK WELD DOWEL BARS TO THE BASKETS ON ALTERNATE ENDS.
- 2 THE CONTRACTOR MAY USE NO. 4 BARS SPACED AT 2'-0" C-C IN BOTH THE LONGITUDINAL AND TRANSVERSE DIRECTIONS FOR TOP REINFORCEMENT AS AN ALTERNATIVE TO THE WELDED WIRE FABRIC.
- 3 THE CONTRACTOR MAY OMIT TIE BARS BETWEEN REINFORCED SLABS WHERE SLAB REINFORCEMENT BARS EXTEND ACROSS THE CENTERLINE OR REFERENCE LINE.
- 4 DO NOT CONSTRUCT AN EXPANSION JOINT OR INSTALL DOWEL BARS WHEN ABUTTING AN HMA PAVEMENT.
- 5 USE A JOINT SEALANT MEETING THE REQUIREMENTS OF ASTM D6690.
- 6 PLACE EXPANSION CAP ON THE END OF THE DOWEL THAT IS NOT TACK WELDED TO THE BASKET. DO NOT FORCE DOWEL BAR PAST THE DOWEL STOP.



**SECTION B-B
BEND DETAIL
BOTTOM REINFORCEMENT**



EXPANSION JOINT DETAIL

Addendum No. 01
 ID 5804-00-74
 Added Sheet 11A
 December 6, 2016

CONCRETE PAVEMENT APPROACH SLAB
STATE OF WISCONSIN DEPARTMENT OF TRANSPORTATION
APPROVED June, 2015 DATE
/s/ Peter Kemp, P.E. PAVEMENT SUPERVISOR PHWA



Proposal Schedule of Items

Proposal ID: 20161213007

Project(s): 5804-00-74

SECTION: 0001 Contract Items

Alt Set ID:

Alt Mbr ID:

Proposal Line Number	Item ID Description	Approximate Quantity and Units	Unit Price	Bid Amount
0010	201.0105 Clearing	2.000 STA	_____.	_____.
0020	201.0205 Grubbing	2.000 STA	_____.	_____.
0030	203.0600.S Removing Old Structure Over Waterway With Minimal Debris (station) 01. 2+00	LS	LUMP SUM	_____.
0040	205.0100 Excavation Common **P**	13.000 CY	_____.	_____.
0050	206.1000 Excavation for Structures Bridges (structure) 01. B-13-0675	LS	LUMP SUM	_____.
0060	208.0100 Borrow	385.000 CY	_____.	_____.
0070	210.1500 Backfill Structure Type A	240.000 TON	_____.	_____.
0080	213.0100 Finishing Roadway (project) 01. 5804- 00-74	1.000 EACH	_____.	_____.
0100	305.0120 Base Aggregate Dense 1 1/4-Inch	145.000 TON	_____.	_____.
0110	455.0605 Tack Coat	10.000 GAL	_____.	_____.
0120	465.0105 Asphaltic Surface	46.000 TON	_____.	_____.
0130	502.0100 Concrete Masonry Bridges	137.000 CY	_____.	_____.
0140	502.3200 Protective Surface Treatment	138.000 SY	_____.	_____.
0150	505.0400 Bar Steel Reinforcement HS Structures	3,440.000 LB	_____.	_____.
0160	505.0600 Bar Steel Reinforcement HS Coated Structures	16,540.000 LB	_____.	_____.
0170	513.4061 Railing Tubular Type M (structure) 01. B- 13-0675	126.000 LF	_____.	_____.



Proposal Schedule of Items

Proposal ID: 20161213007

Project(s): 5804-00-74

SECTION: 0001

Contract Items

Alt Set ID:

Alt Mbr ID:

Proposal Line Number	Item ID Description	Approximate Quantity and Units	Unit Price	Bid Amount
0180	516.0500 Rubberized Membrane Waterproofing	18.000 SY	_____.	_____.
0190	550.0500 Pile Points	10.000 EACH	_____.	_____.
0200	550.1100 Piling Steel HP 10-Inch X 42 Lb	350.000 LF	_____.	_____.
0210	606.0300 Riprap Heavy	100.000 CY	_____.	_____.
0220	612.0406 Pipe Underdrain Wrapped 6-Inch	160.000 LF	_____.	_____.
0230	619.1000 Mobilization	1.000 EACH	_____.	_____.
0240	624.0100 Water	3.000 MGAL	_____.	_____.
0250	625.0500 Salvaged Topsoil	250.000 SY	_____.	_____.
0260	627.0200 Mulching	250.000 SY	_____.	_____.
0270	628.1504 Silt Fence	300.000 LF	_____.	_____.
0280	628.1520 Silt Fence Maintenance	300.000 LF	_____.	_____.
0290	628.1905 Mobilizations Erosion Control	3.000 EACH	_____.	_____.
0300	628.1910 Mobilizations Emergency Erosion Control	3.000 EACH	_____.	_____.
0310	628.2023 Erosion Mat Class II Type B	300.000 SY	_____.	_____.
0320	628.6005 Turbidity Barriers	50.000 SY	_____.	_____.
0330	629.0210 Fertilizer Type B	3.000 CWT	_____.	_____.
0340	630.0120 Seeding Mixture No. 20	12.000 LB	_____.	_____.



Proposal Schedule of Items

Proposal ID: 20161213007

Project(s): 5804-00-74

SECTION: 0001

Contract Items

Alt Set ID:

Alt Mbr ID:

Proposal Line Number	Item ID Description	Approximate Quantity and Units	Unit Price	Bid Amount
0350	630.0200 Seeding Temporary	12.000 LB	_____.	_____.
0360	634.0612 Posts Wood 4x6-Inch X 12-FT	4.000 EACH	_____.	_____.
0370	637.2230 Signs Type II Reflective F	12.000 SF	_____.	_____.
0380	638.2602 Removing Signs Type II	4.000 EACH	_____.	_____.
0390	638.3000 Removing Small Sign Supports	4.000 EACH	_____.	_____.
0400	642.5001 Field Office Type B	1.000 EACH	_____.	_____.
0410	643.0100 Traffic Control (project) 01. 5804-00-74	1.000 EACH	_____.	_____.
0420	643.0420 Traffic Control Barricades Type III	1,116.000 DAY	_____.	_____.
0430	643.0705 Traffic Control Warning Lights Type A	2,232.000 DAY	_____.	_____.
0440	643.0900 Traffic Control Signs	372.000 DAY	_____.	_____.
0450	645.0120 Geotextile Type HR	200.000 SY	_____.	_____.
0460	650.4500 Construction Staking Subgrade	150.000 LF	_____.	_____.
0470	650.5000 Construction Staking Base	150.000 LF	_____.	_____.
0480	650.6500 Construction Staking Structure Layout (structure) 01. B-13-0675	LS	LUMP SUM	_____.
0490	650.9910 Construction Staking Supplemental Control (project) 01. 5804-00-70	LS	LUMP SUM	_____.
0500	650.9920 Construction Staking Slope Stakes	300.000 LF	_____.	_____.
0510	690.0150 Sawing Asphalt	40.000 LF	_____.	_____.



Proposal Schedule of Items

Proposal ID: 20161213007

Project(s): 5804-00-74

SECTION: 0001

Contract Items

Alt Set ID:

Alt Mbr ID:

Proposal Line Number	Item ID Description	Approximate Quantity and Units	Unit Price	Bid Amount
0520	715.0502 Incentive Strength Concrete Structures	820.000 DOL	1.00000	820.00
0530	415.0120 Concrete Pavement 12-Inch	21.000 SY	_____.	_____.
0540	415.0410 Concrete Pavement Approach Slab	87.000 SY	_____.	_____.
Section: 0001			Total:	_____.
			Total Bid:	_____.