



Wisconsin Department of Transportation

January 3, 2017

Division of Transportation Systems Development

Bureau of Project Development
 4802 Sheboygan Avenue, Rm 601
 P O Box 7916
 Madison, WI 53707-7916

Telephone: (608) 266-1631
 Facsimile (FAX): (608) 266-8459

NOTICE TO ALL CONTRACTORS:

**Proposal #01: 3671-00-71, WISC 2017001
 Cambridge - London
 USH 12 to CTH O
 STH 134
 Dane & Jefferson Counties**

Letting of January 10, 2017

This is Addendum No. 1, which provides for the following:

Special Provisions

Revised Special Provisions	
Article No.	Description
6	Utilities

Schedule of Items

Revised Bid Item Quantities					
Bid Item	Item Description	Unit	Old Quantity	Revised Quantity	Proposal Total
522.1024	Apron Endwalls for Culvert Pipe Reinforced Concrete 24-Inch	Each	9	-1	8
611.0530	Manhole Covers Type J	Each	1	4	5

Added Bid Item Quantities					
Bid Item	Item Description	Unit	Old Quantity	Revised Quantity	Proposal Total
520.1024	Apron Endwalls for Culvert Pipe 24-Inch	Each	0	1	1
608.3024	Storm Sewer Pipe Class III-A 24-Inch	LF	0	491	491
6110420	Reconstructing Manholes	Each	0	2	2

Deleted Bid Item Quantities					
Bid Item	Item Description	Unit	Old Quantity	Revised Quantity	Proposal Total
608.0324	Storm Sewer Pipe Reinforced Concrete Class III 24-Inch	LF	491	-491	0

Plan Sheets

Revised Plan Sheets	
Plan Sheet	Plan Sheet Title (brief description of changes to sheet)
14	Added new construction detail for reconstructing manholes
28	Storm Sewer Profile updated notes
49	Updated MQ tables
50	Updated MQ tables
62	Added notes for location of reconstructing manholes
74	Added notes for location of reconstructing manholes

The responsibility for notifying potential subcontractors and suppliers of these changes remains with the prime contractor.

Sincerely,

Mike Coleman

Proposal Development Specialist
Proposal Management Section

ADDENDUM NO. 01

3671-00-71

January 3, 2017

Special Provisions

6. Utilities

Replace the last two paragraphs with the following:

Thompson Correctional Center - Sewer - has a sanitary sewer force main that parallels the south side of State Farm Road and turns south paralleling STH 134 on the west side. There are no conflicts with the main. There are two vaults that require adjustment. These vaults are located at Sta. 149+97.7, 24' LT and at Sta. 65+29.4, 7.6' RT. The vault covers will be removed and a 5' diameter manhole adjustment section will be placed with a new manhole casting within the pavement of the relocated State Farm intersection. This work will be completed during construction as part of the contract.

The following utility companies have facilities within the project limits. No conflicts are anticipated and no relocation work will be done.

ATC Management Inc.
Alliant Energy (WP&L) – Gas
Thompson Correctional Center – Water
Village of Cambridge - Sewer
Village of Cambridge - Water
We Energies – Electric

Schedule of Items

Attached, dated January 3, 2017, are the revised Schedule of Items Pages 1 – 7.

Plan Sheets

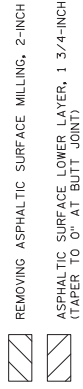
The following 8½ x 11-inch sheets are attached and made part of the plans for this proposal:

Revised: 14, 28, 49, 50, 62, and 74.

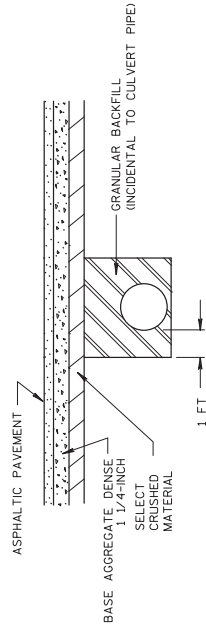
END OF ADDENDUM

Addendum No. 01
 ID 3671-00-71
 Revised Sheet 14
 January 3, 2017

2

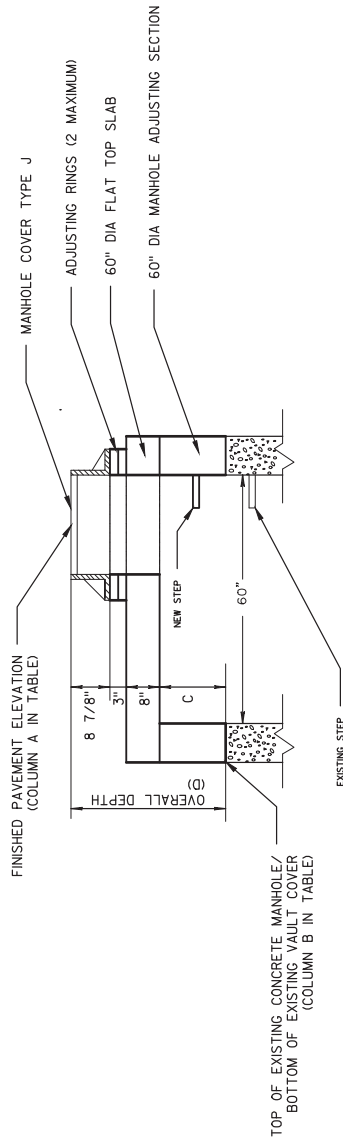


BUTT JOINT DETAIL
 MAINLINE AND SIDEROADS



DETAIL FOR CULVERT PIPE INSTALLATION

STA. 122+25
 STA. 142+45
 STA. 158+50
 STA. 233+63
 STA. 64+21



DETAIL FOR RECONSTRUCTING MANHOLE

STA. 149+97.7, 24' LT
 STA. 65+29.4, 7.6' RT

STATION/LOCATION	A ELEV.	B ELEV.	C RISER DEPTH	D OVERALL DEPTH
149+97.7, 24' LT	869.93	865.91	2.36'	4.02'
65+29.4, 7.6' RT	869.68	865.82	2.20'	3.86'

- NOTES:
1. FIELD VERIFY ELEVATION B AND DIMENSION C IN THE TABLE ABOVE PRIOR TO ORDERING 60" MANHOLE SECTION.
 2. ALIGN NEW STEP WITH EXISTING MANHOLE STEP. PLACE NEW STEP AT MID POINT OF DIMENSION C.
 3. CENTER MANHOLE COVER TYPE J TO ALIGN EDGE WITH STEP LOCATION.
 4. A MAXIMUM OF TWO ADJUSTMENT RINGS ALLOWED.

PROJECT NO: 3671-00-71

HWY: STH 134

COUNTY: DANE AND JEFFERSON

CONSTRUCTION DETAILS

SHEET 14

E
 WSDOT/CADD SHEET 42

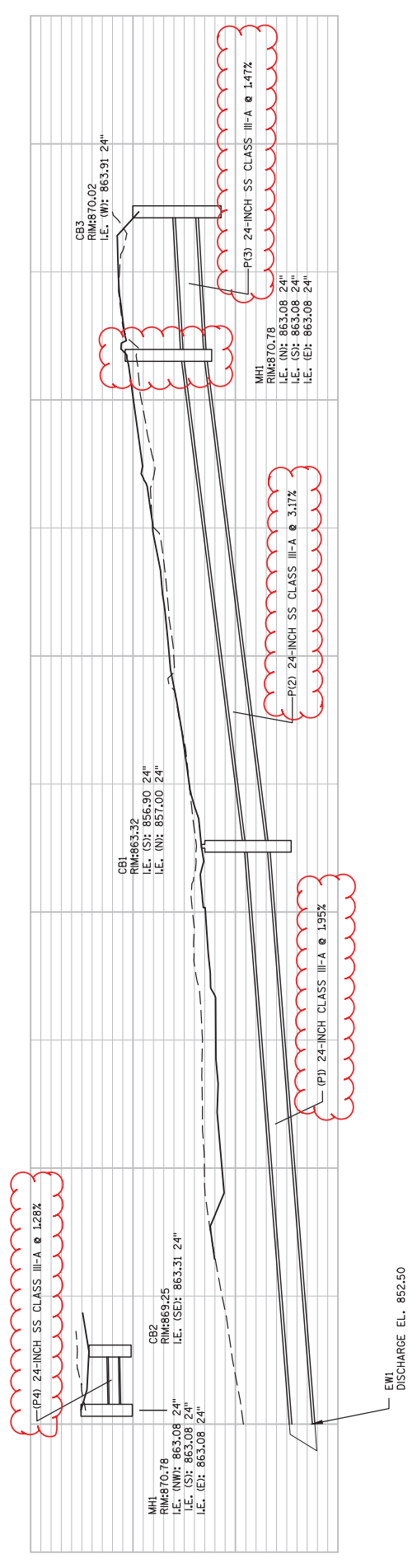
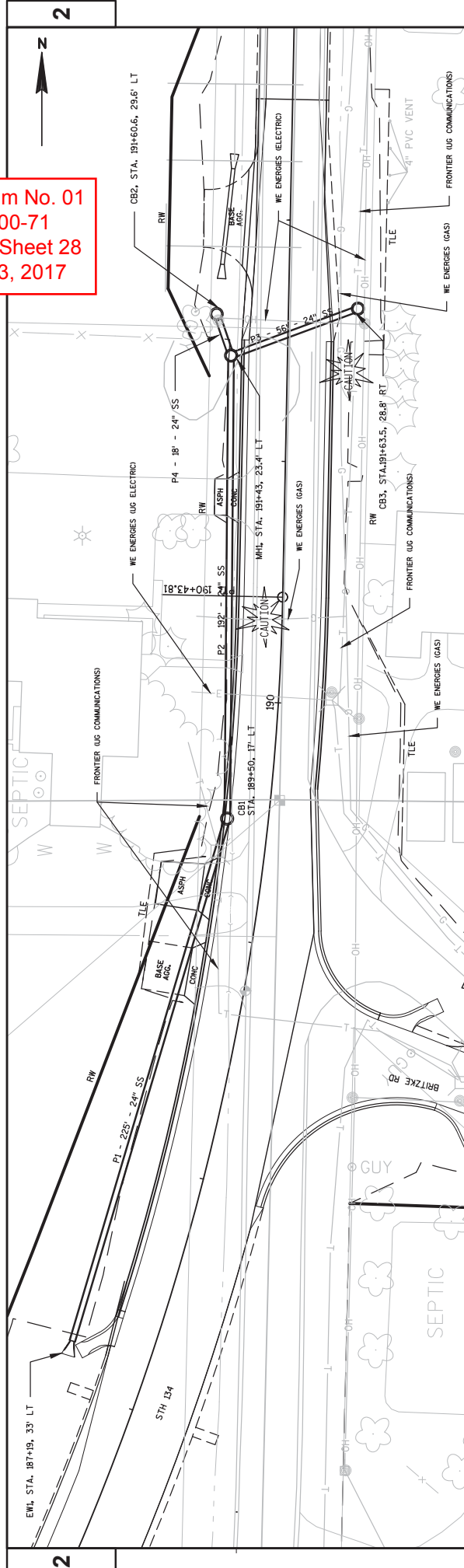
FILE NAME : L:\PROJECTS\12516.DWG\36710001\SHEET\SR\AN021001.LO.DWG

PLOT DATE : 12/12/2016 10:56 AM

PLOT BY : MOYER, TIM

PLOT SCALE : 1:10.XREF

Addendum No. 01
 ID 3671-00-71
 Revised Sheet 28
 January 3, 2017



CULVERT ITEMS	STATION	LOCATION	12-INCH 18-INCH		LF	24-INCH	APRON ENDWALLS FOR CULVERT PIPE REINFORCED CONCRETE CLASS IV	520.1012	520.1018	521.1518	522.1024	523.0119	523.0429	523.0519	523.0529	523.0553	633.5200
			12-INCH	18-INCH													
MAINLINE																	
MINIMUM WALL THICKNESS			0.064	0.060	0.064	0.060											
STEEL																	
ALUMINUM																	
122+25	MAINLINE		-	-	42	-											
142+45	MAINLINE		-	-	-	-											
158+50	MAINLINE		-	-	64	-											
155+28, LT	DRIVEWAY		-	-	50	-											
169+53	MAINLINE		-	-	-	-											
180+51.50	MAINLINE		-	-	-	-											
223+83	MAINLINE		-	-	39	-											
164+53, RT	DRIVEWAY		-	-	56	-											
171+50, RT	DRIVEWAY		-	-	52	-											
171+50, LT	DRIVEWAY		-	-	52	-											
64+21.2	STATE FARM		-	-	48	-											
71+10B	BRITZKE DRIVEWAY		-	-	60	-											
72+10B	BRITZKE DRIVEWAY		-	-	28	-											
TOTALS			28	270	193	2	2	2	2	8	8	56	42	80	2	2	14*

* ADDITIONAL QUANTITIES SHOWN IN THE DRAINAGE STRUCTURES TABLE.

Addendum No. 01
ID 3671-00-71
Revised Sheet 49
January 3, 2017

CONCRETE CURB AND GUTTER ITEMS		
ITEM NO.	DESCRIPTION	QUANTITY
601.0557	CONCRETE CURB & GUTTER 6-INCH SLOPED 36-INCH TYPE D	2719
	LOCATION / DESCRIPTION	
	STATION TO STATION LOCATION	LF
	109+00 - 114+00 RT	500
	109+00 - 112+57.6 LT	360
	113+49 - 116+50 LT	226
	147+65 - 150+50 RT	285
	STATE FARM - SOUTHWEST QUADRANT	61
	STATE FARM - NORTHWEST QUADRANT	90
	163+50 - 168+50 LT	500
	187+35 - 191+50 LT	415
	BRITZKE ROAD - SOUTHEAST QUADRANT	96
	188+77 - 191+50 RT	186
TOTALS		2719

STORM SEWER PIPE CASS III-A SUMMARY							
PIPE NUMBER	FROM	TO	24-INCH L.F.	INVERT ELEVATION	DISCHARGE ELEVATION	PIPE SLOPE %	COMMENTS
P2	MH1	CB1	192	863.08	857.00	3.17%	
P3	CB3	MH1	56	863.91	863.08	1.48%	
P4	CB2	MH1	18	863.31	863.08	1.28%	
TOTALS			491				

RIPRAP MEDIUM AND GEOTEXTILE FABRIC TYPE HR			
ITEM NO.	DESCRIPTION	QUANTITY	S.Y.
606.0100	RIPRAP MEDIUM	9	32
645.0120	GEOTEXTILE FABRIC TYPE HR	9	32
TOTALS		9	32

RECONSTRUCTING MANHOLES			
STATION	LOCATION	RECONSTRUCTING MANHOLES EACH	COMMENTS
149+97.7	24' LT	1	
65+29.4	7.6' RT	1	
TOTALS		2	

ALL QUANTITIES ARE CATEGORY 0000.

Addendum No. 01
ID 3671-00-71
Revised Sheet 50
January 3, 2017

DRAINAGE STRUCTURES

STRUCTURE NUMBER	STATION	OFFSET	STRUCTURE	TYPE	COVER TYPE	RIM OR RIM FLANGE ELEVATION	STRUCTURE INVERT ELEVATION	DEPTH	REMARKS
EW1	187+19	33' LT	ENDWALL	24-INCH	HM	863.32	856.90	7.25	MODIFY FLAT TOP SLAB TO ACCOMMODATE HM CASTING
CB1	189+50	17' LT	CB	4' DIA	HM	869.25	863.31	6.55	MODIFY FLAT TOP SLAB TO ACCOMMODATE C CASTING
CB2	191+60.6	29.6' LT	CB	4' DIA	C	870.02	863.91	6.72	MODIFY FLAT TOP SLAB TO ACCOMMODATE C CASTING
CB3	191+63.5	28.8' RT	CB	4' DIA	C	870.02	863.91	6.72	MODIFY FLAT TOP SLAB TO ACCOMMODATE C CASTING
MH1	191+43	23.4' LT	MH	5' DIA	J	870.78	863.08	6.31	RECONSTRUCTING MANHOLE W/ FLAT TOP SLAB
EXISTING	189+97.7	24' LT	EXISTING	5' DIA	J	869.95	863.08	6.31	RECONSTRUCTING MANHOLE W/ FLAT TOP SLAB
EXISTING	65+29.4	7.6' RT	EXISTING	5' DIA	J	869.68	863.08	6.31	RECONSTRUCTING MANHOLE W/ FLAT TOP SLAB

DEPTH OF STRUCTURE IS GUTTER FLANGE OR RIM ELEVATION MINUS THE DEPTH OF FRAME AND RINGS MINUS THE FLOWLINE ELEVATION PLUS 2' SUMP. NO SUMP ON MH 1.

DEPTH FOR FRAME AND RINGS FOR:
TYPE J = 1.39' (INCLUDES 0.64' FOR ADJUSTING RINGS.)
TYPE HM = 1.17' (INCLUDES 0.64' FOR ADJUSTING RINGS.)
TYPE C = 1.39' (INCLUDES 0.64' FOR ADJUSTING RINGS.)

DRAINAGE STRUCTURE SUMMARY TABLE

ITEM NO.	DESCRIPTION	EACH
520.1024	APRON ENDWALLS FOR CULVERT PIPE 24-INCH	1
611.0530	MANHOLE COVERS TYPE J	5
611.0627	INLET COVERS TYPE HM	1
611.0612	INLET COVERS TYPE C	2
611.2004	MANHOLES 4-FT DIAMETER	1
611.1104	CATCH BASINS 4FT DIAMETER	3
633.5200*	MARKERS CULVERT END *	1*

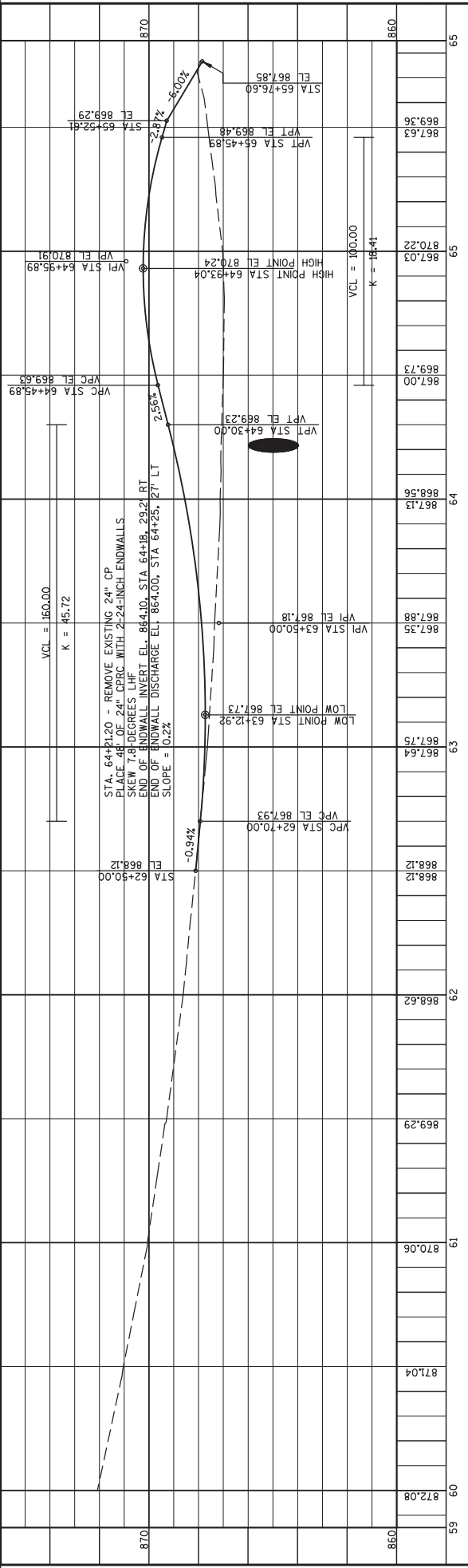
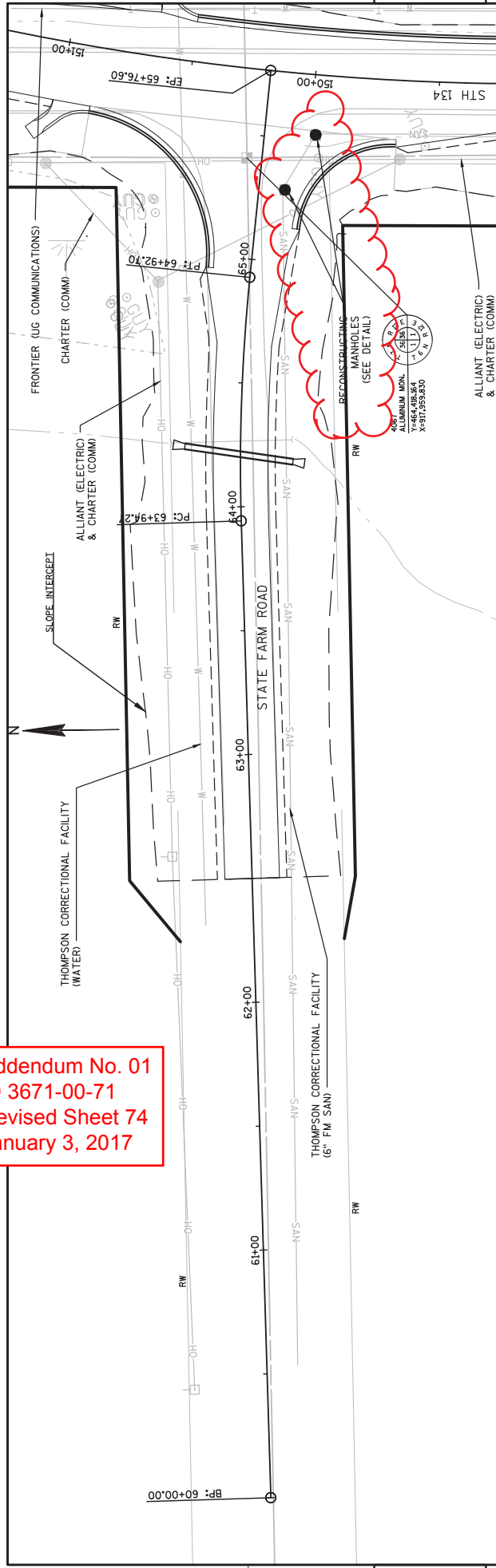
* ADDITIONAL QUANTITIES SHOWN IN THE CULVERT PIPE TABLE.

SALVAGED TOPSOIL, SEED, FERTILIZER, E-MAT AND MULCH

FROM	LIMITS	TO	LOCATION	ITEM NO. SAVAGED TOPSOIL	S.Y.	ITEM NO. MULCHING	S.Y.	ITEM NO. EROSION MAT CLASS II TYPE B	S.Y.	ITEM NO. FERTILIZER TYPE B	CWT	ITEM NO. SEEDING MIXTURE NO. 20	LB
SOUTH PROJECT LIMIT			BUCKINGHAM CT	287		287				0.2		630.0120	5
BUCKINGHAM CT			WOODHAVEN CT	1406		1406				0.9		628.0210	25
WOODHAVEN CT			STATE FARM	2483		2483				1.6			45
STATE FARM			STRUCTURE	9620		9620				6.1			173
STRUCTURE			BRITZKE RD	2744		817		1927		1.7			15
BRITZKE RD			MUNSON RD	1686		1363		323		1.1			25
MUNSON RD			MAIN ST	2376		2376				1.5			43
SOUTH PROJECT LIMIT			BUCKINGHAM CT	162		162				0.1			3
BUCKINGHAM CT			WOODHAVEN CT	353		353				0.2			6
WOODHAVEN CT			STATE FARM	2458		2458				1.5			44
STATE FARM			STRUCTURE	8585		8585				5.4			155
STRUCTURE			BRITZKE RD	5205		699		4506		3.3			13
BRITZKE RD			MUNSON RD	1843		1654		189		1.2			30
MUNSON RD			MAIN ST	2072		2072				1.3			37
PROJECT LIMIT			STATE FARM RD	1351		1351				0.9			24
STATE FARM RD			BRITZKE RD	1212		1212				0.8			22
BRITZKE RD			PROJECT LIMIT	10957		9202		1754		6.9			166
UNDISTRIBUTED		25%											
TOTALS				54800		46100		8700		34.5			830

ALL QUANTITIES ARE CATEGORY 0000.

Addendum No. 01
 ID 3671-00-71
 Revised Sheet 74
 January 3, 2017



Station	Elevation
872.08	872.08
871.04	871.04
870.06	870.06
869.29	869.29
868.62	868.62
868.12	868.12
867.64	867.64
867.15	867.15
867.35	867.35
867.88	867.88
867.13	867.13
868.56	868.56
867.00	867.00
869.73	869.73
867.03	867.03
870.22	870.22
867.63	867.63
869.36	869.36

PROJECT NO: 3671-00-71
 COUNTY: DANE & JEFFERSON
 HWY: STH 134
 PLAN AND PROFILE: STATE FARM ROAD
 SHEET 74

FILE NAME : L:\PROJECTS\12516.DWG\36710001\SHEETPLAN\050104.LPF.DWG
 PLOT DATE : 12/12/2016 12:19 PM
 PLOT BY : MOYER, TIM
 PLOT NAME :
 PLOT SCALE : 1:40.XREF
 WSDOT/CADD SHEET 44



Proposal Schedule of Items

Proposal ID: 20170110001

Project(s): 3671-00-71

SECTION: 0001 Contract Items

Alt Set ID:

Alt Mbr ID:

Proposal Line Number	Item ID Description	Approximate Quantity and Units	Unit Price	Bid Amount
0010	201.0105 Clearing	3.000 STA	_____.	_____.
0020	201.0120 Clearing	38.000 ID	_____.	_____.
0030	201.0205 Grubbing	3.000 STA	_____.	_____.
0040	201.0220 Grubbing	38.000 ID	_____.	_____.
0050	203.0100 Removing Small Pipe Culverts	4.000 EACH	_____.	_____.
0060	203.0200 Removing Old Structure (station) 01. STA 122+25	LS	LUMP SUM	_____.
0070	203.0200 Removing Old Structure (station) 02. STA 142+45	LS	LUMP SUM	_____.
0080	203.0200 Removing Old Structure (station) 03. STA 158+50	LS	LUMP SUM	_____.
0090	203.0200 Removing Old Structure (station) 04. STA 169+53	LS	LUMP SUM	_____.
0100	203.0200 Removing Old Structure (station) 05. STA 180+50	LS	LUMP SUM	_____.
0110	203.0200 Removing Old Structure (station) 06. STA 223+83	LS	LUMP SUM	_____.
0120	204.0115 Removing Asphaltic Surface Butt Joints	180.000 SY	_____.	_____.
0130	204.0120 Removing Asphaltic Surface Milling	27,725.000 SY	_____.	_____.
0140	204.0165 Removing Guardrail	104.000 LF	_____.	_____.
0150	205.0100 Excavation Common	24,065.000 CY	_____.	_____.



Proposal Schedule of Items

Proposal ID: 20170110001

Project(s): 3671-00-71

SECTION: 0001 Contract Items

Alt Set ID: Alt Mbr ID:

Proposal Line Number	Item ID Description	Approximate Quantity and Units	Unit Price	Bid Amount
0160	211.0100 Prepare Foundation for Asphaltic Paving (project) 01. 3671-00-71	LS	LUMP SUM	_____.
0170	213.0100 Finishing Roadway (project) 01. 3671-00-71	1.000 EACH	_____.	_____.
0180	214.0100 Obliterating Old Road	12.000 STA	_____.	_____.
0190	305.0110 Base Aggregate Dense 3/4-Inch	1,200.000 TON	_____.	_____.
0200	305.0120 Base Aggregate Dense 1 1/4-Inch	20,700.000 TON	_____.	_____.
0210	312.0110 Select Crushed Material	13,200.000 TON	_____.	_____.
0220	416.0160 Concrete Driveway 6-Inch	63.000 SY	_____.	_____.
0230	416.1010 Concrete Surface Drains	18.000 CY	_____.	_____.
0240	440.4410 Incentive IRI Ride	11,400.000 DOL	1.00000	11,400.00
0250	455.0605 Tack Coat	1,750.000 GAL	_____.	_____.
0260	460.2000 Incentive Density HMA Pavement	6,710.000 DOL	1.00000	6,710.00
0270	460.4110.S Reheating HMA Pavement Longitudinal Joints	30,800.000 LF	_____.	_____.
0280	460.5224 HMA Pavement 4 LT 58-28 S	10,480.000 TON	_____.	_____.
0290	465.0120 Asphaltic Surface Driveways and Field Entrances	63.000 TON	_____.	_____.
0300	520.1012 Apron Endwalls for Culvert Pipe 12-Inch	2.000 EACH	_____.	_____.
0310	520.1018 Apron Endwalls for Culvert Pipe 18-Inch	2.000 EACH	_____.	_____.



Proposal Schedule of Items

Proposal ID: 20170110001

Project(s): 3671-00-71

SECTION: 0001 Contract Items

Alt Set ID:

Alt Mbr ID:

Proposal Line Number	Item ID Description	Approximate Quantity and Units	Unit Price	Bid Amount
0320	520.3312 Culvert Pipe Class III-A 12-Inch	28.000 LF	_____.	_____.
0330	520.3318 Culvert Pipe Class III-A 18-Inch	270.000 LF	_____.	_____.
0340	521.1518 Apron Endwalls for Culvert Pipe Sloped Side Drains Steel 18-Inch 6 to 1	8.000 EACH	_____.	_____.
0350	522.0324 Culvert Pipe Reinforced Concrete Class IV 24-Inch	193.000 LF	_____.	_____.
0360	522.1024 Apron Endwalls for Culvert Pipe Reinforced Concrete 24-Inch	8.000 EACH	_____.	_____.
0370	523.0119 Culvert Pipe Reinforced Concrete Horizontal Elliptical Class HE-III 19x30-Inch	56.000 LF	_____.	_____.
0380	523.0153 Culvert Pipe Reinforced Concrete Horizontal Elliptical Class HE-III 53x83-Inch	80.000 LF	_____.	_____.
0390	523.0429 Culvert Pipe Reinforced Concrete Horizontal Elliptical Class HE-IV 29x45-Inch	42.000 LF	_____.	_____.
0400	523.0519 Apron Endwalls for Culvert Pipe Reinforced Concrete Horizontal Elliptical 19x30-Inch	2.000 EACH	_____.	_____.
0410	523.0529 Apron Endwalls for Culvert Pipe Reinforced Concrete Horizontal Elliptical 29x45-Inch	2.000 EACH	_____.	_____.
0420	523.0553 Apron Endwalls for Culvert Pipe Reinforced Concrete Horizontal Elliptical 53x83-Inch	2.000 EACH	_____.	_____.
0430	601.0557 Concrete Curb & Gutter 6-Inch Sloped 36-Inch Type D	2,719.000 LF	_____.	_____.
0440	606.0200 Riprap Medium	9.000 CY	_____.	_____.



Proposal Schedule of Items

Proposal ID: 20170110001

Project(s): 3671-00-71

SECTION: 0001 Contract Items

Alt Set ID:

Alt Mbr ID:

Proposal Line Number	Item ID Description	Approximate Quantity and Units	Unit Price	Bid Amount
0460	611.0530 Manhole Covers Type J	5.000 EACH	_____.	_____.
0470	611.0612 Inlet Covers Type C	2.000 EACH	_____.	_____.
0480	611.0627 Inlet Covers Type HM	1.000 EACH	_____.	_____.
0490	611.1004 Catch Basins 4-FT Diameter	3.000 EACH	_____.	_____.
0500	611.2004 Manholes 4-FT Diameter	1.000 EACH	_____.	_____.
0510	618.0100 Maintenance And Repair of Haul Roads (project) 01. 3671-00-71	1.000 EACH	_____.	_____.
0520	619.1000 Mobilization	1.000 EACH	_____.	_____.
0530	621.0100 Landmark Reference Monuments	15.000 EACH	_____.	_____.
0540	625.0500 Salvaged Topsoil	54,800.000 SY	_____.	_____.
0550	627.0200 Mulching	46,100.000 SY	_____.	_____.
0560	628.1104 Erosion Bales	140.000 EACH	_____.	_____.
0570	628.1504 Silt Fence	9,780.000 LF	_____.	_____.
0580	628.1520 Silt Fence Maintenance	9,780.000 LF	_____.	_____.
0590	628.1905 Mobilizations Erosion Control	2.000 EACH	_____.	_____.
0600	628.1910 Mobilizations Emergency Erosion Control	2.000 EACH	_____.	_____.
0610	628.2023 Erosion Mat Class II Type B	8,700.000 SY	_____.	_____.
0620	628.7005 Inlet Protection Type A	3.000 EACH	_____.	_____.



Proposal Schedule of Items

Proposal ID: 20170110001

Project(s): 3671-00-71

SECTION: 0001 Contract Items

Alt Set ID:

Alt Mbr ID:

Proposal Line Number	Item ID Description	Approximate Quantity and Units	Unit Price	Bid Amount
0630	628.7015 Inlet Protection Type C	3.000 EACH	_____.	_____.
0640	628.7504 Temporary Ditch Checks	630.000 LF	_____.	_____.
0650	628.7555 Culvert Pipe Checks	75.000 EACH	_____.	_____.
0660	629.0210 Fertilizer Type B	34.500 CWT	_____.	_____.
0670	630.0120 Seeding Mixture No. 20	830.000 LB	_____.	_____.
0680	633.5200 Markers Culvert End	15.000 EACH	_____.	_____.
0690	634.0614 Posts Wood 4x6-Inch X 14-FT	31.000 EACH	_____.	_____.
0700	634.0616 Posts Wood 4x6-Inch X 16-FT	15.000 EACH	_____.	_____.
0710	634.0620 Posts Wood 4x6-Inch X 20-FT	5.000 EACH	_____.	_____.
0720	637.2210 Signs Type II Reflective H	259.180 SF	_____.	_____.
0730	637.2230 Signs Type II Reflective F	114.250 SF	_____.	_____.
0740	638.2602 Removing Signs Type II	56.000 EACH	_____.	_____.
0750	638.3000 Removing Small Sign Supports	59.000 EACH	_____.	_____.
0760	642.5401 Field Office Type D	1.000 EACH	_____.	_____.
0770	643.0200.S Traffic Control Surveillance and Maintenance (project) 01. 3671-00-71	86.000 DAY	_____.	_____.
0780	643.0300 Traffic Control Drums	20,200.000 DAY	_____.	_____.
0790	643.0420 Traffic Control Barricades Type III	2,500.000 DAY	_____.	_____.



Proposal Schedule of Items

Proposal ID: 20170110001

Project(s): 3671-00-71

SECTION: 0001 Contract Items

Alt Set ID:

Alt Mbr ID:

Proposal Line Number	Item ID Description	Approximate Quantity and Units	Unit Price	Bid Amount
0800	643.0705 Traffic Control Warning Lights Type A	4,216.000 DAY	_____.	_____.
0810	643.0715 Traffic Control Warning Lights Type C	3,500.000 DAY	_____.	_____.
0820	643.0900 Traffic Control Signs	8,000.000 DAY	_____.	_____.
0830	643.0920 Traffic Control Covering Signs Type II	12.000 EACH	_____.	_____.
0840	643.1050 Traffic Control Signs PCMS	20.000 DAY	_____.	_____.
0850	643.2000 Traffic Control Detour (project) 01. 3671-00-71	1.000 EACH	_____.	_____.
0860	643.3000 Traffic Control Detour Signs	17,300.000 DAY	_____.	_____.
0870	645.0120 Geotextile Type HR	32.000 SY	_____.	_____.
0880	645.0220 Geogrid Type SR	19,362.000 SY	_____.	_____.
0890	646.0106 Pavement Marking Epoxy 4-Inch	47,752.000 LF	_____.	_____.
0900	646.0126 Pavement Marking Epoxy 8-Inch	392.000 LF	_____.	_____.
0910	647.0566 Pavement Marking Stop Line Epoxy 18-Inch	40.000 LF	_____.	_____.
0920	648.0100 Locating No-Passing Zones	2.803 MI	_____.	_____.
0930	649.0402 Temporary Pavement Marking Paint 4-Inch	1,850.000 LF	_____.	_____.
0940	650.4000 Construction Staking Storm Sewer	5.000 EACH	_____.	_____.
0950	650.4500 Construction Staking Subgrade	5,014.000 LF	_____.	_____.



Proposal Schedule of Items

Proposal ID: 20170110001

Project(s): 3671-00-71

SECTION: 0001 Contract Items

Alt Set ID:

Alt Mbr ID:

Proposal Line Number	Item ID Description	Approximate Quantity and Units	Unit Price	Bid Amount
0960	650.5000 Construction Staking Base	4,410.000 LF	_____.	_____.
0970	650.5500 Construction Staking Curb Gutter and Curb & Gutter	2,544.000 LF	_____.	_____.
0980	650.6000 Construction Staking Pipe Culverts	9.000 EACH	_____.	_____.
0990	650.8000 Construction Staking Resurfacing Reference	10,390.000 LF	_____.	_____.
1000	650.9910 Construction Staking Supplemental Control (project) 01. 3671-00-71	LS	LUMP SUM	_____.
1010	650.9920 Construction Staking Slope Stakes	5,014.000 LF	_____.	_____.
1020	690.0150 Sawing Asphalt	346.000 LF	_____.	_____.
1030	ASP.1T0A On-the-Job Training Apprentice at \$5.00/HR	700.000 HRS	5.00000	3,500.00
1040	ASP.1T0G On-the-Job Training Graduate at \$5.00/HR	400.000 HRS	5.00000	2,000.00
1050	520.1024 Apron Endwalls for Culvert Pipe 24-Inch	1.000 EACH	_____.	_____.
1060	608.3024 Storm Sewer Pipe Class III-A 24-Inch	491.000 LF	_____.	_____.
1070	611.0420 Reconstructing Manholes	2.000 EACH	_____.	_____.
Section: 0001			Total:	_____.
			Total Bid:	_____.