



Wisconsin Department of Transportation

Division of Transportation Systems Development

Bureau of Project Development
 4802 Sheboygan Avenue, Rm 601
 P O Box 7916
 Madison, WI 53707-7916

March 3, 2017

Telephone: (608) 266-1631
 Facsimile (FAX): (608) 266-8459

NOTICE TO ALL CONTRACTORS:

Proposal #03: 1650-06-73, WISC 2017 093
Lancaster – Boscobel
City Limits St to Fennimore CL
USH 61
Grant County

Letting of March 14, 2017

This is Addendum No. 01, which provides for the following:

Special Provisions:

Revised Special Provisions	
Article No.	Description
6	Utilities

Schedule of Items:

Added Bid Item Quantities					
Bid Item	Item Description	Unit	Old Quantity	Revised Quantity	Proposal Total
520.1018	Apron Endwalls for Culvert Pipe 18-Inch	EACH	0	76	76
520.1024	Apron Endwalls for Culvert Pipe 24-Inch	EACH	0	10	10
520.3318	Culvert Pipe III-A 18-Inch	LF	0	1,898	1,898
520.3324	Culvert Pipe III-A 24-Inch	LF	0	334	334

Deleted Bid Item Quantities					
Bid Item	Item Description	Unit	Old Quantity	Revised Quantity	Proposal Total
521.0118	Culvert Pipe Corrugated Steel 18-Inch	LF	1,898	-1,898	0
521.0124	Culvert Pipe Corrugated Steel 24-Inch	LF	334	-334	0
521.1018	Apron Endwalls for Culvert Pipe Steel 18-Inch	EACH	76	-76	0
521.1024	Apron Endwalls for Culvert Pipe Steel 24-Inch	EACH	10	-10	0

Plan Sheets:

Revised Plan Sheets	
02	General Notes (added abbreviation to table)
19	Intersection Detail (revised pipe note)
20	Intersection Detail (revised pipe notes)
22	Intersection Detail (revised pipe notes)
23	Intersection Detail (revised pipe notes)
24	Intersection Detail (revised pipe notes)
60	Miscellaneous Quantities (revised pipe item schedule)
94	Plan Sheet (revised pipe notes)
95	Plan Sheet (revised pipe notes)
96	Plan Sheet (revised pipe notes)
97	Plan Sheet (revised pipe notes)
98	Plan Sheet (revised pipe notes)
99	Plan Sheet (revised pipe notes)
100	Plan Sheet (revised pipe notes)
101	Plan Sheet (revised pipe notes)
102	Plan Sheet (revised pipe note)
104	Plan/Profile Sheet (revised pipe note)

The responsibility for notifying potential subcontractors and suppliers of these changes remains with the prime contractor.

Sincerely,

Mike Coleman

Proposal Development Specialist
Proposal Management Section

ADDENDUM NO. 01

1650-06-73

March 3, 2017

Special Provisions

6. Utilities.

*Replace entire section titled **Wisconsin Power & Light / Alliant Energy (Electric)** with the following:*

Wisconsin Power & Light / Alliant Energy (Electric)

Alliant Energy has both overhead electric lines and underground electric cable that begin at the project beginning on the west side of the roadway near the existing right-of-way and parallel USH 61. The facilities cross the roadway at various locations to provide local service.

The following relocations will occur prior to construction:

- Between Station 45+00'CM' and 46+88'CM', a new utility pole will be placed at Station 2104+50, 50' LT, new underground electric facilities will continue north approximately 6' inside the east right-of-way of Commercial Drive, the underground facilities will cross Commercial Drive at approximately Station 46+85'CM'.
- Station 2103+00, 50' LT, a new pole will be set;
- Station 2112+13, 42' LT, a new pole and anchor will be set;
- Station 2224+80, 62' RT, a new pole will be set;
- Between Stations 2263+35, LT and 2275+00, LT the overhead facilities will be removed and replaced outside the slope intercepts;
- Station 2275+87 an overhead crossing will be placed;
- Between Station 2276+00, RT to 2296+00, RT the overhead facilities will continue north approximately 10-feet inside the east right-of-way;
- Station 2296+40 an overhead crossing will be placed;
- Between Stations 2296+60, LT and 2314+40, LT the overhead facilities will be removed and replaced along the west right-of-way;
- Between Stations 2336+00, RT and 2341+25, RT the overhead facilities will be removed and replaced outside the proposed slope intercepts;
- Station 2429+00, LT the pole will be removed and replace north of the existing location outside the slope intercept;
- Station 2450+00, RT a pole will be added to maintain vertical clearance over USH 61;
- Between Stations 2452+70, LT and 2457+25, LT the overhead facilities will be removed and replaced outside the slope intercepts, along the west right-of-way;
- Between Stations 2468+20, LT and 2470+40, LT the overhead facilities will be removed and replaced outside the slope intercepts, along the west right-of-way. Anchors will be place on several poles;
- Between Stations 2514+75, LT and 2555+50, LT, three poles at Stations 2526+20, 2528+60, 2533+25 will remain in their existing locations. Remaining poles in this section of the overhead facilities will be removed and replaced outside the slope intercepts, along the west right-of-way;
- Between Stations 2514+75, LT and 2555+50, LT the overhead facilities will be removed and replaced outside the slope intercepts, along the west right-of-way;
- Between Stations 2563+25, RT and 2566+65, RT, new overhead facilities will be placed along the east right-of-way crossing McGhan Rd.

Wisconsin Power and Light will begin relocation work prior to construction and has an anticipated completion date of June 1, 2017.

The field contact for Wisconsin Power & Light (WP&L) - Electricity is Dennis Stephenson, 761 Enterprise Dr, Platteville, WI 53818, telephone (608) 326-9485, email dennisstephenson@alliantenergy.com.

*Replace entire section titled **Charter Communications (Communications Line)** with the following:*

Charter Communications has underground cables that begin at the project beginning on the west side of the roadway near the existing right-of-way and parallel to USH 61 to Station 2300+00 LT, including a crossing under USH 61 at Station 2296+00.

The facilities from Station 2263+00 LT to Station 2266+00 LT will be relocated to within 4 feet of the new right-of-way prior to construction.

The field contact for Charter Communications (Communication Line) is Brent Schneider, telephone (608) 209-6011, email brent.schneider@charter.com.

Schedule of Items

Attached, dated March 3, 2017, are the revised Schedule of Items Pages 1 – 14.

Plan Sheets

The following 8½ x 11-inch sheets are attached and made part of the plans for this proposal:
Revised (1007-10-86): 2, 19, 20, 22 - 24, 60, 94 - 102, and 104.

END OF ADDENDUM

STANDARD ABBREVIATIONS:

ABUT	ABUTMENT	HYD	HYDRANT
AC	ACRE	ID	INSIDE DIAMETER
AGG	AGGREGATE	INV	INVERT
ACCPCC	APRON ENDWALLS FOR CULVERT PIPE	IP	IRON PIPE ON PIN
AECPC	RETROFIT CONCRETE	LHF	LEFT-HAND FORWARD
AEP	APRON ENDWALLS FOR CULVERT PIPE	L	LENGTH OF CURVE
AECPS	APRON ENDWALLS FOR CULVERT PIPE STEEL	LF	LINEAR FOOT
AEW	APRON ENDWALL	LC	LONG CHORD OF CURVE
ASPH	ASPHALTIC	LS	LUMP SUM
AVG	AVERAGE	MH	MANHOLE
ADT	AVERAGE DAILY TRAFFIC	MO	MID POINT OF RADIUS
BF	BACK FACE	NC	NORMAL CROWN
BM	BENCH MARK	NO	NUMBER
BR	BRIDGE	OBLT	OBSTITUTE
BRG	BRIDGE	OP	OPEN
CL	CL OR C/L OR C/L	PRV	PRIVATE ENTRANCE
CONC	CONCRETE	PVC	POLYVINYL CHLORIDE
CPSC	CULVERT PIPE CORRUGATED STEEL	PVRC	POINT OF VERTICAL REVERSE CURVE
CPRC	CULVERT PIPE REINFORCED CONCRETE	QOR	QUARTER POINT OF RADIUS
CPRCE	CULVERT PIPE REINFORCED CONCRETE	R	RADIUS
CR	CREEK	RCBC	REINFORCED CONCRETE BOX CULVERT
CY	CUBIC YARD	REC'D	REQUIRED
CY	CUBIC YARD	RES	RESIDENCE OR RESIDENTIAL
C & G	CURB AND GUTTER	RHF	RIGHT-HAND FORWARD
D	DEGREE OF CURVE	R/W	RIGHT-OF-WAY
DIV	DESIGN HOUR VOLUME	R	RIVER
DC	DITCH GRADE	R/W	ROADWAY
DWY	DRIVEWAY	R/L OR R	REFERENCE LINE
E	ELEVATION	SALV	SALVAGED
EAT	ENERGY ABSORBING TERMINAL	SALV	SALVAGED
EOR	END POINT OF RADIUS	SQ	SQUARE FEET
EAT	ENERGY ABSORBING TERMINAL	SQ	SQUARE FEET
EOR	END POINT OF RADIUS	SY	SQUARE YARD
ELEV	ELEVATION	STD	STANDARD DETAIL DRAWINGS
ENT	ENTRANCE	STA	STATION
ESALS	EQUIVALENT SINGLE AXLE LOADS	STA	STATION
EXC	EXCAVATION	STS	STORM SEWER
EBS	EXCAVATION BELOW SUBGRADE	SPRC	STORM SEWER PIPE REINFORCED CONCRETE
EXST	EXISTING	SE	SUPERELEVATION RATE
FC	FACE OF CURB	TC	TOP OF CURB
FF	FACE TO FACE	T	TOWN
FERT	FERTILIZE	T OR TN	TRUCKS (PERCENT OF)
FE	FIELD ENTRANCE	T	TYPICAL
FL	FLOW LINE	VAR	VARIABLE
MCE	MARKERS CULVERT END	Y	VERTICAL CURVE
MC	MINOR	Y	VERTICAL CURVE
MCW	MINOR WEIGHT	Y	YARD
HDR	HIGH-DENSITY POLYETHYLENE	Y	YARD

DESIGN CONTACT:

SEA INC.
329 JAY STREET, SUITE 301
LA CROSSE, WI 54601
TELEPHONE: 608-496-4947
FAX: 608-496-4948
EMAIL: JTONES@SEAINC.COM

DNR AREA LIAISON:

WI DEPT OF NATURAL RESOURCES
SOUTH CENTRAL REGION HEADQUARTERS
3911 FISH HATCHERY ROAD
FITCHBURG, WI 53711
TELEPHONE: 608-272-5308
FAX: 608-272-5309
EMAIL: ANDY.BART@DNR.WISCONSIN.GOV

WISDOT CONTACT:

WISCONSIN DEPT OF TRANSPORTATION
SOUTHWEST REGION
3550 MORRISON CUDLEE ROAD
PLATTEVILLE, WI 53809
TELEPHONE: 608-789-6317
ATTENTION: TIM MAEDKE
EMAIL: TIMOTHY.MAEDKE@WISDOT.WISCONSIN.GOV

UTILITY CONTACT LIST:

ALLIANT ENERGY (WPKL) - ELECTRICITY 761 ENTERPRISE DR PLATTEVILLE, WI 53809 TELEPHONE: 608-346-3465 EMAIL: DENNIS.STEPIENSKI@ALLIANTENERGY.COM	CITY OF FENNERIE - SANITARY SEWER 860 LINCOLN AVE FENNERIE, WI 53809 TELEPHONE: 608-822-6719 EMAIL: WALTER@FENNERIE.COM	WE ENERGIES - GAS/PETROLEUM 13025 14TH AVE MORRIS, WI 53566 TELEPHONE: 608-528-5679 EMAIL: BOB.MARR@WE-ENERGIES.COM
CHARTER COMMUNICATIONS 2701 DANIELS ST MADISON, WI 53718 ATTENTION: STEVE HEGGE TELEPHONE: 608-576-2813 EMAIL: STEVE.HEGGE@CHARTER.COM	CITY OF FENNERIE - WATER 860 LINCOLN AVE FENNERIE, WI 53809 ATTENTION: DENNIS BIDDECK TELEPHONE: 608-822-6501 EMAIL: DENNIS@FENNERIE.COM	WISCONSIN INDEPENDENT NETWORK 3943 CEDAR CREEK RD SLINGER, WI 53086 ATTENTION: DICK HAMMETTER TELEPHONE: 715-838-4406 EMAIL: DICKHAMMETTER@INW.NET
CITY OF LANCASTER - WATER & SEWER 206 S MADISON ST LANCASTER, WI 53883 TELEPHONE: 608-732-7543 EMAIL: BOB@LANCASTERWISCONSIN.COM	FARMERS TELEPHONE COMPANY/GRANTLAND TELECOM LLC 4001 TELLAND RD, SUITE 108 MADISON, WI 53718 ATTENTION: SHERA HURDY TELEPHONE: 608-732-4339 EMAIL: SHERA@FARMTEL.COM	NORTHERN NATURAL GAS COMPANY - GAS 5557 COUNTY RD D PLATTEVILLE, WI 53818 ATTENTION: LEONARD KLAAS TELEPHONE: 402-530-2806 EMAIL: LEONARD.KLAAS@NNG.COM

PROJECT NO: 1650-06-73

HWY: USH 61

COUNTY: GRANT

GENERAL NOTES

PLT BY : SEH INC LAYOUT NAME : 020101GN

PLOT SCALE : NTS

SHEET 2

E WSDOT/CADD SHEET 42

GENERAL NOTES:

- NO TREES OR SHRUBS SHALL BE REMOVED WITHOUT APPROVAL OF THE ENGINEER.
- THE LOCATIONS OF EXISTING AND PROPOSED UTILITY INSTALLATIONS AS SHOWN ON THE PLANS ARE APPROXIMATE. THERE MAY BE OTHER UTILITY INSTALLATIONS WITHIN THE PROJECT AREA THAT ARE NOT SHOWN.
- THE CONTRACTOR SHALL NOTIFY DIGGERS HOTLINE AND AFFECTED UTILITIES PRIOR TO THE START OF WORK. ANY LOCAL MUNICIPAL UTILITY WHICH IS NOT A MEMBER OF THE DIGGERS HOTLINE MUST BE CONTACTED SEPARATELY.
- WHEN THE QUANTITY OF HMA PAVEMENT OR BASE AGGREGATE IS MEASURED FOR PAYMENT BY THE TON, THE DEPTH OR THICKNESS OF THE LAYER SHOWN ON THE PLAN IS APPROXIMATE AND THE ACTUAL THICKNESS WILL DEPEND ON THE DISTRIBUTION OF THE MATERIAL AS DIRECTED BY THE ENGINEER.
- PRIOR TO ORDERING DRAINAGE PIPES AND STRUCTURES, THE CONTRACTOR SHALL VERIFY RELATED DRAINAGE INFORMATION IN THE PLANS WITH THE ENGINEER.
- CONCRETE COLLAR REQUIRED AT JOINTS BETWEEN EXISTING AND NEW CULVERT PIPE.
- INLET AND DISCHARGE ELEVATIONS FOR DRAINAGE STRUCTURES SHOWN ON THE PLAN MAY BE ADJUSTED BY THE ENGINEER TO FIT FIELD CONDITIONS.
- WETLANDS, WATERWAYS, ARCHAEOLOGICAL SITES AND OTHER ENVIRONMENTALLY SENSITIVE AREAS SHALL BE PROTECTED AT ALL TIMES. DO NOT STORE EQUIPMENT OR MATERIALS NEAR THESE SITES UNLESS APPROVED BY THE ENGINEER.
- BROKEN CONCRETE CONTAINING RE-BAR SHALL NOT BE USED AS RIPRAP.
- CROSS SECTIONS SHOWN INCLUDE THE THICKNESS OF TOPSOIL WHERE REQUIRED. TOPSOIL SHALL BE REPLACED WITH 4-INCH TYPICAL DEPTH.
- TRAFFIC CONTROL DEVICES SHALL BE ADJUSTED TO FIT FIELD CONDITIONS AS DIRECTED BY THE ENGINEER.
- REMOVAL OF EROSION CONTROL DEVICES IS INCLUDED IN THE COST OF THEIR RESPECTIVE BID ITEMS.
- THE EROSION CONTROL FEATURES AS SHOWN IN THE PLANS ARE AT SUGGESTED LOCATIONS. EXACT LOCATIONS WILL BE DETERMINED BY THE ENGINEER IN THE FIELD.
- ASPHALTIC AND CONCRETE SURFACES SHALL BE SAWCUT AT THE MATCH LINE AS SHOWN ON THE PLAN OR AS DIRECTED BY THE ENGINEER.
- DISTURBED AREAS WITHIN THE RIGHT OF WAY, EXCEPT THE AREAS WITHIN THE FINISHED SHOULDER POINTS, SHALL BE TOPSOILED, FERTILIZED AND SEEDER.
- FERTILIZER SHALL NOT BE USED NEAR NAVIGABLE WATERWAYS OR WETLANDS.
- STATIONING, DISTANCES AND OFFSETS FOR SIGNS SHOWN ON THE PLANS ARE APPROXIMATE AND THE LOCATIONS OF SIGNS ARE TO BE DETERMINED IN THE FIELD BY THE ENGINEER.
- A CONVERSION FACTOR OF 2.0 TONS/CY IS USED TO ESTIMATE QUANTITIES FOR BASE AGGREGATE DENSE, 3/4-INCH.
- A CONVERSION FACTOR OF 2.0 TONS/CY IS USED TO ESTIMATE QUANTITIES FOR BASE AGGREGATE DENSE, 1 1/4-INCH.
- A CONVERSION FACTOR OF 1.9 TONS/CY IS USED TO ESTIMATE QUANTITIES FOR SELECT CRUSHED MATERIAL.
- A CONVERSION FACTOR OF 112 LBS/ANV/SY IS USED TO ESTIMATE QUANTITIES FOR HMA PAVEMENT.
- THE CONTRACTOR'S PAVING OPERATIONS SHALL BE CONSISTENT WITH THE PLAN TYPICAL SECTIONS AND CONSTRUCTED TO PREVENT HMA LONGITUDINAL JOINTS FROM BEING LOCATED WITHIN A DRIVING, TURNING, OR PARKING LANE.
- ALL TYPES OF ASPHALTIC PAVEMENT SHALL BE CONSTRUCTED WITH THE FOLLOWING LAYERS AND GRADATIONS:

ORDER OF SHEETS - SECTION 2:

TOTAL PAVEMENT DEPTH (INCH)	LAYER DEPTH (INCH)	HMA PAVEMENT ITEM
5.0	UPPER: 2.0	4 MT 58-28 S
3.0	LOWER: 3.0	3 MT 58-28 S
		SINGLE LAYER
		4 MT 58-28 S



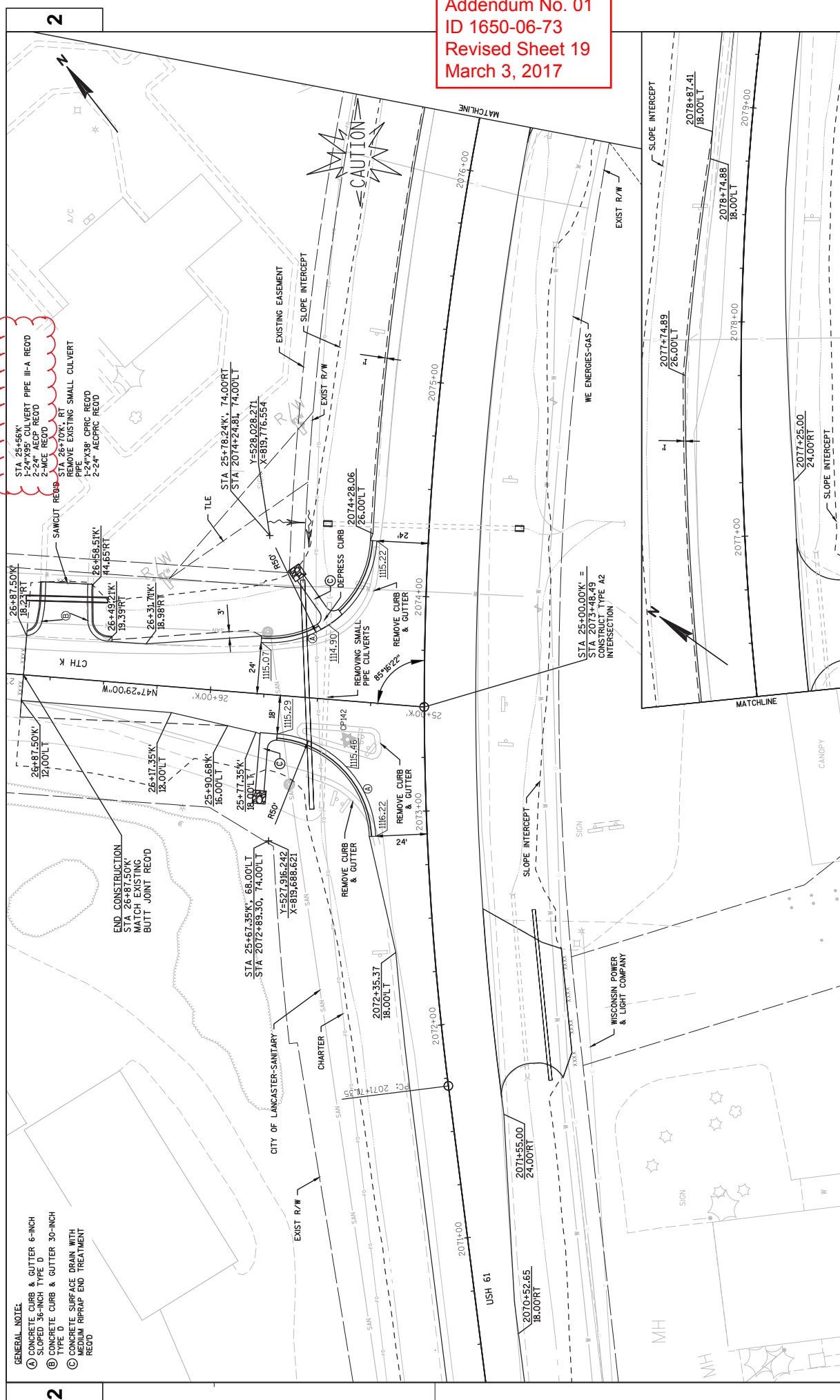
TO OBTAIN LOCATION OF PARTICIPANTS' UNDERGROUND FACILITIES BEFORE YOU DIG IN WISCONSIN

NOTE: WIS. STATUTE 182.0175 (1974) REQUIRES MIN. OF 3 WORK DAYS NOTICE BEFORE YOU EXCAVATE.

Addendum No. 01
ID 1650-06-73
Revised Sheet 2
March 3, 2017

APRON ENDWALLS FOR CULVERT PIPE
RETROFIT CONCRETE
APRON ENDWALLS FOR CULVERT PIPE STEEL

Addendum No. 01
 ID 1650-06-73
 Revised Sheet 19
 March 3, 2017



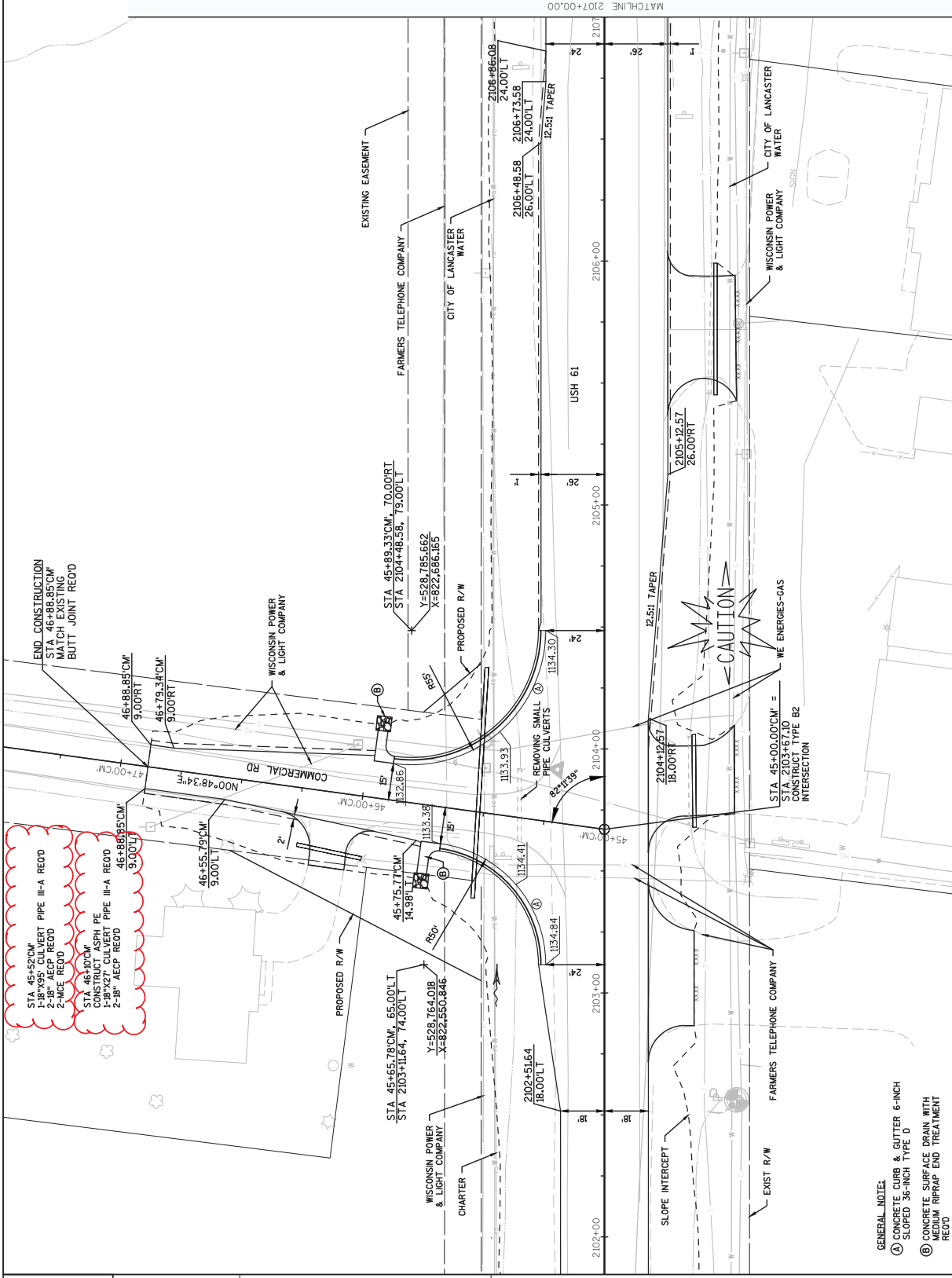
2

2

PROJECT NO: 1650-06-73	HWY: USH 61	COUNTY: GRANT	INTERSECTION DETAIL - CTH K	SHEET 19	E
FILE NAME : P:\NLS\WNTS\N11740\CIVIL_30\16500603\SHEETS\PLAN\021101.DWG			PLOT DATE : 2/27/2017 2:51 PM		
PLOT BY : *****			PLOT NAME : PLOT SCALE : 1:40.XREF		

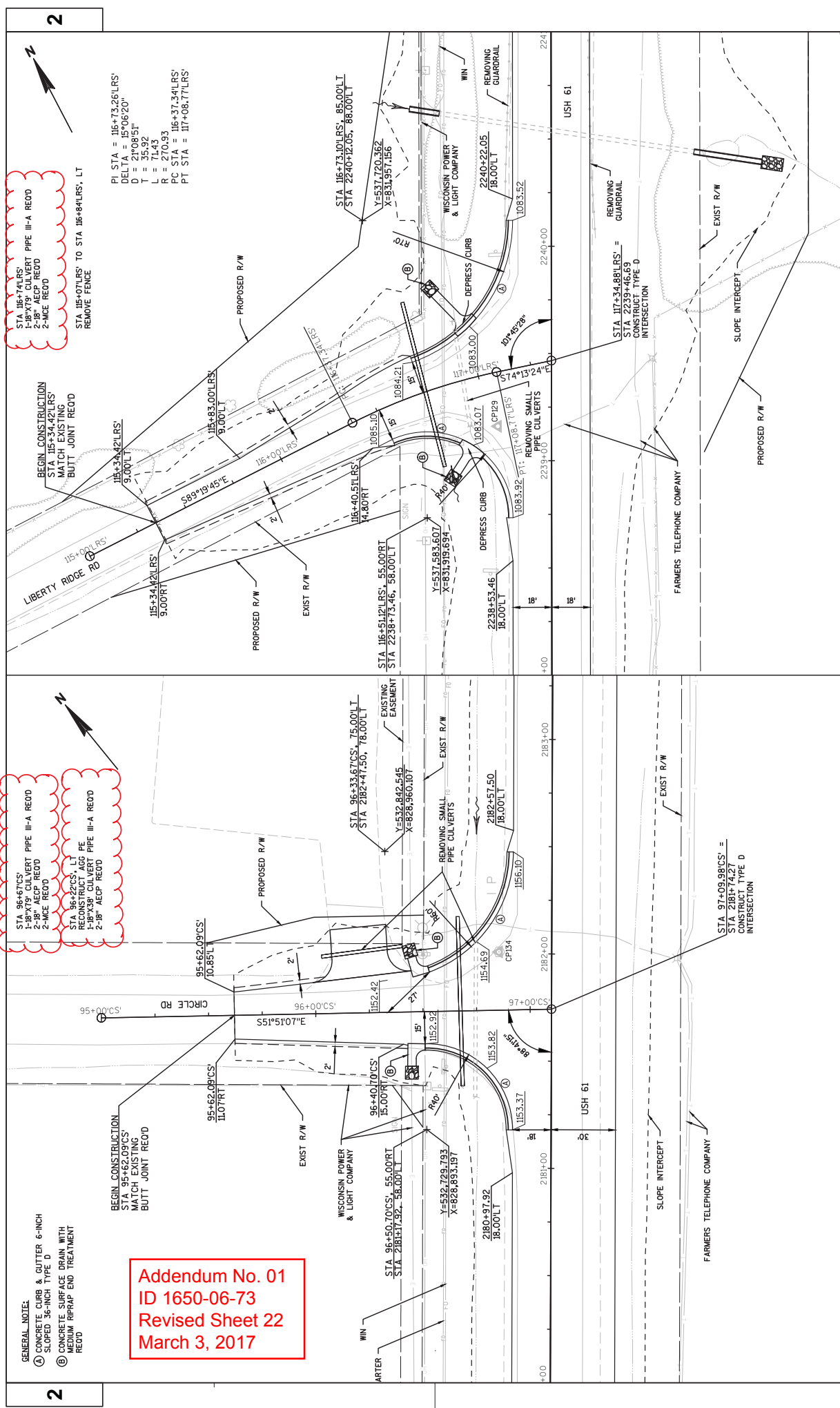


Addendum No. 01
 ID 1650-06-73
 Revised Sheet 20
 March 3, 2017



STA 45+52.00' CM
 1-18" X 95' CULVERT PIPE III-A RECD
 2-INCE RECD
 STA 46+00.00' CM
 1-18" X 27' CULVERT PIPE III-A RECD
 2-18" ACP RECD
 STA 45+65.78' CM
 1-18" X 95' CULVERT PIPE III-A RECD
 2-INCE RECD
 STA 46+88.85' CM
 1-18" X 27' CULVERT PIPE III-A RECD
 2-18" ACP RECD

GENERAL NOTE:
 (A) CONCRETE CURB & GUTTER 6-INCH
 SLOPED 36-INCH TYPE D
 (B) CONCRETE SURFACE DRAIN WITH
 MEDIUM RIPRAP END TREATMENT
 RECD



STA 116+74.1RS' -
1-18" ACP CULVERT PIPE III-A REOD
2-18" ACP REOD
2-18" ACP REOD

STA 115+07.1RS' TO STA 116+84.1RS', LT
REMOVE FENCE

PI STA = 116+73.26 LRS'
DELTA = 150°06'20"
D = 240'08.51"
T = 35.92'
L = 71.43'
R = 270.93'
PC STA = 116+37.34 LRS'
PT STA = 117+08.77 LRS'

STA 96+67CS' -
1-18" ACP CULVERT PIPE III-A REOD
2-18" ACP REOD
2-18" ACP REOD

STA 96+22CS' -
1-18" ACP CULVERT PIPE III-A REOD
2-18" ACP REOD

Addendum No. 01
ID 1650-06-73
Revised Sheet 22
March 3, 2017

GENERAL NOTE:
 (A) CONCRETE CURB & GUTTER 6-INCH
 SLOPED 36-INCH TYPE D
 (B) CONCRETE SURFACE DRAIN WITH
 18" R/W R/RAP END TREATMENT
 REOD

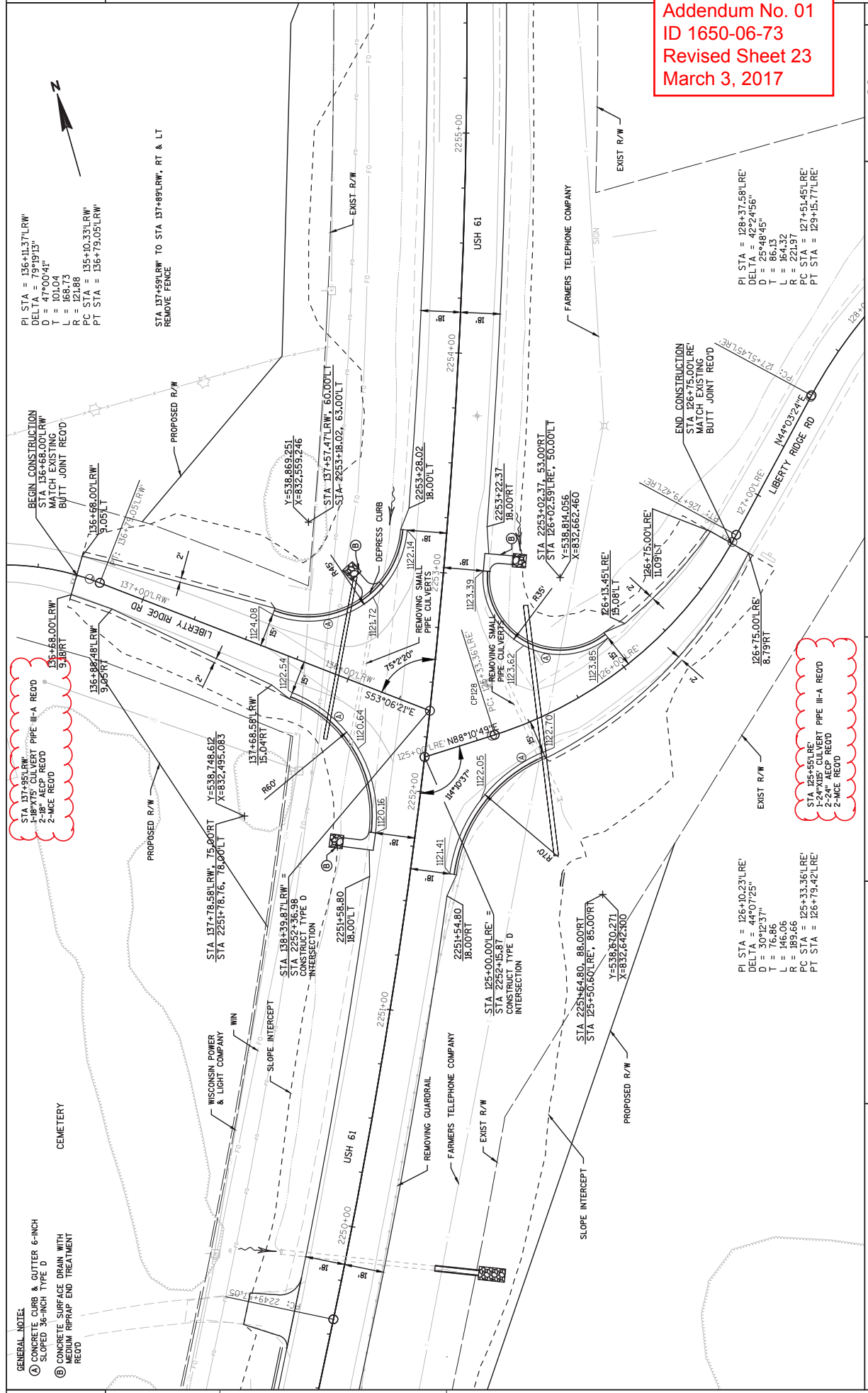
PROJECT NO: 1650-06-73	COUNTY: GRANT	INTERSECTION DETAIL - CIRCLE RD, LIBERTY RIDGE RD - SOUTH	SHEET 22	E
HWY: USH 61				
FILE NAME : P:\NDR\WRTS\SW\117740\CIVIL_30\16500603\SHEETS\PLAN\021101.DWG PLOT DATE : 2/27/2017 2:49 PM PLOT BY : ***** PLOT NAME : PLOT SCALE : 1:140.XREF WSDOT/CADD SHEET 42				

GENERAL NOTE:
 (A) CONCRETE CURB & GUTTER 6-INCH SLOPED 3/6-INCH TYPE D
 (B) CONCRETE SURFACE DRAIN WITH MEDIUM RIPRAP END TREATMENT REOD

STA 137+95.17' RW
 1-18"x75" CULVERT PIPE III-A REOD
 2-18" AECP REOD
 2-MCE REOD

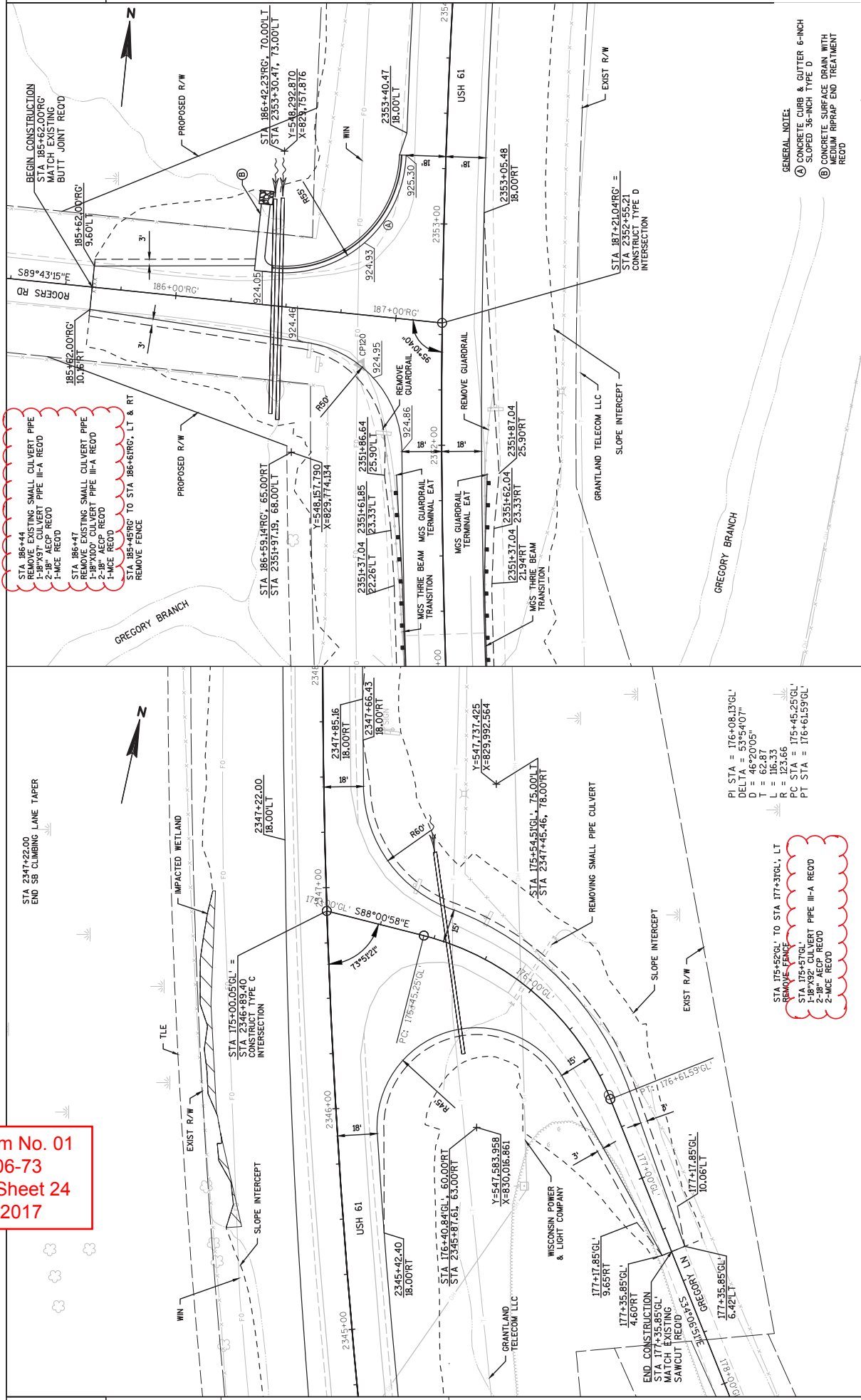
PI STA = 136+11.37' LRW
 DELTA = 79°19'13"
 D = 47°00'41"
 T = 101.04
 L = 168.73
 R = 121.88
 PC STA = 135+10.33' LRW
 PT STA = 136+79.05' LRW

STA 137+59.17' RW TO STA 137+89.17' RW, RT & LT REMOVE FENCE



Addendum No. 01
 ID 1650-06-73
 Revised Sheet 23
 March 3, 2017

Addendum No. 01
 ID 1650-06-73
 Revised Sheet 24
 March 3, 2017



STA 186+44
 REMOVE EXISTING SMALL CULVERT PIPE
 1-18" ACP REOD
 2-18" ACP REOD
 1-MCE REOD

STA 186+47
 REMOVE EXISTING SMALL CULVERT PIPE
 1-18"X10" CULVERT PIPE III-A REOD
 2-18" ACP REOD
 1-MCE REOD

STA 185+62 TO STA 186+61RG, LT & RT
 REMOVE FENCE

STA 175+52GL TO STA 177+31GL, LT
 REMOVE FENCE
 STA 175+57GL
 1-18"X32" CULVERT PIPE III-A REOD
 2-18" ACP REOD
 2-MCE REOD

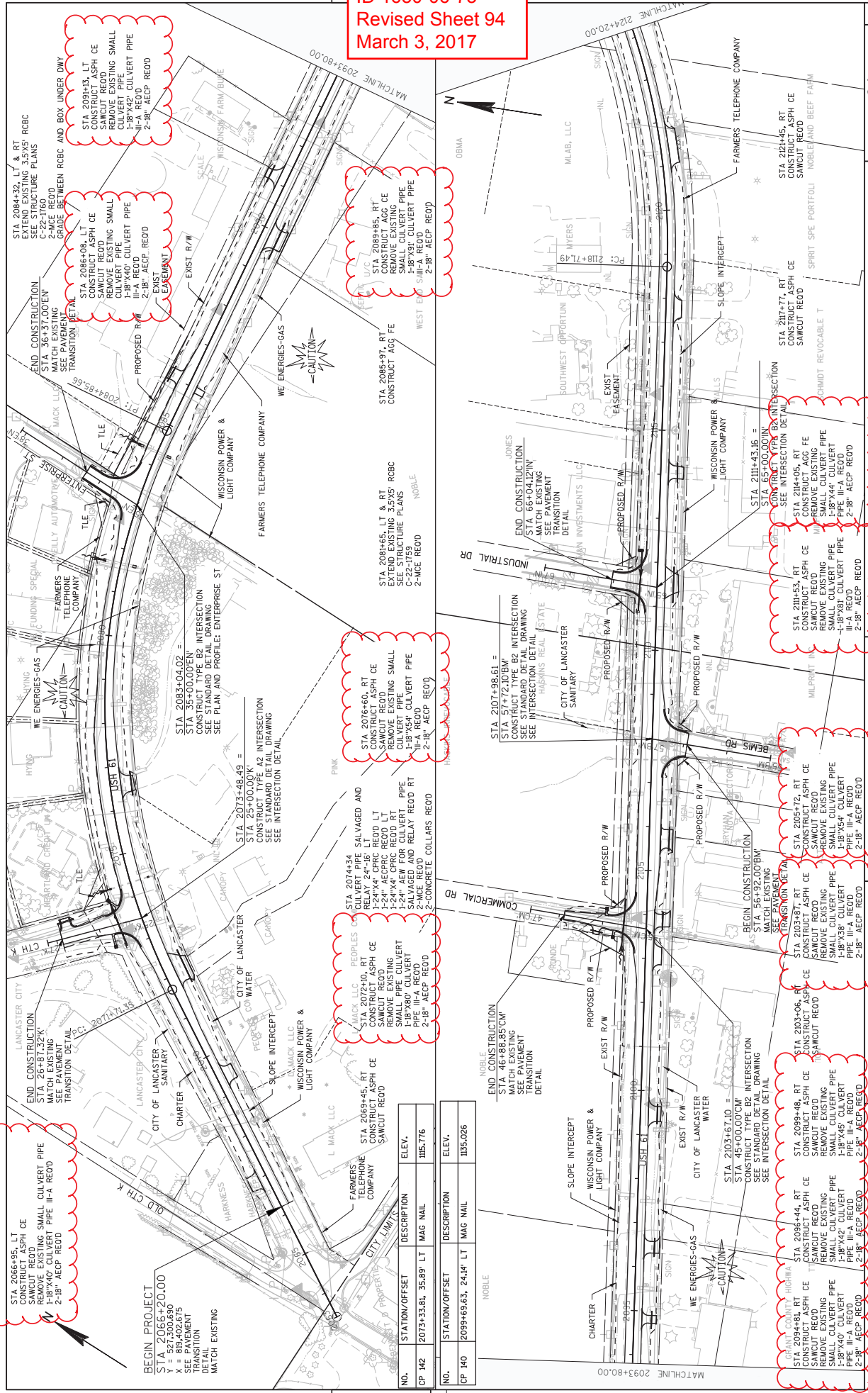
PI STA = 176+08.13GL
 DELTA = 53°54'01"
 D = 46°20'05"
 T = 62.87
 L = 116.33
 R = 123.66
 PC STA = 175+45.25GL
 PT STA = 176+61.59GL

GENERAL NOTE:
 (A) CONCRETE CURB & GUTTER 6-INCH
 SLOPED 36-INCH TYPE D
 (B) CONCRETE SURFACE DRAIN WITH
 MEDIUM RPPRAP END TREATMENT
 REOD

2

2

Addendum No. 01
ID 1650-06-73
Revised Sheet 94
March 3, 2017



STA 2066+95. LT
 CONSTRUCT ASPH CE
 REMOVE EXISTING SMALL CULVERT PIPE
 PIPE III-A RECD
 2-18" AACP RECD

STA 2084+29. LT & RT
 EXTEND EXISTING 3.5X5' RBCB
 SEE STRUCTURE PLANS
 C-22-1760
 MATCH EXISTING
 SEE PAVEMENT
 TRANSITION DETAIL

STA 2086+08. LT
 CONSTRUCT ASPH CE
 REMOVE EXISTING SMALL
 CULVERT PIPE
 PIPE III-A RECD
 2-18" AACP RECD

STA 2089+85. RT
 CONSTRUCT AGG FE
 REMOVE EXISTING
 CULVERT PIPE
 PIPE III-A RECD
 2-18" AACP RECD

BEGIN PROJECT
 STA 2066+20.00
 Y = 527,300.690
 X = 819,402.675
 SEE PAVEMENT
 TRANSITION
 DETAIL
 MATCH EXISTING

STA 2073+33.81, 35.89' LT
 CONSTRUCT ASPH CE
 REMOVE EXISTING SMALL
 CULVERT PIPE
 PIPE III-A RECD
 2-18" AACP RECD

STA 2074+34
 CULVERT PIPE SALVAGED AND
 1-24"X4" CPVC RECD LT
 1-24"X4" CPVC RECD RT
 1-18"X54" CULVERT PIPE
 SALVAGED AND RELAY RECD RT
 2-MCE RECD
 2-CONCRETE COLLARS RECD

STA 2072+10. RT
 CONSTRUCT ASPH CE
 REMOVE EXISTING
 SMALL PIPE CULVERT
 PIPE III-A RECD
 2-18" AACP RECD

STA 2069+45. RT
 CONSTRUCT ASPH CE
 SAWCUT RECD

STA 2076+60. RT
 CONSTRUCT ASPH CE
 SAWCUT RECD
 REMOVE EXISTING SMALL
 CULVERT PIPE
 PIPE III-A RECD
 2-18" AACP RECD

STA 2088+65. LT & RT
 EXTEND EXISTING 3.5X5' RBCB
 SEE STRUCTURE PLANS
 C-22-1759
 2-MCE RECD

STA 2089+97. RT
 CONSTRUCT AGG FE
 REMOVE EXISTING
 CULVERT PIPE
 PIPE III-A RECD
 2-18" AACP RECD

NO.	STATION/OFFSET	DESCRIPTION	ELEV.
CP H2	2073+33.81, 35.89' LT	MAG NAIL	1185.776
NO.		DESCRIPTION	ELEV.
CP H0	2099+69.63, 24.4' LT	MAG NAIL	1185.026

5

STA 2054+72. RT
 CONSTRUCT ASPH CE
 SAWCUT RECD
 REMOVE EXISTING
 SMALL CULVERT PIPE
 PIPE III-A RECD
 2-18" AACP RECD

STA 2054+72. RT
 CONSTRUCT ASPH CE
 SAWCUT RECD
 REMOVE EXISTING
 SMALL CULVERT PIPE
 PIPE III-A RECD
 2-18" AACP RECD

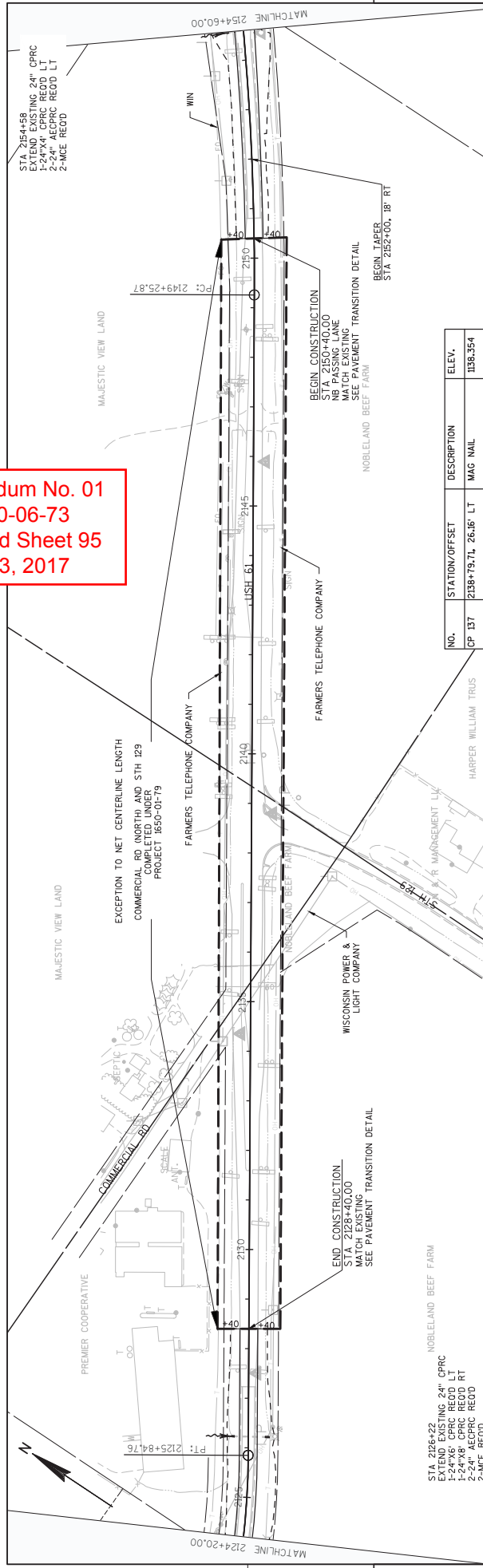
STA 2054+72. RT
 CONSTRUCT ASPH CE
 SAWCUT RECD
 REMOVE EXISTING
 SMALL CULVERT PIPE
 PIPE III-A RECD
 2-18" AACP RECD

STA 2054+72. RT
 CONSTRUCT ASPH CE
 SAWCUT RECD
 REMOVE EXISTING
 SMALL CULVERT PIPE
 PIPE III-A RECD
 2-18" AACP RECD

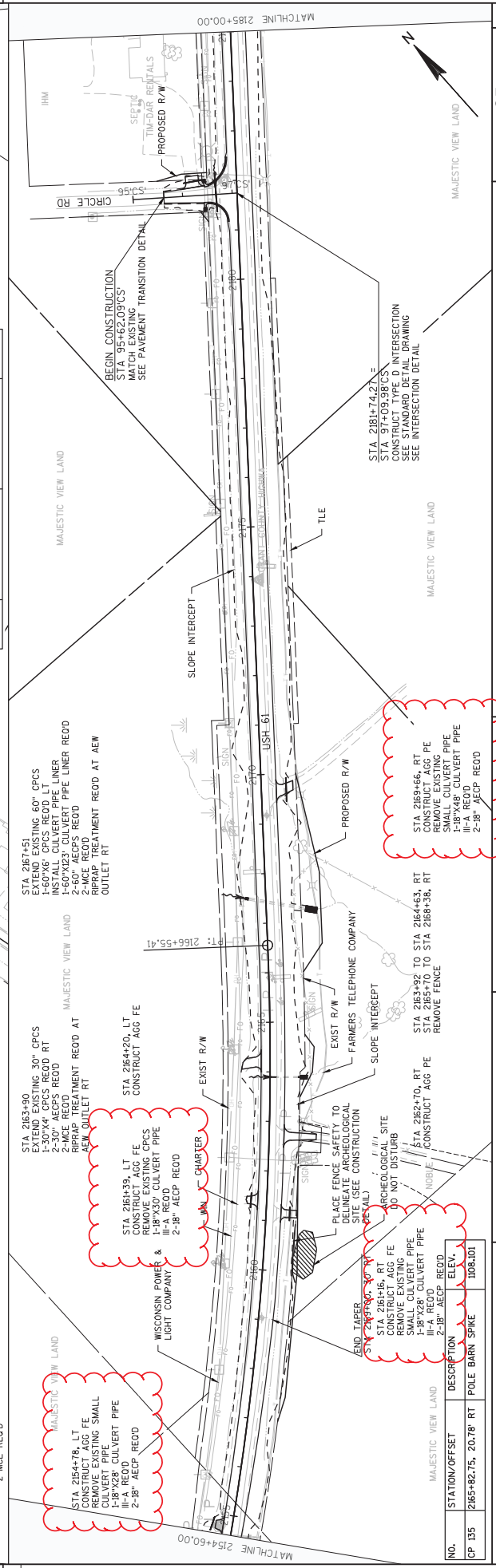
STA 2054+72. RT
 CONSTRUCT ASPH CE
 SAWCUT RECD
 REMOVE EXISTING
 SMALL CULVERT PIPE
 PIPE III-A RECD
 2-18" AACP RECD

STA 2054+72. RT
 CONSTRUCT ASPH CE
 SAWCUT RECD
 REMOVE EXISTING
 SMALL CULVERT PIPE
 PIPE III-A RECD
 2-18" AACP RECD

Addendum No. 01
 ID 1650-06-73
 Revised Sheet 95
 March 3, 2017

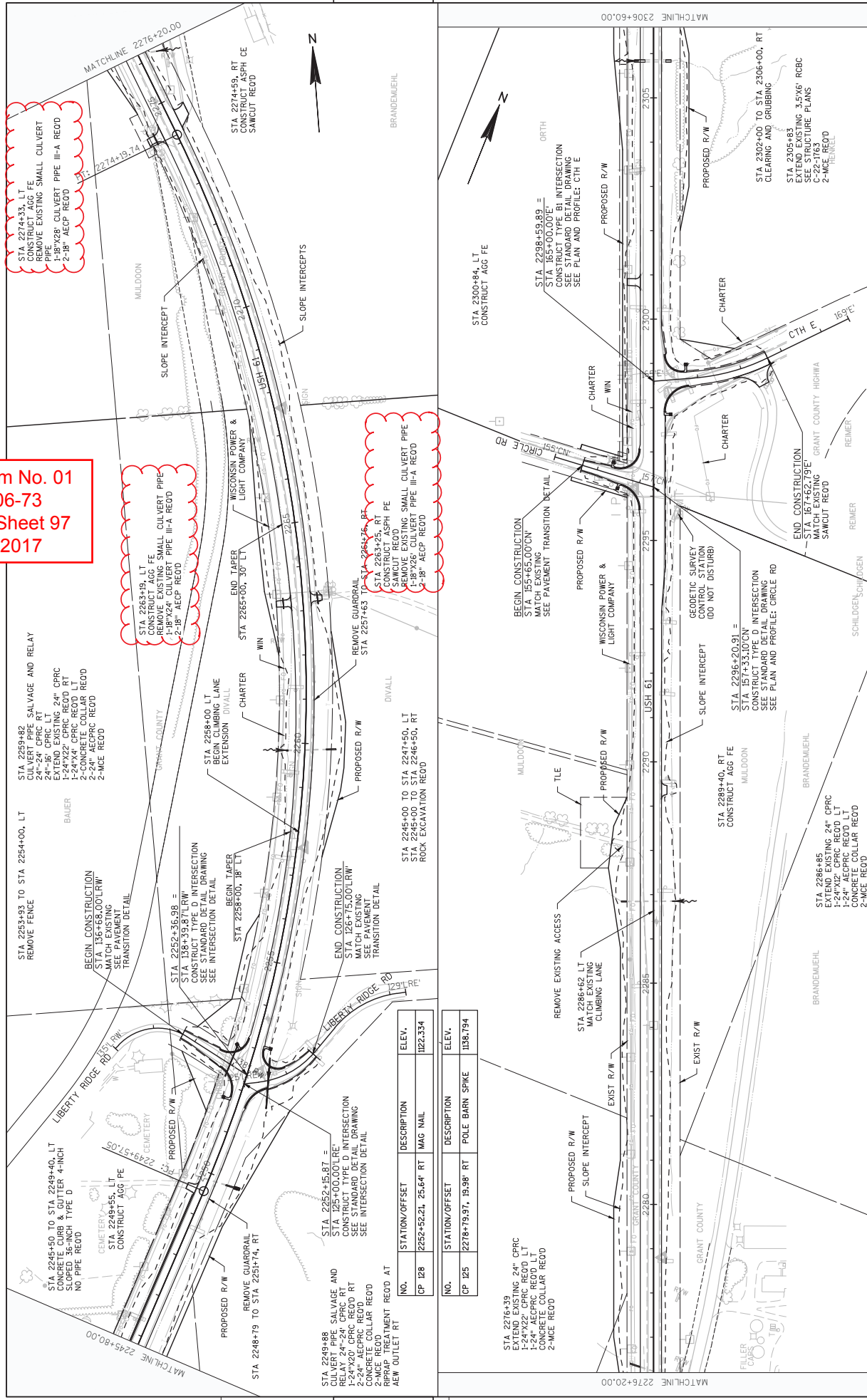


NO.	STATION/OFFSET	DESCRIPTION	ELEV.
CP 137	2138+78.71, 26'-16\"/>		



NO.	STATION/OFFSET	DESCRIPTION	ELEV.
CP 95	2165+82.75, 20'-78\"/>		

Addendum No. 01
ID 1650-06-73
Revised Sheet 97
March 3, 2017



STA 2274+33, LT
 CONSTRUCT AGG FE
 REMOVE EXISTING SMALL CULVERT
 PIPE
 1-18"x28" CULVERT PIPE III-A REOD
 2-18" AECPRC REOD

STA 2263+49, LT
 CONSTRUCT AGG FE
 REMOVE EXISTING SMALL CULVERT PIPE
 1-18"x24" CULVERT PIPE III-A REOD
 2-18" AECPRC REOD

STA 2264+76, RT
 CONSTRUCT ASPH P
 SAMCUT REOD
 REMOVE EXISTING SMALL CULVERT PIPE
 1-18"x28" CULVERT PIPE III-A REOD
 2-18" AECPRC REOD

STA 2259+82
 CULVERT PIPE SALVAGE AND RELAY
 24"x36" CPRC LT
 EXTEND EXISTING 24" CPRC
 1-24"x22" CPRC REOD RT
 2-24"x22" CPRC REOD LT
 2-24" AECPRC REOD
 2-24" AECPRC REOD
 2-MCE REOD

STA 2258+00, LT
 BEGIN CLIMBING LANE
 EXTENSION DIVALL
 CHARTER
 STA 2258+00, 18' LT
 BEGIN TAPER
 STA 2252+36.98 =
 STA 158+328.71RW =
 CONSTRUCT TYPE D INTERSECTION
 SEE STANDARD DETAIL DRAWING
 SEE INTERSECTION DETAIL

STA 2248+79 TO STA 2251+74, RT
 REMOVE GUARDRAIL
 STA 2248+79 TO STA 2251+74, RT
 REMOVE GUARDRAIL
 STA 2248+79 TO STA 2251+74, RT
 REMOVE GUARDRAIL

STA 2246+00 TO STA 2247+50, LT
 STA 2246+00 TO STA 2246+50, RT
 ROCK EXCAVATION REOD

STA 2276+19
 EXTEND EXISTING 24" CPRC
 1-24"x22" CPRC REOD LT
 1-24" AECPRC REOD LT
 CONCRETE COLLAR REOD
 2-MCE REOD

STA 2286+62 LT
 MATCH EXISTING
 CLIMBING LANE
 STA 2286+62 LT
 MATCH EXISTING
 CLIMBING LANE

STA 2298+20.91 =
 STA 158+328.71RW =
 CONSTRUCT TYPE D INTERSECTION
 SEE STANDARD DETAIL DRAWING
 SEE INTERSECTION DETAIL

STA 2286+40, RT
 CONSTRUCT AGG FE
 STA 2286+40, RT
 CONSTRUCT AGG FE

STA 2286+85
 EXTEND EXISTING 24" CPRC
 1-24"x22" CPRC REOD LT
 1-24" AECPRC REOD LT
 CONCRETE COLLAR REOD
 2-MCE REOD

STA 2245+60 TO STA 2249+40, LT
 CONCRETE CURB CUTTER 4-INCH
 SLOPED 36-INCH TYPE D
 NO PIPE REOD

STA 2249+55, LT
 CONSTRUCT AGG FE
 STA 2249+55, LT
 CONSTRUCT AGG FE

STA 2252+15.87 =
 STA 158+328.71RW =
 CONSTRUCT TYPE D INTERSECTION
 SEE STANDARD DETAIL DRAWING
 SEE INTERSECTION DETAIL

STA 2252+15.87 =
 STA 158+328.71RW =
 CONSTRUCT TYPE D INTERSECTION
 SEE STANDARD DETAIL DRAWING
 SEE INTERSECTION DETAIL

STA 2286+62 LT
 MATCH EXISTING
 CLIMBING LANE
 STA 2286+62 LT
 MATCH EXISTING
 CLIMBING LANE

STA 2288+40, RT
 CONSTRUCT AGG FE
 STA 2288+40, RT
 CONSTRUCT AGG FE

STA 2298+20.91 =
 STA 158+328.71RW =
 CONSTRUCT TYPE D INTERSECTION
 SEE STANDARD DETAIL DRAWING
 SEE INTERSECTION DETAIL

STA 2286+85
 EXTEND EXISTING 24" CPRC
 1-24"x22" CPRC REOD LT
 1-24" AECPRC REOD LT
 CONCRETE COLLAR REOD
 2-MCE REOD

NO.	STATION/OFFSET	DESCRIPTION	ELEV.
CP 128	2252+52.21, 25.64' RT	MAG NAIL	1122.334

NO.	STATION/OFFSET	DESCRIPTION	ELEV.
CP 125	2278+79.97, 19.98' RT	POLE BARN SPIKE	1198.794

PROJECT NO: 1650-06-73

HWY: USH 61

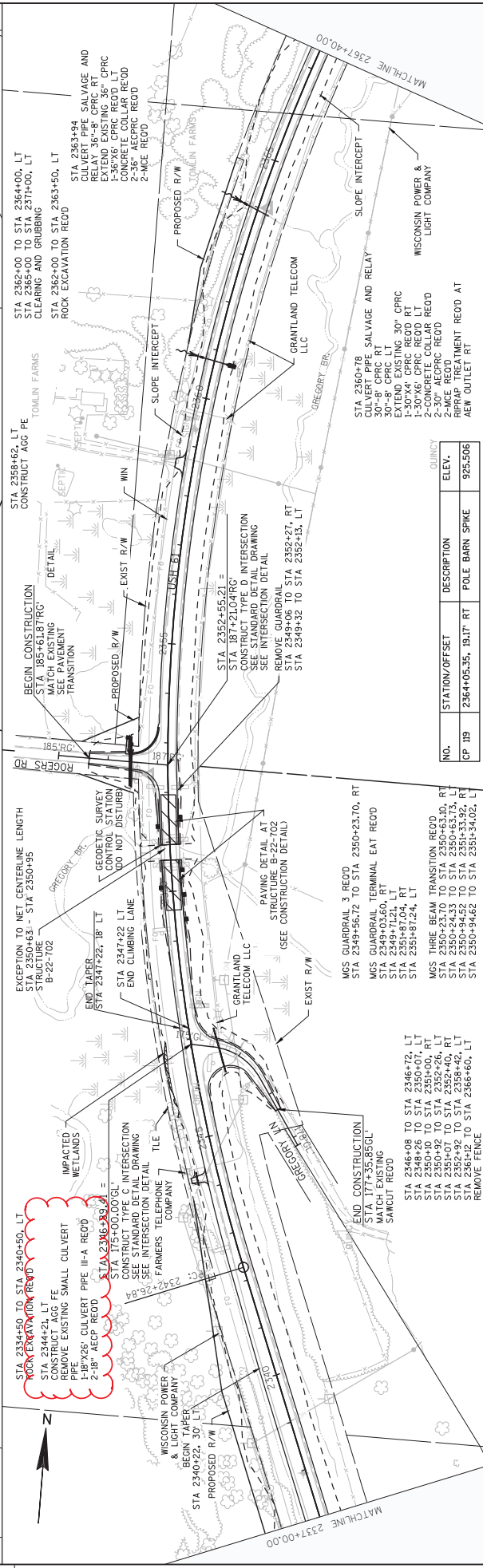
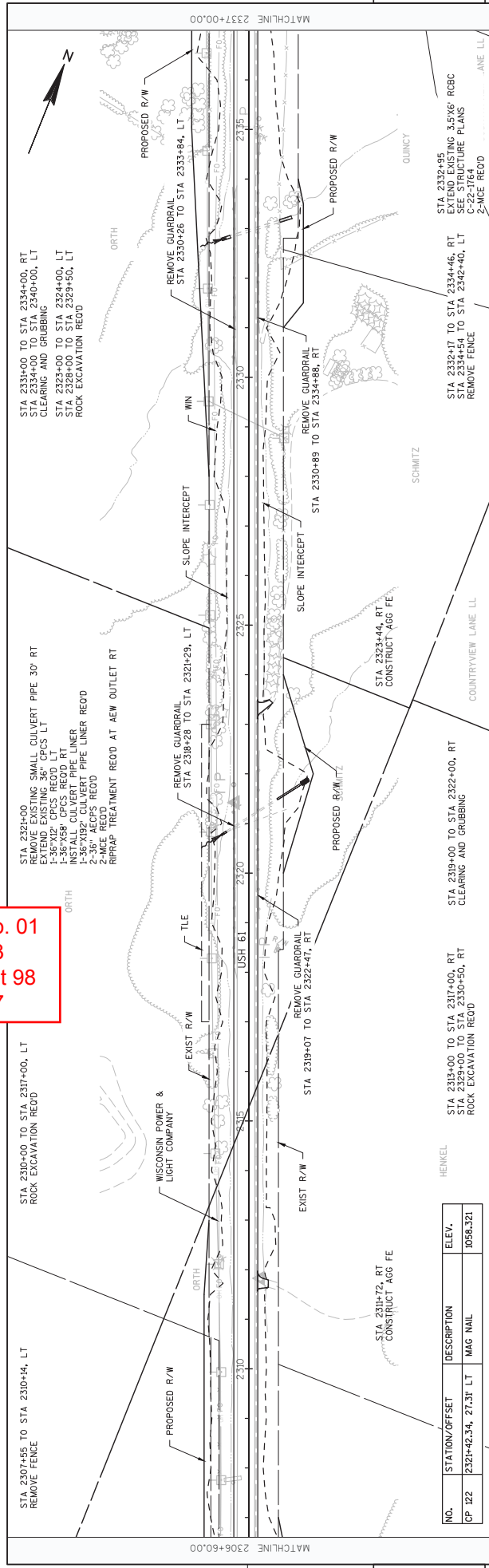
COUNTY: CRANT

PLAN: USH 61

SHEET 97

E

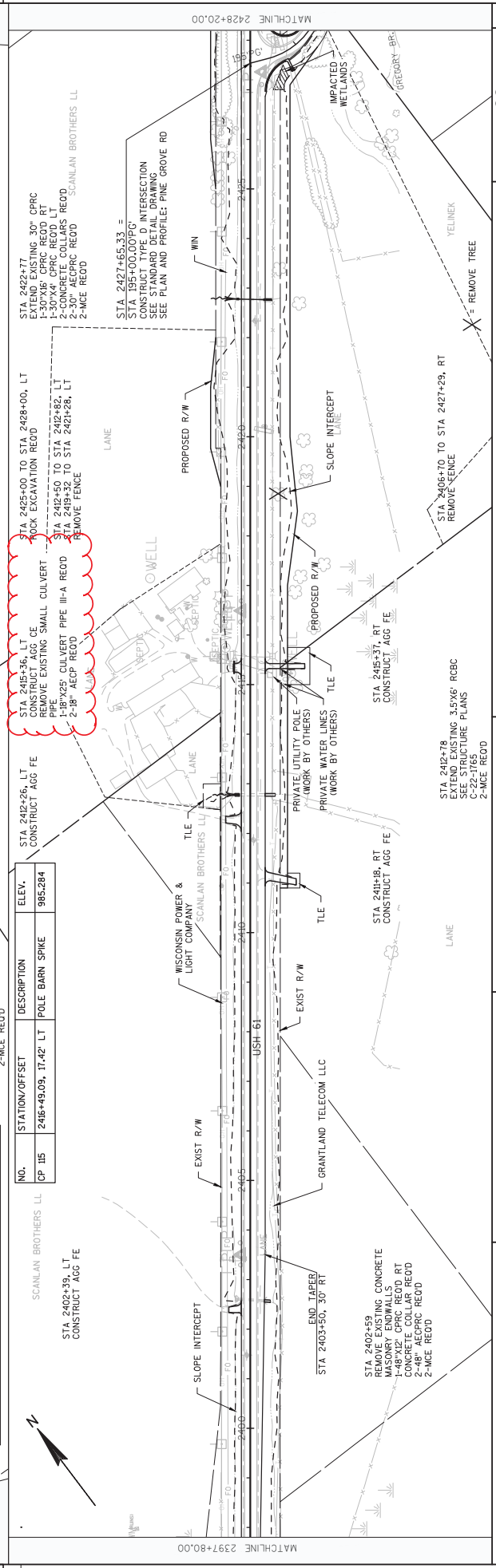
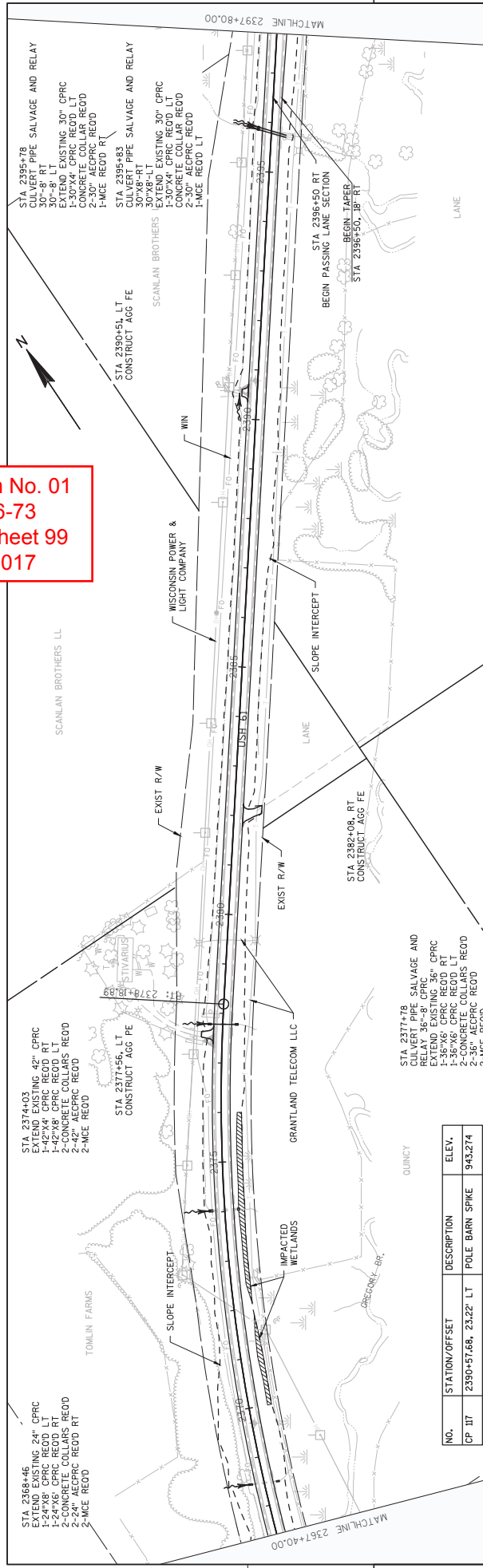
Addendum No. 01
ID 1650-06-73
Revised Sheet 98
March 3, 2017



5

5

Addendum No. 01
ID 1650-06-73
Revised Sheet 99
March 3, 2017



NO.	STATION/OFFSET	DESCRIPTION	ELEV.
CP 105	2405+49.09, 17.42' LT	POLE BARN SPIKE	985.284
CP 117	2390+57.68, 23.22' LT	POLE BARN SPIKE	943.274

NO.	STATION/OFFSET	DESCRIPTION	ELEV.
CP 115	2405+49.09, 17.42' LT	POLE BARN SPIKE	985.284
CP 117	2390+57.68, 23.22' LT	POLE BARN SPIKE	943.274

PROJECT NO: 1650-06-73

HWY: USH 61

COUNTY: GRANT

PLAN: USH 61

SHEET 99

FILE NAME : P:\NLS\WITS\11749\CIVIL_3D\16500603\99E\PLAN\99201.PN.DWG

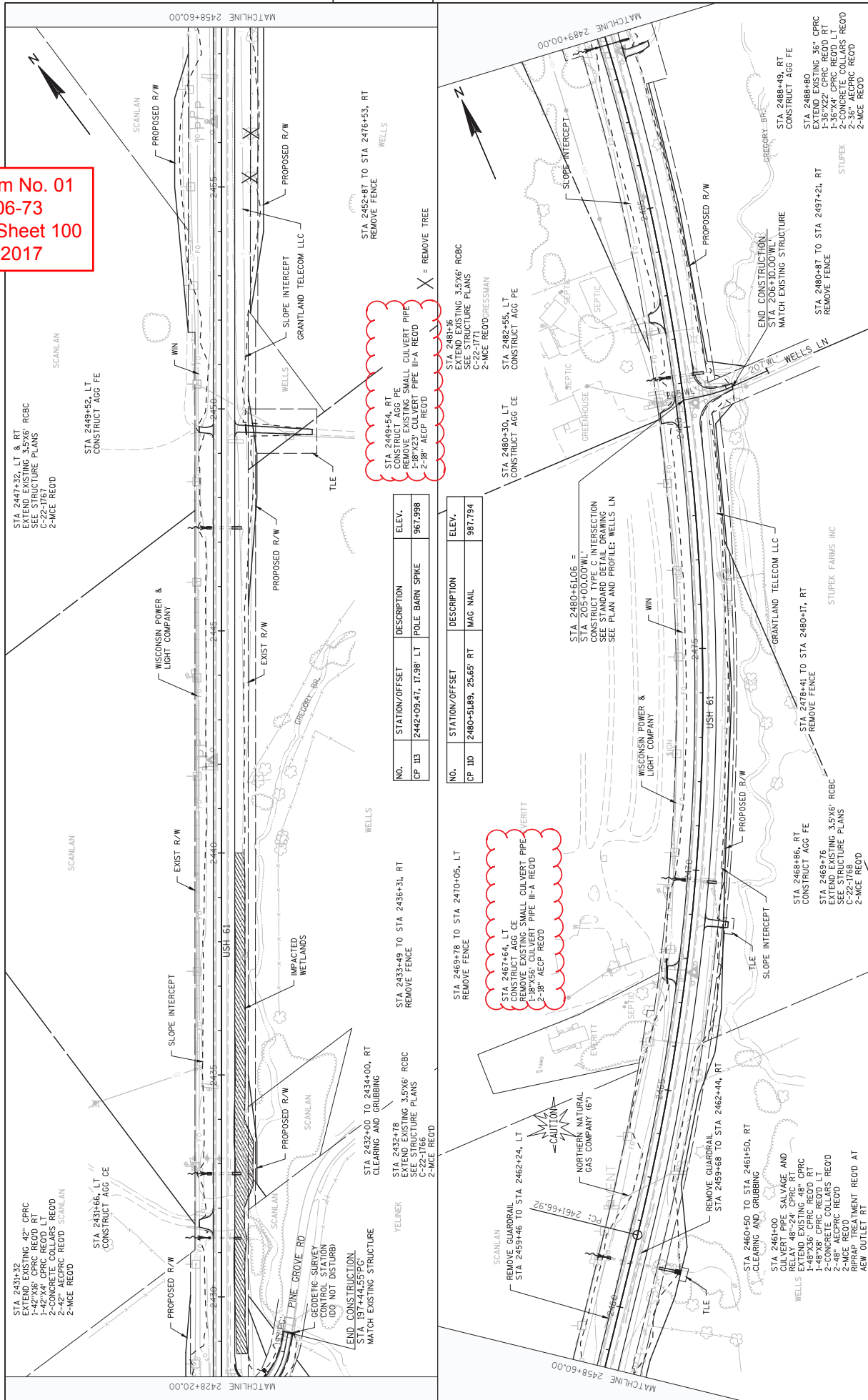
PLOT DATE : 9/3/2008 9:35 AM

PLOT BY : SAVANNAH STEIN

PLOT NAME : PLOT SCALE : 1 IN=200 FT

WISDOT/CADD SHEET 42

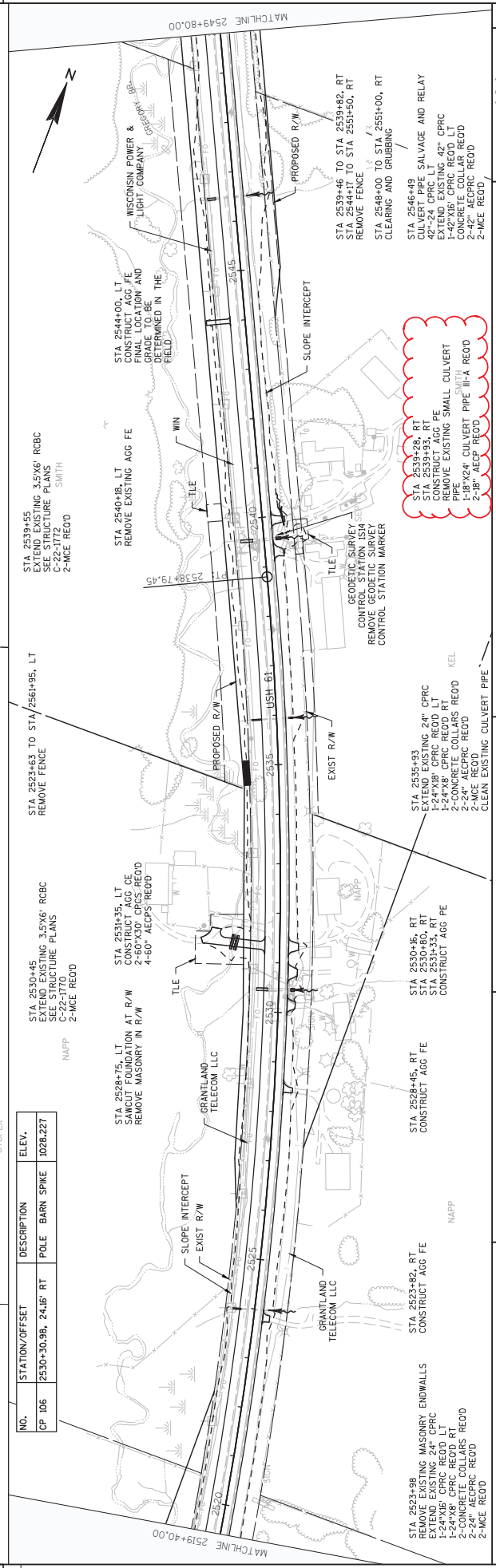
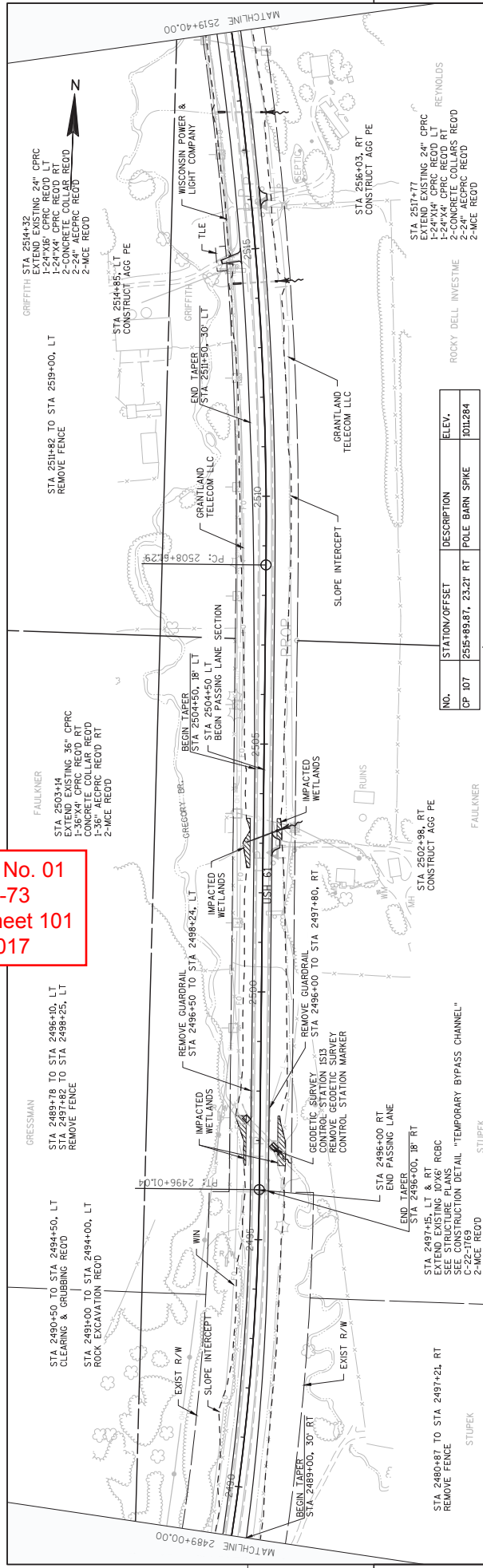
Addendum No. 01
 ID 1650-06-73
 Revised Sheet 100
 March 3, 2017



NO.	STATION/OFFSET	DESCRIPTION	ELEV.
CP 113	2442+09.47, 17.98' LT	POLE BARN SPIKE	967.998

NO.	STATION/OFFSET	DESCRIPTION	ELEV.
CP 110	2480+51.89, 25.65' RT	MAG NAIL	987.794

Addendum No. 01
 ID 1650-06-73
 Revised Sheet 101
 March 3, 2017



PROJECT NO: 1650-06-73

HWY: USH 61

COUNTY: GRANT

PLAN: USH 61

SHEET 101

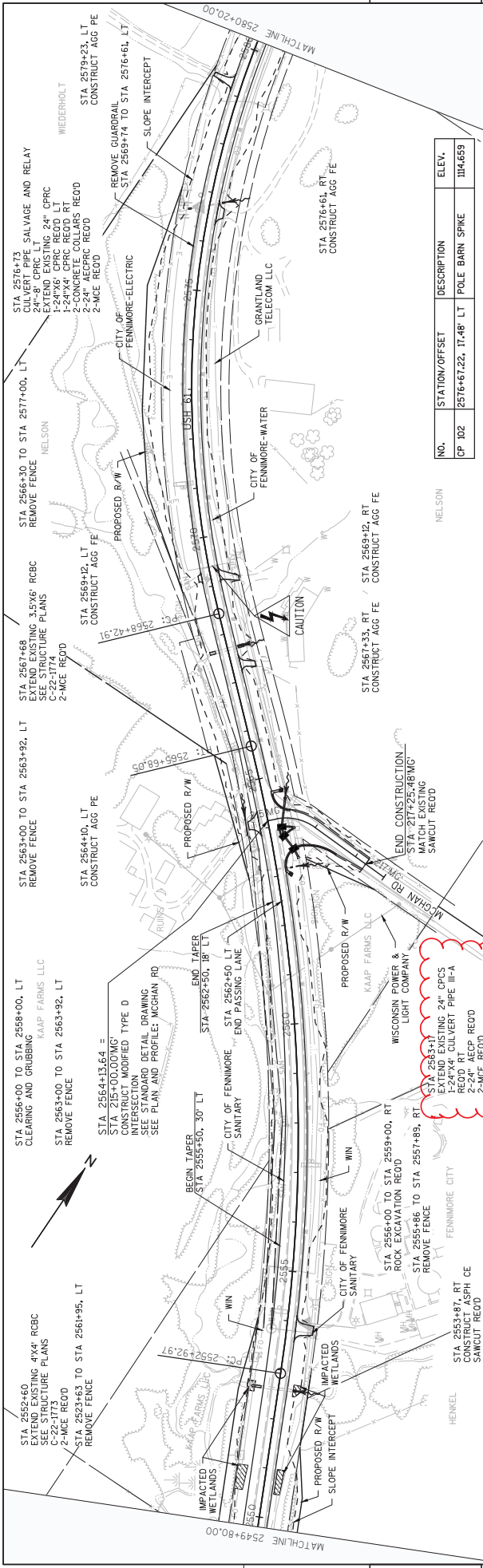
FILE NAME: P:\ENR\WITS\W11749\CIVIL_3D\16500603\9EETPLR\N0201.PN.DWG

PLOT DATE: 9/3/2008 9:35 AM

PLOT BY: SAVANNAH STEIN

PLOT NAME: PLOT SCALE: 1 IN=200 FT

WISDOT/CADD SHEET 42

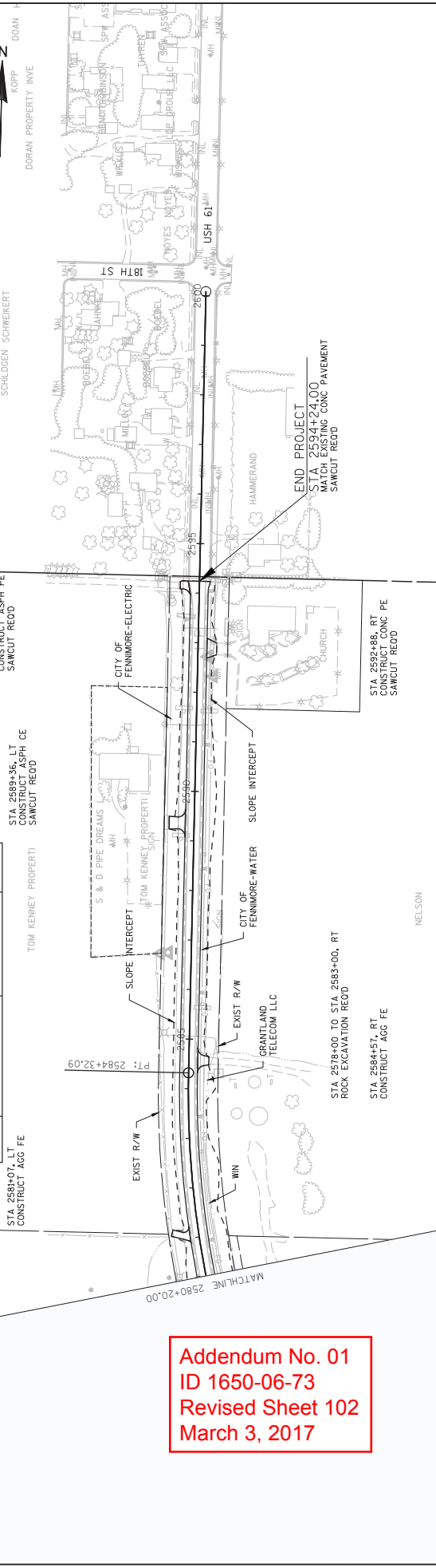


5

5

NO.	STATION/OFFSET	DESCRIPTION	ELEV.
CP 102	2576+67.22, 17'48" LT	POLE BARN SPIKE	114.659

NO.	STATION/OFFSET	DESCRIPTION	ELEV.
CP 101	2586+73.54, 46.58' LT	12" SPIKE	1163.114



Addendum No. 01
 ID 1650-06-73
 Revised Sheet 102
 March 3, 2017

PROJECT NO: 1650-06-73 HWY: USH 61 COUNTY: GRANT	PLAN: USH 61	SHEET 102 E
FILE NAME : P:\NLS\W\11749\CEVIL_3D\16500603\9EETPLANN0201.PN.DWG PLOT DATE : 9/2/2008 9:35 AM PLOT BY : SAVANNAH STEIN PLOT NAME : PLOT SCALE : 1 IN:200 FT		



Proposal Schedule of Items

Proposal ID: 20170314003 Project(s): 1650-06-73

Federal ID(s): WISC 2017093

SECTION: 0001 Contract Items

Alt Set ID: Alt Mbr ID:

Proposal Line Number	Item ID Description	Approximate Quantity and Units	Unit Price	Bid Amount
0010	201.0105 Clearing	49.000 STA	_____.	_____.
0020	201.0205 Grubbing	49.000 STA	_____.	_____.
0030	203.0100 Removing Small Pipe Culverts	46.000 EACH	_____.	_____.
0040	203.0200 Removing Old Structure (station) 01. 2081+65.57	LS	LUMP SUM	_____.
0050	203.0200 Removing Old Structure (station) 02. 2084+32.45	LS	LUMP SUM	_____.
0060	203.0200 Removing Old Structure (station) 03. 2231+14.61	LS	LUMP SUM	_____.
0070	203.0200 Removing Old Structure (station) 04. 2305+83.40	LS	LUMP SUM	_____.
0080	203.0200 Removing Old Structure (station) 05. 2332+95.43	LS	LUMP SUM	_____.
0090	203.0200 Removing Old Structure (station) 06. 2412+77.73	LS	LUMP SUM	_____.
0100	203.0200 Removing Old Structure (station) 07. 2432+77.58	LS	LUMP SUM	_____.
0110	203.0200 Removing Old Structure (station) 08. 2447+32.38	LS	LUMP SUM	_____.
0120	203.0200 Removing Old Structure (station) 09. 2469+76.22	LS	LUMP SUM	_____.
0130	203.0200 Removing Old Structure (station) 10. 2497+16.23	LS	LUMP SUM	_____.
0140	203.0200 Removing Old Structure (station) 11. 2530+46.06	LS	LUMP SUM	_____.



Proposal Schedule of Items

Proposal ID: 20170314003 Project(s): 1650-06-73

Federal ID(s): WISC 2017093

SECTION: 0001 Contract Items

Alt Set ID: Alt Mbr ID:

Proposal Line Number	Item ID Description	Approximate Quantity and Units	Unit Price	Bid Amount
0150	203.0200 Removing Old Structure (station) 12. 2481+16.32	LS	LUMP SUM	_____.
0160	203.0200 Removing Old Structure (station) 13. 2539+55.14	LS	LUMP SUM	_____.
0170	203.0200 Removing Old Structure (station) 14. 2552+61.29	LS	LUMP SUM	_____.
0180	203.0200 Removing Old Structure (station) 15. 2567+68.96	LS	LUMP SUM	_____.
0190	203.0200 Removing Old Structure (station) 16. 2531+78.54	LS	LUMP SUM	_____.
0200	204.0150 Removing Curb & Gutter	959.000 LF	_____.	_____.
0210	204.0165 Removing Guardrail	5,631.000 LF	_____.	_____.
0220	204.0170 Removing Fence	20,182.000 LF	_____.	_____.
0230	204.0185 Removing Masonry	21.000 CY	_____.	_____.
0240	204.0195 Removing Concrete Bases	1.000 EACH	_____.	_____.
0250	205.0100 Excavation Common	82,977.000 CY	_____.	_____.
0260	205.0200 Excavation Rock	13,705.000 CY	_____.	_____.
0270	206.2000 Excavation for Structures Culverts (structure) 01. C-22-1759	LS	LUMP SUM	_____.
0280	206.2000 Excavation for Structures Culverts (structure) 02. C-22-1760	LS	LUMP SUM	_____.
0290	206.2000 Excavation for Structures Culverts (structure) 03. C-22-1762	LS	LUMP SUM	_____.



Proposal Schedule of Items

Proposal ID: 20170314003 Project(s): 1650-06-73

Federal ID(s): WISC 2017093

SECTION: 0001 Contract Items

Alt Set ID: Alt Mbr ID:

Proposal Line Number	Item ID Description	Approximate Quantity and Units	Unit Price	Bid Amount
0300	206.2000 Excavation for Structures Culverts (structure) 04. C-22-1763	LS	LUMP SUM	_____.
0310	206.2000 Excavation for Structures Culverts (structure) 05. C-22-1764	LS	LUMP SUM	_____.
0320	206.2000 Excavation for Structures Culverts (structure) 06. C-22-1765	LS	LUMP SUM	_____.
0330	206.2000 Excavation for Structures Culverts (structure) 07. C-22-1766	LS	LUMP SUM	_____.
0340	206.2000 Excavation for Structures Culverts (structure) 08. C-22-1767	LS	LUMP SUM	_____.
0350	206.2000 Excavation for Structures Culverts (structure) 09. C-22-1768	LS	LUMP SUM	_____.
0360	206.2000 Excavation for Structures Culverts (structure) 10. C-22-1769	LS	LUMP SUM	_____.
0370	206.2000 Excavation for Structures Culverts (structure) 11. C-22-1770	LS	LUMP SUM	_____.
0380	206.2000 Excavation for Structures Culverts (structure) 12. C-22-1771	LS	LUMP SUM	_____.
0390	206.2000 Excavation for Structures Culverts (structure) 13. C-22-1772	LS	LUMP SUM	_____.
0400	206.2000 Excavation for Structures Culverts (structure) 14. C-22-1773	LS	LUMP SUM	_____.
0410	206.2000 Excavation for Structures Culverts (structure) 15. C-22-1774	LS	LUMP SUM	_____.
0420	208.0100 Borrow	103,777.000 CY	_____.	_____.



Proposal Schedule of Items

Proposal ID: 20170314003 Project(s): 1650-06-73

Federal ID(s): WISC 2017093

SECTION: 0001 Contract Items

Alt Set ID: Alt Mbr ID:

Proposal Line Number	Item ID Description	Approximate Quantity and Units	Unit Price	Bid Amount
0430	210.2500 Backfill Structure Type B	6,668.000 TON	_____.	_____.
0440	213.0100 Finishing Roadway (project) 01. 1650-06-73	1.000 EACH	_____.	_____.
0450	305.0110 Base Aggregate Dense 3/4-Inch	8,762.000 TON	_____.	_____.
0460	305.0120 Base Aggregate Dense 1 1/4-Inch	65,185.000 TON	_____.	_____.
0470	311.0115 Breaker Run	347.000 CY	_____.	_____.
0480	312.0110 Select Crushed Material	35,959.000 TON	_____.	_____.
0490	325.0100 Pulverize and Relay	216,316.000 SY	_____.	_____.
0500	371.1000.S QMP Base Aggregate Dense 1 1/4-Inch Compaction	65,185.000 TON	_____.	_____.
0510	374.1020.S QMP Pulverize and Relay Compaction	216,316.000 SY	_____.	_____.
0520	416.0160 Concrete Driveway 6-Inch	70.000 SY	_____.	_____.
0530	416.1010 Concrete Surface Drains	22.000 CY	_____.	_____.
0540	440.4410 Incentive IRI Ride	19,156.000 DOL	1.00000	19,156.00
0550	455.0605 Tack Coat	12,831.000 GAL	_____.	_____.
0560	460.2000 Incentive Density HMA Pavement	47,370.000 DOL	1.00000	47,370.00
0570	460.2010 Incentive Air Voids HMA Pavement	47,370.000 DOL	1.00000	47,370.00
0580	460.4110.S Reheating HMA Pavement Longitudinal Joints	29,479.000 LF	_____.	_____.



Proposal Schedule of Items

Proposal ID: 20170314003 Project(s): 1650-06-73

Federal ID(s): WISC 2017093

SECTION: 0001 Contract Items

Alt Set ID: Alt Mbr ID:

Proposal Line Number	Item ID Description	Approximate Quantity and Units	Unit Price	Bid Amount
0590	460.6223 HMA Pavement 3 MT 58-28 S	41,383.000 TON	_____.	_____.
0600	460.6224 HMA Pavement 4 MT 58-28 S	29,316.000 TON	_____.	_____.
0610	465.0120 Asphaltic Surface Driveways and Field Entrances	248.000 TON	_____.	_____.
0620	465.0425 Asphaltic Shoulder Rumble Strips 2-Lane Rural	85,414.000 LF	_____.	_____.
0630	465.0475 Asphalt Center Line Rumble Strips 2-Lane Rural	33,031.000 LF	_____.	_____.
0640	502.4205 Adhesive Anchors No. 5 Bar	524.000 EACH	_____.	_____.
0650	504.0100 Concrete Masonry Culverts	439.000 CY	_____.	_____.
0660	505.0400 Bar Steel Reinforcement HS Structures	36,750.000 LB	_____.	_____.
0670	505.0600 Bar Steel Reinforcement HS Coated Structures	16,330.000 LB	_____.	_____.
0680	516.0500 Rubberized Membrane Waterproofing	298.000 SY	_____.	_____.
0690	520.8000 Concrete Collars for Pipe	58.000 EACH	_____.	_____.
0700	520.9700.S Culvert Pipe Liners (size) 01. 24-Inch	166.000 LF	_____.	_____.
0710	520.9700.S Culvert Pipe Liners (size) 02. 36-Inch	376.000 LF	_____.	_____.
0720	520.9700.S Culvert Pipe Liners (size) 03. 60-Inch	123.000 LF	_____.	_____.
0730	520.9750.S Cleaning Culvert Pipes for Liner Verification	3.000 EACH	_____.	_____.



Proposal Schedule of Items

Proposal ID: 20170314003 Project(s): 1650-06-73

Federal ID(s): WISC 2017093

SECTION: 0001 Contract Items

Alt Set ID: Alt Mbr ID:

Proposal Line Number	Item ID Description	Approximate Quantity and Units	Unit Price	Bid Amount
0760	521.0130 Culvert Pipe Corrugated Steel 30-Inch	4.000 LF	_____.	_____.
0770	521.0136 Culvert Pipe Corrugated Steel 36-Inch	70.000 LF	_____.	_____.
0780	521.0160 Culvert Pipe Corrugated Steel 60-Inch	66.000 LF	_____.	_____.
0810	521.1030 Apron Endwalls for Culvert Pipe Steel 30-Inch	2.000 EACH	_____.	_____.
0820	521.1036 Apron Endwalls for Culvert Pipe Steel 36-Inch	2.000 EACH	_____.	_____.
0830	521.1060 Apron Endwalls for Culvert Pipe Steel 60-Inch	6.000 EACH	_____.	_____.
0840	522.0124 Culvert Pipe Reinforced Concrete Class III 24-Inch	374.000 LF	_____.	_____.
0850	522.0130 Culvert Pipe Reinforced Concrete Class III 30-Inch	38.000 LF	_____.	_____.
0860	522.0136 Culvert Pipe Reinforced Concrete Class III 36-Inch	86.000 LF	_____.	_____.
0870	522.0142 Culvert Pipe Reinforced Concrete Class III 42-Inch	48.000 LF	_____.	_____.
0880	522.0148 Culvert Pipe Reinforced Concrete Class III 48-Inch	56.000 LF	_____.	_____.
0890	522.1018 Apron Endwalls for Culvert Pipe Reinforced Concrete 18-Inch	1.000 EACH	_____.	_____.
0900	522.1024 Apron Endwalls for Culvert Pipe Reinforced Concrete 24-Inch	34.000 EACH	_____.	_____.
0910	522.1030 Apron Endwalls for Culvert Pipe Reinforced Concrete 30-Inch	8.000 EACH	_____.	_____.



Proposal Schedule of Items

Proposal ID: 20170314003 Project(s): 1650-06-73

Federal ID(s): WISC 2017093

SECTION: 0001 Contract Items

Alt Set ID: Alt Mbr ID:

Proposal Line Number	Item ID Description	Approximate Quantity and Units	Unit Price	Bid Amount
0920	522.1036 Apron Endwalls for Culvert Pipe Reinforced Concrete 36-Inch	9.000 EACH	_____.	_____.
0930	522.1042 Apron Endwalls for Culvert Pipe Reinforced Concrete 42-Inch	6.000 EACH	_____.	_____.
0940	522.1048 Apron Endwalls for Culvert Pipe Reinforced Concrete 48-Inch	4.000 EACH	_____.	_____.
0950	524.0124 Culvert Pipe Salvaged 24-Inch	120.000 LF	_____.	_____.
0960	524.0130 Culvert Pipe Salvaged 30-Inch	48.000 LF	_____.	_____.
0970	524.0136 Culvert Pipe Salvaged 36-Inch	24.000 LF	_____.	_____.
0980	524.0142 Culvert Pipe Salvaged 42-Inch	24.000 LF	_____.	_____.
0990	524.0148 Culvert Pipe Salvaged 48-Inch	24.000 LF	_____.	_____.
1000	524.0624 Apron Endwalls for Culvert Pipe Salvaged 24-Inch	1.000 EACH	_____.	_____.
1010	601.0411 Concrete Curb & Gutter 30-Inch Type D	57.000 LF	_____.	_____.
1020	601.0415 Concrete Curb & Gutter 6-Inch Sloped 30-Inch Type J	62.000 LF	_____.	_____.
1030	601.0553 Concrete Curb & Gutter 4-Inch Sloped 36-Inch Type D	565.000 LF	_____.	_____.
1040	601.0557 Concrete Curb & Gutter 6-Inch Sloped 36-Inch Type D	2,404.000 LF	_____.	_____.
1050	606.0200 Riprap Medium	150.000 CY	_____.	_____.
1060	606.0300 Riprap Heavy	87.000 CY	_____.	_____.



Proposal Schedule of Items

Proposal ID: 20170314003 Project(s): 1650-06-73

Federal ID(s): WISC 2017093

SECTION: 0001 Contract Items

Alt Set ID: Alt Mbr ID:

Proposal Line Number	Item ID Description	Approximate Quantity and Units	Unit Price	Bid Amount
1070	608.0418 Storm Sewer Pipe Reinforced Concrete Class IV 18-Inch	136.000 LF	_____.	_____.
1080	608.0424 Storm Sewer Pipe Reinforced Concrete Class IV 24-Inch	126.000 LF	_____.	_____.
1090	611.0615 Inlet Covers Type F	1.000 EACH	_____.	_____.
1100	611.0630 Inlet Covers Type HM-GJ	2.000 EACH	_____.	_____.
1110	611.0642 Inlet Covers Type MS	3.000 EACH	_____.	_____.
1120	611.3004 Inlets 4-FT Diameter	3.000 EACH	_____.	_____.
1130	611.3903 Inlets Median 3 Grate	1.000 EACH	_____.	_____.
1140	611.8110 Adjusting Manhole Covers	2.000 EACH	_____.	_____.
1150	614.2300 MGS Guardrail 3	67.000 LF	_____.	_____.
1160	614.2500 MGS Thrie Beam Transition	160.000 LF	_____.	_____.
1170	614.2610 MGS Guardrail Terminal EAT	4.000 EACH	_____.	_____.
1180	616.0700.S Fence Safety	118.000 LF	_____.	_____.
1190	618.0100 Maintenance And Repair of Haul Roads (project) 01. 1650-06-73	1.000 EACH	_____.	_____.
1200	619.1000 Mobilization	1.000 EACH	_____.	_____.
1210	620.0300 Concrete Median Sloped Nose	64.000 SF	_____.	_____.
1220	624.0100 Water	2,160.000 MGAL	_____.	_____.



Proposal Schedule of Items

Proposal ID: 20170314003 Project(s): 1650-06-73

Federal ID(s): WISC 2017093

SECTION: 0001 Contract Items

Alt Set ID: Alt Mbr ID:

Proposal Line Number	Item ID Description	Approximate Quantity and Units	Unit Price	Bid Amount
1230	625.0500 Salvaged Topsoil	295,226.000 SY	_____.	_____.
1240	627.0200 Mulching	273,616.000 SY	_____.	_____.
1250	628.1504 Silt Fence	51,300.000 LF	_____.	_____.
1260	628.1520 Silt Fence Maintenance	51,300.000 LF	_____.	_____.
1270	628.1905 Mobilizations Erosion Control	8.000 EACH	_____.	_____.
1280	628.1910 Mobilizations Emergency Erosion Control	4.000 EACH	_____.	_____.
1290	628.2002 Erosion Mat Class I Type A	63,000.000 SY	_____.	_____.
1300	628.2004 Erosion Mat Class I Type B	3,800.000 SY	_____.	_____.
1310	628.7005 Inlet Protection Type A	5.000 EACH	_____.	_____.
1320	628.7020 Inlet Protection Type D	5.000 EACH	_____.	_____.
1330	628.7504 Temporary Ditch Checks	1,600.000 LF	_____.	_____.
1340	628.7555 Culvert Pipe Checks	490.000 EACH	_____.	_____.
1350	628.7560 Tracking Pads	10.000 EACH	_____.	_____.
1360	629.0205 Fertilizer Type A	273.000 CWT	_____.	_____.
1370	630.0110 Seeding Mixture No. 10	3,116.000 LB	_____.	_____.
1380	630.0130 Seeding Mixture No. 30	3,644.000 LB	_____.	_____.
1390	630.0200 Seeding Temporary	11,698.000 LB	_____.	_____.



Proposal Schedule of Items

Proposal ID: 20170314003 Project(s): 1650-06-73

Federal ID(s): WISC 2017093

SECTION: 0001 Contract Items

Alt Set ID: Alt Mbr ID:

Proposal Line Number	Item ID Description	Approximate Quantity and Units	Unit Price	Bid Amount
1400	633.5200 Markers Culvert End	80.000 EACH	_____.	_____.
1410	634.0614 Posts Wood 4x6-Inch X 14-FT	81.000 EACH	_____.	_____.
1420	634.0616 Posts Wood 4x6-Inch X 16-FT	69.000 EACH	_____.	_____.
1430	634.0618 Posts Wood 4x6-Inch X 18-FT	22.000 EACH	_____.	_____.
1440	634.0808 Posts Tubular Steel 2x2-Inch X 8-FT	1.000 EACH	_____.	_____.
1450	637.2210 Signs Type II Reflective H	818.110 SF	_____.	_____.
1460	637.2230 Signs Type II Reflective F	321.500 SF	_____.	_____.
1470	638.2102 Moving Signs Type II	1.000 EACH	_____.	_____.
1480	638.2602 Removing Signs Type II	149.000 EACH	_____.	_____.
1490	638.3000 Removing Small Sign Supports	145.000 EACH	_____.	_____.
1500	642.5001 Field Office Type B	1.000 EACH	_____.	_____.
1510	643.0100 Traffic Control (project) 01. 1650-06-73	1.000 EACH	_____.	_____.
1520	643.0300 Traffic Control Drums	39,689.000 DAY	_____.	_____.
1530	643.0420 Traffic Control Barricades Type III	5,610.000 DAY	_____.	_____.
1540	643.0705 Traffic Control Warning Lights Type A	640.000 DAY	_____.	_____.
1550	643.0715 Traffic Control Warning Lights Type C	170.000 DAY	_____.	_____.
1560	643.0900 Traffic Control Signs	4,300.000 DAY	_____.	_____.



Proposal Schedule of Items

Proposal ID: 20170314003 Project(s): 1650-06-73

Federal ID(s): WISC 2017093

SECTION: 0001 Contract Items

Alt Set ID: Alt Mbr ID:

Proposal Line Number	Item ID Description	Approximate Quantity and Units	Unit Price	Bid Amount
1570	643.1050 Traffic Control Signs PCMS	14.000 DAY	_____.	_____.
1580	645.0105 Geotextile Type C	1,230.000 SY	_____.	_____.
1590	645.0120 Geotextile Type HR	203.000 SY	_____.	_____.
1600	645.0130 Geotextile Type R	590.000 SY	_____.	_____.
1610	646.0106 Pavement Marking Epoxy 4-Inch	111,046.000 LF	_____.	_____.
1620	646.0126 Pavement Marking Epoxy 8-Inch	3,363.000 LF	_____.	_____.
1630	646.0406 Pavement Marking Same Day Epoxy 4-Inch	62,339.000 LF	_____.	_____.
1640	647.0566 Pavement Marking Stop Line Epoxy 18-Inch	218.000 LF	_____.	_____.
1650	648.0100 Locating No-Passing Zones	9.578 MI	_____.	_____.
1660	649.0403 Temporary Pavement Marking Epoxy 4-Inch	62,339.000 LF	_____.	_____.
1670	650.4000 Construction Staking Storm Sewer	7.000 EACH	_____.	_____.
1680	650.4500 Construction Staking Subgrade	53,049.000 LF	_____.	_____.
1690	650.5000 Construction Staking Base	53,049.000 LF	_____.	_____.
1700	650.5500 Construction Staking Curb Gutter and Curb & Gutter	3,095.000 LF	_____.	_____.
1710	650.6000 Construction Staking Pipe Culverts	77.000 EACH	_____.	_____.



Proposal Schedule of Items

Proposal ID: 20170314003 Project(s): 1650-06-73

Federal ID(s): WISC 2017093

SECTION: 0001 Contract Items

Alt Set ID: Alt Mbr ID:

Proposal Line Number	Item ID Description	Approximate Quantity and Units	Unit Price	Bid Amount
1720	650.6500 Construction Staking Structure Layout (structure) 01. C-22-1759	LS	LUMP SUM	_____.
1730	650.6500 Construction Staking Structure Layout (structure) 02. C-22-1760	LS	LUMP SUM	_____.
1740	650.6500 Construction Staking Structure Layout (structure) 03. C-22-1762	LS	LUMP SUM	_____.
1750	650.6500 Construction Staking Structure Layout (structure) 04. C-22-1763	LS	LUMP SUM	_____.
1760	650.6500 Construction Staking Structure Layout (structure) 05. C-22-1764	LS	LUMP SUM	_____.
1770	650.6500 Construction Staking Structure Layout (structure) 06. C-22-1765	LS	LUMP SUM	_____.
1780	650.6500 Construction Staking Structure Layout (structure) 07. C-22-1766	LS	LUMP SUM	_____.
1790	650.6500 Construction Staking Structure Layout (structure) 08. C-22-1767	LS	LUMP SUM	_____.
1800	650.6500 Construction Staking Structure Layout (structure) 09. C-22-1768	LS	LUMP SUM	_____.
1810	650.6500 Construction Staking Structure Layout (structure) 10. C-22-1769	LS	LUMP SUM	_____.
1820	650.6500 Construction Staking Structure Layout (structure) 11. C-22-1770	LS	LUMP SUM	_____.
1830	650.6500 Construction Staking Structure Layout (structure) 12. C-22-1771	LS	LUMP SUM	_____.
1840	650.6500 Construction Staking Structure Layout (structure) 13. C-22-1772	LS	LUMP SUM	_____.



Proposal Schedule of Items

Proposal ID: 20170314003 Project(s): 1650-06-73

Federal ID(s): WISC 2017093

SECTION: 0001 Contract Items

Alt Set ID: Alt Mbr ID:

Proposal Line Number	Item ID Description	Approximate Quantity and Units	Unit Price	Bid Amount
1850	650.6500 Construction Staking Structure Layout (structure) 14. C-22-1773	LS	LUMP SUM	_____.
1860	650.6500 Construction Staking Structure Layout (structure) 15. C-22-1774	LS	LUMP SUM	_____.
1870	650.8000 Construction Staking Resurfacing Reference	51,797.000 LF	_____.	_____.
1880	650.9910 Construction Staking Supplemental Control (project) 01. 1650-06-73	LS	LUMP SUM	_____.
1890	650.9920 Construction Staking Slope Stakes	53,049.000 LF	_____.	_____.
1900	690.0150 Sawing Asphalt	28,347.000 LF	_____.	_____.
1910	690.0250 Sawing Concrete	65.000 LF	_____.	_____.
1920	715.0502 Incentive Strength Concrete Structures	2,634.000 DOL	1.00000	2,634.00
1930	ASP.1T0A On-the-Job Training Apprentice at \$5.00/HR	2,500.000 HRS	5.00000	12,500.00
1940	ASP.1T0G On-the-Job Training Graduate at \$5.00/HR	3,520.000 HRS	5.00000	17,600.00
1950	SPV.0035 Special 01. Excess Pulverized Material	346.000 CY	_____.	_____.
1960	SPV.0060 Special 01. Hot Mix Asphalt Percent Within Limit (PWL) Test Strip	1.000 EACH	_____.	_____.
1970	520.1018 Apron Endwalls for Culvert Pipe 18-Inch	76.000 EACH	_____.	_____.
1980	520.1024 Apron Endwalls for Culvert Pipe 24-Inch	10.000 EACH	_____.	_____.
1990	520.3318 Culvert Pipe Class III-A 18-Inch	1,898.000 LF	_____.	_____.



Proposal Schedule of Items

Proposal ID: 20170314003 Project(s): 1650-06-73

Federal ID(s): WISC 2017093

SECTION: 0001 Contract Items

Alt Set ID: Alt Mbr ID:

Proposal Line Number	Item ID Description	Approximate Quantity and Units	Unit Price	Bid Amount
2000	520.3324 Culvert Pipe Class III-A 24-Inch	334.000 LF	_____.	_____.
Section: 0001			Total:	_____.
			Total Bid:	_____.

